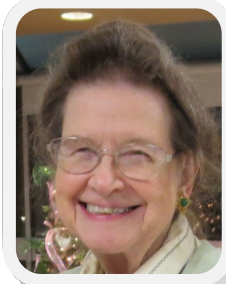


FWDP Newsletter



Volume 30 Issue 7 October 2015

**Fort Worth Decorative Painters is a Chapter
of the Society of Decorative Painters
Celebrating 30 Years**



Y's Lines: Yvonne Lowrie, President 2015 yvonnelowrie@juno.com 817-923-2901

Y'S WORDS:

The final three months of this Chapter Year are to be filled with all kinds of fun adventures.

The Halloween witch, black cat and carved pumpkin garden stone will be a fun and useful decorating item for our house or garden. I plan to use mine at the front door.

Then on November 7 We Paint Together Saturday with Beth who is teaching a watercolor poinsettia. Then end the day (4 pm) with a REUNION of present and former Chapter members to Celebrate 35 Years of Decorative Painting in Fort Worth! *See address of church on Page 6.

The Saturday Paint Together is open to any one who wants to paint with us. Encourage former members to join in - same price as members - we can REUNION all day!! Remember everyone needs to register and pay for the SATURDAY PAINT TOGETHER by the October meeting. Then our thoughts can turn to Christmas with LaRue teaching lacework on an ornament at the November meeting and in December the angel themed Christmas Party. Be sure to sign up and pay for the party dinner.

Invitations for the REUNION will go out mid October. Annette Parks a Founding member and first President of the Chapter has painted a watercolor to celebrate the event. It will be used for the invitation and raffled at the event. If you are still in contact with a former member, please send me a postal and e-mail address so they can be invited.

Yvonne Lowrie 817-923-2901
yvonnelowrie@juno.com

Meeting is October 19, 2015

6:00 Social 6:30 Meeting

FWDP supports the Society of Decorative Painters. Dues are \$50/year. You must be a member of SDP to belong to FWP.
Visit the website at: www.decorativepainters.org

Sunshine—Larue Hughes

We want to wish all of the ladies who have birthdays in October and November a very Happy Birthday!

October

5th. Linda Crawford

18th Gayla Heath

31st Jan McCleery

November

12th Nancy Genetti

Ladies, I want to thank you so much for the lovely plant, your visits, phone calls, and cards and most of all your prayers during this time of the loss of my son, David. This has been a great loss to our family but God has promised never to leave or forsake us and this is a great comfort.

You are such a wonderful group of ladies and I love a appreciate each one of you so much. May God bless you

Love, LaRue, Vickie and Janis

Hospitality—Pam Martinez

I will provide a few of my favorite Mexican food items - Taco Meat, Fried Rice and Rotel Cheese Dip and plenty of Chips. These items can be mixed in a variety of ways according to your taste. Armida, Mary Helen and Judy Wallis will provide sweet items for your enjoyment. You will have an opportunity to sign-up for November when next we meet.

Thanks. Pam Martinez

Treasurer's Report—Sharlene King

Checking \$ 5,313.57

Savings 5,208.56

Total \$10,522.13

Membership—Mary Helen Horne

National and Chapter dues are due. I will be taking chapter dues at the October meeting. Chapter dues are \$20, still the best bargain around!

There is a form in the latest Decorative Painter magazine or you can pay SDP dues on line.

Thanks,
Mary Helen

Monthly Raffles—Sharlene King

Yvonne Lowrie, Connie Alexander, Gayla Heath & Peggy Gilliland are donors for our October raffle.

Thanks to Connie Alexander, Yvonne, Juanita, Carolyn & Judy Wallis for their generous donations at the September raffle. We had some great items to choose from!

THANK YOU ALL!!

Sharlene



Memory Boxes

Please bring finished boxes to next meeting and pick up more boxes.

Thanks a lot,
July Wallis

Items for Newsletter

If you bring a homemade food item to the meeting, please share it.....bring me a copy or send by email so I can put it in the newsletter.

October Program by Dusti

OCTOBER PROJECT – Beth Stodieck – VP Programs
To be taught by Dusti Dancer

Our October project is an adorable Halloween piece painted on a scalloped landscaping stone. It has a cross-eyed witch, a goofy black cat and the happiest Jack-o'-lantern you've ever seen. The best part is that it can easily be turned around later to show a different holiday painting on the back. Please be warned ahead of time – **there is prep work on this piece and you cannot wait until the last moment to prep it.** These stones soak up paint like a sponge so it takes awhile to get good coverage. Prep instructions are below.

Beth has the stones and brought them to the September meeting. If you were not there or forgot to buy your stone you can contact Beth directly to come by her house and pick one up. (Text – 817-999-4349 Hulen Mall area) The stones are \$1.50 each before prep. If you can't make it by Beth's house but still want to join in the fun, contact Beth **ASAP** and she will prep the stone for you. Prepped stones will be \$7.50 each and once you have agreed to buy a prepped stone you will be expected to pay Beth for it even if something happens and you don't make it to the meeting since she will have already put in the time to prep your piece.

Prep supplies are up to you. If you have Gesso and don't mind the expense, basecoat the whole thing with one or two generous coats of gesso, filling in the holes as needed to get good coverage. The easy and inexpensive way is to spray the stone with either a primer spray or a flat finish spray paint, grey or white would work well. Cheap brands are fine. You just want good coverage to make painting easier in class. It takes several coats to get good coverage. Priming the stone well makes painting it **MUCH** easier so don't skimp on the primer.

Before class transfer the main pattern only to the stone with good graphite and basecoat the following elements:

Background: Medium yellow (cadmium, moon or primary yellows would be good.)

Hat and Cat: Black (the ear/leaf shaped piece on the right side of the witch is part of the hat brim) (small triangle pieces around her face are green hair. Use the green of your choice)

Pumpkin: medium/light value orange with medium green stem

Witch's face: medium grey green

Stripes on pumpkin are done with a stencil and a darker, reddish orange. We will share our stencils at class if you don't have one.

These basecoats may take more than one coat to get good coverage.

Transfer the pattern details after base coating and drying.

SUPPLIES FOR CLASS: Regular acrylic painting supplies plus:

White	Black	light yellow green	dark green	light orange
Darker reddish orange		background yellow	blush red	
light blue or color of your choice for witch eyes			purple for squiggles	



2016 Programs

ONE MORE MONTH to come up with projects you'd like to paint in 2016! By the end of this year we will have done 9 programs and 3 Saturday Specials with only 5 teachers. It's time for new ideas, new teachers, new surfaces and only you can make it happen! Did you go to a seminar somewhere else this year where you learned something new? Is there a favorite project in a magazine that haunts you? PAINT IT AND BRING IT! Did you find a new idea for a project at the Laurie Speltz seminar? Were you struck with a brilliant project idea to use stencils on a project. Who knows where your inspiration will come from?

Do you have a project that you'd like to see us do but you ABSOLUTELY WILL NOT teach it? Bring it anyway and we'll see if we can find someone who can teach it.

It's time to plan – paint – try new techniques – experiment and then bring all you've learned to the November meeting so we can have all that brilliance and creativity to choose from for 2016 programs. This has to be a team effort so put your big girl panties on and join in! You can do it!

Christmas Party—Connie Alexander

Christmas Party

Sharlene King is accepting reservations for the Christmas Party to be held on December 14th, a week earlier than our usual meeting night. The cost is \$10 and must be received by the end of the November regular meeting. We will be having a traditional turkey dinner with a variety of pies for dessert.



The theme is "Angels" and you are asked to paint your Christmas exchange ornament either on an angel shape, or including an angel in your design if it is on a different shaped surface. If you are participating in the "Gifts of 5" exchange, be sure your small handmade gifts are placed in 5 separate brown paper lunch bags and are given to Beth Stodieck at the door. Later you will receive a bag with 5 different gifts. It is just like Christmas morning when everyone rushes to open their treasures.

Don't forget to paint something for the Silent Auction. This is our only fund raiser of the year. Bring large and small, this enables everyone to bid on items.

The Botanic Gardens has promised to pipe in music for us, but if anyone has a portable CD player they would like to bring, I have some incredible angel-voiced CDs that would set the mood. If you have an outfit with an angel design on it, please wear it that evening. There will also be a small surprise, so join us full of joyful spirit.

September Meeting

Make It Take It
Project with Beth
teaching



Cement Pavers for next month's project. How heavy are these!





SATURDAY SPECIAL
November 7th, 2015
9a.m. (promptly, please) – 4p.m. ish

CONTROL FREAKS! BEWARE! Time to let go of the control and let the water do its thing! This next Saturday Special will be a beautiful Poinsettia Watercolor with Beth Stodieck. Fee for the class is \$20, including lunch.

If you would like a palette and watercolor paper, with pattern put on by Beth before class, there will be an additional \$10 fee for a 9 X 12" sheet and palette. If you would like to do the piece on a larger surface, 11 X 15" paper will be available for \$12 for the kit but please understand the smaller size is easier and quicker to paint. You will go home with enough paint to finish anything you don't complete in class. If you have a good selection of watercolors and paper of your own, there will be no palette fee. Just contact Beth for an advance copy of the pattern and paint list.

Also, last session we had a few people who brought their own project to work on, not the one being taught. Pretty smart! For \$20 you get a nice lunch, a large open area to spread out your supplies and one full day designated to nothing but painting with friends. And you get all the instructions for the class project along with all of the teacher's tips and hints for doing the class piece. All we ask is that you let the people who are painting the class piece sit closest to the teacher.

Details about location, directions and deadlines are listed below. **BUT PLEASE, PLEASE, PLEASE LET BETH KNOW ASAP IF YOU WILL BE BUYING A PALATTE AND PAPER SO SHE CAN GET PATTERNS AND PALETTES DONE BEFORE THE LAST MINUTE.**

Grace United Methodist Church of Ft. Worth

Clover Lane, just west of downtown,
 exit Montgomery St.

1 LONG block on westbound service road.

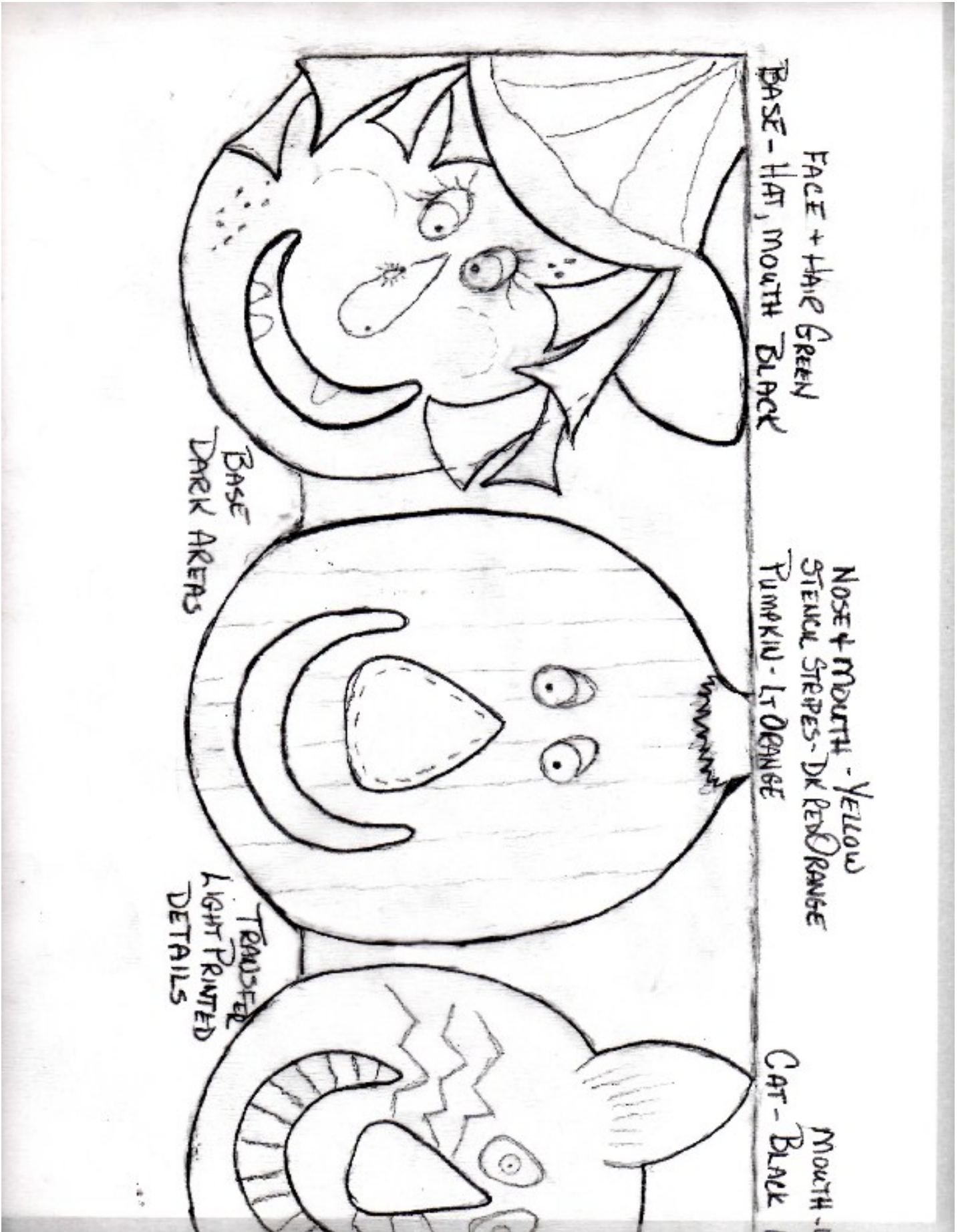
Turn right at the stop sign. 1 block N of I-30

\$20, including lunch, **PAYABLE IN ADVANCE ONLY,**

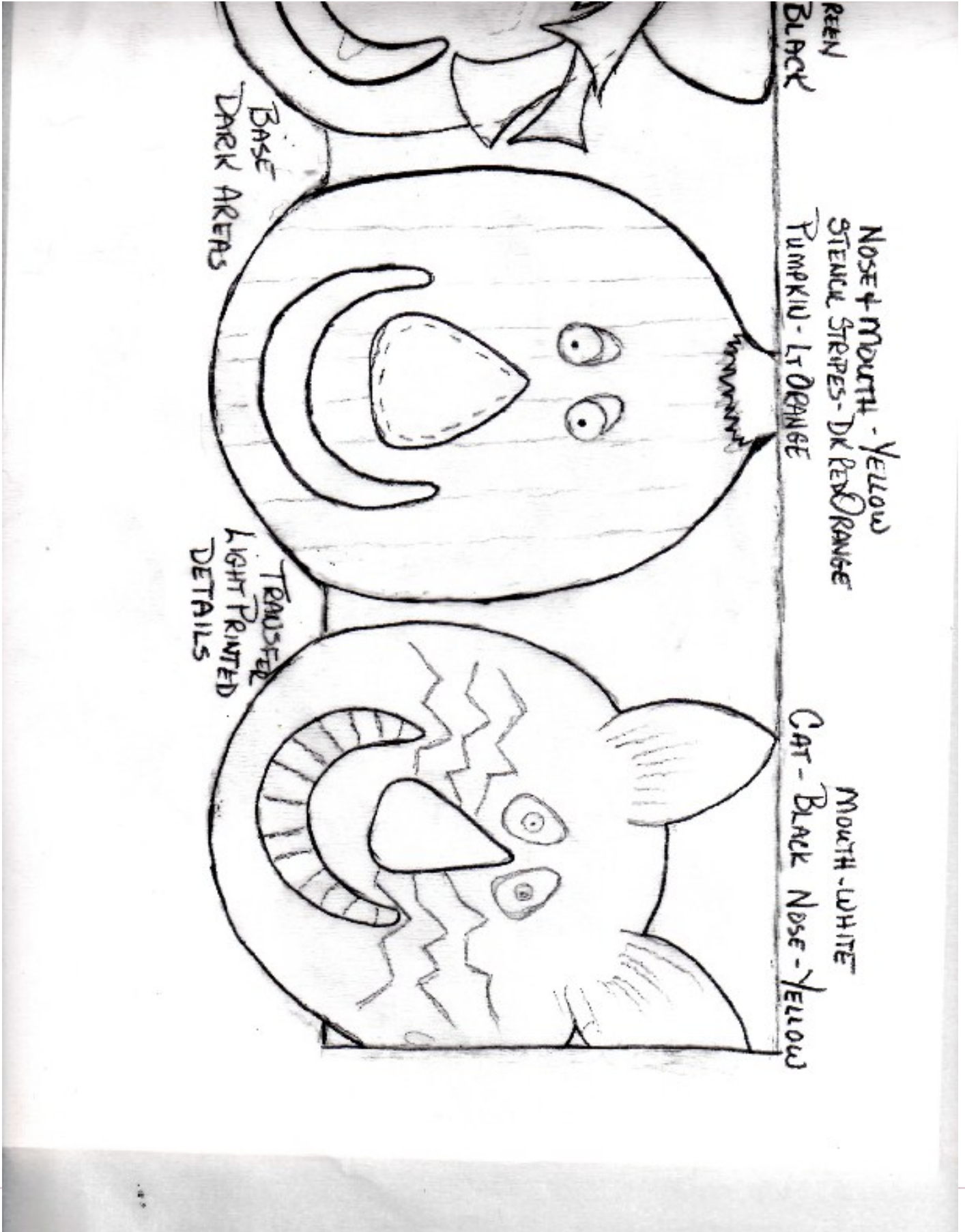
to Dusti Dancer no later than November 4th, 2015.



Halloween Buddies 1 for October Project



Halloween Buddies #2 for October Project



Minutes—September 21, 2015

The meeting was called to order 6:50 p.m. by President Yvonne Lowrie.

Beth Stodieck, VP-Programs/President Elect displayed the October project which will be a Halloween theme painted on a paving brick. She sold the bricks for \$1.50 and stated those still needing one need to contact her ASAP as there is a lot of prep work. She is considering a Christmas design for the reverse side of the brick.

Membership VP Mary Helen Horne stated chapter and SDP dues need to be paid and she is accepting the \$20 FWDP dues now.

Sharlene King began taking Christmas Party reservations at \$10 per person. The deadline to get your money in is the November meeting.

Connie Alexander, Christmas Party Chairman, reminded members to be working on their Gifts of 5 and hand-

painted Christmas ornaments. The Botanic Gardens has agreed to pipe in Carols for the party and there will be an angelic surprise.

Sharlene King noted that the monthly raffle brought in \$73 this evening.

Dusti Dancer reminded everyone we would be having another Lets Paint Together Saturday at Grace Methodist Church on November 7th. Beth displayed a watercolor poinsettia design that we will paint that day. Costs are projected at \$20 for the day and an additional amount for supplies. Details are forthcoming. Yvonne reminded people that a FWDP 30th Anniversary observance will occur after the project on November 7th and asked everyone to submit the names and contact information of former members to be invited to the Celebration.

The Sunshine report included news of member Netia Stevens' death and the passing of La Rue Hughes' son.

La Rue still plans to teach the Christmas ornament at the November meeting.

Judy Wallis has Memory Boxes available to paint and will bring them to the meeting if contacted ahead of time.

News of the return of a convention in Oklahoma to replace Tole Country was shared. More information will be given as it is advertised.

The meeting was adjourned and Beth Stodieck taught a watercolor flower on canvas with a see-through design technique for the Make-It-and Take It project.

Respectfully Submitted,
Connie Alexander
Acting Secretary

2015 Board

Elected Officers:

President:	Yvonne Lowrie
Vice/Program/Pres. Elect:	Beth Stodieck
Vice/Membership/Directory:	Mary Helen Horne
Secretary/Newsletter:	Nancy Genetti
Treasurer:	Carolyn Martchenke, Sharlene King & Dusti Dancer

Committees:

Christmas Party:	Connie Alexander
Hospitality/Table Attendant:	Pam Martinez
Monthly Raffle:	Sharlene King
Website/Publicity:	Suzane Godley
Parliamentarian:	Armida Guzman
Saturday Paint-Ins/Seminar:	Dusti Dancers
Sunshine/Birthdays:	LuRue Hughes
Memory Boxes	Judy Wallis

Waiting on Photo

2015 Officers



SDP Corner

**Too Cool For School** by Beth

Recently I found an incredible program that all artists should watch. It's episode 1 of a show called Brain Games. If you have Netflix, it's a recent addition.

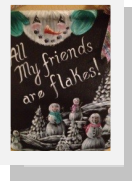
As I've taught over the years, you've heard me talk about illusion, color and value relationships, tricking the viewer's eye into seeing what you want it to see, tricks for making 2 dimensional paper or wood look like 3 dimensional objects.

This show talks about how surroundings and assumptions made by your brain effect colors seen and perspective. It does a fabulous job of explaining/demonstrating and describing how our brains make automatic assumptions about what we are seeing based on what it knows from the past. I urge you to check it out and, if you don't have Netflix, have a painter's watch party. You won't regret it! Mind blowing!

2015 Meeting Projects

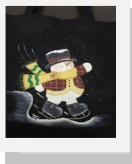
January 2015

All My Friends Are Flakes
by Beth Stodieck



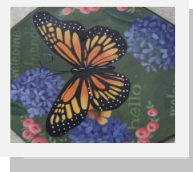
February 2015

Skating Snowman Tote Bag
by LaRue Hughes



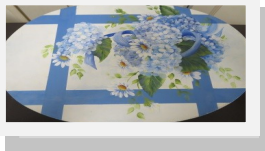
March 2015

Acrylic Monarch Butterfly
by Yvonne Lowrie



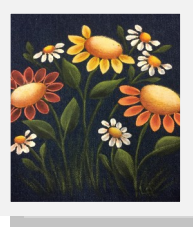
April 2015

Hydrangea Box
by Beth Stodieck



May 2015

Floral Tote Bag
By LaRue Hughes



September 2015
MakeItTakeIt
IT'S A SURPRISE!

October 2015
Halloween Paving Brick
by Dusti Dancer



SURFACE: scalloped edge, concrete, landscaping brick

November 2015
Lacework Ornament
by LaRue Hughes



SURFACE: Glass or plastic ornament, base coated in the color of your choice.
Sample is large puffed plastic disc.

Fort Worth Decorative Painters

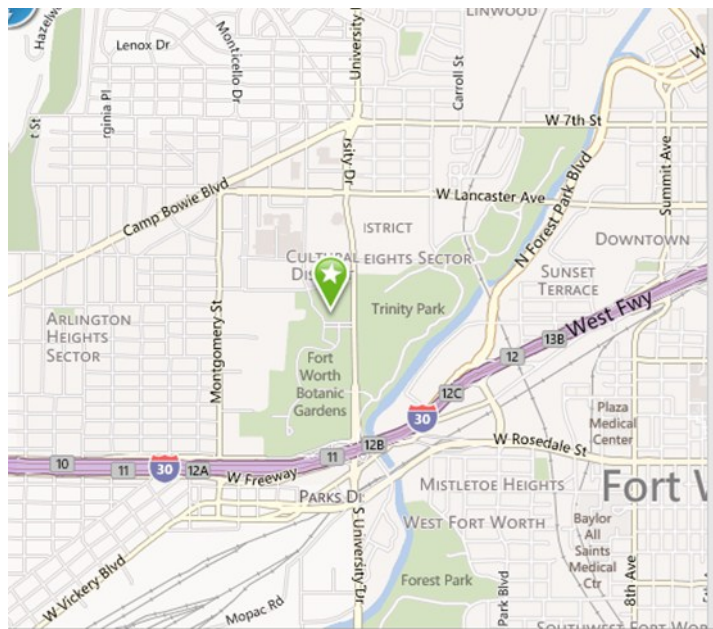
Nancy Genetti
Newsletter Editor
117 Eton Drive
Richardson, TX 75080

Facebook:

Fort Worth Decorative Painters (FWDP)

www.fwdecorativepainters.com


Next Newsletter Deadline
10/27/15



FWDP Meets the Third Monday of February, March, April, May, September, October & November.

January Meeting 4th Monday and the Christmas Party 2nd Monday in December.

At the

**Botanical Gardens
3220 Botanic Garden Blvd.
Fort Worth, TX 76107**

2015 Dates to Remember

October 19- Chapter Meeting
6:00 social time, 6:30 pm Business Meeting
Project: Halloween Paving Brick with Dusti
Dancer

November 7 - Paint with Us Saturday—
Watercolor poinsettia with Beth
Anniversary Reunion

November 16—Chapter Meeting
6:00 social time, 6:30 pm Business Meeting
Project: Ornament with LaRue

December 14—Christmas Party