

Firmware update for iLevil (print this file for your convenience)

You will need:

1. A computer running windows
2. The newest "iLevil.bin" file (contains latest firmware).
3. TeraTerm installed on your Computer.
4. USB Port driver (if your computer does not automatically recognize the device).

Where to download? Follow this link:

<https://www.dropbox.com/sh/6cjahzu2y74xjht/AABq8mFYwIsaf156H0Nkqnma?dl=0>

To download the newest iLevil firmware:

1. Look for the iLevil#-##.bin , where #-## is the firmware version you want to download for the corresponding iLevil generation. For example:  
iLevil2-42.bin, corresponds to Second Generation iLevil, firmware V4.2  
iLevil1-32.bin, corresponds to First Generation iLevil, firmware V3.2  
NOTE: For first generation iLevil, use iLevil1-##.bin, for second generation iLevil (title of product must say iLevil2), use iLevil2-##.bin.  
DO NOT TRY TO USE BIN FILES FOR THE INCORRECT ILEVIL MODEL, THIS WILL RENDER YOUR ILEVIL INOPERABLE.
2. Save the file to a known location. Do not modify or open this file!

To install Teraterm on your computer:

1. Download and Run the teraterm.exe file to install the program. This is the application required to transfer the iLevil##.bin file to the iLevil device.

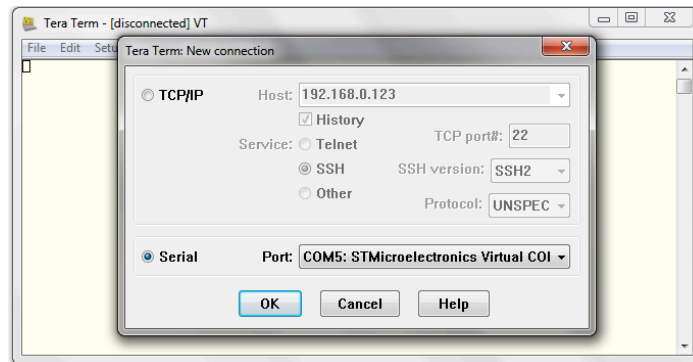
To install the USB driver on your computer:

1. Download and run the driver installation program.  
For 32-bit computers: Download the VCP.exe  
For 64-bit computers: Download VCP64.exe

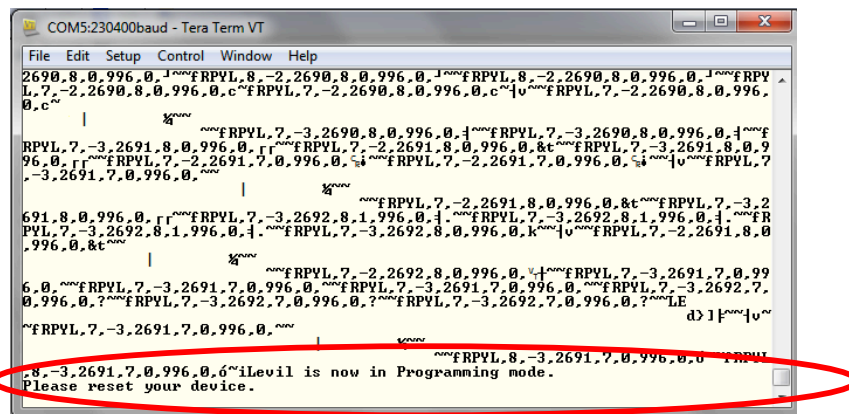
To update the firmware:

1. Turn ON the iLevil and then plug it to the USB socket on your computer. The iLevil must be on BEFORE connecting the USB.
2. Let your computer search for the driver automatically. Make sure the driver is installed and your computer recognizes the device. You can test this by unplugging the USB cable and plugging again. You should not get any errors.

- Open up TeraTerm and connect using Serial COM port (STMicroelectronics Virtual COM port). If you don't see the port, your computer might have not recognized the driver yet. Download and install the USB driver and try steps 1 to 3 again.



- Press the “u” key three times. This will enable data stream from the iLevel.
- Press the “p” key three times. This is the command to enter “programming” mode.



- The iLevel will prompt you to reset your device.
- Disconnect the USB cable, shut off the iLevel and close TeraTerm.
- Initialize everything, starting from the iLevel device (turn ON), then the USB connection.
- After your computer recognizes the device (you may hear a sound from your computer), open TeraTerm.
- Connect using same serial port.
- Press “1” key (only once) and wait for the response of the iLevel.
- When you see a “Waiting for file transfer” message or a string of “CCC...C, click on File -> Transfer -> YModem -> Send
- Browse for the iLevel#-##.bin file and wait for the transfer to finish.
- Reset your device, unplug USB cable and resume normal operations.