

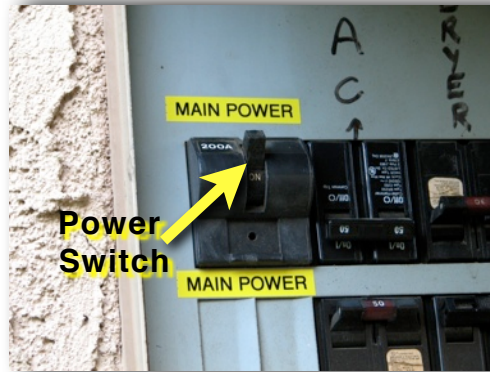
UTILITIES

EMERGENCY RESPONSE PROTOCOL FOR UTILITIES SHUT OFF

ELECTRICAL



1) Locate Electrical Panel on the West side of house and open



2) Move Main Power switch down to off position

WATER



1) Locate Water Valve on Front Curb. Remove Covers with "T" Wrench

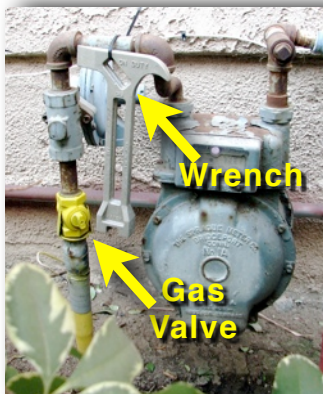


2) Place T Wrench on Protruding Rectangular Water Valve



3) Use T wrench to rotate valve one-half turn clockwise

GAS



3) Locate Gas Valve on West side of House



2) Remove Wrench and Place on Gas Valve



3) Rotate Valve 1/4 turn counterclockwise