

# KF Flanges

## KF BORED FLANGES

\*Material: SS 304L



Part Number	Size	Figure	A	B	C	D	E
KF-BF-10x038	KF10- $\frac{3}{8}$ "	1	30.00	12.20	-	9.65	5.10
KF-BF-16x025	KF16- $\frac{1}{4}$ "	1	30.00	17.20	-	6.50	5.10
KF-BF-16x038	KF16- $\frac{3}{8}$ "	1	30.00	17.20	-	9.65	5.10
KF-BF-16x050	KF16- $\frac{1}{2}$ "	2	30.00	17.20	10.16	12.95	5.10
KF-BF-16x075	KF16- $\frac{3}{4}$ "	2	30.00	17.20	16.51	19.30	4.40
KF-BF-25x025	KF25- $\frac{1}{4}$ "	1	40.00	26.20	-	6.50	5.10
KF-BF-25x038	KF25- $\frac{3}{8}$ "	1	40.00	26.20	-	9.65	5.10
KF-BF-25x050	KF25- $\frac{1}{2}$ "	2	40.00	26.20	10.16	12.95	5.10
KF-BF-25x075	KF25- $\frac{3}{4}$ "	2	40.00	26.20	16.51	19.30	5.10
KF-BF-25x100	KF25-1"	2	40.00	26.20	22.88	25.65	4.90
KF-BF-40x025	KF40- $\frac{1}{4}$ "	1	55.00	41.20	-	6.50	5.10
KF-BF-40x038	KF40- $\frac{3}{8}$ "	1	55.00	41.20	-	9.65	5.10
KF-BF-40x050	KF40- $\frac{1}{2}$ "	2	55.00	41.20	10.16	12.95	5.10
KF-BF-40x075	KF40- $\frac{3}{4}$ "	2	55.00	41.20	16.51	19.30	5.10
KF-BF-40x100	KF40-1"	2	55.00	41.20	22.88	25.65	5.10
KF-BF-40x150	KF40-1 $\frac{1}{2}$ "	2	55.00	41.20	35.58	38.35	5.10
KF-BF-50x025	KF50- $\frac{1}{4}$ "	1	75.00	52.20	-	6.50	5.10
KF-BF-50x038	KF50- $\frac{3}{8}$ "	1	75.00	52.20	-	9.65	5.10
KF-BF-50x050	KF50- $\frac{1}{2}$ "	2	75.00	52.20	10.16	12.95	5.10
KF-BF-50x075	KF50- $\frac{3}{4}$ "	2	75.00	52.20	16.51	19.30	5.10
KF-BF-50x100	KF50-1"	2	75.00	52.20	22.88	25.65	5.10
KF-BF-50x150	KF50-1 $\frac{1}{2}$ "	2	75.00	52.20	35.58	38.35	5.10
KF-BF-50x200	KF50-2"	2	75.00	52.20	48.26	51.05	5.10

\*Note: SS 316L or Aluminum Material Available on Request.

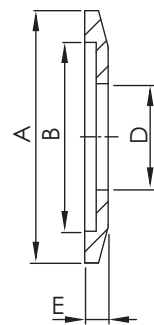


Figure 1

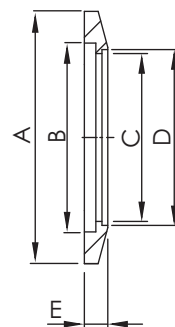


Figure 2

**K F  
DN**

## KF FLANGE PLASTIC CAP

\*Material: PE



Part Number	Size	A	B
KF-PC-16	KF10/ 16	32.00	30.00
KF-PC-25	KF25	42.00	40.00
KF-PC-40	KF40	57.00	55.00
KF-PC-50	KF50	77.00	75.00

