

FANTASY
illustrator

FXPosé Traditional

SHOWCASING THE FINEST TRADITIONAL FANTASY ARTISTS

FXPosé Traditional art

Joseph Murphy

LOCATION: US
WEB: www.jmmurphyillustrator.com
EMAIL: jmmurphyillustrator@yahoo.com
MEDIA: Gouache, ink, acrylics



"I'm greatly influenced by illustrators Mark English and Bernie Fuchs, whose work made me completely change my portfolio from very tight realism to a more expressionistic style of contemporary illustration," says Joseph, a freelance illustrator who works in book publishing and the entertainment markets.

The artist's work has appeared in shows and exhibitions through the Society of Illustrators of NY/Los Angeles, 3x3 Magazine, Creative Quarterly and ICON. Joseph says that he "appreciates the films of Terrence Malick and the mysticism of water as portrayed in literary fiction."

IMAGINEFX CRIT



"Joseph's style of painting, which has its roots in expressionism, benefits from his use of textures, which adds another beguiling dimension to his artworks. I love his nod to Turner's signature seascapes."

Claire Howlett,
Editor

1 FAIRY

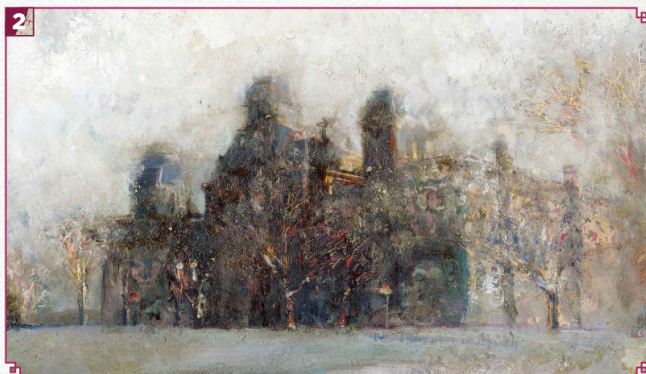
Ink, gouache and digital, 5x5in
"I wanted to experiment and see how far I could push the use of texture in one piece. By varying the types of textures with values, I was able to create a scene within an environment that could almost emerge from the page."

2 HALL OF LANGUAGES

Oil, 8.5x11in
"I've always loved the work of illustrator Mark English and have sought to capture the sense of atmosphere in his work."

3 THE MERCHANT

Copper, salt and vinegar, gouache, oil, tar and digital, 7.75x9.25in
"Inspired by the works of JMW Turner, I imagined how he would have depicted a figure in one of his landscapes."



ImagineFX January 2017

Email your submissions to fxpose@imaginefx.com

Email your submissions to fxpose@imaginefx.com

January 2017 ImagineFX

