

MADAGASCAR WATER PROJECT



NEW DRILLING – REHABILITATION WELL BETROKA

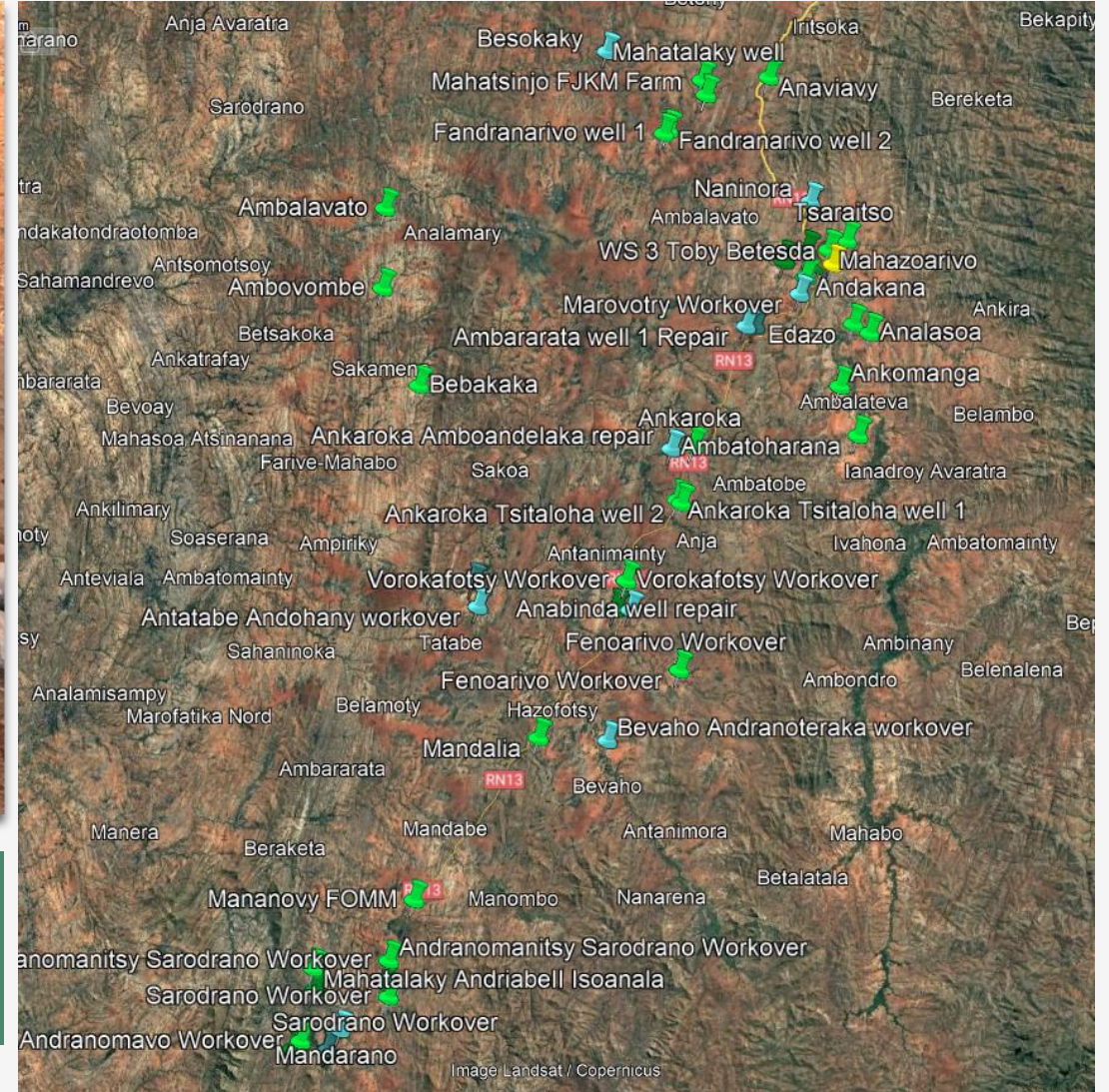


September - October – November 2024

MADAGASCAR WATER PROJECT IN BETROKA



MWP could drill 08 wells and was successful on rehabilitating 20 wells, in 26 villages for a number of beneficiaries around 19,800 people.



REHABILITATION WELL in 20 VILLAGES with more than 10,000 Beneficiaries



REHABILITATION

1. Fandranarivo 1	600
2. Fandranarivo 2	400
3. Mahatalaky Ambalaso	600
4. Ambatoharagna	209
5. Ankomanga	665
6. Ankaroka	2,000
7. Tsitaloha 1	450
8. Tsitaloha 2	300
9. Mandalia	320
10. Vorokafotsy	400
11. Ambatovita Ianabinda	450
12. Fenoarivo	550
13. Mahatalaky sarodrano	420
14. Sarodrano	850
15. Andranomanitsy sarodrano	520
16. Antsonjo	300
17. Andranomavo	200
18. Mandarano	450
19. Mahatalaky andriabe 2	340
20. Andaro	600
10,624	

DRILLING in 08 VILLAGES with 9,000 BENEFICIARIES

DRILLING

1. Betroka Centre District	1,200
2. Anaviavy	870
3. Mahazoarivo	1,340
4. Andakana	720
5. Tsaraitso	1,600
6. Edazo	800
7. Analasoa	1,100
8. Ambatovita Betroka	1,600
	9,230



The well is located in 23°16'20.73"S 46° 5'36.30"E, in the Fonkontany of Betroka Centre, Commune Betroka, District Betroka, Region Anosy, There are more than 1,200 people use the well.

People drink dirty river which go dry during the Dry season.

MWP drilled a well in the village with a flow rate of 2,400L/h.



BETROKA CENTRE (IN THE DISTRICT COMPOUND) 23°16'20.73"S 46° 5'36.30"E

NEW DRILLING 01

TYPE OF WORK: New Drilling

TOTAL DEPTH: 28m

FLOW: 2,400/h

STATIC LEVEL: 8.3m

DYNAMIC LEVEL: 18.3m

QUALITY OF WATER: Fresh

PUMP: INDIA MARK III

DATE: August 4, 2024

GPS Coordinates 23°16'20.73"S 46° 5'36.30"E



ANAIVAVY 23° 8'9.79"S 46° 3'13.41"E

NEW DRILLING 02

Anaviavy is a Fonkontany with 870 people, located in 23° 8'9.79"S 46° 3'13.41"E, in the Commune Ambalasoà, District Betroka, Region Anosy, People do farming.

MWP drilled a well in the village with a flow rate of 4,500L/h.



ANAIVAVY 23° 8'9.79"S 46° 3'13.41"E

NEW DRILLING 02

TYPE OF WORK: New Drilling
TOTAL DEPTH: 32m
FLOW: 4,500L/h
STATIC LEVEL: 3m
DYNAMIC LEVEL: 6m
QUALITY OF WATER: Fresh
PUMP: India Mark III
DATE: August 11, 2024
GPS Coordinates 23° 8'9.79"S 46° 3'13.41"E



MAHAZOARIVO 23°15'37.20"S 46° 6'2.38"E

NEW DRILLING 03

The well in Mahazoarivo is located in 23°15'37.20"S 46° 6'2.38"E, in the Commune Betroka, District Betroka, Region Anosy, with a population number of 1,340.

The village has never had any potable water, people drink dirty hand dug bucket well which go dry during the Dry season.

MWP drilled a well in the village with a flow rate of 1,300L/h.



MAHAZOARIVO 23°15'37.20"S 46° 6'2.38"E

NEW DRILLING 03

TYPE OF WORK: New Drilling
TOTAL DEPTH: 38.5m
FLOW: 250L/h
STATIC LEVEL: 6m
DYNAMIC LEVEL: 10m
QUALITY OF WATER: Fresh
PUMP: India Mark III
DATE: August 14, 2024
GPS Coordinates 23°15'37.20"S 46° 6'2.38"E



ANDAKANA 23°16'47.26"S 46° 4'56.39"E

NEW DRILLING 04

The well in Andakana is located in 23°16'47.26"S 46° 4'56.39"E, in the Commune Betroka, District Betroka, Region Anosy, with a population number of 715. People do farming.

The village has never had any potable water, people drink dirty river which go dry during the Dry season.

MWP drilled a well in the village with a flow rate of 300L/h.



ANDAKANA 23°16'47.26"S 46° 4'56.39"E

NEW DRILLING 04

TYPE OF WORK: New Drilling
TOTAL DEPTH: 31m
FLOW: 300L/h
STATIC LEVEL: 8m
DYNAMIC LEVEL: 10m
QUALITY OF WATER: Fresh
PUMP: India Mark III
DATE: August 17, 2024
GPS Coordinates 23°16'47.26"S 46° 4'56.39"E



TSARAITSO 23°15'12.56"S 46° 6'53.01"E

NEW DRILLING 05



The well in TSARAITSO is located at 23°15'12.56"S 46° 6'53.01"E, Commune Tsaraitso, District Betroka, Region Anosy, with a population number of 1,600. People do farming. The village has never had any potable water, people drink dirty river which go dry during the Dry season. MWP drilled a well in the village with a flow rate of 4,000L/h.

TSARAITSO 23°15'12.56"S 46° 6'53.01"E

NEW DRILLING 05

TYPE OF WORK: New Drilling

TOTAL DEPTH: 25m

FLOW: 4,000L/h

STATIC LEVEL: 3m

DYNAMIC LEVEL: 6m

QUALITY OF WATER: Fresh

PUMP: India Mark III

DATE: August 22, 2024

GPS Coordinates 23°15'12.56"S 46° 6'53.01"E



EDAZO 23°18'49.21"S 46° 7'11.23"E

NEW DRILLING 06

Edazo is a village in the Commune of Tsaraitso, Fonkontany Analaso, District Betroka, Region Anosy, with a population number of 800. People do farming.

The village has never had any potable water, people drink dirty river Mangoky which go dry during the Dry season.

MWP drilled a well in the village with a flow rate of 300L/h.



EDAZO 23°18'49.21"S 46° 7'11.23"E

NEW DRILLING 06

TYPE OF WORK: New Drilling
TOTAL DEPTH: 26.50m
FLOW: 300L/h
STATIC LEVEL: 6m
DYNAMIC LEVEL: 8m
QUALITY OF WATER: Fresh
PUMP: India Mark III
DATE: August 26, 2024
GPS Coordinates 23°18'49.21"S 46° 7'11.23"E



ANALASOA 23°19'13.27"S 46° 7'57.19"E

NEW DRILLING 07

ANALASOA is Fonkontany with 1,100 people in the Commune Tsaraitso, Fonkontany Analasoa, District Betroka, Region Anosy, People do farming.

The village has never had any potable water, people drink dirty river which go dry during the Dry season.

MWP drilled a well in the village with a flow rate of 9,000L/h.



ANALASOA 23°19'13.27"S 46° 7'57.19"E

NEW DRILLING 07

TYPE OF WORK: New Drilling

TOTAL DEPTH: 41m

FLOW: 9,000L/h

STATIC LEVEL: 14m

DYNAMIC LEVEL: 18m

QUALITY OF WATER: Fresh

PUMP: India Mark III

DATE: August 29, 2024

GPS Coordinates 23°19'13.27"S 46° 7'57.19"E



Ambatovita is located in 23°15'40.09"S 46° 5'0.03"E, in the Commune Betroka, District Betroka, Region Anosy, with a population number of 1,600. People do farming.

The village has never had any potable water, people drink dirty river which go dry during the Dry season.

MWP drilled a well in the village with a flow rate of 3,000L/h.



AMBATOVITA BETROKA 23°15'40.09"S 46° 5'0.03"E

NEW DRILLING 08

TYPE OF WORK: New Drilling
TOTAL DEPTH: 38.5m
FLOW: 3,000L/h
STATIC LEVEL: 11m
DYNAMIC LEVEL: 18m
QUALITY OF WATER: Fresh
PUMP: India Mark III
DATE: September 4, 2024
GPS Coordinates
23°15'40.09"S 46° 5'0.03"E



FANDRANARIVO 23°10'35.10"S 45°58'17.76"E

Fandranarivo is a village spread out into several hamlets and family groups, with a total population of more than 1,000 people, in the Fonkontany Mahatsinjo, District Betroka, Region Anosy. People do farming.

The village had 02 wells before but were vandalised and plugged. People do not have potable water for a decade, and stagnant water is the only source of drinking water.

MWP worked on the 02 plugged wells, and has them put back producing again.

Both wells produce 3,000L/h, were equipped with Indian pumps.



FANDRANARIVO Well 01 23°10'10.51"S 45°58'22.10"E

REHABILITATION 01

TYPE OF WORK: Rehabilitation
TOTAL DEPTH: 15m
FLOW: 3,000L/h
STATIC LEVEL: 2m
DYNAMIC LEVEL: 7.5m
QUALITY OF WATER: Fresh
PUMP: India Mark III
DATE: Sept 4, 2024
GPS Coordinates 23°10'35.15"S 45°58'17.74"E



FANDRANARIVO Well 02

23°10'26.00"S 45°58'30.02"E

REHABILITATION 02

TYPE OF WORK: Rehabilitation

TOTAL DEPTH: 22m

FLOW: 3,000L/h

STATIC LEVEL: 7m

DYNAMIC LEVEL: 10m

QUALITY OF WATER: Fresh

PUMP: India Mark III

DATE: September 8, 2024

GPS Coordinates 23°10'26.00"S 45°58'30.02"E



Mahatalaky Ambalasoia is a village of 600 people, in the Commune of Ambalasoia, District Betroka, Region Anosy, People do farming.

The village had well before but it was vandalised and plugged. People does not have potable water for a decade.

MWP worked on the plugged well, and have them put back producing again with a flow rate 2,000L/h, have equipped the well with an Indian pump.



MAHATALAKY-AMBALASOA 23° 8'17.02"S 46° 0'6.01"E

REHABILITATION 03

TYPE OF WORK:

Rehabilitation

TOTAL DEPTH: 33.5m

FLOW: 2,000L/h

STATIC LEVEL: 4m

DYNAMIC LEVEL: 23m

QUALITY OF WATER: Fresh

PUMP: India Mark III

DATE: Oct 2nd, 2024

GPS Coordinates

23° 8'17.02"S 46° 0'6.01"E



Ambatoharana is a village of 209 people, in the Commune Anabinda, District Betroka, Region Anosy, People do farming.

The village has well before but it was vandalised and plugged. People does not have potable water for a decade.

MWP worked on the plugged well, and have them put back producing again with a flow rate 3,000L/h, have equipped the well with an Indian pump.



AMBATOHARANA 23°23'36.81"S 46° 7'13.51"E

REHABILITATION 04

TYPE OF WORK: Rehabilitation
TOTAL DEPTH: 15m
FLOW: 3,000L/h
STATIC LEVEL: 2m
DYNAMIC LEVEL: 6m
QUALITY OF WATER: Fresh
PUMP: India Mark III
DATE: September 12, 2024
GPS Coordinates
23°23'39.02"S 46° 7'24.02"E



ANKOMANGA 23°21'31.02"S 46° 6'33.02"E

REHABILITATION 05

Ankomanga is a village of 665 people, in the Commune Analaso, District Betroka, Region Anosy, People do farming.

The village has well before but it was vandalised and plugged. People does not have potable water for a decade.

MWP worked on the plugged well, and have them put back producing again with a flow rate 3,000L/h, have equipped the well with an Indian pump.



ANKOMANGA 23°21'31.02"S 46° 6'33.02"E

REHABILITATION 05

TYPE OF WORK: Rehabilitation

TOTAL DEPTH: 24m

FLOW: 600L/h

STATIC LEVEL: 4m

DYNAMIC LEVEL: 22m

QUALITY OF WATER: Fresh

PUMP: IM III

DATE: September 16, 2024

GPS Coordinates 23°21'31.02"S 46° 6'33.02"E



TSITALOHA 23°26'25.10"S 45°59'0.92"E



Tsitaloha is a Fonkontany spread out into several hamlet, with a total population of more than 750 people, in the Commune of Anabinda, District Betroka, Region Anosy, People do farming.

The village has 02 wells before but were vandalised and plugged. People does not have potable water for a decade, stagnante water is the only source of drinking water. MWP worked on the 02 plugged wells, and have them put back producing again.

Both well produce 2,000L/h each and were equipped with an Indian pumps.

TSITALOHA Well01 23°26'25.00"S 45°58'53.02"E

REHABILITATION 06

TYPE OF WORK: Rehabilitation
TOTAL DEPTH: 21.5m
FLOW: 2,000L/h
STATIC LEVEL: 4m
DYNAMIC LEVEL: 14m
QUALITY OF WATER: Fresh
PUMP: India Mark III
DATE: September 20, 2024
GPS Coordinates 23°33'45.99"S 45°58'58.28"E



TSITALOHA Well02 23°26'34.18"S 45°59'5.03"E

REHABILITATION 07

TYPE OF WORK: Rehabilitation
TOTAL DEPTH: 20.5m
FLOW: 2,000L/h
STATIC LEVEL: 4m
DYNAMIC LEVEL: 17m
QUALITY OF WATER: Fresh
PUMP: India Mark III
DATE: September 27, 2024
GPS Coordinates 23°26'34.18"S 45°59'5.03"E



Ankaroka is a Fonkontany with more than 2,000 people, in the Commune Anabinda, District Betroka, Region Anosy, People do farming.

The village has well before but it was vandalised and plugged. People does not have potable water for a decade.

MWP worked on the plugged well, and have them put back producing again with a flow rate 3,000L/h, have equipped the well with an Indian pump.



ANKAROKA 23°24'5.73"S 45°59'39.00"E

REHABILITATION 08

TYPE OF WORK: Rehabilitation

TOTAL DEPTH: 19.5m

FLOW: 3,000L/h

STATIC LEVEL: 2m

DYNAMIC LEVEL: 7m

QUALITY OF WATER: Fresh

PUMP: India Mark III

DATE: October 5, 2024

GPS Coordinates 23°24'5.73"S 45°59'39.00"E



MANDALIA 23°36'41.02"S 45°52'20.02"E

REHABILITATION 09



Mandalia is a village of 320 people, in the Commune Anabinda, District Betroka, Region Anosy, People do farming.

The village has well before but it was vandalised and plugged. People does not have potable water for a decade.

MWP worked on the plugged well, and have them put back producing again with a flow rate 3,000L/h, have equipped the well with an Indian pump.

MANDALIA 23°36'41.02"S 45°52'20.02"E

REHABILITATION 09

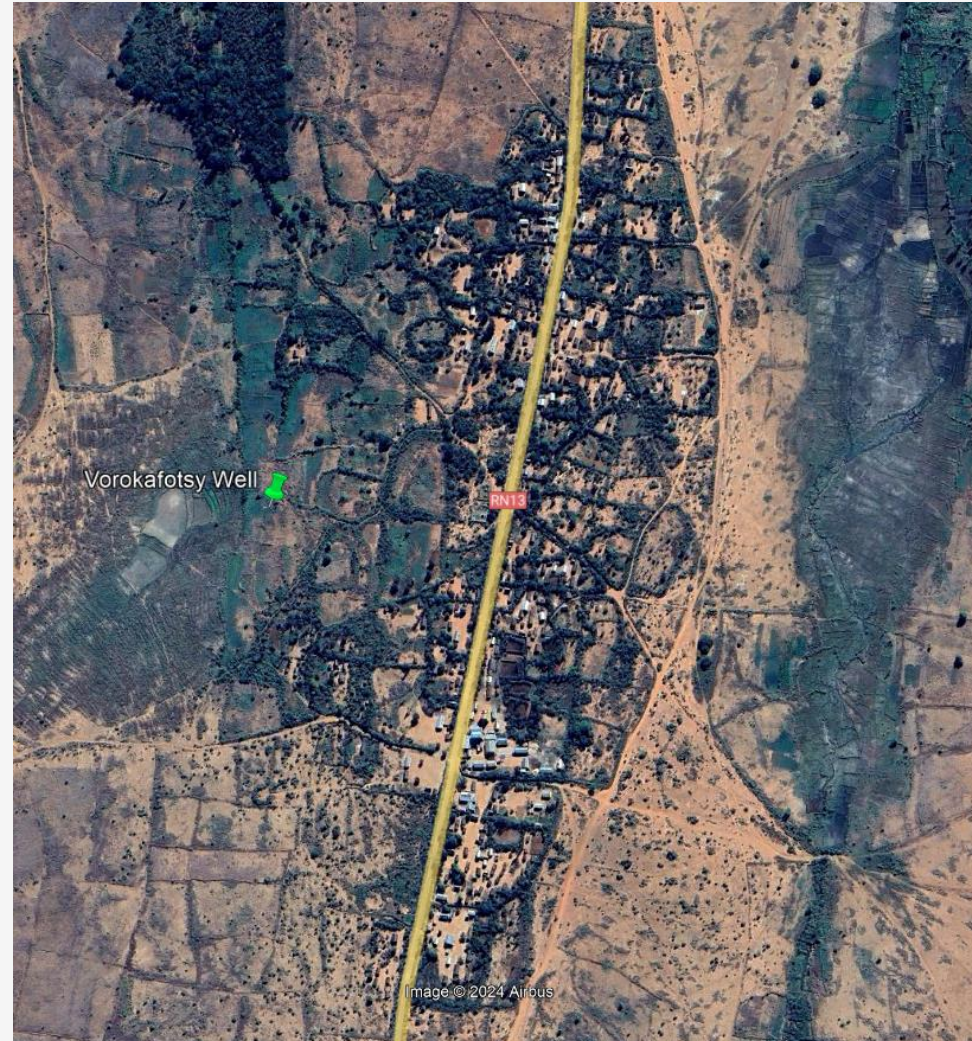
TYPE OF WORK: Rehabilitation
TOTAL DEPTH: 16m
FLOW: 3,000L/h
STATIC LEVEL: 3m
DYNAMIC LEVEL: 5m
QUALITY OF WATER: Fresh
PUMP: India Mark III
DATE: October 08, 2024
GPS Coordinates
23°36'41.02"S 45°52'20.02"E



Vorokafotsy is a village of 400 people, in the Commune Anabinda, District Betroka, Region Anosy, People do farming.

The village has well before but it was vandalised and plugged. People does not have potable water for a decade.

MWP worked on the plugged well, and have them put back producing again with a flow rate 3,000L/h, have equipped the well with an Indian pump.



VOROKAFOTSY 23°29'54.42"S 45°56'29.21"E

REHABILITATION 10

TYPE OF WORK: Rehabilitation

TOTAL DEPTH: 25.5m

FLOW: 1,500L/h

STATIC LEVEL: 4m

DYNAMIC LEVEL: 22m

QUALITY OF WATER: Fresh

PUMP: India Mark III

DATE: October 14, 2024

GPS Coordinates 23°29'54.42"S 45°56'29.21"E



Ambatovita is part of the Anabinda commune, District Betroka, Region Anosy there are 400 people using the well,, People do farming.

The village has well before but it was vandalised and plugged. People does not have potable water for a decade.

MWP worked on the plugged well, and have them put back producing again with a flow rate 1,000L/h, have equipped the well with an Indian pump.



AMBATOVITA IANABINDA 23°31'7.32"S 45°55'57.99"E

REHABILITATION 11

TYPE OF WORK: Rehabilitation
TOTAL DEPTH: 25m
FLOW: 1,000L/h
STATIC LEVEL: 3.5m
DYNAMIC LEVEL: 21m
QUALITY OF WATER: Fresh
PUMP: India Mark III
DATE: October 17, 2024
GPS Coordinates 23°31'7.32"S 45°55'57.99"E



FENOARIVO 23°33'45.99"S 45°58'58.28"E

REHABILITATION 12



Fenoarivo is a village of 550 people, in the Commune Anabinda, District Betroka, Region Anosy, People do farming. The village has well before but it was vandalised and plugged. People does not have potable water for a decade. MWP worked on the plugged well, and have them put back producing again with a flow rate 3,000L/h, have equipped the well with an Indian pump.

FENOARIVO 23°33'45.99"S 45°58'58.28"E

REHABILITATION 12

TYPE OF WORK: Rehabilitation

TOTAL DEPTH: 25m

FLOW: 3,000L/h

STATIC LEVEL: 4m

DYNAMIC LEVEL: 20m

QUALITY OF WATER: Fresh

DATE: October 16, 2024

GPS Coordinates 23°33'45.99"S 45°58'58.28"E



SARODRANO 23°47'52.49"S 45°45'13.15"E

REHABILITATION 13



Sarodrano is a village of 850 people, in the Commune Anabinda, District Betroka, Region Anosy, People do farming.

The village has well before but it was vandalised and plugged. People does not have potable water for a decade.

MWP worked on the plugged well, and have them put back producing again with a flow rate 3,000L/h, have equipped the well with an Indian pump.

SARODRANO 23°47'52.49"S 45°45'13.15"E

REHABILITATION 13

TYPE OF WORK: Rehabilitation
TOTAL DEPTH: 13.5m
FLOW: 3,000L/h
STATIC LEVEL: 6m
DYNAMIC LEVEL: 10.4m
QUALITY OF WATER: Fresh
DATE: October 18, 2024
GPS Coordinates
23°47'52.49"S 45°45'13.15"E



MAHATALAKY SARODRANO 23°47'14.45"S 45°45'0.08"E

REHABILITATION 14



Mahatalaky Sarodrano is a village of 420 people, in the Fonkontany of Sarodrano, Commune Anabinda, District Betroka, Region Anosy, People do farming. The village has well before but it was vandalised and plugged. People does not have potable water for a decade. MWP worked on the plugged well, and have them put back producing again with a flow rate 700L/h, have equipped the well with an Indian pump.

MAHATALAKY SARODRANO 23°47'14.45"S 45°45'0.08"E

REHABILITATION 14

TYPE OF WORK: Rehabilitation
TOTAL DEPTH: 18.5m
FLOW: 700L/h
STATIC LEVEL: 4m
DYNAMIC LEVEL: 14m
QUALITY OF WATER: Fresh
DATE: October 20, 2024
GPS Coordinates
23°47'14.45"S 45°45'0.08"E





Andranomanitsy is a village of 480 people, in the Fonkontany of Sarodrano, Commune Anabinda, District Betroka, Region Anosy, People do farming. The village has well before but it was vandalised and plugged. People does not have potable water for a decade. MWP worked on the plugged well, and have them put back producing again with a flow rate 3,000L/h, have equipped the well with an Indian pump.

ANDRANOMANITSY SARODRANO 23°46'18.75"S 45°45'14.22"E

REHABILITATION 15

TYPE OF WORK: Rehabilitation
TOTAL DEPTH: 30m
FLOW: 3,000L/h
STATIC LEVEL: 6m
DYNAMIC LEVEL: 25m
QUALITY OF WATER: Fresh
DATE: October 22, 2024
GPS Coordinates
23°46'18.75"S 45°45'14.22"E



ANTSONJO 23°50'8.11"S 45°40'39.73"E

REHABILITATION 16



Antsonjo is a village of 300 people, in the Commune Isoanala, District Betroka, Region Anosy, People do farming. The village has well before but it was vandalised and plugged. People does not have potable water for a decade. MWP worked on the plugged well, and have them put back producing again with a flow rate 200L/h, have equipped the well with an Indian pump.

ANTSONJO 23°50'8.11"S 45°40'39.73"E

REHABILITATION 16

TYPE OF WORK: Rehabilitation
TOTAL DEPTH: 24.5m
FLOW: 200L/h
STATIC LEVEL: 6m
DYNAMIC LEVEL: 22m
QUALITY OF WATER: Fresh
DATE: October 24, 2024
GPS coordinates:
23°50'8.11"S 45°40'39.73"E

Note: Not equipped 01



ANDRANOMAVO 23°49'47.86"S 45°41'2.55"E

REHABILITATION 17



Andranomavo is a village of 200 people, in the Commune Isoanala, District Betroka, Region Anosy, People do farming.

The village has well before but it was vandalised and plugged. People does not have potable water for a decade.

MWP worked on the plugged well, and have them put back producing again with a flow rate 3,000L/h, have equipped the well with an Indian pump.

ANDRANOMAVO 23°49'47.86"S 45°41'2.55"E

REHABILITATION 17

TYPE OF WORK: Rehabilitation
TOTAL DEPTH: 35m
FLOW: 3,000L/h
STATIC LEVEL: 7m
DYNAMIC LEVEL: 24m
QUALITY OF WATER: Fresh
DATE: October 26, 2024
GPS Coordinates
23°49'47.86"S 45°41'2.55"E



Mahatalaky Andriabe II is a village of 330 people, in the Commune Isoanala, District Betroka, Region Anosy, People do farming.

The village has well before but it was vandalised and plugged. People does not have potable water for a decade.

MWP worked on the plugged well, and have them put back producing again with a flow rate 700L/h.



MAHATALAKY ISOANALA 23°46'38.68"S 45°41'39.22"E

REHABILITATION 18

TYPE OF WORK: Rehabilitation

TOTAL DEPTH: 57m

FLOW: 700L/h

STATIC LEVEL: 8m

DYNAMIC LEVEL: 25m

QUALITY OF WATER: Fresh

DATE: October 28, 2024

GPS Coordinates 23°46'38.68"S 45°41'39.22"E

Note: Not equipped 02



Mandarano is a village of 450 people, in the Commune Isoanala, District Betroka, Region Anosy, People do farming.

The village has well before but it was vandalised and plugged. People does not have potable water for a decade. The

MWP worked on the plugged well, it was producing but went to dry during the dry season, so MWP team have upgraded it and have them put back producing again with a flow rate 1,000L/h.



MANDARANO 23°49'18.46"S 45°42'54.24"E

REHABILITATION 19

TYPE OF WORK: Upgrading previous
rehabilitation

TOTAL DEPTH: 30m

FLOW: 1,000L/h

STATIC LEVEL: 6m

DYNAMIC LEVEL: 24m

QUALITY OF WATER: Fresh

DATE: October 31, 2024

GPS Coordinates 23°49'18.46"S 45°42'54.24"E



ANDARO 23°47'30.87"S 45°41'45.11"E

REHABILITATION 19

Andaro is a village of 600 people, in the Commune Isoanala, District Betroka, Region Anosy, People do farming.

The village has well before but it was vandalised and plugged. People does not have potable water for a decade.

The MWP team was working on the plugged well, have upgraded it and have them put back producing again with a flow rate 1,000L/h.



ANDARO 23°47'30.87"S 45°41'45.11"E

REHABILITATION 20

TYPE OF WORK: Upgrading previous
rehabilitation

TOTAL DEPTH: 29.5m

FLOW: 3,000L/h

STATIC LEVEL: 6m

DYNAMIC LEVEL: 14m

QUALITY OF WATER: Fresh

DATE: October 31, 2024

GPS Coordinates

23°47'30.87"S 45°41'45.11"E

