




S/M	REVISION	APP. DATE
A		

**Install of one SCC 990 Flexible Andon Board & 8 Speaker Installation Hardware**

#	Description:	Manufacture	Part/Model Number	Unit of Measure	Purchase Quantity
1	3/8" 3000lb. WLL Galvanized Bolt Nut & Cotter Anchor Shackle	Fastenal Pricing	0504876	each	8
2	5/16" Grade 80 Chain 500 foot drum	Fastenal Pricing	45034	per foot	80
3	1/4" Class 6 x 19 Fiber Core Wire Rope 500 foot need about 80 per board	Fastenal Pricing	45576	per foot	80
4	1/4" Closed Galvanized Wire Rope Thimble	Fastenal Pricing	43443	each	4
5	1/4" Drop Forged Wire Rope Clip	Fastenal Pricing	43423	each	8
6	1/2" High Strength Nut (Furnished with item 8)	Fastenal Pricing	33895	each	4
7	1/2" Heavy Lock Washer	Fastenal Pricing	42445	each	4
8	1/2"-13 x 4-1/2" Shank Length Hot Dipped Galvanized Drop Forged Eye Bolt	Fastenal Pricing	33847	each	4
9	1/2" High Strength Flat Washer	Fastenal Pricing	33847	each	4
10	Unistrut Channel: 1-5/8" x 2 3/4", 12 Gage, Back-to-Back, Slotted Holes P3001SH	Unistrut (Atkore)	P3001SH	1' (10' sticks)	1
11	Unistrut Flat Plate Fitting: Width 1-5/8" x 1-5/8", Thickness 1/4" P1064	Unistrut (Atkore)	P1064	each	8
12	Unistrut Beam Clamp: 1-5/8" x 5" P2786	Unistrut (Atkore)	P2786	each	4
13	Andon Speaker, SPEAKER STATIC CNTRL 977-SPKR-R EXTERNAL	SCC	1032-006X	each	8
14	1/4" Beam Clamp: Speaker Installation	Appleton	BH-500	each	100
15	Speaker Cable/Wire: Order in 1,000' spools	Belden	8471	per foot	1,000
16	Bridle Rings and Saddles: 1/4"-20 x 7/8" 2 Boxes (50/Box)	B-Line	BRS-32A		60
17	Cat5e Cable: General Cable GenSPEED® 5000, 1,000 ft. Pull-Pac® II, Non-Plenum, Blue For one board using 333feet of 1000foot roll	General Cable			333
18	Wire Nuts: For Speaker Terminations			each	16

Installation contractor responsible for all local practices/codes and structural load verification

 30460 WIXOM ROAD WYANDOMI, MI 48186 FAX (248) 926-4412	Customer Approval	By	Scale	Sheet #
	<input type="checkbox"/> M/T <input type="checkbox"/> App	<input type="checkbox"/> Approved <input type="checkbox"/> Not Approved	<input type="checkbox"/> 1/4" <input type="checkbox"/> 1/2" <input type="checkbox"/> 3/4" <input type="checkbox"/> 1" <input type="checkbox"/> 1 1/2" <input type="checkbox"/> 2" <input type="checkbox"/> 3" <input type="checkbox"/> 4" <input type="checkbox"/> 6" <input type="checkbox"/> 8" <input type="checkbox"/> 12" <input type="checkbox"/> N/A	Part # SCC 990 Title: FLEXIBLE ANDON BOARD INSTALLATION DRAWING

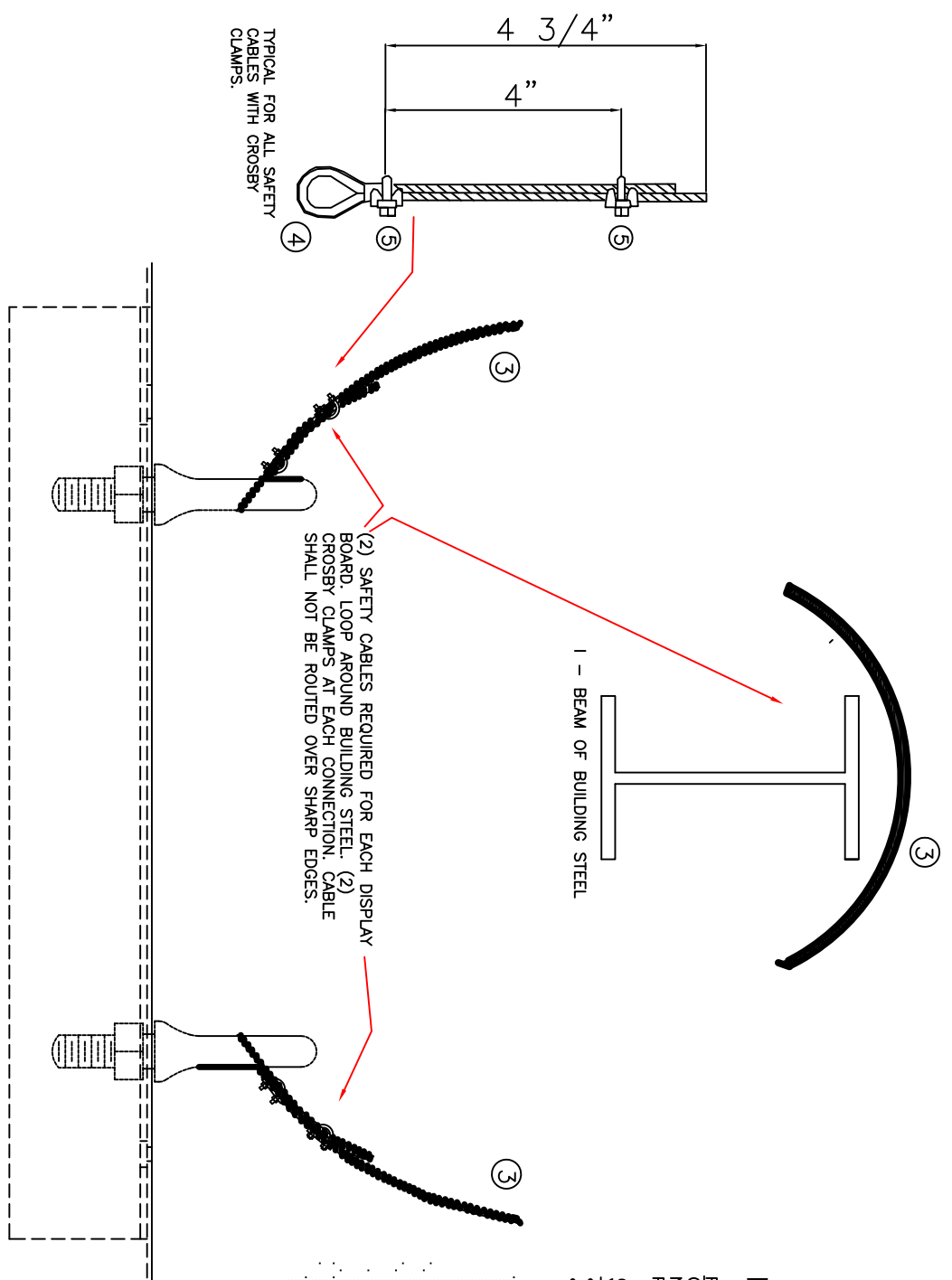
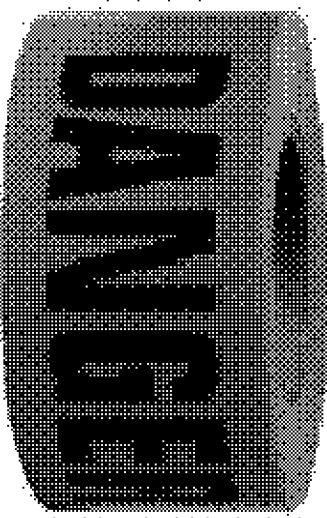
SWM	REVISION	APP DATE
A		

**BARRICADE PERIMETER TAPE**

RED DANGER TAPE (INDICATES HAZARD TO PEOPLE). CROSSING THIS BARRICADE COULD LEAD TO INJURY. NEVER CROSS RED BARRICADE TAPE UNLESS GRANTED PERMISSION BY AN AUTHORIZED EMPLOYEE.

**SOME EXAMPLES INCLUDE:**

- OVERHEAD WORK, ARIAL LIFT, MOBILE CRANE, ETC.
- RIGGING APPLICATIONS



TYPICAL FOR ALL SAFETY CABLES WITH CROSBY CLAMPS.

**SEE WEB LINKS FOR MORE INFO.**

- [http://www.constructionstafety.com/toolbox/documents/wireropcableclips\\_000.pdf](http://www.constructionstafety.com/toolbox/documents/wireropcableclips_000.pdf)
- <http://www.fidlock.com/wrclips.html>
- [http://www.softeng.net/index.php?option=com\\_content&view=article&id=862&Itemid=178](http://www.softeng.net/index.php?option=com_content&view=article&id=862&Itemid=178)

**WARNINGS AND APPLICATION INSTRUCTIONS.**

- THIS APPLICATION REQUIRES TWO CROSBY WIRE ROPE CLAMPS - INSTALLATION INSTRUCTIONS LIVE END REST IN THE SADDLE.
- 1st CLAMP APPLY APPROXIMATELY 3/4" FROM DEAD END UBOLET IS PLACED OVER DEAD END OF 1/4" WIRE ROPE.
  - 2ND CLAMP APPLY NEAR THE THIMBLE.
- NOTE: ALL NUTS TIGHTEN EVENLY, ALTERNATING TURNS.

Installation contractor responsible for all local practices/codes and structural load verification

<p>30460 WIXOM ROAD WIXOM, MI 48189 FAX (248) 926-4412</p>	<p>Customer Approval</p> <p>By _____</p>	<p>Date</p> <p>____/____/____</p>	<p>THIS FLEXIBLE ANDON BOARD INSTALLATION DRAWING</p> <p>Page # 990INST-SCC</p>
	<p>Scale</p> <p>N/A</p>	<p>Released for Prod.</p> <p>1:000 on 3/1/08</p>	<p>Scale</p> <p>N/A</p>