

## SCTA El Mirage Covid-19 Mitigation Plan

SCTA will establish and implement protective measures to slow the spread of COVID-19 (CV19) at El Mirage lakebed during landspeed timed trials which are held on BLM lands. These guidelines have been adopted from San Bernardino County Covid-19 reopening plan compliance and template. The procedures outlined in this document will be adjusted as necessary to follow any future/new guidance that may come from the State of California.

SCTA will spread the word on requirements through use of Constant Contact and multiple social media outlets.

### SCTA Trailer Locations

SCTA will make every effort to follow these guidelines:

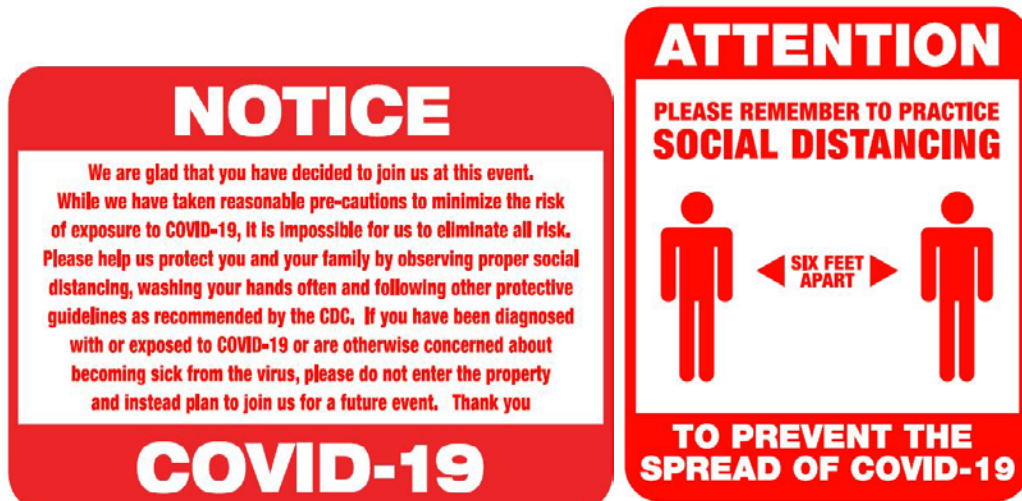
- Clean and sanitize all touched surfaces between each customer. Volunteers should sanitize hands and equipment between handling payments.
- Mandatory masks/face coverings within 6 ft of others in public areas which include Registration Trailer, Inspection Trailers, Merchandise Trailer, Food lines, Start Line and any other Public Area where people cannot social distance at least 6 ft.

In addition:

- Cleaning supplies will be single use (paper towels, etc.)
- Install Sneeze Guards on all Trailers
- Hand Sanitizing Stations will be outside of each Trailer and inside each Porta Potty.

### Signage/Banners

- We will display signage at the entrance to the lakebed to inform all volunteers, participants & spectators that they should:
  - Practice Social Distancing
  - Wash Your Hands often and follow guidelines recommended by the CDC
  - Avoid entering if you have been diagnosed or have been exposed to Covid19 or otherwise concerned about becoming sick from the virus and avoid entering if they have a cough, fever, or feel generally unwell.



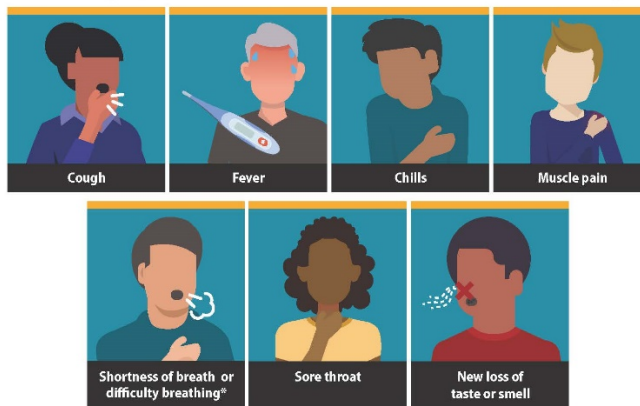
## Entering Event Area

We encourage volunteers, entrants & spectators to self-monitor for illness before entering the El Mirage lakebed each day. If they have the following symptoms or signs they should not come to the event:

- Fever (100.4°F/38°C or higher) or chills
- Cough that you cannot attribute to another health condition
- Shortness of breath or difficulty breathing that you cannot attribute to another health condition
- Sore throat that you cannot attribute to another health condition
- Muscle aches that you cannot attribute to another health condition, or that may have been caused by a specific activity (such as physical exercise)
- Loss of taste or smell

### Symptoms of Coronavirus (COVID-19)

Know the symptoms of COVID-19, which can include the following:



Symptoms can range from mild to severe illness, and appear 2-14 days after you are exposed to the virus that causes COVID-19.

**\*Seek medical care immediately if someone has emergency warning signs of COVID-19.**

- Trouble breathing
- Persistent pain or pressure in the chest
- New confusion
- Inability to wake or stay awake
- Bluish lips or face

This list is not all possible symptoms. Please call your medical provider for any other symptoms that are severe or concerning to you.



[cdc.gov/coronavirus](https://cdc.gov/coronavirus)

3/19/2020 10:41:00

## Pit Area

The main pit area is a minimum of 2 miles long to allow adequate camping space for the race teams and minimal congestion. Only family members and household members will be permitted to camp in a close group. Non-family members must camp far enough away to allow for adequate social distancing.

## Inspection/Registration

- Registration and tech inspection will allow only the driver of record, vehicle owner and one team member into inspection area.
- Masks required.
- We will set-up car inspection area with two separate vehicle line-ups, one on each side of the registration trailer. The trailer will be in the middle with minimum 15-foot distance for added

social distancing.

- Motorcycle Inspection area is a single line with two separate inspection bays. Staff will remind to wear masks and/or social distance.
- Hand sanitizing stations available.
- We will have specific areas marked off with cones at 6 ft intervals for social distancing at the registration line up and the armband/spectator line up. We will have signs indicating where to line up and staff available to remind to social distance in line and masks are mandatory.

### **Drivers Meeting**

The mandatory drivers meeting will be broadcast from the Start line on CB radio to help with social distancing.

### **Covid-19 Forms**

All race crew and volunteers must sign a Covid-19 waiver.

### **Hygiene**

- Require hand washing and/or hand sanitizing frequently
- Provide convenient access to hand sanitizing stations to include locations at registration/inspection areas, merchandise trailer and Start line.
- If a volunteer does not have required Personal Protective Equipment (PPE) such as face coverings, gloves, etc., the SCTA will provide.
- After using gloves, volunteers should wash their hands.
- Avoid touching your eyes, nose, or mouth.
- Avoid sharing food or personal items

### **Food Serving**

- Serving & Preparing of food will be done by an outside vendor if allowed by permit at time of event.

### **Toilet Facilities**

- The Porta Potties will be cleaned daily. Each Porta Potty will have Hand Sanitizer.