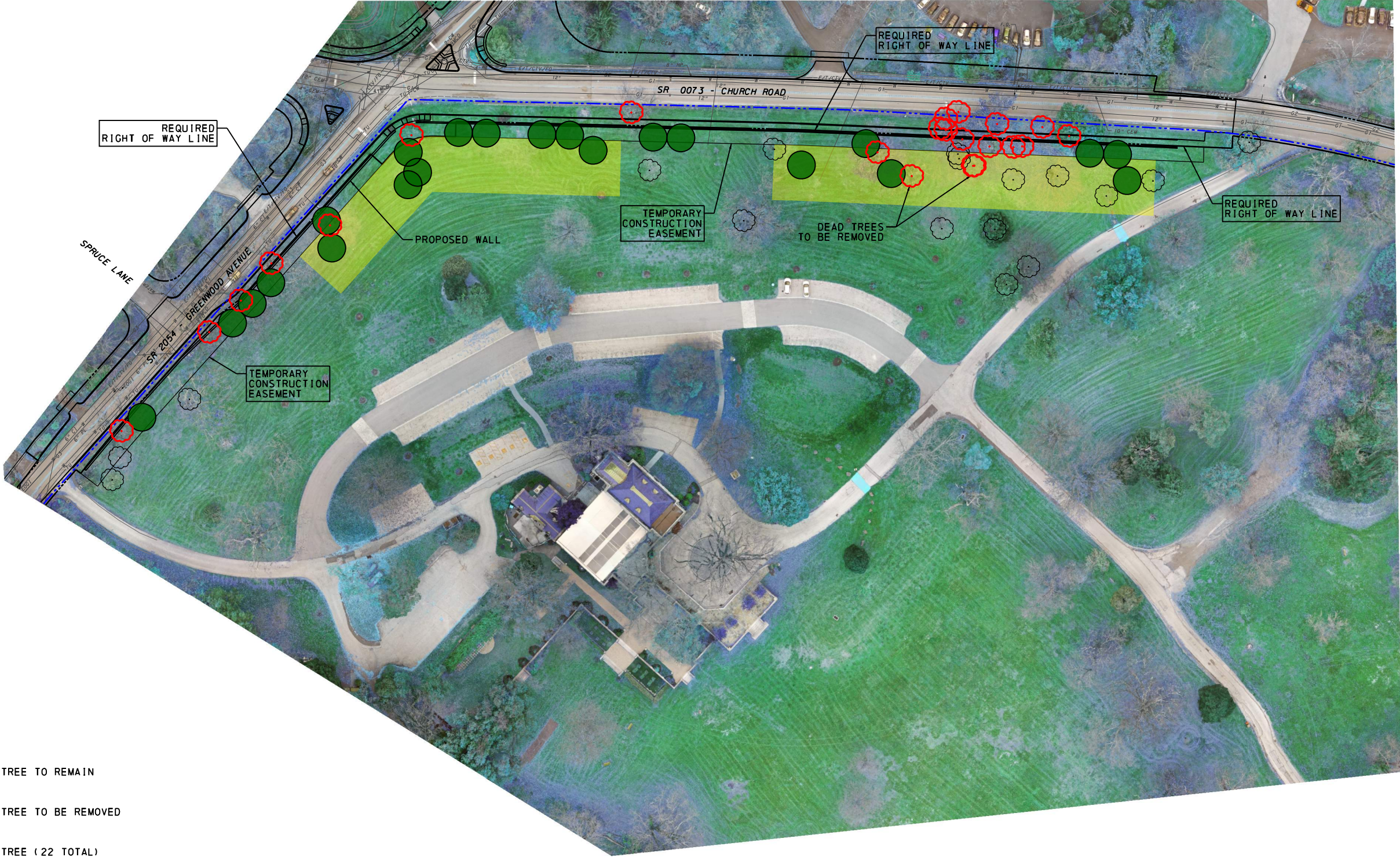


DISTRICT	COUNTY	ROUTE	SECTION	SHEET
6-0	MONTGOMERY	0073	04N	OF
CHELTENHAM TOWNSHIP				
REVISION NUMBER	REVISIONS		DATE	BY








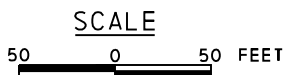
- LEGEND**
-  EXISTING TREE TO REMAIN
 -  EXISTING TREE TO BE REMOVED
 -  PROPOSED TREE (22 TOTAL)
 -  APPROXIMATE RIGHT OF ENTRY ACCESS AREA OUTSIDE OF TEMPORARY CONSTRUCTION EASEMENT
 -  NATIONAL REGISTER BOUNDARY

FIGURE 1 - TREE PLANTING PLAN IN CONSULTATION WITH CHELTENHAM TOWNSHIP



02/02/2023

PREPARED BY:

 1700 MARKET STREET, SUITE 1050
 PHILADELPHIA, PENNSYLVANIA 19103

2/2/2023 10:56:59 AM
 WSP CAD DATA
 P:\Projects\DOT_Land_Plan\DOT - Philly - Land - Copy.dwg
 P:\Projects\DOT_Land_Plan\DOT - Philly - Land - Copy.dwg
 P:\Projects\DOT_Land_Plan\DOT - Philly - Land - Copy.dwg
 P:\Projects\DOT_Land_Plan\DOT - Philly - Land - Copy.dwg
 P:\Projects\DOT_Land_Plan\DOT - Philly - Land - Copy.dwg