

SABER

Single Automated Business Exchange for Reporting



Filling the
Information Gap



**A private sector initiative to create a single
means to exchange operations disruption
and restoration information**

Existing Walgreens store status spreadsheet
used internally and shared as needed

SABER - Single Automated Business Exchange for Reporting

Walgreens Operations Center



Government Operations Centers



A Real-World Operational Case Study

1

Existing Spreadsheet

Site Number	City	State	Store/Store Status	Store Priority	Current Power Status	Generator Deployed	Damage Level
2088	11 TAMPA	FL	CLOSED		No Power	Heavy	
1054	11 TAMPA	FL	CLOSED		No Power	Heavy	
1700	11 TAMPA	FL	CLOSED		No Power	Light	
2707	11 TAMPA	FL	CLOSED		No Power	None	
1044	17 TAMPA	FL	CLOSED		No Power	Medium	
1407	11 TAMPA	FL	REOPEN Regular Hour		Regular	Y	None
1340	11 TAMPA	FL	CLOSED		No Power	None	

Existing Procedures Call for Emailing to Many; Desire is to Have Single SABER Sharing Provide Data To Authorized Recipients



Rule 1: Change the Procedures of Private Sector *Not at All* or as Little as Possible. Make the Technology Do the Work

SABER - Single Automated Business Exchange for Reporting

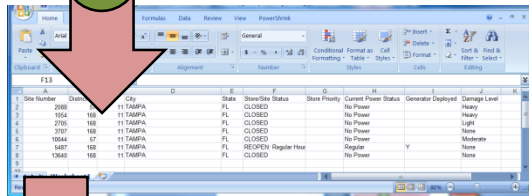
Walgreens Operations Center

Government Operations Centers



1

Existing Spreadsheet



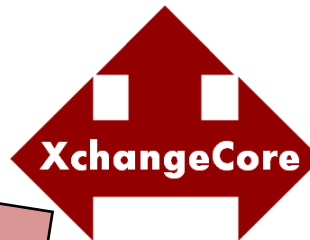
2

Single Upload Shares To Authorized Recipients



3

Transformed to
NIEM-compliant
Standardized Data



Rule 2: Adopt Standards for Data Exchange, Translate Private Sector Data Structures

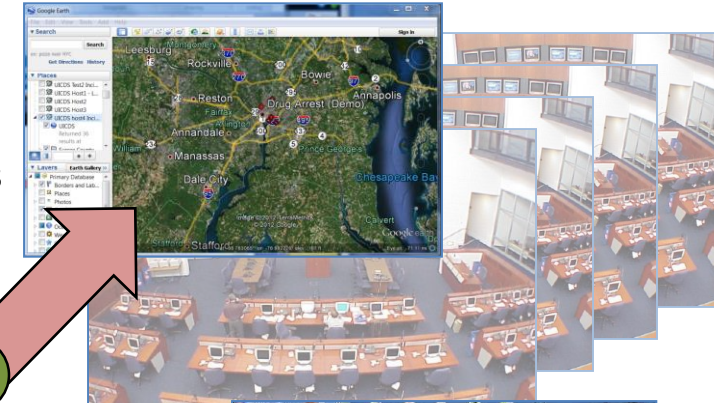
Uploaded to SABERspace.org

SABER - Single Automated Business Exchange for Reporting

Walgreens Operations Center



Government Operations Centers



Immediately Viewed
by Authorized Agencies
on Popular Map
Viewers and COPs

Existing Spreadsheet

A screenshot of a Microsoft Excel spreadsheet. The spreadsheet contains data organized in columns, including 'Site Number', 'City', 'State', 'Store Number', 'Store Name', 'Store Status', 'Current Power Status', 'Generator Deployed', and 'Damage Level'. The data is organized into rows, with some cells highlighted in blue.

Single Upload Shares To
Authorized Recipients



Uploaded to SABERspace.org

Transformed to
NIEM-compliant
Standardized Data

Rule 3: Provide Once, Share
Many Shown by Walgreens
Initial Implementation

Shared to Incident
Management Applications by
Agreement



Received in
Mobile Apps
that Can
Provide Field
Reports

SABER - Single Automated Business Exchange for Reporting

Walgreens Operations Center

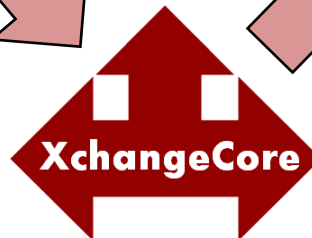


Future Fully Automated
Connection Replaces
Manual Process

Government Operations Centers



Transformed to
NIEM-compliant
Standardized Data



Available to
Authorized
Agencies

Shared to Incident
Management Applications by
Agreement

Rule 4: Fully Automate
Process for Those Enabled
Opens Potential for Daily Use



Received in
Mobile Apps
that Can
Provide Field
Reports

SABER - Single Automated Business Exchange for Reporting

Walgreens Operations Center

Government Operations Centers

Future Fully Automated
Connection Replaces
Manual Process

Available to
Authorized
Agencies

XchangeCore

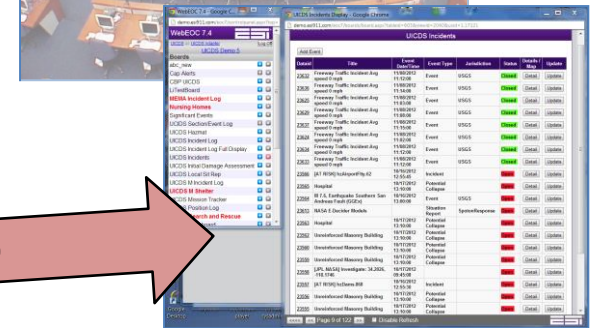
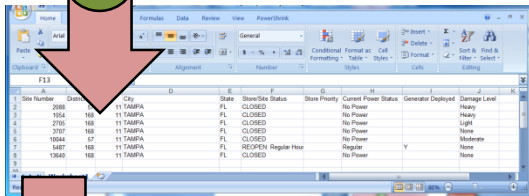
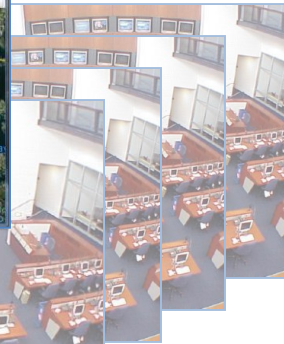
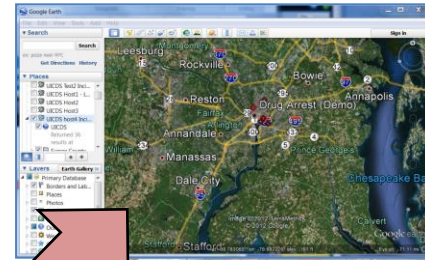
Simple, "Quick Win"
Spreadsheet of Disruptions
and Restoration Status

Transformed to
NIEM-compliant
Standardized Data

Shared to Incident
Management Applications by
Agreement

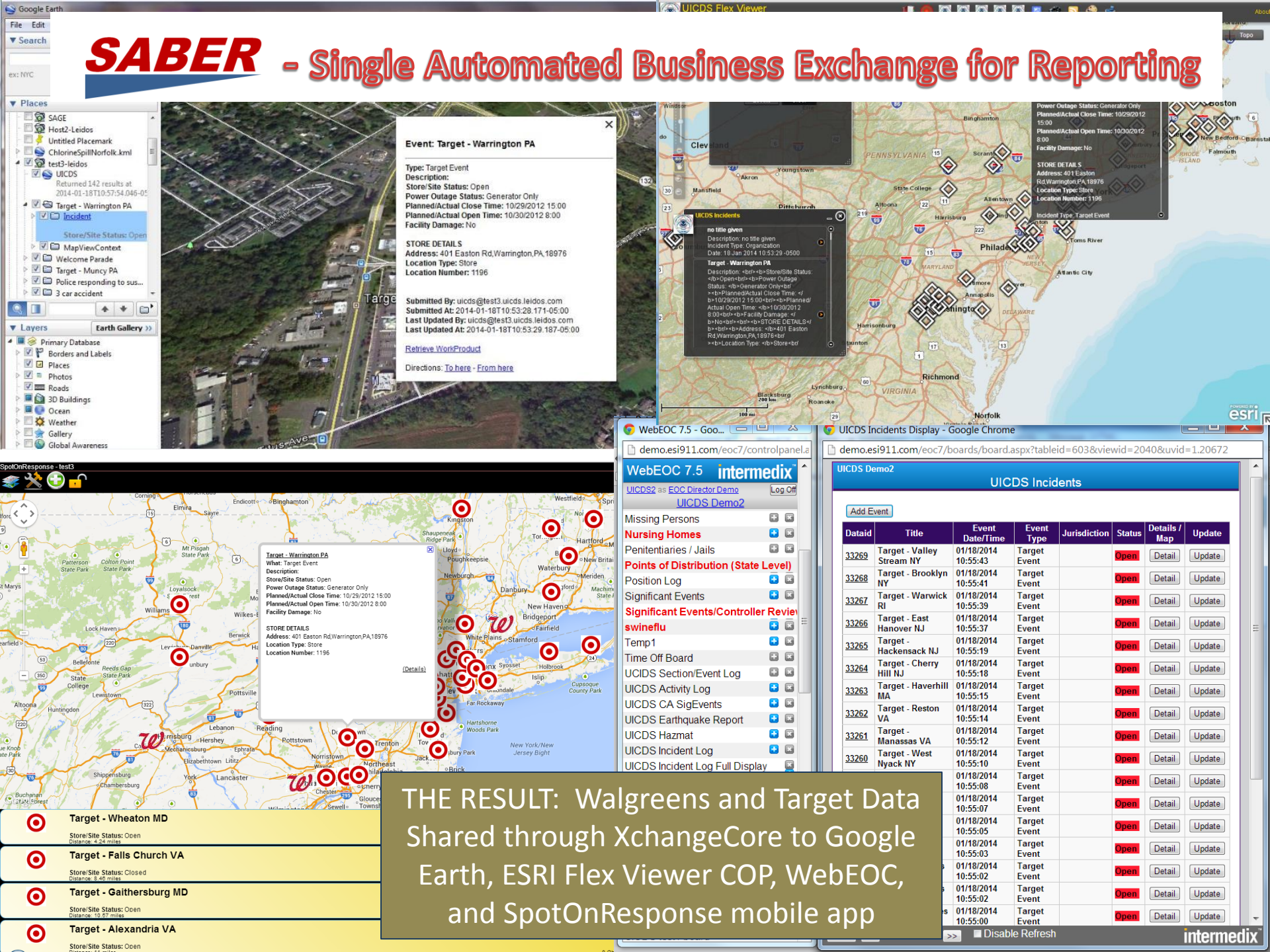
Rule 5: Start with "Quick
Win" to Build Community,
Automate When Possible

Received in
Mobile Apps
that Can
Provide Field
Reports



Uploaded to SABERspace.org

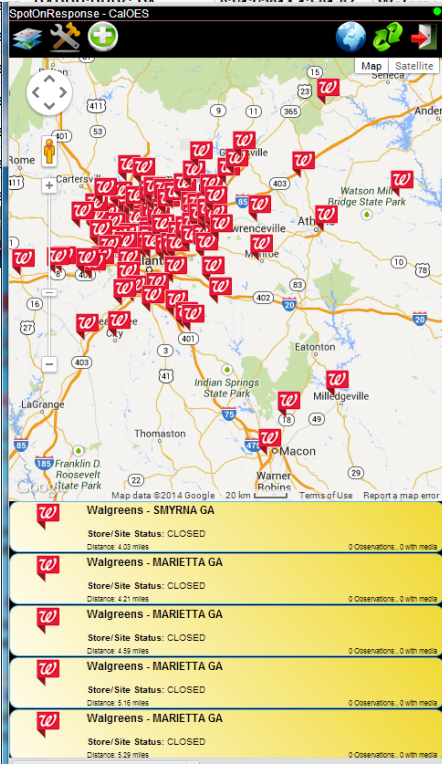
SABER - Single Automated Business Exchange for Reporting



SABER - Single Automated Business Exchange for Reporting

Add Event

DataId	Title	Event Date/Time	Event Type	Jurisdiction	Status	Details / Map	Update
33417	Walgreens - WAKE FOREST NC	02/13/2014 12:02:36	Walgreens		Open	Detail	Update
33416	Walgreens - DOUGLASVILLE GA	02/13/2014 12:00:30	Walgreens		Open	Detail	Update
33415	Walgreens - TRAVELERS REST SC	02/13/2014 12:00:01	Walgreens		Open	Detail	Update
33414	Walgreens - COLUMBIA SC	02/13/2014 12:03:13	Walgreens		Open	Detail	Update
33413	Walgreens - CHARLOTTE NC	02/13/2014 12:00:15	Walgreens		Open	Detail	Update
33412	Walgreens - CARY NC	02/13/2014 12:00:18	Walgreens		Open	Detail	Update
33411	Walgreens - ALPHARETTA GA	02/13/2014 12:02:02	Walgreens		Open	Detail	Update
33410	Walgreens - COLUMBIA SC	02/13/2014 12:01:33	Walgreens		Open	Detail	Update
33409	Walgreens - ATLANTA GA	02/13/2014 11:59:51	Walgreens		Open	Detail	Update
33408	Walgreens - THOMASVILLE NC	02/13/2014 12:02:22	Walgreens		Open	Detail	Update
33407	Walgreens - GREENSBORO NC	02/13/2014 12:02:53	Walgreens		Open	Detail	Update
33406	Walgreens - COLUMBIA SC	02/13/2014 11:59:48	Walgreens		Open		
33405	Walgreens - TOCCOA GA	02/13/2014 12:02:46	Walgreens		Open		
33404	Walgreens - MARTINEZ GA	02/13/2014 12:01:44	Walgreens		Open		
33403	Walgreens - MARIETTA GA	02/13/2014 12:04:07	Walgreens		Open		
33402	Walgreens - MARIETTA GA	02/13/2014 12:04:07	Walgreens		Open		
33401	Walgreens - MARIETTA GA	02/13/2014 12:04:07	Walgreens		Open		
33400	Walgreens - MARIETTA GA	02/13/2014 12:04:07	Walgreens		Open		
33399	Walgreens - MARIETTA GA	02/13/2014 12:04:07	Walgreens		Open		
33398	Walgreens - MARIETTA GA	02/13/2014 12:04:07	Walgreens		Open		
33397	Walgreens - MARIETTA GA	02/13/2014 12:04:07	Walgreens		Open		



Event: Walgreens - MARIETTA GA

Type: Walgreens
Description:
Store/Site Status: CLOSED
Store Priority:
Current Power Status: Regular
Generator Deployed:
Damage Level:

STORE DETAILS
Address: 1733 MACLAND RD SW, MARIETTA, GA, 30064
Store Type: 1
Retail Clinic: N
Open 24 Hrs: N
Store Number: 9272
NCPPD Provider ID: 1154070
District: 178
Region: 18
Operation: 18

Submitted By: jmorentz@sonicids1
Submitted At: 2014-02-13T17:01:17.972+00:00
Last Updated By: jmorentz@sonicids1
Last Updated At: 2014-02-13T17:01:17.972+00:00

[Retrieve WorkProduct](#)
Directions: [To here](#) - [From here](#)

calema.maps.arcgis.com/home/webmap/viewer.html?services=a1b4c9b417314c939f0be3d1ad3d4b14

HOME - Walgreens 4 AM Feb 13

Details Add Basemap Save Share Print Directions Measure Bookmarks Find address or place

Walgreens 4 AM Feb 13

KML by morentzj
Last Modified: February 13, 2014
0 ratings, 0 comments, 0 views

More Details...

Make your own map
Add to this map
Make a new map

Walgreens - JOHNSON CITY TN
Event: Walgreens - JOHNSON CITY TN

Type: Walgreens
Description:
Store/Site Status: CLOSED
Store Priority:
Current Power Status: Regular
Generator Deployed:
Damage Level:

STORE DETAILS
Address: 606 N BROADWAY
ST. JOHNSON CITY, TN, 37601
Store Type: 1
Retail Clinic: N
Open 24 Hrs: N
Store Number: 12373
NCPPD Provider ID: 4441731
District: 201

Zoom to

Esri.com ArcGIS Marketplace Help
Terms of Use Privacy Contact Us
Contact Us Report Abuse

Esri, DeLorme, FAO, USGS, EPA, NPS
esri

THE RESULT: WebEOC, Google Earth, SpotOnResponse Mobile App, ArcGIS Online Showing March Snowstorm Closure Status Available Through SABER

SABER - Single Automated Business Exchange for Reporting

Type: Walgreens
Description: Store/Site Status: Closed
Store Priority: N
Current Power Status: No Power
Generator Deployed: N
Damage Level: N
STORE DETAILS
Address: 5053 HWY 70 W, MOREHEAD CITY, NC, 28557
Store Type: 1
Retail Clinic: N
Open 24 Hrs: N
Store Number: 11895
NCPOP Provider ID: 3413969
District: 256
Region: 23
Operation: 23
Submitted By: uicds@host2.uicds.leidos.com
Submitted At: 2014-07-04T09:18:17.869-04:00
Last Updated By: uicds@host2.uicds.leidos.com
Last Updated At: 2014-07-04T09:18:17.869-04:00
[Retrieve WorkProduct](#)
[Directions: To here](#) - [From here](#)

Walgreens - LELAND NC
Store/Site Status: Partial
Distance: 561.82 miles
0 Observations, 0 with media
Walgreens - SOUTHPORT NC
Store/Site Status: Closed
Distance: 565.14 miles
0 Observations, 0 with media
Walgreens - CAROLINA BEACH NC
Store/Site Status: Closed
Distance: 572.95 miles
0 Observations, 0 with media
Walgreens - SWANSBORO NC
Store/Site Status: Closed
Distance: 597.88 miles
0 Observations, 0 with media
Walgreens - CAPE CARTERET NC
Store/Site Status: Closed
Distance: 601.43 miles
0 Observations, 0 with media
Walgreens - MOREHEAD CITY NC
Store/Site Status: Closed
Distance: 614.97 miles
0 Observations, 0 with media

WebEOC 7.5 intermedix
UICDS as EOC Director Demo
UICDS Demo
UICDS CA SigEvents
UICDS Earthquake Report
UICDS Hazmat
UICDS Incident Log
UICDS Incident Log Full Display
UICDS Incidents
UICDS Initial Damage Assessment
UICDS Local Sit Rep
UICDS M Incident Log

Dataid	Title	Event Date/Time	Event Type	Jurisdiction	Status	Details / Map	Update
36063	Walgreens - SOUTHPORT NC	07/04/2014 09:19:02	Walgreens		Open	Detail	Update
36062	Walgreens - WILMINGTON NC	07/04/2014 09:18:23	Walgreens		Open	Detail	Update
36061	Walgreens - CAPE CARTERET NC	07/04/2014 09:18:40	Walgreens		Open	Detail	Update
36060	Walgreens - SWANSBORO NC	07/04/2014 09:17:40	Walgreens		Open	Detail	Update
36059	Walgreens - LELAND NC	07/04/2014 09:19:51	Walgreens		Open	Detail	Update
36058	Walgreens - MOREHEAD CITY NC	07/04/2014 09:19:34	Walgreens		Open	Detail	Update
	Walgreens - CAROLINA BEACH NC	07/04/2014 09:17:58	Walgreens		Open	Detail	Update

THE RESULT: Hurricane Arthur Closure Status Available Through SABER on WebEOC, Google Earth, SpotOnResponse Mobile App, ArcGIS Online

SABER - Single Automated Business Exchange for Reporting

FloridaDisaster.org

Florida Division of Emergency Management



ADMIN BUSINESSS BSF18 INFO BROADCAST

FLVBEOC The Florida Virtual Business Emergency Operations Center
****BETA TESTING****

Right Click on the Map to place a search pin (Control + mouse click on MAC)

Business Name:
Town/City: (Only works for Florida)
Search radius: 20 in miles
Lat:
Lng:
Filter: ☒ Operating Normally ☒ Partially Operating ☒ Closed ☒ Permanent Closure
External Filters: ☐ Rx Response Data ☒ UICDS Data

Reset Map Remove Search Layer

A map of Florida with numerous red diamond markers indicating businesses that are closed. The markers are distributed across the state, with a higher concentration in the central and southern regions. Major cities like Jacksonville, Orlando, and Miami are labeled.

IEMA ILLINOIS EMERGENCY MANAGEMENT AGENCY Chris Matz vBEOC

Community Dashboard Capstone 14

Retail Status Options + Power Utilities Options + Social Media Map Options +

Description of store closures map 1 of 1
This map displays the open or closed status of retail stores due to incidents. Please click the Walgreens checkbox on the right side of the map to turn on the layer.

Walgreens Status Map 1 of 1

A map showing the status of Walgreens stores. Red markers indicate closed stores, while blue markers indicate open stores. A legend on the right side of the map shows the Base Layer (Open Street Map), Overlays (Walgreens, Counties), and a 'Selected Tool (enabled)' button.

Walmart Status 1 of 1

A map showing the status of Walmart stores. Blue markers indicate open stores, while red markers indicate closed stores. The map covers a region in Kentucky and Tennessee.

Walmart Status 1 of 1

Store/Site Status: CLOSED
Store Priority:
Current Power Status: No Power
Generator Deployed: No
Damage Level: None

STORE DETAILS
Address: 460 N US HIGHWAY
67 FLORISSANT, MO 63031
Store Type: 1
Retail Clinic: N
Hours 24 Hrs: Y
Store Number: 1124

App Panel
vBEOC
Home RTD
Document Center Calendars
Contacts Announce
Discuss Links
Photo Gallery Surveys
My Initiatives
Global
CSEPP - BGAD
CSEPP - Pueblo
CSEPP Tasks
FEMA Region V
Hampton Roads
Hawaii

THE RESULT: Florida Hurricane Exercise with FLVBEOC Portal and CAPSTONE Earthquake Exercise with Illinois vBEOC Portal using private sector business disruption status from SABER

SABER - Single Automated Business Exchange for Reporting

Join Us in SABER ...

- The benefit to the private sector is that outage or closure information can be provided to a single sharing site rather than 50 states and many other entities requesting status information.
- The benefit to the public sector is that all private sector disruption and restoration information is consolidated in a single source rather than available from hundreds of organizations.
- The efficiency and effectiveness of this new, national approach will save time and money while avoiding gaps, overlaps, and inconsistencies in critical information.

For further information, please contact:

Jim Williams, Walgreens, jim.williams@walgreens.com

Jim Morentz, SABER/XchangeCore, jim@jwmorentz.com