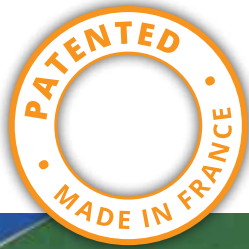


MLT

Minet Lacing Technology

Clip 'N Lock[®] Fasteners



Fasteners for Light-Duty Conveyor Belts



What is it? Clip 'N Lock® Fasteners

INNOVATION

Clip'N Lock is a low profile, light-duty fastener. It maintains the normal pitch and ensures an excellent gripping of the claws in wide conveyor belts. All of this is accomplished with 2 additional features to its highly-specialized design:

- Double rows of teeth for additional strength
- Continuous connection eliminates the risk of losing claws

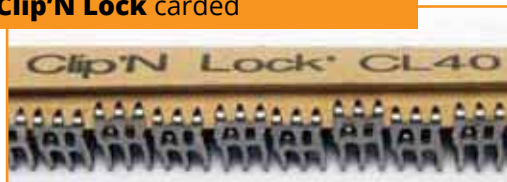
Double rows of teeth for additional strength



Continuously connected design eliminates risk of losing claws



Clip'N Lock carded



Need more information?
Please visit our website

MLTnorthamerica.com

Top side of **Clip'N Lock**

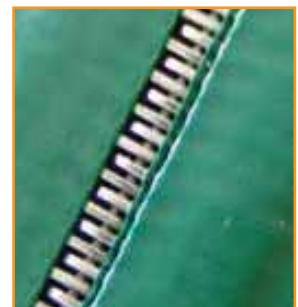


Bottom side of **Clip'N Lock**

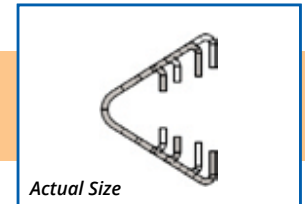
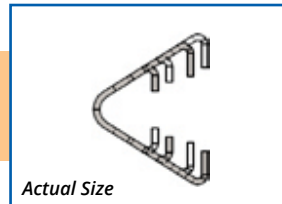
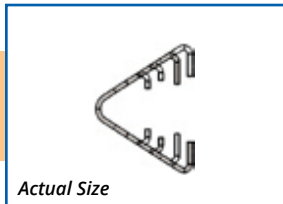
ADVANTAGES

- Continuously connected design, developed by Minet Lacing Technology's R&D organization:
 - Eliminates risk of losing claws or staples
 - Helps to maintain pitch in wide belts
 - Perfect for trough belts
- 33% more grip points provide extra strength compared to other fasteners

- **Integrated into the belt without extra thickness**
- **Perfect for trough belts**
- **Continuous teeth**



Technical Data



	CL 30	CL 40	CL 50
Lacing Pitch	2.54 mm	3.175 mm	3.67 mm
Belt Thickness (Regular point fastener)	1.5 to 2 mm .059" to .078"	2 to 3 mm .078" to .118"	3 to 5 mm .118" to .196"
Minimum Pulley Ø	50 mm 2"	60 mm 2.5"	75 mm 3"
Material	316 L antimagnetic stainless steel	316 L antimagnetic stainless steel	316 L antimagnetic stainless steel
Installation	MultiTool or Vice Tool (see below)		
Hinge	Nylon covered or bare stainless steel pin Ø 1.5 - 1.8 mm .059" - .070"	Nylon covered or bare stainless steel pin Ø 1.8 - 2.1 mm .070" - .083"	Nylon covered or bare stainless steel pin Ø 2 - 2.6 mm .078" - .097"
Packaging	In a standard box, with each containing 10 strips of 300 mm (12") OR 600 mm (24") OR 1200 mm (48")		

INSTALLATION TOOLS

FEATURES

- To install: **Self-Lock®** or **Clip 'N Lock**, Wire hook and flexible steel fasteners
- Module type tool
- 250 mm / 10" long jaws
- Different comb length, by request
- Can work on horizontal or vertical support

Can perform with :

- Hydraulic electric pump
- Pneumatic hydro pump
- Hydraulic hand pump

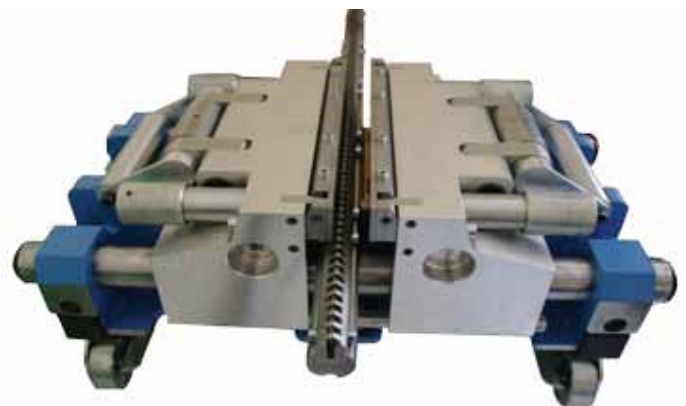


ADVANTAGES

- **Versatile**
- **Quick**
- **Integrated belt clamps**
- **Professional industrial quality**

1. MultiTool

Multi fasteners installation tool



2. Vice Tool





Belt repair with Super-Screw® Splice



Super-Screw® Lacings ready to go down in mine



MS® 55 Fasteners



Self-Lock Fasteners



Quality Products
Simplified Work



MR® Fasteners



Super-Screw Splice



Fix'N Go



Clip'N Lock Fasteners



Super-Screw Splice



Belt Skiver



RV6 Fastener



Technical Assistance



Innovative R&D



Product Info Online

Standard Products Ready to Ship



Training Available



Fast Turnaround

MLT, a full line of conveyor belt fasteners and conveyor belt products.

MLT Inc.
2011 Nuggett Rd.
High Point, NC 27263
Office: 336-434-0363
Fax: 336-434-2263
info@MLTnorthamerica.com
MLTnorthamerica.com

Distributor

