

## BC-REPLACING COOLING TRAY FAN BC-2 to BC-5

1



**IN THE EVENT YOUR COLING FAN GOES BAD**  
(OFTEN IF GOING BAD IT WILL SHORT OUT AND TRIP  
CIRCUIT BREAKER INSIDE ROASTER WHEN IT IS TURNED  
ON AT CONTROL PANEL)

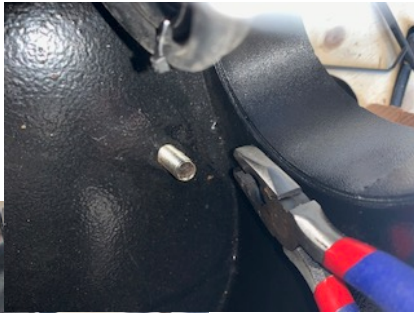
HERE IS INSTRUCTIONS ON HOW TO REPLACE IT:

1. YOU WILL NEED TO REMOVE THE COOLING TRAY TO GET TO BOLTS TO REMOVE THE MOTOR BRACKET THAT HOLDS FAN TO COOLING TRAY (ON BC-3 TO 5 MODELS YOU WILL NEED TO OPEN UTILITY DOOR TO LOOSEN THE 4 THUMB SCREWS ON THE BOTTOM OF COOLING TRAY IN ORDER TO LIFT IT OFF TO GET TO THE BOLTS THAT HOLD THE FAN BRACKET IN PLACE)
2. ONCE COOLING TRAY IS REMOVED AND SET ASIDE YOU CAN USE A HEX KEY AND PLIERS TO REMOVE THE 4 BOLTS THAT HOLD THE FAN AND BRACKET TO BASE OF ROASTER AND COOLING TRAY
3. ONCE FAN AND BRACKET ARE REMOVED FROM BASE OF ROASTER YOU CAN REMOVE THE BRACKET FROM DEFECTIVE FAN.
4. DEPENDING ON THE WAY YOUR FAN IS SETUP (NEW 2021 FANS ARE SETUP POINTING UPWARD TO BLOW HEAT INTO THE EXHAUST PIPE) YOU MAY NEED TO READJUST THE SETUP ON FAN TO AIM UPWARD. TO DO THIS FIRST REMOVE THE SQUIRREL CAGE OF FAN TO GET TO THE BACK 4 BOLTS THAT HOLD THE SQUIRREL CAGE HOUSING SO IT CAN BE TURNED TO FACE DIRECTION THAT EXHAUST PIPE WAS SET ON ORIGINAL FAN (SEE IMAGES 4-5 ON THIS)

**SPECIAL NOTE ON WIRING:**

BEFORE DISCONNECTING WIRING BE SURE TO TAKE PICTURES SO YOU CAN USE EXISTING WIRE ON MACHINE TO ATTACH TO NEW FAN

2.



3.



4 & 5:



## BC-REPLACING COOLING TRAY FAN BC-2 to BC-5



5. ONCE YOU GET THE DIRECTION OF NEW FAN TO MATCH THE DIRECTION OF DEFECTIVE FAN THEN PUT THE SQUIRREL CAGE BACK INTO FAN AND MAKE SURE IT IS UP AND AWAY FROM THE BOTTOM OF HOUSING SO IT WILL NOT RUB WHEN ONE (GENERALLY YOU CAN MAKE THE TOP END OF SQUIRREL CAGE LEVEL WITH TOP OF THE FAN MOTOR SHAFT)

6. NEXT REATTACH THE BRACKET AND THEN ATTACH TO THE BODY OF ROASTER.

7. REATTACH THE WIRING TO THE NEW FAN. IF POSSIBLE USE THE EXISTING WIRE THAT CAME OUT OF ROASTER SO AS NOT TO NEED TO DO REWIRING INSIDE ROASTER. SEE PICTURES FOR HELP ON WIRING

INSIDE THE WIRE BOX YOU WILL LIKELY SEE THE BLACK WIRE ATTACHED TO THE RED AND GREEN WIRE IN FAN AND THE RED WIRE FROM ELECTRIC CORD ATTACHED TO BLACK AND BLUE WIRE IN FAN. **ALWAYS TAKE PICTURES OF WIRING IN CASE FAN FACTORY CHANGES COLORS OF WIRING**

IF YOU NEED FURTHER HELP PLEASE EMAIL:

[TECH@BUCKEYECOFFEE.COM](mailto:TECH@BUCKEYECOFFEE.COM)

Make sure to provide your account number with email to speed up help!