



Tri-County Community
Partnership Initiative

Advisory Board Program Update

July 23, 2019

Agenda

- ▶ Welcome and Opening Comments
- ▶ Program Update
 - Home Builders Institute
- ▶ Work Group Updates
 - Spotlight: Real Property, Eglin NexGen
- ▶ Women in Service
 - Women's Veteran Memorial
- ▶ Closing Comments
 - Way Ahead Schedule

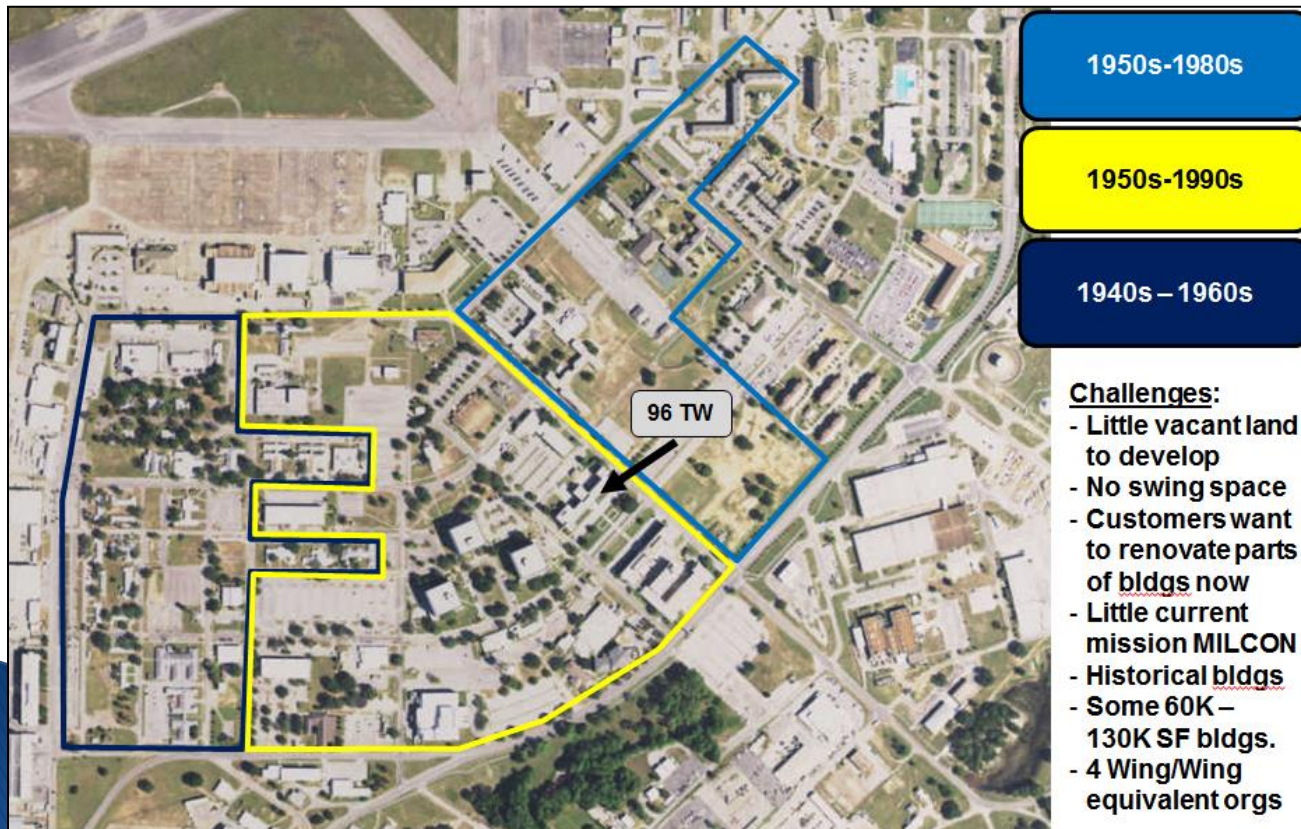


Program Update

- ▶ Home Builders Institute
 - Trades Training Program
 - Veterans and Transitioning Military Personnel
 - Partners
 - Building Industry Association
 - Economic Development Council
 - Eglin Air Force Base
 - Hurlburt Field
 - Northwest Florida State College
 - Site Renovations Underway

Real Property

- ▶ NexGen2 Redevelopment Plan
 - Col Schuliger, Commander 96TW CEG
 - A Strategic Plan to Transform



NexGen Eglin Vision:

Deliberately transform a mid-20th century installation into a revitalized 21st century NexGen installation enabling cutting-edge RDT&E programs and Team Eglin missions to produce war-winning capabilities for the warfighter.

Real Property



Co-Chairs: Nathan Sparks, Glenn Wagner

Partnership Activity	Status
<u>Bike Path</u> Okaloosa Island	<ul style="list-style-type: none">• Environmental safety issues• Studies?
<u>Eglin Space Deficit</u> Higher space demand than available; Deficit 250K sq ft 150K Admin (approx. 100K secure space) 50K storage/ 50K other (labs, technical, medical, etc) –Storage 22K IT/high value climate controlled 24K new mission growth/part of larger request	<ul style="list-style-type: none">• Eglin continuing to explore options
<u>Energy Center and Orphan Parcel</u> 15 Acres adjacent to UF REEF and MBBC parcel near 285	<ul style="list-style-type: none">• Preparing to move forward on one or both parcels
<u>Unsolicited Proposals</u> Work with civilian community to generate ideas for Eglin partnerships that involve real property	<ul style="list-style-type: none">• Destin Bridge beach – solution may be integrated with Island Multi-Use Path plan

Career Readiness Assistance

Co-Chairs: Terry Cowan, Janice Barnes, Angela Maberry

Partnership Activity	Status
<u>Career Skills Program – DoD SkillBridge</u> “Permissive TDY” to intern with community businesses for up to 6 months	<ul style="list-style-type: none"> Continuing to grow, over 45 local businesses formally enrolled, Recent Hiring successes.
<u>TAP Survey</u> 2,752 Respondents to date.	<ul style="list-style-type: none"> Work Group efforts continue to influence our Transitioning Service Members (TSM). A Full 44% indicate they plan to stay, with another 19% unsure at the time of survey.
<u>TAP Integration</u>	<ul style="list-style-type: none"> Eglin & Hurlburt Transition Assistance Program SMEs going to training, Aug-- learn about DoD changes to mandatory TAP processes VA Military LifeCycle Classes – local area VA Benefits office is best worldwide
<u>Events</u> Special Events with Partners to connect TSM to Community and Business	<ul style="list-style-type: none"> O2O now in local area Transition Process Flowchart to emphasize all mandatory (by law) and optional resources for transitioning personnel

Ecotourism & Environment

Co-Chairs: Alex Fogg, Chris Johansen, Lorraine Ketzler

Partnership Activity	Status
<u>Concrete to Reefs (C2R)</u>	<ul style="list-style-type: none">• Approximately 350 tons (and growing) of acceptable material has been identified.• Original right of entry has expired. New paperwork is being routed (County).• Coordinating with Eglin AFB to determine best methods of transport and deployment.• Identified new source of material at Fort Rucker (helicopter training payloads).
<u>Military Snorkel/Dive Park</u>	<ul style="list-style-type: none">• Final report distributed in coming months• Identifying sources of material. Meetings with Pensacola NAS and Eglin AFB have identified some options.

Ecotourism & Environment

Co-Chairs: Alex Fogg, Chris Johansen, Lorraine Ketzler

Partnership Activity	Status
<u>College Pond</u>	<p>Draft Bridge Hydraulic Recommendation Report For College Boulevard over College Pond, Okaloosa County</p> <p>Outline of three proposals:</p> <ul style="list-style-type: none">• Remove spillway, utilize existing box culvert only• Remove spillway, construct bridge to span bankfull width + 10% to accommodate Okaloosa Darter. This option would result in a 72-ft long single span bridge.• Remove spillway, construct bridge to span floodplain to accommodate Okaloosa Darter. This option results in a 340-ft long bridge. Maintain pond similar to the Anderson Branch restoration project while reconnecting Swift Creek to open channel flow. FWC ARHES is interested supporting this project.

Installation Resiliency

- ▶ Energy workgroup temporarily on hold for an holistic reformation in its focus and structure
- ▶ Consider expanding group to “Resiliency”
 - Still include Energy
- ▶ Military bases not an island
 - Utilities come from off-base
 - Majority of base workers live off-base
 - Support contractors have off-base resources
 - Base does not want to be a “light house” in the dark
- ▶ Threats to community and base
 - Utility Grid disturbance
 - Terrorism
 - Climate change
- ▶ Group offers opportunity to explore further

Transportation & Infrastructure

Co-Chairs: Jason Autrey, Tom Tolbert

Partnership Activity	Status
<u>Southwest Crestview Bypass</u> Congestion backing up to Duke Field and 7SFG(A) Western by-pass; I-10 interchange	<ul style="list-style-type: none">• Received bids for first portion of the widening – nearly \$15M in work should begin in September• Coordinating contract approvals and insurance• Triumph Gulf Coast term sheet for \$64.1M grant award moving forward• PJ Widening to Begin Summer 2019
<u>Hurricane Evacuation Routes</u>	<ul style="list-style-type: none">• Work Group requested to investigate
<u>Reclaimed Water Main</u> 10-mile main to service City of Niceville, lateral to service Eglin AFB, and wastewater treatment plant equipment to produce reclaimed water.	<ul style="list-style-type: none">• Design complete & permitting in progress• Seeking \$2.5M state appropriation to complete \$10.5M project• Easement survey finalized• Waiting on Eglin FMV appraisal; GSA estimates 60 days to go (contract awarded a week ago)

Childcare Facilities Task Force

Co-Chairs: Tami Gerstbrodie (Eglin), Sharon Brewer (Hurlburt), Renae Black (ELC)

Partnership Activity	Status
<u>Early Childhood Stakeholders</u>	<ul style="list-style-type: none"> Okaloosa/Santa Rosa Early Learning Coalition Members Department of Children & Families
<u>Quantify the Current Demand/Need</u> Military and Civilian Families	<ul style="list-style-type: none"> Long waits for infant care Summer depleted the Single/Dual Mil waiting time for 1–5 years
<u>Identify Current Local Group Care Facilities</u> Based on DoD requirements	<ul style="list-style-type: none"> Local military centers facing staffing challenges due to low local unemployment and high local wages; raised caregiver wages \$.50/hr 4 Off-Base Group Care Centers: Niceville:1 , Crestview:2 , Destin-1
<u>Recommendations Based on Findings</u>	<ul style="list-style-type: none"> Consider Family Child Care licensing with initial background check approvals with increased unannounced inspections to shorten licensing time.

Women in Service

- ▶ "Women in Service for America"
- ▶ Commissioner Carolyn Ketchel
 - ▶ A Veterans' Park to honor the contributions of the millions of women throughout American History who sacrificed much in order to aid in our country's war efforts



Closing Comments

► Way Ahead Schedule

- 28 Aug CPP
- 14 Sept WG
- 22 Oct AB

TCPI values the input of its Community Partners; please know we welcome your comments.

Nathan Sparks, TCPI Chair
850-362-6467
nathan@florida-edc.org



Mission: To function as the tri-county community partnership facilitator identifying and supporting public-private partnerships capable of sustaining military base missions.