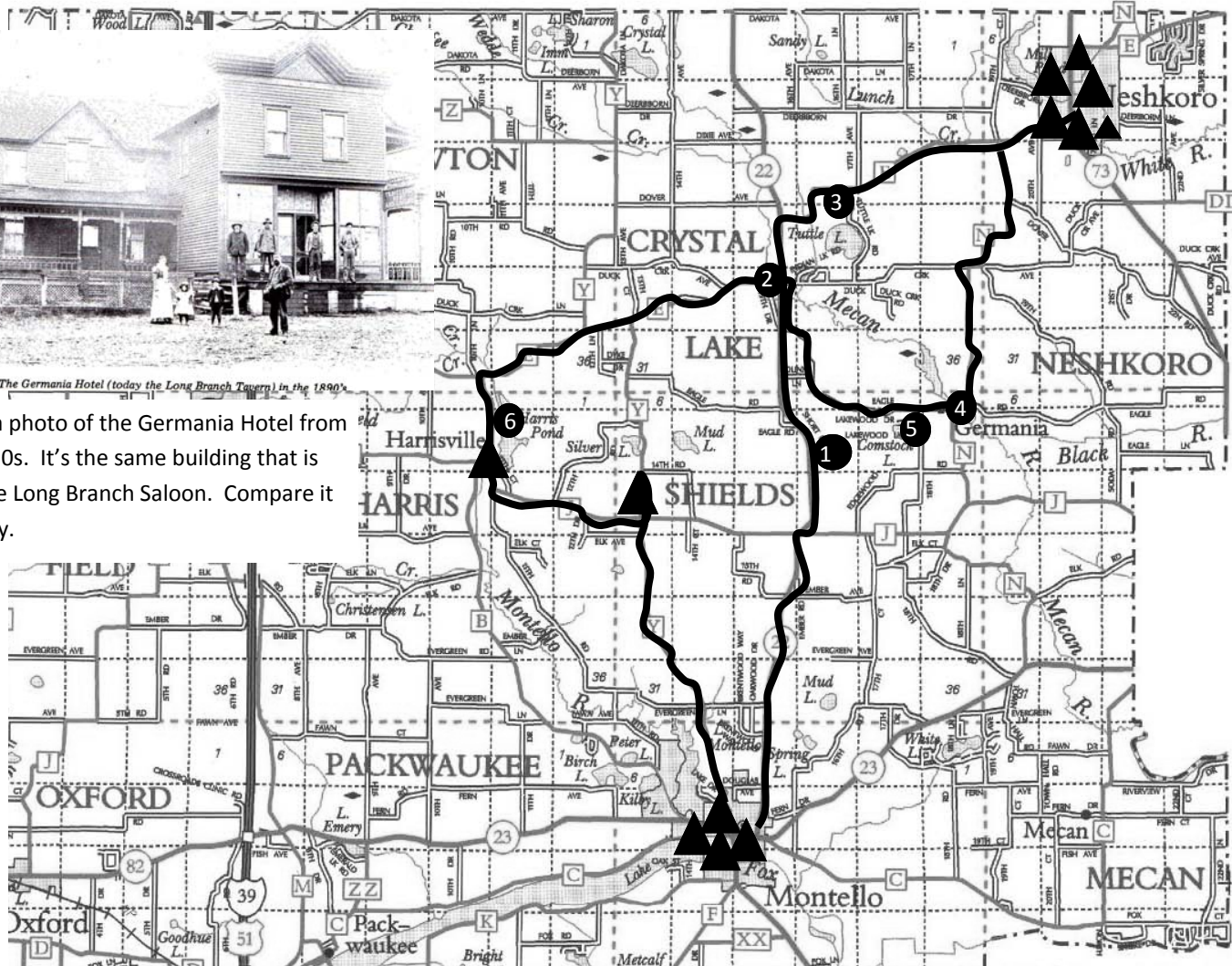


Howard and Betty Barn Quilt Tour # 1 (the rest you'll have to do on your own. There are many more murals and barn quilts in Marquette County).



The Germania Hotel (today the Long Branch Tavern) in the 1890's

This is a photo of the Germania Hotel from the 1890s. It's the same building that is now the Long Branch Saloon. Compare it to today.



1. Comstock Bog...early explorers walked over this floating mass of vegetation and wrote about the quivering earth beneath their feet. This is a State Natural Area and great for watching birds.
2. Budsin. This used to be a thriving community and includes a very historic Farmers Mutual Insurance Building...read about it in *Recipe for Community*.
3. Turtle Lake School. (the lake south of the school is now called Tuttle Lake) Children went to school here for many years. Where did you see another one-room school house?
4. Germania is a very interesting and historic place. It was founded by settlers from Germany who worked and worshipped together and formed the Germania Company and at first, all lived in a long house together, branching out to start businesses. One of the men from the Germania Company, helped start a mill in Montello. The Long Branch saloon is an old hotel and the building is over 120 years old. Many Native Americans lived here for thousands of years before the settlers came. There is a mill pond here from an old mill, an old church and school, and there are many areas to walk on DNR land here to watch birds and see nature.
5. Watch as we leave Germania. The lake that is down the road is Comstock Lake. You won't be able to see it, but it is the lake where the first settlers lived. They dug a home into the steep hill around the lake and lived there when they first arrived.
6. Another mill pond! Come back in summer and see the think wild rice beds that grow here. That's how Buffalo Lake would have looked before the settlers came here. Wild rice is a staple and sacred food for Native Americans.



Everything is connected!

Howard and Betty's Barn Quilt and Hidden History Mural Adventure



This big mural was painted by people who live in Neshkoro. A railroad once ran through Neshkoro along the road behind this building. Can you find the state bird (Robin) or the state flower (Violet) in the mural? How many different birds can you find? Name the butterflies and their host plants. How many flowering plants can you name? Do you know who “Old Abe” is? Can you find him in the mural? A hint – it has to do with the Civil War and you can find more information about this and other Wisconsin History on the Wisconsin Historical Society’s website: wisconsinhistory.org.

Neshkoro Village President Bill Warmbier is meeting us here.



Neshkoro was chosen by the Wisconsin Arts Board, to host an Artist and Community Collaboration Project. The community put together this friendship quilt and the blocks around the center hung on the streetlights for a summer. The blocks were painted in partnership with the Neshkoro Healthy Youth Healthy Community youth group, the Neshkoro Senior Center, local businesses, church organizations and members of local civic groups. Can you see all the similar groups/organizations that Montello also has? The center is the old mill which was moved to Neshkoro in 1909 from Shawano. The mill pond is made from the dammed up White River. What other communities have mill ponds?



This on the Neshkoro Library. The pattern is taken from a historic quilt made by a Neshkoro citizen Agnes Scobie who is no longer living. Her father left Scotland in 1852 and settled in Neshkoro. They were in the ship on the ocean for 60 days with their eight children. What other family did you learn about who came from Scotland and settled in Marquette County? Agnes' brother built the woolen mill that once ran in Neshkoro and another son manufactured plows here. The center of the painting shows the old mill and the gazebo. In summer, there are outdoor concerts in the gazebo on Friday nights...for free.



In 1908 the July 4th celebration in Neshkoro included a man who walked on a tight rope over the White River. The White River is dammed just like the Montello River. The dam on the White River is what forms the Neshkoro Mill Pond. There is an old mill at the dam and farther down the river there is a power plant that generates electricity. North American Hydro has its offices next to the old mill in Neshkoro. That is the company that also generates electricity at the dam in Montello. Everything is connected!!!



Neshkoro once had a big brick school like the one you saw that still stands in Montello.



These murals are in Neshkoro's Veteran's Memorial Park. There are many Veteran's memorials around Marquette County and some of them have murals like the one in Westfield. Howard and Betty will take you to some other Veteran's Memorials this year. One of these murals was sponsored by the Veterans of Foreign Wars (VFW) and one by the American Legion, both Veterans' organizations.



The artist who painted this mural is Camella Sell. Camella lives in Montello and painted the mural in downtown Montello, too. You'll see that today, too. She is a wildlife artist. This mural shows all the activities that people do around the mill pond in Neshkoro including ice fishing, fishing, celebrating Fourth of July, and watching wildlife.



This mural was painted by Ottella Brantmier, another Marquette County artist. It is on the side of the Reetz' Meats building, which has been serving the little mill town of Neshkoro for generations. The present owner still smokes sausage and hand cuts steaks as well as makes his own sauerkraut each fall, which he sells in the old time grocery store. His skin-on weiners are some of the best around.



Included on the historic mural in Harrisville are a silhouette of a Native American, the grist mill (on the Montello River, also called the Crooked River and Westfield Creek. What other mills were on this river?), Lutheran Church, Frank store, the school that still stands, the hotel, electric power plant, a pickle field, Laing's blacksmith shop and garage, the Blue Eagle, J&B Schultz' Cozy Corner Café, Harris Villa Lithuanian Resort, Bratfest, the old fire house and EMS, Lakeside Implements, and the new Harris Villa Assisted Living home. There is a lot of history in Harrisville like all the communities in Marquette County. Harrisville has a Fire Department, an electric power plant, a mill pond, and used to have a school, blacksmith shop and many other businesses.



This barn quilt is on the Borzick Dairy Farm. Those are Brown Swiss cows in front of the barn and quilt block. Dairy farming, like other farming, is very important in Marquette County.

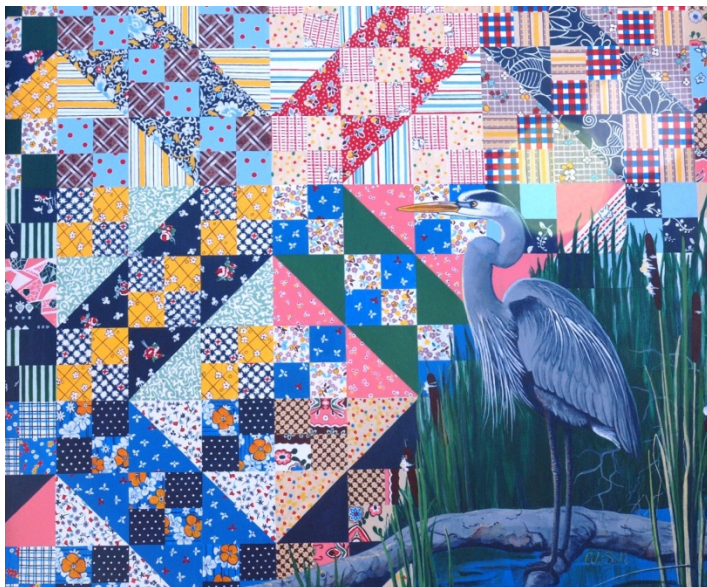


There are quilts and murals tucked away all around Marquette County. This one is on the Bayview Resort and Motel on Montello Lake. Right where the motel sits used to be a big home of E.W. Underwood. Mr. Underwood farmed this land and the land across the road. He grew vegetables and fruit and harvested cranberries out of the bay on Montello Lake that you can see from the motel. When the water is down in the lake, you can still see the walls he used to hold the water in or out of his cranberry beds depending on the time of season. That's a photo of Mr. Underwood below and some of the vegetables he grew on his farm.





Do you recognize these quilts on Vaughn Hall in Montello? The top one shows the granite quarry and J. P. Vaughn, the blacksmith who built Vaughn Hall. The bottom one has Montello quilt blocks on the sides and the top of it represents the stage curtain upstairs in Vaughn Hall.



Camela Sell, Montello wildlife artist, has faithfully reproduced the beautiful Jacob's Ladder quilt made in 1930, and painted a lifelike blue heron on it to show the beautiful birds that live in Marquette County. The quilt was made by Mary Benarek Roidt, who lived from 1875 to 1941. Mary grew up near Miladore and married Thomas Roidt. They lived on a farm south of Montello on Highway 22. The quilt is now owned by Jean Roidt, Montello.