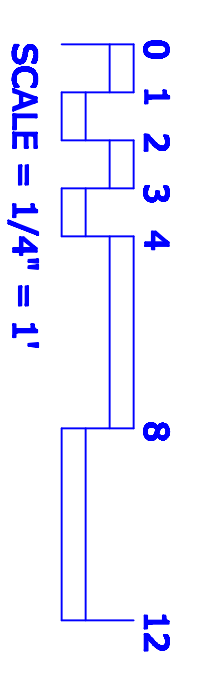
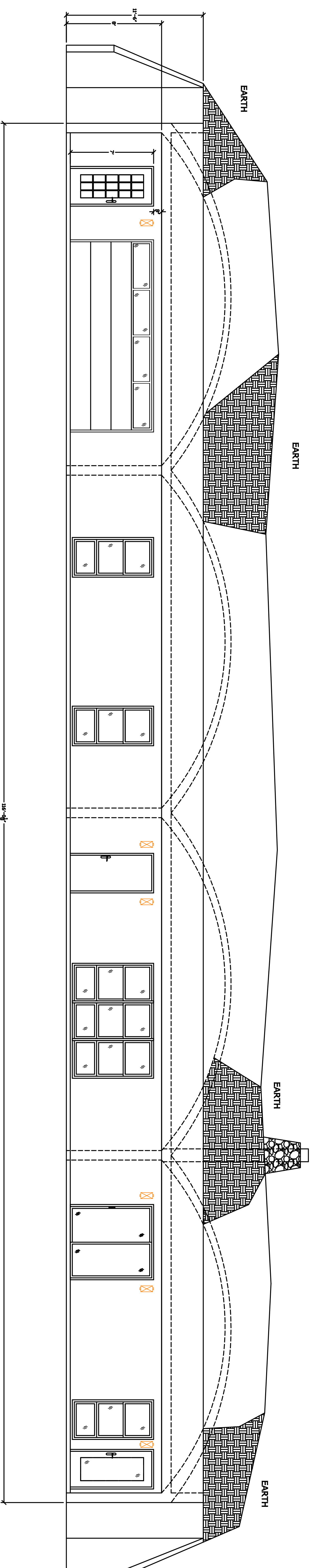


ELEVATION



- GENERAL NOTES: ELEVATIONS**
1. ALL WINDOW OPENINGS MUST COMPLY WITH SEC. 1707 OF THE UNIFORM BUILDING CODE.
 2. ALL EXTERIOR DOORS ARE SOLID CORE WITH DOUBLE GLAZE WINDOW-TEMPERED GLASS.



NOTE:
REFER TO DIMENSION
LINE FOR LOCATION
OF DOORS & WINDOWS

General Notes

CONTACTS:
PHONE:
CELL:

NO.	REVISIONS	DATE

**EARTHLOG,
EQUITY GROUP,
INC.**
P.O. BOX 53353
KNOXVILLE, TN 37950-3353

05-22-2016
1/4"=1'-0"
A1