



KLETON

LUXOR | H. WILSON

VELCRO®

MADE IN TACOMA
SINCE 1911
Rite in the Rain
— DEIFYING MOTHER NATURE —

M
MARATHON

Quartet®
great ideas start here



OFFICE PRODUCTS



| | |
|--|--------------------------|
| Seating | 1564 - 1575 |
| Tables | 1576 - 1577 |
| Computer Supplies | 1578 - 1582 |
| Safes..... | 1583 |
| Filing & Storage Systems | 1584 - 1589 |
| General Office Supplies | 1590 - 1591, 1600 - 1608 |
| Key Cabinets & Key Chains..... | 1592 - 1593 |
| Clocks..... | 1594 - 1595 |
| All-Weather Notebooks & Accessories..... | 1596 - 1597 |
| VELCRO® | 1598 - 1599 |
| Office Lighting..... | 1607 |
| Cafeteria Supplies | 1609 - 1611 |
| Water Coolers | 1612 - 1613 |





THE OFFICE CHAIR

ONE OF THE MOST IMPORTANT COMPONENTS OF A PROPER WORKSTATION IS THE OFFICE CHAIR!

The type of work being performed in the office often dictates what kind of chair is required. The size of the person doing the work might also affect the proper choice. This guideline is intended for most users, but accommodating the extremes in a person's height, weight, physical disability, etc., is a fact of life and must be part of the planning process.



- The chair should have a seat back with lumbar support capable of both up-and-down and front-and-back adjustment. The seat back should provide support to both the lower back and the shoulders and enable the person to sit comfortably upright without slouching
- To accommodate the height of the user, the chair height with respect to the floor should be adjustable
- The seat pan should be capable of tilting and it should have a contoured or waterfall front
- Hip angle: 90°-120°
- Knee angle: 90°-130°
- Ankle angle: 100°-120°
- The front edge of the seat should curve away and down from the back of the person's legs to promote circulation in the lower legs. Tilting transfers weight from your hips to your legs, encouraging normal back curve and reducing pressure on the discs in the lower spine
- The seat pan and backrest should be upholstered and cloth covered with a fabric that is breathable. Seat padding should not compress more than one inch when an individual is seated
- The height of the armrests needs to be adjustable with respect to the seat pan. Adjustable height arm rests relieve tension in the upper back, neck, and shoulders, by allowing the user's arms and wrists to be in parallel position. They also provide resting planes
- To accommodate the breadth of the user's lower torso, the office chair armrests should be capable of in and out adjustment and that adjustment needs to be independent of the seat pan
- The chair should be capable of swiveling at least 360°
- To prevent the possibility of tipping, the chair should have five casters. The type of casters depends on the flooring material. Use hard casters for carpeted floors. Use soft casters for hard wood vinyl or when used on chair mats
- Look for chairs with a built-in tilt tension mechanism that controls the rate and ease with which the chair reclines to different weights and strengths of the user. This allows the user freedom to rock/shift in the chair, while not disturbing the original ergonomic settings

1405 & 1410 PREMIUM SERIES CHAIRS

Offers all you require in a task and operator chair. From molded foam cushions to "one touch" ergonomic chair controls.

- Gas lift height adjustment
- Back height and depth adjustment
- Seat and back angle adjustment on 1410 Series
- Optional arms and stool kit available
- Dual wheel carpet casters

Black onyx



Charcoal



HORIZON SEATING

| Model No. | | Description | Adjustable Height" | Seat Dimensions W" x D" | Backrest Dimensions W" x H" | Overall Dimensions W" x D" x H" | Price /Each |
|------------|----------|------------------------------|--------------------|-------------------------|-----------------------------|---------------------------------|-------------|
| Black Onyx | Charcoal | | | | | | |
| OE744 | OE745 | 1405 Series chair | 32-36 3/4 | 17 1/2 x 18 | 16 1/2 x 14 | 18 1/2 x 22 x 36 3/4 | |
| OE746 | OE747 | 1405 Series w/stool kit | 39 1/2-44 1/4 | 17 1/2 x 17 | 16 1/2 x 14 | 23 1/2 x 22 x 44 1/4 | |
| OE748 | OE749 | 1410 Series multi functional | 33-38 1/2 | 19 x 18 1/2 | 17 1/2 x 15 | 24 1/2 x 23 1/2 x 38 1/2 | |



OE744



OE748

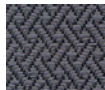
TASK CHAIRS & ECONOMICAL STENO CHAIRS

- Pneumatic height adjustments
- Backrest height adjustments
- Five prong nylon base
- Dual wheel carpet casters
- Stool kit available
- Optional arms
- Optional glides (recommended with stool kit)

Black onyx



Charcoal



HORIZON SEATING

| Model No. | | Description | Adjustable Height" | Seat Dimensions W" x D" | Backrest Dimensions W" x H" | Overall Dimensions W" x D" x H" | Wt. lbs. | Price /Each |
|-------------------------|----------|-------------|--------------------|-------------------------|-----------------------------|---------------------------------|----------|-------------|
| Black Onyx | Charcoal | | | | | | | |
| ECONOMICAL STENO CHAIRS | | | | | | | | |
| OC310 | OC309 | w/o arms | 28 1/2-36 | 18 x 17 | 16 1/2 x 11 1/2 | 20 1/4 x 23 x 36 | 30 | |
| OC312 | - | w/T-arms | 28 1/2-36 | 18 x 17 | 16 1/2 x 11 1/2 | 25 1/4 x 23 x 36 | 32 | |
| OE093 | OE092 | w/stool kit | 36 - 41 | 18 x 17 | 16 1/2 x 11 1/2 | 20 1/4 x 23 x 41 | 35 | |
| TASK CHAIRS | | | | | | | | |
| OE095 | OE094 | w/stool kit | 40-45 1/2 | 19 x 18 1/2 | 17 1/2 x 15 | 23 1/2 x 22 x 45 1/2 | 35 | |



OC312



OE095

OPTIONS FOR CHAIRS



Model No. OA271
Price/Each \$
Loop Arm Kit
(width adjustable)



Model No. OC323
Price/Each \$
T-Arm Kit (width and height adjustable)



Model No. OA269
Price/Each \$
Stool Kit

IBEX MULTI-TILT ARM CHAIRS

- Ergonomic features include adjustable arm height, seat angle and seat height
- Comfortable air-flow mesh back
- Seat height: 17.5" to 21.5"
- Caster type: Dual wheel carpet casters
- Weight capacity: 300 lbs.
- Overall dimensions: 26" W x 27" D x 39.5" H



global

| Model No. | Description | Price /Each |
|-----------|------------------|-------------|
| OP299 | Black, Fabric | |
| OP300 | Charcoal, Fabric | |
| OP301 | Black, Vinyl | |
| OP302 | Charcoal, Vinyl | |



OP300



OP302

SERENITY™ BIG & TALL LEATHER SEATING

- Designed especially for the big and tall person
- 500-lb. capacity
- Pneumatic seat height adjustment (measured from floor to top of seat): 19 1/2"-22 1/2" H
- Seat: 21 1/2" W x 22" D
- 360° swivel
- Tilt tension
- Back tilt lock
- 2 1/2" dual wheel carpet casters
- Black leather



SAFCO

| Model No. | Description | Seat Dimensions W" x D" x H" | Back Dimensions W" x H" | Price /Each |
|-----------|-------------------------|---------------------------------|----------------------------|-------------|
| ON715 | High-back leather chair | 26 x 26 x 45 1/2 - 48 1/2 | 22 x 26 | |
| ON716 | Mid-back leather chair | 26 x 26 x 42 1/2 - 48 1/2 | 22 x 23 | |



ON715



ON716

IBEX TASK CHAIRS

- Ergonomic features include adjustable arm height, seat height and seat depth
- Comfortable air-flow mesh back
- Seat height: 16" to 20"
- Caster type: Dual wheel carpet casters
- Weight capacity: 300 lbs.
- Overall dimensions: 26" W x 26.5" D x 37" H



global

| Model No. | Description | Price /Each |
|-----------|------------------|-------------|
| OP288 | Black, Fabric | |
| OP303 | Charcoal, Fabric | |
| OP289 | Black, Vinyl | |
| OP304 | Charcoal, Vinyl | |



OP288



OP304

OBUSFORME® CHAIR

- Heavy duty 24 hour model
- Ergonomic "S" shape backrest offers continuous support and helps reduce back strain
- multi-tilter mechanism
- Tension, tilt movement, seat height, back height, seat depth, seat angle, back angle height, arms height and width are all adjustable
- Includes carpet casters
- Base Diameter: 26-1/2"
- Adjustable Seat Height: 16-1/2" to 20-1/2"
- Seat Width: 21"
- Adjustable Seat Depth: 17-1/2" to 20"
- Weight Capacity: 300 lbs.
- Colour: Black



global

| Model No. | Overall Dimensions W" x D" x H" | Description | Material | Backrest Height" | Price /Each |
|-----------|------------------------------------|---------------------|-----------|------------------|-------------|
| OP928 | 25 x 26 x 48 | High Back Comfort | Polyester | 27 to 32-1/5 | |
| OP929 | 25 x 26 x 48 | High Back Comfort | Leather | 27 to 32-1/5 | |
| OP930 | 25 x 26 x 44 | Medium Back Comfort | Polyester | 22 to 27-1/5 | |



OP928



OP929

SEATING

ACTIV™ A-47 SYNCHRO OFFICE CHAIR

- Adjustable Height: 18" to 22.75"
- Seat Width: 19.5"
- Seat Depth: 19.5"
- Backrest Height: 24"
- Backrest Width: 18.25"
- Overall Dimensions: 25" W x 26-1/2" D x 45" H
- Weight Capacity: 250 lbs.
- Pneumatic seat height is easily adjustable
- Offers lumbar support
- Tilt-tension adjustment
- Height adjustable armrests
- Contoured foam seat cushion
- Material: Fabric
- Colour: Black

Model No. OP795
Price/Each \$



ACTIV® A-43 MID-BACK MESH-CHAIRS

- Tilt mechanism with lockout feature and tension adjustment
- Height and depth adjustable lumbar support
- Optional height and tilt adjustable headrest
- Adjustable height: 39 1/2" to 42 1/2"
- Back: 22" H x 19 1/2" W
- Seat: 19 1/2" W x 19 1/2" D
- Chair overall dimensions: 25 3/4" W x 23" D x 42 1/2" H
- Height and width adjustable armrests
- Fabric: Standard black
- Black base and gas cylinder
- Custom upholstery available

| Model No. | Description | Price /Each |
|-----------|---------------------|-------------|
| OK208 | Mid back mesh-chair | |
| ON573 | Head rest | |



ACTIV™ A-128 OFFICE CHAIR

- Adjustable Height: 18" to 21"
- Seat Width: 20.5"
- Seat Depth: 20"
- Backrest Height: 26.5"
- Backrest Width: 20"
- Overall Dimensions: 25-3/4" W x 25" D x 44-3/4" H
- Weight Capacity: 250 lbs.
- Ergonomic built-in lumbar support allows increased relaxation of the back
- Pneumatic seat height is easily adjustable
- Tilt-tension adjustment
- Fixed style loop armrests
- Standard carpet casters are included
- Material: Polyurethane
- Colour: Black

Model No. OP796
Price/Each \$



ACTIV® A-618 LEATHER MANAGER'S CHAIRS

- Thick padded and contoured seat and back for superior comfort
- Seat: 21 3/4" W x 21" D
- Backrest: 24" H x 21 1/2" W
- Overall dimensions: 25 1/4" W x 21 1/2" D x 46" H
- Back features built-in lumbar support which allows increased relaxation of the back
- Contoured armrests for increased support
- Pneumatic seat height adjustment from 43" to 46"
- A tilt mechanism with lockout
- Tension adjustment
- Contoured backrest shaped to fit the contours of the body
- Soft-touch leather like fabric

Model No. OK390
Price/Each \$



ACTIV® A-37 MESH OFFICE CHAIRS

- Contoured backrest with adjustable lumbar support
- Breathable mesh fabric on backrest
- Injection molded foam seat
- Pneumatic seat height adjustment, 17.5 - 21"
- Comfortable and durable armrests with height, pivot and telescopic adjustments
- Advanced synchro-tilt mechanism with multiple locking positions
- Tilt-tension adjustment
- Sliding seat adjusts and locks in various positions to suit a wide variety of users
- Seat: 19" W x 20" D
- Weight capacity: 250 lbs.
- Material: Mesh/fabric

LOW BACK

- Adjustable height: 39 1/2" to 43"
- Backrest: 22" H x 18" W
- Overall dimensions: 25 3/4" W x 24" D x 43" H

HIGH BACK

- Height adjustable headrest
- Adjustable height: 46 1/2" to 51 1/2"
- Backrest: 29" H x 18" W
- Overall dimensions: 25 3/4" W x 24" D x 51 1/2" H



| Model No. | Seat Colour | Price /Each |
|-----------|-------------|-------------|
| LOW BACK | | |
| OP264 | Black | |

| Model No. | Seat Colour | Price /Each |
|-----------|-------------|-------------|
| HIGH BACK | | |
| OP267 | Black | |



ACTIV™ SERIES A-601 OFFICE CHAIR

- Easily adjustable seat height and tilt-tension control
- Includes fixed padded loop armrests and carpet casters
- High back
- Leather-like fabric
- Colour: Black
- Adjustable Seat Height: 18" to 21"
- Back height: 25.5"
- Seat Depth: 18.25"
- Seat Width: 19"
- Overall Dimensions: 24-1/2" W x 24" D x 46-1/2" H
- Weight Capacity: 250 lbs.

Model No. OP806
Price/Each \$



DEFY™ CHAIR

- Heavy-duty high back chair
- Tension, tilt lock, and seat height are all adjustable
- Steel spider base
- Pneumatic seat height adjustment
- Adjustable Seat Height: 19-1/2" to 23-1/2"
- Upholstery: Luxhide bonded leather
- Weight Capacity: 350 lbs.
- Overall Dimensions: 28" W x 26" D x 43" H
- Dual wheel carpet casters included

Model No. OP927
Price/Each \$



VUE™ ERGONOMIC STOOL

- High density seat and backrest cushions
- Ergonomic and height-adjustable seat that helps prevent fatigue
- Height Range: 39-1/2" to 49-1/2"
- Adjustable backrest and footrest
- Backrest Dimensions: 17" W x 15-1/2" H
- Backrest Material: Mesh
- Seat Dimensions: 18" W x 17-1/2" D
- Dual 2" wheel carpet casters
- Seat: 20" W x 19" D
- Overall dimensions: 25" W x 25" D x 49-1/2" H
- Weight Capacity: 250 lbs.
- Optional loop arms sold separately



OP689

SAFCOACTIVE



| Model No. | Description | Price /Each |
|-----------|---------------------|-------------|
| OP688 | Black, Polyester | |
| OP689 | Black, Vinyl | |
| OP690 | Loops arms for Vue™ | |



OP690

CIERRA™ ERGONOMIC CHAIRS

- High density seat and backrest cushions
- Pneumatic, soft descent seat height adjustment, 19 - 23.75"
- Backrest height adjustment
- Independent, infinite position back and seat angle adjustment with tilt lock control
- Tilt-tension adjustment
- Forward seat tilt-lock control
- Seat depth adjustment (seat slider)
- Height adjustable T arms with soft urethane flat arm pad
- Seat: 20" W x 19" D
- Backrest: 24" H x 19" W
- Weight capacity: 250 lbs.
- Overall dimensions: 20" W x 19" D x 46-1/2" H



OP254



HORIZON SEATING

| Model No. | Description | Price /Each |
|-----------|---------------|-------------|
| OP253 | Black, Fabric | |
| OP254 | Blue, Fabric | |
| OP255 | Grey, Fabric | |

VUE™ HEAVY-DUTY STOOL

- Big & tall heavy-duty stool
- Swivel tilt mechanism accommodates users of all sizes
- Mesh back with ample support and ergonomic shaping
- Adjustable backrest and footrest
- Height Range: 39" to 48-1/2"
- Backrest Dimensions: 13-3/4" W x 18" H
- Seat Dimensions: 20-1/2" W x 20" D
- Dual 2-1/2" wheel carpet casters
- Overall dimensions: 26" W x 26" D x 48-1/2" H
- Weight Capacity: 350 lbs.
- Optional T-pad height and width adjustable arms



SAFCOACTIVE

| Model No. | Description | Price /Each |
|-----------|---------------|-------------|
| OP686 | Black, Nylon | |
| OP687 | Black, Vinyl | |
| ON713 | T-pad arm kit | |



ON713



OP686

METRO™ EXTENDED-HIGH CHAIR

- Swivel mechanism with adjustable back tilt tension accommodates users of all sizes
- Height Range: 29" to 39"
- Backrest Dimensions: 17-1/2" W x 16" H
- Seat Dimensions: 18-1/4" W x 17" D
- Overall dimensions: 26" W x 26" D x 49" H
- Weight Capacity: 250 lbs.
- Dual 2-1/2" wheel hooded carpet casters
- Optional adjustable arms sold separately

OP954



OP692

| Model No. | Description | Price /Each |
|-----------|------------------|-------------|
| OP692 | Black, Fabric | |
| OP693 | Black, Vinyl | |
| OP954 | Adj. Height Arms | |



SAFCOACTIVE

LEATHER CHAIRS

- High back tilter with pneumatic seat height adjustment from 16" to 20"
- Upright position tilt lock with tension control knob
- Dual wheel carpet casters for easy movement on carpet
- Black leather seat with mock leather back and trim
- Ideal for home or office
- Dimensions: 25 1/2" W x 28" D x 43" H

Model No. OK049

Price/Each \$

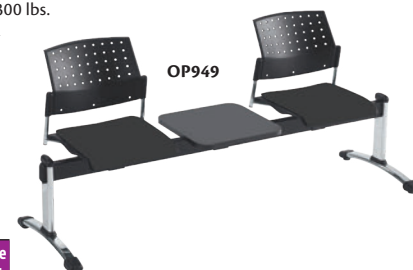


SONIC BEAM COLLABORATIVE SEATING

- Efficient seating solution for public spaces or reception areas
- Features two armless seats and one table
- Table top and seating units can be placed in any order along the beam
- Frame Finish: Chrome with black laminates
- Weight Capacity: 300 lbs.
- Overall dimensions: 24" W x 74" D x 16" H
- Material: Polypropylene
- Each seat has a weight capacity of 300 lbs.
- Includes all mounting brackets and hardware required for assembly
- Greenguard Certified



| Model No. | Colour | Price /Each |
|-----------|------------|-------------|
| OP949 | Black | |
| OP950 | Black/Blue | |



OP949

SIX 31 OPERATOR CHAIR

- Tension, tilt lock, seat height, back height, back angle, and arms height are all adjustable
- Durable "T" style arms
- Pneumatic seat height adjustment
- Adjustable Seat Height: 18-1/2" to 22-1/2"
- Material: Fabric
- Colour: Black
- Overall dimensions: 25-1/2" W x 25" D x 44" H
- Weight Capacity: 250 lbs.
- Dual wheel carpet casters included

Model No. OP926

Price/Each \$



SEATING

ZENERGY™ BALL CHAIR

- Applications: Office, conference room or gathering area
- Anti-burst exercise ball with legs to create a unique ball chair
- Great alternative to a desk chair
- Supports movement and promotes a better posture
- Four powder coated legs and stationary glides for stability and durability
- Pump included
- Weight Capacity: 250 lbs.
- Overall dimensions: 22-1/2" W x 22-1/2" D x 23" H



OP695



OP696

SAFCOACTIVE

| Model No. | Description | Price /Each |
|-----------|---------------|-------------|
| OP694 | Black, Fabric | |
| OP695 | Red, Fabric | |
| OP696 | Black, Vinyl | |

ZENERGY™ SWIVEL BALL CHAIR

- Applications: Office, conference room or gathering area
- Anti-burst exercise ball covered in mesh
- Great alternative to a desk chair
- Supports movement and promotes a better posture
- Rubber base prevents the chair from slipping
- Pump included
- Weight Capacity: 250 lbs.
- Overall dimensions: 17-1/2" W x 17-1/2" D x 23" H



OP698



OP699

SAFCOACTIVE

| Model No. | Description | Price /Each |
|-----------|---------------|-------------|
| OP697 | Black, Fabric | |
| OP698 | Blue, Fabric | |
| OP699 | Black, Vinyl | |

TWIXT™ ERGONOMIC CHAIR

- Height Range: 17" to 22"
- Flexible ring under base allows the user to adjust sitting angle
- Adjustable height to fit a variety of users and work surfaces
- Designed to help support better posture and balance
- Upholstered seat with 360° swivel
- Weight Capacity: 250 lbs.
- Height Adjustment: Adjustable
- Type: Swivel
- Overall dimensions: 15-1/2" W x 15-1/2" D x 22" H



SAFCOACTIVE

| Model No. | Description | Price /Each |
|-----------|---------------|-------------|
| OP666 | Black, Fabric | |
| OP667 | Red, Fabric | |
| OP668 | Black, Vinyl | |



OP667



OP668

PIVOT SEAT

- Height Range: 26" to 35-1/2"
- Seat Size: 16" W x 11-1/2" D
- Supports leaning posture and promotes a better posture
- The weighted base support multidirectional use
- Works with any standing desk or table
- Accommodates user heights between 4'11" and 6'8"
- Weight Capacity: 300 lbs.
- Height Adjustment: Adjustable
- Type: Sit/Stand
- Overall dimensions: 13-1/2" W x 16" D x 35-1/2" H



SAFCOACTIVE

| Model No. | Description | Price /Each |
|-----------|---------------|-------------|
| OP717 | Black, Vinyl | |
| OP718 | Blue, Vinyl | |
| OP719 | Yellow, Vinyl | |
| OP720 | Red, Vinyl | |



OP719



OP720



LOCUS™ LEANING SEAT

- Overall Depth: 37" to 45"
- Height Range: 31" to 41"
- Seat Size: 16" W x 10-1/2" D
- Supports leaning posture and promotes a better posture and relaxed spine
- Designed with wheels for easy portability
- Post folds for easy storage
- Anti-fatigue mat helps relieve stress on lower body
- Works with any standing desk or table
- Weight Capacity: 300 lbs.
- Overall dimensions: 25-1/2" W x 45" D x 41" H



SAFCOACTIVE

| Model No. | Description | Price /Each |
|-----------|---------------|-------------|
| OP713 | Black, Vinyl | |
| OP714 | Yellow, Vinyl | |
| OP716 | Red, Vinyl | |



OP713



OP716

MOBIS® STOOL

- Height Range: 28-1/2" to 37-3/4"
- Seat Size: 16" W x 11-1/2" D
- Supports leaning posture and promotes a better posture
- Ellipse-shaped base with non-slip rim provides stability for an active posture
- Works with any standing desk or table
- Simple two-step assembly
- Weight Capacity: 300 lbs.
- Height Adjustment: Adjustable
- Type: Sit/Stand
- Overall dimensions: 16" W x 15" D x 35" H



SAFCOACTIVE

| Model No. | Description | Price /Each |
|-----------|---------------|-------------|
| OP709 | Black, Vinyl | |
| OP710 | Red, Vinyl | |
| OP711 | Yellow, Vinyl | |
| OP712 | Blue, Vinyl | |



OP710



OP712

SWIVEL STOOLS

- Seats made of 19-gauge embossed steel with 1/8" tempered hardboard inlay
- 1" diameter, 16-gauge steel frame all-welded tubing
- Circular 18-gauge footrest guarantees comfort and stability
- Heavy-duty rubber cushioned steel glides protect floors
- 1" x 14 1/2" long steel adjustment stem for easy height selection on all units
- Models **FC661** and **FC665** have 9 1/2" x 15 3/4" 4-way adjustable backrest
- Optional casters available: **FC675**
- Models **FC673** and **FC674** come with a padded seat



FC658



FC661



FC665



FC673



| Model No. | Adjustable Height" | Seat Dimensions" | Price /Each |
|-----------|--------------------|------------------|-------------|
| FC658 | 22-28 | 14 | |
| FC661 | 22-28 | 14 | |
| FC665 | 17-23 | 14 1/2 x 15 | |
| FC673 | 20-26 | 14 | |
| FC674 | 25-31 | 14 | |
| FC675 | Set of 4 casters | - | |



DELUXE SWIVEL STOOLS



- These padded stools will provide workers with maximum comfort and support
- 360° swivel motion is ideal for workers who have repetitive side to side movement
- Seat easily adjusts to your selected height, just raise or lower the steel rod and lock securely in place
- 2" foam over a 1/2" plywood base and 1/2" foamed backrest
- All-welded frame constructed of 1" diameter 16-gauge steel
- 3/4" circular tube footrest
- Four leg cluster design has a 22" spread giving them optimum stability
- Black vinyl upholstery with a royal grey frame
- Optional casters available

Model **OJ905** has an ergonomic self-skinned molded polyurethane foam seat and back, features lumbar support, waterfall seat and 4-leg frame for superior comfort and durability.



FC670



OJ905



| Model No. | Adjustable Height" | Seat Dimensions" | Price /Each |
|-----------|--------------------|------------------|-------------|
| OJ905 | 25-31 | 19 x 17 | |
| FC670 | 25-31 | 19 x 17 | |
| FC675 | Set of 4 casters | - | |

STEEL BASE SWIVEL STOOLS

- 5" pneumatic lift of 25" to 30", for easy height adjustment
- Five legs and an all-welded steel base, gives optimum stability
- 16-gauge, 1" diameter steel legs
- Full 360° rotation
- Colour: Powder coated black Santex
- Optional casters are available



OJ974



OJ975

| Model No. | Upholstery Seat | Dimensions" | Price /Each |
|-----------|---|-------------|-------------|
| OJ973 | Vinyl and foam-padded seat and back | 19 x 17 | |
| OJ974 | Polyurethane seat and back | 18 x 17 | |
| OJ975 | Premium self skinned polyurethane seat and back | 19 x 18 | |
| OJ976 | Optional set of 5 tile casters (includes leg insert socket) | | |

POLYPROPYLENE SWIVEL STOOLS

- 360° swivel
- Constructed of 1" diameter 16-gauge tubular steel base
- 17" x 16 1/2" sturdy polypropylene seat
- **OA241** comes with a 4-leg base and manual height control from 22" to 28" – simply raise or lower the steel rod and lock securely into place
- **ON563/ON564** comes with a 5-leg glass reinforced nylon base and nylon foot ring
- **ON563/ON564** features pneumatic height control from 21" to 28"



| Model No. | Description | Price /Each |
|-----------|-------------------------|-------------|
| OA241 | 4-leg base with glides | |
| ON563 | 5-leg base with glides | |
| ON564 | 5-leg base with casters | |



OA241



ON564

INDUSTRIAL SEATING

- Features a full 8" of pneumatic lift while seated
- Exclusive extension tube provides an adjustable height range of 17" to 35"
- Seats and backs are microcellular self skinning polyurethane foam which inhibits punctures, tears and moisture absorption
- Large 26" dia. five leg steel base with 2 1/2" diameter glides ensure stability and safety even at the highest levels
- Large wide angle footrests make it easy to step up into seat



FC680

Features 22" back angle and 10" seat tilt adjustment w/double paddle handles.



FC681

Features 3" back rest height and 3" back rest depth adjustment. Assembly required.



| Model No. | Seat" | Dimensions Backrest" | No. of Footrests | Price /Each |
|-----------|-----------------|----------------------|------------------|-------------|
| FC680 | 18 1/2 x 17 | 15 3/4 x 9 | 3 | |
| FC681 | 16 1/4 x 16 1/4 | 14 1/2 x 9 | 1 | |

STATIONARY & ADJUSTABLE HEIGHT STOOLS

- Ruggedly built for long lasting service in a warehouse factory or office
- All-welded frame is a 7/8" dia. steel tube
- Legs are braced with a 3/4" 18-gauge circular footrest for increased strength and stability
- 14" diameter embossed steel seat has a 1/8" tempered hardboard inlay
- Model **FC656** has a 14 1/2" x 15" sq. seat and is reinforced by steel bars
- All stools have four chrome floor glides that won't damage floors
- On the adjustable models the telescopic legs have screw locks that adjust on 1" increments
- Contoured back rest constructed of 19-gauge steel
- Colour: Royal grey



A.



B.



C.



D.



E.

STATIONARY HEIGHT

| Model No. | Seat Height" | Dim." | Wt. lbs. | Price /Each |
|-----------|--------------|-------|----------|-------------|
| A. FC649 | 24 | 14 | 20 | |
| B. FC647 | 24 | 14 | 12 | |
| B. FC648 | 30 | 14 | 14 | |

ADJUSTABLE HEIGHT

| Model No. | Seat Height" | Dim." | Wt. lbs. | Price /Each |
|-----------|--------------|-------------|----------|-------------|
| C. FC653 | 25-33 | 14 | 12 | |
| D. FC655 | 25-33 | 14 | 20 | |
| E. FC656 | 18-26 | 14 1/2 x 15 | 18 | |



MUR-VAN MANUFACTURING

POLYURETHANE SEAT STOOLS

- Maximum comfort, durable economical stools with self-skinned polyurethane padded seat
- Easy to maintain in any environment
- 14" dia. seats mount to stationary, adjustable or swivel stools of various heights for your convenience
- Sit/stand seats (OG389, OG390) offer an ergonomic molded polyurethane seat, mounted on a sturdy 4-leg steel base



OG385



OG387



OG389



MUR-VAN MANUFACTURING

HEAVY-DUTY ERGONOMIC POLYURETHANE SEATING

- Pneumatic seat height adjustment
- Self skinned 18" x 17" polyurethane seat and back offers stain and puncture resistance
- Sturdy 5-leg, glass reinforced, nylon black base
- Manual vertical back adjustment with built-in lumbar support
- 3 levers, tilt seat, tilt back
- Waterfall edge seat design for greater comfort
- Choice of 2" swivel carpet casters or glides



OJ963



OJ967



MUR-VAN MANUFACTURING

| Model No. | Description | Adjustable Height" | Seat Dimensions" | Price /Each |
|-----------|-----------------------|--------------------|------------------|-------------|
| OG385 | Fixed Seat | 18 - 26 | 13 1/2 x 11 1/2 | |
| OG386 | Fixed Seat | 25 - 33 | 13 1/2 x 11 1/2 | |
| OG387 | Swivel Seat | 23 - 30 | 13 1/2 x 11 1/2 | |
| OG388 | Swivel Seat | 28 - 35 | 13 1/2 x 11 1/2 | |
| OG389 | Shaped Sit/Stand Seat | 18 - 26 | 13 x 9 x 2 | |
| OG390 | Shaped Sit/Stand Seat | 25 - 33 | 13 x 9 x 2 | |

| Model No. | Description | Adjustable Height" | Price /Each |
|-----------|---------------------------------------|--------------------|-------------|
| OJ963 | Ergonomic seating with carpet casters | 16 - 22 | |
| OJ966 | Ergonomic seating with glides | 16 - 22 | |
| OJ964 | Ergonomic seating with carpet casters | 20 - 28 | |
| OJ967 | Ergonomic seating with glides | 20 - 28 | |
| OJ965 | Ergonomic seating with carpet casters | 23 - 33 | |
| OJ968 | Ergonomic seating with glides | 23 - 33 | |

STENO CHAIRS

- A heavy-duty industrial chair at an economical price
- Comfortable 2 1/2" foam-upholstered seat with a full 360° rotation
- Padded backrest with a floating spring action back hinge
- Standard black vinyl upholstery
- A five prong base for increased stability
- Height adjustment from 17" to 22"
- Included: Five swivel black nylon, twin wheel casters



MUR-VAN MANUFACTURING

| Model No. | Colour | Price /Each |
|-----------|--------|-------------|
| OA276 | Black | |

DRAFTING STOOLS

- Designed with a contoured seat and back
- 3-way back adjustment provides user comfort
- Seat and back are made with a solid 3/4" plywood frame
- Standard 100% polypropylene black fabric upholstery
- One piece durable plastic base with nylon footrest
- Two pneumatic gas levers simplifies height adjustment from 23" to 33" and ergonomic tilt
- With casters



MUR-VAN MANUFACTURING



| Model No. | Colour | Price /Each |
|-----------|--------|-------------|
| OA286 | Black | |

MID BACK DRAFTING/TASK CHAIRS

- Contoured foam seat 20" x 18 1/2"
- Back dimensions 18" x 19" with integral ergo support
- Standard 100% polypropylene black fabric upholstery
- 5-leg glass reinforced nylon base
- Height adjustment 16"-22"
- Multi function type seat mechanism
- T-arms



MUR-VAN MANUFACTURING



| Model No. | Colour | Price /Each |
|-----------|--------|-------------|
| ON565 | Black | |

ERGONOMIC INDUSTRIAL SHOP SEATING

- Industrial chairs featuring comfortable and supportive seating that is easy to clean
- Seats made of a soft molded polyurethane material, backs formed to support the body for greater comfort and less fatigue
- Adjustable back rest
- Nylon base with dual wheel hard floor casters
- Optional chrome foot ring
- Glides recommended with foot ring
- Model **OC816** and **OC821** task chairs have adjustable backrest height, depth and angle
- Optional stool kit model **OC822**



| Model No. | Description | Adjustable Height" | Wt. lbs. | Price /Each |
|------------------|------------------------------|--------------------|----------|-------------|
| W/CASTERS | | | | |
| OC815 | Operator's chair | 27-32 1/2 | 25 | |
| OC816 | Task chair | 27-32 1/2 | 26.5 | |
| NH450 | Operator's chair w/stool kit | 34-44 | 30 | |
| NH451 | Task chair w/stool kit | 34-44 | 31.5 | |
| W/GLIDES | | | | |
| OC820 | Operator's chair | 27-32 1/2 | 25 | |
| OC821 | Task chair | 27-32 1/2 | 26.5 | |
| NH452 | Operator's chair w/stool kit | 34-44 | 30 | |
| NH453 | Task chair w/stool kit | 34-44 | 31.5 | |



OC815



OC816

SHOPTECH ERGONOMIC INDUSTRIAL STOOLS

- Industrial seating that brings ergonomic comfort and productivity to the shop floor, the laboratory or the shipping office
- Durable, easy-to-clean, molded polyurethane seating is the perfect solution for clean rooms or wipe down applications
- Overall height of 16" to 21 1/2" with a 19" wide by 14" deep seat



| Model No. | Description | Wt. lbs. | Price /Each |
|--------------|-------------|----------|-------------|
| OE088 | Stool | 20 | |



ESD (ELECTROSTATIC DISSIPATIVE) SHOPTECH SEATING

- Engineered to control discharge of static electricity by "wicking" static away from the user, sensitive electronic components and volatile chemicals and materials
- Seat 19" W x 18" D
- Backrest 18" W x 18" H
- Independent, infinite position back and seat angle adjustment with tilt lock control
- Tilt-tension adjustment
- Forward seat tilt-lock control
- Polished aluminum base and chromed gas cylinder
- Casters are coated with conductive urethane and are suitable for hard floors



ON700



| Model No. | Description | Price /Each |
|----------------|---|-------------|
| ON700* | Black fabric ESD chair | |
| ON701* | Blue fabric ESD chair | |
| ON702* | Black vinyl ESD chair | |
| ON703** | Black fabric ESD chair with adjustable footring | |
| ON704** | Blue fabric ESD chair with adjustable footring | |
| ON705** | Black vinyl ESD chair with adjustable footring | |

*Adjustable seat height: 37" - 41 3/4"

**Adjustable seat height: 41 1/2" to 49 1/4"



ON703

SIT/STAND STOOLS

- Sit/stand stools dramatically reduce fatigue for workers unable to sit down on the job
- Can be positioned for up close work
- Model **FC683** heavy gauge triangular glides provide safety, features a built-in footrest, a 14" wide x 13" deep self skinning polyurethane seat mounted to an adjustable spring suspension frame that automatically tilts forward up to 15° while in use
- Removable seat attaches to frame with a double pin locking system which easily adjusts to 10 positions from 21" to 35"
- Model **FC685** features a sturdy, tip proof 5-leg base with a padded comfortable "Bicycle style" seat
- Pneumatic height adjustment from 23 1/2" to 33 1/2"



MUR-VAN MANUFACTURING

FC685



FC683



| Model No. | Description | Price /Each |
|--------------|----------------------|-------------|
| FC683 | Manual adjustment | |
| FC685 | Pneumatic adjustment | |

ERGONOMIC SEATING

- Designed for the industrial work place, food industry, or any application
- Provides workers with dynamic seating necessary for the maintenance of health and productivity
- Premium black self-skinned integral molded polyurethane foam seat and back for durability and ease of maintenance
- Stool features proper lumbar support, swivel and water-fall seat and three pneumatic height adjustments
- 3 levers, tilt seat, tilt back



MUR-VAN MANUFACTURING

FC677



OD515



| Model No. | Description | Adjustable Height" | Price /Each |
|---------------------------------|-------------|--------------------|-------------|
| 2" SWIVEL CARPET CASTERS | | | |
| FC677 | No footring | 16 - 22 | |
| FC678 | Footring | 20 - 29 | |
| FC679 | Footring | 23 - 33 | |
| W/GLIDES | | | |
| OD513 | No footring | 16 - 22 | |
| OD514 | Footring | 20 - 29 | |
| OD515 | Footring | 23 - 33 | |

ESD (ELECTROSTATIC DISSIPATIVE) LOW BACK TASK CHAIR STOOLS

- 10" pneumatic seat height adjustment (20" to 30") with a contoured, black polyurethane seat and back
- Articulating hinged back provides support
- Seat depth adjustment enables proper back to front seat support
- Footring, back upright and cylinder are chromed to provide a clean environment
- Ideal for electronic labs or defence industries who require furniture designed to direct static electricity away from delicate equipment, components, or chemicals
- Dimensions: 18" W x 20 1/2" D x 42" H

Model No. **OK046**
Price/Each \$



SEATING

TA180 ERGONOMIC STOOLS

- Ergonomic stool that improves user comfort and reduces foot and leg pain due to prolonged standing
- Ideal for users that need freedom of movement
- Base is equipped with non-skid pads
- Dual-density cushions and closed-cell foam padding
- Seat: 12" W x 10" D
- Standard pneumatic lift: 26.75" to 36.75"
- Weight capacity: 300 lbs.
- Overall dimensions 22" W x 16" D x 27" H



| Model No. | Description | Material | Colour | Price /Each |
|-----------|------------------|----------|------------|-------------|
| OP276 | Industrial Grade | Vinyl | Black/Grey | |

TF180 ERGONOMIC STOOLS

- Ergonomic stool with a larger seat that improves workers' comfort
- Reduces lumbar muscular effort
- Padding: Dual-density cushions and closed-cell foam
- Standard pneumatic lift: 20.5" to 28.25"
- Dimensions of backrest: 15.5" W x 14" H
- Dimensions of seat: 18.5" W x 16" D
- Five 3" caster wheels that are adaptable to all surfaces
- Weight capacity: 300 lbs.
- Overall dimensions: 28" W x 28" D x 33" H



| Model No. | Description | Material | Colour | Price /Each |
|-----------|------------------|----------|------------|-------------|
| OP241 | Industrial Grade | Vinyl | Black/Grey | |

SYNERGO I ERGONOMIC CHAIR

- Reduces muscle effort by promoting correct body alignment and posture
- Adjustable seat height and backrest provides optimal back support for users of different sizes
- Dual-density cushions and closed-cell foam padding
- Easy to maintain black/grey antibacterial and antistatic vinyl
- Five 3" caster wheels that are adaptable to all surfaces
- Standard Pneumatic Lift: 18" to 21"
- Seat Dimension: 18.5" W x 18" D
- Backrest Dimension: 17" W x 24" H
- Weight Capacity: 300 lbs.
- Overall Dimensions: 45" W x 28" D x 28" H



| Model No. | Description | Material | Colour | Price /Each |
|-----------|------------------|----------|------------|-------------|
| OP510 | Industrial Grade | Vinyl | Black/Grey | |

SYNERGO II ERGONOMIC CHAIRS

- Ergonomic chair that provides excellent working posture and reduces muscular effort
- Ideal for multiple shifts and 24-hour use
- Five 3" caster wheels adaptable to all surfaces
- Dual-density cushions and closed-cell foam padding
- Backrest: 17" W x 21.5" H
- Seat: 18.5" W x 18" D
- Standard pneumatic lift: 18" to 21"
- Weight capacity: 300 lbs.
- Overall dimensions: 28" W x 28" D x 40.5" H



| Model No. | Description | Material | Colour | Price /Each |
|-----------|------------------|----------|------------|-------------|
| OP280 | Industrial Grade | Vinyl | Black/Grey | |

FLEX ERGONOMIC CHAIRS

- Ergonomic chair that reduces pressure sensations felt in the buttocks, wrists and lumbar region
- Reduces fatigue by limiting muscular effort
- Five 3" caster wheels adaptable to all surfaces
- Dual-density cushions and closed-cell foam padding
- Backrest: 12" W x 15.5" H
- Seat: 15" D x 18" W
- Standard pneumatic lift: 18.5" to 23.5"
- Weight capacity: 300 lbs.
- Overall dimensions: 17" W x 19" D x 21" H



| Model No. | Description | Material | Colour | Price /Each |
|-----------|------------------|----------|------------|-------------|
| OP274 | Industrial Grade | Vinyl | Black/Grey | |

SF180 ERGONOMIC STOOLS

- Ergonomic stool with a larger seat that improves workers' comfort
- Reduces lumbar muscular effort
- Five 3" caster wheels adaptable to all surfaces
- Dual-density cushions and closed-cell foam padding
- Backrest: 15.5" W x 14" H
- Seat: 16" D x 18.5" W
- Standard pneumatic lift: 18.75" to 24"
- Weight capacity: 300 lbs.
- Overall dimensions: 25" W x 25" D x 36" H



| Model No. | Description | Material | Colour | Price /Each |
|-----------|------------------|----------|------------|-------------|
| OP278 | Industrial Grade | Vinyl | Black/Grey | |

STAG4 ERGONOMIC BENCHES

- Ergonomic seat allows users to work in a kneeling position with comfort
- Reduces pressure sensations felt in the knees, ankles and lumbar region
- One lever mechanism for seat height adjustment and 20° adjustable slope for kneeling position
- Padding: Dual-density cushions and closed-cell foam
- Standard pneumatic lift: 17.5" to 22.5"
- Knees: 8.5" W x 15.5" D
- Dimensions of seat: 12.5" W x 12" D
- Five 3" caster wheel adaptable to all surfaces
- Includes tool tray
- Weight capacity: 300 lbs.
- Overall dimensions: 28" W x 20" D x 21" H



| Model No. | Description | Material | Colour | Price /Each |
|-----------|------------------|----------|------------|-------------|
| OG347 | Industrial Grade | Vinyl | Black/Grey | |

TA300 ERGONOMIC CHAIR

- Improves comfort while working on elevated surfaces
- The backrest provides support and reduces muscular fatigue and discomfort
- Dual-density cushions and closed-cell foam padding
- Easy to maintain black/grey antibacterial and antistatic vinyl
- Standard Pneumatic Lift: 24.5" to 34.5"
- Seat Dimension: 11.5" W x 10.5" D
- Backrest Dimension: 12.5" W x 10.5" H
- Overall Dimensions: 51" W x 16-1/2" D x 21" H



| Model No. | Description | Material | Colour | Price /Each |
|-----------|------------------|----------|------------|-------------|
| OP496 | Industrial Grade | Vinyl | Black/Grey | |

SPECIALTY STOOLS

- Designed specifically for laboratories and medical offices
- Available with 14" diameter, 3" high vinyl or fabric covered seat
- Pneumatic mechanism to adjust the height
- Full foot ring is standard on stools except for models **OC785**, **OC791** and **OC788**
- Choice of casters or glides available



| Model No. | Vinyl | Fabric | Adjustable Height" | Wt. lbs. | Price /Each |
|----------------|-------|--------------|--------------------|----------|-------------|
| CASTERS | | | | | |
| OC785 | | OC791 | 16 - 22 | 14 | |
| GLIDES | | | | | |
| OC788 | - | | 16 - 22 | 14 | |
| OC819 | - | | Optional Foot Ring | | |

PNEUMATIC SWIVEL STOOLS

- 5" gas lift
- Height adjustable from 15" to 20 1/2"
- Black select vinyl
- Weight: 10 lbs.
- Model No. **OD846**
- Price/Each \$

- 10" gas lift
- Height adjustable from 22" to 32"
- Options SKR18 footring
- Weight: 12 lbs.
- Model No. **OD847**
- Price/Each \$



POLYETHYLENE FOLDING CHAIRS

- Dimensions: 18 3/4" W x 16 1/2" D x 35" H
- Durable contoured back and seat for all day comfort
- Steel framing and folding legs for extra strength
- Easy to clean
- Capacity: 350 lbs.



| Model No. | Description | Price /Each |
|--------------|-------------|-------------|
| ON602 | White | |
| OP448 | Black | |
| OP449 | Blue | |

ACTIV™ A-20 GUEST CHAIR

- Breathable mesh back
- Padded seat for comfort
- Seat Width: 18.5"
- Seat Depth: 19.5"
- Backrest Height: 16"
- Weight Capacity: 250 lbs.
- Overall Dimensions: 22-1/2" W x 22-1/2" D x 31" H

Model No. **OP794**

Price/Each \$



STEEL FOLDING CHAIR

- Folding frame saves space
- Easy to transport
- Easy to clean
- Overall dimensions: 18-1/2" W x 15-3/4" D x 30-1/2" H
- Weight Capacity: 300 lbs.



| Model No. | Colour | Material | Description | Price /Each |
|--------------|--------|----------|--------------------------------------|-------------|
| OP960 | Black | Steel | - | |
| OP961 | Brown | Steel | - | |
| OP962 | Black | Steel | Vinyl Padded Chair for Extra Comfort | |
| OP963 | Brown | Steel | Vinyl Padded Chair for Extra Comfort | |

HANGING CHAIR CADDIES

- Space-saving solution, ideal in applications where space is limited
- Holds up to 84 chairs
- Portable, easy mobility with 4" swivel casters
- Overall dimensions: 64 1/2" L x 33 1/2" W x 70 1/4" H

Model No. **OK072**

Price/Each \$



POLYPROPYLENE FOLDING BENCHES

- Durable high-density polypropylene construction
- Steel framing and folding legs for extra strength
- Dimensions: 72" L x 12" W x 17" H
- Folded dimensions: 36" L x 12" W x 4" H
- Weight: 20 lbs.

Model No. **ON699**

Price/Each \$



SEATING

SONIC™ ARMLESS STACKING CHAIRS

- Ideal for meeting rooms, guest seating, and food facilities
- Durable molded seat and back
- Material: Plastic
- Includes standard black glides
- Frame Construction: 16 ga. steel
- Frame Finish: Chrome
- Seat Height: 18"
- Backrest Height: 18"
- Seat Width: 17"
- Seat Depth: 16"
- Weight Capacity: 300 lbs.
- Overall Dimensions: 21-1/2" W x 21-1/2" D x 33" H
- Stacks up to five high on floor or 10 high on chair dolly

| Model No. | Colour | Price /Each |
|-----------|--------|-------------|
| OP931 | Blue | |
| OP932 | Grey | |
| OP315 | Black | |



KEY® CHAIR

- Chairs can be nested for easy storage and transport
- Frame Finish: Chrome
- Material: Fabric
- Colour: Black
- Overall Dimensions: 23-1/2" W x 18-1/5" D x 30" H
- Weight Capacity: 200 lbs.
- Stacks 13 high on the floor or 15 high on chair dolly

| Model No. | Description | Price /Each |
|-----------|-----------------------------|-------------|
| OP936 | Armless | |
| OP937 | Black Polyurethane Armrests | |



IBEX GUEST CHAIRS

- Comes standard with 4 dual wheel casters
- Comfortable air-flow mesh back
- Seat height: 17.5"
- Weight capacity: 300 lbs.
- Overall dimensions: 20" W x 24" D x 34.5" H

| Model No. | Description | Price /Each |
|-----------|---------------------------|-------------|
| OP305 | Armless, Black, Fabric | |
| OP306 | Armless, Charcoal, Fabric | |
| OP307 | Armless, Black, Vinyl | |
| OP308 | Armless, Charcoal, Vinyl | |
| OP309 | Black, Fabric | |
| OP310 | Charcoal, Fabric | |
| OP311 | Black, Vinyl | |
| OP312 | Charcoal, Vinyl | |



POPCORN™ CHAIR

- Ideal for conference areas, cafeterias, classrooms, and healthcare spaces
- Flexible backrest offers support and continuous comfort
- Frame Finish: Chrome
- Material: Plastic
- Weight Capacity: 300 lbs.
- Seat Height: 16-1/2"
- Backrest Height: 16"
- Seat Width: 18"
- Seat Depth: 18"
- Overall Dimensions: 23-1/2" W x 20" D x 32-1/2" H
- Stacks up to 10 high on floor or 34 high on chair dolly

| Model No. | Colour | Price /Each |
|-----------|--------|-------------|
| OP933 | Black | |
| OP934 | Blue | |
| OP935 | Grey | |



STACKING CHAIRS

A117

- Standard black with grey vein powder coated frame
- 18 gauge 22" x 22" steel frame
- Additional support bar under the seat
- Stacks 10 high
- Seat: 15" W x 15.5" D
- Backrest: 17" W x 20" H
- Weight capacity: 250 lbs.
- Overall dimensions: 17.25" W x 18" D x 37" H



| Model No. | Description | Price /Each |
|-----------|---------------|-------------|
| OP260 | Black, Vinyl | |
| OP261 | Black, Fabric | |

VENTURA

- Weighs only seven pounds and is surprisingly strong
- 7/8" tubular steel frame is in the shape of an X under the seat giving rigidity and strength to the unit
- Moulded polypropylene seat and back with a texture finish
- Glides are insert type and will not mark floors
- Will stack with most plywood stacking chairs
- 18" seat height



| Model No. | Frame Colour | Back and Seat Colour | Price /Each |
|-----------|--------------|----------------------|-------------|
| OD919 | Beige | Navy | |
| OD920 | Beige | Grey | |

HORIZON CHAIRS

- Incredibly strong and durable thermoplastic shell which assures correct posture and provides maximum comfort for sustained periods of sitting
- Arched back with sculptured cut-out provides excellent ventilation
- Heavy-duty welded, unitized chassis designed to enable stacking yet avoids protruding legs
- Legs made of 16-gauge tubular steel
- Heavy 14-gauge channel cross braces provide anchor points for the shell
- Frame is black
- Seat height: 18"



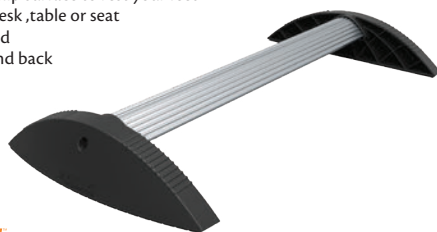
| Model No. | Colour | Price /Each |
|-----------|--------|-------------|
| OD925 | Blue | |
| OD929 | Grey | |
| OD933 | Black | |
| OD937 | Green | |

FOOTREST

- Weight Capacity: 300 lbs.
- Raised ridges provide a non-slip surface to rest your feet
- Pairs with any Safco Active desk, table or seat
- Helps improve circulation and remove pressure from feet and back
- Colour: Black
- Overall Height: 3-1/2"
- Overall Width: 14"
- Overall Length: 26"

Model No. OP704

Price/Each \$



STRESS BUSTER™ FOOTREST

- Frame Material: Steel
- Frame Finish: Chrome
- Alternating rollers for foot massage
- Adjustable tilt encourages frequent position changes
- Colour: Black
- Overall Height: 5"
- Overall Width: 2-1/2"
- Overall Length: 20-1/4"

Model No. OP662

Price/Each \$



ADJUSTABLE FOOTRESTS

- Fixed at a comfortable 8° angle to relieve muscle strain
- Removable 14-gauge platform has nine elevation positions which lock into place with a double locking pin
- Black powder coat paint finish and textured anti-slip covering on the platform
- Dimensions: 20" W x 12" D x 5.5" to 15" H

Model No. FC684

Price/Each \$



HEAVY-DUTY STEEL STEP STOOLS

- Comes with a double platform with non-slip rubber tread
- Spring-loaded casters retract under slight pressure, forcing base to the floor
- 11" diameter upper platform and 13 1/2" diameter lower platform
- 17 1/4" diameter base has an all-around protective bumper
- 16 1/2" overall height
- Wt. 10 lbs.
- Colour: Black

Model No. ON528

Price/Each \$



STEP STOOLS

- Tough one piece poly construction with anti-skid bottom
- Threaded top and expanded step
- 16" diameter base provides added stability
- Glides easily on retractable rubber casters
- 13" overall height
- Capacity: 300 lbs.
- Weight: 7 lbs.

| Model No. | Colour | Price /Each |
|-----------|--------|-------------|
| 0A299 | Black | |
| 0A300 | Beige | |



ADJUSTABLE FOOTRESTS

- Unique footplate has a rubber non-slip cover providing optimal comfort
- Tilt and height adjustments
- Easily adjust angle with a single foot
- Surface dimensions of 15" W x 11" D
- Black and grey finish

Model No. ON706

Price/Each \$



Ask us about volume prices!

In many cases you will benefit from quantity prices.



TABLES

ADJUSTABLE STAND-UP WORKSTATIONS

- Mobile and adjustable for comfort and productivity
- Effortless crank adjustment from sitting to standing
- Promotes better posture, reduced back and neck pain, a thinner waist line and other health benefits
- Caster Type: Four 3" furniture grade, two with locking brakes
- Includes all hardware and tools required for assembly



LUXOR H. WILSON

| Model No. | Table Finish | Base Finish | Overall Dimensions | | | | Height Range" | Price /Each |
|-----------|--------------|-------------|--------------------|---|--------|---|---------------|-----------------|
| | | | H" | x | W" | x | D" | |
| OP282 | Walnut | Silver | 42-3/4 | x | 47-1/4 | x | 29-1/2 | 29 - 42 3/4 |
| OP283 | Walnut | Silver | 42-3/4 | x | 59 | x | 29-1/2 | 29 - 42 3/4 |
| OP529 | Black Oak | Silver | 45-1/4 | x | 47-1/4 | x | 29-1/2 | 29 1/2 - 45 1/4 |
| OP530 | Black Oak | Black | 45-1/4 | x | 47-1/4 | x | 29-1/2 | 29 1/2 - 45 1/4 |
| OP531 | Black Oak | Silver | 45-1/4 | x | 59 | x | 29-1/2 | 29 1/2 - 45 1/4 |
| OP532 | Black Oak | Black | 45-1/4 | x | 59 | x | 29-1/2 | 29 1/2 - 45 1/4 |

ELECTRIC HEIGHT-ADJUSTABLE TABLE

- Racetrack tabletop
- Features 4 programmable memory presets and digital display
- Soft start/stop control and quiet motor
- Steel base with powder coat finish
- Length: 72"
- Width: 36"
- Height: 50"
- Height Range: 24-1/2" to 50"
- Assembly required



SAFCO



| Model No. | Colour Family | Base Colour | Price /Each |
|-----------|---------------|-------------|-------------|
| OP721 | Cherry | Black | |
| OP722 | Cherry | Grey | |
| OP723 | Grey | Black | |
| OP724 | Grey | Grey | |

PRECISION DRAFTING TABLES

- Durable drafting table features a heavy gauge steel base and a 4 post design with stabilizing bars on the bottom for maximum stability.
- Table includes a 12 1/2" W x 29 3/4" D tool drawer with lock and a 38 1/8" W x 28 3/4" D reference drawer under the board
- Boards are available in 60" or 72" sizes and have a non-glare green surface. Angle of board is easily adjustable for a comfortable working position on any project
- Grey enamel finish on base.

SAFCO

| Model No. | Description | W" | x | D" | x | H" | Wt. lbs. | Price /Each |
|-----------|-------------|--------|---|--------|---|--------|----------|-------------|
| OA914 | Small Board | 60 | x | 37 1/2 | x | 1 | 77 | |
| OA909 | Large Board | 72 | x | 37 1/2 | x | 1 | 95 | |
| OA912 | 4 Post Base | 56 3/8 | x | 30 1/2 | x | 35 1/2 | 99 | |

FOLI™ HEIGHT ADJUSTABLE TABLES

- Electric height adjustment allows for easy movement from sitting to standing and back throughout the day
- Single motor hex rod drive system
- Shadow power draw of 0.5 watts
- All table frames are easy to assemble with few parts
- Height Range: 27.69" to 46.2"
- Capacity: 220 lbs.
- Base Finish: Silver Powder Coat



global



| Model No. | Colour | Overall Dimensions | | | | | Price /Each |
|-----------|--------|--------------------|---|----|---|----|-------------|
| | | H" | x | W" | x | D" | |
| OP284 | Brown | 46-1/5 | x | 60 | x | 30 | |

IONIC DESK TABLES

- Freestanding rectangular desk with 2 legs and stability panel
- Made of thermally fused laminate surfaces with 3mm PVC matching edge
- 2" square posts with levelers
- Designed for quick and easy assembly
- Tested to meet ANSI & BIFMA desking standards
- Overall Height: 29"
- Overall Width: 72"
- Overall Depth: 30"



global



Winter Cherry

| Model No. | Colour | Overall Dimensions | | | | | Price /Each |
|-----------|---------------|--------------------|---|----|---|----|-------------|
| | | H" | x | W" | x | D" | |
| OP327 | Dark Espresso | 29 | x | 72 | x | 30 | |
| OP328 | Winter Cherry | 29 | x | 72 | x | 30 | |
| OP329 | Dark Espresso | 29 | x | 60 | x | 30 | |
| OP330 | Winter Cherry | 29 | x | 60 | x | 30 | |



Shown with base which is sold separately

CAFETERIA TABLES

- 1 1/8" thermally fused walnut finish laminate
- Self-edged top with a black metal skirt
- Chromed legs have adjustable feet glides
- Ideal for cafeteria or work table

global



OK050

| Model No. | Top Size | | | Price /Each |
|-----------|----------|---|----|-------------|
| | L" | x | W" | |
| OK050 | 60 | x | 30 | |
| OK051 | 72 | x | 30 | |
| OK052 | 72 | x | 36 | |
| OK053 | 84 | x | 36 | |

FOLDING TABLES

- 5/8" thick tops
- Durable walnut colour plastic laminate finish
- Folding legs and perimeter metal frame constructed of 16-gauge brown enamel steel
- Table height: 29"

Rodo Industries Inc.



OA304

OA948

| Model No. | Top Size | | | Price /Each |
|-----------|--------------|---|----|-------------|
| | L" | x | W" | |
| OA948 | 72 | x | 36 | |
| OA304 | 60" Diameter | | | |

EDGE STACKING CADDIES

- For rectangular or round tables
- Ideal for tables of all widths especially wider than 30" that must fit through a narrow doorway
- 14-gauge steel tubing with a black finish
- Shipping weight: 65 lbs.



OG344

MIDWEST

| Model No. | Used With | Dimensions | | | | Table Capacity | Price /Each |
|-----------|-------------|------------|---|--------|---|----------------|-------------|
| | | L" | x | W" | x | H" | |
| OG344 | Rectangular | 49 | x | 31 1/4 | x | 32 1/4 | 10 |
| OG340 | Round | 49 | x | 31 1/4 | x | 41 1/4 | 8 |

POLYETHYLENE FOLD-IN-HALF TABLES

- Blow-molded polypropylene top
- Lightweight with ability to fold the table in half to 3 1/2" thick for easy storage
- 29" fixed table height with locking steel legs
- Folding legs automatically lock by use of gravity activated mechanism when opened
- Easy to clean
- Dimensions: 72" L x 30" W x 29" H
- Capacity: 350 lbs.

Model No. ON601
Price/Each \$



KLETON

CAFETERIA TABLES

- Chrome pedestal base
- Tiger walnut top
- Leveling glides

global



ON728

ON726

| Model No. | Description | Price /Each |
|-----------|---|-------------|
| ON725 | Round Cafeteria Table, 30" Dia. x 29 1/2" H | |
| ON726 | Round Cafeteria Table, 36" Dia. x 29 1/2" H | |
| ON727 | Square Cafeteria Table, 30" W x 30" D x 29 1/2" H | |
| ON728 | Square Cafeteria Table, 36" W x 36" D x 29 1/2" H | |

POLYETHYLENE FOLDING TABLE

- Folding legs automatically lock by use of gravity-activated mechanism when opened
- Lightweight with folding legs for easy storage
- Blow-molded high-density polyethylene top
- Capacity: 395 lbs.
- Top Thickness: 2"
- Table Top Colour: White
- Table Shape: Round



KLETON

| Model No. | Seats | Dimensions | | | | Wt lbs. | Price /Each |
|-----------|-------------|------------|---|----|---|---------|-------------|
| | | L" | x | W" | x | H" | |
| OQ320 | 6-8 people | 48 | x | 48 | x | 29 | 15 |
| OQ321 | 8-10 people | 60 | x | 60 | x | 29 | 20 |

POLYETHYLENE FOLDING TABLES

- Blow molded polypropylene top
- Lightweight with folding legs for easy storage
- 29" fixed table height with locking steel legs
- Easy to clean
- Folding legs automatically lock by use of gravity activated mechanism when opened
- Capacity: 500 lbs.



KLETON

| Model No. | Dimensions | | | | Wt. lbs. | Price /Each |
|-----------|------------|---|----|---|----------|-------------|
| | L" | x | W" | x | H" | |
| ON598 | 48 | x | 24 | x | 29 | 22 |
| ON599 | 72 | x | 30 | x | 29 | 35 |
| ON600 | 96 | x | 30 | x | 29 | 50 |

COMPUTER SUPPLIES

IPAD® HOLDERS

- Ideal for use in education, health-care, corporate, retail and point of sale environments
- Compatible with iPad® models 2, 3, 4 and iPad® Air
- Lock and key secured case for tablet
- Provides home button accessibility
- Interior cable management
- 90° rotation and 75° tilt adjustable
- **OP808:** Steel base includes mounting holes for bolts for fixed application (floor bolts not included)
- **OP809:** Base Dimension: 300 mm x 400 mm



| Model No. | Description | Height" | Price /Each |
|-----------|--|---------|-------------|
| OP808 | Anti-theft and floor mounted iPad® stand | 49.25 | |
| OP809 | Portable and free standing iPad® stand | 49.5 | |

IPAD® HOLDERS

- Ideal for use in education, health-care, corporate, retail and point of sale environments
- Compatible with iPad® models 2, 3, 4 and iPad® Air
- Lock and key secured case for tablet
- Provides home button accessibility
- Interior cable management
- 90° rotation and 75° tilt adjustable
- **OP810:** Steel base includes mounting holes for bolts for fixed application (floor bolts not included)
- **OP811:** Base Dimension: 200 mm x 300 mm



| Model No. | Description | Height" | Price /Each |
|-----------|--|---------|-------------|
| OP810 | Anti-theft and floor mounted iPad® stand | 17.5 | |
| OP811 | Portable and free standing iPad® stand | 17.75 | |

MONITOR & KEYBOARD STAND

- Allows the user to raise monitor and keyboard for use as a standing workstation
- Promotes better posture, optimal viewing comfort and helps alleviate eye strain
- Easily adjustable
- Cables concealed within the adjustable arm
- Compatible with most desks and work surfaces
- Dimensions: 26" W x 28" D x 42-1/2" H
- Weight Capacity: 11 lbs.

Model No. **OP664**
Price/Each \$



ACTIVERGO™ MONITOR ARM

- Cost-effective and ergonomic alternative for monitor support
- Extend, tilt and swivel your monitor up to 90° left and right for easy viewing
- Reach: 16.75"
- Tilt motion makes it easy to reduce glare
- Clamp and grommet mount are included
- Features cable management clips
- Fits most 13" to 27" monitors
- Frame: Steel and aluminum structure
- Finish: Silver
- VESA standard mounts for monitors (75 and 100 mm)
- Weight Capacity: 17.6 lbs. (8 kg.)
- Warranty: 5 year



| Model No. | No. of Screen | Price /Each |
|-----------|---------------|-------------|
| OP802 | 1 | |
| OP803 | 2 | |

ACTIVERGO™ MONITOR ARMS

- Ergonomic alternative for monitor support and helps free up space on your workstation
- Highly adjustable arm moves up, down, forwards, and backwards
- Monitor can rotate and swivel 180° and tilt up to 90°
- Detachable VESA plate for easy installation of monitor
- Features cable management system for clean look
- Clamp and grommet mount are included
- Weight Capacity Per Arm: 19.8 lbs. (9 kg.)
- Material: Die cast aluminum
- Warranty: 5 year



| Model No. | No. of Screen | Price /Each |
|-----------|---------------|-------------|
| OP804 | 1 | |
| OP805 | 2 | |

MONITOR ARMS

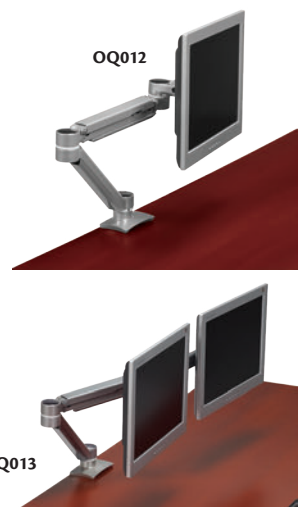
- 13" of usable height adjustment
- Includes cable manager
- 360 degree swivel
- Material: Die cast aluminum and steel
- Reach: 26"
- Colour: Silver

SINGLE SCREEN

- Clamp and grommet mounting options
- Dimensions: 29.44" W x 8.88" D x 4.75" H

DOUBLE SCREEN

- Quick and easy clamp installation
- Dimensions: 27.5" W x 19.75" D x 5" H



| Model No. | No. of Screens | Weight Capacity lbs. | Price /Each |
|-----------|----------------|----------------------|-------------|
| OQ012 | 1 | 14 | |
| OQ013 | 2 | 10 | |

HEAVY-DUTY KEYBOARD DRAWERS

HEAVY-DUTY SLIDE OUT TRAYS

- Adjustable mounting brackets
- Smooth action ball bearing slides
- Available with or without extendible mouse platform
- Tray size: 11" x 23" w/o mouse platform

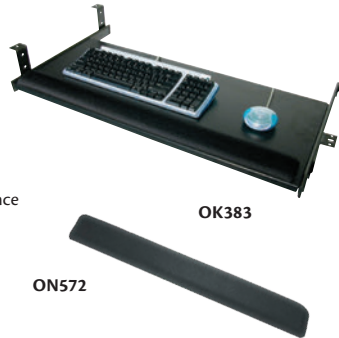


EQ HORIZON

| Model No. | Description | Price/Each |
|-----------|---|------------|
| OB536 | Keyboard Tray (Heavy-Duty) | |
| OB537 | Keyboard Tray (Heavy-Duty) w/mouse platform | |

KL-28S ECONOMY KEYBOARD DRAWERS

- Laminate with 3-mil PVC edging (28" x 11.75")
- Fixed height, 16" ball bearing slides
- Keyboard and mouse on same level
- Mouse-friendly surface
- Suitable for right or left handed users
- Low profile platform maximizes knee clearance
- Meets or exceeds BIFMA standards
- Optional 27" gel foam wrist support



OK383

ON572

EQ HORIZON

| Model No. | Description | Price/Each |
|-----------|--------------------------|------------|
| OK383 | Economy Keyboard Drawer | |
| ON572 | Gel-Filled Wrist Support | |

MOBILE COMPUTER CABINETS

- All-steel welded construction
- Top monitor compartment is 22 1/2" W x 23" D x 18 3/4" H with a slide-out keyboard shelf
- Locks independently of bottom section which includes 2 adjustable shelves
- 5" polyolefin casters (2 rigid, 2 swivel w/brake)
- Total dimensions: 26" W x 24" D x 64" H
- Wt.: 149 lbs.
- Finish durable baked enamel blue and light grey
- Includes: Vented back for air circulation and a 6-outlet power strip with built-in surge suppression
- Shipped fully assembled
- Equipment not included**

Model No. OC532
Price/Each \$

edsal



MOBILE COMPUTER CABINETS

- All-steel construction
- Slide-out keyboard tray
- Lower lockable cabinet is 24 5/8" W x 22 7/8" D x 22 5/8" H
- Two-position shelf can be located for desk top style or up to 18" H tower style CPU's
- Fixed shelf is 24 5/8" W x 22 7/8" D x 11 1/2" H and provides ample room for any sheet fed style or continuous form style printer
- Rear cabinet access holes for paper feed, cables and ventilation fan (not included)
- 5" polyolefin casters (2 rigid, 2 swivel w/brake)
- Total dimensions: 27" W x 24" D x 49 1/4" H
- Weight: 125 lbs.
- Colour: Blue
- Shipped knocked down, assembly required with simple hand tools
- Equipment not included**

Model No. OC839
Price/Each \$

edsal



KEYBOARD DRAWERS

- 26" tray with integrated mouse area
- Fits all keyboard sizes
- 3 position height adjustable
- Includes a full-length gel wrist pad
- Dimensions: 26" x 13 5/8" x 2 3/4"

Model No. OTG387
Price/Each \$



JIVE ARTICULATING KEYBOARD SYSTEMS

- Lift n' lock "leverless" height adjustment
- Height adjustment range of 2.5" above and 6" below work-surface
- Innovative dial tilt makes angle adjustment quick and easy - angle adjustment +10° to -15°
- Tilt and height indicator displays present keyboard position
- 26" steel platform
- Mouse and keyboard on the same level
- 26" Gelfoam™ palm/wrist support
- Mouse/cord management rails (right or left)
- Anti-skid / anti-static pads keep keyboard in place
- Mouse friendly surface
- 21" smooth glide storage track
- 360° swivel mount
- Suitable for right or left handed users
- Low profile mechanism and platform maximizes knee clearance
- Meets or exceeds BIFMA and ADA standards

Model No. ON567
Price/Each \$

EQ HORIZON



MOBILE SECURITY COMPUTER CABINETS

- Secure locking cabinet with resistant acrylic see-thru window for LCD monitor
- Slide out locking keyboard is 19 3/4" W x 17 1/2" D x 4" H
- Lower compartment is 20 1/2" W x 21" D x 23 1/2" H and has a locking front and rear access doors
- Two convenient side wing shelves for additional work space, fold down when not required
- 5" heavy-duty casters (2 rigid, 2 swivel w/brake)
- Overall dimensions: 24 1/2" W x 22 1/2" D x 62 1/4" H
- Powder coated finish provides a durable finish
- Equipment not included**

edsal



| Model No. | Colour | Price/Each |
|-----------|------------|------------|
| OG880 | Blue | |
| OG881 | Putty | |
| OG882 | Light Grey | |
| OG883 | Black | |

COMPUTER CABINETS

- A unique two-piece heavy-duty all-welded steel construction that provides space efficient security for your valuable electronic equipment
- Locking upper compartment with plexiglass window provides viewable access for most 20" monitors
- Lower compartment features one fixed bottom and one adjustable shelf
- Top level can be bolted onto a desk (bolts not included)
- Louvers in the rear provide equipment ventilation
- Heavy-duty all-welded steel top and bottom sections bolt together for easy assembly
- Includes: 5" casters (2 rigid, 2 swivel w/brake)
- Equipment not included**

edsal



OE825

| Model No. | Description | W" | x | D" | x | H" | Colour | Price /Each |
|-----------|---------------------------------------|--------|---|--------|---|--------|------------|-------------|
| OE824 | Complete computer enclosure w/casters | 24 1/2 | x | 22 1/2 | x | 59 1/2 | Light grey | |
| OE825 | Complete computer enclosure w/casters | 24 1/2 | x | 22 1/2 | x | 59 1/2 | Putty | |
| OE826 | Top level (internal) | 20 3/4 | x | 21 3/4 | x | 19 1/4 | Light grey | |
| OE827 | Top level (internal) | 20 3/4 | x | 21 3/4 | x | 19 1/4 | Putty | |

COMPUTER SUPPLIES

PLASTIC AV HEIGHT-ADJUSTABLE CARTS

- Push and position media equipment with ease
- Heavy-gauge plastic resists dents and scratches
- Holds up to a 20" monitor and has three outlet UL approved mini-surge protector with power switch
- Mobile on 4 swivel casters (2 locking)
- Capacity: top shelf 50 lbs., middle shelf 15 lbs., bottom shelf 15 lbs.
- Dimensions: 27 3/4" W x 18 1/2" D x 42" H
- Equipment not included

Model No. OK004

Price/Each \$



MUV™ STAND-UP WORKSTATIONS

- 45" high fixed workstation
- Decoratively molded side panels hides cables
- Keyboard shelf extends 9 3/4" and retracts under the work surface when not in use
- Keyboard shelf dimensions: 24 3/4" W x 13 1/2" D
- Weight capacity: 100 lbs. (desk top), 25 lbs. (keyboard tray)
- Powder coat steel frame, melamine laminate compressed wood shelves
- Dual wheel carpet casters with two locking
- Work surface dimensions: 29 1/2" W x 19 3/4" D x 3/4" H
- Finished product dimensions: 29 1/2" W x 22" D x 45" H



| Model No. | Description | Price /Each |
|-----------|----------------------------------|-------------|
| ON729 | Stand-Up Workstation, Cherry | |
| ON730 | Stand-Up Workstation, Grey | |
| ON731 | Stand-Up Workstation, Medium Oak | |

MUV™ STAND-UP ADJUSTABLE HEIGHT WORKSTATIONS

- Adjustable height: 35" to 49" H
- Decoratively molded side panels hides cables
- Keyboard shelf extends 9 3/4" and retracts under the work surface when not in use
- Keyboard shelf dimensions: 22 3/4" W x 13 1/2" D
- Weight capacity: 100 lbs. (desk top), 25 lbs. (keyboard tray)
- Powder coat steel frame, melamine laminate compressed wood shelves
- Dual wheel carpet casters with two locking
- Work surface dimensions: 29 1/2" W x 19 3/4" D x 3/4" H
- Finished product dimensions: 29 1/2" W x 22" D x 35" to 49" H



| Model No. | Description | Price /Each |
|-----------|-------------|-------------|
| ON732 | Cherry | |
| ON733 | Grey | |
| ON734 | Medium Oak | |

MOBILE PRESENTATION WORKSTATION

- Adjustable height computer workstation from 39" to 45" is designed for laptop or desktop computers
- The workstation is compact and mobile for easy set up and transport
- 3" casters, two with locking brakes
- Colour: Charcoal Gray
- Dimensions 24" W x 31" D x 45" H

Model No. ON610

Price/Each \$

LUXOR H.WILSON



PRESENTATION CART

- Three shelf cart with front pull-out shelf
- Includes 3 outlet surge suppressing electric assembly with 15' cord and built in cord wrap
- 4" casters, two with locking brake
- Polyethylene shelves will not scratch, dent, rust or stain
- Colour: Black
- Dimensions: 24" W x 18" D x 42" H

Model No. ON609

Price/Each \$

LUXOR H.WILSON



ADJUSTABLE STAND-UP DESKTOP DESK

- Convert any surface into a standing desk
- Enjoy the benefits of a standing desk at a fraction of the cost
- Seamlessly moves from sit to stand in a matter of seconds with a pneumatic air cylinder
- No assembly or workspace changes required
- Colour: Black
- Height Range: 2-3/4" to 15-3/4"
- Maximum weight capacity: 20 lbs.
- Dimensions: 31-1/2" W x 22-1/4" D x 15-3/4" H

Model No. OP563

Price/Each \$

LUXOR H.WILSON



GOYA™ SIT-STAND WORKSTATION

- Transforms any seated desk into a sit-stand workstation
- No assembly required
- Easily adjustable due to gas assisted lift mechanism
- Adjustable keyboard surface tilts
- Can accommodate both clamp and grommet mount monitor arms
- Colour: Black
- Weight Capacity: 35 lbs.
- Dimensions: 35-2/5" W x 24" D x 20" H

Model No. OP807

Price/Each \$

HORIZON SEATING



IONIC™ HEIGHT ADJUSTABLE TABLE

- Electric height adjustable table
- Features a quiet electric motor
- 1" thick laminate top with 2 mm edge
- Adjustable Height Range: 27-1/2" to 45-1/4"
- Lift Capacity: 220 lbs.
- Dimensions: 30" W x 60" L x 45-1/4" H
- Base Colour: Silver



OP939



| Model No. | Colour Family | Price /Each |
|-----------|---------------|-------------|
| OP939 | Grey | |
| OP940 | White | |

MUV™ TOWER DESK

- Keyboard tray extends 9-3/4" and retracts
- Pull-out printer shelf
- Accommodates CPU up to 16 1/2" high
- Base Colour: Black
- Frame Material: Steel
- Shelf Material: Compressed Wood
- Desk Top Weight Capacity: 100 lbs.
- Four casters with two locking brakes
- Dimensions: 35-1/2" W x 22" D x 34" H

OP657



| Model No. | Colour | Price /Each |
|-----------|----------|-------------|
| OP656 | Cherry | |
| OP657 | Mahogany | |

FOLI™ HEIGHT ADJUSTABLE TABLES

- Electric height adjustment allows for easy movement from sitting to standing and back throughout the day
- Single motor hex rod drive system
- Shadow power draw of 0.5 watts
- All table frames are easy to assemble with few parts
- Height Range: 27.69" to 46.2"
- Capacity: 220 lbs.
- Base Finish: Silver Powder Coat



| Model No. | Overall Dimensions W" x D" x H" | Colour | Price /Each |
|-----------|---------------------------------|--------|-------------|
| OP284 | 60 x 30 x 46 1/5 | Brown | |

MUV™ ADJUSTABLE DESK

- Keyboard tray extends 9-3/4" and retracts
- Monitor, printer shelf and keyboard tray are adjustable
- Base Colour: Black
- Frame Material: Steel
- Shelf Material: Compressed Wood
- Desk Top Weight Capacity: 100 lbs.
- Four casters with two locking brakes

OP654



| Model No. | Colour | Dimensions W" x D" x H" | Price /Each |
|-----------|----------|-------------------------|-------------|
| OP652 | Cherry | 29-1/2 x 22 x 34 | |
| OP653 | Mahogany | 29-1/2 x 22 x 34 | |
| OP654 | Cherry | 35-1/2 x 22 x 34 | |
| OP655 | Mahogany | 35-1/2 x 22 x 34 | |

SCOOT™ STAND-UP DESK

- Material: Steel
- Colour: Black
- Weight Capacity: 200 lbs.
- Four casters with two locking brakes
- Dimensions: 39-1/2" W x 23-1/4" D x 42" H

Model No. OP651

Price/Each \$



ADJUSTABLE STAND-UP WORKSTATIONS

- Mobile and adjustable for comfort and productivity
- Effortless crank adjustment from sitting to standing
- Promotes better posture, reduced back and neck pain, a thinner waist line and other health benefits
- Height Range: 29-1/2" - 45-1/4"
- Caster Type: 4-3" furniture grade, two with locking brakes
- Includes all hardware and tools required for assembly



LUXOR H.WILSON



| Model No. | Height Range" | Dimensions W" x L" x H" | Table Finish | Base Finish | Price /Each |
|-----------|------------------|--------------------------|--------------|--------------------|-------------|
| OP282 | 29 to 42-3/4 | 47-1/4 x 29-1/2 x 42-3/4 | Walnut | Silver Powder Coat | |
| OP529 | 29-1/2 to 45-1/4 | 47-1/4 x 29-1/2 x 45-1/4 | Black Oak | Silver | |
| OP530 | 29-1/2 to 45-1/4 | 47-1/4 x 29-1/2 x 45-1/4 | Black Oak | Black | |
| OP283 | 29 to 42-3/4 | 59 x 29-1/2 x 42-3/4 | Walnut | Silver Powder Coat | |
| OP531 | 29-1/2 to 45-1/4 | 59 x 29-1/2 x 45-1/4 | Black Oak | Silver | |
| OP532 | 29-1/2 to 45-1/4 | 59 x 29-1/2 x 45-1/4 | Black Oak | Black | |

ADJUSTABLE TABLES

ELECTRIC HEIGHT-ADJUSTABLE TABLE

- Racetrack tabletop
- Features 4 programmable memory presets and digital display
- Soft start/stop control and quiet motor
- Steel base with powder coat finish
- Height Range: 24-1/2" to 50"
- Dimensions: 42" W x 84" L x 50" H
- Assembly required



OP725



OP728



SAFCOACTIVE

| Model No. | Colour | Base Colour | Price /Each |
|-----------|--------|-------------|-------------|
| OP725 | Cherry | Black | |
| OP726 | Cherry | Grey | |
| OP727 | Grey | Black | |
| OP728 | Grey | Grey | |

ELEVATE™ ADJUSTABLE DESK

- Great for use in offices and personal workspaces
- Features an adjustable footrest for added comfort and movement while standing
- Sitting workspace can be mounted on either right or left side of standing workspace
- Height Range: 38" to 50"
- Dimensions: 57-1/2" W x 24" L x 50" H



OP658



SAFCOACTIVE

| Model No. | Colour | Price /Each |
|-----------|--------|-------------|
| OP658 | Beige | |
| OP659 | Walnut | |

ELECTRIC HEIGHT-ADJUSTABLE TABLE

- Height Range: 24-1/2" to 50"
- Features 4 programmable memory presets and digital display
- Soft start/stop control and quiet motor
- Steel base with powder coat finish
- Includes two cable grommets for cord management
- Assembly required



OP737



OP744



SAFCOACTIVE

| Model No. | Colour | Base Colour | Dimensions W" x L" x H" | Price /Each |
|-----------|--------|-------------|-------------------------|-------------|
| OP729 | Cherry | Black | 24 x 60 x 50 | |
| OP730 | Cherry | Grey | 24 x 60 x 50 | |
| OP731 | Grey | Black | 24 x 60 x 50 | |
| OP732 | Grey | Grey | 24 x 60 x 50 | |
| OP737 | Cherry | Black | 30 x 60 x 50 | |
| OP738 | Cherry | Grey | 30 x 60 x 50 | |
| OP739 | Grey | Black | 30 x 60 x 50 | |
| OP740 | Grey | Grey | 30 x 60 x 50 | |
| OP741 | Cherry | Black | 30 x 72 x 50 | |
| OP742 | Cherry | Grey | 30 x 72 x 50 | |
| OP743 | Grey | Black | 30 x 72 x 50 | |
| OP744 | Grey | Grey | 30 x 72 x 50 | |

ELEVATE™ ADJUSTABLE DESK

- Height Range: 38" to 50"
- Adjustable footrest provides added comfort and movement while standing
- Dimensions: 48" W x 24" L x 50" H



OP661



SAFCOACTIVE

| Model No. | Colour | Price /Each |
|-----------|--------|-------------|
| OP660 | Beige | |
| OP661 | Walnut | |

DATA PROTECTION MEDIA SAFES

- Protects valuable records from vandalism, fire, dust and magnetism
- Paper records will withstand temperatures up to 177°C (350°F)
- Computer media records will withstand temperatures up to 52°C (125°F) and humidity up to 80%
- Rating: UL Class 350 - 1 hour for safe, and data/media insert was furnace tested by manufacturer to 125°F (52°C) for 1 hour
- Pull out media drawers and stationary shelves accessories are also available
- Model **OE770** must be inserted into a U.L. Class 350, 1-hour filing cabinet
- Colour: Beige

F.O.B. Victoriaville, Quebec.

GARDEX



| Model No. | Outside Dimensions | | | | Wt. lbs. | Price /Each |
|--------------|----------------------|--|--|--|----------|-------------|
| | H" x W" x D" | | | | | |
| OE769 | 29 x 21 1/2 x 21 1/2 | | | | 315 | |
| OE768 | 39 x 26 1/2 x 26 1/2 | | | | 567 | |
| OE770 | 9 5/8 x 15 x 21 1/4 | | | | 40 | |

FIRE RESISTANT SAFE

- Manufacturer certified fire and burglary safe
- 60 minutes fire resistive
- Body and door are constructed of 2-1/2" thick bank level alloy
- Includes two 3/4" anchor holes
- Mechanism with 1" massive stainless steel bolts and 2 automatic relocking systems
- Lock protected by a 3/8" thick hard plate
- High quality finish with anti-rust treatment
- Colour: Grey

F.O.B. Victoriaville, Quebec.

GARDEX



| Model No. | Outside Dim. | | | | Cap Cu. Ft. | Number of Shelves | Weight lbs. | Overall Depth" | Price /Each |
|--------------|------------------|--|--|--|-------------|-------------------|-------------|----------------|-------------|
| | D" x W" x H" | | | | | | | | |
| OP956 | 19-3/4 x 17 x 17 | | | | 1 | 1 | 385 | 21-1/2 | |
| OP957 | 24-1/4 x 19 x 24 | | | | 2.54 | 1 | 640 | 26 | |
| OP958 | 24-1/4 x 23 x 27 | | | | 3.78 | 2 | 800 | 26 | |

GRAND PRIX STORAGE SAFES

STANDARD SAFES

UL® Class 350 1-hour fire and impact rating. Keep documents intact for one full hour despite exterior temperatures as high as 927°C (1700°F).

Features include:

- Heavy gauge satin coat steel with anti-rust treatment
- Insulated with moisture pockets between the walls
- Heavy-duty hinges
- 6" continuous fixed locking bar
- Includes mechanical combination lock and combination change key
- Adjustable shelves
- Heavy-duty caster base

F.O.B. Victoriaville, Quebec.



GARDEX

LEDGER SAFE

Manufacturer-certified for 2 hours in a fire. Full size ledger safe ensures document security despite ambient temperatures reaching 1000°C (1850°F).

Features include:

- Three heavy-duty hinges
- Three adjustable shelves
- Includes mechanical combination lock and combination change key
- Caster base

F.O.B. Victoriaville, Quebec.



| Model No. | | Outside Dimensions | | | | | Inside Dimensions | | | | | Cap. Cu. Ft. | Shelves | Wt. lbs. | Price /Each |
|----------------|-------|--------------------|---|--------|---|--------|-------------------|---|--------|---|--------|-----------------|---------|-------------|----------------|
| Black | Beige | H" | x | W" | x | D" | H" | x | W" | x | D" | | | | |
| STANDARD SAFES | | | | | | | | | | | | | | | |
| OC750 | OA690 | 24 | x | 18 1/2 | x | 18 1/2 | 17 1/2 | x | 15 1/2 | x | 12 1/2 | 2.2 | 1 | 168 | |
| OC751 | OA691 | 29 | x | 21 1/2 | x | 21 1/2 | 22 3/8 | x | 18 1/2 | x | 15 3/8 | 3.92 | 1 | 252 | |
| OC752 | OA692 | 39 | x | 26 1/2 | x | 26 1/2 | 32 1/4 | x | 23 1/2 | x | 20 3/8 | 9.36 | 3 | 480 | |
| OC753 | OA686 | 50 1/2 | x | 26 1/2 | x | 26 1/2 | 42 1/4 | x | 23 1/2 | x | 20 3/8 | 12.29 | 3 | 560 | |
| LEDGER SAFES | | | | | | | | | | | | | | | |
| OC749 | OC736 | 60 | x | 26 1/2 | x | 26 1/2 | 50 | x | 20 | x | 20 | 11.57 | 3 | 880 | |

FIRE RESISTANT FILING CABINETS

All Gardex filing cabinets have UL® Class 350 1-hour fire rating. Cabinets maintain interior temperatures below 177°C (350°F) in ambient temperatures reaching 927°C (1700°F) for one hour. The char point of paper is only 230°C (420°F).

Valuable documents, mailing lists and critical records are kept safe from fire. Each drawer is independently insulated to protect documents even when another drawer is left open. Key operated plunger lock secures all drawers.

F.O.B. Victoriaville, Quebec.



GARDEX

| Model No. | | Outside Dimensions | | | | Inside Dimensions | | | | Wt. lbs. | Price /Each |
|--|-------|--------------------|----------|--------|---------|-------------------|--------|---------|-----|----------|-------------|
| Black | Beige | H" x | W" x | D" | H" x | W" x | D" | Drawers | | | |
| VERTICAL FILING CABINET - ACCOMODATES LEGAL WIDTH FILES | | | | | | | | | | | |
| OC737 | OC740 | 54 x | 19 3/4 x | 31 | 9 1/2 x | 15 x | 26 | 4 | 670 | | |
| OC738 | OC741 | 41 x | 19 3/4 x | 31 | 9 1/2 x | 15 x | 26 | 3 | 520 | | |
| OC739 | OC742 | 28 x | 19 3/4 x | 31 | 9 1/2 x | 15 x | 26 | 2 | 386 | | |
| LATERAL FILING CABINET - ACCOMODATES LEGAL OR LETTER WIDTH FILES | | | | | | | | | | | |
| OC743 | OC746 | 55 x | 38 3/4 x | 23 1/2 | 9 1/2 x | 32 1/2 x | 15 1/2 | 4 | 960 | | |
| OC744 | OC747 | 42 x | 38 3/4 x | 23 1/2 | 9 1/2 x | 32 1/2 x | 15 1/2 | 3 | 740 | | |
| OC745 | OC748 | 29 x | 38 3/4 x | 23 1/2 | 9 1/2 x | 32 1/2 x | 15 1/2 | 2 | 538 | | |



OFFICE PRODUCTS

INSTRUMENTS, SCALES & ELECTRICAL

SHIPPING & PACKAGING

TOOLS & EQUIPMENT

WELDING & METALWORKING

SAFETY EQUIPMENT & SUPPLIES

JANITORIAL & MAINTENANCE

MATERIAL HANDLING & STORAGE

FILING & STORAGE SYSTEMS

ONYX™ FILE CART

- Mobile file cart
- Material: Mesh
- Four 1-1/2" swivel wheels with two locking brakes
- **OP700:** Letter-size file cube
- **OP701:** Two letter-size file cubes, top shelf stores additional supplies
- **OK218:** Letter-size hanging file cube, two storage drawers, top shelf stores additional supplies
- **OP702:** Four storage drawers, top shelf stores additional supplies
- **OP703:** Two storage drawers, open hanging files
- Assembly required



| Model No. | Dimensions | | | | Price /Each |
|-----------|------------|---|--------|---|-------------|
| | W" | x | D" | x | H" |
| OP700 | 13-1/2 | x | 16-3/4 | x | 13 |
| OP701 | 15-3/4 | x | 17 | x | 27 |
| OK218 | 15-3/4 | x | 17 | x | 27 |
| OP702 | 15-3/4 | x | 17 | x | 27 |
| OP703 | 15-3/4 | x | 17 | x | 27 |

OP701

OP702



OP700

OK218

OP703

VERTICAL FILE CABINET

- High side walls accommodate hanging files and eliminate ball bearing suspension for easy opening and closing
- Drawer front features a recessed angled full pull
- Lock included
- Meets or exceeds ANSI/BIFMA

OP923



OP912

| Black | Model No. | Grey | Beige | No. of Drawers | Dimensions | | | | Price /Each |
|--------------|-----------|-------|-------|----------------|------------|---|----|---|-------------|
| | | | | | W" | x | D" | x | H" |
| LETTER WIDTH | | | | | | | | | |
| OP912 | OP916 | OP920 | | 2 | 15-1/7 | x | 25 | x | 29 |
| OP914 | OP918 | OP922 | | 4 | 15-1/7 | x | 25 | x | 52 |
| LEGAL WIDTH | | | | | | | | | |
| OP913 | OP917 | OP921 | | 2 | 18-1/7 | x | 25 | x | 29 |
| OP915 | OP919 | OP923 | | 4 | 18-1/7 | x | 25 | x | 52 |

LATERAL CABINETS

- Interlock system allows for only one drawer to open at a time
- Lock bars on both sides of the cabinet for increased security
- Comes standard with counterweight
- 12" high drawers
- Includes four leveling glides
- Meets or exceeds ANSI/BIFMA



OP908

OP906

OP324



| Black | Model No. | Grey | Beige | No. of Drawers | Dimensions | | | | Price /Each |
|-------|-----------|-------|-------|----------------|------------|---|--------|---|-------------|
| | | | | | W" | x | D" | x | H" |
| OP324 | OP325 | OP326 | | 2 | 36 | x | 19-1/4 | x | 27-31/100 |
| OP905 | OP907 | OP910 | | 3 | 36 | x | 19-1/4 | x | 39-3/5 |
| OP321 | OP322 | OP323 | | 4 | 36 | x | 19-1/4 | x | 52-6/100 |
| OP906 | OP908 | OP911 | | 5 | 36 | x | 19-1/4 | x | 66-5/9 |

MULTI-STOR CABINETS

- Cabinet features two fixed and one adjustable shelf
- Cabinet doors open at least 170° for easy access
- Each shelf has a total capacity of 110 lbs. or 75 lbs. if not evenly spread out
- Lateral file drawers includes side to side hanging file bars
- Two separate locking system in each cabinet
- Four adjustable levelling glides
- Dimensions: 36" W x 18" D x 65-1/4" H



OTE784



| Model No. | Colour | Price /Each |
|-----------|--------|-------------|
| OTE783 | Black | |
| OTE784 | Grey | |
| OTE785 | Beige | |

FILE TAXI

- File Taxi is a great office solution for maximizing space and storage
- Features two box drawers, one 12" legal file drawer with full suspension and hanging bars and one top drawer with pencil tray and divider plate
- Includes fixed shelf and 3 plate dividers
- One key locks all drawers
- Fits under most standard 29" high work surfaces (**OQ002-OQ004**)
- Two 2.5" fixed casters and two swivel casters (**OQ005-OQ007**)
- Convenient foldable wagon-style pull handle (**OQ005-OQ007**)
- No assembly required



OQ006



| Model No. | Description | Dimensions | | | | Colour | Price /Each |
|-----------|------------------|------------|---|----|---|--------|-------------|
| | | W" | x | D" | x | H" | |
| OQ002 | File Taxi | 30 | x | 18 | x | 28 | Black |
| OQ003 | File Taxi | 30 | x | 18 | x | 28 | Grey |
| OQ004 | File Taxi | 30 | x | 18 | x | 28 | Beige |
| OQ005 | Mobile File Taxi | 30 | x | 18 | x | 29-1/2 | Black |
| OQ006 | Mobile File Taxi | 30 | x | 18 | x | 29-1/2 | Grey |
| OQ007 | Mobile File Taxi | 30 | x | 18 | x | 29-1/2 | Beige |

FILING & STORAGE SYSTEMS

ENVIRASTOR® STOR/DRAWER®

- Economical & environmental: 100% recycled material and a minimum of 67% post-consumer waste
- Sturdy internal liner in the outer shell provides long lasting strength
- Attractive green graphics are printed on the kraft background with water-based ink
- Recommended stacking 2-high on metal shelving



| Model No. | Record Size | Inside Drawer Dim. | | | | | Price /Each |
|-----------|-------------|--------------------|---|----|---|--------|-------------|
| | | W" | x | D" | x | H" | |
| OA077 | Cheque | 9 | x | 24 | x | 4 1/2 | |
| OA086 | Letter | 12 1/4 | x | 24 | x | 10 1/2 | |
| OA078 | Legal | 15 1/4 | x | 24 | x | 10 1/2 | |

STOREX STORAGE FILE DRAWER SYSTEMS

- Durable plastic construction with plastic rollers on drawers for smooth operation
- Convenient built-in label holder
- Accommodates file folders or hanging files
- Stackable up to 10 units high with secure interlocking system
- Ideal for dust and mildew control in schools, hospitals and other public buildings



| Model No. | Record Size | Inside Drawer Dim. | | | | | Colour | Price /Each |
|-----------|-------------|--------------------|---|--------|---|--------|----------------------|-------------|
| | | W" | x | D" | x | H" | | |
| OE785 | Letter | 15 | x | 24 1/4 | x | 11 1/2 | Grey/Granite (front) | |
| OE786 | Letter | 15 | x | 24 1/4 | x | 11 1/2 | Black/Grey (front) | |
| OE812 | Legal | 17 7/8 | x | 24 3/8 | x | 11 1/4 | Grey/Granite (front) | |

STORAGE BOXES

- Fits letter or legal size
- Dimensions: 12" W x 15" D x 10" H

Model No. OA087

- Wood grain finish
- Stackable up to 850 lbs.
- 59% post consuming

Price/Each \$

OA087



Model No. OA075

- 100% recycled material
- Stackable up to 350 lbs.
- 67% post consuming
- Comes with attached lid

Price/Each \$



OA075

STORAGE FILES

- Stack up to 5 boxes high
- Hanging folder rails included
- Recycled material: 60%
- Post-consuming: 50%

Model No. OL942

- Letter size
- 12 1/2" W x 23 1/4" D x 10 3/8" H

Price/Each \$

Model No. OL943

- Legal size
- 15 1/2" W x 23 1/4" D x 10 3/8"

Price/Each \$

OL943



FILE FOLDERS

Other colours available



Priced per box of 100



| Description | Model No. Letter | Price /Box | Model No. Legal | Price /Box |
|--------------------|------------------|------------|-----------------|------------|
| 1/2 CUT REVERSIBLE | | | | |
| 9 1/2 pt Manila | OB762 | | OB761 | |
| 9 1/2 pt Ivory | OB763 | | OB764 | |
| 10 1/2 pt Ivory | OB765 | | OB766 | |
| STRAIGHT CUT | | | | |
| 9 1/2 pt Manila | OTD040 | | OTD243 | |
| 10 1/2 pt Ivory | OTD056 | | OTD258 | |

REVERSAFLEX® HANGING FILE FOLDER

- Poly-laminate reinforced for 10 times the durability
- Includes Infopockets™, interior pockets for filing smaller items such as floppy disks or photos
- Reinforced upper and inner fold



| Yellow | Model No. Blue | Green | Description | Dimensions L" x H" | Qty /Pkg. | Price /Each |
|--------|----------------|-------|-------------|--------------------|-----------|-------------|
| OB714 | OB715 | OB711 | Letter Size | 11 x 8-1/2 | 25 | |
| OB722 | OTD153 | OB719 | Legal Size | 14 x 8-1/2 | 25 | |

ECONO/STOR® BOXES

- Perfect choice for economical storage of semi-active or dead records
- Features smooth rolled edges provides a clean finish and avoids paper cuts
- The versatile OA081 can be adapted to your needs, holding up to one cubic foot of legal or letter size files



| Model No. | Record Size | Inside Drawer Dim. | | | | | Price /Each |
|-----------|-----------------|--------------------|---|----|---|----|-------------|
| | | W" | x | D" | x | H" | |
| OA082 | Letter | 12 | x | 24 | x | 10 | |
| OA079 | Legal | 15 | x | 24 | x | 10 | |
| OA081 | Letter or Legal | 12 | x | 15 | x | 10 | |

FLIP TOP ECONOMY CONTAINERS

- Stacks when lid is closed
- Nests when empty
- Recessed carry handles
- Dimensions: 21 1/2" L x 15" W x 12 1/2" H
- Capacity: 45 litres

TRANSLUCENT

Model No. CD383 Black Top
Price/Each \$

Model No. CF555 Red Top
Price/Each \$

GREY

Model No. CD459
Price/Each \$



CD459



CD383



CF555



OFFICE
PRODUCTS

INSTRUMENTS,
SCALES &
ELECTRICAL

SHIPPING &
PACKAGING

TOOLS &
EQUIPMENT

WELDING &
METALWORKING

SAFETY
EQUIPMENT
& SUPPLIES

JANITORIAL &
MAINTENANCE

MATERIAL
HANDLING &
STORAGE

1585

FILING & STORAGE SYSTEMS

VERTICAL FILING SYSTEMS

Ideal for filing blueprints, charts, artwork and other oversized documents. Cuts filing and retrieving time; saves on floor space. Exclusive suspension system allows clamps to slip easily in and out of storage racks. Clamps open to 1" to hold up to 100 individual sheets (20 lbs. maximum weight per clamp).



HEAVY-DUTY MOBILE STANDS

- Steel construction with four 3" ball bearing swivel casters (2 lock)
- Holds 12 hanging clamps in pivot brackets that swing open for easy access to contents
- Height adjusts from 43 5/8" to 61 5/8" for sheets up to 54" long
- Base extends 27 1/2" to 37 1/2"
- Easy assembly
- Tropic sand finish



| Model No. | Description | Wt. lbs. | Price /Each |
|-----------|--------------------------------|----------|-------------|
| OE129 | Mobile Stand only | 47 | |
| OA195 | Mobile Stand c/w 12-24" Clamps | 61 | |
| OA196 | Mobile Stand c/w 12-30" Clamps | 63 | |
| OA213 | Mobile Stand c/w 12-36" Clamps | 65 | |
| OA197 | Mobile Stand c/w 12-42" Clamps | 67 | |

VERTICAL FILING CABINETS

- All steel construction provides secure, high density, bulk storage of reproductions
- Holds up to 12 hanging clamps (clamps not included)
- Doors can mount for left or right hand operation
- Locking handle
- Small cabinet holds 18" to 24" clamps
- Large cabinet holds up to 36" clamps
- Colour: Tropic Sand
- Shipped assembled



| Model No. | Description | Wt. lbs. | Price /Each |
|-----------|--|----------|-------------|
| OB142 | Small Vertical File Cabinet: 42" H x 16" W x 27" D | 78 | |
| OB143 | Large Vertical File Cabinet: 54 1/2" H x 16" W x 39" D | 127 | |

PRINT-LOCK® HANGING CLAMPS



- Clamps hold up to 100 sheets or 20 lbs.
- Green plastic label holders included
- Available in natural aluminum with polished chrome plated cast alloy wing knobs and black end caps



| Model No. | Description | Clamp pkg. | Wt. lbs. | Price /Each |
|-----------|------------------|------------|----------|-------------|
| OE135 | 18" long Hanging | 6 | 6 | |
| OE136 | 24" long Hanging | 6 | 7 | |
| OE137 | 30" long Hanging | 6 | 8 | |
| OE138 | 36" long Hanging | 6 | 9 | |
| OE139 | 42" long Hanging | 6 | 10 | |

TUBULAR STEEL WIRE ROLL FILES

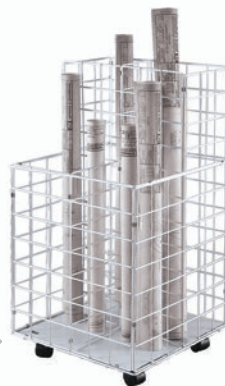
- Low price, high quality appearance
- Light grey tubular steel frame with chrome plated grids
- Twin wheel casters (2 lock)
- Dim.: 23 3/8" H x 18 1/3" W x 14 3/8" D
- Shipped knocked down



| Model No. | Tube Description | Size" | Wt. lbs. | Price /Each |
|-----------|------------------|---------------|----------|-------------|
| OE132 | 12-tube storage | 3 3/4 x 3 3/4 | 9 | |
| OE133 | 20-tube storage | 2 3/4 x 2 3/4 | 10 | |

WIRE ROLL FILES

- Organize, protect and keep oversize documents within ready reach
- Exclusive dustguard bottom keeps materials clean and protects edges from tearing and bending
- 2 different compartment heights; four 8" x 8" storage bins
- Heavy-gauge steel rod construction with white plastic coating; select documents at a glance
- Swivel casters
- Dim.: 30 1/2" H x 16 1/4" W x 16 1/2" D
- Wt. 12 lbs



Model No. OA209
Price/Each \$

MOBILE ROLL FILES

- The ideal form of active filing for engineers, draftsmen, surveyors and designers
- Materials store upright in square fibreboard tubes; grandstand design allows different size rolls to be stored in one file
- Sturdy, wood-core construction with laminate beige vinyl covering
- Swivel casters
- Shipped knocked down



UPRIGHT ROLL FILES

- Economical files keep drawings, blueprints and charts organized and within easy reach
- Constructed of heavy-duty corrugated fibreboard with walnut wood grain finish
- Tubes reinforced by plastic moulding
- Slotted hand hole in back
- 4 rubber feet
- O.A.: 22" H (12" high in front) x 15" W x 12" D
- Weight: 4 lbs.
- Shipped knocked down



| Model No. | No. of Tubes | Tube Size" | Price /Each |
|-----------|--------------|------------|-------------|
| OA206 | 12 | 3 7/8 sq. | |
| OA672 | 20 | 2 3/4 sq. | |

| Model No. | Tube Size" | No. of Tubes | Overall Dimensions W" x D" x H" | Wt. lbs. | Price /Each |
|-----------|---------------|--------------|---------------------------------|----------|-------------|
| OA677 | 3 3/4 x 3 3/4 | 21 | 30 1/8 x 15 3/4 x 29 1/8 | 52 | |
| OA673 | 2 3/4 x 2 3/4 | 20 | 15 1/4 x 13 1/4 x 23 1/2 | 22 | |
| OA207 | 2 3/4 x 2 3/4 | 50 | 30 1/8 x 15 3/4 x 29 1/8 | 53 | |
| OE131 | 7 x 7 | 8 | 30 1/8 x 15 3/4 x 29 1/8 | 46 | |

FILING & STORAGE SYSTEMS



SAFCO

STEEL PLAN FILES

- Welded steel construction, wrap around corners and sturdy inner frame
- Front supports add stacking strength
- Files are modular so they can be used individually or in a space saving stack
- Stack up to five high on a closed base
- Reinforced top offers additional work and storage space
- 5 and 10 drawer files can be mixed or matched for customized high volume storage
- Choice of 6" closed base or 20" high base
- Baked enamel finish in Tropic Sand or Grey
- All flat files have museum/archival quality point finish



OB146

- Two units stacked

OPTIONAL BASES FOR STEEL PLAN FILES

Closed Bases

- Holds up to five files
- Raises files 6" off ground
- Recessed 2 3/4"



High Bases

- Raises files 20" off the floor and raises top of file to a 36" level to provide work space
- Enclosed back and sides and open front provide extra bookshelf space



OB169

OB151



Base sold separately

5 DRAWER

- Versatile file stores up to 500 sheets per unit active filing, 750 sheets of semi-active, or 1000 sheets of inactive material
- Five large capacity 2" deep drawers in three cabinet sizes

10 DRAWER

- Ideal for high traffic project storage areas
- Ten 1" deep drawers allow the easiest retrieval of materials from the file and minimize material damage

| Model No. | | Description | Inside Drawer | | | | | Cabinet | | | | | Wt. lbs. | Price /Each |
|-----------|-------------|--|---------------|---|----|---|-------|---------|---|--------|---|--------|----------|-------------|
| Grey | Tropic Sand | | W" | x | D" | x | H" | W" | x | D" | x | H" | | |
| OB146 | OA651 | 5 Drawer | 37 | x | 26 | x | 2 1/8 | 40 3/8 | x | 29 3/8 | x | 16 1/2 | 177 | |
| OB148 | OA186 | 5 Drawer | 43 | x | 32 | x | 2 1/8 | 46 3/8 | x | 35 3/8 | x | 16 1/2 | 222 | |
| OB151 | OA220 | 5 Drawer | 50 | x | 38 | x | 2 1/8 | 53 3/8 | x | 41 3/8 | x | 16 1/2 | 267 | |
| - | OA189 | 10 Drawer | 43 | x | 32 | x | 1 1/8 | 46 3/8 | x | 35 3/8 | x | 16 1/2 | 307 | |
| OB161 | OB162 | High Base for OB146 , and OA651 Cabinets | - | | - | | - | - | | - | | - | 37 | |
| OB165 | OB166 | High Base for OB148 , OA186 and 10 Drawer cabinets | - | | - | | - | - | | - | | - | 42 | |
| OB169 | OB170 | High base for OB151 and OA220 Cabinets | - | | - | | - | - | | - | | - | 47 | |
| OB173 | OA653 | Closed Base for OB146 and OA651 Cabinets | - | | - | | - | - | | - | | - | 22 | |
| OB176 | OA204 | Closed Base for OB148 , OA186 and 10 Drawer Cabinets | - | | - | | - | - | | - | | - | 26 | |
| OB179 | OA187 | Closed Base for OB151 and OA220 Cabinets | - | | - | | - | - | | - | | - | 30 | |

Optional locks: OG362 - 5 Drawer Units Price/Each \$ OG363 - 10 Drawer Files Price/Each \$

DATA ORGANIZERS

- Horizontal literature rack
- All racks easily bolt together with fasteners provided
- Steel modular, horizontal racks that can be grouped for floor or table mounted storage
- Capacity for literature or directories up to three inches thick
- Tan enamel finish
- Includes: Mounting clips



Can be stacked for personalized use!

DURHAM MFG
Est. 1922

| Specifications | Model OA157 | Model OA168 |
|------------------|-------------|-------------|
| Height " | 10 3/4 | 14 1/4 |
| Width " | 33 3/4 | 33 3/4 |
| Depth " | 11 5/8 | 11 5/8 |
| Opening Width " | 11 | 11 |
| Opening Depth " | 11 1/2 | 11 1/2 |
| Opening Height " | 3 | 3 |
| No. of Openings | 9 | 12 |
| Paper Width " | 8 1/2 | 8 1/2 |
| Price/Each | \$ | \$ |

VALUE SORTERS®

- Economical yet sturdy steel/corrugated construction
- All steel exterior and support shelves
- Wide shelf fronts have label holders for easy identification of contents (labels included)
- Quick-lock design for easy assembly without tools
- Letter Size Compartments: 9 3/4" W x 12 1/2" D x 2 1/2" H



SAFCO

| Model No. | | No. of Compartments | Overall Dimensions | | | | Wt. lbs. | Price /Each |
|-----------|-------|---------------------|--------------------|---|--------|---|----------|-------------|
| Black | Grey | | W" | x | D" | x | | |
| OA135 | OA132 | 24 | 32 1/4 | x | 13 1/2 | x | 25 3/4 | 26 |
| OA129 | OA126 | 36 | 32 1/4 | x | 13 1/2 | x | 38 | 36 |
| OA139 | OA141 | 72 | 32 1/4 | x | 13 1/2 | x | 75 | 61 |

OFFICE
PRODUCTS

INSTRUMENTS,
SCALES &
ELECTRICAL

SHIPPING &
PACKAGING

TOOLS &
EQUIPMENT

WELDING &
METALWORKING

SAFETY
EQUIPMENT
& SUPPLIES

JANITORIAL &
MAINTENANCE

MATERIAL
HANDLING &
STORAGE

1587

FILING & STORAGE SYSTEMS

IONIC BOOKCASES

- Designed for quick and easy assembly
- Made of thermally fused laminate surfaces with 3 mm PVC matching edge
- Matching back panel
- Four adjustable floor leveling glides
- Tested to meet ANSI & BIFMA desking standard



| Model No. | Overall Dimensions W" x D" x H" | No. of Shelves | Colour | Price /Each |
|-----------|------------------------------------|----------------|------------|-------------|
| OP331 | 30 x 12 x 65 | 5 | Dark Brown | |
| OP332 | 30 x 12 x 65 | 5 | Brown | |
| OP333 | 30 x 12 x 48 | 4 | Dark Brown | |
| OP334 | 30 x 12 x 48 | 4 | Brown | |

WOOD BOOKCASES

- Gables and shelves are 11/16" thick
- Fully assembled
- Colour: Black



| Model No. | Shelves | Dimensions W" x D" x H" | Price /Each |
|-----------|---------------------------|----------------------------|-------------|
| OK060 | 4 (3 adjustable, 1 fixed) | 36 x 12 x 48 | |
| OK063 | 5 (4 adjustable, 1 fixed) | 36 x 12 x 72 | |

IONIC L-SHAPED DESK SUITES

- L-shaped suite that includes a rolling pedestal and a desk panel
- Made of thermally fused laminate surfaces with 3mm PVC matching edge
- Material: Laminate



| Model No. | Overall Dimensions W" x D" x H" | Colour | Price /Each |
|-----------|------------------------------------|------------|-------------|
| OP335 | 66 x 66 x 29 | Dark Brown | |
| OP336 | 66 x 66 x 29 | Brown | |

IONIC SINGLE PEDESTAL DESKS

- Rectangular desk with hanging box file pedestal
- Made of thermally fused laminate surfaces with 3mm PVC matching edge
- No. of Pedestals: 1
- Pedestal Location: Left
- No. Of Drawers: 2



| Model No. | Overall Dimensions W" x D" x H" | Colour | Price /Each |
|-----------|------------------------------------|------------|-------------|
| OP337 | 60 x 30 x 29 | Dark Brown | |
| OP338 | 60 x 30 x 29 | Brown | |

SAFCO ACTIVE® LOCUS 4 STANDING DESK

- Desk has a tilt option allowing the user to tilt the desktop from 0 - 15 degrees
- Legs are made of cast aluminum with a powder coat finish for long-lasting durability and chip-resistance
- Adjustable Height: 36" to 48"
- Adjustable Height Increments: 1/4"
- Weight Capacity: 180 lbs.
- Easily adjustable with a German spindle/bevel gear system
- Features two cup holders
- White Oak Veneer finish for sleek look



| Model No. | Overall Dimensions W" x D" x H" | Colour | Price /Each |
|-----------|------------------------------------|--------|-------------|
| OP868 | 48 x 30 x 48 | Brown | |
| OP869 | 48 x 30 x 48 | White | |
| OP870 | 60 x 30 x 48 | Brown | |
| OP871 | 60 x 30 x 48 | White | |

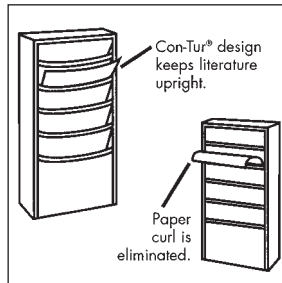
See pages
1564-1575
for our
complete
seating
offering

LITERATURE STORAGE RACKS

- Construction is of sturdy heavy gauge steel
- Provide a convenient and compact way to store literature
- Most models accommodate 150 standard 8 1/2" x 11" sheets, while others are wider to hold magazines and special forms



DURHAM MFG
Est. 1922



OA163



OC543



OA148



OC547

OC549

OC553

| Model No. | | | Overall | | | | | | Openings | | | | | Paper | No. of | Wt. | Price |
|---------------------------|-------|-------|---------|--------|---|--------|---|--------|----------|---|------|---|-------|--------|---------|------|-------|
| Putty | Grey | Tan | Black | W" | x | D" | x | H" | W" | x | D" | x | H" | Width" | Pockets | Lbs. | /Each |
| OC540 | OA152 | OA130 | OC536 | 9 3/4 | x | 4 1/8 | x | 65 1/2 | 8 5/8 | x | 3/4 | x | 8 1/2 | 8 1/2 | 23 | 32 | |
| OC559 | OA166 | OA156 | OA607 | 13 1/8 | x | 4 1/8 | x | 58 1/2 | 12 1/8 | x | 1 | x | 8 3/4 | 12 | 20 | 38 | |
| OC541 | OA161 | OA155 | OC537 | 9 3/4 | x | 4 1/8 | x | 36 | 8 5/8 | x | 3/4 | x | 8 1/2 | 8 1/2 | 11 | 18 | |
| OC558 | OA148 | OA162 | OA125 | 13 1/4 | x | 4 1/8 | x | 36 | 12 1/8 | x | 1 | x | 8 3/4 | 12 | 11 | 24 | |
| OC543 | OA169 | OA165 | OC539 | 9 3/4 | x | 4 1/8 | x | 21 | 8 5/8 | x | 3/4 | x | 8 1/2 | 8 1/2 | 5 | 9 | |
| OC557 | OA163 | OA144 | OA609 | 13 1/8 | x | 2 | x | 26 1/4 | 12 1/8 | x | 5/16 | x | 5 5/8 | 12 | 10 | 13 | |
| ROTATING LITERATURE RACKS | | | | | | | | | | | | | | | | | |
| OC553 | OA149 | OA179 | OC552 | 14 1/8 | x | 14 1/8 | x | 66 | 8 5/8 | x | 3/4 | x | 8 1/2 | 8 1/2 | 92 | 136 | |
| OC549 | OA134 | OA158 | OC548 | 14 1/8 | x | 14 1/8 | x | 48 1/2 | 8 5/8 | x | 3/4 | x | 8 1/2 | 8 1/2 | 44 | 92 | |
| OC547 | OA145 | OA128 | OC546 | 14 1/8 | x | 14 1/8 | x | 21 1/4 | 8 5/8 | x | 3/4 | x | 8 1/2 | 8 1/2 | 20 | 47 | |

WIRE MESH OFFICE MAIL CART

- Ideal for carrying hanging files (letter and legal) mail, packages and tools
- Removable baskets
- 1" diameter, 18 gauge tubular construction
- Cart Material: Chrome Plated
- No. of Shelves: 2
- No. of Baskets: 2
- Shipped Knocked Down

MO209



MO210



MO208



WESCO®

| Model No. | Overall Dimensions | | | | Capacity lbs. | Price /Each |
|-----------|--------------------|---|--------|---|---------------|-------------|
| | D" | x | L" | x | H" | |
| MO208 | 20 | x | 33 | x | 37-1/2 | 200 |
| MO209 | 23-3/4 | x | 33-1/2 | x | 38-1/4 | 200 |
| MO210 | 23-3/4 | x | 43 | x | 38-1/2 | 250 |

OFFICE
PRODUCTS

INSTRUMENTS,
SCALES &
ELECTRICAL

SHIPPING &
PACKAGING

TOOLS &
EQUIPMENT

WELDING &
METALWORKING

SAFETY
EQUIPMENT
& SUPPLIES

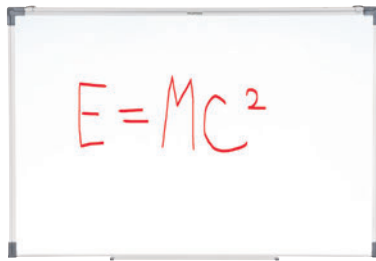
JANITORIAL &
MAINTENANCE

MATERIAL
HANDLING &
STORAGE

MARKER BOARDS

WHITE BOARDS

- White writing surface provides clean, colourful display
- Effortless erasing, wipes clean with cloth or felt brush
- Aluminum frame
- Plastic corners for board and wall protection



NON-MAGNETIC

| Model No. | Dimensions" | Wt. lbs. | Price /Each |
|-----------|-------------|----------|-------------|
| ON530 | 18 x 24 | 3.25 | |
| ON531 | 24 x 36 | 6 | |
| ON532 | 36 x 48 | 10.5 | |
| ON533 | 48 x 72 | 18 | |
| ON534 | 48 x 96 | 30 | |

MAGNETIC

| Model No. | Dimensions" | Wt. lbs. | Price /Each |
|-----------|-------------|----------|-------------|
| ON535 | 24 x 36 | 6 | |
| ON536 | 36 x 48 | 10.5 | |
| ON537 | 48 x 72 | 18 | |

IMPROMPTU® MOBILE WHITE BOARDS

- Steel frame construction
- 2 1/2" dia. casters (two lock)
- Accessory hooks for easel pads
- Includes magnetic accessory tray for dry erase markers and eraser
- 42" W x 21 1/2" D x 72" H
- Style: Magnetic

Model No. ON739
Price/Each \$



PORCELAIN WHITEBOARD

- White magnetic writing surface provides a clean, colourful display
- Porcelain surface is smooth and resistant to staining
- Effortless erasing, wipes clean with cloth or felt brush
- Galvanized steel backing for added durability
- Plastic corners for board and wall protection
- Mounting hardware included



OP534



| Model No. | Dimensions" | Price /Each |
|-----------|-------------|-------------|
| OP534 | 18 x 24 | |
| OP536 | 36 x 48 | |

PANELMATE® ORGANIZER - DRY-ERASE MARKERBOARD

- 11" x 14" melamine markerboard with tray; mounting height is adjustable up to 18" from top of panel
- Fits panels up to 3-1/4" thick
- Welded steel construction
- Size: 13 1/2" W x 1 3/4" D x 16-5/8" H

Model No. OE162
Price/Each \$



QUARTET® EURO™ ENCLOSED MAGNETIC WHITE BOARD

- Features a hinged glass swing door for easy access while protecting displays
- Magnetic white board surface doubles as a magnetic bulletin board
- For indoor and outdoor use
- Glass door has a barrel lock and two keys
- Includes invisible brackets for easy wall mounting
- Style: Magnetic/Dry-Erase
- Colour: White
- Frame Finish: Silver



OP849

| Model No. | Dimensions" | Can hold | Price /Each |
|-----------|-------------|--|-------------|
| OP849 | 30 x 27 | 27" x 25" signage or up to 6 letter size sheets | |
| OP850 | 30 x 39 | 27" x 37" signage or up to 9 letter size sheets | |
| OP851 | 38 x 39 | 35" x 37" signage or up to 12 letter size sheets | |

QUARTET® INFINITY™ GLASS MAGNETIC MOBILE EASEL

- Portable easel features a glass dry-erase board surface
- Glass will not stain or ghost
- Features flip chart holders, 5 locking caster wheels, and one accessory tray
- Adjustable Overall Height: 67" to 77"
- Triple Functionality: White board, magnetic bulletin board and flipchart holder
- Colour: White
- Base Material: Metal

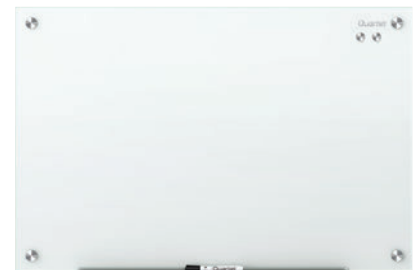


OP852

| Model No. | Description | Board Dimensions W" x H" | Price /Each |
|-----------|-------------|--------------------------|-------------|
| OP852 | - | 24" x 36 | |
| OP853 | Reversible | 48" x 36 | |

QUARTET® INFINITY™ MAGNETIC GLASS BOARD

- Magnetic glass dry-erase board allows for hanging of documents and provides a smooth writing surface
- Board will not stain, ghost, scratch or dent
- Frameless design
- Features a marker tray
- Can be hung vertically or horizontally
- Includes one Quartet® dry-erase marker, two rare-earth magnets, and mounting hardware



OP841

| Model No. | Colour | Dimensions" | Price /Each |
|-----------|--------|-------------|-------------|
| OP841 | White | 36 x 24 | |
| OP842 | White | 48 x 36 | |
| OP843 | White | 72 x 48 | |
| OP844 | White | 96 x 48 | |
| OP845 | Black | 36 x 24 | |
| OP846 | Black | 48 x 36 | |

BULLETIN BOARDS & ACCESSORIES

COMBINATION BOARD

- Dual-purpose cork/white board provides versatility in getting your message across
- Porcelain whiteboard for a smooth and clear writing surface
- Double-sided cork for added durability
- Ideal for office or warehouse environments
- Plastic-molded corners protect the boards and wall from damage
- Sturdy aluminum frame
- Dimensions: 36" W x 24" H

Model No. OP542

Price/Each \$



KLETON

QUARTET® EURO™ ENCLOSED BULLETIN BOARD

- Features a hinged glass swing door for easy access while protecting displays
- Glass door has a barrel lock and two keys
- Includes invisible brackets for easy wall mounting
- For indoor use
- Bulletin Surface Type: Cork
- Frame Finish: Silver Aluminum
- Orientation: Horizontal
- Mounting Hardware Type: Pass-through or Z-bracket



| Model No. | Dimensions" | Can hold | No. of doors | Price /Each |
|-----------|-------------|--|--------------|-------------|
| OP847 | 30 x 27 | 27" x 25" signage or up to 6 letter size sheets | - | |
| OP848 | 38 x 39 | 36" x 27" signage or up to 12 letter size sheets | 2 | |

WHITE BOARD CLEANING WIPES

- Remove ghosting and stubborn marker ink from most dry erase surfaces
- Disposable
- Type: Wipes
- Wipe Size: 5-1/2" X 10"
- Wipes Per Pack: 50

Model No. OTK167

Price/Each \$



CORK BOARDS

- Ideal for office or warehouse environments
- Sturdy aluminum frame
- Plastic-molded corners protect the board and wall from damage
- Double-sided cork for added durability

KLETON

ON593



| Model No. | Dimensions" | Wt. lbs. | Price /Each |
|-----------|-------------|----------|-------------|
| ON593 | 18 x 24 | 3.5 | |
| ON594 | 24 x 36 | 6 | |
| ON595 | 36 x 48 | 10.5 | |
| ON596 | 48 x 72 | 18 | |
| ON597 | 48 x 96 | 30 | |

CORK BOARD ACCESSORIES

PUSH PINS

- Plastic head, assorted colours
- 100/pkg.
- Priced per package

Model No. OJ472

Price/Each \$



QUARTET® MAGNETIC GLASS BOARD ERASER

- 3-in-1 cleaning for glass surface marker boards, chalkboards and whiteboards
- Reversible felt pad for 2 cleaning surfaces and a third microfiber surface offers deep cleaning
- Magnetic eraser can be store directly on a magnetic board
- Colour: Silver
- Dimensions: 6-1/2" L x 2" W x 1-3/8" H

Model No. OP822

Price/Each \$



QUARTET® ENDURAGLIDE® DRY-ERASE MARKERS

- Designed for dry-erase boards
- Low odour marker
- Features a see-through barrel ink gauge
- Anti-roll cap
- Tip Type: Chisel
- Colour Assortment: Black, blue, red, and green
- Markers per Pack: 4

Model No. OP856

Price/Each \$



QUARTET® PREMIUM GLASS DRY-ERASE MARKERS

- Designed for glass surfaces
- Low odour marker
- Features an ink gauge to clearly see ink level
- Tip Type: Bullet



| Model No. | Colour | Colour Assortment | Markers /Pack | Price /Each |
|-----------|----------|-----------------------------|---------------|-------------|
| OP854 | Assorted | Black, blue, red, and green | 4 | |
| OP855 | Black | - | 1 | |

DURA-INK® DRY ERASE INK MARKERS

- Ideal for white board marking in offices and factories
- Mark can be removed quickly and easily with dry rag, towel, or eraser
- No residue or ghosting after mark is removed on most non-porous surfaces



| Model No. | Description | Price /Each |
|-----------|-------------|-------------|
| PE773 | Red | |
| PE774 | Black | |
| PE775 | Blue | |
| PE776 | Green | |

QUARTET® RARE EARTH MAGNETS

- Compatible with magnetic glass marker boards and whiteboards
- Extra strong and large magnets can hold up to 6 unstapled sheets
- Colour: Clear
- Quantity Per Pack: 6
- Strength: 8 lbs.
- Diameter: 3/4"
- Height: 3/4"

Model No. OP821

Price/Each \$



COVERED DIRECTORY BOARDS

- Locking glass door on hinges provides a professional appearance, deters unauthorized access to messages
- Felt grooved black surface
- 1/4" plexiglass in aluminum frame



| Model No. | Dimensions H" x W" | Wt. lbs. | Price /Each |
|-----------|--------------------|----------|-------------|
| OA471 | 36 x 24 | 34 | |

KEY CABINETS & SELF-RETRACTING KEY CHAINS

DUPLI-KEY® TWO-TAGS CABINETS

- Sturdy, welded steel with piano-hinged door and key panels
- Heavy-duty, 20-gauge steel body and 18-gauge steel door
- Mount cabinet on wall (mounting screws included), or use on table or shelf
- Cabinet includes a disc-tumbler lock with two keys
- Includes: red octagon key tags (model **OG894**) and white oval key tags (model **OG895**) same amount as key capacity, cross reference key guide, key loan record sheet, key receipt slip, brass key receipt holders and key collection envelopes
- The double key system insures proper security and avoids key loss
- How it works: the master key is fastened to the red tag and filed permanently on a labelled hook; duplicate keys are fastened to white tags on the same hook; each key is indexed in three ways: by hook number, alphabetically by what the key opens and numerically
- When a key leaves the system, a receipt tag is filled out and hung with the master key and all loans are recorded in the key loan record sheet



OG888



OG893

| Model No. | Dimensions | | | | Key Capacity | Wt. lbs. | Price /Each |
|-----------|------------|---|-------|---|--------------|----------|-------------|
| | W" | x | D" | x | | | |
| OG884 | 8 | x | 2 1/2 | x | 30 | 6 | |
| OG886 | 14 | x | 3 1/8 | x | 60 | 14 | |
| OG887 | 14 | x | 3 1/8 | x | 90 | 15 | |
| OG888 | 16 1/2 | x | 5 | x | 120 | 20 | |
| OG889 | 16 1/2 | x | 5 | x | 180 | 26 | |
| OG890 | 16 1/2 | x | 5 | x | 240 | 28 | |
| OG891 | 16 1/2 | x | 5 | x | 300 | 42 | |
| OG892 | 16 1/2 | x | 5 | x | 390 | 46 | |
| OG893 | 16 1/2 | x | 5 | x | 460 | 49 | |

EXTRA KEY TAGS & ACCESSORIES

| Model No. | Description | Price /Each |
|-----------|--|-------------|
| OK126 | Key Tag, Red Octagon, 20/Pack | |
| OG895 | Key Tag, White Oval, 20/Pack | |
| OP901 | Slotted Plastic Key Tag, White, 20/Pack | |
| OP902 | Slotted Plastic Key Tag, Assorted Colours, 20/Pack | |
| OG896 | Key Collection Envelopes, 100/Pack | |
| OG898 | Plastic Key Receipt Holders, 120/Pack | |
| OG899 | Key Loan Record Sheets, 24/Pack | |
| OG897 | Cross Reference Index Binder, 30 to 80 Keys | |
| OG903 | Cross Reference Index Binder, 90 to 240 Keys | |
| OG904 | Key Receipt Slips, 250/Pack | |

20-KEY RACKS

- Sturdy, lightweight, welded-steel key rack
- Mounts on walls and doors in offices or warehouses
- Dimensions: 13 3/4" W x 2 1/4" H
- Includes: Numbered key tags, "out key" control tags and mounting screws

Model No. OG902
Price/Each \$



KEY STORAGE CABINETS

- Organize and control your office or warehouse with wall mounted key cabinets
- Heavy gauge steel construction with piano hinged doors and key panels - provide a secure location for key storage
- Industrial 19-gauge body with 18-gauge door on all models except model **OJ922**, which has a 20-gauge body and 19-gauge door
- Durable beige powder coated epoxy finish
- All models come with numbered slots and key tags

OJ924



| Model No. | Description | Dimensions | | | | Price /Each |
|-----------|--------------------|------------|---|-------|---|-------------|
| | | W" | x | D" | x | |
| OJ922 | 30 Key Cabinet | 8 | x | 2 1/2 | x | 12 |
| OJ923 | 60 Key Cabinet | 10 3/4 | x | 3 | x | 12 1/4 |
| OJ924 | 120 Key Cabinet | 13 | x | 3 1/4 | x | 17 |
| OJ925 | 240 Key Cabinet | 16 1/2 | x | 5 | x | 20 |
| OJ927 | 500 Key Cabinet | 18 | x | 5 1/2 | x | 25 |
| OJ928 | Key Tags - 20/Pack | - | | - | | - |

DUPLI-KEY® IN DRAWER KEY TRAYS

- Compact and portable, fits easily into most desk drawers and safes
- Convert your office desk drawer into a key control system
- Constructed of molded plastic, making it light and durable
- Accommodates 56 keys - 8 panels with 7 hooks each
- Each hook includes two key tags, a self-locking tag for master keys and a standard snap hook key tag for duplicate keys
- Dimensions: 12" W x 9 7/8" D x 4 3/4" H
- Colour: Putty
- Weight: 6 lbs.

Model No. OG900
Price/Each \$



FILE DRAWER KEY RACKS

- Ideal for secure out-of-the-way key control
- Sturdy, molded plastic, 40-key rack that comes complete with numbered key tags
- Clamps on back allows for easy attachment to rear of standard office file drawers and deep desk drawers
- Dimensions: 12" W x 1 3/4" D x 10" H
- Includes: Numbered key tags, "out key" control tags and key control chart

Model No. OG901
Price/Each \$



SUPER48™ KEY-BAK® KEY CHAINS

- Exclusive quick-draw extension
- Choice of two cable types: Kevlar® or stainless steel, both 48"
- Corrosion-proof polycarbonate casing
- 8 to 10 oz. retraction force
- Large split ring to hold many keys
- Belt clip on back
- Model **ON541** has a leather belt loop
- Ideal for maintenance, janitorial, safety and security personnel



| Model No. | Mfg. No. | Cable Type | Price /Each |
|-----------|----------|-----------------|-------------|
| VE525 | S48 | Stainless Steel | |
| TLZ008 | S48K | Kevlar® | |
| ON541 | S48-LEK | Kevlar® | |

KEY CABINETS & SELF-RETRACTING KEY CHAINS

SELF RETRACTING ID BADGE AND KEY REEL

- Sidekick offers maximum security for keys and badges
- Vinyl ID badge strap and split ring for keys
- Carabiner Diameter: 1- 3/8" (3.5 cm)
- Key Capacity: 5
- ID Badge Capacity: 1
- Twist-free end fitting
- Retraction Force: 0 oz. - 4 oz.
- With Belt Clip



| Model No. | Mfg. No. | Material | Cable Length" | Cable Type | Price /Each |
|-----------|-----------|------------------|---------------|---------------|-------------|
| OP293 | OKBP-0A21 | Zinc Alloy Metal | 24 | Kevlar® Cable | |

MID6 SERIES MID SIZE RETRACTORS #6

- 36" polyester cord
- Tough polycarbonate case
- 6-oz. retraction force
- 360° rotating clip
- 1" nickel plated split ring
- Holds 10 keys
- Belt clip
- Ideal for maintenance, janitorial, safety and security personnel



| Model No. | Mfg. No. | Price /Each |
|-----------|----------|-------------|
| ON543 | 0006-001 | |

SELF RETRACTING KEY CHAINS #487-HD

- 48" stainless steel cable
- Textured chrome front
- Stainless steel mounting bracket
- 8 to 10 oz. retraction force
- 1 1/8" diameter split ring
- Ideal for safety and security personnel



| Model No. | Mfg. No. | Price /Each |
|-----------|----------|-------------|
| ON544 | 0487-002 | |

SECURIT™ KEY-BAK® KEY CHAINS

- 48" Kevlar® cord
- Rugged carabineer makes securing the unit to almost anything easy
- Corrosion-proof polycarbonate casing
- Retraction Force: 8 oz. - 10 oz.



| Model No. | Mfg. No. | Price /Each |
|-----------|----------|-------------|
| TLZ010 | 4888 | |

THE ORIGINAL KEY-BAK®

- Stainless steel chain extends to 24"
- Pocket watch size
- Chrome texture finish
- 2 1/2 oz. weight
- With regular belt clip
- Retraction Force: 0 oz. - 4 oz.



| Model No. | Mfg. No. | Price /Each |
|-----------|----------|-------------|
| TLZ009 | 5 | |

ORIGINAL KEY-BAK® SELF-RETRACTING REELS #485-HDK

- 48" retractable Kevlar® cord
- Chrome front
- 8 to 10 oz. retraction force
- 1 1/8" split ring
- Belt clip
- Ideal for maintenance, janitorial, safety and security personnel



| Model No. | Mfg. No. | Price /Each |
|-----------|----------|-------------|
| ON542 | 0485-821 | |

SELF RETRACTING ID BADGE & KEY REEL WITH WHISTLE

- Sidekick offers maximum security for keys and badges
- Vinyl ID badge strap and split ring for keys
- Carabiner Diameter: 1 3/8" (3.5 cm)
- Key Capacity: 5
- ID Badge Capacity: 1
- FOX40® Classic Safety Whistle
- Three-chamber pea-less whistle (works wet or dry)
- Retraction Force: 0 oz. - 4 oz.
- With Belt Clip



| Model No. | Mfg. No. | Material | Cable Length" | Cable Type | Price /Each |
|-----------|-----------|------------------|---------------|---------------|-------------|
| OP294 | OKBP-0041 | Zinc Alloy Metal | 24 | Kevlar® Cable | |

RETRACTABLE MINI-BAK® ID BADGE HOLDERS

- 36" nylon cord
- Vinyl strap for identification cards (ID)
- Made of ABS plastic
- Tested in excess of 180,000 pulls
- 2 oz. retraction force
- Belt clip
- Ideal for maintenance and janitorial, safety and security personnel, identification and communication



| Model No. | Mfg. No. | Price /Each |
|-----------|----------|-------------|
| ON545 | 0057-005 | |



RETRACTABLE MINI-BAK® KEY RINGS

- 36" nylon cord
- Made of ABS plastic
- 3/4" split ring
- Tested in excess of 180,000 pulls
- 2-oz. retraction force
- Ideal for maintenance and janitorial, safety and security personnel, identification and communication



| Model No. | Mfg. No. | Price /Each |
|-----------|----------|-------------|
| ON546 | 0050-005 | |

CLOCKS

TIME CLOCKS

- Large, easy-to-read analog clock face
- LED display of year, month and date
- Automatic or manual printing
- Print window with light
- Automatically adjusts for Daylight Savings Time, short months, leap years and power outages
- Selectable for 4-digit imprint
- Built-in battery backup



SPECIFICATIONS:

Power Supply: 110/120 AC \pm 10% (50/60 Hz)
Power Consumption: Normal 3 W, Max. 12 W
Ambient Temp.: 14°F - 113°F (-10°C - 45°C)
Humidity: 10% - 90% (no condensation)
Dimensions: 6 3/4" W x 6 1/4" D x 8" H
 (150 mm x 172 mm x 165 mm)
Weight: 6 lbs. (2.7 kg)

| Model No. | Description | Price /Each |
|-----------|-------------|-------------|
| HN140 | English | |

ATOMIC TIME CLOCKS

- Type of Punch Clock: Digital
- Prints in multiple languages including English and French
- Cartridge ribbon for easy change
- Ribbon Colour: Black
- Illuminated print window and guide improves efficiency on time card stamping
- Locking enclosure prevents tampering with settings and reduces time card fraud
- Ability to synchronize to the atomic clock
- Voltage: 100 - 240 V
- Ambient Temperature: -10°C to 45°C
- Humidity: 10% to 90% (no condensation)
- Unit Dimensions: 5.5" W x 6.9" D x 6.1" H

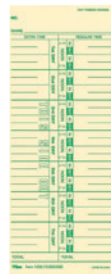
Model No. OP446
Price/Each \$



TIME CLOCK ACCESSORIES

- Card rack is adjusted for standard 8 1/4" long cards
- Fits 25 standard time cards
- Rack is adjustable to accommodate cards of different widths

HA001



HA004



| Model No. | Description | Price /Each |
|-----------|-----------------------------------|-------------|
| HA004 | Card Rack | |
| HA001 | 1000 Time Cards, English | |
| HA020 | 1000 Time Cards, French | |
| HN141 | Replacement Ribbon for Time Clock | |

ATOMIC WALL CLOCK

- Self-adjusting and self-setting atomic clock
- 8 Time Zones: PST, MST, CST, EST, AST, NST, HST, and AKST
- Display: 12 or 24 hour time format with indoor temperature display in Celsius or Fahrenheit
- Easy to read 4"H display
- Option to turn on or off Daylight Savings Time
- Dimensions: 9" W x 1.5" D x 5.7" H
- Case Material: Plastic
- Mount Type: Wall
- Batteries Included: 2 x AA

OP582



MARATHON

| Model No. | Colour | Price /Each |
|-----------|--------|-------------|
| OP582 | Silver | |
| OP583 | Brown | |

WALL CLOCKS

12/24 H BATTERY OPERATED

- 12" diameter round office wall clock
- 12/24 hour
- Glass face
- Black chrome frame

Model No. HT072
Price/Each \$

MATRIX
 INDUSTRIAL PRODUCTS

HT072



BATTERY OPERATED

- 14" diameter quartz clock
- Silent quartz movement with second hand
- Use 1 AA battery
- Glass face
- Chrome frame

Model No. HT071
Price/Each \$

Dainolite

HT071



WALL CLOCK

- Battery operated
- 12-3/4" diameter round office wall clock
- Wall mount
- Plastic face
- Black plastic frame

Model No. OP237
Price/Each \$

MATRIX
 INDUSTRIAL PRODUCTS

OP237



JUMBO DIGITAL WALL CLOCK

- Large 17" display
- Visibility from 30' away
- Displays (indoor) temperature in Celsius or Fahrenheit
- Calendar displays month, date and day of the week
- 12 or 24-hour settings
- This wall clock has an atomic self-adjusting feature that picks up time calibration signals automatically
- Clean, brushed-aluminum-look plastic frame
- Mount on your wall or use the built-in stand to place on a flat surface
- Includes three C batteries

Model No. XD075
Price/Each \$



MARATHON

JUMBO ATOMIC WALL CLOCK

- Self-adjusting and self-setting atomic clock
- 7 Languages: English, Russian, Dutch, French, German, Italian, and Spanish
- Display: 12 or 24 hour time format, day, date, indoor temperature, and humidity
- Displays 5" tall clock digit
- Dimensions: 17" W x 1" D x 11" H
- Case Material: Plastic
- Mount Type: Surface/Wall
- Batteries Included: 4 x AA

OP590



MARATHON

| Model No. | Colour | Price /Each |
|-----------|--------|-------------|
| OP590 | Black | |
| OP591 | Silver | |

DIGITAL DESKTOP CLOCK

- Dimensions: 3.6" W x 1.5" D x 3.6" H
- Power Supply: Battery Operated
- Mount Type: Surface
- Clock Type: Digital
- Case Material: Plastic
- Display: 12 or 24 hour time format, calendar, and temperature
- 7 languages: English, Dutch, French, Spanish, Italian, Danish, and German
- Digit Size: 1.25"
- Batteries Included: 1 x AA
- Depth: 1.5"



OP595



MARATHON

| Model No. | Mfg. No. | Case Colour | Price /Each |
|-----------|------------|-------------|-------------|
| OP595 | CL030050BK | Black | |
| OP596 | CL030050WH | White | |
| OP597 | CL030050BL | Blue | |
| OP598 | CL030050PI | Pink | |

ANALOG DESK ALARM CLOCK

- Dimensions: 3.5" W x 1.5" D x 3.75" H
- Power Supply: Battery Operated
- Mount Type: Surface
- Clock Type: Analog
- Case Material: Plastic
- Batteries Included: 2 x AA
- Depth: 1.5"



MARATHON

| Model No. | Mfg. No. | Case Colour | Price /Each |
|-----------|------------|-------------|-------------|
| OP602 | CL030053BK | Black | |

ATOMIC DESK CLOCK

- Dimensions: 3.7" W x 1.25" D x 3.5" H
- Power Supply: Battery Operated
- Mount Type: Surface
- Clock Type: Digital
- Case Material: Plastic
- Display: Time, day, date, indoor temperature, and humidity
- Digit Size: 1"
- Batteries Included: 2 x AA
- Depth: 1.25"



OP589



MARATHON

| Model No. | Mfg. No. | Case Colour | Price /Each |
|-----------|------------|-------------|-------------|
| OP587 | CL030054BK | Black | |
| OP588 | CL030054WH | White | |
| OP589 | CL030054BL | Blue | |

DIGITAL WALL CLOCK

- Dimensions: 7.625" W x 1.5" D x 7.75" H
- Power Supply: Battery Operated
- Mount Type: Surface, Wall
- Clock Type: Digital
- Case Material: Plastic
- Display: 12 or 24 hour time format, calendar, temperature, and moon phases
- 7 languages: English, Dutch, French, Spanish, Italian, Danish, and German
- Batteries Included: 2 x AA



OP593



MARATHON

| Model No. | Mfg. No. | Case Colour | Price /Each |
|-----------|------------|-------------|-------------|
| OP593 | CL030049WH | White | |
| OP594 | CL030049BK | Black | |

LED ALARM CLOCK

- Dimensions: 6" W x 3.25" D x 2" H
- Power Supply: Battery Operated, Plug-in
- Mount Type: Surface
- Clock Type: Digital
- Case Material: Plastic
- Display: 12 or 24 hour time format
- Display Modes: High, low or off
- Digit Size: 1"
- Batteries Included: 2 x AA



MARATHON

| Model No. | Mfg. No. | Case Colour | Price /Each |
|-----------|------------|-------------|-------------|
| OP599 | CL030055BK | Black | |

JUMBO DIGITAL CLOCK

- Dimensions: 16.5" W x 2" D x 10.5" H
- Power Supply: Battery Operated
- Mount Type: Wall
- Clock Type: Digital
- Case Material: Plastic
- Display: 12 or 24 hour time format, day, date, temperature, and humidity
- 4 languages: English, German, French, and Spanish
- Batteries Included: 3 x C



MARATHON

| Model No. | Mfg. No. | Case Colour | Price /Each |
|-----------|----------|-------------|-------------|
| OP592 | CL030040 | Silver | |

JUMBO ANALOG WALL CLOCK

- Dimensions: 11.75" W x 2" D x 11.75" H
- Power Supply: Battery Operated
- Mount Type: Wall
- Clock Type: Analog
- Case Material: Plastic
- Batteries Included: 1 x AA and 2 x C
- Depth: 2"



OP603



MARATHON

| Model No. | Mfg. No. | Case Colour | Dial Colour | Price /Each |
|-----------|----------------|-------------|-------------|-------------|
| OP603 | CL030057BK-BK1 | Black | Black | |
| OP604 | CL030057WH-WH1 | White | White | |

DIGITAL WALL CLOCK

- Dimensions: 9.5" W x 2.5" D x 6.3" H
- Power Supply: Battery Operated
- Mount Type: Wall
- Clock Type: Digital
- Case Material: Plastic
- Display: Time, day, month, date and indoor temperature and indoor humidity
- 6 Time Zones: Pacific, Mountain, Central, Eastern, Atlantic, and Newfoundland
- 7 Languages: English, Danish, Dutch, French, German, Italian, and Spanish
- Batteries Included: 2 x C



OP584



MARATHON

| Model No. | Mfg. No. | Case Colour | Price /Each |
|-----------|------------|-------------|-------------|
| OP584 | CL030052BK | Black | |
| OP585 | CL030052WH | White | |
| OP586 | CL030052GG | Silver | |

ALL-WEATHER NOTEBOOKS

RITE IN THE RAIN® POCKET TOP-SPIRAL NOTEBOOK

- Compact and flexible enough to slip into a pocket
- Notebook will resist sweat, rain, mud, snow, oil, grease and the wear-and-tear of daily use
- Impact-resistant Wire-O binding won't lose its shape
- Durable PolyDura cover defends against weather and wear
- Cover Material: Soft Cover
- Number of Pages: 100
- Binding Type: Spiral



OQ409

RITE IN THE RAIN® SIDE-SPIRAL NOTEBOOK

- Impact-resistant PolyDura cover protects from scratches and stains
- Notebook will resist sweat, rain, mud, snow, oil, grease and the wear-and-tear of daily use
- Cover Material: Soft Cover
- Binding Type: Spiral



OQ357

| Model No. | Mfg. No. | Dimensions | | | Cover Colour | Paper Colour | Price /Each |
|-----------|----------|------------|---|----|--------------|--------------|-------------|
| | | L" | x | W" | | | |
| NKF437 | 135 | 5 | x | 3 | Yellow | White | |
| OQ404 | 935 | 5 | x | 3 | Green | Green | |
| OQ405 | 935T | 5 | x | 3 | Beige | Tan | |
| OQ406 | 735 | 5 | x | 3 | Black | Grey | |
| NKF438 | 146 | 6 | x | 4 | Yellow | White | |
| OQ407 | 946 | 6 | x | 4 | Green | Green | |
| OQ408 | 946T | 6 | x | 4 | Beige | Tan | |
| OQ409 | 746 | 6 | x | 4 | Black | Grey | |

| Model No. | Mfg. No. | Dimensions | | | Cover Colour | Number of Pages | Price /Each |
|-----------|----------|------------|---|-------|--------------|-----------------|-------------|
| | | L" | x | W" | | | |
| NKF439 | 353 | 6 | x | 4 | Yellow | 64 | |
| NKF440 | 373 | 7 | x | 4-5/8 | Yellow | 64 | |
| OQ410 | 973 | 7 | x | 4-5/8 | Green | 64 | |
| OQ411 | 973T | 7 | x | 4-5/8 | Beige | 64 | |
| OQ412 | 773 | 7 | x | 4-5/8 | Black | 64 | |
| OQ357 | 373-MX | 11 | x | 8-1/2 | Yellow | 84 | |
| OQ376 | 973-MX | 11 | x | 8-1/2 | Green | 84 | |
| OQ377 | 973T-MX | 11 | x | 8-1/2 | Beige | 84 | |
| OQ378 | 773-MX | 11 | x | 8-1/2 | Black | 84 | |

RITE IN THE RAIN® MEMO NOTEBOOK

- Notebook will resist sweat, rain, mud, snow, oil, grease and the wear-and-tear of daily use
- Field-Flex cover material allows for utmost notebook flexibility
- Page edges rounded in corners and are flush with cover
- Paper tough enough to withstand the harshest and wettest conditions yet can be torn like heavy paper
- Cover Material: Soft Cover
- Number of Pages: 112
- Binding Type: Perfect
- Dimensions: 2-7/8" W x 5" L



NKF442

RITE IN THE RAIN® MINI NOTEBOOK

- Compact, flexible enough to slip into a pocket, and has a durable cover that defends against weather and wear
- Notebook will resist sweat, rain, mud, snow, oil, grease and the wear-and-tear of daily use
- Qty/Pkg: 3
- Cover Material: Soft Cover
- Binding Type: Stapled



OQ382

| Model No. | Mfg. No. | Cover Colour | Price /Each |
|-----------|----------|--------------|-------------|
| NKF442 | 374-M | Yellow | |
| OQ416 | 954 | Green | |
| OQ417 | 954T | Beige | |
| OQ418 | 754 | Black | |

| Model No. | Mfg. No. | Dimensions | | | Cover Colour | Number of Pages | Price /Each |
|-----------|----------|------------|---|-------|--------------|-----------------|-------------|
| | | L" | x | W" | | | |
| OQ358 | 371FX-M | 4-5/8 | x | 3-1/4 | Yellow | 24 | |
| OQ379 | 971FX-M | 4-5/8 | x | 3-1/4 | Green | 24 | |
| OQ380 | 971TFX-M | 4-5/8 | x | 3-1/4 | Beige | 24 | |
| OQ381 | 771FX-M | 4-5/8 | x | 3-1/4 | Black | 24 | |
| OQ359 | 371FX | 7 | x | 4-5/8 | Yellow | 48 | |
| OQ382 | 971FX | 7 | x | 4-5/8 | Green | 48 | |
| OQ383 | 971TFX | 7 | x | 4-5/8 | Beige | 48 | |
| OQ384 | 771FX | 7 | x | 4-5/8 | Black | 48 | |

RITE IN THE RAIN® ALL-WEATHER PENS

- Performs in temperatures from -30°F to 250°F

| Model No. | Mfg. No. | Type | Grip | Ink Colour | Point Size mm | Price /Each |
|-----------|----------|-------------------|----------------|------------|---------------|-------------|
| NKF443 | 97 | Retractable Pen | Non Rubberized | Black | 0,8 | |
| OQ434 | 93K | Retractable Pen | Rubberized | Black | 0,8 | |
| OQ355 | 37R | Pen Refill | - | Black | 0,8 | |
| OQ371 | 97B | Retractable Pen | Non Rubberized | Blue | 0,8 | |
| OQ435 | 93B | Retractable Pen | Rubberized | Blue | 0,8 | |
| OQ372 | 47R | Pen Refill | - | Blue | 0,8 | |
| NKF445 | YE99 | Mechanical Pencil | Non Rubberized | - | - | |



NKF443



OQ372



NKF445



OQ435



RITE IN THE RAIN® HARD COVER NOTEBOOK

- Fabrikoid case-bound books are designed to resist sweat, rain, mud, snow, oil, grease and the extreme wear-and-tear of daily use
- Pages sewn-in for perfect binding
- Number of Pages: 160
- Binding Type: Perfect



RITE IN THE RAIN® POCKET NOTEBOOK KIT

- Notebook cover made from Cordura® fabric holds 4 writing tools and features zippered closure
- Yellow and Black Notebook Kits include All-Weather Black Pen & Black Notebook Pouch
- Green and Beige Notebook Kits include All-Weather Black Pen & Tan Notebook Pouch
- Number of Pages: 100
- Binding Type: Spiral



| Model No. | Mfg. No. | Dimensions L" x W" | Cover W" | Paper Colour | Colour | Price /Each |
|-----------|----------|--------------------|----------|--------------|--------|-------------|
| QO360 | 370F | 7-1/4 x 4-5/8 | 4-5/8 | Yellow | White | |
| QO385 | 970F | 7-1/4 x 4-5/8 | 4-5/8 | Green | Green | |
| QO386 | 970TF | 7-1/4 x 4-5/8 | 4-5/8 | Beige | Tan | |
| QO387 | 770F | 7-1/4 x 4-5/8 | 4-5/8 | Black | Grey | |
| QO361 | 370F-LG | 8-3/4 x 6-3/4 | 6-3/4 | Yellow | White | |
| QO388 | 970F-LG | 8-3/4 x 6-3/4 | 6-3/4 | Green | Green | |
| QO389 | 970TF-LG | 8-3/4 x 6-3/4 | 6-3/4 | Beige | Tan | |
| QO390 | 770F-LG | 8-3/4 x 6-3/4 | 6-3/4 | Black | Grey | |
| QO362 | 370F-MX | 11 x 8-1/2 | 8-1/2 | Yellow | White | |
| QO391 | 970F-MX | 11 x 8-1/2 | 8-1/2 | Green | Green | |
| QO392 | 970TF-MX | 11 x 8-1/2 | 8-1/2 | Beige | Tan | |
| QO393 | 770F-MX | 11 x 8-1/2 | 8-1/2 | Black | Grey | |

| Model No. | Mfg. No. | Dimensions L" x W" | Cover W" | Paper Colour | Colour | Price /Each |
|-----------|----------|--------------------|----------|--------------|--------|-------------|
| QO364 | 135B-KIT | 5 x 3 | 3 | Yellow | White | |
| QO397 | 935-KIT | 5 x 3 | 3 | Green | Green | |
| QO398 | 935T-KIT | 5 x 3 | 3 | Beige | Tan | |
| QO399 | 735B-KIT | 5 x 3 | 3 | Black | Grey | |
| QO365 | 146B-KIT | 6 x 4 | 4 | Yellow | White | |
| QO400 | 946-KIT | 6 x 4 | 4 | Green | Green | |
| QO401 | 946T-KIT | 6 x 4 | 4 | Beige | Tan | |
| QO402 | 746B-KIT | 6 x 4 | 4 | Black | Grey | |

RITE IN THE RAIN® TOP-BOUND MEMO

- Field-Flex cover material allows for utmost notebook flexibility
- Paper tough enough to withstand the harshest and wettest conditions yet can be torn like heavy paper
- Page edges rounded in corners and are flush with cover
- Cover Material: Soft Cover
- Binding Type: Perfect
- Number of Pages: 100
- Dimensions: 5" L x 3-1/4" W



RITE IN THE RAIN® BOUND NOTEBOOK

- Notebook will resist sweat, rain, mud, snow, oil, grease and the wear-and-tear of daily use
- Page edges rounded in corners and are flush with cover
- Field-Flex cover material allows for utmost notebook flexibility
- Paper tough enough to withstand the harshest and wettest conditions yet can be torn like heavy paper
- Number of Pages: 128
- Binding Type: Perfect
- Dimensions: 7-1/4" L x 4-5/8" W



| Model No. | Mfg. No. | Cover Colour | Paper Colour | Price /Each |
|-----------|----------|--------------|--------------|-------------|
| QO363 | 378 | Yellow | White | |
| QO394 | 978 | Green | Green | |
| QO395 | 978T | Beige | Tan | |
| QO396 | 778 | Black | Grey | |

| Model No. | Mfg. No. | Cover Colour | Paper Colour | Price /Each |
|-----------|----------|--------------|--------------|-------------|
| NKF441 | 374 | Yellow | White | |
| QO413 | 974 | Green | Green | |
| QO414 | 974T | Beige | Tan | |
| QO415 | 774 | Black | Grey | |

VELCRO® BRAND STICKY BACK ROLLS

- Both Hook and Loop components supplied in package
- Hook and Loop Material: Nylon
- Applications: Apparel, office folders, stationery, rigid packaging and trays, medical equipment



| Model No. | Mfg. No. | Width" | Length' | Colour | Price /Each |
|-----------|----------|--------|---------|--------|-------------|
| OP641* | 90677C | 3/4 | 5 | Black | |
| OP642* | 90678C | 3/4 | 5 | White | |
| OP787* | 90081C | 3/4 | 15 | Black | |
| OP788* | 90082C | 3/4 | 15 | White | |
| OP764 | 91789 | 3/4 | 15 | Black | |
| OP765 | 91790 | 3/4 | 15 | White | |

*Ideal for smooth indoor surfaces

VELCRO® BRAND ONE-WRAP®

- Ideal for other applications requiring a strong, durable, adjustable and reusable self-engaging fastener
- Self-engaging
- Strong, reusable ONE-WRAP® fasteners feature hook and loop laminated back to back without glue, so there's no chemical residue
- Hook Material: Polypropylene
- Loop Material: Nylon
- Applications: Cable management, medical equipment bundling and materials handling



| Model No. | Mfg. No. | Width" | Length | Colour | Quantity Per Pack | Price /Each |
|--------------|----------|--------|---------|--------------|-------------------|-------------|
| TAPE | | | | | | |
| OP622 | 189755 | 1/2 | 25 yds | Black | - | |
| OQ529 | 170015 | 1/2 | 25 yds | White | - | |
| OQ530 | 174043 | 1/2 | 200 yds | Black | - | |
| OP623 | 189590 | 1 | 25 yds | Black | - | |
| ROLLS | | | | | | |
| OP628 | 90340C | 3/4 | 12' | Black | - | |
| OQ540 | 91808 | 3/4 | 12' | White | - | |
| OP629 | 91372C | 1 1/2 | 30' | Black | - | |
| TIES | | | | | | |
| OP630 | 90438C | 1/2 | 8" | Multicolour* | 5 | |
| OP627 | 90927C | 1/2 | 8" | Black | 25 | |
| OP631 | 90700C | 7/8 | 23" | Black | 3 | |

*Colours included: Blue, green, yellow, orange and red

VELCRO® BRAND TRADE RANGE HOOK 88/LOOP 1000

- Trade Range Combo of hook & loop straps and tape features newly-designed packaging that allows professionals to easily measure and cut based on their needs
- Designed for indoor affixing applications, this powerful fastener features a high-tack acrylic-based adhesive
- Box includes dispensing slot and 1-foot measuring tool
- Material: Nylon



| Model No. | Mfg. No. | Width" | Length Yards | Colour | Price /Each |
|-----------|----------|--------|--------------|--------|-------------|
| OQ516 | 259705 | 1 | 25 | Black | |
| OQ517 | 259706 | 1 1/2 | 25 | Black | |
| OQ518 | 259707 | 2 | 25 | Black | |
| OQ519 | 259708 | 1 | 25 | White | |
| OQ520 | 259709 | 1 1/2 | 25 | White | |
| OQ521 | 259710 | 2 | 25 | White | |

VELCRO® BRAND SEW-ON TAPE

- Easy to sew & easy to fasten
- An adjustable alternative to snaps, buttons, zippers, hooks & eyes
- Machine washable and dry cleanable
- Base/Hook and Loop Material: Nylon
- Ideal for applications requiring high cycle life closure
- Applications: Apparel, cable management, panels, seat trim, aviation, furnishing and straps



| Model No. | Mfg. No. | Width" | Length' | Colour | Price /Each |
|--------------|----------|--------|---------|--------|-------------|
| ROLL* | | | | | |
| OP643 | 91897 | 1 1/2 | 15 | Black | |
| OP644 | 91898 | 1 1/2 | 15 | White | |
| OP786 | 91805 | 3/4 | 30 | Black | |
| OP785 | 91806 | 3/4 | 30 | White | |

*Both Hook and Loop components supplied in package

| Model No. | Mfg. No. | Width" | Length Yards | Colour | Suggested Paired Component | Price /Each |
|-----------------------|----------|--------|--------------|--------|----------------------------|-------------|
| HOOK 88 TAPE | | | | | | |
| OP774 | 190336 | 3/4 | 25 | White | Loop 1000 | |
| OP778 | 190528 | 1 | 25 | White | Loop 1000 | |
| LOOP 1000 TAPE | | | | | | |
| OP772 | 190228 | 3/4 | 25 | White | Hook 88 | |
| OP776 | 190388 | 1 | 25 | White | Hook 88 | |

VELCRO® BRAND LOW PROFILE TAPE

- Hook and Loop Material: Nylon
- Applications: Outerwear, orthopedic bracing, medical equipment, stationery, wall hangings, sporting equipment



| Model No. | Mfg. No. | Width" | Length Yards | Colour | Suggested Paired Component | Price /Each |
|-----------------------|----------|--------|--------------|--------|----------------------------|-------------|
| HOOK 805 TAPE | | | | | | |
| OP760 | 128659 | 1 | 25 | Black | Loop 3610 | |
| LOOP 3610 TAPE | | | | | | |
| OP761 | 151395 | 1 | 25 | Black | Hook 805 | |

VELCRO® BRAND TAPE

- Ideal for other applications requiring high cycle life closure
- Excellent for keeping things organized and connected
- Hook and Loop Material: Nylon
- Applications: Apparel, cable management, panels, seat trim, aviation, furnishing and straps



| Model No. | Mfg. No. | Width" | Length Yards | Colour | Suggested Paired Component | Price /Each |
|-----------------------|----------|--------|--------------|--------|----------------------------|-------------|
| HOOK 88 TAPE | | | | | | |
| OP612 | 158501 | 3/4 | 25 | Black | Loop 1000 | |
| OP769 | 158502 | 3/4 | 25 | White | Loop 1000 | |
| OP614 | 158499 | 1 | 25 | Black | Loop 1000 | |
| OP768 | 158500 | 1 | 25 | White | Loop 1000 | |
| OP616 | 158495 | 2 | 25 | Black | Loop 1000 | |
| LOOP 1000 TAPE | | | | | | |
| OP613 | 158511 | 3/4 | 25 | Black | Hook 88 | |
| OP771 | 158512 | 3/4 | 25 | White | Hook 88 | |
| OP615 | 158509 | 1 | 25 | Black | Hook 88 | |
| OP770 | 158510 | 1 | 25 | White | Hook 88 | |
| OP617 | 158505 | 2 | 25 | Black | Hook 88 | |

VELCRO® BRAND INDUSTRIAL STRENGTH

- Both Hook and Loop components supplied in package
- Low profile
- Easy to use
- 30% thinner than regular hook and loop
- Heavy-duty and water resistant
- Designed for both indoor and outdoor use
- Features a molded "plastic" hook for significantly more holding power than regular woven hook and loop
- Base Material: Nylon
- Applications: Apparel, office folders, stationery, hanging tools, wall hangings, rigid packaging and trays



VELCRO® BRAND VELCOIN® TAPE

- Peel and stick coins provide VELCRO® Brand convenience in a precut fastener
- Base Material: Nylon
- Applications: Apparel, office folders, stationery, rigid packaging and trays



| Model No. | Mfg. No. | Diameter" | Coins Per Roll | Colour | Suggested Paired Component | Price /Each |
|-----------------------|----------|-----------|----------------|--------|----------------------------|-------------|
| HOOK 88 TAPE | | | | | | |
| OP618 | 157586 | 1/2 | 1440 | Black | Loop 1000 | |
| OP620 | 157654 | 3/4 | 1028 | Black | Loop 1000 | |
| OP766 | 157658 | 3/4 | 1028 | White | Loop 1000 | |
| LOOP 1000 TAPE | | | | | | |
| OP619 | 157587 | 1/2 | 1440 | Black | Hook 88 | |
| OP621 | 157655 | 3/4 | 1028 | Black | Hook 88 | |
| OP767 | 157659 | 3/4 | 1028 | White | Hook 88 | |



| Model No. | Mfg. No. | Width" | Length | Colour | Quantity Per Pack | Price /Each |
|---------------|----------|--------|--------|--------|-------------------|-------------|
| STRIPS | | | | | | |
| OP632 | 90199C | 2 | 4" | Black | 2 | |
| OP633 | 90200C | 2 | 4" | White | 2 | |
| TAPE | | | | | | |
| OP634 | 90593C | 2 | 4' | Black | 1 | |
| OP635 | 90595C | 2 | 4' | White | 1 | |
| OP636 | 90197C | 2 | 15' | Black | 1 | |
| OP637 | 90198C | 2 | 15' | White | 1 | |

ACRYLIC ADHESIVE 72 VELCRO® BRAND TAPE

- Peel and stick adhesive back
- Ideal for other applications requiring high cycle life closure
- Excellent for keeping things organized and connected
- Acrylic adhesive is formulated for high temperature performance and superior bond strength
- Hook and Loop Material: Nylon
- Applications: Apparel, cable management, panels, seat trim, aviation, furnishing and straps



| Model No. | Mfg. No. | Width" | Length Yards | Colour | Suggested Paired Component | Price /Each |
|-----------------------|----------|--------|--------------|--------|----------------------------|-------------|
| HOOK 88 TAPE | | | | | | |
| OQ001 | 191051 | 1 | 25 | Black | Loop 1000 | |
| OP998 | 191033 | 1 | 25 | White | Loop 1000 | |
| LOOP 1000 TAPE | | | | | | |
| OP903 | 190984 | 1 | 25 | Black | Hook 88 | |
| OP999 | 190959 | 1 | 25 | White | Hook 88 | |

VELCRO® BRAND ONE-WRAP® CABLE MANAGEMENT TAPE

- VELCRO® Brand ONE-WRAP® for Fibre Optic Cable match cable jacket to enhance identification and installation appearance
- Strong, reusable fasteners feature hook & loop laminated back-to-back without use of adhesives, so there's no chemical residue
- Ideal for cable management applications; enterprise and campus networks, data centers, long-haul networks & broadband networks
- Will not damage, pinch fibers or introduce unwanted insertion loss
- Can be cut to length depending on application or project
- Hook Material: Polypropylene
- Loop Material: Nylon



| Model No. | Mfg. No. | Colour | Width" | Length yds | Price /Each |
|-----------|----------|--------|--------|------------|-------------|
| OQ532 | 176073 | Orange | 5/8 | 25 | |
| OQ533 | 126938 | Aqua | 5/8 | 25 | |
| OQ534 | 126928 | Violet | 5/8 | 25 | |
| OQ535 | 126887 | Yellow | 5/8 | 25 | |
| OQ536 | 176067 | Orange | 3/4 | 25 | |
| OQ537 | 126937 | Aqua | 3/4 | 25 | |
| OQ538 | 173829 | Violet | 3/4 | 25 | |
| OQ539 | 126886 | Yellow | 3/4 | 25 | |



VELCRO® BRAND STICKY BACK COINS

- Peel and stick coins provide VELCRO® Brand convenience in a precut fastener
- Base Material: Nylon
- Applications: Apparel, office folders, stationery, rigid packaging and trays



| Model No. | Mfg. No. | Diameter" | Colour | Coins Per Pack | Price /Each |
|-----------|----------|-----------|--------|----------------|-------------|
| OP780 | 90089C | 5/8 | Black | 75 | |
| OP781 | 90090C | 5/8 | White | 75 | |
| OP782 | 91823C | 3/4 | Black | 200 | |
| OP783 | 91824C | 3/4 | White | 200 | |

VELCRO® BRAND LOGISTRAP™

- Secure pallet boxes, sleeve packs and collapsible containers
- Reusable straps are cost effective and reduce waste
- Easily and quickly secures goods to a pallet
- Made with VELCRO® brand woven hook and loop
- Style: Hook and Loop
- Working Load Limit: 225 lbs. (102 kg)
- Base material: Nylon with metal buckle
- Applications: Distribution centers, warehouses and logistics



| Model No. | Mfg. No. | Width" | Length' | Colour | Price /Each |
|-----------|----------|--------|---------|--------|-------------|
| PF734 | 430034 | 2 | 16.4 | Orange | |
| OQ528 | 430033 | 2 | 23 | Blue | |

GENERAL OFFICE SUPPLIES

PERMANENT MARKERS

SHARPIE® LIQUID TIP

- Instant drying, writes on all surfaces
- Waterproof



| Model No. | Tip | Colour | Price /Each |
|-----------|--------|--------|-------------|
| OB947 | Chisel | Black | |

#15 SHARPIE FINE

- Fine point marker
- High visibility ink
- 6 dozen/case
- Large ink supply
- Extra tough tip that won't spread or mush
- Bold, fine tips makes impressive marks
- Fade and water resistant • Ink dries quickly



| Model No. | Colour | Price /Each |
|---------------------------|--------|-------------|
| SHARPIE® FINE | | |
| PA393 | Black | |
| PA395 | Blue | |
| PA396 | Green | |
| PA397 | Purple | |
| PA392 | Red | |
| PA394 | Orange | |
| ULTRAFINE SHARPIE® | | |
| OTJ964 | Black | |
| OTJ965 | Red | |
| OTJ966 | Blue | |
| SUPER SHARPIE® | | |
| OD376 | Black | |
| OD377 | Red | |
| OD378 | Blue | |

SHARPIE® INDUSTRIAL MARKERS

- Resists chemicals, light and heat up to 500°F
- Writes on glass, metal, greasy parts
- For industrial use
- Fine point
- Black



Model No. OTJ874 Price/Each \$

LUMOCOLOR® PERMANENT MARKERS

- Dry Safe ink: can be left uncapped for days without drying out
- Fine point
- Black



Model No. OB386 Price/Each \$

MARKS-A-LOT® PERMANENT MARKERS

- Chisel tip
- Comfortable grip
- Water-resistant, smear-proof
- Writes on any surface
- Non-toxic
- Black



Model No. OD458 Price/Each \$

AVERY HI-LITER®

- Replaces underlining
- Long lasting
- Quick drying
- Available in 4 colours



| Yellow | Pink | Model No. | Blue | Green | Type | Price /Each |
|--------|-------|-----------|-------|-------|-------------|-------------|
| OB939 | OB940 | OB941 | OB942 | | Fluorescent | |

BALLPOINT PENS

"HI-TECPOINT V" ROLLING BALLPOINT PENS

- Liquid ink
- Ultra-fine point



| Model No. | Colour | Price/Each |
|-----------|--------|------------|
| OT1657 | Blue | |
| OT1658 | Black | |
| OT1659 | Green | |
| OT1662 | Red | |

BALLPOINT PENS

- Box of 12



| | Blue Model No. | Black Model No. | Price /Box |
|--------------|----------------|-----------------|------------|
| Fine point | OT1152 | OT1154 | |
| Medium point | OT1148 | OT1150 | |

BALLPOINT PENS

- Rubberized grip



| | Fine Point Model No. | Black Medium Point Model No. | Price /Each |
|-------------|----------------------|------------------------------|-------------|
| Regular | - | OT1203 | |
| Retractable | OK596 | OT1209 | |

PAPER MATE® INKJOY™ 3000RT PEN

- Features Paper Mate's revolutionary Injoy™ writing system for effortless writing
- Rubberized grip for optimal comfort
- Style: Retractable
- Grip: Rubberized
- Point: Medium
- Point Size: 1 mm



| Model No. | Colour | Price/Each |
|-----------|--------|------------|
| OP971 | Blue | |
| OP972 | Black | |
| OP973 | Red | |

OMNICHROM 108

- All purpose marking pencil
- Writes on virtually any surface, ie. glass, plastics, wood, polished stone and metal
- Lines can be removed from glossy surface without leaving a trace
- Non-penetrating leads are water-soluble and highly break resistant
- Available in 6 brilliant colours



Priced per Pencil

| Model No. | Lead Color | Price /Each |
|-----------|------------|-------------|
| OB606 | White | |
| OB607 | Red | |
| OB609 | Black | |
| OB610 | Yellow | |
| OB611 | Blue | |

PAPER MATE® HB CANADIANA PENCIL

- Quantity per Pack: 24
- Type: HB #2 Pencil
- Features a smooth lead core that sharpens to a fine, exact point for accurate writing
- Point Size: HB
- Available in 6 brilliant colours



MIRADO PENCILS

- Box of 12



| Model No. | Degree of Hardness | Price /Box |
|-----------|--------------------|------------|
| OP976 | | |
| OC957 | HB | |

GENERAL OFFICE SUPPLIES

CLIPBOARDS

Masonite clipboard available for letter or legal size.

OF245

| Model No. | Description | Price /Each |
|-----------|----------------------|-------------|
| OF245 | 9" x 12" Letter Size | |
| OF246 | 9" x 15" Legal Size | |



SHEET HOLDERS

- Side hinged form holder with steel clamp
- Closes like a box to protect your documents
- Storage compartment on the side
- 30-sheet capacity
- Aluminum
- Letter size

Model No. OE210
Price/Each \$



SHEET PROTECTORS

- Copysafe™ top loading sheet protectors feature a reinforced 3 hole ring edge
- Holds 8 1/2" x 11" in non-glare polypropylene
- Heavy weight, 100/pkg.

Model No. OC376
Price/Each \$



VINYL BINDERS

- Round "No Gap" rings prevent gapping and misalignment
- Two inside pockets with pocket guard to secure documents
- Label holder on spine
- Letter size



| Size" | Black | Blue | Green | Red | Grey | Price/Each |
|-------|-------|--------|-------|-------|-------|------------|
| 1 | OT077 | VEN052 | OT080 | OB780 | OT079 | |
| 2 | OT091 | OT092 | OT094 | OT096 | OT093 | |
| 3 | OT101 | OT103 | OJ986 | OT102 | N/A | |

EXPANDING FILES

- Red fibre
- Elastic cord closing flap
- Without compartments

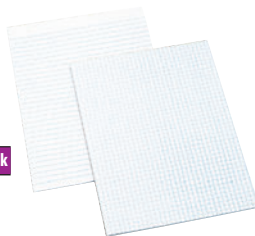


| Model No. | Document Size | Expansion Size | Price/Each |
|-----------|---------------|----------------|------------|
| OJ870 | Letter | 3 1/2" | |
| OJ868 | Legal | 3 1/2" | |
| OJ874 | Letter | 5 1/4" | |
| OJ872 | Legal | 5 1/4" | |

WHITE PAPER PADS

- 96 sheets per pad
- Five pads per package

| Model No. | Size | Price/Pack |
|-----------|------------------------------|------------|
| OTF720 | Letter, Ruled 5/16" | |
| OTF719 | Letter, Ruled 1/4" | |
| OK913 | Legal, Ruled 5/16" | |
| OK920 | Letter, Quadruled, 4 sq./in. | |
| OK919 | Legal, Quadruled, 4 sq./in. | |



MULTI PURPOSE COPY PAPER

For everyday use on all black and white equipment using plain paper. Recommended for copiers, plain paper faxes and laser printers. Acid free for long life. 20 lbs., 92 bright. 500/Pkg.



| Model No. | Dimensions | Colour | Price/Each |
|-----------|-------------------------|--------|------------|
| OA316 | Letter 8 1/2" W x 11" L | White | |
| OC219 | Legal 8 1/2" W x 14" L | White | |

EARTHCHOICE® OFFICE PAPER

- Multi purpose copy paper
- Made with strict environmental concerns
- 92 bright
- 500 sheets/pack
- 20 lbs.
- FSC certified and endorsed by the Rainforest Alliance



| Model No. | Dimensions | Colour | Price/Each |
|-----------|-------------------------|--------|------------|
| OJ956 | Letter 8 1/2" W x 11" L | White | |
| OJ957 | Legal 8 1/2" W x 14" L | White | |

FILE FOLDERS

- Other colours available



Priced per Box of 100

| Description | Model No. Letter | Price /Box | Model No. Legal | Price /Box |
|--------------------|------------------|------------|-----------------|------------|
| 1/2 CUT REVERSIBLE | | | | |
| 9 1/2 pt Manila | OB762 | | OB761 | |
| 9 1/2 pt Ivory | OB763 | | OB764 | |
| 10 1/2 pt Ivory | OB765 | | OB766 | |
| STRAIGHT CUT | | | | |
| 9 1/2 pt Manila | OTD040 | | OTD243 | |
| 10 1/2 pt Ivory | OTD056 | | OTD258 | |

SELF-ADHESIVE NOTEPADS

- Removable self stick notes adhere to almost any surface
- 100 sheets/pad
- Colour: Yellow
- 12 pads/pack



| Model No. | Description | Price /Pack |
|-----------|-------------------------------|-------------|
| OC140 | 3" x 3" Highland Note Pad | |
| OC141 | 1 1/2" x 2" Highland Note Pad | |

RECYCLED POST-IT® SELF-ADHESIVE NOTEPADS

- 100% recycled content
- 55-95% post-consumer waste
- Pads of 100 sheets
- Available in yellow or sun washed pier colours

| Model No | Description | Price /Pack |
|-----------------|------------------------------|-------------|
| 16 PADS/PACKAGE | | |
| OK994 | 3" x 3"- Yellow | |
| OK993 | 3" x 3"- Sun-Washed Pier | |
| OK996 | 3" x 5"- Yellow | |
| OK995 | 3" x 5"- Sun-Washed Pier | |
| 24 PADS/PACKAGE | | |
| OK992 | 1 1/2" x 2"- Yellow | |
| OK991 | 1 1/2" x 2"- Sun-Washed Pier | |



GENERAL OFFICE SUPPLIES



CALCULATORS

CASIO DUAL-POWER CALCULATORS

- 8 digit display
- Dual power
- Hard case included

Model No. OD599
Price/Each \$



METRIC CALCULATOR

- Power Supply: Solar & Battery
- Display Digits: 10
- Display Type: LCD
- Calculator Type: Flat

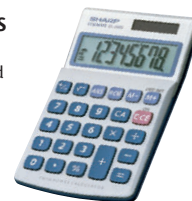
Model No. OM900
Price/Each \$



POCKET CALCULATORS

- 8-digit display
- Solar and battery powered

Model No. OTK387
Price/Each \$



OFFICE TAPE & DISPENSERS

OL205



OC147

DESKTOP TAPE DISPENSERS

- Anti-skid bottom
- 1" core
- Colour: Black

| Model No. | Description | Wt. lbs. | Price /Each |
|-----------|----------------------------|----------|-------------|
| OL205 | 1/2" (12 mm), 3/4" (19 mm) | 2 | |

Straight Scissors

- All purpose economical scissors with stainless steel blades
- Plastic handles
- Ideal for light-duty cutting.



| Model No. | Overall Length" | Cut Length" | Price /Each |
|-----------|-----------------|-------------|-------------|
| OE018 | 8 | 3 1/4 | |

ROTEX RUBBER BANDS

- Packed 1/4 lb. per box
- 85% rubber content



Priced per Box

| Model No. | Mfg. No. | Dimensions L" x W" | Price /Each |
|-----------|----------|--------------------|-------------|
| OB960 | 16 | 2 1/2 x 1/16 | |
| OB962 | 19 | 3 1/2 x 1/16 | |
| OB965 | 32 | 3 x 1/8 | |
| OB966 | 33 | 3 1/2 x 1/8 | |
| OB970 | 64 | 3 1/2 x 1/4 | |

FOLDBACK CLIPS

- Box of 12



| Model No. | Size | Capacity | Price/Each |
|-----------|--------|----------|------------|
| OG978 | 1/2" | 1/4" | |
| OT308 | 3/4" | 5/16" | |
| OT309 | 1" | 3/8" | |
| OT313 | 1 1/4" | 5/8" | |
| OT310 | 1 5/8" | 7/8" | |
| OT314 | 2" | 1" | |

SWINGLINE® SMARTTOUCH™ 2-HOLE PUNCH

- Soft grip handle and durable metal construction
- Features an edge guide for better punch alignment
- Sheet Capacity: 20
- Hole Diameter: 9/32"
- Material: Metal
- Colour: Black and Grey
- Dimensions: 2.25" L x 5.75" W x 4.25" H
- 8.5" to 11" extendable paper guide included

Model No. OP827
Price/Each \$

Swingline®



SWINGLINE® SMARTTOUCH™ 3-HOLE PUNCH

- Soft grip handle and durable metal construction
- Features an built-in ruler and edge guide for better punch alignment
- Sheet Capacity: 20
- Hole Diameter: 9/32"
- Material: Metal
- Colour: Black and Grey
- Dimensions: 12.25" L x 4.75" W x 2.5" H

Model No. OP828
Price/Each \$

Swingline®



LEFT & RIGHT HANDED CORRECTION TAPE

- 180° swivel head for left and right handed application
- One line
- Disposable
- 5 mm x 5 m

Model No. OTE427
Price/Each \$



LIQUID PAPER

- White, 18ml.

| Model No. | Description | Price /Each |
|-----------|-------------|-------------|
| OB951 | Regular | |



CORRECT-IT CORRECTION TAPE

- Disposable
- 4.2 mm x 8.5 m.

Model No. OF919
Price/Each \$



HEAVY-DUTY 390 STAPLERS

- Jam clearing feature
- Throat depth adjusts to 2 5/8"
- 160-sheet capacity

| Model No. | Description | Price /Each |
|-----------|--------------|-------------|
| OTK962 | Black & Grey | |

| Model No. | Description | Price /Each |
|-----------|-----------------|-------------|
| OTK949 | 1000/box - 1/4" | |
| OTK950 | 1000/box - 3/8" | |
| OTK948 | 1000/box - 1/2" | |
| OTK951 | 1000/box - 3/4" | |



E-Z GRIP™ STAPLERS, 1/2 STRIP

- Offers comfortable stapling with a soft-feel, non-slip grip and ergonomic design
- Versatile design stands up for handheld stapling or lies flat for desktop use
- Rotating anvil – Staples or tacks
- 15-sheet capacity
- Colour: Black
- Limited 1-year warranty
- Holds a half strip of staples

Model No. OM181
Price/Each \$

Swingline®



OPTIMA® GRIP ELECTRIC STAPLERS

- A compact automatic stapler that you control
- Jam free stapling of up to 20 sheets with Swingline® Optima® premium staples
- Built-in stack height gauge and staple placement guides
- Convenient plug-in or battery operation
- Limited 2-year warranty

Model No. OM175
Price/Each \$



Swingline®

REPLACEMENT STAPLES - BOX OF 3750 STAPLES

Model No. OM192
Price/Box \$

SWINGLINE® OPTIMA® 25 STAPLER

- Reduced effort design allows you to staple more sheets with less effort
- Features a low staple indicator
- Dimensions: 3.125" D x 7.125" W x 1.875" H
- Sheet Capacity: 0 - 25
- Staple Capacity: 210
- Colour: Grey and Orange

Model No. OP857
Price/Each \$



Swingline®

REPLACEMENT STAPLES - 3750/BOX 1/4"

Model No. OP861
Price/Box \$

SWINGLINE® OPTIMA® 25 COMPACT STAPLER

- Compact size is ideal for smaller desktops, work areas, offices and classrooms
- Features a low staple indicator on the side
- Dimensions: 5.25" L x 1.875" W x 2.94" H
- Sheet Capacity: 0 - 25
- Staple Capacity: 105
- Colour: Grey and Orange

Model No. OP825
Price/Each \$



Swingline®

REPLACEMENT STAPLES - 3750/BOX 1/4"

Model No. OP861
Price/Box \$

CONTOUR 646 STAPLERS

- Uses standard staples
- 20-sheet capacity
- 210-staple capacity
- OTK977 - Antimicrobial protection

| Model No. | Description | Price /Each |
|-----------|-------------|-------------|
| OTK977 | Black | |
| OJ620 | Chrome | |



CONTOUR 646 STAPLES

- 5000/box

Model No. OTK946
Price/Each \$



SWINGLINE® QUICK TOUCH™ STAPLER

- Offers a boost of power for effortless stapling
- Ergonomic design
- Metal construction delivers lasting durability
- Sheet Capacity: 0 - 28
- Dimensions: 7.539" L x 1.614" W x 3.169" H
- Colour: Black and Silver

Model No. OP826
Price/Each \$



REPLACEMENT STAPLES - 3750/BOX 1/4"

Model No. OP861
Price/Box \$

Swingline®

SWINGLINE® OPTIMA® 40 COMPACT STAPLER

- Durable metal construction ensures long lasting use
- Dimensions: 5.125" L x 3.184" W x 1.563" H
- Sheet Capacity: 0 - 40
- Staple Capacity: 105
- Colour: Black and Silver

Model No. OP823
Price/Each \$



REPLACEMENT STAPLES - 3750/BOX 1/4"

Model No. OM192
Price/Box \$

Swingline®

SWINGLINE® OPTIMA® 70 STAPLER

- Ergonomic design
- Features the QuickLoad™ button for fast staple refill
- Dimensions: 10.1" D x 2.5" W x 6.15" H
- Sheet Capacity: 0 - 70
- Staple Capacity: 105
- Colour: Black and Silver

Model No. OP858
Price/Each \$



REPLACEMENT STAPLES - 2500/BOX 3/8"

Model No. OP859
Price/Box \$

Swingline®

STAPLE REMOVERS

- Jaw Type

Model No. OC201
Price/Each \$



ROTEx®

GENERAL OFFICE SUPPLIES

SWINGLINE® STACK-AND-SHRED™ SHREDDER

- Auto feed shredder can shred up to 130 sheets at a time
- Slice through paper clips and staples
- Auto power feature
- Colour: Black
- Dimensions: 14" L x 12" W x 17" H
- 7 gallon waste bin included



Swingline

| Model No. | Price /Each |
|-----------|-------------|
| OP834 | |

SWINGLINE® MICRO-CUT SHREDDER

- Auto feed shredder can shred up to 9 sheets at a time
- Features a separate slot for CD/DVD shredding
- Slice through paper clips and staples
- Colour: Black
- Dimensions: 14" L x 14-1/2" W x 18-7/10" H
- 6 gallon waste bin included



Swingline

| Model No. | Price /Each |
|-----------|-------------|
| OP835 | |

GS5 PERSONAL SHREDDERS

- Strip cut personal shredder intended for one user
- Shreds 7.4 feet per minute
- Auto start/stop and reverse
- 70 dB
- 12.50" W x 12.75" D x 13.50" H
- Not intended for CDs



Swingline

| Model No. | Cut Style | Shredding Capacity | Capacity | Price /Each |
|-----------|-------------------|--------------------|----------|-------------|
| OM980 | Straight cut 1/4" | 5 sheets | 2.6 gal. | |

SX19-09 CROSS CUT SMALL OFFICE SHREDDERS

- Cut Size: 4 x 40 mm
- Security Level: P-4
- Noise Level: < 60 dB
- Jam-free technology with continuous sensing
- Shreds CDs/DVDs, credit cards, staples and paper clips
- Automatically shuts down when bin is opened
- Colour: Black



Swingline

| Model No. | Cut Style | Shredding Capacity | Capacity | Price /Each |
|-----------|-----------|--------------------|----------|-------------|
| OP297 | Cross | 19 sheets | 9 gal. | |

SM12-08 MICRO CUT SMALL OFFICE SHREDDERS

- Jam-free technology prevents paper jams before excess paper is caught in cutters
- Self clean cutters reduce buildup of shreds
- Quiet operation
- Shreds paperclips and staples
- Auto-shutdown conserves energy
- Colour: Black



Swingline

| Model No. | Cut Style | Shredding Capacity | Capacity | Price /Each |
|-----------|-----------|--------------------|----------|-------------|
| OP298 | Micro | 12 sheets | 8 gal. | |

GX5 PERSONAL SHREDDERS

- Crossed cut 0.16" x 1.18"
- Shreds 8.5 feet per minute
- Auto start/stop and reverse
- 70 dB
- 13.80" W x 14.70" D x 15.38" H
- Not intended for CDs



Swingline

| Model No. | Cut Style | Shredding Capacity | Capacity | Price /Each |
|-----------|-----------|--------------------|----------|-------------|
| OM981 | Cross | 5 sheets | 3.7 gal. | |

SWINGLINE® SHREDDER OIL

- Helps maintain cross-cut shredders running at capacity
- Container Size: 473 ml (16 oz.)
- Compatible with all shredder models regardless of the manufacturer



Swingline

| Model No. | Price /Each |
|-----------|-------------|
| OP836 | |

SWINGLINE® CLASSICUT® TRIMMER

- Features a self-sharpening steel blade and a blade shield for safety
- Trim paper, presentations, flyers, large projects and office documents
- Cut Length: 14"
- Sheet Capacity: 40
- Base Dimensions: 17.5" L x 10.5" W



Swingline

| Model No. | Price /Each |
|-----------|-------------|
| OP829 | |

LABELMANAGER® 210D ELECTRONIC LABELLERS

- Easy navigation
- Large graphical display shows text effects on screen before you print
- Prints 1/4", 3/8", 1/2" widths
- 6 font sizes, 7 styles and 8 different boxes to customize your label
- Quick access buttons to symbols and diacritical's (i.e. é, à, ç,...)
- Auto power-off to extend battery life
- Requires 6 AA batteries not included and one horizontal character wheel



DYMO®

| Model No. | Description | Price /Each |
|-----------|--------------------------------|-------------|
| ON370 | 210D LabelManager® | |
| OJ733 | 3/8" (9 mm) Black/White Label | |
| OB699 | 1/2" (12 mm) Black/White Label | |
| XB872 | AA Batteries 24/pack | |

COLD-LAMINATING SYSTEMS

- Heat-free way to finish your documents in one system
- No warming, waiting, damaging heat or irritating fumes
- No special equipment or tools needed
- Easy 3-step operation:
load, turn handle and trim
- Aggressive adhesive holds items securely in place
- To protect business cards, ID's, luggage tags
- Refill cartridges & supply rolls easy to select
- Smart design makes them easy to install
- One year limited warranty



3M

| Model No. | Description | Price /Each |
|-----------|--|-------------|
| OE660 | 8 1/2" Wide System | |
| OE661 | System Cartridge Refills, 100/Roll, 100 Applications Front and Back Lamination | |
| OE662 | 12" Wide System | |
| OE663 | System Cartridge Refills, 100/Roll, 100 Applications Front and Back Lamination | |

SWINGLINE™ GBC® FUSION™ 3100L LAMINATOR

- Warm-Up Time: 1 min.
- Laminating Speed: 31" per minute
- Maximum document width of 12"
- Compatible with 3, 5 and 7 mil thermal pouches
- Includes 30 UltraClear™ letter size laminating pouches

Model No. OP833
Price/Each \$

Swingline®



SWINGLINE™ GBC® FUSION™ 1100L LAMINATOR

- Warm-Up Time: 3 min.
- Laminating Speed: 13" per minute
- Maximum document width of 9"
- Compatible with 3 and 5 mil thermal pouches
- Includes 10 UltraClear™ letter size laminating pouches

Model No. OP830
Price/Each \$

Swingline®



LETRATAG PLUS LT-100H

- Hand-held label maker prints on LetraTag LT labels available in paper, plastic, metallic, magnetic and iron-on
- 13-character LCD screen lets you see font effects on screen before you print
- Prints up to 2 lines in 5 font sizes, 7 print styles, 8 box styles and 195 symbols
- Can add popular text features like multiple font styles, underlining, bolding, text sizing and more
- 9-label memory • Easy-to-use navigation buttons
- Auto-off power saver • Date stamp
- 3 languages option: English, French, Spanish
- Direct thermal print technology- no ribbons, ink or toner cartridges needed
- Uses 4 AA batteries (not included) or optional AC adaptor
- Includes: LetraTag Plus, mountable magnetic holder, 1/2" white paper label cassette, 1/2" clear plastic label cassette, instruction manual and warranty card

Model No. OG478
Price/Each \$



DYMO®

LABELS

| Model No. | Mfg No. | Type of Labels | Colour | Price /Each |
|-----------|---------|----------------|-----------------|-------------|
| OD621 | 91330 | 1/2" Paper | Black on White | |
| ON377 | 16952 | 1/2" Plastic | Black on Clear | |
| OD622 | 91331 | 1/2" Plastic | Black on White | |
| OJ726 | 91333 | 1/2" Plastic | Black on Red | |
| OJ501 | 91335 | 1/2" Plastic | Black on Blue | |
| OD623 | 91332 | 1/2" Plastic | Black on Yellow | |
| OD627 | 91338 | 1/2" Metallic | Black on Silver | |

AA BATTERIES, PACK OF 24

Model No. XB872 Price/Each \$

SWINGLINE™ GBC® ULTRACLEAR™ LAMINATING LETTER POUCHES

- Suitable with any thermal pouch laminator
- Provides clean and professional results
- All pouches have rounded corners



Swingline®

| Model No. | Pouch Thickness | Pouch Length | Pouch Width | Colour | Quantity Per Pack | Price /Each |
|-----------|-----------------|--------------|-------------|--------|-------------------|-------------|
| OP831 | 3 mils | 11-1/2" | 9" | Clear | 50 | |
| OP862 | 5 mils | 11-1/2" | 9" | Clear | 100 | |

SWINGLINE™ GBC® ULTRACLEAR™ LAMINATING BUSINESS CARD POUCHES

- Suitable with any thermal pouch laminator
- Provides clean and professional results
- All pouches have rounded corners
- Pouch Thickness: 5 mils
- Pouch Length: 3-11/16"
- Pouch Width: 2-3/16"
- Colour: Clear
- Quantity Per Pack: 100

Model No. OP832
Price/Each \$

Swingline®



GENERAL OFFICE SUPPLIES

ONYX™ USB POWERED DESK ORGANIZER

- USB charging port
- Material: Mesh
- Colour: Black
- Power cord included
- Three drawers available
- One horizontal letter tray
- One vertical file section
- Dimensions: 16" W x 11-1/2" D x 8-1/4" H

Model No. OP675

Mfg. No. 3234BL

Price/Each \$



ONYX™ USB POWERED DESK ORGANIZER

- USB charging port
- Power cord included
- Pullout storage drawer
- Side pockets for notebooks and folders
- Material: Mesh
- Colour: Black
- Cord Length: 5'
- Dimensions: 11-3/4" L x 18-1/4" W x 4-1/2" H

Model No. OP672

Mfg. No. 3230BL

Price/Each \$



ONYX™ HANGING ORGANIZER

- Provides under desk storage
- Features 1 desktop tray, 3 under desk trays and 1 under desk pencil tray
- Designed for sit-stand applications
- Organizer attaches to surfaces up to 2" thick
- Material: Mesh
- Colour: Black
- Includes a rubber-headed tightening screw for secure installation
- Dimensions: 10-1/4" W x 12" D x 17-1/8" H

Model No. OP677

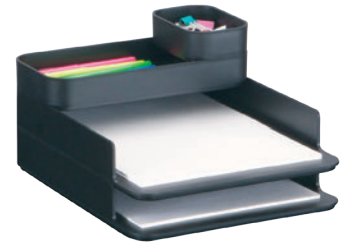
Mfg. No. 3241BL

Price/Each \$



SAFCO® STACKING DESKTOP SORTER SET

- 4 stacking components includes large and small supply storage tray, and 2 letter size paper sorting trays
- Dimensions: 10" W x 12-1/4" D x 6-1/4" H
- Material: Plastic



| Model No. | Mfg No. | Colour | Price /Each |
|-----------|---------|--------|-------------|
| OP863 | 3285BL | Black | |
| OP864 | 3285WH | White | |

ONYX™ HANGING ORGANIZER

- Provides under desk storage
- Features 4 under desk trays
- Designed for sit-stand applications
- Organizer attaches to surfaces up to 1-3/4" thick
- Material: Mesh
- Colour: Black
- Includes a rubber-headed tightening screw for secure installation
- Dimensions: 10-1/4" W x 12-3/8" D x 12" H

Model No. OP678

Mfg. No. 3242BL

Price/Each \$



SAFCO® PORTABLE CADDY

- Desktop organizer features 6 differently sized compartments
- Integrated handle for easy transportation
- Dimensions: 12-3/4" W x 7-1/4" D x 8-1/2" H
- Material: Plastic



| Model No. | Mfg No. | Colour | Price /Each |
|-----------|---------|--------|-------------|
| OP865 | 3286BL | Black | |
| OP866 | 3286WH | White | |

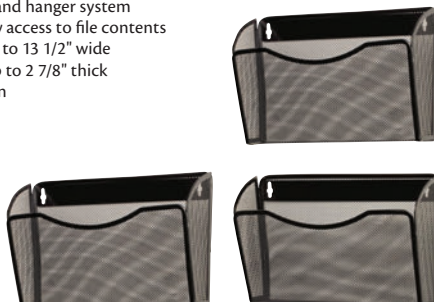
ROLODEX® MESH 3-PACK HANGING WALL FILES

- Includes 3 hanging wall files and hanger system
- Arched design allows for easy access to file contents
- Accommodates materials up to 13 1/2" wide
- Ideal for panels, partitions up to 2 7/8" thick
- Black mesh steel construction
- 14" W x 6.68" D x 38.45" H

Model No. OTC353

Mfg. No. 21961

Price/Each \$



ROLODEX® MESH LETTER WALL FILES

- Mesh wall file offers easy access to your files
- Accommodates materials up to 13 1/2" wide
- Mounts flush to wall with included hardware
- Black mesh steel construction
- 13.98" W x 3.27" D x 10.28" H

Model No. OTC351

Mfg. No. 21931

Price/Each \$



VAMPTM LED LAMPS

- Multi-pivot flexible neck
- 7-step touch dimming function
- Warm or cool light settings
- USB port in the back of the base
- Aluminum and ABS plastic construction
- Overall dimensions: 16-3/4" H x 16" D x 5" W
- Lumens: 550
- Mounting type: Flat base
- Bulb type: LED (Included)
- Lamp wattage: 9 W



SAFCO

| Model No. | Mfg. No. | Colour | Price /Each |
|-----------|----------|--------|-------------|
| XE743 | 1001SL | Silver | |
| XE744 | 1001WH | White | |

SAFCO® MINI-VAMPTM TASK LIGHT

- Features a USB port and a 7 step dimmer
- Neck Length: 15"
- Mounting Type: Flat Table Base
- Bulb Type: LED
- Lamp Wattage: 12 W
- Dimensions: 4" W x 14" D x 13" H
- Colour Temperature: 5000
- Lumens: 350

Model No. OP867
Price/Each \$



SAFCO

LED CLAMP-ON DESK LIGHT

- Adjustable clamp fits any table or work surface up to 2-1/2" thick
- 3 step touch dimmer
- Easy to maneuver flexible neck
- Bulb Type: LED
- Lamp Wattage: 7 W
- Colour Temperature (K): 5000 K
- Lumens: 350
- Mounting Type: C-Clamp
- Colour: White
- Product Dimensions: 3"W x 12"D x 13"H

Model No. OP649
Price/Each \$



SAFCO

Z-ARM LED LIGHT

- Adjustable C-Clamp fits any table or work surface up to 2-1/2" thick
- On/Off and 3 flicker-free, brightness settings in a single button
- Z-arm features 4 flex points for positioning lamp head
- Colour Temperature (K): 5000 K
- Lumens: 500
- Product Dimensions: 3"W x 28"D x 21"H
- Material: Aluminum
- Mounting Type: C-Clamp
- Colour: Silver
- Bulb Type: LED
- Lamp Wattage: 10 W

Model No. OP648
Price/Each \$



SAFCO

VIVOTM LED LAMPS

- Energy-saving and economical
- Flexible neck
- LED flicker-free lights deliver a long-life
- Touch dimmer switch adjusts brightness
- V-Cut, anti-glare filters for more natural and bright light
- Memory button recalls last setting
- Free of lead, mercury and UV rays with zero pollution
- ABS plastic construction
- Overall dimensions: 15" H x 17-1/2" D x 4" W
- Base dimensions: 4" W x 5" D
- Lumens: 1300
- Mounting type: Flat base
- Bulb type: LED (Included)
- Lamp wattage: 11 W



SAFCO

| Model No. | Mfg. No. | Colour | Price /Each |
|-----------|----------|-----------|-------------|
| XE739 | 1000BL | Black | |
| XE740 | 1000CG | Champagne | |
| XE741 | 1000RD | Red | |
| XE742 | 1000WH | White | |

SWING ARM CLAMP-ON DESK LAMPS

- Spring arm adjusts to many positions
- 36" reach
- Clamp to any surface
- Durable baked enamel finish
- Uses CFL bulbs (not included)



Dainolite

| Model No. | Frame Colour | Light | Type | Price /Each |
|-----------|--------------|-----------------------|------|-------------|
| XA982 | Black | 23 W | CFL | |
| XA983 | White | 23 W | CFL | |
| XC552 | - | 23 W Replacement Bulb | - | |

ZENITH®
Safety Products

**Rain or shine...
for affordable
quality safety
products,
ZENITH is your
ideal choice!**

GENERAL OFFICE SUPPLIES

IMPROMPTU® MOBILE GARMENT RACKS

- Powder coated black sturdy steel frame
- Translucent polycarbonate panels
- Includes storage shelf above the rack for additional garments
- Holds up to 32 hangers, 12 hangers included
- Four casters, two locking
- 40 1/4" W x 58 3/4" H x 29 3/4" D

ON740



| Model No. | Description | Price /Each |
|-----------|----------------------------|-------------|
| ON740 | Mobile Garment Rack | |
| ON741 | Extra Hanger Pack, 12/Pack | |

SAFCO® COAT RACK WITH UMBRELLA STAND

- Features 4 double hooks
- Includes umbrella stand with drip pan
- Base Width: 21"
- Overall Height: 70"
- Frame Material: Metal
- Colour: Black
- Assembly required

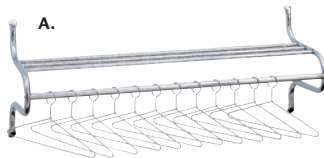
Model No. OP878

Mfg. No. 4168BL

Price/Each \$



COAT/HAT RACKS



A. SHELF RACK WITH HANGERS

Contemporary coat rack has 12 non-removable hangers; prevents loss or misplacement. Chrome finish. Mounting hardware included.

| Model No. | Description | Wt. lbs. | Price /Each |
|----------------------------|-----------------------|----------|-------------|
| Black | | | |
| A. SHELF RACK WITH HANGERS | | | |
| OE017 | 49" W x 14" D x 19" H | 13 | |



B. & C. VALET COAT RACKS & HANGERS

- Available in plastic. Hangers are black finish
- Available in 12 coat capacities. Heavy gauge steel construction. Hangers included

| Model No. | Description | Wt. lbs. | Price /Each |
|----------------------|-------------------------------------|----------|-------------|
| Black | | | |
| B. HANGER | | | |
| OTJ331 | Plastic, Black Finish, 12/Pack | 3.6 | |
| C. VALET COAT HANGER | | | |
| OE831 | 12 Coat Valet 36" W x 15" D x 63" H | 45 | |

D. STEEL COAT TREES

- All steel black coat tree, 63" high

| Model No. | Description | Wt. lbs. | Price /Each |
|-----------|-------------|----------|-------------|
| Black | | | |
| OE843 | Black | 12 | |
| OK065 | Chrome | 12 | |



SUGGESTION BOXES

- Locking suggestion box invites confidential ideas and comments
- Comes with 25 suggestion cards, two keys and front panel adhesive labels marked "Suggestions", "Comments" or "Key Drop"
- Set on tabletop or mount to any wall (hardware included)
- Suggestion card refill pack – 25 cards/pack sold separately model OE811
- 7 1/8" W x 6" D x 8 1/2" H, with a 4 3/4" x 1/8" deposit slot
- Black powder coat finish

Model No. OE810

Price/Each \$



OE811



SUGGESTION CARDS, 25/PKG

Model No. OE811

Price/Each \$



CASH BOXES

- Ideal for money, jewelry and other personal items
- Durable steel construction
- Removable 7-compartment tray for organized storage
- Colour: grey
- Includes 2 Keys
- Available in medium or large key locking cash boxes



Master
SAFETY SERIES Lock.

| Model No. | Description | Dimensions L" x W" x H" | Price /Each |
|-----------|-------------|-------------------------|-------------|
| ON577 | Medium Size | 9.78 x 7.12 x 3.56 | |
| ON578 | Large Size | 11.8 x 9.50 x 3.56 | |

MODE™ WOOD WALL COAT RACKS WITH HANGERS

- Organization for garments
- Wood side panels, in black or mahogany are connected by 3 matte silver bars which provide an additional storage shelf
- Includes: 12 brushed chrome theft deterrent hangers and mounting hardware



| Model No. | Black | Mahogany | Description | Finished Product Dimensions | Price /Each |
|-----------|-------|----------|------------------|-------------------------------|-------------|
| OJ997 | OJ998 | | 36" with hangers | 37 1/2" W x 17 1/2" D x 13" H | |
| OJ999 | OK066 | | 48" with hangers | 49 1/2" W x 17 1/2" D x 13" H | |

SAFCO® MAGNETIC COAT HOOK

- Application: Partition
- Includes four (4) heavy-duty magnets
- Frame Material: Steel
- Colour: Black

Model No. OP882

Mfg. No. 6410BL

Price/Each \$



SAFCO® GRID COAT RACK

- Style: Wall Hung
- Colour: Black
- Frame Material: Steel
- No. of Coat Hangers/Hooks: 5
- Dimensions: 21-1/2" W x 6-3/4" H x 2-1/4" L

Model No. OP881

Mfg. No. 6410BL

Price/Each \$



GENERAL OFFICE SUPPLIES

KITCHEN SUPPLIES



| Model No. | Description | Price /Each |
|-----------|--|-------------|
| OD030 | Styrofoam cups 7 oz capacity, 1000/pkg | |
| OD031 | Covers for 7 oz cups, 1000/pkg | |
| OD032 | Styrofoam cups 9 oz capacity, 1000/pkg | |
| ON910 | Covers for 8 oz or 9 oz cups, 1000/pkg | |
| OD034 | Paper cups, conical, 4 oz cap. 200/pkg | |
| OK074 | Plastic cups, clear, 7 oz cap. 2000/pkg | |
| OK075 | Plastic cups, clear, 10 oz cap. 2500/pkg | |
| OE809 | Paper cup, dispenser, stainless steel | |
| OD039 | Plastic plate 6", 125/pkg | |
| OD040 | Plastic plate 9", 125/pkg | |
| OE063 | Plastic forks, 1000/box | |
| OE064 | Plastic knives, 1000/box | |
| OE065 | Plastic spoons, 1000/box | |
| OD045 | Plastic teaspoons, 1000/box | |
| OK076 | Cutlery sets (includes: knife, fork, salt, pepper, napkin), 500/case | |
| OK078 | Foam plate 9", 500/case | |
| OK079 | Paper plate 9", 1200/case | |
| OK080 | Sugar packets, 2000/case | |

STRAWS

- 8" standard
 - 500/box
- Model No. OD038
Price/Each \$



PACKAGING FILM

- Multipurpose, comes in a practical dispenser box
 - 11" x 2500' roll
- Model No. OD048
Price/Each \$



ALUMINUM FOIL

- Practical Dispenser Box
 - 18" x 328' roll
- Model No. OD050
Price/Each \$



COFFEE STIR STICKS

| Model No. | Description | Price /Each |
|-----------|--|-------------|
| OD036 | Coffee Stir Sticks, 4 1/2" Plastic, 1000/Box | |
| OD037 | Coffee Stir Sticks, Wood, 1000/Box | |

OD036



GLASS DECANTERS

| Model No. | Description | Price /Each |
|-----------|-------------------|-------------|
| OB828 | Glass Decanter | |
| OK077 | Filters 1000/pkg. | |

OB828



ONYX™ ORGANIZERS



COFFEE POD SUPPLIES STORAGE ORGANIZERS

- Durable steel wire mesh
- Removable dividers organize coffee pods, silverware, napkins, condiments, etc.
- Ideal in break rooms, conference spaces, etc.
- Fits K-Cup® and other single serve beverage pods
- Models OP406 and OP408: Store up to 25 beverage pods



| Model No. | Mfg. No. | Description | W" | x | D" | x | H" | Price /Each |
|-----------|----------|---------------|--------|---|--------|---|--------|-------------|
| OP406 | 3274BL | Single Drawer | 12 1/2 | x | 11 1/4 | x | 3 1/4 | |
| OP407 | 3275BL | Triple Drawer | 11 1/2 | x | 8 1/4 | x | 8 1/4 | |
| OP408 | 3276BL | Stand-Up | 8 1/4 | x | 11 1/2 | x | 10 1/2 | |

TOWER BREAK ROOM ORGANIZERS

- Overall dimensions: 6" W x 6" D x 18" H
- For easy storage and organization
- Unique metal mesh design allows for easy visibility of contents
- Fits into any workspace setting, from your break room to conference area
- Features three storage compartments
- Two metal, wire handles at the top for easy carrying
- Metal label holders for easy identification (labels included)
- Ample storage space for supplies and essentials

Model No. OP409
Mfg. No. 3290BL
Price/Each \$



CONDIMENT CARTON ORGANIZERS

- Overall dimensions: 16" W x 8-1/2" D x 5-1/4" H
- For easy storage and organization
- Unique metal mesh design allows for easy visibility of contents
- Fits into any workspace setting, from your break room to conference area
- Features seven compartments, with six equal sized and one larger compartment
- Metal label holders for easy identification (labels included)
- Ample storage space for supplies and essentials

Model No. OP410
Mfg. No. 3291BL
Price/Each \$



CUP & LID HOLDER ORGANIZERS

- Overall dimensions: 12-3/4" W x 4-1/2" D x 13-1/4" H
- For easy storage and organization
- Unique metal mesh design allows for easy visibility of contents
- Fits into any workspace setting, from your break room to conference area
- Features three compartments to store coffee cups, lids and drinking cups
- Two metal, wire handles at the top for easy carrying
- Metal label holders for easy identification (labels included)
- Ample storage space for supplies and essentials

Model No. OP411
Mfg. No. 3292BL
Price/Each \$



CAFETERIA SUPPLIES

REFRIGERATOR & FREEZER

- Features a reversible door, adjustable shelves, can storage, and separate freezer compartment
- Ideal where extra food and beverage storage is needed
- Shelves included: 4 (3 in refrigerator and 1 in freezer)
- Capacity Cu. Ft.: 10 cu.ft.
- Overall dimensions: 23-3/5 W" x 25-1/5" D x 59-2/5 H"
- Freezer Position: Top
- Safety Certification: CSA
- Warranty: 18 months

Model No. OP819
Mfg. No. RMF-282W
Price/Each \$



COMPACT REFRIGERATORS

Danby's large capacity, classic compact fridges offer plenty of additional refrigeration in a compact footprint. Suitable for offices, dens and workshops, this 4.4 cu. ft. model includes Danby's patented Canstor® beverage dispenser, full width freezer section and tall bottle storage.

- Large 4.4 cu.ft. capacity compact fridge
- Mechanical thermostat
- Make ice or store frozen items in the compact freezer section
- No hassle push button defrost
- Convenient Canstor® beverage dispensing system
- 2.5 wire shelves for maximum storage versatility
- Tall bottle storage - great for large soda bottles
- Reversible door swing for convenient left or right hand opening
- Integrated door handle
- Smooth back design
- 20 1/2" W x 21 1/16" D x 32 11/16" H
- Weight: 68.34 lbs.



Danby

| Model No. | Colour | Price /Each |
|-----------|-------------------------|-------------|
| OE400 | White | |
| OM293 | Black w/Stainless Steel | |

COMPACT REFRIGERATOR

- Compact size fits on or under the counter top
- Features a reversible door, adjustable glass shelves, bottle rack and ice box with tray
- Ideal for homes and offices
- 100% HFC Fee
- Safety Certification: cETL
- Capacity Cu. Ft.: 2.6 cu. ft.
- Overall Dimensions: 17-1/2 W" x 19-3/10 D" x 25 H"
- Shelves included: 2
- Colour: White
- Warranty: 18 months

Model No. OP814
Mfg. No. RMF-70W
Price/Each \$



COMPACT REFRIGERATORS

- Compact refrigerator features reversible door, adjustable glass shelves, bottle rack and separate ice box
- Ideal for homes and offices
- 100% HFC Fee
- Safety Certification: cETL
- Shelves included: 3
- Capacity Cu. Ft.: 4 cu. ft.
- Overall dimensions: 18-19/20 W" x 22-4/5 D" x 33-2/5 H"
- Warranty: 18 months



| Model No. | Colour | Price /Each |
|-----------|--------|-------------|
| OP815 | White | |
| OP816 | Black | |
| OP817 | Steel | |

OP815



OP817



OP816



700W MICROWAVE OVEN

- Capacity Cu. Ft.: 0.7 cu. ft.
- Door Style: Push Button
- Includes 10 power levels and 6 automatic cooking menus
- Includes a 12 month warranty



| Model No. | W" | x | D" | x | H" | Colour | Price /Each |
|-----------|--------|---|---------|---|---------|--------|-------------|
| OP450 | 17-4/5 | x | 12-1/2 | x | 10-3/10 | White | |
| OP812 | 17-4/5 | x | 13-9/10 | x | 10-3/10 | Black | |

900W MICROWAVE OVEN

- Compact Size
- Capacity Cu. Ft.: 0.9 cu. ft.
- Includes 10 power levels and 6 automatic cooking menus
- Door style: Push Button
- Overall dimensions: 19 W" x 14-1/10 D" x 11-1/0 H"
- Colour: White
- Warranty: 1 year

Model No. OP813
Price/Each \$



1000W COMMERCIAL MICROWAVE

- Capacity Cu. Ft.: 0.9 cu. ft.
- Door Style: Pull Handle
- Features 3 power levels and 10 programmable settings
- Ceramic bottom for a durability and easy cleaning
- 1-touch keypad
- Bright backlit LCD display
- Colour: Silver/Stainless Steel
- Overall dimensions: 20-1/2 W" x 18 D" x 12-1/5 H"
- Warranty: 12 months

Model No. OP521
Price/Each \$



1000W MICROWAVE OVEN

- Capacity Cu. Ft.: 1.1 cu. ft.
- Door Style: Push Button
- Includes 10 power levels and 6 automatic cooking menus
- Overall dimensions: 21-1/5 W" x 15-9/10 D" x 11-4/5 H"
- Colour: Black/Stainless Steel
- Includes a 18 month warranty

Model No. OP452
Price/Each \$



1000W MICROWAVE OVEN

- Capacity Cu. Ft.: 1.34 cu. ft.
- Door Style: Push Button
- Includes 10 power levels and 6 automatic cooking menus
- Overall dimensions: 21-4/5 W" x 17-9/10 D" x 12-1/5 H"
- Colour: Silver/Stainless Steel

Model No. OP453
Price/Each \$



COUNTERTOP WATER DISPENSER

- Capacity: 5 gal./3 gal.
- Ideal for office break-rooms, reception, and meeting rooms
- Dispenses both hot and cold water
- Convenient storage and compartment for cups
- Safety lock for hot water
- Provides steaming hot water within 4 minutes
- Minimum Hot Water Temperature: 50°C
- Cold Water Dispensing Capacity: 1 L
- Hot Water Dispensing Capacity: 0.8 L
- Warranty: 12 months
- Dimensions: 12-1/4 L" x 12-1/4 W" x 15-1/4 H"
- **Water bottle is not included**

Model No. OP522
Price/Each \$



FREE-STANDING WATER DISPENSER

- Capacity: 5 gal./3 gal.
- Ideal for office break-rooms, reception, and meeting rooms
- Dispenses both hot and cold water
- Convenient storage and compartment for cups
- Safety lock for hot water
- Provides steaming hot water within 4 minutes
- Minimum Hot Water Temperature: 50°C
- Cold Water Dispensing Capacity: 3.2 L
- Hot Water Dispensing Capacity: 1 L
- Warranty: 12 months
- Dimensions: 12-3/5 L" x 12-1/4 W" x 37 H"
- **Water bottle is not included**

Model No. OP523
Price/Each \$



WATER COOLERS



OASIS® WATER COOLERS

Oasis® water coolers are manufactured with a heavy gauge steel frame which provides durable and quiet operation. They feature a 5-year limited warranty on the sealed refrigeration system and most component parts. All waterways are constructed of lead free materials and HFC 134A is used as a refrigerant. No CFCs are used. All units are standard tan sandstone finish. Drinking water temperature is 50°F/10°C. Certified for sale in Canada by an accredited certification body.



WALL-MOUNTED COOLERS

These units come in standard or compact models. All units are shipped with complete instructions and wall mounting brackets. Units should be installed with the nozzle 36 inches from the floor.

| Model No. | Mfg. No. | Description | GPH Capacity | W" | Dimensions | | | H" | Wt. lbs. | Price /Each |
|-----------|----------|-------------|--------------|----|------------|---------|---|----|----------|-------------|
| 0J952 | PLF4CM | Compact | 4 | 17 | x | 13 3/16 | x | 16 | 51 | |
| 0A061 | P8M | Standard | 8 | 17 | x | 29 7/8 | x | 14 | 73 | |
| 0A536 | P14M | Standard | 14 | 17 | x | 29 7/8 | x | 14 | 76 | |



0A061

FREE-STANDING COOLERS

COMPACT FREE-STANDING

Attractive economical line suitable for applications in offices, shops or factories where space saving is critical.

| Model No. | Mfg. No. | Description | GPH Capacity | W" | Dimensions | | | H" | Wt. lbs. | Price /Each |
|-----------|----------|-------------|--------------|----|------------|----|---|--------|----------|-------------|
| 0A063 | P3CP | Compact | 3 | 12 | x | 12 | x | 43 3/4 | 66 | |
| 0A064 | P5CP | Compact | 5 | 12 | x | 12 | x | 43 3/4 | 69 | |
| 0A548 | P10CP | Compact | 10 | 12 | x | 12 | x | 43 3/4 | 73 | |



0C709



0A063

AGAINST-A-WALL OR FREE-STANDING COOLERS

All plumbing connections are completely sealed within the cabinet, permitting flush-to-wall installation.

| Model No. | Mfg. No. | Description | GPH Capacity | W" | Dimensions | | | H" | Wt. lbs. | Price /Each |
|-----------|----------|-------------|--------------|----|------------|----|---|--------|----------|-------------|
| 0C709 | P8FA | Standard | 8 | 17 | x | 14 | x | 43 3/4 | 94 | |
| 0A550 | P14FA | Standard | 14 | 17 | x | 14 | x | 43 3/4 | 96 | |

BARRIER FREE WHEELCHAIR COOLERS

- Designed specifically for easy access
- Wheelchairs fit under edge of water basin for comfort and convenience
- Instructions and wall mounting brackets included
- Drinking water temperature is 50°F/10°C
- 17 1/2 W" x 18 1/2 D" x 22 11/32 H"



| Model No. | Mfg. No. | Bubbler Valve Type | GPH Cap. | Price /Each |
|-----------|----------|----------------------|----------|-------------|
| 0A059 | PG8AC | 3 Electric Push Bars | 7.8 | |



0A059

DRINKING WATER FILTERS FOR OASIS® COOLERS

- Removes dirt, cloudiness, particles, unpleasant odours and taste
- Reduces chlorine by 97%, lead between 95.9% and 99% and cryptosporidium and giardia cysts by 99.99%
- Works with all the Oasis® water coolers listed on this page
- Includes brackets, complete filter and colour coded waterline connections
- Fast and easy-to-change refill cartridges with automatic shut-off valve inside the filter
- Designed to last 1500 gallons or approximately six months



| Model No. | Description | Price /Each |
|-----------|------------------|-------------|
| 0G445 | Filter | |
| 0G446 | Refill Cartridge | |



0G445

VERSAFILLER™ WATER FOUNTAIN & BOTTLE FILLERS

Enjoy the best of both water options; refreshing fountain water and a bottle filler unit for refillable bottles. The VersaFiller™ accomplishes both tasks with ease and simplicity, and puts your location at the top of the refillable bottle trend while making a bold statement about your concern for the environment.

The VersaFiller™ is also designed for the future. The alcove and activation button contain Freshield™, which utilizes a silver-based antimicrobial compound. This is ideal for work-place settings, schools, university locations, and any public building.

The VersaFiller™ unit is available in two configurations. The **ON557** (PWSBF) model can be retrofitted to existing **OA059** (P8AC) coolers as well as ElKay's EZ8 models (some installation is required to connect this unit to existing P8AC models) providing an instant upgrade to those products already in the field.

The **ON557** (PWSBF) is also designed for simplicity of installation, requiring only water tubing connection to the host (P8), with no required electrical connections or separate drains.

The VersaFiller™ can be purchased as a complete top and bottom combination as well, **ON555** or **ON556**.

STANDARD FEATURES:

- Waterways are lead-free in materials and construction
- Heavy-duty galvanized steel frame bolts directly to the wall
- Freshield™ antimicrobial compound
- Gauges: Panels: 22, frame: 16
- ADA compliant for adult or child when properly installed
- Certified to NSF/ANSI Standard 61, Annex G (AB1953)
- 5-year limited warranty



**ADA
COMPLIANT**

**NSF
CERTIFIED**

**SUPERIOR
LEAD FREE
PERFORMANCE**



ON556

OASIS
The Word for Water Coolers Worldwide™

| Model No. | Mfg. No. | Description | Capacity GPH | W" | x | D" | x | H" | Weight lbs. | Price /Each |
|-----------|----------|--|--------------|----|---|----|---|----|-------------|-------------|
| ON555 | PG8SBF | VersaFiller™ Combo Complete w/ OA059 , Sandstone Finish | 8 | 24 | x | 36 | x | 24 | 74 | |
| ON556 | PG8SBF | VersaFiller™ Combo Complete w/ OA059 , Stainless Finish | 8 | 24 | x | 36 | x | 24 | 74 | |
| ON557 | N/A | VersaFiller™ Retrofit Kit for OA059 , Fountain Only (See page 1612 for OA059) | N/A | 6 | x | 18 | x | 12 | 10 | |

REPLACEMENT FILTER CARTRIDGES

Single Action (Dirt/Rust) - hot and cold water filters are made of pure white cellulose fibres. 1" centre hole.

Double Action (Taste/Odour, Dirt/Rust) - cold water only filter made of pure white cellulose fibres with activated carbon granules. For normal contamination. 1" centre hole.

Double Action (Scale, Dirt/Rust) - uses annular grooves and the graded density cellulose of the Dirt/Rust cartridges plus a compound to inhibit scale. Extends the life of pipes, fixtures and appliances. Cold water only. 1" centre hole.



| Model No. | Filter Type | Maximum Temperature | Flow/Rate/ Cartridge (GPM) | Dim H" x Dia" | Rating Microns | Price /Each |
|--------------------------|---------------------------------|---------------------|----------------------------|-----------------|----------------|-------------|
| NORMAL FILTRATION | | | | | | |
| BA590 | Single (Dirt/Rust) | 210°F (99°C) | 6 | 9 3/4 x 2 5/8 | 5 | |
| BA592 | Double (Taste/Odour, Dirt/Rust) | 100°F (38°C) | 3 | 9 3/4 x 3 | 5 | |
| BA593 | Double (Scale, Dirt/Rust) | 100°F (38°C) | 8 | 9 3/4 x 2 15/16 | 5 | |
| HEAVY FILTRATION | | | | | | |
| BA591 | Single (Dirt/Rust) | 210°F (99°C) | 6 | 9 3/4 x 2 5/8 | 50 | |

ICE MAKER WATER FILTERS

- Triple action filtration provides sparkling clear ice cubes, fresh tasting water, coffee and beverages
- Protects equipment from scale and corrosion, reducing maintenance costs
- Effective taste, odor, chlorine removal
- Filters particulates as small as 5 microns
- 1/4" NPT connections, 1/2 GPM flow rate maximum

Aqua-Pure
Water Filters
Clearly Great Water



BA609

| Model No. | Dimensions H" x Dia." | Max. Water Capacity | Max. Water Temperature | Pressure | Price /Each |
|-----------|-----------------------|---------------------|------------------------|----------|-------------|
| BA609 | 8 3/8 x 2 1/4 | 1500 gal. | 100°F (38°C) | 125 PSI | |

INDUSTRIAL WATER COOLERS

- Heavy-duty blow molded resin resists chips and dents in the toughest work area or job site
- Injection grade insulated liner material keeps your water or beverage cold
- Leak-resistant screw on lid
- Drip-resistant spigot
- Sturdy molded-in handles on the 10-gallon cooler
- Universal cup dispenser is available for 3-gallons and up, holds 200 cups

NI653



Rubbermaid
Home Products

| Model No. | Description | Wt. lbs. | Price/Each |
|-----------|-------------------------|----------|------------|
| NI653 | 3 Gallons | 5.4 | |
| ON611 | 5 Gallons | 7.5 | |
| ON607 | 5 Gallons w/Dispenser | 7.5 | |
| NI656 | 10 Gallons | 10.9 | |
| NI657 | Universal Cup Dispenser | 0.82 | |

UNDER-SINK WATER FILTERS

- Compact 2 GPM cold water filter
- Filter included
- Maximum water temperature 100°F (38°C)
- 125 PSI
- Inlet/outlet size: 3/8" NPT

BA605



Aqua-Pure
Water Filters
Clearly Great Water

| Model No. | Dimensions H" x Dia." | Filter Type | Filter # | Wt. lbs. | Price /Each |
|------------------|-----------------------|-------------|----------|----------|-------------|
| DIRT/RUST | | | | | |
| BA605 | 8 13/16 x 4 7/8 | Taste/Odour | BA607 | 2 3/4 | |

REPLACEMENT FILTER CARTRIDGES

| Model No. | Description | For Use with Housing | Price /Each |
|-----------|------------------------|----------------------|-------------|
| BA607 | Taste/Odour, Dirt/Rust | BA605 | |