

Balanced Equipment

Designed To Improve

Your Shooting . . .



CATALOGUE NO. 8

HOYT
ARCHERY CO.

10500 NATURAL BRIDGE

ST. LOUIS 21, MISSOURI

THE PROFESSIONALS

In keeping with our policy of continuous and intensive research and experimentation, great strides have been made in the performance of HOYT PROFESSIONAL bows. Through the scientific combining of plastic, fiberglas and wood into bows with sound principles of design plus precision machining and the all important "know how" developed from years of experience, the new PROFESSIONALS are instruments of perfection.

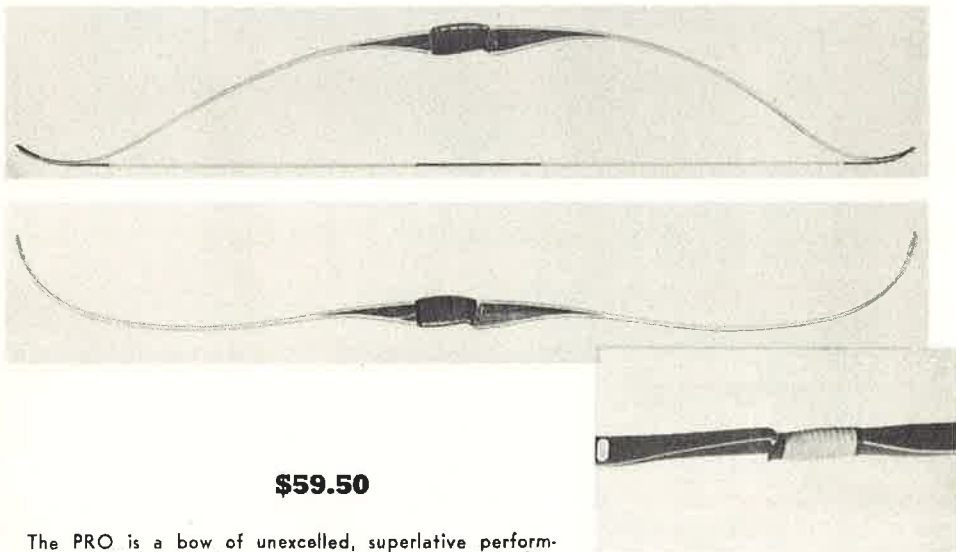
The PROFESSIONALS are custom made to order and undergo rigid testing and inspection before leaving our plant. The PROFESSIONALS have gained for themselves the enviable reputation of brilliant performance characterized by their phenomenal cast, built-in accuracy, smooth draw and soft crisp action. Constancy of cast under varying climatic conditions and rugged durability are additional strong qualities of the PROFESSIONALS. Their beautiful contours lend a pleasingly graceful appearance to the eye.

GUARANTEE: Each Hoyt bow has a serial number and is accompanied by a registration card which must be filled out and mailed by the purchaser within ten days after date of purchase. When so registered each HOYT bow is guaranteed for one year from date of purchase against faulty workmanship and materials. Unless bow shows evidence of misuse, free repair or replacement will be made should failure occur during the first two months after purchase. Thereafter, should failure occur from causes other than misuse, adjustment will be made whereby the owner pays 10% of the purchase price or cost of repair for each additional month he has the bow.

All bows are marked with weight at 28" draw.

THE PRO

A Working Recurve of Scientific Design

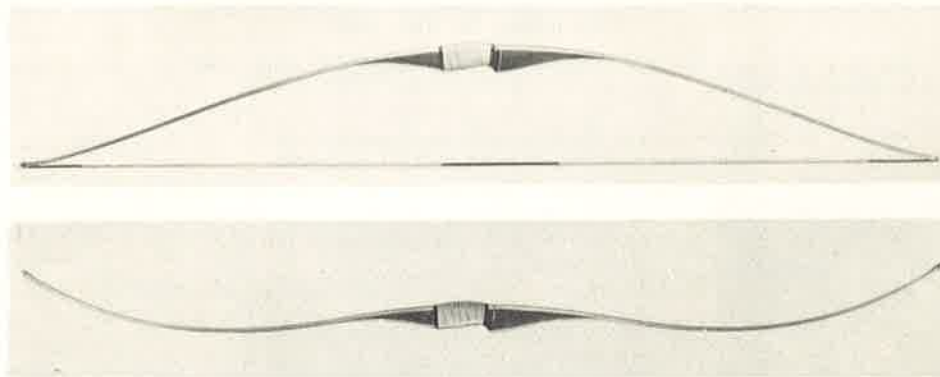


\$59.50

The PRO is a bow of unexcelled, superlative performance. Its brilliance is due to many factors, an outstanding example of which is the achievement of ultimate balance between theoretical and practical design. The PRO, truly the leader in modern bow design, is an exponent of the deflex-reflex principle which produces high efficiency for unsurpassed cast plus lower stress of limb for greater service life. Additionally, deflex design increases accuracy through improved stability in the hand and contributes to greater ease of stringing. The PRO also features near center shot design (full center shot available on special order) with "window" cut away section above arrow rest which permits full range, unobstructed sighting for both sight shooter and instinctor. Contoured for comfort, the pistol grip bow handle properly positions the bow hand and, to provide that "honest" feel, the grip is covered with a new, non-slip, suede leather handle. Lengths: 62" length, 30" draw limit; 66" length, 32" draw limit. Weights to 75 lbs. at 28". For heavier weights to 100 lbs. add \$5.00.

THE CHAMP II

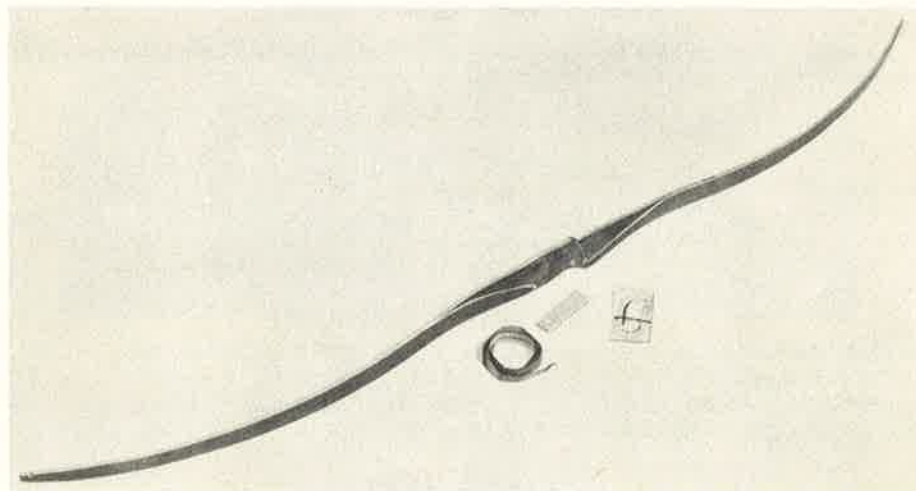
A Straight Limb of Modified Design



\$45.00

An improved, modern design based upon the deflex-reflex principle used in our PRO. The net gain in all around bow performance is astounding in all categories: 1. Cast is substantially increased. 2. Action is extremely soft—lacking any harsh kick or jar. 3. Draw is very smooth—no stack up near full draw. 4. Accuracy is improved through increased stability of deflex design. The CHAMP II is truly a bow for the archer who prefers the straight limb design with a performance increase comparable to most recurves. Handle and center section of the CHAMP II is identical to the PRO. Lengths: 62" length, 30" draw limit; 66" length, 34" draw limit. For heavier weights to 100 lbs. add \$5.00.

COMP-BO-KIT



\$32.00

Saves up to \$20.00 on the cost of a new bow. Completely tillered—ready to shoot—handle band sawed to shape—requires only shaping the handle and applying finish. Nothing more to buy. Precision made of plastic, fiberglas and wood. Corresponds in design and quality to our CHAMP II. The COMP-BO-KIT carries the same guarantee as the finished line of bows. Lengths: 62" length, 30" draw limit; 66" length, 34" draw limit. Weights to 75 lbs. at 28".

APOLLO

TUBULAR STEEL BOWS

Guaranteed for two years

The finest of tubular metal bows yet to be engineered by England's leading manufacturer of tubular sporting equipment.

APOLLO bows are smooth and comfortable to shoot and have extremely flat trajectory. Available in five great models, all have take-apart, right or left handed handle.



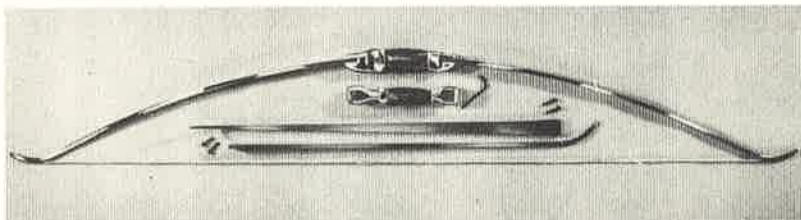
ANN WEBER CORBY

- SWALLOW.....\$29.50
Well suited for those using short arrows and for all women's rounds. 54" long with a draw of 21 lbs. at 22" and 24 lbs. at 24" draw.
- MERLIN.....with sight \$43.50, without sight \$40.00
A 58" bow for draw lengths to 26". Made in draw-weight groups 18-24 lbs. at 24" and 22-36 lbs. at 26" draw. Light in hand, fast.
- KESTRAL.....with sight \$43.50, without sight \$40.00
A 60" bow for draw lengths to 28". Available in draw-weight groups 32-38 lbs. at 26" and 36-42 lbs. at 28". A fast bow eminently suitable for the York Round and field archery.
- FALCON.....with sight \$43.50, without sight \$40.00
A 66" bow for draw lengths to 29". Made in draw-weight groups 35-43 lbs. at 26" and 39-47 lbs. at 28" draw. A superb target bow being steady and sweet shooting.
- CONDOR.....with sight \$43.50, without sight \$40.00
New field and hunting bow. Available in weights from 50-58 lbs. at 28".
- APOLLO SIGHTS.....\$ 5.00

GRIMES

ALUMINUM ALLOY BOWS

The original aluminum alloy bow. Has recurved tips and comfortable right or left handed take-down handle. Cast is excellent, action smooth. Built in three models.



- STANDARD REGULAR — Anodized dark green, 59", weights 26-67 lbs., 28" draw limit.....\$31.50
- HUNTER REGULAR — Anodized dark green, 54", weights 34-64 lbs., 27" draw limit..... 31.50
- LIGHTWEIGHT — Anodized dark maroon, 52", weights 19-27 lbs., 26" draw limit..... 16.95
- Deluxe finish on STANDARD and HUNTER, anodized Gold Tone, extra..... 2.00

LIMBS SETS

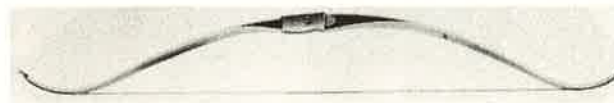
- Standard Regular\$15.50 Hunter Regular.....\$15.50
- Standard Deluxe 16.50 Hunter Deluxe..... 16.50

HANDLES

- Regular Finish\$15.75 Deluxe Finish\$16.75

BEAR BOWS

The outstanding feature of the Bear line of bows is the successful combining of Fiberglas and hard maple cores into a bow of high performance with longer life and no let-down. Available in four superb models. Each bow is registered and guaranteed.



KODIAK II
\$49.50

A custom quality bow using the working recurve principle. Equipped with compass set into form fitting, saddle-type leather handle of near center shot design, and with double arrow rest. Lengths: 60"-lengths, 28" draw limit; 64" length, 30" draw limit. Weights 35 to 75 lbs. Lengths available on special order; 56" length, 26" draw limit, 25 to 60 lbs. at 26". 68" length, 32" draw limit, 35 to 75 lbs. Weights 76 to 100 lbs. available in 64" and 68" bows at \$10.00 extra.

GRIZZLY
\$39.50



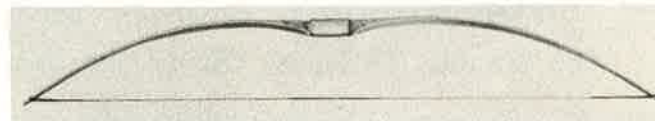
This popular all-around bow is outstanding for target, field, roving and hunting. Durable and hard hitting. Same handle design as Kodiak II. Length 62", draw limit 28". Weights 35 to 75 lbs.



POLAR
\$29.50

A straight bow of unusually good shooting qualities, a direct result of its Fiberglas-wood construction. Handle design similar to Kodiak II. Length, 64", draw limit, 30". Weights 35 to 75 lbs. Length available on special order: 68" length, 32" draw length. Weights 76 to 100 lbs. available in both lengths at \$10.00 extra.

CUB
\$22.50



A low priced bow incorporating the shooting qualities that go hand in hand with Fiberglas facing and backing. Suitable for any use. Length, 62". Draw limit 28". Weights 20 to 60 lbs. only.

SEEFAB
TUBULAR STEEL BOWS



\$36.00

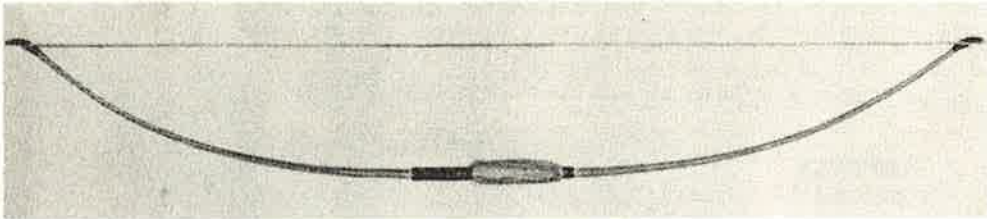
More world championships have been won with Seefab than with any other. Drawn of finest Swedish tubular steel they have the reputation of extreme durability. Made in three new deflex designs with recurved tips and take-down handle.

- TIGER — For hunting and field, 62 1/4", weights 45-62 lbs. at 28"
- CENTAUR — Men's target bow, 62 1/4", weights 34-44 lbs. at 28"
- DIANA — Ladies' target bow, 57", weights 25-34 lbs. at 25"

STREAM-EZE

FIBER GLASS BOWS

Fast, smooth, quiet, durable and attractive aptly describe the Stream-Eze product. Each bow features the convenient take-down handle and is guaranteed for one year.



| | | |
|--------------|--|-------|
| Model No. 40 | STRAIGHT DELUXE | 29.95 |
| | Length 56", Draw Weights: 30 to 60 lbs at 28" | |
| Model No. 35 | STRAIGHT STANDARD | 19.95 |
| | Length 56", Draw Weights: 30 to 60 lbs. at 28" | |
| Model No. 30 | STRAIGHT JUNIOR | 12.95 |
| | Length 54", Draw Weights to 37 lbs. at 26" | |
| Model No. 20 | STRAIGHT CADET | 5.95 |
| | Length 44", Draw Weight approximately 22 lbs. at 22" | |

LEMONWOOD & HICKORY BOWS

For Schools, Colleges, Camps and Scouting

LEMONWOOD BOWS

| | | |
|-------|---|---------|
| F105 | COLLEGIATE — Built of choice lemonwood, fiber backed and carefully hand tillered in efficient flat bow design. Colored walnut overlay at handle, leather grip, inlaid arrow plate. Double loop bowstring. 69", 30-45 lbs. at 28", for arrows 27" to 30" | \$12.00 |
| F105A | COLLEGIATE — Same as above except 66", 25-45 lbs. at 28", for arrows 26" to 28" | 12.00 |
| F105B | COLLEGIATE — Same as above except 62", 20-40 lbs. at 26", for arrows to 26" | 12.00 |
| F106 | HUNTER — Same as above except in heavier weights. 66", 45-60 lbs. at 28", for arrows to 28" | 14.00 |
| F120 | CADET — Self back, light weight bow. 62", 17-26 lbs. for 26" for arrows to 26" | 7.50 |

DURABLE HICKORY BOWS

| | | |
|-------|---------------------------------------|--------|
| P501 | Length 66", weights to 35 lbs. at 26" | \$7.50 |
| P500 | Length 60", weights to 30 lbs. at 25" | 5.00 |
| P500R | Same as above except recurved | 6.50 |
| P504 | Length 54", weight approx. 15 lbs. | 4.00 |



SEMI FINISHED BOWS

| | | |
|------|--|--------|
| P510 | Completely shaped and machined tillered. Suitable for scout merit badge award. 60" hickory | \$3.90 |
| P511 | Same, 66" hickory | 5.00 |
| P733 | Same, 66" lemonwood | 5.00 |
| P736 | Same, 60" lemonwood | 4.00 |

FACINGS AND BACKINGS

| | | |
|-----|---|--------|
| 600 | BEAR GLASS BACKING — .045" Parallel glass fiber bonded to thin strip of maple. 1 1/2" x 66" | \$5.90 |
| 601 | Same but 1 3/4" x 66" | 6.90 |
| 602 | BEAR GLASS FACING — As above but .06" thick x 1 1/2" x 66" | 6.40 |
| 603 | Same but 1 3/4" x 66" | 7.40 |
| 604 | ULTRABAC — Five ply glass, length 36", per pair; per 1/4" of width | .90 |
| 605 | GLASFACE — High strength glass facing per 1/4" of width; Regular | .75 |
| 606 | TOXFLIGHT FACING — 5/64" x 36", per pair; 1/4" of width | .50 |
| 607 | FIBER BACKING — 1 1/2" x 36", white or black, pair | .75 |

MAPLE CORE LAMINATIONS

| | | |
|-----|---|--------|
| 610 | Clear hard maple, 5/16" x 1 1/2" or 1 3/4" x 35", pair | \$1.50 |
| 611 | Maple core precision sanded to any desired thickness or taper from .04" to .28" thick, pair | 2.75 |

HANDLE RISER BLOCKS

| | | |
|-----|--|--------|
| 615 | Accurately machined walnut with ends tapered and feathered for insertion beneath facing. 1 1/2", 1 3/4" or 2" wide, 1 3/8" deep, 14" or 18" long | \$2.25 |
|-----|--|--------|

HANDLE MATERIALS

| | | |
|-----|---|--------|
| 632 | Leather, wrap type, 3/4" x 32", skived all edges, with trim | \$.65 |
| 633 | Leather, skived all edges, 4" x 5" | .50 |

BOW STRING MATERIALS

| | | |
|-----|--|--------|
| 640 | FORTISAN — White, 4 oz. spool, sizes FF & 333 | \$2.85 |
| 641 | DACRON — White, 4 oz. spool, V207 | 2.75 |
| 650 | DURA-SERV — The sensational new trouble free serving. Special 1/4" tape easily and quickly applied to loops and mocking point. Small package | .25 |
| 651 | SERVING THREAD — Large spool; copper, green, orange, red | .40 |
| 655 | BOWSTRING WAX — Special preparation, per cake | .40 |

target arrows

SUPER-X METAL TARGET ARROWS



SUPER-X's are made of 24SRT-X aluminum alloy shafting, the finest obtainable — 16 diameters and wall thicknesses make it possible to match any weight bow — Precision fletched with our special SPIR-O-FLETCHED 2 1/2" or 3 1/2" vanes for greater accuracy — Plastifletch furnished on special order at no extra charge — Choice of Mid-Nox, Speed Nock or Sure Nock — Numbered — Crested and fletched to your specifications if desired.

TA-100 SUPER-X, Metal Arrow..... Dozen **\$27.00**
 Four feather SPIR-O-FLETCHING..... **\$1.50** per dozen extra
 White or dyed white fletching..... **\$1.00** per dozen extra

CHAMPION CEDAR ARROWS Tournament Quality



CHAMPIONS are the elite of the wooden arrow line — Precision made of highly selected Port Orford Cedar — Tolerances are: 5 grains weight, .05" spine — Sizes 5/16" or 9/32", selected to fit your bow — 2 1/2" or 3 1/2" SPIR-O-FLETCHING — Numbered — Choice of Mid-Nox, Speed Nock or Sure Nock — Crested to your order.

TC-100 CHAMPION, Custom..... Dozen **\$12.00**
 Four feather SPIR-O-FLETCHING..... **\$1.50** per dozen extra
 White or dyed white fletching..... **\$1.00** per dozen extra

EXPERT CEDAR ARROWS



TC-200 EXPERT — Similar to CHAMPION except stock crested and matched in spine only..... Dozen **\$10.00**
 Four feather SPIR-O-FLETCHING..... **\$1.50** per dozen extra
 White or dyed white fletching..... **\$1.00** per dozen extra

ARROWS FOR SCHOOLS, COLLEGES AND CAMPS

Sturdy, well-made arrows of Port Orford Cedar — Extremely accurate and SPIR-O-FLETCHED — Steel piles and Speed Nock — stock crested. Sizes 5/16" or 9/32".



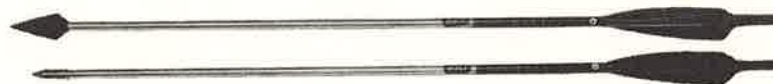
TC-300 SCHOLAR — 22" to 28", in inch graduations..... Dozen **\$8.00**



TC-400 CADET — 18", 21", 24", 26" and 28"..... Dozen **6.00**
 SEE PAGE 1 FOR ARROW LENGTH DETERMINATION.
 WHEN ORDERING STATE ARROW LENGTH AND BOW WEIGHT.

field and hunting arrows

SUPER-X METAL FIELD ARROWS



Similar in all respects to the SUPER-X target arrows but SPIR-O-FLETCHED with 5" low cut vanes — 3 1/2" vanes furnished on special order — Numbered and crested as desired — Speed Nock or Sure Nock optional.

FA-100 SUPER-X — Broadhead Arrow — Base price, without points, add cost of broadhead selected..... Dozen **\$26.50**
 FA-101 SUPER-X — With Hill's field point..... Dozen **28.50**
 FA-102 SUPER-X — With Hill's blunt point..... Dozen **28.50**
 FA-103 SUPER-X — With Zwickey field point..... Dozen **28.50**
 FA-105 SUPER-X — With target point (insert type)..... Dozen **28.00**
 Four feather SPIR-O-FLETCHING..... **\$1.50** per dozen extra

RANGER CEDAR FIELD ARROWS Tournament Grade



The RANGER line is the ultimate in custom grade field arrow design — Highest quality Port Orford cedar shafts — Matched in weight and spine — Sizes 5/16", 11/32", or 3/8" selected according to bow weight and arrow length — 5" SPIR-O-FLETCHING (used by us since 1930 and now the accepted standard on all of the finest arrows) insures accurate non-planing flight — 3 1/2" vanes furnished on special request — Numbered and brightly crested as desired — Speed Nock or Sure Nock optional.

FC-100 RANGER — Broadhead Arrow — base price, without points, add cost of broadhead selected..... Dozen **\$12.00**
 FC-101 RANGER — With Hill's field points..... Dozen **13.00**
 FC-102 RANGER — With Hill's blunt points..... Dozen **13.00**
 FC-103 RANGER — With Zwickey field points..... Dozen **13.00**
 FC-104 RANGER — With non-skid field points..... Dozen **13.00**
 FC-105 RANGER — With target points..... Dozen **12.50**
 FC-106 RANGER — With blunt points..... Dozen **12.50**

SCOUTER CEDAR FIELD ARROWS



Similar to RANGER except stock crested and matched in spine only.
 FC-200 SCOUTER — Broadhead Arrow — base price, without point, add cost of broadhead selected..... Dozen **\$10.00**
 FC-201 SCOUTER — With Hill's field points..... Dozen **11.00**
 FC-202 SCOUTER — With Hill's blunt points..... Dozen **11.00**
 FC-203 SCOUTER — With Zwickey field points..... Dozen **11.00**
 FC-204 SCOUTER — With non-skid field points..... Dozen **11.00**
 FC-205 SCOUTER — With target points..... Dozen **10.50**
 FC-206 SCOUTER — With blunt points..... Dozen **10.50**

EXTRAS FOR RANGERS AND SCOUTERS

Four feather SPIR-O-FLETCHING..... **\$1.50** per dozen extra
 White or dyed white fletching..... **\$1.00** per dozen extra
 Color dipped shafts in red, yellow, orange, white or olive drab, **\$.75** per dozen extra; no charge when crest is omitted.

field and hunting arrows

arrow materials

ROVER CEDAR FIELD ARROWS Inexpensive - Expendable - Accurate



For truly low cost, expendable cedar arrows of great accuracy for use in practice, hunting or just plinkin' around, better values have never been offered—Sizes 5/16", 11/32" or 3/8"—5" SPIR-O-FLETCHING—3 1/2" feathers on special request—All shafts color dipped full length (no crest) available in red, yellow, orange, white or olive drab—Speed Nocks.

| | | |
|---|-------|--------|
| FC-300 ROVER—Broadhead Arrow—base price, without points, add cost of broadhead selected | Dozen | \$8.00 |
| FC-301 ROVER—With Hill's field points | Dozen | 9.00 |
| FC-302 ROVER—With Hill's blunt points | Dozen | 9.00 |
| FC-303 ROVER—With Zwickey field points | Dozen | 9.00 |
| FC-304 ROVER—With non-skid field points | Dozen | 9.00 |
| FC-305 ROVER—With target points | Dozen | 8.50 |
| FC-306 ROVER—With blunt points | Dozen | 8.50 |

ROVETEER CEDAR FIELD ARROWS



Similar to ROVER except natural shaft and 3 1/2" SPIR-O-FLETCHING only.

| | | |
|--|-------|--------|
| FC-401 ROVETEER—With Hill's field points | Dozen | \$7.00 |
| FC-402 ROVETEER—With Hill's blunt points | Dozen | 7.00 |
| FC-403 ROVETEER—With Zwickey field points | Dozen | 7.00 |
| FC-404 ROVETEER—With non-skid field points | Dozen | 7.00 |
| FC-405 ROVETEER—With target points | Dozen | 6.50 |
| FC-406 ROVETEER—With blunt points | Dozen | 6.50 |

SPECIAL ARROWS



| | | |
|--|------|--------|
| FC-501 FLU-FLU—For aerial shooting, Hill's field point | Each | \$1.25 |
| FC-502 FLU-FLU—Similar but with Hill's blunt point | Each | 1.25 |



| | | |
|---|------|------|
| FC-510 FISH ARROW—3/8" cedar shaft with #718 or #719 fish points, rubber Layfletch | Each | 1.75 |
| FC-511 FISH ARROW—Solid Fiberglas shaft, 4 pronged gig | Each | 2.75 |
| FG-512 FISH ARROW—As above but with double barb harpoon head | Each | 3.50 |
| FG-513 FISH ARROW—Fiberglass shaft and rubber Layfletch, without point, add cost of fish point selected as listed under ARROW MATERIALS | Each | 2.85 |

ARROW RECONDITIONING SERVICE

| | | |
|--|-------|---------|
| RT-1 Complete Overhaul: Straighten, refletch, recrest, renock, polish and number. Target | Dozen | \$ 9.00 |
| RF-1 Same as above except Field | Dozen | 10.00 |
| RT-2 Refletch and straighten only, Target | Dozen | 5.00 |
| RF-2 Same as above except, Field | Dozen | 6.00 |

SEE PAGE 1 FOR ARROW LENGTH DETERMINATION. WHEN ORDERING STATE ARROW LENGTH AND BOW WEIGHT.

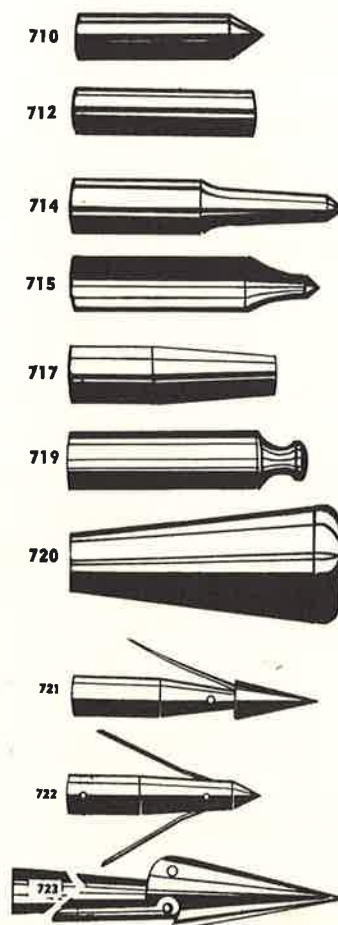
ARROW SHAFTS

NOTE: All prices of wood shafts include FINISH SANDING. When ordering matched shafts or shafts tenoned for points and nocks please state bow weight, arrow length and type of point. Add \$.50 per dozen for tenoning for points and nocks.

| | | |
|---|----------------|---------|
| 700 24SRT-X ALUMINUM SHAFTS. Fitted with hardened steel points and swaged for nocks | Doz. | \$20.00 |
| 701 FORGEWOODS—(finest grade) Footed | Doz. | 12.50 |
| 702 FORGEWOODS—(unfooted) | Doz. | 11.00 |
| 703 BATTLESHAFTS—(work-arrow grade) Footed | Doz. | 9.50 |
| 704 BATTLESHAFTS—(Unfooted) | Doz. | 8.00 |
| 705 PORT ORFORD CEDAR SHAFTS—Select grade, parallel, 29 1/2" long. Sizes 9/32", 5/16", 11/32", 3/8" | \$11.00 C—Doz. | 1.50 |
| 706 MATCHED P.O.C. shafts, 5 grains in wt. and .05" spine | Doz. | 3.00 |

ARROW POINTS

NOTE: Ferrule sizes of 710 thru 714 are given as outside diameter. All others are inside diameter.



| | | |
|--|---------------|------|
| 710 STEEL PILES, standard 1/4", 9/32", 11/32" | \$3.50 C Doz. | .50 |
| 711 STEEL PILES, special weights, 11/32"x100, 125 Gr.; 3/8"x125, 150 Grs.; 13/32"x125, 150 Gr. | 5.00 C Doz. | .75 |
| 712 STEEL BLUNTS, standard, 5/16", 11/32" | 3.50 C Doz. | .50 |
| 713 STEEL BLUNTS, in same sizes and weights as 711 plus 5/16"x100 Gr. | 5.00 C Doz. | .75 |
| 714 STEEL NON-SKID FIELD POINTS, 11/32"x100 Gr.; 3/8"x125 Gr.; 13/32"x125, 150 Gr. | 6.00 C Doz. | .90 |
| 715 HILLS FIELD POINT, tapered hole, 9/32"x100 Gr.; 5/16"x100 Gr.; 11/32"x125 Gr. | 9.00 C Doz. | 1.40 |
| 715a As above but 1/4"x85 Gr. | 7.75 C Doz. | 1.20 |
| 715b As above but 11/32"x160 Gr. | 9.75 C Doz. | 1.50 |
| 716 HILLS FIELD POINT, parallel hole, 11/32"x125, 5/16"x60, 100 Gr.; 9/32"x60, 100 Gr. | 9.00 C Doz. | 1.40 |
| 716a As above but 11/32"x160 Gr. | 9.75 C Doz. | 1.50 |
| 717 HILLS HOLLOW POINT BLUNT, tapered hole. Very effective roving and small game point. Same sizes and wts. as 715 | 9.00 C Doz. | 1.40 |
| 717a As above but 1/4"x85 Gr. | 7.75 C Doz. | 1.20 |
| 717b As above but 11/32"x160 Gr. | 9.75 C Doz. | 1.50 |
| 718 HILLS HOLLOW POINT BLUNT, parallel hole, 11/32"x125 Gr.; 5/16"x100 Gr.; 9/32"x100 Gr. | 9.00 C Doz. | 1.40 |
| 718a As above but 11/32"x160 Gr. | 9.75 C Doz. | 1.50 |
| 719 ZWICKEY FIELD POINT, tapered hole, nickel plated. 9/32"x110 Gr.; 5/16"x110 Gr.; 11/32"x125 Gr.; 11/32"x140 Gr. | 9.50 C Doz. | 1.40 |
| 720 H.T.M. rubber blunts for small game. Fits 5/16", 11/32", 3/8" | Doz. | 1.75 |
| 721 ZWICKEY FISH POINT with single spring barb | Each | .85 |
| 721a As above but double barb | Each | 1.15 |
| 722 HILLS FISH POINT with double spring barb | Each | .80 |
| 723 BEN PEARSON, harpoon style, swinging barb | Each | 1.50 |
| 724 STEEL POINT ASSEMBLIES for aluminum arrows | Each .35 Doz. | 3.50 |

ARROW NUMBER DECALS

760 Check your arrows for grouping by having them numbered. 1/4" diameter, 1 thru 12. 2 sets.....\$.15

arrow materials

BROADHEADS

NOTE: All ferrule sizes are given as inside diameters.



730 STANDARD, 2 edge, tapered hole, 11/32"x1 1/4" W. x 120-Gr. Doz. \$3.65

731 HILLS HORNETS, 3 blade tapered hole, Sizes: 1/4"x85 Gr.; 9/32"x100 Gr.; 5/16"x100 Gr.; 11/32"x125 Gr. Doz. 3.75



731a As above but special steel, 11/32"x 160 Gr. Doz. 4.50

732 HILLS HORNETS, tournament and small game broadhead. Same sizes as 731 only Doz. 3.75

733 BODKIN, 3 blade tapered hole. Sizes: 5/16"x100 Gr.; 11/32"x125 Gr. Doz. 3.75

734 MA-3, 3 blade tapered hole. Sizes: 5/16"x100 Gr.; 11/32"x125 Gr. Doz. 3.75

735 HI-PRECISION, 3 blade tapered hole. 11/32"x125 Gr. Doz. 3.75

736 BLACK DIAMOND, 2 edge, tapered hole. Sizes: 5/16"x1 1/16" W. x 115 Gr.; 11/32"x1 1/8" W. x 130 Gr. Doz. 4.75

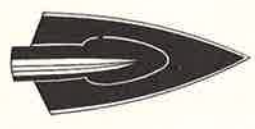
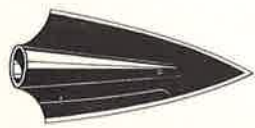
736a As above but 11/32"x1 7/32" W. x 150 Gr. Doz. 5.30

737 BLACK DIAMOND, 4 edge, tapered hole. Sizes: 5/16"x1 1/16" W. x 115 Gr.; 11/32"x1 1/8" W. x 130 Gr. Doz. 6.00

737a As above but 11/32"x1 7/32" W. x 150 Gr. Doz. 6.30

738 ACE, 2 edge, parallel hole. Sizes 5/16"x1" W. x 135 Gr.; 11/32"x 1 1/8" W. x 175 Gr. Doz. 4.25

739 ROPER-INDIAN ARROWHEAD, 2 edge, parallel hole. Magnesium alloy. 5/16" or 11/32"x110 Gr. Doz. 3.00



PLASTIC NOCKS

740 SPEED NOCKS, indexed 1/4", 9/32", 5/16", 11/32". Colors: red, white, blue, yellow, black, green. \$3.00 C - Doz. \$.45

741 MID-NOX, 3/16", 7/32", 1/4", 9/32", 5/16". Colors according to availability. 4.00 C - Doz. .60

742 SURE NOCK, unique design provides quicker and surer nocking, increases string life, minimizes arrow pinch and eliminates possibility of bow being shot empty. Tapered hole. Sizes: 7/32", 1/4", 9/32", 5/16". Red only. 5.00 C - Doz. .75

TURKEY FEATHERS

Select - Full Length - Ground Base

| | Per Doz. | Per 100 |
|--------------------|----------|---------|
| 750 Natural Barred | \$.60 | \$3.50 |
| 751 Dyed Barred | .70 | 3.75 |
| 752 Natural White | .85 | 4.75 |
| 753 Dyed White | .90 | 5.25 |
| 754 Black | .70 | 3.75 |

Dyed feathers: red, yellow, orange, blue, green.

PLASTIC VANES

755 PLASTIFLECH target vane, ea. \$.03; field, ea. \$.04

targets - faces - stands

RYE STRAW TARGETS

Hand rolled of full length rye straw. Tightly stitched with tarred sisal. Six inches thick. Will outlast any other target.

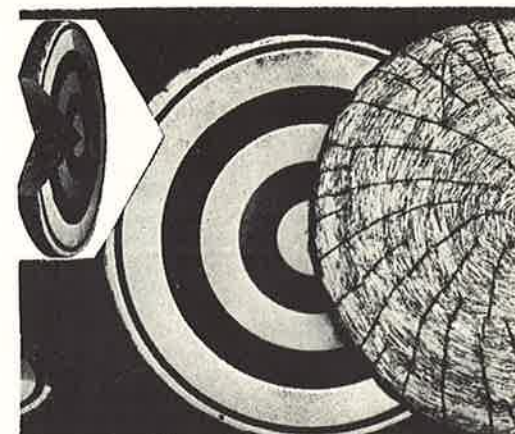
S48 48", wt. approx. 70 lbs. \$15.00
S36 36", wt. approx. 38 lbs. 9.00
S24 24", wt. approx. 19 lbs. 6.00

MARSH GRASS TARGETS

Machine made vermin proof target that will render long, dependable service.

G48 48", wt. approx. 65 lbs. \$13.25
G36 36", wt. approx. 37 lbs. 8.50
G24 24", wt. approx. 18 lbs. 5.50
G16 16", wt. approx. 10 lbs. 3.25

P403 BEN PEARSON Box Target. Tightly compressed straw in 20"x20"x4" heavy corrugated box. Includes 16" colored face \$2.00



HEAVY PAPER TARGET FACES

Printed on heavy bleached paper. Accurately graduated, with non-glare standard colors in pleasing shades.

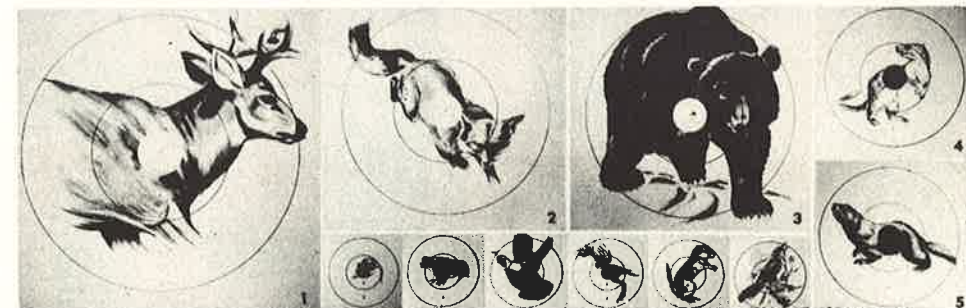
FP-48 48" \$1.00 FP-24 24" \$.40
FP-36 36" .65 FP-16 16" .15

CLOTH TARGET FACES

With or without skirt and drawstring. Non-glaring, light colors.

FC-48 48" \$4.00 FC-48S 48" Skirt and Drawstring \$4.75
FC-36 36" 2.75 FC-36S 36" Skirt and Drawstring 3.60

FIELD FACES



4200 UNIVERSAL BROADHEAD FACES — All new set consisting of 14 different animals, all in life-like poses. 14 target set, 16 faces \$5.95

2-B MARAVIOV BROADHEAD FACES — Realistic animal targets. 14 target set, 26 faces. 7.50

3601 ANIMAL ROVING FACES — N.F.A.A. field round animal faces in realistic brown coloring. 14 target set consists of 4 — 24", 6 — 18", 8 — 12", 18 — 6" 4.45

3602 GRAY ROVING FACES — Special N.F.A.A. field round faces with pleasingly contrasting outer gray ring and black aiming spot. 14 target set consist of 2 — 24", 6 — 18", 8 — 12", 18 — 6" 2.95

5510 BLACK ROVING FACES — Standard field round faces. Black outer circle and black aiming spot. 14 target set consists of 4 — 24", 5 — 18", 4 — 12", 4 — 6" 1.95

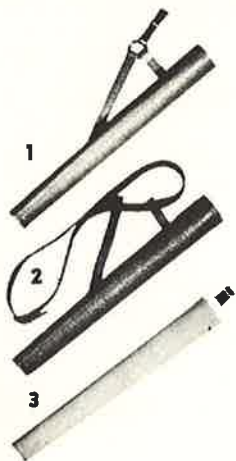
4900 NEW: BLACK HUNTERS FACES — Designed for deceptiveness in estimating distance to target. Can be used for regular Field Round as well as special Hunters Round. 14 target set consists of 4 — 24", 6 — 18", 4 — 12", 4 — 6" 3.95

TARGET STANDS

P401 Tripod of soft wood. Sturdy construction. For 48" target \$4.25
P402 As above but for 36" target 3.50

Club secretaries write for special quantity prices on targets, faces and stands.

TARGET QUIVERS



- 1 CHAMPION — Men's, leather quiver with belt hook.....\$3.50
- 2 CHAMPION — Ladies', as above with belt assembly 3.50
- 2W CHAMPION — Same as 2 but all white 4.50
- 3 SCHOLAR — Fabricoid quiver with belt loop 1.00
- 4 HIP POCKET QUIVER — Leather..... 1.50
- 4A DELUXE POCKET QUIVER — Quick action belt flap..... 2.50



4

HUNTING QUIVERS

NOTE: When ordering please specify if left handed quiver is desired.



430 — KING Deluxe shoulder style, holds 3 dozen arrows 3 compartments, zipper pocket, has knife, file and pencil sheaths. Genuine, two tone, top grain leather.

\$19.50

430L — Smaller size (26" arrows or less).

\$18.50

430LW — Same as 430L but all white.

\$19.95



420 — KING Shoulder quiver, 2 divisions, zipper pocket, two tone top grain leather.

\$13.95

485 — Same as 420 but of "Arrabuk".

\$5.95



425 — KING Center-back quiver, 2 compartments, 20-24 arrow capacity, large zipper pocket, two tone top grain leather.

\$14.95



410W — KING Shoulder quiver, 2 divisions, without pocket, lustrous white leather.

\$9.75

HUNTING QUIVERS



Q100 — ALASKAN — Deluxe shoulder quiver designed for 24-30 arrows, 3 compartments, zipper pocket. Brown and tan top grain cowhide.

\$17.75

Q150 — Smaller size (26" arrows or less).

\$15.75



Q200 — WESTERN — Beautiful shoulder type, 2 compartments, 20-24 arrow capacity. Large zipper pocket, two toned top grain cowhide.

\$14.75

Q250 — Smaller model (26" arrows or less).

\$12.75



Q400 — BLACKHAWK — Single compartment shoulder quiver, holds 10-12 arrows, two tone leather.

\$6.75

Q500 — Fabricoid Model.

\$3.95



Q850 — NORTHWOODS — Famous suede leather quiver worn straight down center of back. Nine individual broadhead pockets keep broadheads sharp, bristles insert prevents arrow rattle. Recommended exclusively for hunting use in brushy areas.

\$16.50

Q850S — Shorter size (26" arrows or less).

\$16.50



Q300 — TEXAN — Shoulder type, holds 14-18 arrows, 2 compartments, brown and tan top grain leather.

\$8.75



Q600 — MOHICAN — Belt quiver with belt, holds 8-10 arrows, top grain leather.

\$4.75

Q700 — Fabricoid Model.

\$2.25



Q1000 — BOW QUIVER — The perfect hunting quiver — light, quiet, convenient. Holds 3 arrows. Attached to bow handle by single thumb-screw. Easily and quickly attached or removed.

\$8.75

Q1000A — Rubber Fingers replacement part.

\$1.00

Q1000B — Bushing and Screw for mounting on spare bow.

\$.35

GROUND QUIVERS



- 10 — Duralumin bow stand and folding quiver. Crested to match your arrows if desired. **\$3.75**
- 11 — Suede finish ground quiver. Protects the finish of your bow. Easily dismantled to fit inside tackle box. **\$2.50**
- 12 — Fleetwood, arrow quiver only. **\$.85**

BOW CASES

NOTE: When ordering bow cases state OVERALL bow length.



- 15 — Single Case, backed Canton flannel, leather tie strings. **\$1.65**
- 16 — Double Case, as above. **\$3.00**
- 17 — Single Case, "Arrabuk" fleece-lined rubberized cloth in sepia brown. Full zipper opening across top, 3 1/2" wide. **\$3.50**
- 18 — Double Case, as above but with handle, 7" wide. **\$6.00**
- 18A — "Arrabuk" available in short lengths, for take down bows. **\$3.00**

SHOOTING TABS

NOTE: When ordering state whether for right or left hand.



- 20 — Marshall — cordovan front, calf-skin back, hinged flap to prevent blister. Small, medium and large. **\$.75**
- 21 — Cordovan finger tab, small or large. **\$.40**
- 22 — Cowhide finger tab, small or large. **\$.25**
- 23 — Western tab, cordovan, small or large. **\$.45**

SHOOTING GLOVES

NOTE: When ordering gloves state size — small, medium, large, extra large.



- 27 — Cordovan, closed end, elastic insert back. **\$2.25**
- 28 — Cordovan, open end, elastic insert back. **\$2.00**
- 28W — Same as 28 but all white, ladies' sizes only, medium and large. **\$2.25**
- 29 — Cowhide, open end, leather back. **\$1.50**

ARMGUARDS



- 30 — CRYSTAL COOL, attractive plexiglass plastic, comfortable, cool. Unique plastic straps holds guard in place. **\$2.00**
- 31 — HUNTER, cordovan with steel stay and 3 straps (elastic or leather). **\$2.95**
- 32 — COMFY, cordovan with steel stay and 2 elastic straps. **\$2.50**
- 32A — Same as above except cowhide leather. **\$1.75**
- 33 — KOOL, cordovan with steel stay and 2 elastic straps. **\$2.00**
- 33W — Same as 33 but all white. **\$1.65**
- 34 — SLIM, cordovan with steel stay and 2 elastic straps. **\$1.50**
- 35 — PLASTIC, flexible molded plastic in colors. **\$1.25**
- 36 — JUNIOR, elastic lacing, single hook. **\$.75**

BOW SIGHTS



- 37 — LINE-O-SITE — See special listing on page 1.
- 38 — GEM, all steel, peep and point sight. **\$1.25**

POINT OF AIM



- 39 — White disc marker. **\$1.00**

BOW STRINGS

NOTE: When ordering state bow weight and bow length — distance between nocks measured along contour of back.



- 40 — PLY-O-STRING — Dacron or Fortisan. Hand laid. Served with trouble free DURA-SERV for longer string life. Double loops. **\$1.50**
- 41 — PLY-O-STRING — Linen Flax. Single loop. For bows to 50 lbs and bow lengths 60" to 66". **\$1.25**

TOE MARKERS



- 44 — Aluminum foot position marker. Thin, flat tops, beveled edges. Initialed. Per Pair . . . **\$.60**

RUBBER BRUSH BUTTONS

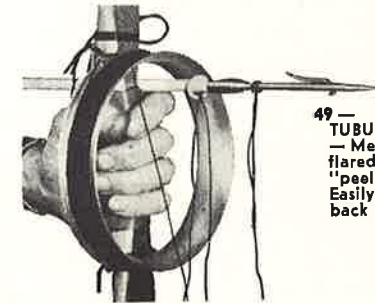


- 45 — Anti snag. Easily applied to bowstring. Quiets string noise. Per Pair . . . **\$.50**

BOW REELS



- 48 — BEAR BOW REEL — Flat type reel with 50 feet of heavy test line, metal brackets for easy attachment to bow. **\$3.95**



- 49 — TUBULAR BOW REEL — Metal tube with flared rim for smooth "peeling" of line. Easily attached to back of bow. **\$2.50**

BOW CAMOUFLAGE



- 50 — PRO-CAM — A special protective camouflage tape of olive drab for hunting bows. Waterproof. Enough for one bow. **\$1.00**

DRY FLETCH

- 62 — Don't sacrifice accuracy with wet feathers — keep 'em dry with easy to apply DRYFLETCH — Per bottle . . . **\$1.00**

SMOOTHIE



- 53 — Blouse shield with adjustable elastic strap. All white leather. Right or left hand — specify. **\$2.35**

TACKLE CASES

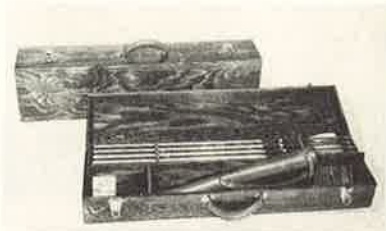


42 ROBIN HOOD — Amazingly strong — light in weight. Attractively covered in contrasting waterproof fabric inside and out. Double snap locks, reinforced metal corners, post type handle. Removeable arrow racks hold 24 arrows — spacious compartment for accessories. When ordering state overall length of your arrows — maximum inside length 29"

\$18.75

42a Special length for take-down bows, inside length 35"

\$25.00



43 KIRKWOOD — Beautiful, natural finish, all wood case. Unusual, clever interior design provides compactibility with ample accessory compartments. Double arrow racks holds 12 arrows each. Leather handle. Inside length 29"

\$15.00

ARCHERS HATS



51 ROBIN HOOD — Attractively made of wool felt in most colors with matching feather. Fits anyone. Made in your club colors at special club rate.

\$2.50

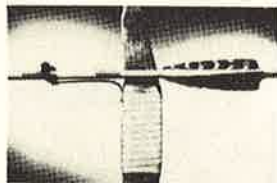


52 THE "SHERWOOD" CAP — Made of beautiful, soft suede and buckskin. Hand laced, with contrasting leather thong. Sizes: Medium and large. Colors: White, green, saddle tan, fawn, cream and rhum brown.

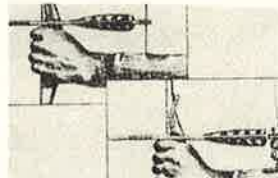
\$2.98

ARROW HOLDERS

Recommended exclusively for hunting. Brings relief from freezing to the index finger. Arrow held firmly in nocked position but is released instantly and silently without drag or jerk as you draw. Easily applied.



47 BROOKS ARROW HOLDER — \$2.00



46 NELSON ARROW HOLDER — \$2.00

SPORT SEATS



59 SPORT SEAT — The perfect companion for the deer hunter and sportsman — compact — only 12 oz. — 360° pivot — belt hook — sponge rubber seat pad — olive drab finish.

\$7.75

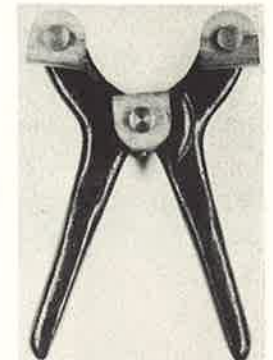
60 MULTI PURPOSE folding seat — holds 300 lbs. — weighs only 19 oz. 14" high — folds compactly.

\$2.75



ARROW TONGS

54 The STALKER metal arrow straightener. Die cast metal frame with wooden swivel blocks for use with any diameter shaft ----- \$4.00



BINOCULARS



58 A fine companion for the archer-hunter on the field — course or target range for spotting hits. Compact, 1 1/2" x 3 1/2" x 1 3/4", fits easily in waist pocket. 6 power, 15 mm. Complete with case. Add 20% excise tax ----- \$19.95

JON-E' HAND WARMER

For greater comfort when afield on those cold days. Compact and convenient to use.

- 55 Standard size ----- \$2.95
- 55a Extra Burner ----- .50
- 56 Giant Size ----- 4.95
- 56a Extra Burner ----- .75
- 57 Fluid — 8 oz. can ----- .45



BROADHEAD SHARPENER

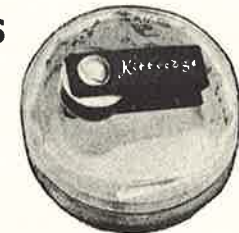


61 KEEN-KILL — A two in one tool. Hardened tool steel cutters put the proper, serrated edge on your broadheads. X-TRACT-M jaw handy for removing embedded broadheads from trees, etc. ----- \$1.49

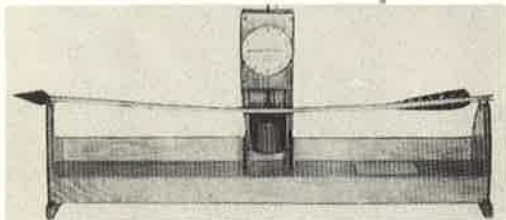
STRING SERVERS



65 SPEED-SPIN — Holds full spool of thread, adjustable tension, directions ----- \$1.35
 65a Extra spool thread ----- .40



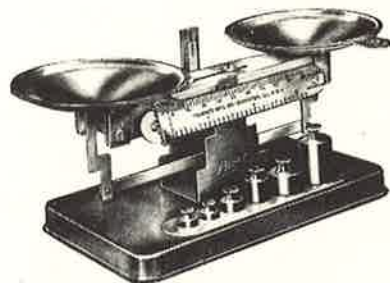
66 JEWEL — Compact, metal frame with bobbin, adjustable tension, instructions ----- 1.00



SPINE TESTER

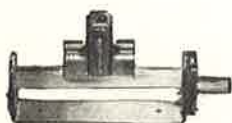
800 "LEE-FREE" Spine Tester. Essential to those making their own arrows. Accurate to .005". Easily read, adjustable dial face. Spines on 24" or 26" supports. Complete with spine—bow weight chart and spining instructions. **\$24.50**

SCALE



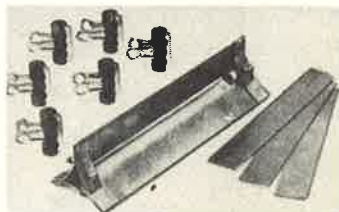
805 PELOUZE—For weighing arrow shafts. Accurate, quick reading, easy adjustment balance scale. Full set of tested weights **\$8.95**

FLETCHERS



810 RHODE SPIRO—All brass parts. Accommodates any size arrow—straight, tapered or barreled. Fletches on true helical spiral. Specify right or left..... **\$10.50**

810a Extra Spiro clamps, right or left..... **4.00**



811 FLEETWOOD—Inexpensive, all metal, fletches 3 feathers at one time. May be twisted for spiral.
4" — **\$1.25**, 5" — **\$1.50**, 6" — **\$1.75**

FEATHER TRIMMERS

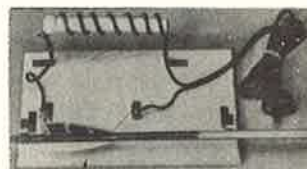


815 "YOUNG" FEATHER TRIMMER—A well designed, self contained heavy duty transformer unit that accurately burns the feathers to shape. Complete with resistance ribbons and instructions..... **\$14.95**

815a Extra nichrome ribbons 12¾" long.....Each **.25**

816 FLEETWOOD—Inexpensive, assembled, ready to use... **\$4.50**

817 FLEETWOOD—Assembly kit, otherwise as above.... **2.50**



CEMENTS & GLUES

840 FLETCH TITE—for bonding feathers and nocks to aluminum or wood.

Tube **\$.35**

841 FERR-L-TITE — super heat — welding arrowhead cement for wood or metal shaftsStick **\$.35**

842 DUCO HOUSEHOLD CEMENT — for feathers and nocks.....Tube **\$.30**

843 CASCO FLEXIBLE CEMENT—ideal for leather handles, etc.....Tube **\$.40**

844 URAC-185 — the perfect glue for strong, everlasting joints. Especially suited for gluing laminations, backings, handle risers, splices, etc. Waterproof - stain-proof—easy to use.

¼ pint **\$.80**; ½ pint **\$1.35**; 1 pint **\$2.00**