



## LANCASHIRE LOCAL HISTORY FEDERATION

### NEWSLETTER ISSUE NO. 29 NOVEMBER 2019

**COPY DATE FOR NEXT EDITION: 1 FEBRUARY 2020**

Editor (pro tem) Marianne Howell  
01942 492855 [mariannerh@hotmail.co.uk](mailto:mariannerh@hotmail.co.uk)

**Honorary President: Morris Garratt**

Chair: Marianne Howell	01942 492855
Secretary: John Wilson	03330 062270
Treasurer: Peter Bamford	01253 796184
Membership Secretary: Zoe Lawson	01772 865347
Website Manager: Peter Houghton	01772 641604

Please see the website [www.lancashirehistory.org](http://www.lancashirehistory.org) for more contact details.

### **View from the Chair**

By the time you read this newsletter, the **Fylde History Network** day will have taken place, and I know from previous years it will have been a great success, with one hundred attendees. Sadly, it was the last one after ten years. Peter Shakeshaft, Maureen Shakeshaft and Christine Storey are to be commended for arranging such varied and interesting days. They will continue to maintain the website. We wish them well in their future research into local history in the Fylde. The Federation committee will be considering whether there is any way that this great initiative can be carried on.

You will see details below of the **Federation conference** in February on the theme of music. I commend it to you as I am sure it will be a stimulating day and a chance for 'networking' with like-minded people.

Our **website** administrator, Peter Houghton, has written an article about the website. Because of the work he puts into it, and the innovations he has made, it has become

an excellent source of information. If you don't look at it regularly, I hope that reading the article will encourage you to do so.

A reminder that **Federation subscriptions** are due for renewal on 1 January. The fees remain the same very reasonable rate: £8 for societies, £8 joint membership and £5 for individual members. Zoë Lawson, the membership secretary will be contacting you shortly about this.

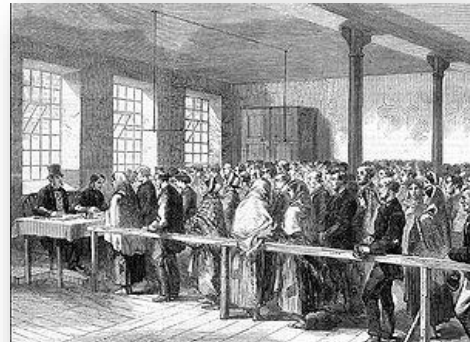
**Best wishes from Marianne**

**SOUNDS OF LANCASHIRE: MUSIC, SONG AND POETRY THROUGH HISTORY**  
The Federation will be holding its annual conference on **Saturday 29 February 2020 at Nelson House in Burnley. The theme for this year will be music, song and poetry through history in Lancashire.**

**Dave Russell**, who is Emeritus Professor at Leeds Beckett University will start the day by talking about the history of private music teachers with reference to Lancashire c1861-1921, making use of material particularly drawn from the census. Professor Russell's interest in music history covers topics ranging from musicians in Victorian Manchester to the brass band movement and cabaret clubs of the 1960s. He is the author of *Popular Music in England, 1840–1914. A Social History* (1997).

The next speaker will be **Dr Simon Rennie** who will look at the poetry and songs of the Lancashire Cotton Famine 1861-65.

Dr Rennie is Lecturer of Victorian Poetry at the University of Exeter and led a project to collect, research and interpret poetry from this crisis. He has published the article 'This 'Merikay War': poetic responses in Lancashire to the American Civil War', *Journal of Victorian Culture*, Oxford University Press (OUP).



An 1862 newspaper illustration showing people queuing for food during the Cotton Famine



Manchester Harpurhey Brass Band

**Dr Stephen Etheridge** will begin the afternoon with a talk on Southern Pennine brass bands c1840-1914. Dr Etheridge, who is a trombone player himself, has researched this topic for his PhD thesis at Huddersfield University. He has written extensively on brass band history and has led adult education classes on the subject at Huddersfield and York universities.

The final session will be taken by **Jennifer Reid** who is a performer of 19thC Industrial Revolution broadside ballads and Lancashire dialect work songs. After volunteering at Chetham's Library and the Working-Class Movement Library, Jennifer completed an Advanced Diploma in Local History at Oxford University. She sings broadsides from Manchester Central Library and Chetham's broadside collections and has recently produced a CD 'Gradely Manchester'.

The day will also include a very short AGM during the lunch break, at which officers and committee members will be elected - we welcome your attendance. This is sure to be a most interesting and informative day. For further details please consult the booking form on page 5.

## NEWS FROM ARCHIVES

### LANCASHIRE ARCHIVES

#### Sound Collection

In 2015 the North West Sound Archive was disbanded and its collections were either returned to their owners or relocated to the most appropriate local archive. Lancashire Archives received almost 15000 audio recordings, mainly Radio Lancashire broadcasts and oral history interviews, but also music, poetry and other sounds (such as textile machinery working) in a great variety of formats.

As part of the winding-up process, the Friends received just over £8000 from the Sound Archive's remaining reserve to fund work on the collections. In order to avoid the deterioration, or even demise, of the original material, it is kept in the strongrooms, and customers are provided with digital copies of the recordings. The Friends have used some of the money to purchase a new PC for the Sound Lab, where sound recordings are digitised.



The Friends have also provided a new "listening" PC for use in the searchroom. FLA are also paying for a temporary, part-time collections assistant, Mark O'Neil, to help list and repackage the recordings that arrived in an unprocessed state. Once the uncatalogued recordings have been dealt with, Mark will work on digitising more material.

#### New Whittingham Hospital indexes

The archives of Whittingham Hospital are amongst the most heavily used in our collections. We've recently added a huge amount of new data to LANCAT, our online catalogue, which should help those trying to find out more about both staff and patients. Name indexes have been created for the staff service registers; attendants' and servants' engagement and discharge books; a register of mental health officers; and leave of absence book for staff members at Whittingham Farm. In total there are

10913 entries covering staff employed between 1873 and 1959. We've also added to our patient information, with brand new indexes to the death registers and notice of death books, which add 5438 entries covering deaths which took place between 1931 and 1960. None of this would have been possible without our dedicated group of volunteers and funding as part of the Whittingham Lives project.

**Keri Nicholson, Archivist**

## **EVENTS**

**Friday 8 Nov 12.30-1.30 FREE** – By the seaside: our Lancashire ancestors at play – Keri Nicholson.

**Lancashire Day Wednesday 27 November 10.30am-12.30pm** - Talk by Dr Colin Penny, museum manager at Lancaster Castle. **FREE** but booking essential. **Café Archive open to all.**

**Friday 6 December 7pm** A History of Christmas - presented by John Meredith of Lancashire Heritage Learning Service, followed by a glass of wine and a buffet supper. £12 Booking essential.

**Friday 13 Dec 12.30-1.30 FREE** – Bad to the bone?: records of juvenile delinquency and reform – Victoria McCann.

**Friday 7 Feb 2020 7.00pm - Evening talk with buffet supper and glass of wine. £12.**

***'His books were amongst his greatest friends': Preston's greatest book collector, John Henry Spencer*** - Illustrated talk by Dr Cynthia Johnston of the Institute of English Studies, University of London.

John Henry Spencer fell in love with books at an early age. Although the circumstances of his family were desperate, Spencer pursued his love of books and learning with an astonishing passion throughout his life. His great gifts to Preston were his collections of children's books and chap books given to the Harris Museum, just before his death in 1952. These are amongst the 'hidden collections' of the Harris to be featured in an exhibition sponsored by the Paul Mellon Foundation at Blackburn Museum from Friday 31 January 2020.

To book for the events where places are limited please email [record.office@lancashire.gov.uk](mailto:record.office@lancashire.gov.uk); phone 01772 533039; or ask searchroom staff. Where there is a fee for events payment **MUST** be made in advance. Your place is not secured until payment has been received. Payment details Cheques payable to Friends of Lancashire Archives To pay by BACS : Friends of Lancashire Archives Sort code 16 - 28 - 33 Account number 11771886.

**A Reminder:** The County Council has now introduced parking charges at the Archives.



**LLHF Conference**  
**Saturday, 29 February 2020**

At Nelson House, Nelson Square,  
Burnley BB11 1LA



**Sounds of Lancashire:**  
**music, song and poetry through history**

**Programme**

- 09.30 - 10.00      **Assemble & coffee**
- 10.00 - 11.00      **Prof. Dave Russell**  
'Key workers: a history of private music teachers in England, c.1861-c.1921'
- 11.00 - 11.15      **Short break**
- 11.15 - 12.15      **Dr Simon Rennie**  
'Songs of the Distress: poetry of the Lancashire Cotton Famine 1861-65'
- 12.15 - 12.45      **AGM**
- 12.45 - 14.00      **Lunch**
- 14.00 - 15.00      **Dr Stephen Etheridge**  
'Southern Pennine Brass Bands, c.1840-1914: inventing myths of northerness and class in an industrial landscape'
- 15.00 - 15.15      **Short break**
- 15.15 - 16.15      **Jennifer Reid**  
'Manchester broadside ballads and Lancashire dialect: at home and abroad'

**Fee**    £19 (to include lunch)                      £14.00 (conference only)

There is ample free car parking at the venue.                      NB Delegates may not eat a packed lunch on the premises

**Applications must be received by 21 February**



**Booking form for 'Sounds of Lancashire'**

Please complete and return to: Zoë Lawson, "Roselea", Mill Lane, Goosnargh, Preston, PR3 2JX

Telephone: 01772 865347                      email: zoe.lawson@talktalk.net

Please reserve me \_\_\_ place(s)                      I do/do not require a map of the location

I wish to book \_\_\_ places for lunch

Choose from: Meat & potato pie \_\_\_ or Cheese & onion pie \_\_\_ (both served with veg)

Name(s) .....

Address .....Postcode.....

Telephone ..... Email..... (PRINT PLEASE)

I enclose a cheque for \_\_\_\_\_ made out to LLHF

Or

I wish to pay by BACS. Please transfer funds to the following account:

Sort Code: 01-05-31      Account number 32603983. **Ensure you give your surname as reference.**

# VIEW FROM THE WEBSITE

Peter Houghton, Federation website administrator

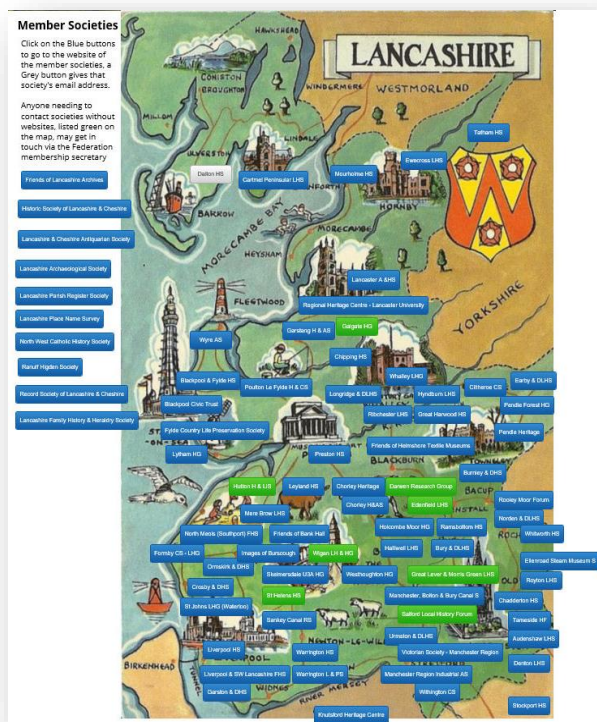
## Background

Since taking over the website administration in November 2017 I have endeavoured to make it more accessible and relevant to people browsing for information, not only for the Federation itself but for all the societies that form part of the organisation. Historical societies are not famous for being up to date - the hint is in the name! - but by using the Federation website and its information about local societies you can reach your existing and potential members and raise your profile to the general public.

As you may know I am Chairman of Leyland Historical Society. We set up our first website in December 1999, celebrating the visit of Mick Aston from Time Team. We used a very simple site which could host pictures and text; this lasted until May 2015, when the previous website owners suffered a catastrophic failure. Fortunately, we owned the web space so whilst we couldn't update the site, we were able to export all the content.

We rebuilt the website on a new platform and in July 2016 the Community Archive & Heritage Group awarded us "Website of the Year". The new site includes details of our recent meetings, events and research that the members undertake, together with more photographs, videos and multimedia.

## Member societies



When I took on the role of Federation website administrator, I copied the innovation I had introduced at Leyland, so that people throughout the membership would be kept informed of the activities of all other societies.

If you have never been on the LLHF website, I suggest you look at the Member Societies page as shown here.

By clicking on any of the blue buttons you will open a new window which takes you directly to that society's own website. Societies without websites are denoted in green; the grey buttons lead directly to email. **If you change your web address please let me know so I can keep this section up to date.**

## **Some helpful suggestions**

As I frequently look at member societies' websites, I would like to make a few suggestions which could help to make your site more informative and interesting.

- The first is always to include your venue with full address and postcode. Giving "Village Hall" as your address is fine for local people, but not for those from outside the area.
- Also, a list of meeting dates, times and subjects of meeting is beneficial; one society I noted doesn't give you those details until you join. But why would you join if you don't know what's going on?
- I will also mention the F word: Facebook. I know a lot of people don't like it, but as a way of contacting people it is useful. (At Leyland we have a Facebook page and Twitter feed linked to our website and vice versa. We are also lucky that a Leyland Memories site on Facebook also accepts our Facebook event notifications too.)

## **Events Diary**

This leads onto my second innovation on the Federation website, the Events Diary. The Federation committee members readily agreed that we should have an events diary for all the societies, so you see at a glance what is taking place in the county on any given day, so that you could attend that meeting if you wish. It is currently updated twice a year, once in August for the societies whose programme year runs from September until the following Spring / Summer, and again in late December for the societies which start their programmes in January.

While Zoe and I try our best to encourage member societies to email their programmes to me, I have to report that out of the 84 societies, 26 emailed me with their programme and I researched details of programmes from a further 23. This leaves the remainder who either had not updated or did not feature meetings on their website or do not have a website at all.

## **Website visits**

The new Federation website has had 58,305 hits in the two years since it was built which averages out at about 2429 per month, so it is gratifyingly popular. The contrast with the low number of visits to the previous version of the website shows how a dynamic, up-to-date site will attract visitors.

## **Assistance offered**

If any societies would like assistance with how to improve their website and / or want to include their details in future please send me an email.

**Peter Houghton** [peterhoughton59@gmail.com](mailto:peterhoughton59@gmail.com)

**LLHF Website** <http://www.lancashirehistory.org/home.html>

**LLHF Website – Member Societies** <http://www.lancashirehistory.org/member-societies.html>

**LLHF Website – Event Diary** <http://www.lancashirehistory.org/event-diary.html>

## NEWS FROM SOCIETIES

**CHORLEY HERITAGE CENTRE – Astley Hall Farmhouse (Upper Gallery)**  
Admission free. Monday, Wednesday, Friday – Sunday 12noon to 3pm.

**Until 13 December: History of Chorley Hygienic Laundry**



Unfortunately, the Group has to vacate these premises in December and will then be without a base while they search for somewhere permanent. Their excellent website continues [www.chorleyheritagecentre.co.uk](http://www.chorleyheritagecentre.co.uk).

Next year, 2020, is an exciting one for Chorley, as it marks the 400<sup>th</sup> anniversary of the sailing of the *Mayflower*.

Myles Standish was one of the first people ashore, and a founder of the Plymouth Colony. He became in turn the commander of the militia, the agent of the Colony in England, its treasurer and assistant governor. It is not certain where he was born and raised, but Chorley has a good case for claiming him as one of their own.

The Centre's website has more information about this developing story, including an excellently produced video about Myles Standish.

## FRIENDS OF PENDLE HERITAGE

**Thursday 14 Nov 7.30pm: Lost Railway Stations in and around NE Lancashire - Alan Young**

**Tuesday 14 Jan 2020 2.30pm: Stitches in Time - Denise North**

**Thurs 21 Feb 7.30pm: Industrialisation of Hapton - Brian Jeffery.**

Talks are held in the Barn at Pendle Heritage Centre, Park Hill, 2 Colne Rd, Barrowford, Nelson.BB9 6JQ. [www.foph.co.uk](http://www.foph.co.uk)



## **LANCASHIRE ARCHAEOLOGICAL SOCIETY**

**Friday 15 Nov – Adventus Saxonum: Material culture, DNA & identity in the Migration Period** – Dr Duncan Sayer (UCLan)

**Friday 17 Jan 2020 – AGM and Members' evening.**

Meetings are held at 7.30 at Fulwood URC Church, Symonds Road PR2 3DH. Visitors are welcome, and may join at any meeting.

## **LANCASTER ARCHAEOLOGICAL AND HISTORICAL SOCIETY**

**Thursday 28 Nov: Warton, George Washington and the Anglo-American Special Relationship 1885–1976** Sam Edwards (Manchester Metropolitan University)

St Paul's Parish Hall, Scotforth Road, Lancaster, LA1 4TS. Limited parking is available. Meet at 7.15pm for 7.30pm start. Visitors welcome at £3 per lecture.

## **RECORD SOCIETY OF LANCASHIRE AND CHESHIRE**

The Society is pleased to announce that many of its publications are now available in digital format, free to users. The digital library comprises 140 volumes and will be invaluable for those interested in the history of the two counties. Editions published within the last 10 years are not digitised but can be purchased. Further details can be found at <http://rslc.org.uk/publications/>

## **REGIONAL HERITAGE CENTRE**

**Saturday 30 Nov: Lancaster Canal – Past, Present and Future**

A study day in collaboration with the Canal and River Trust in the Biology Lecture Theatre of Lancaster University, to celebrate the 200<sup>th</sup> anniversary of the Lancaster Canal. Speakers include Dr Paul Hindle, the historical geographer; Dr William Froggatt, Heritage Adviser for the Trust; Anna Barlow, also from the Trust; and speakers from Lancaster and District Community Voluntary Solutions on the impact that canals can have on health and wellbeing.

**Saturday 25 Jan 2020: North-West Antiquaries and the development of historical writing.** A study day to be held at the Storey Institute. Speakers, including Lancaster University's Dr Sarah Rose and Dr Chris Donaldson, as well as Dr Bill Shannon, will be examining the impact that antiquarian interests have had in shaping our understandings of the history of this region. Robert Parker will speak about his forebear, the antiquary Thomas Lister Parker of Browsholme, and Dr Jane Platt will speak about Thomas Machell.

**Saturday 22 February: The end is nigh: the Lancashire way of death.** Study day with Dr Alan Crosby.

**Saturday 7 March: 47<sup>th</sup> Annual Archaeology Forum.**

Full details of all events from <https://www.lancaster.ac.uk/users/rhc/>



## WARRINGTON LITERARY AND PHILOSOPHICAL SOCIETY

### 2 Dec: The Black Prince and the Capture of a King: Poitiers, 1356

A J MacKenzie, Anglo-Canadian Author. Less well-known than Agincourt or Crecy, the Battle of Poitiers in 1356 was one of the most hard-fought and dramatic battles of the Hundred Years War. This talk will tell the story of that remarkable day of battle and the events leading up to it, beginning with the Battle of Crecy ten years earlier.

### 3 Feb 2020: Gladstone's Library: A History of the Collections

Gary Butler, Assistant Librarian, Gladstone Library. Gladstone's Library is a unique institution holding remarkable collections. Hear how our four-times Prime Minister established the library in the 1890s, and learn not only about the history of the library, but what makes rare books so rare, and the special collections so special.

### 2 March: The Wordsworths at Dove Cottage

Melissa Mitchell, Assistant Curator, The Wordsworth Trust. Melissa will introduce William Wordsworth, his sister Dorothy, and their life at Dove Cottage in Grasmere, where they lived from 1799-1808. Wordsworth wrote a great deal of his best-loved poetry here, and Dorothy kept her famous journal. Through their manuscripts, we'll explore the lives of this remarkable family, and how some of the UK's greatest literature came to be, in the year of Wordsworth's 250<sup>th</sup> birthday.

Meetings of both Warrington societies are held at 7.30pm on Mondays at Friars Green Independent Methodist Chapel in Cairo Street WA1 1EH.

## NEWS ROUNDUP

### UNIVERSITY OF CENTRAL LANCASHIRE

#### Making You Think - A Festival of the Humanities 18 – 23 November



Join staff and students from the School of Humanities and Social Science in a celebration of all things humane. Featuring talks, debates, workshops, displays, performances and exhibitions from historians, philosophers, popular culture and literature experts, writers, linguists, sociologists and more. A diverse programme ranges from the mysteries of plumbers' marks in nineteenth century churches to the challenges of communication without language.

For more information visit

<https://www.uclan.ac.uk/news/making-you-think.php>

## **SOUTH RIBBLE MUSEUM AND EXHIBITION CENTRE**

The Old Grammar School, Church Road, Leyland [www.southribblemuseum.org.uk](http://www.southribblemuseum.org.uk)

**Thursday 7 Nov 2pm – Why are Preston North End different?:** The long shadow of history and can they escape it – David Hunt.

**Friday 15 Nov 2-4pm – An Improving Address by a Lady.** Followed by suffragist refreshments, to mark the centenary of the first woman to take her seat in the House of Commons.

**Thursday 21 Nov 2pm – Fox Lane, Club Street, Hunt's Row:** The handloom weaver colonies of South Ribble – David Hunt.

## **'NEW' 2000 YEARS OLD ROMAN ROAD FOUND**

An important Roman road not seen for 1600 years has been uncovered by local amateur archaeologists.

Wyre Archaeology [www.wyresearchaeology.org.uk](http://www.wyresearchaeology.org.uk) a group of amateur archaeologists based in the Wyre and Preston area, have located and proved the existence of a Roman road that has eluded antiquarians, cartographers and archaeologists for 200 years. A two-day excavation in August uncovered a remarkably well-preserved 8-metre-wide section of the 2000 year old road in a farmer's field near Bilsborrow. Wyre Archaeology Secretary David Hampson said, "This is probably our most successful and important dig. Our team has been able to reveal a previously unknown but significant link in the Roman road network in Lancashire. For amateur archaeologists it doesn't get much better than that!"

It is well known that a Roman road linked the Roman military depot at Walton-le-Dale (now under the Capitol Centre) with the important Roman fort at Lancaster. Another Roman road must have connected Lancaster to the Roman fort at Ribchester but its route has been a mystery until now. Most experts, including those of the Ordnance Survey, believed that this route lay over Longridge Fell or Beacon Fell approaching Galgate from the direction of the village of Street. This recent discovery disproves that theory. Roman road researcher and former Lancashire County Council engineer and surveyor, David Ratledge, says, "The answer was simple – the road took a different course altogether – it went via Garstang. The route taken was in fact more sensible and economical, going via Longridge and Inglewhite to Catterall where it joined the main South to North road from Walton-le-Dale."

David's discovery was made thanks to his research using imagery from the Environment Agency's LiDAR surveys. LiDAR (Light Detection and Ranging) uses laser beams directed from aircraft to map variations in land surface as small as 2cm.

David asked his colleagues in Wyre Archaeology to organise a dig to confirm his calculation of the route of the road. The farmer gave permission for the dig, which proved a resounding success. It unearthed an 8-metre-wide section of road with two boundary ditches, and excavations to the natural surface beneath the road revealed

how it was constructed. David Ratledge said, “The road was probably built just after the Roman invasion in the 1<sup>st</sup> century CE and is in a remarkable state of preservation, given that it hasn’t been maintained since the Romans left 1600 years ago. We’ve solved a puzzle that nobody has been able to do in well over 150 years.” Further information can be obtained from David Hampson [secwya@gmail.com](mailto:secwya@gmail.com).

LiDAR technology has enabled David Ratledge to trace Roman roads in Lancashire and Cumbria, confirming supposed routes but demonstrating in some instances that even Ordnance Survey maps are fallible, showing roads in the wrong location and presumed roads that don’t exist. Research into Roman roads can be found at [www.romanroads.org](http://www.romanroads.org).



(Images courtesy of David Ratledge, Wyre Archaeology)



Aerial view of road surface during excavation. North top of picture. (Drone image courtesy of Chris Drabble Wyre Archaeology)

## **JOHN RYLANDS LIBRARY (THE UNIVERSITY OF MANCHESTER LIBRARY)**

**New dedicated area for maps in the Main Library.** The map room on Purple Ground in the Main Library is being trialled until the end of the year as a Special Collections Reading Room.

The trial will include provision for teaching workshops and other enhanced study for those engaging with the map collections.

Staff will be on hand to help on Tuesdays, Wednesdays and Thursdays from 9.30am to 12.30pm and 1.30 to 4.30pm. Appointments to view maps must be made in advance. To protect the collections, food and drink are not allowed in this area (even water).

If you have any questions, feedback on the service, or wish to make an appointment, email: [uml.maps@manchester.ac.uk](mailto:uml.maps@manchester.ac.uk)

## EXHIBITIONS

### PEOPLE'S HISTORY MUSEUM Until 23 February 2020

(Free to enter with a suggested donation of £5)



### Disrupt? Peterloo and Protest

Part of the national commemorations marking 200 years since the Peterloo Massacre in Manchester in 1819, this exhibition tells the story of Peterloo and highlights its relevance today, examining issues within our democracy that people are campaigning for 200 years on.

The exhibition features objects, including original Peterloo artefacts, brought together for the very first time, alongside pieces telling more recent stories of protest. A short film commissioned especially for the exhibition brings to life the story of the Peterloo, protest, and the road to democratic reform.

### REQUEST FOR INFORMATION

**Nicholas Watts** hopes members may be able to help with his research.

“I am currently studying for a part-time MA in History at the University of York. My research topic is the history of Pigeon Racing in Britain between 1870 and 1914. As I understand that Lancashire has a long and rich involvement with this sport, I am keen to discover if any of the members of the Federation have any information or access to archives that might help me with my research. I am particularly interested in finding out how clubs became established and grew and how they negotiated with railway companies for the carriage of their pigeons.”

Please email Nicholas if you can help [na.watts@hotmail.co.uk](mailto:na.watts@hotmail.co.uk).

# Archaeology Day 2019



November 30th 2019  
The Peel Building at the University of Salford  
Only £10 entry

- ★ Complimentary new publications from the Past Revealed series, as well as several from previous years.
  - ★ Refreshments provided - teas, coffees, and biscuits
- ★ Stalls providing updates of archaeological work within Greater Manchester
  - ★ Archaeological and historical books for purchase
- ★ Highlights of some of the most prominent excavations in Greater Manchester told by leading experts in the field



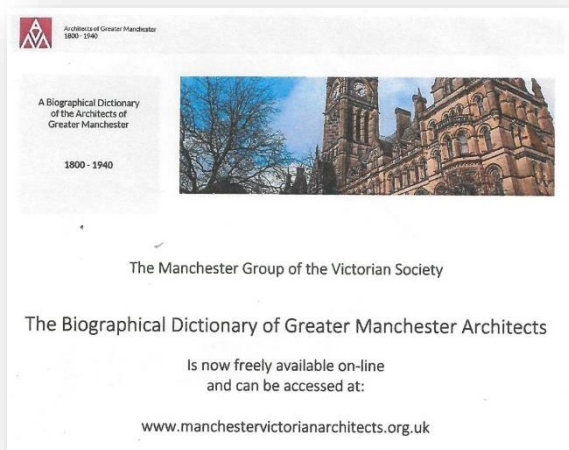
To book your place, please go to:

University of Salford Shop (or google search - Salford online shop archaeology day 2019)

<https://shop.salford.ac.uk/product-catalogue/conferences-and-events/greater-manchester-archaeology-day/greater-manchester-archaeology-day-2019>

For any queries please contact: [p.r.d.dargan-makin@salford.ac.uk](mailto:p.r.d.dargan-makin@salford.ac.uk)

## PUBLICATIONS OF INTEREST



Information is based mainly on contemporary newspaper reports and, from 1843, *The Builder*. Much detail has then been cross-referenced to civil records of births, marriages, deaths and census returns. These methods have long been standard for academics and family historians and have been recently publicised by Professor David Olusoga's TV programmes "A House Through Time".

### THE BIOGRAPHICAL DICTIONARY OF GREATER MANCHESTER ARCHITECTS

The dictionary is essentially a text-based resource dealing with architects known to have been born, or who trained, lived or worked, in Greater Manchester between 1800 and 1940. It contains details of over 1,000 architects, 400 partnerships and 10,000 buildings.

It is searchable by name or location of architect, practice, or building. Architects based in the Greater Manchester area have their known works catalogued as fully as possible. Details of architects based elsewhere in the United Kingdom are included insofar as their commissions relate to the Greater Manchester area. The works of architects who were born or trained in Manchester but practised elsewhere in the United Kingdom, the Commonwealth, and the USA are catalogued, though less comprehensively.

### PETERLOO 1819-2019

The Peterloo Learning Resources are a FREE package of History and Citizenship learning resources aimed at Key Stages 2 – 3.

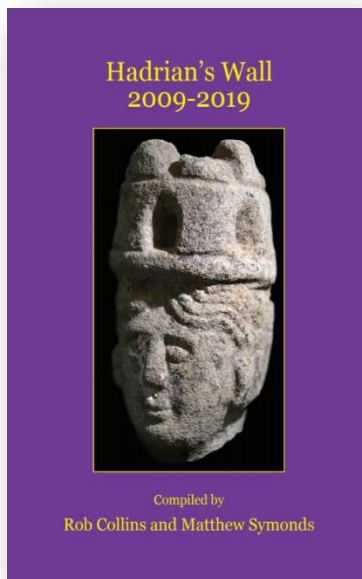
The resources are mapped to the National Curriculum and flexible enough to be delivered as part of mainstream subjects and by non-subject specialists. Influence is drawn from the themes for Peterloo 2019, which are Protest, Democracy and Freedom of Speech, through which parallels between historic and contemporary issues can be drawn.





The Learning Resources explore both the history and legacy of the Peterloo Massacre 200 years on as both a major event in Manchester's history and a defining moment for Britain's democracy. The ambition is to foster in young people a greater understanding and connectivity to politics, and their role as active citizens.

These resources have been co-designed with [The Politics Project](#) in collaboration with schools, teachers and young people from across Greater Manchester. They have been created by Manchester Histories and People's History Museum, and supported by The National Lottery Heritage Fund, Historic England and UK Parliament Education.



**HADRIAN'S WALL 2009-2019:** A summary of excavation and research prepared for the fourteenth pilgrimage of Hadrian's Wall. Compiled by Rob Collins and Matthew Symonds. A joint publication between Cumberland and Westmorland Antiquarian and Archaeological Society and the Society of Antiquaries of Newcastle upon Tyne.

With a separate digital bibliography of sources within the text, plus references to additional digital resources.

Hardback xii plus 250pp., 91 ill. ISBN 9781873124826. £15.00. Copies available from Ian Caruana, 10 Peter Street, Carlisle CA3 8QP. (Tel: 01228 544120).

Email: [librarian@cumbriapast.com](mailto:librarian@cumbriapast.com) with any queries.

## **WANTED... ..MORE VOLUNTEERS TO EXTRACT PLACE-NAMES FOR THE LANCASHIRE PLACE NAME SURVEY**

Professor John Insley, Lancashire editor for the English Place-Name Society, is hoping to recruit people to work on the **Penwortham Priory deeds** (Chetham Society volume 30) and the **Norris deeds**, which relate to the Liverpool area (Record Society of Lancashire and Cheshire volume 93). Volunteers will work from printed transcripts, either at home or in the Lancashire Archives searchroom. Use of a laptop or computer is required as the names are recorded onto EXCEL spreadsheets.

There is also a need for names to be extracted from some of the detailed catalogues in Lancashire Archives searchroom.

If you are interested and want to find out more please contact Jacquie Crosby.

[Jacquie.crosby@lancashire.gov.uk](mailto:Jacquie.crosby@lancashire.gov.uk)

## **ADVANCE NOTICE OF AN EXCITING EVENT IN 2020**

Oxford Archaeology North, in conjunction with the Federation, is arranging an event in the summer next year which will be open to all societies and members.

The theme will be about how to get started in all aspects of archaeological enquiry. Whether you have a Roman road in your area, or the remains of a 19<sup>th</sup> century cotton mill, or even knowledge of interesting sites with no extant physical evidence, this day will be an opportunity to learn about undertaking archaeological research. It will assist you if you would like to know more about the support and guidance available to conduct desk-based research, record keeping, recruitment of volunteers, and sources of funding.

In the new year we will be sending out a questionnaire, which we encourage you to share with your society's members, to find out which aspects you would like to find out more about.

Oxford Archaeology North, based in Lancaster, celebrates its 40<sup>th</sup> anniversary this year, and has been involved in major projects across the region.

**The Federation Committee would be very pleased to hear from anyone who would be interested in taking on the role of newsletter editor. This is one of the principal means of communication with members, and is published four times a year. Guidance would be freely offered.**

**Please phone or email Marianne Howell.**

**COPY DATE FOR NEXT EDITION:**

**1 FEBRUARY 2020**