

# POWERS' PICKS \$15

Volume 10 Issue 19

November 16th-21st, 2022

© 2022 BP Sports, LLC

## CFB/NFL Best Bets are 51-34-2 This Year! CFB Wk 12 Best Bets Pg 3, NFL Wk 11 Best Bets Pg 7

### Week 11 News and Notes!

For those of you that are new, in this section we'll recap what happened last week specifically, the misleading finals, the key injuries, the bad beats and the line moves. We'll include most of these recaps here, therefore you don't have to waste time reading about them in my game-by-game write-ups for the upcoming week. Without further adieu, here's a run down of what happened last week in the world of CFB.

#### Week 11 Trends

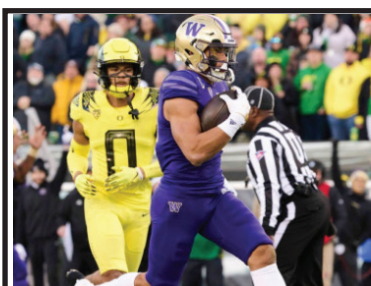
<b>Favorites-Dogs</b>	
Straight Up	49-16
ATS	34-29-2
<b>Home-Away</b>	
Straight Up	37-27
ATS	34-28-2
<b>Totals (O/U)</b>	
Over-Under	29-35-1
<b>Season To-Date</b>	
<b>Favorites-Dogs</b>	
Straight Up	544-169
ATS	338-362-12
<b>Home-Away</b>	
Straight Up	458-243
ATS	350-338-12
<b>Totals (O/U)</b>	
Over-Under	340-363-9

#### Largest Favorites to Cover:

Ohio St (-40) vs Indiana, 56-14  
USC (-34.5) vs Colorado, 55-17  
Michigan (-30.5) vs Nebraska, 34-3

#### Biggest Money line Upsets:

Arizona +795 won 34-20 at UCLA (+20)  
Boston College +800 won 21-20 at NC State (+18)  
Vanderbilt +640 won 24-21 at Kentucky (+17)  
Connecticut +415 won 36-33 vs Liberty (+13.5)



No. 25 Washington upset No. 6 Oregon 37-34 as 12-point underdogs last Saturday night. The loss likely knocks Oregon out of CFB Playoff contention leaving USC as the Pac-12's last hope.

### ATS Notables

#### Best ATS teams with cover margin:

TCU 8-1-1 +7.75 points per game  
Connecticut 9-2 +7.95  
Tennessee 8-2 +10.2  
Oregon St 8-2 +6.5  
Tulane 8-2 +4.95  
Western Kentucky 8-3 +6.4  
**Best OVER teams with margin:**  
Houston 9-1 +16.05 points per game  
Louisiana Tech 8-2 +8.6  
Rice 8-2 +7.45  
Memphis 8-2 +3.85

#### Worst ATS teams with cover margin:

Miami, FL 2-8 -9.5 points per game  
Stanford 2-8 -5.2  
Colorado 2-8 -4.15  
Tulsa 2-7-1 -4.1  
Cincinnati 2-7-1 -1.3  
**Best UNDER teams with margin:**  
Kentucky 9-1 -7.55 points per game  
Colorado St 9-1 -6.85  
Iowa St 8-2 -10.9  
Marshall 8-2 -10.55  
Washington St 8-2 -8.7  
Miami, OH 8-2 -8.4  
Missouri 8-2 -3.15

### Misleading Finals

-Georgia Southern was only outgained 435-430 in a 19-point loss to UL-Lafayette.  
-Georgia Tech had a 363-353 yard edge vs Miami, FL but lost 35-14 (-4 in TO's).  
-Kansas had a 525-510 yard edge vs Texas Tech but lost 43-28 (-2 in TO's).  
-Georgia St had a 535-300 edge vs ULM but lost 31-28.  
-Massachusetts had a 475-275 yard edge but lost 35-33 to Arkansas St.  
-Iowa St had a 333-244 yard edge but lost 20-14 to Oklahoma St (-3 in TO's).  
-Colorado St had a 372-236 yard edge but lost 14-13 to Wyoming.

### Bad Beats

-Rutgers (+10) got a 31-yard TD pass on 4th&28 with :47 for the miracle back-door cover vs Michigan St in a 27-21 loss. We had Rutgers on these pages.  
-The total in the Miami/Georgia Tech game was 43.5. There were only 21 points scored mid-way through the fourth quarter but the teams scored 28 points in the final 8 minutes to put it OVER.  
-Michigan (-30.5) got a 43-yard FG with 1:17 left to beat Nebraska 34-3. It was the first time all game, Michigan was covering.  
-Hawaii (+10.5) trailed Utah St 41-24 but got a 69-yard TD with 3:33 left and a 19-yard FG with :18 left to only lose by 7.  
-USC (-34.5) got a 3-yard TD run with :36 left to beat Colorado 55-17.  
-UNLV (+8.5) got a 33-yard FG with :13 left to only lose 37-30 to Fresno St.

### Injuries/Personnel News

-Akron QB DJ Iron is questionable for this week's game vs Buffalo.  
-Arkansas QB KJ Jefferson is practicing early in the week.  
-Central Michigan RB Lew Nichols is expected back this week.  
-Georgia Southern WR Derwin Burgess (717 yards, 7 TD's) is out for the season.  
-Georgia Tech QB Jeff Sims has been shut down for the season. Zach Pyron who has been starting the last few games is out for the season (clavicle). The Yellow Jackets will go to Zach Gibson.  
-Illinois RB's Chase Brown and Josh McCray are "trending in the right direction" according to Bret Bielema.  
-Kansas St QB Will Howard will start this week, Adrian Martinez is unavailable.  
-Louisville QB Malik Cunningham is day-to-day (shoulder).  
-Memphis RB Brandon Thomas is out for the season.  
-Miami, FL QB Tyler Van Dyke is questionable this week.  
-Nebraska QB Casey Thompson did throw in practice Tuesday. 2nd string Chubba Purdy is out (ankle).  
-Old Dominion WR Ali Jennings (959 yards) is out for the season.  
-Texas A&M WR Moose Muhammad will be available this week.  
-Texas Tech QB Tyler Shough is expected to start again this week.  
-USC RB Travis Dye is out for the season.  
-USF QB Katravis Marsh had successful neck surgery after getting injured in last Saturday's game. USF will be down to a 4th string QB in Byrum Brown (from the summer) on Thursday night.  
**-Virginia WR Lavel Davis (368 yards), WR Devin Chandler and OLB D'Sean Perry were tragically shot and killed Sunday. RB Mike Hollins (215 rush yards) is in critical condition. This week's game vs Coastal Carolina has been cancelled.**

### Recapping Week 11 Best Bets

Solid, winning 5-3 week. We went 3-2 in college with our top play Florida St crushing Syracuse. The NFL went 2-1 highlighted by Washington's upset over Philadelphia on MNF. It's mid-November and we're 60% on the season. Keep in mind, this is a marathon, not a sprint!

## 2022 Combined Nationwide Football Newsletter Contest (Regular Season Only)

We are happy to provide you with the records, standings and plays used from the Power Sweep (2-4★ & Underdog), Gold Sheet (Key Releases), Power Plays (1-4.5★), Sports Reporter (Best Bets & Recommended), Winning Points (Best Bets & Preferred), Playbook (3-5★'s and Upset POW), Pointwise (Ratings 1-5) and Powers' Picks (1-4★'s)

College Newsletter	W	L	T	%	Net
<b>Powers' Picks</b>	<b>31</b>	<b>20</b>	<b>1</b>	<b>60.78%</b>	<b>11</b>
Gold Sheet	27	19	0	58.70%	8
Sports Reporter	48	36	1	57.14%	12
Winning Points	37	29	1	56.06%	8
Playbook	22	22	1	50.00%	0
Power Sweep	32	34	1	48.48%	-2
Power Plays	74	83	2	47.13%	-9
Pointwise	39	48	2	44.83%	-9
<b>Combined</b>	<b>310</b>	<b>291</b>	<b>9</b>	<b>51.58%</b>	<b>19</b>

NFL Newsletter	W	L	T	%	Net
<b>Powers' Picks</b>	<b>20</b>	<b>14</b>	<b>1</b>	<b>58.82%</b>	<b>6</b>
Sports Reporter	21	15	2	58.33%	6
Pointwise	25	21	2	54.35%	4
Power Plays	24	21	1	53.33%	3
Power Sweep	30	29	1	50.85%	1
Playbook	14	15	1	48.28%	-1
Winning Points	18	20	2	47.37%	-2
Gold Sheet	16	18	1	47.06%	-2
<b>Combined</b>	<b>168</b>	<b>153</b>	<b>11</b>	<b>52.34%</b>	<b>15</b>

College/NFL Combined Newsletter	W	L	T	%	Net
<b>Powers' Picks</b>	<b>51</b>	<b>34</b>	<b>2</b>	<b>60.00%</b>	<b>17</b>
Sports Reporter	69	51	3	57.50%	18
Gold Sheet	43	37	1	53.75%	6
Winning Points	55	49	3	52.88%	6
Power Sweep	62	63	2	49.60%	-1
Playbook	36	37	2	49.32%	-1
Power Plays	98	104	3	48.51%	-6
Pointwise	64	69	4	48.12%	-5
<b>Combined</b>	<b>478</b>	<b>444</b>	<b>20</b>	<b>51.84%</b>	<b>34</b>

# CFB and NFL Schedules with Vegas and Brad Powers Lines Week 11 November 9th-14th

Wednesday, Nov 16th	Time/TV	Open	Current	BP	Notes
305 Eastern Michigan	6:00	61.5	60	59	
306 Kent St	ESPN2	-7	-7.5	-7	
307 Western Michigan	8:00	49.5	49.5	51	
308 Central Michigan	ESPN2	-8	-10	-7	
309 Miami, Oh	7:00	46.5	44.5	50	
310 Northern Illinois		-3	-1	-4	
Thursday, Nov 17th	Time/TV	Open	Current	BP	Notes
311 Tennessee	8:15	41	41	40	
312 Green Bay	Prime	-1	-3	-2	
313 SMU	7:30	64.5	65	62	
314 Tulane	ESPN	-3	-3.5	-4	
Friday, Nov 18th	Time/TV	Open	Current	BP	Notes
315 South Florida	9:00	52.5	58.5	59	
316 Tulsa	ESPN2	-12	-13	-13	
317 San Diego St	9:45	-17	-14.5	-14	
318 New Mexico	FS1	38.5	37.5	40	
Saturday, Nov 19th	Time/TV	Open	Current	BP	Notes
319 Texas Tech	7:00	49.5	47.5	52	
320 Iowa St	FS1	-3	-3.5	-4	
321 Kansas St	2:00	-5	-7.5	-9	
322 West Virginia	ESPN+	56.5	54.5	53	
323 UL-Lafayette	12:00	54.5	52	53	
324 Florida St	ESPN3	-21	-24	-23	
325 Penn St	3:30	-19	-19	-19	
326 Rutgers	BTN	44.5	45	47	
327 Tennessee	7:00	-19	-22	-20	
328 South Carolina	ESPN	67.5	66	62	
329 NC State	3:30	51.5	45	47	
330 Louisville	ACCN	-3	-4	-7	
331 Syracuse	8:00	54.5	56	54	
332 Wake Forest	ACCN	-9	-10	-8	
333 Duke	12:00	54.5	50	54	
334 Pittsburgh	ACCN	-8	-7.5	-8	
335 Indiana	12:00	40.5	48	50	
336 Michigan St	BTN	-11	-10.5	-10	
337 Virginia Tech	12:00	46.5	46.5	49	
338 Liberty	ESPN+	-8	-10	-9	
339 Miami, FL	3:30	45.5	48	50	
340 Clemson	ESPN	-19	-19	-18	
341 Ohio St	3:30	-25	-27.5	-24	
342 Maryland	ABC	65.5	63	62	
343 Illinois	12:00	44.5	41.5	43	
344 Michigan	ABC	-17	-18	-17	
345 Northwestern	12:00	44.5	45.5	48	
346 Purdue	FS1	-20	-19	-16	
347 Coastal Carolina	3:30	43.5	44.5		
348 Virginia	ESPN3	-1	-2		Cancelled
349 Georgia	3:30	-22	-22.5	-22	
350 Kentucky	CBS	53.5	49	48	
351 Connecticut	12:00	43.5	43.5	45	
352 Army	CBSSN	-10	-10	-11	
353 Houston	2:00	66.5	67.5	67	
354 East Carolina	ESPN+	-6	-6	-7	
355 Cincinnati	4:00	-20	-17	-17	
356 Temple	ESPNU	53.5	51	51	
357 Navy	11:00	54.5	53	53	
358 Central Florida	ESPN2	-19	-16.5	-18	
359 Old Dominion	2:30	45.5	50.5	52	
360 Appalachian St	ESPN+	-15	-16	-14	
361 Georgia St	2:00	56.5	52.5	53	
362 James Madison	ESPN+	-7	-9	-9	
363 Texas	3:30	-7	-9	-9	
364 Kansas	FS1	68.5	63.5	63	
365 Western Kentucky	4:00	56.5	52.5	54	
366 Auburn	SECN	-6	-5.5	-6	
367 Iowa	4:00	32.5	32.5	35	
368 Minnesota	FOX	-3	-3	-5	
369 Georgia Tech	5:30	63.5	63	62	
370 North Carolina	ESPN2	-21	-21	-20	
371 Massachusetts	12:00	52.5	47.5	47	
372 Texas A&M	ESPN+	-29	-33.5	-35	
373 UAB	9:00	53.5	52.5	52	
374 LSU	ESPN2	-14	-14.5	-18	
375 UTSA	1:00	-16	-13	-11	
376 Rice	ESPN+	56.5	59	63	
377 Washington St	2:00	-4	-4	-4	
378 Arizona	P12N	67.5	63	60	

Saturday, Nov 19th	Time/TV	Open	Current	BP	Notes
379 Colorado St	9:00	45.5	43.5	43	
380 Air Force	FS2	-21	-22	-23	
381 Oregon St	2:15	-6	-8	-9	
382 Arizona St	ESPN2	58.5	54	57	
383 San Jose St	9:45	-2	-2	51	
384 Utah St	FS1	54.5	51	-1	
385 Boston College	2:30	46.5	44.5	45	
386 Notre Dame	NBC	-19	-21	-17	
387 Stanford	5:30	44.5	46.5	47	
388 California	P12N	-6	-5	-7	
389 Colorado	9:00	62.5	64	62	
390 Washington	P12N	-31	-31	-30	
391 USC	8:00	-4	-2.5	75	
392 UCLA	FOX	82.5	76	-1	
393 Utah	10:30	55.5	63	64	
394 Oregon	ESPN	-1	-3	-4	
395 Florida	12:00	-15	-14	-14	
396 Vanderbilt	SECN	56.5	57.5	58	
397 TCU	12:00	-2	-2.5	-2	
398 Baylor	FOX	56.5	57.5	60	
399 Ole Miss	7:30	-2	-2.5	61	
400 Arkansas	SECN	59.5	64	-1	
401 South Alabama	3:30	-8	-7.5	-6	
402 Southern Miss	NFLN	45.5	45.5	50	
403 Oklahoma St	7:30	67.5	66	62	
404 Oklahoma	ABC	-6	-7.5	-6	
405 Wisconsin	12:00	-13	-13	-12	
406 Nebraska	ESPN	40.5	39	42	
407 New Mexico St	7:30	49.5	46.5	48	
408 Missouri	ESPNU	-27	-29	-28	
409 UL-Monroe	3:30	45.5	48	49	
410 Troy	ESPN+	-15	-15	-15	
411 Akron	3:30	52.5	47	45	
412 Buffalo	CBSSN	-17	-14	-13	
413 Louisiana Tech	3:30	-1	-3	-3	
414 Charlotte	ESPN3	63.5	64.5	63	
415 Florida Atlantic	3:30	-5	-6	-5	
416 Middle Tennessee	ESPN+	59.5	51	55	
417 FIU	4:00	48.5	51	53	
418 UTEP	ESPN+	-15	-14	-15	
419 Arkansas St	5:00	59.5	51	52	
420 Texas St	ESPN3	-4	-6	-4	
421 Marshall	6:00	-3	-4.5	-4	
422 Georgia Southern	ESPN+	54.5	54	52	
423 Boise St	7:00	-12	-14	-14	
424 Wyoming	CBSSN	44.5	44	46	
425 Fresno St	10:30	-23	-22.5	-20	
426 Nevada	CBSSN	54.5	54	54	
427 UNLV	11:00	-9	-11	-11	
428 Hawaii		59.5	55.5	55	
Sunday, Nov 20th	Time/TV	Open	Current	BP	Notes
451 Carolina	1:00	44	41.5	44	
452 Baltimore	FOX	-12.5	-12	-12	
453 Cleveland	1:00	44	41	41	
454 Buffalo	CBS	-6.5	-8	-7	
455 Philadelphia	1:00	-10	-6.5	-4	
456 Indianapolis	CBS	43.5	43.5	44	
457 Washington	1:00	-2.5	-3	-2	
458 Houston	FOX	40.5	40.5	40	
459 N.Y. Jets	1:00	39.5	38.5	37	
460 New England	CBS	-5.5	-3	-3	
461 Detroit	1:00	45	45	45	
462 N.Y. Giants	FOX	-4	-3	-3	
463 L.A. Rams	1:00	42.5	39	38	
464 New Orleans	FOX	PK	-4	-4	
465 Chicago	1:00	48.5	50	51	
466 Atlanta	FOX	-4.5	-3	-1	
467 Las Vegas	4:05	43.5	41.5	40	
468 Denver	FOX	-2.5	-2.5	-2	
469 Kansas City	8:20	-5.5	-6.5	-4	
470 L.A. Chargers	NBC	50	50	50	
471 Dallas	4:25	47	-1.5	-1	
472 Minnesota	CBS	PK	47.5	47	
473 Cincinnati	4:25	-5.5	-4	-6	
474 Pittsburgh	CBS	42.5	41	40	
Monday, Nov 21st	Time/TV	Open	Current	BP	Notes
475 San Francisco	8:15	-5.5	-8	-8	
476 † Arizona	ESPN	45	43.5	42	



4★ = BEST  
3★ = BETTER  
2★ = GOOD  
1★ = FAIR

## THE POWERS' PACK

**3★ UTAH ST (+2) over San Jose St**  
**3★ UCLA (+2.5) over Usc**  
**2★ Northwestern (+19) over PURDUE**  
**2★ LSU (-14.5) over Uab**  
**2★ Boston College (+21) over NOTRE DAME**

### Games in Rotation Order

#### Wednesday, November 16th

**KENT ST 33 Eastern Michigan 26.** Kent St has played the much tougher schedule (No. 78 vs No. 130 in Sagarin) and is the better team in ypp margin (No. 78 vs No. 99). That's why they're laying more than 7 here. We're passing.

**CENTRAL MICHIGAN 29 Western Michigan 22.** CMU does have big edges in ypp margin (No. 61 vs No. 115) and ypg margin (No. 59 vs No. 105) plus QB Bert Emanuel Jr just ran for 293 yards in their last game. However, this is their biggest favorite role ever in the series and we'll take the big rivalry dog.

**MIAMI, OH 27 Northern Illinois 23.** NIU has played the tougher schedule (No. 97 vs No. 114) and is better in ypp margin (No. 76 vs No. 119). We think this line is short and also lean with the OVER.

#### Thursday, November 17th

**TULANE 33 Smu 29.** Tough spot for SMU traveling on a short week but Tulane is coming off the tough loss to UCF. Tulane is better in all the margin including ppg (No. 17 vs No. 44), ypp margin (No. 22 vs No. 51) and ypg (No. 26 vs No. 49).

#### Friday, November 18th

**TULSA 36 South Florida 23.** USF will be down to a 4th string QB in this game if you count Timmy McClain who transferred out in the summer. Tulsa has the huge edge in ypp margin (No. 73 vs No. 127) but the Golden Hurricane are reeling having failed to cover in 5 straight games.

**San Diego St 27 NEW MEXICO 13.** New Mexico's offense now ranks dead last in ypg and dead last in ypp. Still, it's tough laying more than 2 TD's on the road with a San Diego St offense that ranks No. 117 in ypg.

#### Saturday, November 19th

**IOWA ST 28 Texas Tech 24.** Iowa St is better in ypp margin (No. 56 vs No. 84) and is off a misleading loss to Oklahoma St (+89 yards) while Texas Tech is off a misleading 15-point win vs Kansas (-15 yards). Lean Iowa but like OVER.

**Kansas St 31 WEST VIRGINIA 22.** Kansas St will start Will Howard at QB after Adrian Martinez suffered another injury last week. Howard has plenty of experience. The Wildcats have a huge ypp edge (No. 29 vs No. 110). The Mountaineers are off a big upset of Oklahoma and head coach Neal Brown is coaching for his job with the A.D. fired this week. We lean Kansas St.

**FLORIDA ST 38 UL-Lafayette 15.** We've said it for a few weeks now that the Noles are vastly underrated and now they rank No. 4 in ypp margin and No. 4 in ypg margin. We laid 21 on the Sunday openers thinking it would move closer to 24 and it has. Tough recommending them with Florida on deck.

**Penn St 33 RUTGERS 14.** Rutgers got the cover for us in thrilling fashion last week on these pages (4th&28 TD in final minute) but note they had a 460-453 ypg edge in the game as a double-digit dog. Penn St is now up to No. 6 in our power ratings. We lean OVER.

**Tennessee 41 SOUTH CAROLINA 21.** If a team were going for style points, Tennessee sure looked like it last week as they piled up 724 yards and 66 points vs a solid Missouri defense. Despite South Carolina's 6-4 record they are -31 ypp on the season and off a blowout loss to Florida. Both side and total seem a bit high though.

**LOUISVILLE 27 NC State 20.** Louisville QB Malik Cunningham has been listed as day-to-day here. The Cardinals have played the tougher schedule and have a much better ypp margin (No. 39 vs No. 92). Even if Cunningham is out, we think this number is light.

**WAKE FOREST 31 Syracuse 23.** After a 6-0 start, Syracuse has now lost 4 in a row. Wake is also reeling with 3 straight losses. We trust Wake more to bounce back but are surprised that this line sits at double-digits.

**PITTSBURGH 31 Duke 23.** We say it every week but we've upgraded Duke more than any team in the country in our power ratings and yet our numbers say to play against them here. Pitt's played the tougher schedule (No. 63 vs No. 84) and is better in ypp margin (No. 34 vs No. 47).

**MICHIGAN ST 30 Indiana 20.** Kickoff temps are looking at 20 degrees here as Michigan St goes for bowl eligibility. Indiana has been bad at No. 129 in ypp margin but Michigan St has also been outgained by 86 ypg this year. Lean OVER.

**LIBERTY 29 Virginia Tech.** Liberty comes in off the shocking loss to Connecticut as 13.5-point favorites. It was their worst result of the season but note the Flames did have a 474-318 yard edge. Meanwhile, this is the worst VT team in 3 decades and the Hokies have already lost to Group of 5 Old Dominion this year.

**CLEMSON 34 Miami, FL 16.** Miami got their first cover of the season (vs an FBS opponent) in last week's 35-14 win over Georgia Tech. However, they did get outgained by the Yellow Jackets. Clemson bounced back from the ND loss and won their 39th straight home game last week. Lean OVER.

**Ohio St 43 MARYLAND 19.** The Terps have been struggling at 0-5 ATS in their last 5 games and QB Tagovailoa doesn't look 100-percent. The Buckeyes come in at No. 1 in the country in ypp margin, No. 1 in ppg margin and No. 2 in ypg margin. Still, with the big game vs Michigan on deck, we lean with the home dog.

**MICHIGAN 30 Illinois 13.** This line seems high considering you have the No. 1 and No. 2 defenses in the country in ypg allowed here. Note Illinois is extremely banged up on both sides and we'll be checking the injury report later in the week to see if RB Chase Brown (1,442 rush yards) can go. If so, we lean Illinois.

**2★ Northwestern (plus the points) PURDUE 32 Northwestern 16.** In conference play Purdue is No. 107 in the country in ypp margin while Northwestern is No. 109. Considering cool temps and high winds are in the forecast (impact Purdue's pass game) we'll take the big dog.

Coastal Carolina at Virginia has been cancelled due to the tragic Sunday night shooting that cost 3 Virginia football players their young lives (another is in critical condition).

**Georgia 35 KENTUCKY 13.** Georgia followed up the big win over Tennessee with a blowout win at Mississippi St. We think the Bulldogs could lose a game and still make the CFB Playoffs. Kentucky is off the shocking loss to Vanderbilt as they rank No. 84 in ypp margin (-0.5). We didn't bet side or total.

**ARMY 28 Connecticut 17.** Jim Mora Jr should be up for National Coach of the Year getting UConn to bowl eligibility in year one. Last week they pulled off another stunner beating Liberty. However, the Huskies are still -97 ypg (No. 123) and we lean Army here who needs to win their last 3 to get to bowl eligibility.

**EAST CAROLINA 37 Houston 30.** Two teams heading in opposite directions despite similar 6-4 records. ECU is No. 29 in ypp margin (Houston No. 69). Totals' players note the OVER is 9-1 in Houston games this year.

**Cincinnati 34 TEMPLE 17.** Cincinnati has failed to cover the spread now in 5 straight games. However, the Bearcats still rank No. 9 in ypp margin. Temple has over-achieved in year under Stan Drayton as they've covered 4 straight but rank No. 98 in ypp margin. Pass.

**UCF 35 Navy 17.** UCF has massive edges here in ypp margin (No. 18 vs No. 122), ypg margin (No. 11 vs No. 89) and ppg margin (No. 11 vs No. 92). Navy could be down to a 3rd string QB. We lean UCF.

**APPALACHIAN ST 33 Old Dominion 19.** App St has been incredibly disappointing since the first two games of the season going 2-6 ATS since upsetting Texas A&M. Statistically, they still rank in the Top 30 in ypp and ypg margin. ODU has failed to cover in 4 straight and rank No. 125 in ypp margin. Lean OVER.

**JAMES MADISON 31 Georgia St 22.** Georgia St is off the misleading upset loss to ULM as they had a 535-300 yard edge. Meanwhile, JMU broke their 3-game losing streak and dominated ODU. The Monarchs still rank in the Top 20 in ypp, ypg and ppg margins.

**Texas 36 KANSAS 27.** That was a program shaking loss last week for Texas. We know it's only year two for Sarkisian but he's 11-11 straight up and Tom Herman was fired for going 15-8 SU his last two years. Kansas is No. 12 in the country in ypp margin and won't be intimidated having beat Texas last year.

**AUBURN 30 Western Kentucky 24.** WKU has taken some money in the market place here and we did bet them at "+7.5". The Hilltoppers rank in the Top 20 in ypp, ypg and ppg margins but have played the No. 133 ranked schedule (according to Sagarin that includes FCS). Meanwhile, Auburn has played the No. 6 schedule and is 2-0 ATS under interim coach Cadillac Williams.

**MINNESOTA 20 Iowa 15.** With temps in the teens, this is the lowest total in a FBS vs FBS game in the database we use (KillerSports.com). If you're wondering, totals of 33 or lower are 10-1 to the OVER (including FCS games). Obviously, Iowa is playing their best ball of the season off 3 straight wins but Minnesota is the better team. The Gophers are No. 14 in ypp margin (Iowa No. 82), No. 26 in ypp margin (Iowa No. 57) and No. 8 in ppg margin (Iowa No. 63). The Gophers break their 7-game series losing streak.

**NORTH CAROLINA 41 Georgia Tech 21.** Somehow, NC is 9-1 as the Tar Heels are not in the Top 40 in ypg or ypp margins going 6-0 in games decided by 7-points or less. We think they are fade material but GT will be down to a 3rd-string QB in Zach Gibson here.

**TEXAS A&M 41 Massachusetts 6.** Texas A&M needs a feel good win after losing 6 straight games. There's no one better than UMass who ranks No. 130 in ypp margin. Can the Aggies get that margin here? We lean that way.

**2★ LSU 35 Uab 17.** This spread seems light. Yes, UAB has the better ypp (No. 17 vs No. 33) and ypg (No. 8 vs No. 48) margins but LSU has the huge edge in SOS (No. 4 vs No.126). UAB is 0-5 SU (-28 ppg) and 0-5 ATS (-12 ppg) vs Power 5 teams the last 5 years. Make it 0-6.

**UTSA 37 RICE 26.** UTSA just simply crushed us on these pages last week in their blowout win over Louisiana Tech. Rice needs to win one of their final two games (at North Texas on deck) to get to bowl eligibility for the first time in 8 years. Totals players note that Rice games are 8-2 to the OVER this year.

**Washington St 32 ARIZONA 28.** Arizona is off the huge upset win over UCLA and now has its sights set on bowl eligibility. Wash St does have a huge edge on defense including No. 20 in scoring D (Arizona No. 126). We lean UNDER.

**AIR FORCE 33 Colorado St 10.** Totals players note that Colorado St games are 9-1 to the UNDER this year. The Rams are playing better as of late including a +124.5 ypg edge in their last two games. However, Air Force is in a different class.

**Oregon St 33 ARIZONA ST 24.** Oregon St is not getting enough love nationally or in the betting markets as the Beavers are quietly 8-2 ATS covering by 6.5 ppg. They face an Arizona St team with an interim coach and some QB question marks. We bet Oregon St -6 on Sunday morning and still lean that way.

**3★ UTAH ST 26 San Jose St 25.** We like Utah St here. San Jose St is on a 0-4 ATS run falling short by double-digits each game (60.5 total points or 15 ppg) Right now, San Jose St has a one-dimensional on offense as the last 4 games are averaging 43 rushing ypg. Meanwhile, San Jose St's defense has allowed season-highs (468 yards to Colorado St and 425 yards to San Diego St). The Spartans haven't been the same since a tragic loss to one of their players in a scooter accident. Meanwhile, Utah St is 5-5...going for bowl eligibility. The Aggies are 4-1 SU in their last 5 games and had a 4-string QB in that one loss. Also note it will be 16 degrees at kickoff for the California kids.

**2★ BC (plus the points) NOTRE DAME 31 Boston College 14.** ND is 0-5 ATS this year as a double-digit favorite failing to cover by 13.5 ppg. BC is underrated because QB Morehead is not that big of a downgrade from Jurkovec. Morehead has back-to-back 300-yard games and is 2-0 ATS as a starter.

**CALIFORNIA 27 Stanford 20.** The Big Game will feature two big-time struggling teams as Stanford is banged up and just 2-8 ATS on the season. Meanwhile, Cal has fired their O.C. and OL coach having lost 6 straight games. We lean OVER. **WASHINGTON 46 Colorado 16.** Tough spot for Washington here to be laying such a huge number after notching one of their best wins in years last week (upsetting Top 10 Oregon as 12-point underdogs). The spread is deserved vs a Colorado team dead last in ypp, ypg and ppg margins. Lean UNDER.

**3★ UCLA 38 USC 37.** We like UCLA here. The Bruins were downgraded too much in the market for last week's shocking upset loss to Arizona. They have the better ypp and ypg margins and have played a tougher conference schedule. While USC is likely to get back WR's Addison and Williams, the loss of RB Dye is significant.

**OREGON 34 Utah 30.** Is Bo Nix fully healthy after getting banged up at the end of last week's loss to Washington? The Ducks could be suffering the "dream crusher" here but what would this line be if they held on? They are the more explosive team (No. 21 vs No. 41 in ypp margin).

**Florida 36 VANDERBILT 22.** Vanderbilt broke their 26-game SEC losing streak last week and it's been a successful 2nd-season for Clark Lea. Florida is playing their best ball of the season having won back-to-back. We don't see too much value at the current line.

**Tcu 31 BAYLOR 29.** That was the most impressive performance of the season for the now 10-0 Horned Frogs. They were the better team in Austin. However, is this the dreaded "Buy Low, Sell High" spot with Baylor off a 31-3 home loss? TCU is much better in the stats. We lean OVER.

**ARKANSAS 31 Ole Miss 30.** Arkansas QB KJ Jefferson looks like he will return here after missing last week's game. There's a lot of smoke around Lane Kiffin possibly taking the Auburn job and the Rebels just gave it their all in the Alabama loss. We originally leaned Ole Miss with Jefferson's uncertainty but now lean Arkansas.

**South Alabama 28 SOUTHERN MISS 22.** South Alabama is in the Top 25 when it comes to ypp, ypg and ppg margins. However, Southern Miss has played the tougher schedule (No. 86 vs No. 129) and anything above "+7" is worth a take.

**OKLAHOMA 34 Oklahoma St 28.** Oklahoma has won 16 of the last 19 meetings but one of the losses came in last year's game. The betting market does not like Oklahoma St who despite their 7-3 record are No. 96 in ypp margin and No. 98 in ypg margin. Spencer Sanders did come off the bench to lead the comeback win last week. OU is off back-to-back upset losses. We'd lean with the better HC and QB.

**WISCONSIN 27 Nebraska 15.** Nebraska could be down to a 3rd-string QB here but Casey Thompson was seen throwing in practice this week. We're guessing Wisconsin needs to win their last two games for Jim Leonhard to get the full-time job. The Badgers are No. 16 in ypp margin. If Thompson plays, we lean OVER.

**MISSOURI 38 New Mexico St 10.** That was a humbling loss for a Missouri team especially on the defensive side. The Tigers gave up 724 yards to the Volunteers last week. Obviously, Missouri has played the much tougher schedule (No. 21 vs No. 151) but these two teams are both -0.1 in ypp margin.

**TROY 32 UL-Monroe 17.** Terry Bowden has done a good job getting ULM to 4 wins as the Warhawks pulled another big upset last week. They're up against here though vs a Troy defense that ranks No. 9 in scoring and No. 11 in ypp.

**BUFFALO 29 Akron 16.** Check the weather forecast as several feet of snow is expected in Buffalo this weekend. You can throw all the other stats and handicaps out the window if that's the case. We're taking dog and UNDER.

**Louisiana Tech 33 CHARLOTTE 30.** Charlotte has not shown quit yet as last week's 10-point loss was misleading with Middle Tennessee getting a blocked punt TD. Meanwhile, LT's starting QB was a shocking late scratch and LT got destroyed by UTSA last week. If McNeil returns, we like LT, if not all bets are off.

**Florid Atlantic 30 MIDDLE TENNESSEE 25.** Obviously, FAU is the better team in the stats including +21 ypg vs Middle Tennessee being -48 ypg. Also MT is off a misleading win vs Charlotte. We lean OVER.

**UTEP 34 Florida International 19.** Tough laying 2 TD's at home with this UTEP team but they are only -11 ypp while FIU is -113 ypg. The Golden Panthers have been completely non-competitive the last two weeks.

**TEXAS ST 28 Arkansas St 24.** Maybe the last chance for Texas St head coach Jake Spavital to save his job. He's facing an Arkansas St team that was completely outplayed by UMass last week (-200 yards). Tough laying it with this Texas St offense.

**Marshall 28 GEORGIA SOUTHERN 24.** Marshall has back-to-back solid performances as the Thundering Herd rank No. 21 in ypp margin (+109). Georgia Southern is n is banged up at the skill position and now rank No. 100 in ypp margin.

**Boise St 30 WYOMING 16.** We think 7-3 Wyoming is a fraudulent team as the Cowbys are -37 ypg. Meanwhile, Boise St ranks in the Top 20 of ypg margin (+110) and ypp margin (+1.18). A little money has showed on Boise throughout the week. We're passing at the current numbers.

**Fresno St NEVADA 17.** Nevada is bad...we mean really bad as the Wold Pack are No. 128 in ypp margin while Fresno ranks No. 46. Still, we think you're paying a premium wanting to fade Nevada here. They were 21-point home underdogs at home to Boise last week and we feel Boise is better than Fresno.

**Unlv 33 HAWAII 22.** UNLV comes in losers of 5 straight games although it should be noted the Rebels were at least a 5-point underdog in all 5 games and played nearly 3 of them without their starting QB. That gives them some value here vs a Hawaii team that is No. 129 in ypp margin (UNLV is No. 72). Still, tough laying doubles on the road with UNLV. If the line holds at 11, it will be the first time since 2008 that they are a double-digit road favorite and their highest spread since 2001.

#### Tuesday, November 22nd

**Ball St at Miami, Oh.** As of press-time we don't see the results of the Miami/NIU game. We anticipate Miami to be the slightest of favorites here.

**Bowling Green at Ohio.** After BG's thrilling upset win over Toledo on Tuesday and Ohio possibly losing QB Rourke for a long period, this game got more interesting. Ohio, with a win, would take home the division. BG needs a Buffalo loss and a win. We think Ohio will be around a TD favorite.

## Pics of Brad's Bets vs Circa Openers

80 pending, total cost \$42,680.00			
Sports Bet	\$550.00	Sports Bet	\$550.00
Placed Nov 13, 11:02 AM		Placed Nov 13, 11:04 AM	
Nov-19 NCAA FOOTBALL		Nov-19 NCAA FOOTBALL	
GROUP OF 5		GROUP OF 5	
[324] FLORIDA ST -21/-110		[347] COASTAL CAR OV 43%-110	
Sports Bet	\$550.00	Sports Bet	\$550.00
Placed Nov 13, 11:01 AM		Placed Nov 13, 11:04 AM	
Nov-19 NCAA FOOTBALL		Nov-19 NCAA FOOTBALL	
POWER 5		GROUP OF 5	
[322] W VIRGINIA UN 56%-110		[348] VIRGINIA -21/-110	
Sports Bet	\$550.00	Sports Bet	\$550.00
Placed Nov 13, 11:01 AM		Placed Nov 13, 11:04 AM	
Nov-19 NCAA FOOTBALL		Nov-19 NCAA FOOTBALL	
POWER 5		POWER 5	
[321] KANSAS ST -81/-110		[345] N' WESTERN +18%-110	
Sports Bet	\$550.00	Sports Bet	\$550.00
Placed Nov 13, 11:01 AM		Placed Nov 13, 11:04 AM	
Nov-19 NCAA FOOTBALL		Nov-19 NCAA FOOTBALL	
GROUP OF 5		POWER 5	
[318] NEW MEXICO +14%-110		[342] MARYLAND UN 65%-110	
Sports Bet	\$1,100.00	Sports Bet	\$550.00
Placed Nov 13, 11:01 AM		Placed Nov 13, 11:03 AM	
Nov-19 NCAA FOOTBALL		Nov-19 NCAA FOOTBALL	
GROUP OF 5		POWER 5	
[315] S FLORIDA OV 52%-110		[339] MIAMI FL OV 45%-110	
Sports Bet	\$550.00	Sports Bet	\$1,100.00
Placed Nov 13, 11:00 AM		Placed Nov 13, 11:03 AM	
Nov-16 NCAA FOOTBALL		Nov-19 NCAA FOOTBALL	
GROUP OF 5		POWER 5	
[308] MIAMI OH OV 46%-110		[335] INDIANA OV 42%-110	
Sports Bet	\$1,100.00	Sports Bet	\$550.00
Placed Nov 13, 11:00 AM		Placed Nov 13, 11:02 AM	
Nov-15 NCAA FOOTBALL		Nov-19 NCAA FOOTBALL	
POWER 5		POWER 5	
[303] OHIO OV 50%-110		[330] LOUISVILLE UN 49/-110	
Sports Bet	\$1,100.00	Sports Bet	\$550.00
Placed Nov 13, 11:00 AM		Placed Nov 13, 11:02 AM	
Nov-15 NCAA FOOTBALL		Nov-19 NCAA FOOTBALL	
GROUP OF 5		POWER 5	
[301] BOWLING GRN OV 47%-110		[330] LOUISVILLE -3%-110	
Sports Bet	\$550.00	Sports Bet	\$550.00
Placed Nov 13, 11:07 AM		Placed Nov 13, 11:08 AM	
Nov-19 NCAA FOOTBALL		Nov-19 NCAA FOOTBALL	
GROUP OF 5		GROUP OF 5	
[272] TEXAS A&M UN 52%-110		[384] UTAH ST UN 52/-110	
Sports Bet	\$550.00	Sports Bet	\$1,100.00
Placed Nov 13, 11:06 AM		Placed Nov 13, 11:08 AM	
Nov-19 NCAA FOOTBALL		Nov-19 NCAA FOOTBALL	
POWER 5		POWER 5	
[368] MINNESOTA -21/-110		[381] OREGON ST -6/-110	
Sports Bet	\$550.00	Sports Bet	\$550.00
Placed Nov 13, 11:06 AM		Placed Nov 13, 11:08 AM	
Nov-19 NCAA FOOTBALL		Nov-19 NCAA FOOTBALL	
POWER 5		GROUP OF 5	
[367] IOWA OV 32%-110		[380] AIR FORCE UN 45%-110	
Sports Bet	\$550.00	Sports Bet	\$550.00
Placed Nov 13, 11:06 AM		Placed Nov 13, 11:08 AM	
Nov-19 NCAA FOOTBALL		Nov-19 NCAA FOOTBALL	
GROUP OF 5		POWER 5	
[385] W KENTUCKY OV 50%-110		[378] ARIZONA UN 65/-110	
Sports Bet	\$550.00	Sports Bet	\$550.00
Placed Nov 13, 11:06 AM		Placed Nov 13, 11:07 AM	
Nov-19 NCAA FOOTBALL		Nov-19 NCAA FOOTBALL	
POWER 5		GROUP OF 5	
[364] KANSAS UN 88%-110		[376] RICE +14%-110	
Sports Bet	\$550.00	Sports Bet	\$550.00
Placed Nov 13, 11:05 AM		Placed Nov 13, 11:07 AM	
Nov-19 NCAA FOOTBALL		Nov-19 NCAA FOOTBALL	
GROUP OF 5		GROUP OF 5	
[382] J MADISON -81/-110		[375] UTSA OV 56%-110	
Sports Bet	\$550.00	Sports Bet	\$1,100.00
Placed Nov 13, 11:05 AM		Placed Nov 13, 11:07 AM	
Nov-19 NCAA FOOTBALL		Nov-19 NCAA FOOTBALL	
GROUP OF 5		GROUP OF 5	
[359] ODU OV 45%-110		[374] LSU -14/-110	
Sports Bet	\$550.00	Sports Bet	\$550.00
Placed Nov 13, 11:05 AM		Placed Nov 13, 11:07 AM	
Nov-19 NCAA FOOTBALL		Nov-19 NCAA FOOTBALL	
GROUP OF 5		GROUP OF 5	
[354] E CAROLINA -61/-110		[372] TEXAS A&M -32/-110	
Sports Bet	\$550.00	Sports Bet	\$550.00
Placed Nov 13, 11:10 AM		Placed Nov 13, 11:18 AM	
Nov-19 NCAA FOOTBALL		Nov-19 NCAA FOOTBALL	
GROUP OF 5		GROUP OF 5	
[402] SO MISS +7/-110		[307] W MICHIGAN OV 48%-110	
Sports Bet	\$550.00	Sports Bet	\$550.00
Placed Nov 13, 11:10 AM		Placed Nov 13, 11:12 AM	
Nov-19 NCAA FOOTBALL		Nov-19 NCAA FOOTBALL	
POWER 5		GROUP OF 5	
[399] OLE MISS -2/-110		[426] NEVADA +23/-110	
Sports Bet	\$1,100.00	Sports Bet	\$550.00
Placed Nov 13, 11:09 AM		Placed Nov 13, 11:12 AM	
Nov-19 NCAA FOOTBALL		Nov-19 NCAA FOOTBALL	
POWER 5		GROUP OF 5	
[393] UTAH OV 55%-110		[417] FIU OV 48%-110	
Sports Bet	\$550.00	Sports Bet	\$550.00
Placed Nov 13, 11:09 AM		Placed Nov 13, 11:11 AM	
Nov-19 NCAA FOOTBALL		Nov-19 NCAA FOOTBALL	
POWER 5		GROUP OF 5	
[394] OREGON -3/-110		[411] AKRON +17/-110	
Sports Bet	\$550.00	Sports Bet	\$550.00
Placed Nov 13, 11:09 AM		Placed Nov 13, 11:11 AM	
Nov-19 NCAA FOOTBALL		Nov-19 NCAA FOOTBALL	
POWER 5		GROUP OF 5	
[392] UCLA UN 77%-110		[409] UL MONROE OV 45%-110	
Sports Bet	\$1,100.00	Sports Bet	\$550.00
Placed Nov 13, 11:09 AM		Placed Nov 13, 11:11 AM	
Nov-19 NCAA FOOTBALL		Nov-19 NCAA FOOTBALL	
POWER 5		POWER 5	
[392] UCLA +3/-110		[405] WISCONSIN OV 40%-110	
Sports Bet	\$550.00	Sports Bet	\$1,100.00
Placed Nov 13, 11:09 AM		Placed Nov 13, 11:11 AM	
Nov-19 NCAA FOOTBALL		Nov-19 NCAA FOOTBALL	
POWER 5		POWER 5	
[388] CALIFORNIA -6/-110		[404] OKLAHOMA UN 67%-110	
Sports Bet	\$550.00	Sports Bet	\$550.00
Placed Nov 13, 11:09 AM		Placed Nov 13, 11:10 AM	
Nov-19 NCAA FOOTBALL		Nov-19 NCAA FOOTBALL	
POWER 5		GROUP OF 5	
[387] STANFORD OV 44%-110		[401] S ALABAMA OV 45%-110	



# Week 12 College Football Power Ratings (Vegas Ratings Not AP Poll Style)

Rk	Team	8/24	11/16	Diff	Rk	Team	8/24	11/16	Diff	Rk	Team	8/24	11/16	Diff
1.	Georgia	94.64	98.64	+4.0	49.	West Virginia	71.00	70.50	-0.5	99.	Central Michigan	61.76	57.76	-4.0
2.	Ohio State	96.70	98.20	+1.5	51.	Syracuse	68.55	70.05	+1.5	100.	Georgia Tech	61.18	57.68	-3.5
3.	Alabama	97.97	92.97	-5.0	52.	Missouri	68.41	69.91	+1.5	101.	Southern Miss	57.65	57.65	0.0
4.	Tennessee	81.74	90.24	+8.5	53.	Kansas	59.33	69.83	+10.5	102.	Utah State	64.58	57.58	-7.0
5.	Michigan	86.42	89.92	+3.5	54.	James Madison	59.20	69.70	+10.5	103.	Northern Illinois	61.56	57.56	-4.0
6.	Penn State	80.99	83.49	+2.5	55.	BYU	78.99	69.49	-9.5	104.	Buffalo	56.67	56.67	0.0
7.	TCU	73.20	82.70	+9.5	56.	UTSA	66.42	69.42	+3.0	105.	Wyoming	55.35	56.35	+1.0
8.	Texas	80.36	82.36	+2.0	57.	Michigan State	79.30	69.30	-10.0	106.	Old Dominion	58.65	56.15	-2.5
9.	Utah	83.71	82.21	-1.5	58.	Air Force	70.65	69.15	-1.5	107.	Rice	51.45	55.95	+4.5
10.	Florida State	76.02	82.02	+6.0	59.	South Carolina	73.58	68.58	-5.0	108.	Ball State	52.66	55.66	+3.0
11.	LSU	78.93	81.93	+3.0	60.	W. Kentucky	64.51	68.51	+4.0	109.	UTEP	55.82	55.32	-0.5
11.	Oregon	79.43	81.93	+2.5	61.	Duke	52.66	68.16	+15.5	110.	Eastern Michigan	55.24	55.24	0.0
13.	Clemson	87.27	81.27	-6.0	62.	Liberty	65.90	67.89	+2.0	111.	Middle Tennessee	56.59	55.09	-1.5
14.	USC	78.93	80.93	+2.0	63.	UAB	68.35	67.85	-0.5	112.	Miami (OH)	61.66	54.66	-7.0
15.	Ole Miss	79.65	80.65	+1.0	64.	Troy	61.26	67.76	+6.5	112.	UL-Monroe	48.66	54.66	+6.0
16.	Kansas State	75.64	80.14	+4.5	65.	Fresno State	71.52	67.52	-4.0	114.	Texas State	51.05	53.55	+2.5
17.	Mississippi State	79.19	78.69	-0.5	66.	Appalachian St	69.84	67.34	-2.5	115.	Bowling Green	53.10	53.39	+0.3
18.	UCLA	75.49	77.99	+2.5	67.	South Alabama	55.79	67.29	+11.5	116.	Western Michigan	60.11	53.11	-7.0
19.	Notre Dame	84.79	77.79	-7.0	68.	Houston	73.21	66.71	-6.5	117.	Temple	48.99	52.99	+4.0
20.	Washington	73.19	77.69	+4.5	69.	Arizona	61.61	66.61	+5.0	118.	Connecticut	43.40	52.90	+9.5
21.	Minnesota	77.16	77.66	+0.5	70.	Arizona State	68.27	66.27	-2.0	119.	USF	63.53	52.53	-11.0
22.	Baylor	79.48	77.48	-2.0	71.	Memphis	67.15	66.15	-1.0	120.	Louisiana Tech	54.88	50.88	-4.0
23.	Florida	76.80	76.80	0.0	72.	Miami (FL)	81.82	65.82	-16.0	121.	Arkansas State	50.79	50.79	0.0
24.	Oklahoma	83.51	76.51	-7.0	73.	Marshall	66.25	65.25	-1.0	122.	Colorado	61.19	50.69	-10.5
24.	Oregon State	72.51	76.51	+4.0	74.	Toledo	65.45	63.45	-2.0	123.	Colorado State	58.69	49.19	-9.5
26.	Illinois	65.88	76.38	+10.5	75.	San Jose State	59.12	63.12	+4.0	124.	Charlotte	53.15	47.15	-6.0
27.	Wisconsin	80.61	76.11	-4.5	76.	North Texas	59.09	63.09	+4.0	125.	New Mexico	48.75	46.25	-2.5
28.	Purdue	75.16	75.66	+0.5	77.	Georgia State	65.05	63.05	-2.0	126.	Akron	46.96	45.96	-1.0
29.	UCF	74.61	75.61	+1.0	78.	Indiana	66.13	62.62	-3.5	127.	Nevada	54.73	45.73	-9.0
30.	Louisville	75.43	75.43	0.0	79.	California	66.36	62.36	-4.0	128.	New Mexico St	43.46	45.46	+2.0
31.	Arkansas	79.82	75.32	-4.5	80.	Rutgers	63.26	62.26	-1.0	129.	Hawaii	49.74	43.74	-6.0
32.	Iowa State	74.14	75.14	+1.0	81.	Virginia	69.73	62.23	-7.5	130.	Massachusetts	41.54	40.54	-1.0
33.	Pittsburgh	79.06	75.06	-4.0	82.	Florida Atlantic	58.39	61.89	+3.5	131.	FIU	41.22	40.22	-1.0
34.	Wake Forest	70.13	74.63	+4.5	83.	UL-Lafayette	64.88	61.88	-3.0	<b>Biggest Gains From Start of Season</b>		<b>Biggest Losses From Start of Season</b>		
35.	Iowa	77.23	74.23	-3.0	84.	Vanderbilt	55.76	61.76	+6.0	Duke	+15.5	Miami (FL)	-16.0	
36.	North Carolina	74.10	74.10	0.0	85.	Army	66.13	61.63	-4.5	South Alabama	+11.5	Nebraska	-15.0	
37.	Texas Tech	70.81	73.81	+3.0	86.	Coastal Carolina	63.54	61.54	-2.0	Illinois	+10.5	USF	-11.0	
38.	Kentucky	78.61	73.61	-5.0	87.	Nebraska	76.48	61.48	-15.0	Kansas	+10.5	Boston College	-11.0	
39.	Cincinnati	77.87	73.37	-4.5	88.	Tulsa	63.23	61.23	-2.0	James Madison	+10.5	Texas A&M	-11.0	
40.	Texas A&M	84.28	73.28	-11.0	89.	San Diego State	65.83	60.33	-5.5	Connecticut	+9.5	Colorado	-10.5	
41.	Washington State	65.55	73.05	+7.5	90.	Kent State	55.67	60.17	+4.5	TCU	+9.5	Michigan State	-10.0	
42.	Boise State	74.62	72.62	-2.0	91.	Virginia Tech	66.50	60.00	-6.5	Tennessee	+8.5	NC State	-10.0	
43.	Maryland	73.39	72.39	-1.0	92.	Stanford	68.49	59.98	-8.5	Washington St	+7.5	Colorado State	-9.5	
44.	East Carolina	66.26	72.26	+6.0	93.	Navy	59.38	59.88	+0.5	Troy	+6.5	Oklahoma State	-9.5	
45.	SMU	70.70	71.70	+1.0	94.	Georgia Southern	55.36	59.86	+4.5	Vanderbilt	+6.0	BYU	-9.5	
46.	Auburn	78.13	71.63	-6.5	95.	Northwestern	63.66	59.16	-4.5	UL-Monroe	+6.0	Nevada	-9.0	
47.	Tulane	66.09	71.09	+5.0	96.	Boston College	69.62	58.62	-11.0	Florida State	+6.0	Stanford	-8.5	
48.	Oklahoma State	80.27	70.77	-9.5	97.	Ohio	55.31	58.31	+3.0	East Carolina	+6.0	Virginia	-7.5	
49.	NC State	80.50	70.50	-10.0	98.	UNLV	54.84	57.84	+3.0					

## Week 12 College Football Power Ratings by Conference

SEC			Big 12			Pac-12			Mountain West			CUSA		
Rk	Team	Rating	Rk	Team	Rating	Rk	Team	Rating	Rk	Team	Rating	Rk	Team	Rating
1.	Georgia	98.64	7.	TCU	82.70	9.	Utah	82.21	42.	Boise State	72.62	56.	UTSA	69.42
3.	Alabama	92.97	8.	Texas	82.36	11.	Oregon	81.93	58.	Air Force	69.15	60.	Western Kentucky	68.51
4.	Tennessee	90.24	16.	Kansas State	80.14	14.	USC	80.93	65.	Fresno State	67.52	63.	UAB	67.85
11.	LSU	81.93	22.	Baylor	77.48	18.	UCLA	77.99	75.	San Jose State	63.12	76.	North Texas	63.09
15.	Ole Miss	80.65	24.	Oklahoma	76.51	20.	Washington	77.69	89.	San Diego State	60.33	82.	Florida Atlantic	61.89
17.	Mississippi State	78.69	32.	Iowa State	75.14	24.	Oregon State	76.51	98.	UNLV	57.84	107.	Rice	55.95
23.	Florida	76.80	37.	Texas Tech	73.81	41.	Washington State	73.05	102.	Utah State	57.58	109.	UTEP	55.32
31.	Arkansas	75.32	48.	Oklahoma State	70.77	69.	Arizona	66.61	105.	Wyoming	56.35	111.	Middle Tennessee	55.09
38.	Kentucky	73.61	49.	West Virginia	70.50	70.	Arizona State	66.27	123.	Colorado State	49.19	120.	Louisiana Tech	50.88
40.	Texas A&M	73.28	53.	Kansas	69.83	79.	California	62.36	125.	New Mexico	46.25	124.	Charlotte	47.15
46.	Auburn	71.63	<b>ACC</b>			92.	Stanford	59.98	127.	Nevada	45.73	131.	FIU	40.22
52.	Missouri	69.91	<b>Big Ten</b>			122.	Colorado	50.69	129.	Hawaii	43.74	<b>Sun Belt</b>		
59.	South Carolina	68.58	Rk	Team	Rating	<b>American</b>			<b>MAC</b>			Rk	Team	Rating
84.	Vanderbilt	61.76	10.	Florida State	82.02	Rk	Team	Rating	Rk	Team	Rating	54.	James Madison	69.70
			13.	Clemson	81.27	29.	UCF	75.61	74.	Toledo	63.45	64.	Troy	67.76
			30.	Louisville	75.43	39.	Cincinnati	73.37	90.	Kent State	60.17	66.	Appalachian State	67.34
			33.	Pittsburgh	75.06	44.	East Carolina	72.26	97.	Ohio	58.31	67.	South Alabama	67.29
			34.	Wake Forest	74.63	45.	SMU	71.70	99.	Central Michigan	57.76	73.	Marshall	65.25
			36.	North Carolina	74.10	47.	Tulane	71.09	103.	Northern Illinois	57.56	77.	Georgia State	63.05
			49.	NC State	70.50	68.	Houston	66.71	104.	Buffalo	56.67	83.	UL-Lafayette	61.88
			51.	Syracuse	70.05	71.	Memphis	66.15	108.	Ball State	55.66	86.	Coastal Carolina	61.54
			61.	Duke	68.16	88.	Tulsa	61.23	110.	Eastern Michigan	55.24	94.	Georgia Southern	59.86
			72.	Miami (FL)	65.82	93.	Navy	59.88	112.	Miami (OH)	54.66	101.	Southern Miss	57.65
			81.	Virginia	62.23	117.	Temple	52.99	115.	Bowling Green	53.39	106.	Old Dominion	56.15
			91.	Virginia Tech	60.00	119.	USF	52.53	116.	Western Michigan	53.11	112.	UL-Monroe	54.66
			96.	Boston College	58.62				126.	Akron	45.96	114.	Texas State	53.55
			100.	Georgia Tech	57.68							121.	Arkansas State	50.79

## Week 12 Computer Projected Lines for Every CFB Game

For the past six seasons we have posted computer projected lines for every game on Wednesday. **Games where there was of difference of more than 3 points saw our computer lines actually beat the Vegas line at a 421-355-12 (54%) clip! So far this season those games are 36-30-1.** That's pretty solid and actually better than our own handicapping in some seasons. Keep in mind, these computer lines don't take into consideration off-the-field factors like revenge or flat spots or if there are late-week injuries. They are basically a power-rating number difference between the two teams that also takes into consideration the home field advantage.

Of the 10 games where our computer is off more than 3 points compared to the Vegas line (highlighted), our favorite team this week to back would be **LSU -14.5**.

The Comp column is the computer projected line and the Diff column is the difference between the Vegas line and the Computer line. "+" numbers in the difference column say back the underdog. "-" numbers in the difference column say back the favorite. Let us know if you have questions.

Wednesday, Nov 16th	Line	Comp	Diff	Saturday, Nov 19th	Line	Comp	Diff
305 Eastern Michigan				367 Iowa			
306 Kent St	-7.5	-6.7	+0.8	368 Minnesota	-3.0	-6.2	-3.2
307 Western Michigan				369 Georgia Tech			
308 Central Michigan	-10.0	-6.9	+3.1	370 North Carolina	-21.0	-19.2	+1.8
309 Miami, Oh				371 Massachusetts			
310 Northern Illinois	-1.0	-5.4	-4.4	372 Texas A&M	-33.5	-36.7	-3.2
Thursday, Nov 17th	Line	Comp	Diff	373 UAB			
313 SMU				374 LSU	-14.5	-17.8	-3.3
314 Tulane	-3.5	-1.9	+1.6	375 UTSA			
Friday, Nov 18th	Line	Comp	Diff	376 Rice	+13.0	+11.7	+1.3
315 South Florida				377 Washington St			
316 Tulsa	-13.0	-11.0	+2.0	378 Arizona	+4.0	+4.2	-0.2
317 San Diego St				379 Colorado St			
318 New Mexico	+14.5	+12.3	+2.2	380 Air Force	-22.0	-23.0	-1.0
Saturday, Nov 19th	Line	Comp	Diff	381 Oregon St			
319 Texas Tech				382 Arizona St	+8.0	+7.2	+0.8
320 Iowa St	-3.5	-4.3	-0.8	383 San Jose St			
321 Kansas St				384 Utah St	+2.0	+2.8	-0.8
322 West Virginia	+7.5	+6.6	+0.9	385 Boston College			
323 UL-Lafayette				386 Notre Dame	-21.0	-22.7	-1.7
324 Florida St	-24.0	-22.9	+1.1	387 Stanford			
325 Penn St				388 California	-5.0	-4.9	+0.1
326 Rutgers	+19.0	+19.0	0.0	389 Colorado			
327 Tennessee				390 Washington	-31.0	-30.3	+0.7
328 South Carolina	+22.0	+18.7	+3.3	391 USC			
329 NC State				392 UCLA	+2.5	+0.4	+2.1
330 Louisville	-4.0	-7.4	-3.4	393 Utah			
331 Syracuse				394 Oregon	-3.0	-3.0	0.0
332 Wake Forest	-10.0	-6.8	+3.2	395 Florida			
333 Duke				396 Vanderbilt	+14.0	+13.3	+0.7
334 Pittsburgh	-7.5	-9.7	-2.2	397 TCU			
335 Indiana				398 Baylor	+2.5	+2.2	+0.3
336 Michigan St	-10.5	-9.7	+0.8	399 Ole Miss			
337 Virginia Tech				400 Arkansas	+2.5	+2.6	-0.1
338 Liberty	-10.0	-9.9	+0.1	401 South Alabama			
339 Miami, FL				402 Southern Miss	+7.5	+7.1	+0.4
340 Clemson	-19.0	-19.5	-0.5	403 Oklahoma St			
341 Ohio St				404 Oklahoma	-7.5	-9.7	-2.2
342 Maryland	+27.5	+23.8	+3.7	405 Wisconsin			
343 Illinois				406 Nebraska	+13.0	+11.9	+1.1
344 Michigan	-18.0	-17.3	+0.7	407 New Mexico St			
345 Northwestern				408 Missouri	-29.0	-27.2	+1.8
346 Purdue	-19.0	-19.0	+0.0	409 UL-Monroe			
347 Coastal Carolina				410 Troy	-15.0	-15.4	-0.4
348 Virginia	Cancelled			411 Akron			
349 Georgia				412 Buffalo	-14.0	-13.0	+1.0
350 Kentucky	+22.5	+22.0	+0.5	413 Louisiana Tech			
351 Connecticut				414 Charlotte	+3.0	+1.7	+1.3
352 Army	-10.0	-11.2	-1.2	415 Florida Atlantic			
353 Houston				416 Middle Tennessee	+6.0	+4.3	+1.7
354 East Carolina	-6.0	-7.8	-1.8	417 FIU			
355 Cincinnati				418 UTEP	-14.0	-16.9	-2.9
356 Temple	+17.0	+18.4	-1.4	419 Arkansas St			
357 Navy				420 Texas St	-6.0	-4.5	+1.5
358 Central Florida	-16.5	-19.0	-2.5	421 Marshall			
359 Old Dominion				422 Georgia Southern	+4.5	+2.9	+1.6
360 Appalachian St	-16.0	-14.2	+1.8	423 Boise St			
361 Georgia St				424 Wyoming	+14.0	+13.5	+0.5
362 James Madison	-9.0	-8.9	+0.1	425 Fresno St			
363 Texas				426 Nevada	+22.5	+19.3	+3.2
364 Kansas	+9.0	+11.0	-2.0	427 UNLV			
365 Western Kentucky				428 Hawaii	+11.0	+11.9	-0.9
366 Auburn	-5.5	-6.4	-0.9				

## Betting CFB Openers

Every Sunday in Vegas at 11am PT, Circa Sports is the first book in the world to release CFB lines and we bet them every week. We think it's the best value bets we make all week. 2020 was the first season where we tracked every single bet we made and posted them in the weekly newsletters. We were very pleased with our 119-76-3 (61%) record on these Sunday bets with an average line value of 2.6 ppg! In 2021, we were 224-196-5 (53%) vs the Circa openers with an average line value of 1.8 ppg.

### CFB Records (YTD):

VIP: 73-46-1 +19.85 units (CLV 100-11-9 +1.61 ppg)  
Leans: 12-14  
Newsletter: 31-20-1 +22.6 units (CLV 44-5-3 +0.9 ppg)  
Covers Release Show: 27-27 (CLV 40-7-7 +1.07 ppg)

### Personal Bets (YTD):

FBS vs FBS: 337-271-11 (CLV 454-119-4 +2.07 ppg)  
FBS vs FCS: 47-23-1 (CLV 64-5-2 +3.56 ppg)  
FCS vs FCS: 148-121 (CLV 206-31-32 +1.72 ppg)  
Overall: 532-415-12 (CLV 724-155-80 +2.08 ppg)  
Vs Circa Openers: 258-217-9 (CLV 341-101-42 +1.7 ppg)  
Summer GOY: 28-16 (CLV 31-12-1 +3.16 ppg)

### NFL Records (YTD):

VIP: 21-17-1 +2.375 units  
Leans: 48-47-6  
Prop Leans: 3-1  
Preseason Leans: 6-4  
Newsletter: 20-14-1 +7.5 units.

### Week 12 CFB Circa Bets (in rotation order):

(301) Bowling Green OVER 47.5-WIN  
(303) Ohio OVER 50.5-LOSS  
(307) Western Michigan OVER 49.5  
(309) Miami, Oh OVER 46.5  
(315) South Florida OVER 52.5  
(318) New Mexico +14.5  
(319) Texas Tech OVER 47  
(321) Kansas St -6.5  
(322) West Virginia UNDER 56.5  
(324) Florida St -21  
(330) Louisville -3.5  
(330) Louisville UNDER 49  
(335) Indiana OVER 42.5  
(339) Miami, FL OVER 45.5  
(342) Maryland UNDER 66.5  
(343) Illinois +17.5  
(345) Northwestern +18.5  
(347) Coastal Carolina OVER 43.5  
(348) Virginia -2.5  
(354) East Carolina -6.5  
(359) Old Dominion OVER 45.5  
(362) James Madison -8.5  
(364) Kansas UNDER 68.5  
(365) Western Kentucky OVER 50.5  
(365) Western Kentucky +7.5  
(367) Iowa OVER 32.5  
(368) Minnesota -2.5  
(372) Texas A&M UNDER 52.5  
(372) Texas A&M -32  
(374) LSU -14  
(375) UTSA OVER 56.5  
(376) Rice +14.5  
(378) Arizona UNDER 65  
(380) Air Force UNDER 45.5  
(381) Oregon St -6  
(384) Utah St UNDER 52  
(385) Boston College +21  
(387) Stanford OVER 44.5  
(358) California -6  
(392) UCLA UNDER 77.5  
(392) UCLA +3  
(393) Utah OVER 55.5  
(394) Oregon -3  
(399) Ole Miss -2  
(401) South Alabama OVER 45.5  
(402) Southern Miss +7  
(403) Oklahoma St +7  
(404) Oklahoma UNDER 67.5  
(405) Wisconsin OVER 40.5  
(409) UL-Monroe OVER 45.5  
(411) Akron +17  
(417) FIU OVER 48.5  
(426) Nevada +23

### Summer GOY Bets:

USC +5 at UCLA (South Point)  
Oklahoma St +11.5 at Oklahoma (South Point)



4★ = BEST  
3★ = BETTER  
2★ = GOOD  
1★ = FAIR

## THE POWERS' PACK

**2★ INDIANAPOLIS (+6.5) over Philadelphia**  
**1★ L.A. CHARGERS (+6.5) over Kansas City**  
**2★ 6-point teaser (-120) Buffalo -2/San Fran -2**

### Games in Rotation Order

Thursday, November 17th

**GREEN BAY 21 Tennessee 19.** The Packers ended their 1-5 SU/ATS run with an upset over Dallas last week in OT. GB did have a 6.8-5.3 ypp edge but had to rally down double-digits. Meanwhile, Tennessee welcomed back QB Tannehill and proceeded to cover their 7th consecutive game (6-1 SU). Early week money is on the Packers as GB is better in ypp margin and has played the tougher schedule. We need a "+3.5" to show on Tennessee to be heavily involved but lean Tennessee.

Sunday, November 20th

**BALTIMORE 28 Carolina 16.** Baltimore comes in off the bye. The Ravens have remarkably had a double-digit lead in all 9 games this year (unfortunately have 3 losses). They have played the much tougher schedule (No. 4 vs No. 30). Carolina also has extra time to prep after upsetting Atlanta last Thursday in the rain. They've actually played better with the interim coach (3-2 ATS) so far. We could make a case for either side. We're passing.

**BUFFALO 24 Cleveland 17.** Check the weather forecast as Buffalo is expected to get multiple "feet" of snow this weekend. We've seen the total crash down from a high of "47.5". We haven't seen too much movement on the side as Buffalo is off back-to-back upset losses but still ranks No. 1 in ypp margin despite playing the No. 2 toughest schedule. QB Josh Allen didn't look 100% last week and had turnover issues. Cleveland was dominated in Miami (-2.5 ypp) but wintry forecast could help them here as they like to run.

**2★ Indy (plus the points) Philadelphia 24 INDIANAPOLIS 20.**

We cashed on these pages fading Philadelphia as their unbeaten season has come to an end on MNF. While still ranking No. 2 in ypp margin, the Eagles have played the weakest schedule. Meanwhile, Indy stunned Las Vegas with a 7.0-4.8 ypp edge out-rushing the Raiders 207-77. Obviously, the big story was Jeff Saturday's widely-criticized hire but the Colts looked "buttoned up" and should be playing in front of a big-time atmosphere here with interim Saturday's first home game. They've also taken serious professional money in this game so far with the look-ahead line being Philly -10. That was a bad line regardless of last week's results.

**Washington 21 HOUSTON 19.** After notching the big upset win on MNF, Washington travels to Houston. It was a legit win as they had a 330-264 yard edge and ran 81 plays to Philadelphia's 47. Not the best spot for them here but they are on a 4-1 SU/4-0-1 ATS run. Houston won the stats vs the Giants last week (6.4-5.5 ypp) but were playing catch-up most of the day. Both teams rank No. 28 in ypp margin. We lean with the home dog but prefer getting a "+3.5".

**NEW ENGLAND 20 N.Y. Jets 17.** Both teams come in off byes. New England is on a 5-1 ATS run including a 22-17 (-3) win at the Jets on October 30th. The Jets are on a 6-2 SU/ATS run since the opener. The Jets are better in ypp margin than the Patriots (+0.5 vs +0.1) and have played the tougher schedule (No. 3 vs No. 25). However, we don't see the value as they're catching the same number as they were at home just a few weeks ago. Another game where we need "+3.5" on the dog.

**N.Y. GIANTS 24 Detroit 21.** The Giants are 7-2 SU and 7-2 ATS. However, they are -0.7 in ypp margin despite facing the 2nd weakest schedule. If you don't think they're overrated, the market is telling you they are with this line only being "3". Meanwhile, Detroit made the shocking comeback win last week as they benefited from a "Pick 6" and a missed Chicago PAT (much to our dismay on these pages). The Lions are No. 25 in ypp margin and have played the 11th toughest schedule. We'd like to play against both teams.

### HOME TEAM IN CAPS

**NEW ORLEANS 21 L.A. Rams 17.** As of press-time, we're not sure who will be QB for the Rams (Wolford or Stafford). The Rams Super Bowl defense has been feeble as they are now 3-6 SU and 2-6-1 ATS with 3 straight losses. The Rams offense ranks No. 32 in ypp. While the Saints rank No. 6 in ypp margin, they've been just as disappointing at 3-7 SU/ATS on the season. Last week, they cleanly lost at Pittsburgh getting outgained 379-186. The money seems to indicate Stafford will be out and obviously WR Cooper Kupp looks like he is done for the season. Feels like a preseason game. We're passing.

**ATLANTA 26 Chicago 25.** Despite the big blown lead on these pages last week, we continue to be impressed with the Bears offense which has averaged 31 ppg the last 4 games. The same can't be said for Atlanta. After the Falcons started red-hot at 6-0 ATS, they've failed to cover 4 straight. Chicago has the better ypp margin and has played the slightly tougher schedule. If a "+3.5" shows in the market we like Chicago as best bet material.

**DENVER 21 Las Vegas 19.** This is a tough card this week as this is another game where we'd like to fade both teams. Las Vegas did win the earlier meeting 32-23. Denver is better in ypp margin (No. 7 vs No. 21). However, that Denver offense makes it extremely tough to lay points with. Las Vegas has been favored in 7 of their 9 games yet comes in a 2-7 SU. Josh McDaniels just got dominated by Jeff Saturday off the streets. We're not sure if McDaniels makes it to year 2 at this point. The same could be said for Denver head coach Nathaniel Hackett. Lean on Las Vegas if you can find a "+3". Totals players note the UNDER is 8-1 in Broncos games this year.

**1★ L.A. (plus the points). Kansas City 27 L.A. CHARGERS 23.**

**This game was flexed to SNF.** The Chiefs have an opportunity to take a strangle-hold of the division with a win here as they'd essentially be 4 games up. The Chiefs are No. 4 in ypp margin despite playing the 5th toughest schedule. They covered last week's game vs Jacksonville despite being -3 in TO's. They're facing a Chargers team that probably should have lost by more than 6 to San Francisco as they were outgained 387-238. In Week 2, KC won 27-24 at home as 4-point favorites. We think you're paying a premium with this line even with the Chargers injuries.

**Dallas 24 MINNESOTA 23.** Minnesota is 8-1 SU. The Vikings just went on the road to the arguably the best team in the NFL (as far as a power rating) and won outright vs Buffalo. However, they find themselves 1.5-point home underdogs to a 6-3 Dallas team who blew a double-digit lead last week. Why? Well, Dallas is No. 10 in ypp margin while Minnesota is No. 22. While this line is screaming to say Dallas is the right side, we'd take Minnesota in a teaser up to +7.5.

**Cincinnati 23 PITTSBURGH 17.** With the Steelers 3-6 record, this game got flexed out of SNF. Pittsburgh did come off the bye with a win over New Orleans. The Steelers still rank dead last in ypp margin but have played the toughest schedule. Pittsburgh did upset Cincinnati 23-20 in OT back in Week 1 as 7-point underdogs. That game was misleading as Cincy had a 432-267 yard edge but were -5 in TO's. Cincy comes in off a bye and is on a 6-1 ATS run. The early week money is on Pittsburgh, but we lean Cincy.

Monday, November 21st

**† San Francisco 25 Arizona 17.** @Estadio Azteca in Mexico City. The NFL world tour continues here. As of press-time we're not sure who will start at QB for Arizona. What we do know is San Francisco even at 5-4 SU, is one of the top 3-4 teams in the NFL as they rank No. 2 in ypp margin. Meanwhile Arizona ranks No. 31 in ypp margin. We like the 49ers in a teaser down through 3 and 7.

**Teaser options (ranked strongest to weakest): 3-0 last week, 11-2 last 3 weeks**

1. Buffalo -2.5 (total: 42)
2. San Francisco -2 (total 43.5)
3. Las Vegas +8.5 (total 41.5)
4. Minnesota +7.5 (total 47.5)

**Bye week:**

Jacksonville, Miami, Seattle and Tampa Bay

# 2022 NFL Schedules with Logs

## Arizona (SU: 4-6, ATS: 5-5, O/U: 5-4-1)

Date	Opponent	Line	Score	ATS	O/U
9/11	Kansas City	+6	21-44 L	u54	
9/18	at Las Vegas	+5	29-23 W	p52	
9/25	L.A. Rams	+3	12-20 L	u48	
10/2	at Carolina	+1	26-16 W	u44	
10/9	Philadelphia	+5	17-20 W	u48	
10/16	at Seattle	-2	9-19 L	u50	
10/20	New Orleans	-2	42-34 W	u44	
10/30	at Minnesota	+4	26-34 L	u48	
11/6	Seattle	-2	21-31 L	u49	
11/13	at L.A. Rams	+3	27-17 W	u38	
11/21	San Francisco				
11/27	L.A. Chargers				
12/4					
12/12	New England				
12/18	at Denver				
12/25	Tampa Bay				
1/1	at Atlanta				
1/8	at San Francisco				

## Atlanta (SU: 4-6, ATS: 6-4, O/U: 5-5)

Date	Opponent	Line	Score	ATS	O/U
9/11	New Orleans	+5	26-27 W	u43	
9/18	at L.A. Rams	+10	27-31 W	u46	
9/25	at Seattle	+1	27-23 W	u43	
10/2	Cleveland	+1	23-20 W	u48	
10/9	at Tampa Bay	+10	15-21 W	u46	
10/16	San Francisco	+3	28-14 W	u45	
10/23	at Cincinnati	+6	17-35 L	u47	
10/30	Carolina	-4	37-34 L	u41	
11/6	L.A. Chargers	+2	17-20 L	u49	
11/12	at Carolina	-2	15-25 L	u41	
11/20	Chicago				
11/27	at Washington				
12/4	Pittsburgh				
12/11	at New Orleans				
12/18	at Baltimore				
1/1	Arizona				
1/8	Tampa Bay				

## Baltimore (SU: 6-3, ATS: 4-4-1, O/U: 3-6)

Date	Opponent	Line	Score	ATS	O/U
9/11	at N.Y. Jets	-6	24-9 W	u44	
9/18	Miami	-3	38-42 L	u43	
9/25	at New England	-2	37-26 W	u45	
10/2	Buffalo	+3	20-23 P	u50	
10/9	Cincinnati	-3	19-17 L	u48	
10/16	at N.Y. Giants	-5	20-24 L	u45	
10/23	Cleveland	-6	23-20 L	u46	
11/7	at Tampa Bay	+2	27-22 W	u46	
11/13	at New Orleans	-1	27-13 W	u46	
11/20	Carolina				
11/27	at Jacksonville				
12/4	Denver				
12/11	at Pittsburgh				
12/17	at Cleveland				
12/24	Atlanta				
1/1	Pittsburgh				
1/8	at Cincinnati				

## Buffalo (SU: 6-3, ATS: 4-4-1, O/U: 2-7)

Date	Opponent	Line	Score	ATS	O/U
9/8	at L.A. Rams	-2	31-10 W	u52	
9/19	Tennessee	-10	41-7 W	u47	
9/25	at Miami	-4	19-21 L	u54	
10/2	at Baltimore	-3	23-20 P	u50	
10/9	Pittsburgh	-14	38-3 W	u47	
10/16	at Kansas City	-2	24-20 W	u54	
10/23					
10/30	Green Bay	-10	27-17 L	u47	
11/6	at N.Y. Jets	-10	17-20 L	u46	
11/13	Minnesota	-6	30-33 L	u46	
11/20	Cleveland				
11/24	at Detroit				
12/1	at New England				
12/11	N.Y. Jets				
12/17	Miami				
12/24	at Chicago				
1/2	at Cincinnati				
1/8	New England				

## Carolina (SU: 3-7, ATS: 4-6, O/U: 4-6)

Date	Opponent	Line	Score	ATS	O/U
9/11	Cleveland	-1	24-26 L	u42	
9/18	at N.Y. Giants	-1	16-19 L	u43	
9/25	New Orleans	+2	22-14 W	u41	
10/2	Arizona	-1	16-26 L	u44	
10/9	San Francisco	+6	15-37 L	u39	
10/16	at L.A. Rams	+9	10-24 L	u41	
10/23	Tampa Bay	+13	21-3 W	u38	
10/30	at Atlanta	+4	34-37 W	u41	
11/6	at Cincinnati	+7	21-42 L	u42	
11/10	Atlanta	+2	25-15 W	u41	
11/20	at Baltimore				
11/27	Denver				
12/4					
12/11	at Seattle				
12/18	Pittsburgh				
12/24	Detroit				
1/1	at Tampa Bay				
1/8	at New Orleans				

## Chicago (SU: 3-7, ATS: 4-5-1, O/U: 6-4)

Date	Opponent	Line	Score	ATS	O/U
9/11	San Francisco	+6	19-10 W	u38	
9/18	at Green Bay	+10	10-27 L	u42	
9/25	Houston	-3	23-20 P	u39	
10/2	at N.Y. Giants	+3	12-20 L	u39	
10/9	at Minnesota	+8	22-29 W	u44	
10/13	Washington	+1	7-12 L	u38	
10/24	at New England	+8	33-14 W	u40	
10/30	at Dallas	+9	29-49 L	u43	
11/6	Miami	+4	32-35 W	u48	
11/13	Detroit	-3	30-31 L	u48	
11/20	at Atlanta				
11/27	at N.Y. Jets				
12/4	Green Bay				
12/11					
12/18	Philadelphia				
12/24	Buffalo				
1/1	at Detroit				
1/8	Minnesota				

## Cincinnati (SU: 5-4, ATS: 6-3, O/U: 3-5-1)

Date	Opponent	Line	Score	ATS	O/U
9/11	Pittsburgh	-7	20-23 L	u44	
9/18	at Dallas	-7	17-20 L	u42	
9/25	at N.Y. Jets	-6	27-12 W	u46	
10/2	Miami	-4	27-15 W	u49	
10/9	at Baltimore	+3	17-19 W	u48	
10/16	at New Orleans	-3	30-26 W	u43	
10/23	Atlanta	-6	35-17 W	u47	
10/31	at Cleveland	-3	13-32 L	p45	
11/6	Carolina	-7	42-21 W	u42	
11/13					
11/20	at Pittsburgh				
11/27	at Tennessee				
12/4	Kansas City				
12/11	Cleveland				
12/18	at Tampa Bay				
12/24	at New England				
1/2	Buffalo				
1/8	Baltimore				

## Cleveland (SU: 3-6, ATS: 4-5, O/U: 6-2-1)

Date	Opponent	Line	Score	ATS	O/U
9/11	at Carolina	+1	26-24 W	u42	
9/18	N.Y. Jets	-6	30-31 L	u38	
9/25	Pittsburgh	-4	29-17 W	u38	
10/2	at Atlanta	-1	20-23 L	u48	
10/9	L.A. Chargers	+1	28-30 L	u47	
10/16	New England	-2	15-38 L	u43	
10/23	at Baltimore	+6	20-23 W	u45	
10/31	Cincinnati	+3	32-13 W	p46	
11/6					
11/13	at Miami	+3	17-39 L	u49	
11/20	at Tampa Bay				
11/27	at Houston				
12/4	at Cincinnati				
12/11	at Baltimore				
12/18	at New Orleans				
12/24	at Washington				
1/1	at Pittsburgh				

## Dallas (SU: 6-3, ATS: 6-3, O/U: 4-5)

Date	Opponent	Line	Score	ATS	O/U
9/11	Tampa Bay	+2	3-19 L	u49	
9/18	Cincinnati	+7	20-17 W	u42	
9/25	at L.A. Chargers	+1	23-16 W	u38	
10/2	Washington	-3	25-10 W	u41	
10/9	at L.A. Rams	+5	22-10 W	u41	
10/16	at Philadelphia	+7	17-26 L	u42	
10/23	Detroit	-7	24-6 W	u49	
10/30	Chicago	-9	49-29 W	u43	
11/6					
11/13	at Green Bay	-3	28-31 L	u44	
11/20	at Minnesota				
11/24	N.Y. Giants				
12/4	Indianapolis				
12/11	Houston				
12/18	at Jacksonville				
12/24	at Seattle				
1/1	at Tennessee				

## Denver (SU: 3-6, ATS: 3-6, O/U: 1-8)

Date	Opponent	Line	Score	ATS	O/U
9/12	at Seattle	-6	16-17 L	u43	
9/18	Houston	-10	16-9 L	u45	
9/25	San Francisco	+1	23-16 W	u38	
10/2	at Las Vegas	+2	23-32 L	u45	
10/6	Indianapolis	-3	9-12 L	u42	
10/17	at Chargers	+3	16-19 W	u45	
10/23	N.Y. Jets	+2	9-16 L	u36	
10/30	at Jacksonville	+1	21-17 W	u41	
11/6					
11/13	at Tennessee	+2	10-17 L	u39	
11/20	at Carolina				
11/24	at Baltimore				
12/11	Kansas City				
12/18	Arizona				
12/25	at L.A. Rams				
1/1	at Kansas City				
1/8	L.A. Chargers				

## Detroit (SU: 3-6, ATS: 5-3-1, O/U: 6-3)

Date	Opponent	Line	Score	ATS	O/U
9/11	Philadelphia	+6	35-37 W	u48	
9/18	Washington	PK	36-28 W	u48	
9/25	San Francisco	+6	24-28 W	u51	
10/2	Seattle	-3	45-48 L	u47	
10/9	at New England	-3	0-29 L	u48	
10/16					
10/23	at Dallas	+7	6-24 L	u49	
10/30	Miami	+4	27-31 P	u52	
11/6	Green Bay	+4	15-9 W	u49	
11/13	at Chicago	+3	31-30 W	u48	
11/20	at N.Y. Giants				
11/24	Buffalo				
12/4	Jacksonville				
12/11	Minnesota				
12/18	at N.Y. Jets				
12/25	at Carolina				
1/1	Chicago				
1/8	at Green Bay				

## Green Bay (SU: 4-6, ATS: 4-6, O/U: 4-6)

Date	Opponent	Line	Score	ATS	O/U
9/11	at Minnesota	+2	7-23 L	u46	
9/18	Chicago	-10	27-10 W	u42	
9/25	at Tampa Bay	+1	14-12 W	u42	
10/2	New England	-9	27-24 L	u40	
10/9	at N.Y. Giants	-9	22-27 L	u42	
10/16	N.Y. Jets	-7	10-27 L	u44	
10/23	at Washington	-4	21-23 L	u41	
10/30	at Buffalo	+10	17-27 W	u47	
11/6	at Detroit	-4	9-15 L	u49	
11/13	Dallas	+3	31-28 W	u44	
11/20	at Philadelphia				
11/27	at Chicago				
12/4	at L.A. Rams				
12/11	at Minnesota				
12/18	at N.Y. Jets				
12/25	at Dallas				
1/1	Minnesota				
1/8	Detroit				

## Houston (SU: 1-7-1, ATS: 4-4-1, O/U: 4-5)

Date	Opponent	Line	Score	ATS	O/U
9/11	Indianapolis	-7	20-20 W	u45	
9/18	at Denver	+10	9-16 W	u46	
9/25	Buffalo	+3	20-23 P	u45	
10/2	L.A. Chargers	+5	24-34 L	u45	
10/9	at Jacksonville	+7	13-6 W	u43	
10/16					
10/23	at Las Vegas	+7	20-38 L	u46	
10/30	Tennessee	+1	10-17 L	u39	
11/6	Philadelphia	+14	17-29 W	u45	
11/13	at N.Y. Giants	+5	16-24 L	u41	
11/20	Washington				
11/27	at Miami				
12/4	Cleveland				
12/11	at Dallas				
12/18	Kansas City				
12/24	at Tennessee				
1/1	Jacksonville				
1/8	at Indianapolis				

## Indianapolis (SU: 4-5-1, ATS: 4-6, O/U: 2-8)



# 2022 CFB Schedules with Logs

## Air Force (SU: 7-3, ATS: 5-5, O/U: 5-5)

Date	Opponent	Line	Score	ATS	O/U
9/3	Northern Iowa	-15	48-17 W	o46	
9/10	Colorado	-17	41-10 W	o50	
9/16	at Wyoming	-16	14-17 L	u47	
9/23	Nevada	-24	48-20 W	o46	
10/1	Navy	-14	13-10 L	u38	
10/8	at Utah State	-11	27-34 L	o53	
10/15	at UNLV	-10	42-7 W	u50	
10/22	Boise State	-2	14-19 L	u46	

10/29					
11/5	† Army	-7	13-7 L	u40	
11/12	New Mexico	-21	35-3 W	o37	
11/19	Colorado State				
11/26	at San Diego St				

## Akron (SU: 1-9, ATS: 4-5-1, O/U: 4-5-1)

Date	Opponent	Line	Score	ATS	O/U
9/4	at Saint Francis-ot	-18	30-23 L	u53	
9/10	at Michigan St	+34	0-52 L	p56	
9/17	at Tennessee	+47	6-63 L	o67	
9/24	at Liberty	+26	12-1 W	u52	
10/1	Bowling Green	+8	28-31 W	o49	
10/8	at Ohio	+10	34-55 L	o59	
10/15	Central Michigan	+12	21-28 W	u60	
10/22	at Kent State	+16	27-33 W	u65	
10/29	Miami (OH)	+9	9-27 L	u51	

11/5					
11/8	Eastern Michigan	+6	28-34 P	o57	
11/19	at Buffalo				
11/26	at Northern Illinois				

## Alabama (SU: 8-2, ATS: 5-5, O/U: 4-6)

Date	Opponent	Line	Score	ATS	O/U
9/3	Utah State	-42	55-0 W	u63	
9/10	at Texas	-21	20-19 L	u64	
9/17	UL-Monroe	-49	63-7 W	o61	
9/24	Vanderbilt	-40	55-3 W	u61	
10/1	at Arkansas	-17	49-26 W	o61	
10/8	Texas A&M	-24	24-20 L	u48	
10/15	at Tennessee	-9	49-52 L	o68	
10/22	Mississippi State	-21	30-6 W	u61	

10/29					
11/5	at LSU-ot	-13	31-32 L	o56	
11/12	at Ole Miss	-11	30-24 L	u65	
11/19	Austin Peay				

## Appalachian St (SU: 5-5, ATS: 3-7, O/U: 5-5)

Date	Opponent	Line	Score	ATS	O/U
9/3	North Carolina	-3	61-63 L	o56	
9/10	at Texas A&M	+18	17-14 W	u54	
9/17	Troy	+14	32-28 L	o52	
9/24	James Madison	-6	28-32 L	o56	
10/1	The Citadel	-40	49-0 W	u54	
10/8	at Texas State	-19	24-36 L	o54	

10/15					
10/19	Georgia State	-9	42-17 W	u60	
10/29	Robert Morris	-50	42-3 L	u59	
11/3	at Coa. Carolina	-3	28-35 L	u65	
11/12	at Marshall	-2	21-28 L	o47	
11/19	Old Dominion				
11/26	at Georgia Southern				

## Arizona (SU: 4-6, ATS: 6-4, O/U: 6-4)

Date	Opponent	Line	Score	ATS	O/U
9/3	at San Diego St	+6	38-20 W	o46	
9/10	Mississippi State	+12	17-39 L	u58	
9/17	North Dakota St	+3	31-28 W	o49	
9/24	at California	+3	31-49 L	o50	
10/1	Colorado	-18	43-20 W	o58	
10/8	Oregon	+13	22-49 W	u72	
10/15	at Washington	+14	39-49 W	o71	

10/22					
10/29	USC	+13	37-45 W	o74	
11/5	at Utah	+18	20-45 L	u68	
11/12	at UCLA	+20	34-28 W	u77	
11/19	Washington State				

## Arizona St (SU: 3-7, ATS: 4-6, O/U: 4-6)

Date	Opponent	Line	Score	ATS	O/U
9/1	Northern Arizona	-25	40-3 W	u52	
9/10	at Oklahoma St	+11	17-34 L	u58	
9/17	Eastern Michigan	-20	21-30 L	u56	
9/24	Utah	+17	13-34 L	u53	
10/1	at USC	+24	25-42 W	o61	
10/8	Washington	+13	45-38 W	o56	

10/15					
10/22	at Stanford	+3	14-15 W	u52	
10/29	at Colorado	-13	42-34 L	o48	
11/5	UCLA	+11	36-50 L	o67	
11/12	at Washington St	+9	18-28 L	u59	
11/19	Oregon State				

## Arkansas (SU: 5-5, ATS: 5-5, O/U: 7-3)

Date	Opponent	Line	Score	ATS	O/U
9/3	Cincinnati	-6	31-24 W	o54	
9/10	South Carolina	-9	44-30 W	o56	
9/17	Missouri State	-26	38-27 L	o60	
9/24	† Texas A&M	+1	21-23 L	u51	
10/1	Alabama	+17	26-49 L	o61	
10/8	at Mississippi St	+9	17-40 L	o55	
10/15	at BYU	+1	52-35 W	o66	

10/22					
10/29	at Auburn	-4	41-27 W	o60	
11/5	Liberty	+14	19-21 L	u61	
11/12	LSU	-5	10-13 W	u59	
11/19	Ole Miss				
11/26	at Missouri				

## Arkansas St (SU: 3-7, ATS: 6-4, O/U: 6-4)

Date	Opponent	Line	Score	ATS	O/U
9/3	Grambling State	-25	58-3 W	o57	
9/10	at Ohio State	+44	12-45 W	u68	
9/17	at Memphis	+14	32-44 W	o64	
9/24	at Old Dominion	+6	26-29 W	u55	
10/1	UL-Monroe	-7	45-28 W	o59	
10/8	James Madison	+11	20-42 L	o55	
10/15	at Southern Miss	+4	19-20 W	u53	
10/22	at UL-Lafayette	+6	18-38 L	o51	
10/29	South Alabama	+9	3-13 L	u52	

11/5					
11/12	Massachusetts	-17	35-33 L	o49	
11/19	at Texas State				
11/26	Troy				

## Army (SU: 3-6, ATS: 4-5, O/U: 5-4)

Date	Opponent	Line	Score	ATS	O/U
9/3	at Coa. Carolina	+1	28-38 L	o53	
9/10	UTSA-ot	+2	38-41 L	o54	
9/17	Villanova	-14	49-10 W	o56	
9/24					
10/1	Georgia State	-8	14-31 L	u54	
10/8	at Wake Forest	+16	10-45 L	u65	
10/15	Colgate	-31	42-17 L	o51	
10/22	UL-Monroe	-6	48-24 W	o55	

10/29					
11/5	† Air Force	+7	7-13 W	u40	
11/12	Connecticut	+8	9-10 W	u45	
11/19	at Massachusetts				
11/26	at San Diego St				

## Auburn (SU: 4-6, ATS: 4-6, O/U: 6-4)

Date	Opponent	Line	Score	ATS	O/U
9/3	Mercer	-30	42-16 L	o51	
9/10	San Jose State	-24	24-16 L	u48	
9/17	Penn State	+2	12-41 L	u47	
9/24	Missouri-ot	-7	17-14 L	o51	
10/1	LSU	+8	17-21 W	u44	
10/8	at Georgia	+27	10-42 L	u49	
10/15	at Ole Miss	+15	34-48 W	o55	

10/22					
10/29	Arkansas	+4	27-41 L	o60	
11/5	at San Jose St	+12	33-39 W	o50	
11/12	Texas A&M	-1	13-10 W	u48	
11/19	Western Kentucky				
11/26	at Alabama				

## Ball St (SU: 5-6, ATS: 5-6, O/U: 3-8)

Date	Opponent	Line	Score	ATS	O/U
9/1	at Tennessee	+37	10-59 L	o66	
9/10	Western Michigan	+6	30-37 L	o61	
9/17	Murray State	-21	31-40 W	u53	
9/24	at Ga Southern	+9	23-34 L	u57	
10/1	No. Illinois-Zot	+3	44-38 W	o58	
10/8	at Central Mich	+7	17-16 W	u43	
10/15	Connecticut	-9	25-21 L	u47	
10/22	Eastern Michigan	-2	16-20 L	u57	

10/29					
11/1	at Kent State	+7	27-20 W	u63	
11/8	at Toledo	+3	27-28 W	u51	
11/15	Ohio	+3	18-32 L	u57	
11/22	at Miami (OH)				

## Baylor (SU: 6-4, ATS: 6-4, O/U: 7-3)

Date	Opponent	Line	Score	ATS	O/U
9/3	Albany	-42	69-10 W	o46	
9/10	at BYU-Zot	+2	20-26 L	u55	
9/17	Texas State	-30	42-7 W	u53	
9/24	at Iowa State	-2	31-24 W	o45	
10/1	Oklahoma State	-2	25-36 L	o56	
10/8					
10/13	at West Virginia	-3	40-43 L	o55	
10/22	Kansas	-10	35-23 W	o56	
10/29	at Texas Tech	+1	45-17 W	o61	
11/5	at Oklahoma	+3	38-35 W	o61	
11/12	Kansas State	-2	3-31 L	u52	

## Boise St (SU: 7-3, ATS: 5-4-1, O/U: 5-5)

Date	Opponent	Line	Score	ATS	O/U
9/3	at Oregon State	+1	17-34 L	u55	
9/10	at New Mexico	-17	31-14 P	o43	
9/17	UT-Martin	-24	30-7 L	u53	
9/23	at UTEP	-16	10-27 L	u44	
9/24	San Diego State	-6	35-13 W	o45	
10/1	Fresno State	-10	40-20 W	o48	

10/8					
10/15	at Air Force	+2	19-14 W	u46	
10/22	Colorado State	-25	49-10 W	o42	
10/29	BYU	-9	28-31 L	u54	
11/12	at Nevada	-21	41-3 W	u47	
11/19	at Wyoming				

## Boston College (SU: 3-7, ATS: 3-7, O/U: 4-5-1)

Date	Opponent	Line	Score	ATS	O/U
9/3	Rutgers	-9	21-22 L	u47	
9/10	at Virginia Tech	-2	10-27 L	u45	
9/17	Maine	-31	38-17 L	o48	
9/24	at Florida State	+18	14-44 L	o50	
10/1	Louisville	+13	34-33 W	o48	
10/8	Clemson	+21	3-31 L	u49	

10/15					
10/22	at Wake Forest	+20	15-43 L	u60	
10/29	at Connecticut	-7	3-13 L	u44	
11/4	Duke	+11	31-38 W	u47	
11/12	at NC State	+18	21-20 W	p41	
11/19	at Notre Dame				

## Bowling Green (SU: 6-5, ATS: 4-6-1, O/U: 7-4)

Date	Opponent	Line	Score	ATS	O/U
9/3	at UCLA	+24	17-45 L	o56	
9/10	E. Kentucky-7ot	-7	57-59 L	o57	
9/17	Marshall-ot	+17	34-31 P	o50	
9/24	at Mississippi St	+13	44-5 P	o53	
10/1	at Akron	-8	31-28 L	u49	
10/8	Buffalo	+2	7-38 L	o56	
10/15	at Ohio (OH)	+7	17-13 W	u45	
10/22	at Central Mich	+6	34-18 W	o50	

10/29					
11/2	Western Michigan	-5	13-9 L	u48	
11/9	Kent State	+2	6-40 L	u56	
11/15	at Toledo	+15	42-35 W	o46	
11/22	at Ohio				

## Buffalo (SU: 5-5, ATS: 6-3-1, O/U: 6-4)

12	at NC State	+18	21-20 W	p41	11
19	at Notre Dame				11
26	Syracuse				
Bowling Green (SU: 6-5, ATS: 4-6-1, O/U: 7-4)					
	Opponent	Line	Score	ATS	O/U
	at UCLA	+24	17-45 L	o56	9/2
0	E. Kentucky-Tot	-7	57-59 L	o57	9/1
7	Marshall-of	+17	34-31 W	o50	10/2
4	at Mississippi St	+31	14-45 P	o53	10/2
1	at Akron	-8	31-28 L	o49	10/2

James Madison (SU: 6-3, ATS: 6-3, O/U: 5-4)					
Date	Opponent	Line	Score	ATS	O/U
9/3	Middle Tenn	-4	44-7 W	u60	
9/10	Norfolk State	-41	63-7 W	o54	
9/17					
9/24	at Appalachian St	+6	32-28 W	o56	
10/1	Texas State	-22	40-13 W	o51	
10/8	at Arkansas State	-11	42-20 W	o55	
10/15	at Ga Southern	-13	38-45 L	o68	
10/22	Marshall	-9	12-26 L	u48	
10/29					
11/5	at Louisville	+6	10-34 L	u53	
11/12	at Old Dominion	-7	37-37 W	u48	
11/19	Georgia State				
11/26	Coastal Carolina				

Kansas (SU: 6-4, ATS: 7-2, O/U: 6-4)					
Date	Opponent	Line	Score	ATS	O/U
9/2	Tennessee Tech	-30	56-10 W	o62	
9/10	at W. Virginia	+14	55-42 W	o59	
9/17	at Houston	+8	48-30 W	o58	
9/24	Duke	+7	35-27 W	u65	
10/1	Iowa State	+3	14-11 W	u55	
10/8	TCU	-3	31-38 P	u50	
10/15	at Oklahoma	+10	42-32 W	o66	
10/22	at Baylor	+10	23-58 L	o56	
10/29					
11/5	Oklahoma State	-3	37-16 W	u59	
11/12	at Texas Tech	+3	28-43 L	o62	
11/19	Texas				
11/26	at Kansas State				

Kansas St (SU: 7-3, ATS: 6-3, O/U: 4-6)					
Date	Opponent	Line	Score	ATS	O/U
9/3	South Dakota	-27	34-0 W	u50	
9/10	Missouri	-7	40-12 W	u52	
9/17	Tulane	-13	10-17 L	u49	
9/24	at Oklahoma	+13	41-34 W	o53	
10/1	Texas Tech	-7	37-28 W	o56	
10/8	at Iowa State	-1	10-9 P	u45	
10/15					
10/22	at TCU	+3	28-38 L	u54	
10/29	Oklahoma State	-2	48-0 W	o57	
11/5	Texas	+3	27-34 L	o54	
11/12	at Baylor	+2	31-3 W	u52	
11/19	at West Virginia				
11/26	Kansas				

Kent St (SU: 4-6, ATS: 4-6, O/U: 3-7)					
Date	Opponent	Line	Score	ATS	O/U
9/3	at Washington	+23	20-45 L	o61	
9/10	at Oklahoma	+3	31-3 W	u49	
9/17	LIU	-40	63-10 W	o64	
9/24	at Georgia	+45	22-39 W	u61	
10/1	Ohio	-10	24-14 L	u65	
10/8	at Miami (OH)	-5	24-27 L	u56	
10/15	at Toledo	+7	31-52 L	o62	
10/22	Akron	-16	33-27 L	u65	
10/29					
11/1	Ball State	-7	20-27 L	u61	
11/9	at Bowling Green	-2	40-6 W	u56	
11/16	Eastern Michigan				
11/26	at Buffalo				

Kentucky (SU: 6-4, ATS: 6-4, O/U: 1-9)					
Date	Opponent	Line	Score	ATS	O/U
9/3	Miami (OH)	-15	37-13 W	u55	
9/10	at Florida	+6	26-16 W	u53	
9/17	Youngstown St	-30	31-0 W	u49	
9/24	Northern Illinois	-27	31-23 L	o59	
10/1	at Ole Miss	-6	19-22 W	u55	
10/8	South Carolina	-4	14-24 L	u44	
10/15	Mississippi State	+3	27-17 W	u50	
10/22					
10/29	at Tennessee	+10	6-44 L	u63	
11/5	at Missouri	+1	21-17 W	u40	
11/12	Vanderbilt	-17	21-24 L	u45	
11/19	Georgia				
11/26	Louisville				

Liberty (SU: 8-2, ATS: 5-5, O/U: 5-5)					
Date	Opponent	Line	Score	ATS	O/U
9/3	at So. Miss	-3	29-27 L	u50	
9/10	UAB	+6	21-14 W	u50	
9/17	at Wake Forest	+17	36-37 W	o64	
9/24	Akron	-26	21-12 L	u52	
10/1	at Old Dominion	-3	38-24 W	u57	
10/8	at Massachusetts	-22	42-40 L	o59	
10/15	Gardner-Webb	-24	21-20 L	u45	
10/22	BYU	+7	41-14 W	u58	
10/29					
11/5	at Arkansas	+14	21-19 W	u61	
11/12	at Connecticut	-13	33-36 L	o45	
11/19	Virginia Tech				
11/26	New Mexico State				

Louisiana Tech (SU: 3-7, ATS: 5-5, O/U: 8-2)					
Date	Opponent	Line	Score	ATS	O/U
9/1	at Missouri	+20	24-52 L	o62	
9/10	Stephen F. Austin	-6	52-17 W	o64	
9/17	at Clemson	+33	20-48 W	o53	
9/24	at South Alabama	+13	14-38 L	u59	
10/1					
10/8	UTEP	-1	41-31 W	o52	
10/15	at North Texas	+6	27-47 L	o68	
10/22	Rice	+2	41-42 W	o56	
10/28	at FIU-Zot	-6	34-42 L	o57	
11/5	Middle Tennessee	+2	40-24 W	o63	
11/12	at UTSA	+17	7-51 L	u69	
11/19	at Charlotte				
11/26	UAB				

Louisville (SU: 6-4, ATS: 6-4, O/U: 4-6)					
Date	Opponent	Line	Score	ATS	O/U
9/3	at Syracuse	-5	7-31 L	u55	
9/10	at UCF	+2	31-35 L	u57	
9/16	Florida State	+2	31-35 L	u57	
9/24	USF	-15	41-3 W	o63	
10/1	at Boston College	-13	33-34 L	o48	
10/8	at Virginia	+1	34-17 W	o47	
10/15					
10/22	Pittsburgh	-1	24-10 W	u55	
10/29	Wake Forest	+3	48-21 W	o66	
11/5	James Madison	-6	34-10 W	o53	
11/12	at Clemson	+7	16-31 L	u52	
11/19	NC State				
11/26	at Kentucky				

LSU (SU: 8-2, ATS: 6-4, O/U: 4-6)					
Date	Opponent	Line	Score	ATS	O/U
9/4	at Florida State	-4	23-24 L	u51	
9/10	Southern	-44	65-17 W	o56	
9/17	Mississippi State	+3	31-16 W	u53	
9/24	New Mexico	-22	38-40 W	o52	
10/1	at Auburn	-8	21-17 L	u44	
10/8	Tennessee	+2	13-40 L	u63	
10/15	at Florida	+2	45-35 W	o51	
10/22	Ole Miss	PK	45-20 W	o64	
10/29					
11/5	Alabama	+13	32-31 W	o56	
11/12	at Arkansas	-5	13-10 L	u59	
11/19	UAB				
11/26	at Texas A&M				

Marshall (SU: 6-4, ATS: 5-5, O/U: 2-8)					
Date	Opponent	Line	Score	ATS	O/U
9/3	Norfolk St	-40	55-3 W	u49	
9/10	at Notre Dame	+20	26-21 W	u48	
9/17	at Bowl Green	-17	31-34 L	o50	
9/24	Troy	-4	28-17 W	u51	
10/1	Gardner-Webb	-31	28-7 L	u55	
10/8					
10/15	UL-Lafayette	-10	13-23 L	u45	
10/22	at James Madison	+9	26-12 W	u48	
10/29	Coastal Carolina	-2	13-24 L	u54	
11/5	at Old Dominion	-3	12-0 W	u46	
11/12	at Appalachian St	+2	28-21 W	u47	
11/19	at Georgia Southern				
11/26	Georgia State				

Maryland (SU: 6-4, ATS: 4-6, O/U: 4-6)					
Date	Opponent	Line	Score	ATS	O/U
9/3	Buffalo	-24	31-10 L	u66	
9/10	at Charlotte	-28	56-21 W	o65	
9/17	SMU	-3	34-27 W	u73	
9/24	at Michigan	+17	27-34 W	u68	
10/1	Michigan State	-7	27-13 W	u56	
10/8	Purdue	-3	29-31 L	o59	
10/15	at Indiana	-11	38-33 L	o63	
10/22	Northwestern	-14	31-24 L	o51	
10/29					
11/5	at Wisconsin	+5	10-23 L	u47	
11/12	at Penn State	+10	0-30 L	u56	
11/19	Ohio State				
11/26	Rutgers				

Massachusetts (SU: 1-9, ATS: 4-6, O/U: 3-7)					
Date	Opponent	Line	Score	ATS	O/U
9/3	at Tulane	+28	10-42 L	u59	
9/10	at Toledo	+28	10-55 L	u49	
9/17	Stony Brook	-1	20-3 W	u44	
9/24	at Temple	+10	0-28 L	u44	
10/1	at Eastern Mich	+20	13-20 W	u53	
10/8	Liberty	+22	24-42 W	o45	
10/15	Buffalo	+17	7-34 L	u47	
10/22					
10/29	New Mexico St	+1	13-23 L	u39	
11/4	at Connecticut	+15	10-27 L	u40	
11/12	at Arkansas St	+17	33-35 W	o49	
11/19	at Texas A&M				
11/26	Army				

Memphis (SU: 5-5, ATS: 4-6, O/U: 8-2)					
Date	Opponent	Line	Score	ATS	O/U
9/3	at Mississippi St	+17	23-49 L	o58	
9/10	at Navy	-7	37-13 W	o47	
9/17	Arkansas State	-14	44-32 L	o64	
9/24	North Texas	-13	44-34 L	o58	
10/1	Temple	-18	24-3 W	u50	
10/8	Houston	-1	32-33 L	o57	
10/15	E Carolina	-40	45-47 W	o62	
10/22	at Tulane	+7	28-38 L	o55	
10/29					
11/5	UCF	+3	28-35 L	u60	
10/10	Tulsa	-6	26-10 W	o60	
11/19	North Alabama				
11/26	at SMU				

Miami, FL (SU: 5-5, ATS: 2-8, O/U: 4-6)					
Date	Opponent	Line	Score	ATS	O/U
9/3	Bethune-Cook	-49	70-13 W	o60	
9/10	Southern Miss	-27	30-7 L	u50	
9/17	at Texas A&M	+6	9-17 L	u45	
9/24	Middle Tennessee	-25	31-45 L	o53	
10/1	North Carolina	-4	24-27 L	o57	
10/15	at Virginia Tech	-9	20-14 L	u58	
10/22	Duke	-10	21-45 L	o59	
10/29	at Virginia	-40	3-14 L	u54	
11/5	Florida State	+6	3-45 L	u48	
11/12	at Georgia Tech	+2	35-14 W	o43	
11/19	at Clemson				
11/26	Pittsburgh				

Miami, OH (SU: 4-6, ATS: 4-6, O/U: 2-8)					
Date	Opponent	Line	Score	ATS	O/U
9/3	at Kentucky	+15	13-37 L	u55	
9/10	Robert Morris	-30	31-14 L	u54	
9/17	at Cincinnati	+24	17-38 W	o51	
9/24	at Northwestern	+7	17-14 W	u50	
10/1	at Buffalo	+3	20-24 L	u50	
10/8	Kent State	+5	27-24 W	u56	
10/15	at Bowling Green	-7	13-17 L	u45	
10/22	Western Michigan	-7	10-16 L	u44	
10/29	at Akron	-9	27-9 W	u51	
11/5	Ohio	+2	21-37 L	o52	
11/12	at Northern Illinois				
11/19	Ball State				

9/3	Colorado State	-31	51-7 W	u60	
9/10	Hawaii	-53	56-10 L	u66	
9/17	Connecticut	-47	59-0 W	o59	
9/24	Maryland	-17	34-27 L	u46	
10/1	at Iowa	-10	27-14 W	u42	
10/8	at Indiana	-23	31-10 L	u58	
10/15	Penn State	-7	41-17 W	u49	
10/22					
10/29	Michigan State	-22	29-7 P	u55	
11/5	at Rutgers	-26	52-17 W	u45	
11/12	Nebraska	-30	34-3 W	o40	
11/19	Illinois				
11/26	at Ohio State				
Michigan SU (SU: 5-5, ATS: 4-5-1, O/U: 4-6)					
Date	Opponent	Line	Score	ATS	O/U



San Diego ISU: 6-4, ATS: 4-6, O/U: 4-6				
Date	Opponent	Line	Score	ATS
9/3	Arizona	-6	20-38 L	u46
9/10	Idaho State	-32	38-17 L	u50
9/17	at Utah	-22	37-35 L	u48
9/24	Toledo	+7	17-14 W	u44
9/30	at Boise State	+6	13-35 L	u38
10/8	Hawaii	-24	16-14 L	u49
10/15				
10/22	at Nevada	-7	23-7 W	u36
10/29	at Fresno State	+11	28-32 W	u44
11/5	UNLV	-5	14-10 L	u47
11/12	San Jose State	+2	43-27 W	u41
11/18	at New Mexico			
11/26	Air Force			

San Jose ISU: 6-3, ATS: 4-5, O/U: 3-6				
Date	Opponent	Line	Score	ATS
9/3	Portland State	-22	21-17 L	u51
9/10	at Auburn	+24	16-24 W	u48
9/17				
9/24	Western Mich	-6	34-16 W	u48
10/1	at Wyoming	-2	33-36 W	u42
10/7	UNLV	-6	40-7 W	u47
10/15	at Fresno State	-7	10-17 L	u47
10/22	at New Mexico	Cancelled		
10/29	Nevada	-24	35-28 L	u44
11/5	Colorado State	-23	28-16 L	u44
11/12	at San Diego St	-2	27-43 L	u41
11/19	at Utah State			
11/26	Hawaii			

SMU ISU: 6-4, ATS: 5-5, O/U: 4-6				
Date	Opponent	Line	Score	ATS
9/3	at North Texas	-9	48-10 W	u67
9/10	Lamar	-48	45-16 L	u66
9/17	at Maryland	+3	27-34 L	u73
9/24	TCU	+2	34-42 L	u72
10/1				
10/8	at UCF	+3	19-41 L	u65
10/14	Navy	-12	40-34 L	u59
10/22	Cincinnati	+3	27-29 W	u59
10/29	at Tulsa	-1	45-34 W	u61
11/5	Houston	-3	77-63 W	u66
11/12	at USC	-17	41-23 W	u72
11/17	at Tulane			
11/26	Memphis			

South Alabama ISU: 8-2, ATS: 7-3, O/U: 6-4				
Date	Opponent	Line	Score	ATS
9/3	Nicholls State	-13	48-7 W	u53
9/10	at Central Mich	-9	31-3 W	u55
9/17	at UCLA	+15	31-32 W	u55
9/24	Louisiana Tech	-13	38-14 W	u59
10/1	at UL-Lafayette	-8	20-17 L	u47
10/8				
10/15	UL-Monroe	-17	41-34 L	u51
10/20	Troy	-3	6-10 L	u47
10/29	at Arkansas State	-9	31-3 W	u55
11/5	at Ga Southern	-3	31-3 W	u60
11/12	Texas State	-16	38-21 W	u66
11/19	at Southern Miss			
11/26	Old Dominion			

South Carolina ISU: 6-4, ATS: 5-5, O/U: 5-5				
Date	Opponent	Line	Score	ATS
9/3	Georgia State	-12	35-14 W	u55
9/10	at Arkansas	+9	30-44 L	u56
9/17	Georgia	+25	7-48 L	u55
9/24	Charlotte	-23	56-20 W	u66
10/1	So. Carolina St	-40	50-10 L	u57
10/8	at Kentucky	+4	24-14 W	u44
10/15				
10/22	Texas A&M	+3	30-24 W	u44
10/29	Missouri	-3	10-23 L	u45
11/5	at Vanderbilt	-6	38-27 W	u49
11/12	at Florida	+8	6-38 L	u58
11/19	Tennessee			
11/26	at Clemson			

Southern Miss ISU: 5-5, ATS: 7-3, O/U: 6-4				
Date	Opponent	Line	Score	ATS
9/3	Liberty-4ot	+3	27-29 W	u50
9/10	at Miami (FL)	+27	7-30 W	u50
9/17	Northwestern St	-33	64-10 W	u50
9/24	at Tulane	+12	27-24 W	u48
10/1				
10/8	at Troy	+7	10-27 L	u44
10/15	Arkansas State	-4	20-19 L	u53
10/22	at Texas State	-2	20-14 W	u43
10/27	UL-Lafayette	-2	39-24 W	u43
11/5	Georgia State	-2	14-42 L	u48
11/12	at Coa. Carolina	+5	23-26 W	u48
11/19	South Alabama			
11/26	at UL-Monroe			

Stanford ISU: 3-7, ATS: 2-8, O/U: 4-5-1				
Date	Opponent	Line	Score	ATS
9/3	Colgate	-40	41-10 L	u51
9/10	USC	+9	28-41 L	u66
9/17				
9/24	at Washington	+14	22-40 L	p62
10/1	at Oregon	+17	27-45 L	u63
10/8	Oregon State	+4	27-28 W	u53
10/15	at Notre Dame	+16	16-14 W	u53
10/22	Arizona State	-3	15-14 L	u52
10/29	at UCLA	+16	13-38 L	u64
11/5	Washington St	+3	14-52 L	u48
11/12	at Utah	+24	7-42 L	u54
11/19	at California			
11/26	BYU			

Syracuse ISU: 6-4, ATS: 5-4, O/U: 3-6				
Date	Opponent	Line	Score	ATS
9/3	Louisville	+5	31-7 W	u55
9/10	at Connecticut	-23	38-14 W	u55
9/17	Purdue	-1	32-29 W	u59
9/24	Virginia	-10	22-20 L	u53
10/1	Wagner	-54	59-0 N/A	63
10/8				
10/15	NC State	-3	24-9 W	u42
10/22	at Clemson	+14	21-27 W	u50
10/29	Notre Dame	+1	24-41 L	u48
11/5	at Pittsburgh	-3	19-19 L	u47
11/12	Florida State	+7	3-38 L	u51
11/19	at Wake Forest			
11/26	at Boston College			

TCU ISU: 10-0, ATS: 8-1, O/U: 6-4				
Date	Opponent	Line	Score	ATS
9/2	at Colorado	-13	38-13 W	u59
9/10	Tarleton State	-40	59-17 W	u66
9/17				
9/24	at SMU	-2	42-34 W	u72
10/1	Oklahoma	+5	55-24 W	u69
10/8	at Kansas	-7	38-31 P	u70
10/15	Oklahoma St-2ot	-5	43-40 L	u69
10/22	Kansas State	-3	38-28 W	u54
10/29	at West Virginia	-7	41-31 W	u69
11/5	Texas Tech	-8	34-24 W	u69
11/12	at Texas	+7	17-10 W	u66
11/19	at Baylor			
11/26	Iowa State			

Temple ISU: 3-7, ATS: 2-7, O/U: 5-5				
Date	Opponent	Line	Score	ATS
9/2	at Duke	+9	0-30 L	u51
9/10	Lafayette	-14	30-14 W	u59
9/17	Rutgers	+18	14-16 W	u44
9/24	at Massachusetts	-10	28-0 W	u42
10/1	at Memphis	+18	3-24 L	u50
10/8				
10/13	at UCF	+23	13-70 L	u46
10/21	Tulsa	+13	16-27 W	u53
10/29	at Navy-ot	+14	20-27 W	u41
11/5	USF	+3	54-28 W	u49
11/12	at Houston	+20	36-43 W	u56
11/19	at Cincinnati			
11/26	East Carolina			

Tennessee ISU: 9-1, ATS: 8-2, O/U: 6-4				
Date	Opponent	Line	Score	ATS
9/1	Ball State	-37	59-10 W	u66
9/10	at Pittsburgh-ot	-6	34-27 W	u67
9/17	Akron	-47	63-6 W	u67
9/24	Florida	-11	38-33 L	u62
10/1				
10/8	at LSU	-2	40-13 W	u63
10/15	Alabama	+9	52-49 W	u68
10/22	UT-Martin	-38	65-24 W	u71
10/29	Kentucky	-10	44-6 W	u65
11/5	at Georgia	+10	13-27 L	u63
11/12	Missouri	-19	66-24 W	u57
11/19	at South Carolina			
11/26	at Vanderbilt			

Texas ISU: 6-4, ATS: 6-4, O/U: 4-6				
Date	Opponent	Line	Score	ATS
9/3	UL-Monroe	-37	52-10 W	u64
9/10	Alabama	+21	19-20 W	u64
9/17	UTSA	-13	41-20 W	u67
9/24	at Texas Tech-ot	-7	34-37 L	u50
10/1	West Virginia	-7	38-20 W	u61
10/8	Yoklahoma	-7	49-0 W	u65
10/15	Iowa State	-15	24-21 L	u58
10/22	at Oklahoma St	-6	34-41 L	u58
10/29				
11/5	at Kansas State	-3	34-27 W	u54
11/12	TCU	-7	10-17 L	u56
11/19	at Kansas			
11/26	Baylor			

Texas A&M ISU: 3-7, ATS: 3-6-1, O/U: 4-6				
Date	Opponent	Line	Score	ATS
9/3	Sam Houston St	-36	31-0 W	u64
9/10	Appalachian St	-18	14-17 L	u54
9/17	Miami (FL)	-6	17-9 W	u45
9/24	at Arkansas	-1	23-21 W	u51
10/1	at Mississippi St	+4	24-42 L	u51
10/8	at Alabama	+24	20-24 W	u48
10/15				
10/22	at South Carolina	-3	24-30 L	u44
10/29	Ole Miss	-3	28-31 P	u55
11/5	Florida	+1	24-41 L	u53
11/12	at Auburn	+1	10-13 L	u48
11/19	Massachusetts			
11/26	LSU			

Texas ISU: 3-7, ATS: 5-5, O/U: 5-5				
Date	Opponent	Line	Score	ATS
9/3	at Nevada	-2	14-38 L	u51
9/10	FIU	-14	41-12 W	u62
9/17	at Baylor	-27	34-0 W	u53
9/24	Houston Baptist	-27	34-0 W	u53
10/1	at James Madison	+22	13-40 L	u51
10/8	Appalachian St	+19	36-24 W	u54
10/15	at Troy	+16	14-17 W	u47
10/22	Southern Miss	+2	14-20 L	u43
10/29				
11/5	at UL-Monroe	+2	30-31 W	u52
11/12	at South Alabama	+16	21-38 L	u46
11/19	at Arkansas State			
11/26	at Louisiana Tech			

Texas Tech ISU: 5-5, ATS: 5-5, O/U: 7-3				
Date	Opponent	Line	Score	ATS
9/3	Murray State	-38	63-10 W	u63
9/10	Houston-2ot	-4	33-30 L	u62
9/17	at NC State	+10	14-27 L	u55
9/24	Texas-ot	+7	37-34 W	u60
10/1	at Kansas State	+7	28-37 L	u56
10/8	at Oklahoma St	+11	31-41 W	u65
10/15				
10/22	West Virginia	-5	48-10 W	u65
10/29	Baylor	-1	17-45 L	u61
11/5	at TCU	+8	24-34 L	u62
11/12	Kansas	-3	43-28 W	u69
11/19	at Iowa State			
11/26	Oklahoma			

Toledo ISU: 7-4, ATS: 4-7, O/U: 6-5				
Date	Opponent	Line	Score	ATS
9/1	LIU	-47	37-0 L	u57
9/10	Massachusetts	-28	55-10 W	u49
9/17	at Ohio State	+31	21-77 L	u63
9/24	at San Diego St	-2	14-17 L	u44
10/1	Central Michigan	-6	38-17 W	u56
10/8	at No. Illinois	-6	52-32 W	u59
10/15	Kent State	-7	52-31 W	u62
10/22	at Buffalo	-7	27-34 L	u56
10/29	at Eastern Mich	-4	27-24 L	u54
11/5				
11/12	Ball State	-13	28-21 L	u53
11/15	Bowling Green	-15	35-42 L	u56
11/25	at Western Michigan			
Troy ISU: 8-2, ATS: 7-3, O/U: 3-7				
Date	Opponent	Line	Score	ATS

Troy ISU: 8-2, ATS: 7-3, O/U: 3-7				
Date	Opponent	Line	Score	ATS
9/10	Ole Miss	-2	18-28 W	u57
9/17	Alabama A&M	-37	38-17 L	u52
9/24	at Appalachian St	+14	28-32 W	u52
10/1	Marshall	+3	16-7 W	u51
10/8	at W. Kentucky	+5	34-27 W	u55
10/15	Southern Miss	-7	27-10 W	u44
10/22	Texas State	-16	17-14 L	u47
10/29	at South Alabama	+3	10-6 W	u47
11/5				
11/12	at UL-Lafayette	-3	23-17 W	u42
11/19	UL-Monroe	-8	10-9 L	u45