

# S2600 Series

Pressure meter



# BlueLine

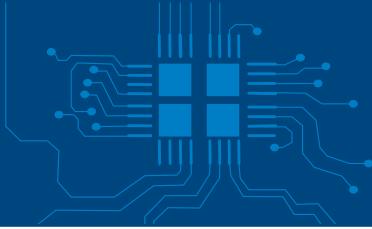
**INSTRUMENTS.co.uk**

## BlueLine®



# SYSTRONIK

Messtechnologie



### Practical and light.....

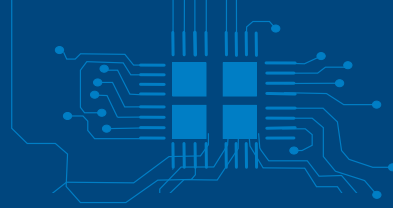
The pressure meters Series S2600 are ergonomically shaped, lightweight hand-held instruments. A large illuminated LCD display allows simultaneous display of two measured values. The entire measurement values can be displayed in eight different units (bar, mbar, Pa, kPa, hPa, mmHg, inHg, psi). Three magnets integrated in the protection holster allow hands-free operation, e.g. while adjusting gas heaters. Hose connection about 8 mm socket connection or 3 mm Festo-terminal connection. The Series S2600 have a manual and automatic zero adjustment and automatic control function.

### Application.....

For measurement of pressure, vacuum and differential pressure. For gaseous, dry, non-aggressive media in non-hazardous areas. Ideal for use in industrial, medical and air conditioning. Other typical applications: chimney draft, inlet pressure, nozzle pressure, pressure drop in flowing gases, filter check, ventilation systems or ducts, production and extraction, check the burner pressure, control of liquid tanks, etc.

Technical specifications					
Model	Range (mbar)	max. gauge pressure (bar)	Resolution (mbar)	Accuracy (% of measured value)	Connections
S2601	150	1.35	0.01 (< 19.99) or 0.1 (> 20.0)	± 0.03 mbar or 1.0 ±1 Digit	2x Standard (ø 8mm)
S2610	1000	3.0	0.1 (< 199.9) or 1 (> 200)	± 0.3 mbar oder 1.0 ± 1 Digit	2x Standard (ø 8mm)
S2650	5000	10.0	0.1 (< 199.9) or 1 (> 200)	± 0.7 mbar oder 1.0 ± 1 Digit	2x Festo (ø 3 mm)
S2680	8000	10.5	0.1 (< 199.9) or 1 (> 200)	± 1.2 mbar oder 1.0 ± 1 Digit	2x Festo (ø 3 mm)

Technical data	
General specifications	
Dimensions ( L x W x D )	66 x 143 x 37 mm (inclusive protective holster)
Weight	About 250 g ( inclusive protective holster)
Material housing	Polyamide (PA)
Reponse time	T 90 < 10 s
Connections	2 x 8 mm or 2 x Festo (3 mm)
Enviromental temperature	0° C to +40° C
Medial temperature	0° C to +40°C
Storage temperature	-20°C to +50°C



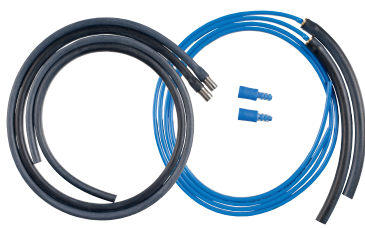
# Accessories

## Pumpball with Valve



Hand-ball pump with valve and silicone Hose (340 mm)

## Connection set



Hose for Differential pressure measurement

## Festo adapter connection



Transition adapter  $\varnothing$  8 mm to 3 mm  $\varnothing$  for Festo connectors

## Impression valve



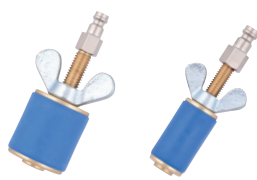
Impression valve with quick coupling and precision metering for easy adjustment of the pressure levels.

## Conical test plug



Conical plugs with nipple for quick coupling system for common pipe diameter 2.1" 3.4", 1" and 1 1/4"

## Cylindrical test plug



Cylindrical plugs with nipple for quick coupling system for common pipe diameter 2.1" 4.3", 1" and 1 1/4"

**UK SALES & SERVICE**

# BlueLine

**INSTRUMENTS.co.uk**

Unit 15 East Lane Cuddington Northwich Cheshire CW8 2QQ  
Tel: 01606 30840 Email: [service@bluelineinstruments.co.uk](mailto:service@bluelineinstruments.co.uk)