

## 测试报告 (SVHC)

No. CANEC1702120116

日期: 2017年02月24日 第1页,共10页

东莞九兆金属科技有限公司  
东莞市常平镇横江夏村大墩工业区

以下测试之样品是由申请者所提供及确认: 不锈钢

SGS工作编号: CP17-006168 - SZ

材质: 316LS

样品接收日期: 2017年02月17日

测试周期: 2017年02月17日 - 2017年02月24日

测试要求: 根据客户要求,

(i) 基于欧洲化学品管理署截止2017年1月12日公布的供授权审议的高关注物质候选清单(根据欧盟第1907/2006号REACH法规), 对55种无机的高关注物质(SVHC)及另外11种有机的金属高关注物质(SVHC)进行筛分测试。

测试结果: 请参见下一页

总结:

根据具体的范围和筛分测试, 所提交样品中SVHC测试结果 $\leq 0.1\%$ (w/w)。	通过
--------------------------------------------------	----

通标标准技术服务有限公司广州分公司  
授权签名

梁康宁

Alkene Liang 梁康宁  
批准签署人

备注:本报告是编号为CANEC1702120115报告的中文版本



## 测试报告 (SVHC)

No. CANEC1702120116

日期: 2017年02月24日 第2页,共10页

备注:

- (1) 本报告所涉及的关于特定高关注物质的化学分析是根据欧洲化学品管理署发布的下列文件, 利用现有的分析技术完成的。

<http://echa.europa.eu/web/guest/candidate-list-table>

这些文件清单由欧洲化学品管理署评估, 将来可能会有变化。

- (2) 关于物品:

根据欧盟第1907/2006 (EC) 号法规, 如果满足以下两个条件, 如果物质符合第57条中的标准并根据第59条第一款被确定, 物品的任何欧洲制造商或进口商应根据第7条第4款向欧盟化学品管理署进行通报: (a) 候选清单中的物质在物品中的总含量超过1吨/年/生产商或进口商; (b) 候选清单中的物质在物品中的总含量以质量分数计超过0.1% 的浓度。

欧盟第1907/2006 (EC) 号法规第33条规定, 含有满足第57条中的标准并根据第59条第一款被确定且质量分数大于0.1%的物质的物品的所有供应商应向物品接受者提供其可获取的充足信息, 以使物品使用安全, 这些信息至少包括含有的候选清单中物质的名称。

SGS采用欧盟法院对REACH物品定义的裁定, 除非另有说明。详细的解释请见下列网址:

<http://www.sgs.com/-/media/global/documents/technical-documents/technical-bulletins/sgs-crs-position-statement-on-svhc-in-articles-a4-en-16-06.pdf?la=en>

- (3) 关于材料:

报告中的测试结果是基于测试样品。如样品是均一材质, 当其构成成品时, 此结果不能代表成品中的SVHC浓度。如样品为均一材质等比例合测, 这些材质也可能来自不同的物品。

如果样品是一种物质或混合物, 并且直接出口到欧盟, 客户有责任遵守欧盟第1907/2006号REACH法规第31条供应链信息传递的义务和附件十四中的授权高关注物质授权的责任。

- (4) 关于物质和配制品:

如果样品中高关注物质的浓度超过0.1% (w/w)和/或欧盟第1272/2008号CLP法规和欧盟委员会条例第790/2009号中设定的特殊浓度限值, 建议客户根据欧盟第1907/2006号REACH法规对有关高关注物质准备安全数据表(SDS)以符合供应链传递信息的义务, 如:

- 根据欧盟第1272/2008号CLP法规被列为有害物质。

- 根据危险混合物指令1999/45/EC或欧盟第1272/2008号CLP法规被列为危险混合物, 而其浓度大于或等于危险混合物指令1999/45/EC第3条(3)中规定的限制数值或欧盟第1272/2008号CLP法规附件六第3部分列出的较低值;或

- 根据危险混合物指令1999/45/EC并未列为危险混合物, 但包含:

(a) 对人类健康或环境有害的物质, 而在固体或液体混合物(即非气体混合物)中其浓度 $\geq 1\%$ (w/w)或在气体混合物中占体积 $\geq 0.2\%$ , 或

(b) PBT或vPvB物质, 在固体或液体混合物(即非气体混合物)中浓度 $\geq 0.1\%$ (w/w), 或

(c) 授权审议的高关注物质候选清单上的物质(除上述以外的原因)在非气体混合物中的浓度 $\geq 0.1\%$



## 测试报告 (SVHC)

No. CANEC1702120116

日期: 2017年02月24日 第3页,共10页

(w/w), 或  
(d) 设有欧洲范围内工作场所接触限值的物质。

(5) 如果样品中SVHC的测试结果超过报告限, 建议客户进一步定量分析检测含有SVHC的组分并且得到SVHC物质的准确浓度。

### 测试样品:

#### 测试样品描述:

样品编号	SGS样品ID	描述
SN1	CAN17-021201.004	银色金属

### 测试方法:

SGS内部方法- GZTC CHEM-TOP-092-01, 采用 ICP-OES、UV-VIS分析。

Unless otherwise agreed in writing, this document is issued by the Company subject to its General Conditions of Service printed overleaf, available on request or accessible at <http://www.sgs.com/en/Terms-and-Conditions.aspx> and, for electronic format documents, subject to Terms and Conditions for Electronic Documents at <http://www.sgs.com/en/Terms-and-Conditions/Terms-e-Document.aspx>. Attention is drawn to the limitation of liability, indemnification and jurisdiction issues defined therein. Any holder of this document is advised that information contained hereon reflects the Company's findings at the time of its intervention only and within the limits of Client's instructions, if any. The Company's sole responsibility is to its Client and this document does not exonerate parties to a transaction from exercising all their rights and obligations under the transaction documents. This document cannot be reproduced except in full, without prior written approval of the Company. Any unauthorized alteration, forgery or falsification of the content or appearance of this document is unlawful and offenders may be prosecuted to the fullest extent of the law. Unless otherwise stated the results shown in this test report refer only to the sample(s) tested.

Attention: To check the authenticity of testing /inspection report & certificate, please contact us at telephone: (86-755) 8307 1443, or email: [CN.Doccheck@sgs.com](mailto:CN.Doccheck@sgs.com)



SGS-CSTC (Shenzhen) Technical Services Co., Ltd.  
Guangzhou Branch Testing Center Chemical Laboratory.

198 Kazhu Road, Sciotech Park Guangzhou Economic & Technology Development District, Guangzhou, China 510663 t (86-20) 82155555 f (86-20) 82075113 www.sgs.com.cn  
中国·广州·经济技术开发区科学城科珠路198号 邮编: 510663 t (86-20) 82155555 f (86-20) 82075113 e [sgs.china@sgs.com](mailto:sgs.china@sgs.com)

## 测试报告 (SVHC)

No. CANEC1702120116

日期: 2017年02月24日 第4页,共10页

### 测试结果: (SVHC候选清单中的高关注物质)

批次	物质名称	CAS No.	004 浓度 (%)	RL (%)
-	所有测试的候选清单中的SVHC	-	ND	-

### 注释:

1. 上表仅显示检出的SVHC, 低于RL的SVHC没有列出。所有测试的SVHC请参见附录。
2. RL = 报告极限值, 所有RL是基于均一材质的测试。ND = 未检出(<RL), ND针对SVHC物质。
- 3.\* 测试结果是由选定的元素或标记物的结果并基于最坏的情况计算得出。详细信息请参见SGS REACH网站: [www.reach.sgs.com/substance-of-very-high-concern-analysis-information-page.htm](http://www.reach.sgs.com/substance-of-very-high-concern-analysis-information-page.htm)
4. RL = 0.005% 是针对元素 (例如钴、砷、铅、铬(VI)、铝、锆、硼、锶、锌、铈、钛、钡和镉), 除了钨的RL= 0.0005%, 硼的RL= 0.0025%(仅对四氟硼酸铅)。
5. 硼化合物的结果由ICP-OES测试的水提取的硼元素结果换算得出。



## 测试报告 (SVHC)

No. CANEC1702120116

日期: 2017年02月24日 第5页,共10页

附录

所有测试的SVHC:

批次	序号	物质名称	CAS No.	RL (%)
I	1	二氯化钴*	7646-79-9	0.005
I	2	五氧化二砷*	1303-28-2	0.005
I	3	三氧化二砷*	1327-53-3	0.005
I	4	砷酸氢铅*	7784-40-9	0.005
I	5	重铬酸钠*	7789-12-0, 10588-01-9	0.005
I	6	三乙基砷酸酯*	15606-95-8	0.005
II	7	铬酸铅*	7758-97-6	0.005
II	8	钼铬红(C.I.颜料红104)*	12656-85-8	0.005
II	9	铅铬黄(C.I.颜料黄34)*	1344-37-2	0.005
III	10	重铬酸铵*	7789-09-5	0.005
III	11	硼酸*	10043-35-3, 11113-50-1	0.005
III	12	无水四硼酸钠*	1303-96-4, 1330-43-4, 12179-04-3	0.005
III	13	铬酸钾*	7789-00-6	0.005
III	14	重铬酸钾*	7778-50-9	0.005
III	15	铬酸钠*	7775-11-3	0.005
III	16	水合硼酸钠*	12267-73-1	0.005
IV	17	铬酸, 铬酸及重铬酸低聚物, 重铬酸*	7738-94-5 - 13530-68-2	0.005
IV	18	三氧化铬*	1333-82-0	0.005
IV	19	碳酸钴*	513-79-1	0.005



## 测试报告 (SVHC)

No. CANEC1702120116

日期: 2017年02月24日 第6页,共10页

附录

所有测试的SVHC:

批次	序号	物质名称	CAS No.	RL (%)
IV	20	乙酸钴*	71-48-7	0.005
IV	21	硝酸钴*	10141-05-6	0.005
IV	22	硫酸钴*	10124-43-3	0.005
V	23	铬酸锶*	7789-06-2	0.005
VI	24	硅酸铝耐火陶瓷纤维*	650-017-00-8 (Index no.)	0.005
VI	25	砷酸*	7778-39-4	0.005
VI	26	砷酸钙*	7778-44-1	0.005
VI	27	铬酸铬*	24613-89-6	0.005
VI	28	叠氮化铅*	13424-46-9	0.005
VI	29	苦味酸铅*	6477-64-1	0.005
VI	30	史蒂芬酸铅*	15245-44-0	0.005
VI	31	氢氧化铬酸锌*	49663-84-5	0.005
VI	32	氢氧化铬酸锌钾*	11103-86-9	0.005
VI	33	砷酸铅*	3687-31-8	0.005
VI	34	氧化锆硅酸铝耐火陶瓷纤维*	650-017-00-8 (Index no.)	0.005
VII	35	三氧化二硼*	1303-86-2	0.005
VII	36	甲基磺酸铅*	17570-76-2	0.005
VIII	37	二盐基邻苯二甲酸铅*	69011-06-9	0.005
VIII	38	碱式乙酸铅*	51404-69-4	0.005
VIII	39	双(十八烷基)二氧化三铅*	12578-12-0	0.005



Unless otherwise agreed in writing, this document is issued by the Company subject to its General Conditions of Service printed overleaf, available on request or accessible at <http://www.sgs.com/en/Terms-and-Conditions.aspx> and, for electronic format documents, subject to Terms and Conditions for Electronic Documents at <http://www.sgs.com/en/Terms-and-Conditions/Terms-e-Documents.aspx>. Attention is drawn to the limitation of liability, indemnification and jurisdiction issues defined therein. Any holder of this document is advised that information contained hereon reflects the Company's findings at the time of its intervention only and within the limits of Client's instructions, if any. The Company's sole responsibility is to its Client and this document does not exonerate parties to a transaction from exercising all their rights and obligations under the transaction documents. This document cannot be reproduced except in full, without prior written approval of the Company. Any unauthorized alteration, forgery or falsification of the content or appearance of this document is unlawful and offenders may be prosecuted to the fullest extent of the law. Unless otherwise stated the results shown in this test report refer only to the sample(s) tested.

Attention: To check the authenticity of testing /inspection report & certificate, please contact us at telephone: (86-755) 8307 1443, or email: CN\_Doccheck@sgs.com

## 测试报告 (SVHC)

No. CANEC1702120116

日期: 2017年02月24日 第7页,共10页

附录

所有测试的SVHC:

批次	序号	物质名称	CAS No.	RL (%)
VIII	40	C16-18-脂肪酸铅*	91031-62-8	0.005
VIII	41	四氟硼酸铅*	13814-96-5	0.005
VIII	42	氨基氰铅盐*	20837-86-9	0.005
VIII	43	硝酸铅*	10099-74-8	0.005
VIII	44	一氧化铅*	1317-36-8	0.005
VIII	45	碱式硫酸铅*	12036-76-9	0.005
VIII	46	四氧化三铅*	1314-41-6	0.005
VIII	47	钛酸铅*	12060-00-3	0.005
VIII	48	钛酸铅锆*	12626-81-2	0.005
VIII	49	硫酸四氧化五铅*	12065-90-6	0.005
VIII	50	铅锑黄*	8012-00-8	0.005
VIII	51	掺杂铅的硅酸钡*	68784-75-8	0.005
VIII	52	硅酸铅*	11120-22-2	0.005
VIII	53	二碱式亚硫酸铅*	62229-08-7	0.005
VIII	54	四乙基铅*	78-00-2	0.005
VIII	55	硫酸三氧化四铅*	12202-17-4	0.005
VIII	56	碱式碳酸铅*	1319-46-6	0.005
VIII	57	二碱式亚磷酸铅*	12141-20-7	0.005
IX	58	氧化镉*	1306-19-0	0.005
IX	59	镉*	7440-43-9	0.005
X	60	硫化镉*	1306-23-6	0.005



Unless otherwise agreed in writing, this document is issued by the Company subject to its General Conditions of Service printed overleaf, available on request or accessible at <http://www.sgs.com/en/Terms-and-Conditions.aspx> and, for electronic format documents, subject to Terms and Conditions for Electronic Documents at <http://www.sgs.com/en/Terms-and-Conditions/Terms-e-Documents.aspx>. Attention is drawn to the limitation of liability, indemnification and jurisdiction issues defined therein. Any holder of this document is advised that information contained hereon reflects the Company's findings at the time of its intervention only and within the limits of Client's instructions, if any. The Company's sole responsibility is to its Client and this document does not exonerate parties to a transaction from exercising all their rights and obligations under the transaction documents. This document cannot be reproduced except in full, without prior written approval of the Company. Any unauthorized alteration, forgery or falsification of the content or appearance of this document is unlawful and offenders may be prosecuted to the fullest extent of the law. Unless otherwise stated the results shown in this test report refer only to the sample(s) tested.

Attention: To check the authenticity of testing /inspection report & certificate, please contact us at telephone: (86-755) 8307 1443, or email: CN.Doccheck@sgs.com

测试报告  
(SVHC)

No. CANEC1702120116

日期: 2017年02月24日 第8页,共10页

附录

所有测试的SVHC:

批次	序号	物质名称	CAS No.	RL (%)
X	61	乙酸铅*	301-04-2	0.005
XI	62	氯化镉*	10108-64-2	0.005
XI	63	水合过硼酸钠*	-	0.005
XI	64	过硼酸钠*	7632-04-4	0.005
XII	65	氟化镉*	7790-79-6	0.005
XII	66	硫酸镉*	10124-36-4, 31119-53-6	0.005

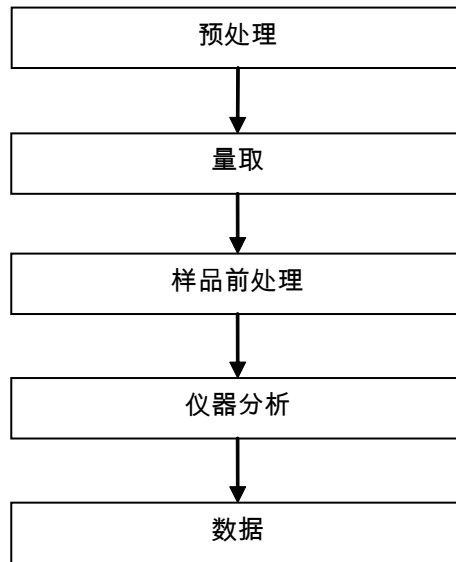




附件

### SVHC 测试流程图

- 1) 分析人员 : 吕智浩 / 钟顺好
- 2) 项目负责人 : 刘垠



Unless otherwise agreed in writing, this document is issued by the Company subject to its General Conditions of Service printed overleaf, available on request or accessible at <http://www.sgs.com/en/Terms-and-Conditions.aspx> and, for electronic format documents, subject to Terms and Conditions for Electronic Documents at <http://www.sgs.com/en/Terms-and-Conditions/Terms-e-Documents.aspx>. Attention is drawn to the limitation of liability, indemnification and jurisdiction issues defined therein. Any holder of this document is advised that information contained hereon reflects the Company's findings at the time of its intervention only and within the limits of Client's instructions, if any. The Company's sole responsibility is to its Client and this document does not exonerate parties to a transaction from exercising all their rights and obligations under the transaction documents. This document cannot be reproduced except in full, without prior written approval of the Company. Any unauthorized alteration, forgery or falsification of the content or appearance of this document is unlawful and offenders may be prosecuted to the fullest extent of the law. Unless otherwise stated the results shown in this test report refer only to the sample(s) tested.

Attention: To check the authenticity of testing /inspection report & certificate, please contact us at telephone: (86-755) 8307 1443, or email: CN\_Doccheck@sgs.com

## 测试报告 (SVHC)

No. CANEC1702120116

日期: 2017年02月24日 第10页,共10页

样品照片:



此照片仅限于随SGS正本报告使用

\*\*\* 报告完 \*\*\*

