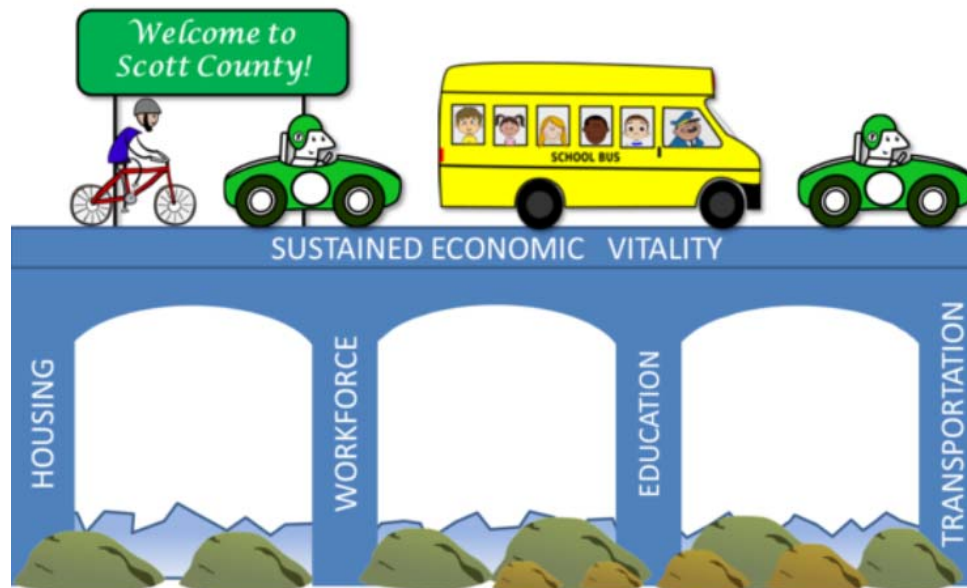


50 by 30

Live, Learn, Earn



50 by 30: LIVE ~ LEARN ~ EARN

Transportation Workgroup

June 22, 2016

A big picture approach helps align community efforts



Phases of the big picture approach

We are here →



Framing Goal Outcomes

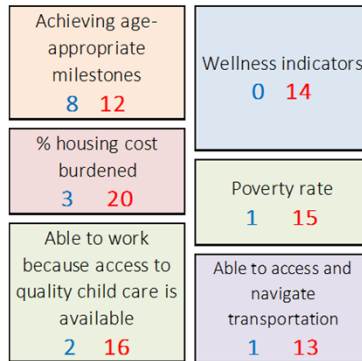


Goal statement from Steering Committee

- 50 by 30 is working to provide community supports so that:

Scott County residents are
Stable, Connected, Educated
and Contributing.

Retreat Summary

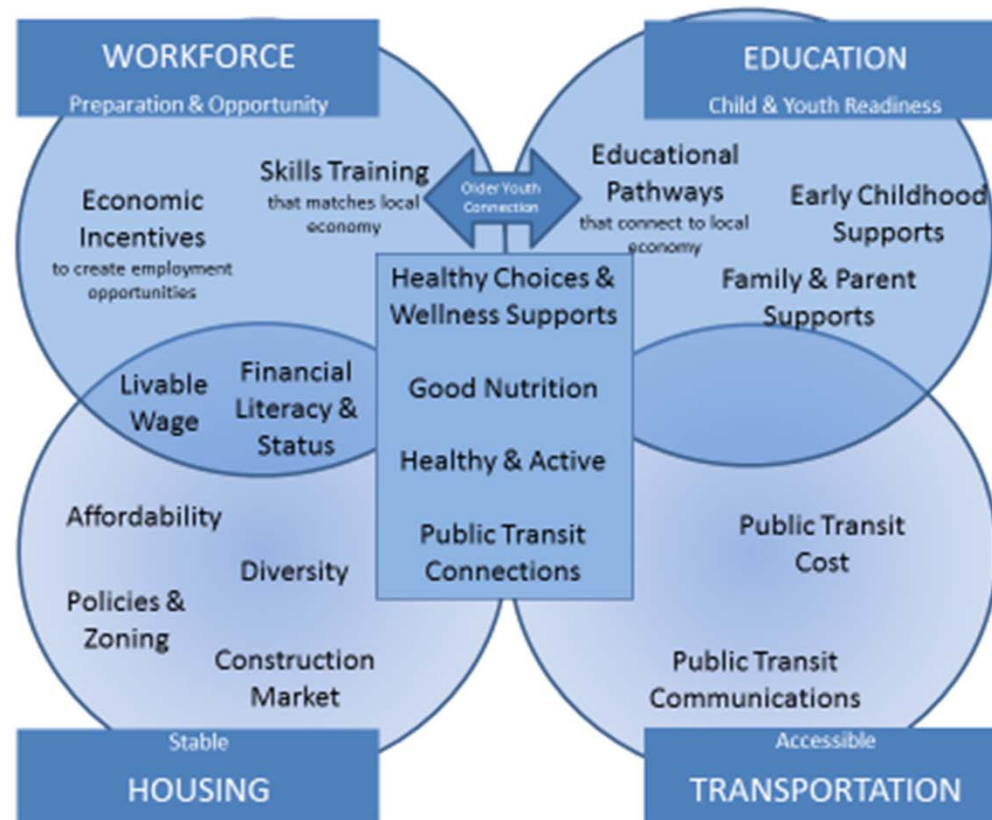


Community Challenges
Ability to access and navigate transportation
Physical health
Percent income going to housing
Seniors - stable housing
Able to work because access to child care is available
Families with affordable housing
Poverty rate
Working full-time and part-time jobs
Percent employed at living wage
Children 0-5 reaching developmental milestones
Percent housing cost burden on young families

Working Groups	Common Themes	# of Local Causes grouped by Community Challenge									
		1	2	3	4	5	6	7	8	9	10
Educational Preparedness	Lack of Family Support	6	3	2	1	1	1	1	1		
	Lack of Community Support	2	2	1	1						
	Lack of Public Funding/Poor Systems	4	2	1	1	1					
	Childcare Conundrum	10	2	2	1	1	1				
	Healthcare and Nutrition Access	9	6	3	2	1					
	Healthy Living	8									
Workforce Development	Personal Financial Status/Background	4	3	2	1	1	1				
	Job Location/Connection to Jobs	4	4	2	2	1	1				
	Economic Systems and Government Funding	3	2	1	1	1					
	Job Training	8	5	2	1	1	1	1			
Transportation	Public Transit: Costs	8	1	1							
	Public Transit: Connections	12	1	1	1						
	Public Transit: Communications	10									
	Public Transit: Accessibility	2									
Housing	Livable Wage	4	4	3	3	2	2	1	1	1	
	Social Systems Barriers	3	2	2	2	1					
	Regulation Systems Barriers	4	4	2	2	1	1	1			
	Construction and Market Issues	4	4	1							
	Lack of Housing Affordability	4	3	2	2	1	1				
	Lack of Diverse Housing Type Availability	7	5	4	3	1	1				

Local conditions & challenges to address

What local conditions / concerns are most relevant for your working group to address? Are there concerns that stand out? In reviewing the “local conditions,” are there any “common cause” themes? Any surprises? What are top priorities to be addressed?



Summary of Workgroup #1 comments

Question to Workgroup: "What's not working?"

- Transit service options
 - Smart Link hours
 - Timing of service in line with jobs
 - Options for reverse commute
 - Lack of local services (Prior Lake/Savage)
 - Communication of services
 - User cost
- River crossings
 - US 169 & I-35
 - Hwy 41 bridge floods
 - Rush hour congestion
- Last mile connections

Goal Development

Keep focus on:

**Core principles/goals related to people =
community supports =
strategies for change**

1. What local conditions / concerns are most relevant for the working group to address?
2. Are there concerns that stand out?
3. What conditions are related to other "pillars"? (Housing, Workforce Readiness, Education Preparedness)

Notes

- _____
- _____
- _____
- _____
- _____
- _____
- _____
- _____
- _____
- _____
- _____