

"Operation case A"

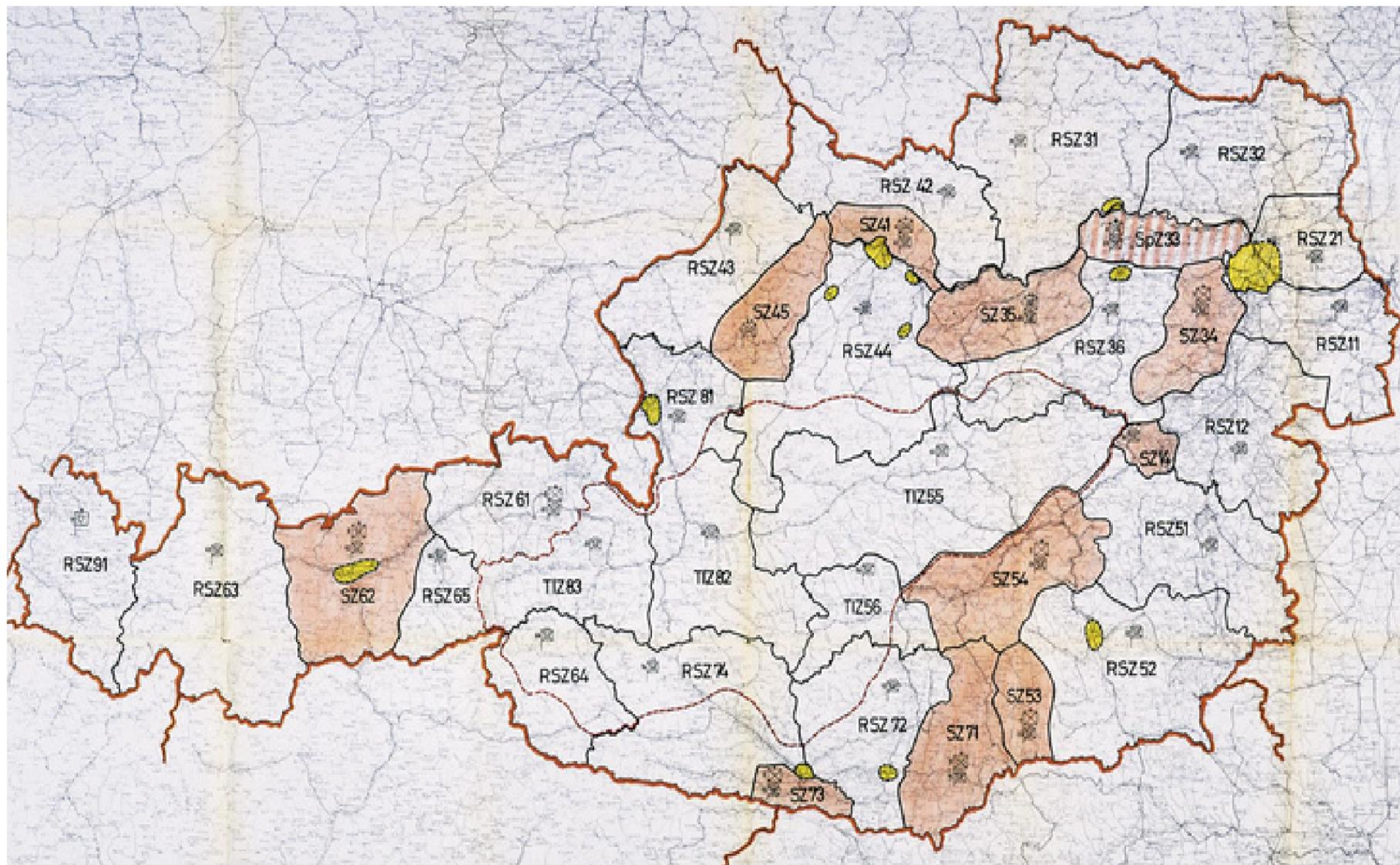
The planning and preparations for the defense of an overall threat to Austria, "Operation Case A", were based on the following presumed enemy intent on the whole: Approach of a reinforced army consisting of two motorized rifle divisions and a tank division of the "Central Group of Troops" - so the name of the parts of the Soviet armed forces stationed in the CSSR - from the Breclav-Brno-Znojmo area through the Weinviertel. It was expected to cross the Danube between Tulln and Krems, and then to advance into the St. Pölten area. At the same time, the 5th Army of the Hungarian People's Army, which consisted of two motorized rifle divisions and one armored division, was expected from the Sopron area through the Vienna Woods towards St. Pölten.

After taking the St. Pölten turntable, it was expected to turn west to take possession of the Linz-Steyr-Wels area. At the same time, the approach of one or two divisions of the Czechoslovak People's Army through the Mühlviertel on the target of Linz was expected. After taking possession of the Linz basin, the relay would have changed and the attack would have continued in the direction of Bavaria.

In addition to these considerations, which mainly concerned the Danube region and parts of Austria north of the Alps, an additional advance by parts of the Hungarian People's Army south of the Alps could not be ruled out. An attack by two Hungarian divisions through East and West Styria, over the Pack and the Soboth and further over the Klagenfurt Basin to Italy was assumed.

(Graphics: Bundesheer / Rizzardi, Keusch) THE PRESUMED INTENTION OF THE WARSAW PACT FORCES IF THE COLD WAR HAD TURNED "HOT" IN AUSTRIA. (GRAPHIC: BUNDESHEER / RIZZARDI, KEUSCH)

Austrian Army Defense Zones



Warsaw Pact Central & Southern Groups of Forces Attack



