

# Roving ChessNuts CHESS Teasers



NEWS, RESULTS, UPCOMING EVENTS, PHOTOS AND INTERESTING STUFF  
MAINLY ABOUT SCHOLASTIC CHESS IN EDMONTON & CHESSNUTS ACTIVITIES

Volume 12, Issue 4 • October 21, 2019

Check out [www.rovingchessnuts.com](http://www.rovingchessnuts.com) for updates between issues of Teasers



## Make chess a regular family activity



Most parents are proud to say their children are chess players, knowing that there are educational benefits for children learning the game and because it is respected as a game of intelligence and etiquette.

Children who have other family members to play usually progress much faster in developing their chess skills. The family that plays chess is nurturing a lifestyle of competitive mental challenges which is good for all ages. In the hectic pace of family life, chess can be the quiet, thoughtful fun

time.

To help families learn and play chess, The Roving ChessNuts have a Family Chess Workshop, Sunday, November 10, 12 noon to 2 p.m., at 12019-76 Street. A family can be represented by one or two students involved in ChessNuts programs and one adult. The cost is \$5 per person and includes take-home material and tips on how to improve the games being played at home.

Register by e-mailing [rovingchessnuts@shaw.ca](mailto:rovingchessnuts@shaw.ca) and advance material will be sent. Limited seats are available and some have already been filled.

### 3rd Annual

# Richard Roberts Memorial Scholastic Chess Tournament

## Sunday, November 3, 2019

Greenfield Hall, 3803 114 Street, Edmonton • Sign-in Time 12:30

**AWARDS AND ACHIEVEMENT PRESENTATIONS START 12:45**



## Three Sections\* of 4-Round Swiss Play for INDIVIDUALS by Rating Open to Kindergarten to Grade 12 Scholastic Players\*\*

Cash Prizes/Trophies/Medals in Open Section A / Trophies and Medals in Sections B, C

Cash prizes for Section A will total a minimum of \$190, higher entries could hike prize fund (\$100 1st overall, \$40 2nd; \$50 first under 1000 rating)\*\*\*

Top Female-only awards in Sections having three or more Previously Rated Females

**Plus section winners names on Memorial Trophy**

## Also SCHOOL TEAM event for any school having at least five players

(Top three scores earned by players in above sections count as team score)

Up to Three Sections of School Teams by Average Rating: School Team Trophy & Medals for Team Members of top two teams per section

**Entry Fee: \$30.00 per player** (\$20 for 2nd player from same Family; \$15 for third)

**Entry Fee will rise to \$35** (\$25 and \$20 if registration occurs after October 26)

No entry fee for school teams as individual fees must be paid by all school team members

**Registration Deadline will be Noon, Friday, November 1**

**No entries accepted after the deadline nor on tournament day**

- link at [www.rovingchessnuts.com](http://www.rovingchessnuts.com) or e-mail [rovingchessnuts@shaw.ca](mailto:rovingchessnuts@shaw.ca)

**Further information & updates on website, in upcoming issues of Chess Teasers, or phone 780-474-2318**

\* Initial flyers on this event listed four sections, but in estimating potential number of entries, it was determined that the three sections used for the 2nd Annual event should be maintained.

\*\*Any player without a recognized chess rating (Chess'n Math or CFC) should obtain one prior to this event or arrange an evaluation through the Roving ChessNuts in order to be placed in the correct section of the tournament. Contact to make an evaluation appointment prior to October 30: [rovingchessnuts@shaw.ca](mailto:rovingchessnuts@shaw.ca) or 780-474-2318.

\*\*\* Section A is open to any player rated over 700, but it is expected that the majority of entrants could be rated over 900. Watch the Players List. Any player rated over 799 when registering will automatically be placed in Section A.

# Reminders to parents of school weekly class members

The numerous schools in Edmonton and area which have weekly chess classes give an opportunity for students to learn chess and benefit from the game's educational qualities, such as using logical reasoning, focusing, planning

and assessing, sportsmanship, confidence, meeting challenges and having fun while learning.

Lunch chess programs offer several challenges.

Student eat their lunch while listening to a lesson, but may be late

because they have to microwave their meal. Meals from a thermos or otherwise difficult to eat can cut into chess practice time or games.

A simple nutritious cold lunch such as a sandwich are ideal for this situation.

### At home ...

Students need to practice between classes. If the student is not allowed to access a chess program on a computer or tablet, then a home chess set and someone to practice with would be a big asset.

## COMMANDO CHESS!



Chess & Fun during November School Break (Tues & Weds)

Full or Half day Chess and Fitness Camps November 12 & 13, 2019

Greenfield Community Hall 3803 114 Street

Chess Learning and Playing with Fitness Activities between games (healthy a.m. & p.m. snacks)

8:30 a.m. to 5:00 p.m. (Drop-off early as 8; pick-up by 5:15) • Students must wear runners and exercise wear for indoor and outdoor

Students Grades 1 to 9 invited to Full Day or Half Day (8:30 to 12:30 or 1 to 5) - full day must bring lunch

All levels of chess\* • Call or text 780-554-7280 on camp days

FULL DAY Camp \$50.00

TWO FULL DAY Camp \$90.00

15% OFF 2nd Fee same family



HALF DAY Camp \$30.00

TWO HALF DAY Camp \$52.00

5% GST must be added • Prepayment or \$25 deposit required by October 21, 2019

Register for these camps by e-mail [rovingchessnuts@shaw.ca](mailto:rovingchessnuts@shaw.ca), phone 780-474-2318, at 12015 76 Street, or at Roving ChessNuts school programs or classes and tournament outside of schools

Camp Souvenir for all participants, chance of rating/other awards commando tournament on Friday afternoon

\* All attending players should have basic understanding of chess. If a player does not have a chess rating and has not received proper instruction in playing the world's most respected board game, we strongly recommend making an appointment for a FREE evaluation at The Roving ChessNuts, 12019 76 Street by appointment 780-474-2318. The evaluation will allow us to better serve the needs of the new camp participant, provide them with a basic chess manual and enough instructions to be better prepared for the camp. \* Only experienced players under Grade 3 can attend.

If you require more information or have questions, please call 780-474-2318 or e-mail [rovingchessnuts@shaw.ca](mailto:rovingchessnuts@shaw.ca); stay updated at [www.rovingchessnuts.com](http://www.rovingchessnuts.com)

### Registration for Commando Chess Camps Please print clearly. Fill in a sheet for each student. November School Break Nov. 12 & 13, 2019 at Greenfield Hall, 3803 114 Street

Circle Your Choices:

Full Day November 12 8:30 a.m. to 5 p.m. \$50

Half Day November 12 8:30 to 12:30 or November 12 Half Day 1:00 to 5:00 \$30

Full Day November 13 8:30 a.m. to 5 p.m. \$50

Half Day November 13 8:30 to 12:30 or November 13 Half Day 1:00 to 5:00 \$30

Both Full Days 8:30 a.m. to 5 p.m. \$90

15% OFF 2nd Fee same family Use 2nd sheet & attach to this one

Both Half Days 8:30 to 12:30 or Both Half Days 1:00 to 5:00 \$52

Name: \_\_\_\_\_ Grade: \_\_\_\_\_ Birthdate (M/D/Y): \_\_\_\_\_

Phone: \_\_\_\_\_ E-mail for updates and notices: \_\_\_\_\_

(NOT shared and used only for scholastic chess purposes)

Address: \_\_\_\_\_ City: \_\_\_\_\_ Postal Code: \_\_\_\_\_

Emergency Contact number(s) during camp: \_\_\_\_\_

Name: \_\_\_\_\_

Any information that instructor and supervisors should know about the student (severe allergies, learning difficulties, etc.)

If third member of family is attending, please ask for a quote.

5% GST must be added • Prepayment or \$25 deposit required by October 21, 2019

CALCULATED AMOUNT OF CAMP FEES OR INVOICE AMOUNT: \$ \_\_\_\_\_

Cheques preferred, payable to: Roving ChessNuts

Cheque attached \_\_\_\_\_ Credit Card # \_\_\_\_\_ Expires: \_\_\_\_\_

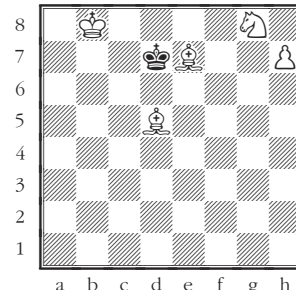
If enrolling an additional child, please put registration forms together and issue one cheque or one card payment.

Roving ChessNuts, 12015 76 Street, Edmonton, Alberta T5B 2C9

Confirmation and Payment of camp attendance can be made by phoning 780-474-2318 Monday to Friday, 8:30 a.m. to 4:30 p.m. or mail completed form with cheque to Roving ChessNuts, 12015 76 St., Edmonton, AB T5B 2C9 or hand in at chess class in envelope

**Commando Tournament**  
Nov. 13 afternoon  
may only be open to  
camp attendees  
Watch for Details

### White to Move and Checkmate on Second Move

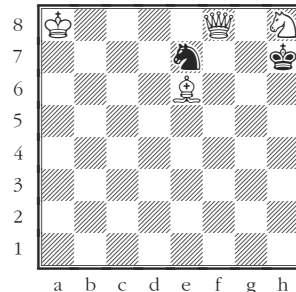


White Move \_\_\_\_\_

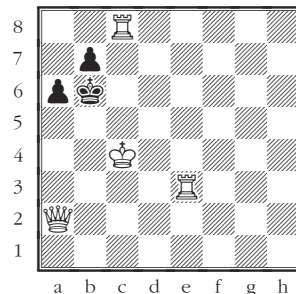
Black Move \_\_\_\_\_

White Move \_\_\_\_\_

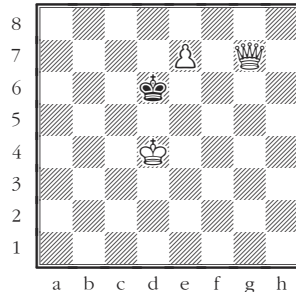
### Puzzle Answers for previous issue



White: Nf7 If black moves king to g6, Qh6 checkmates. If black moves knight, Bf5 checkmates.



White: Qf2 If black moves a5, Re6 mates. If king moves a7, Re7 mates. If king moves a5, Ra3 mates.



White: e8=B Black's only move is Ke6, Qe5 checkmates.