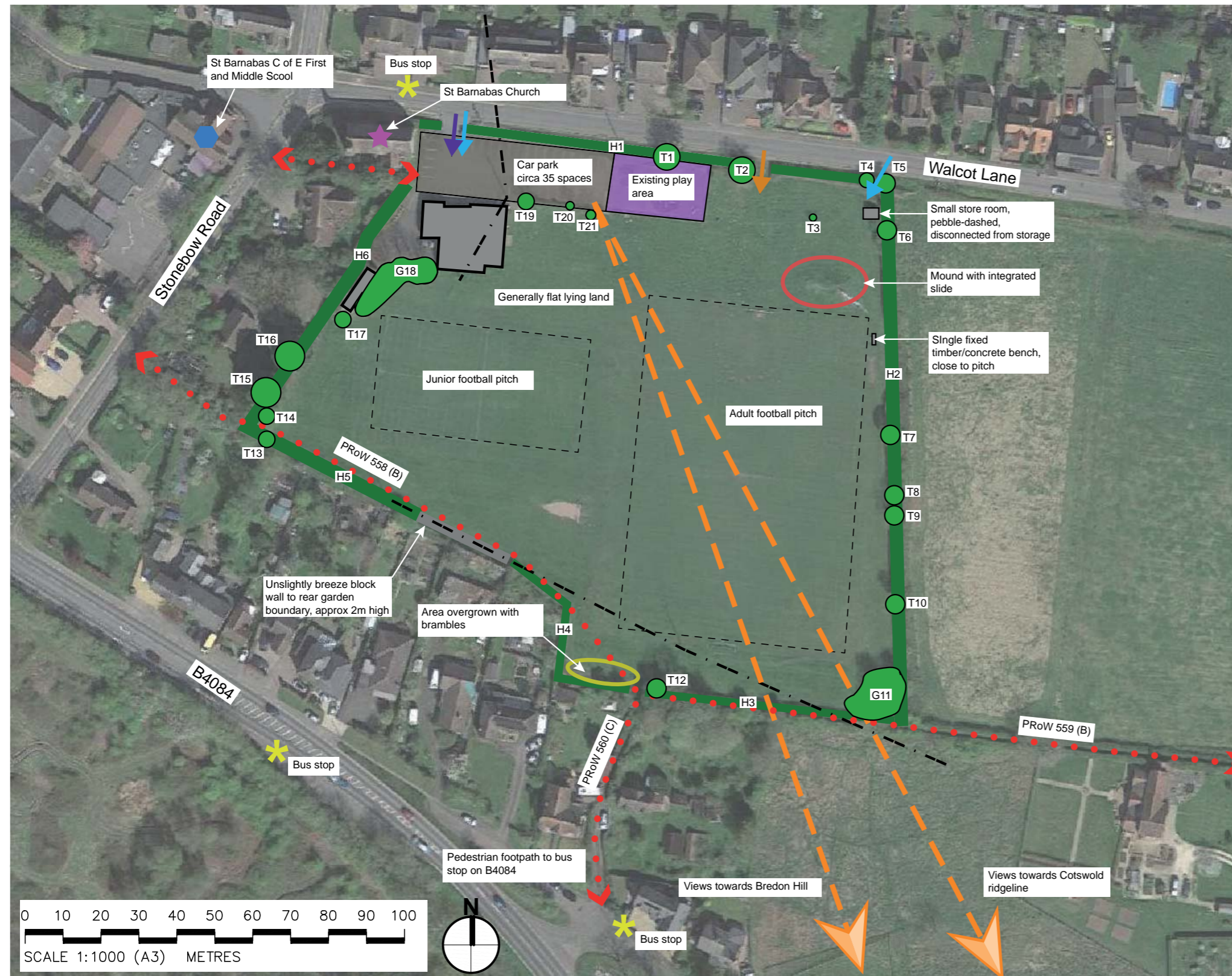


# DRAKES BROUGHTON VILLAGE HALL - OPEN SPACE

## Site Analysis



## Introduction

Drakes Broughton Village Hall Open Space Committee commissioned One Creative Environments Ltd. to analyse and assess the Village Hall open space and recreation area and design a conceptual masterplan. The aim has been to create an inspirational and imaginative area for play and recreation and become an attractive and enjoyable destination for all ages.

## The Site

- The Village Hall lies in the south of the village. It is a relatively flat and featureless recreational space dominated by two football pitches
- Small play area in a dilapidated state, lacking opportunity for imaginative play
- Village Hall has no visual interface with the open space
- Open Space is well contained by hedgerows and few trees present - in a fair/good condition
- 4no. footpaths into the site - PRoW 558(B) along the southern boundary connecting to the wider network of footpaths to the east; PRoW 560(B) from the Worcester Road and bus stop; Footpath by St Barnabas Church from Stonebow Road, connecting to St Barnabas C of E First and Middle School; Footpath from Walcot Lane
- Maintenance access off Walcot Lane
- Key views afforded south to the Cotswolds and Bredon Hill

## Site Constraints



## Site Constraints

- One main access point with real conflict between pedestrians and vehicles
- No threshold to the Village Hall entrance - vehicle dominated and unsafe for pedestrians
- Overhead high voltage power lines to the south of the site and low voltage power line over the Village Hall and car park
- Underground low voltage power lines in the western section of the site
- Village Hall has no visual connection or natural surveillance of the recreational ground
- Poor visibility of the site from the village
- No separation between the car park and recreational space
- Adjacent land with an application for residential development

## Site Opportunities



## Site Opportunities

- Create a safe vehicular entrance/exit away from the Walcot Rd/ Stonebow Rd junction where the existing maintenance access is located
- Extend the car park to allow for more car parking on site
- Provide a new dedicated pedestrian entrance adjacent to St Barnabas Church to create a clear and safe connection between the Church and Village Hall
- Provide a separate pedestrian entrance from Walcot Road to improve safe access and permeability to the open space
- Plant a new low hedgerow (up to 1.2m high) along Walcot Lane to increase visibility into the site
- Provide new active frontages on the southern and eastern façades of the Village Hall to increase connectivity with the recreational space
- Provide inspirational and imaginative play areas, set out in separate and sequential age groups - with the youngest age group closest to the Village Hall for ease of surveillance and use by the playgroup
- Provide a circular trim trail around the open space with incidental fitness equipment
- Bolster hedgerows and provide tussock grass margins to increase habitat diversity, visually soften the boundaries and enhance the rural aspect of the site