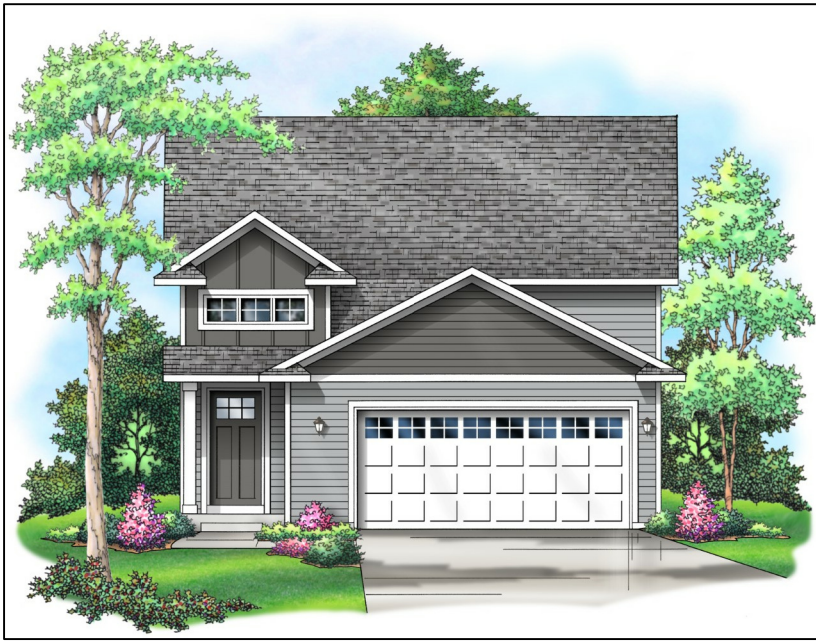


BLUFFTON

1850 MORNING GLORY DRIVE

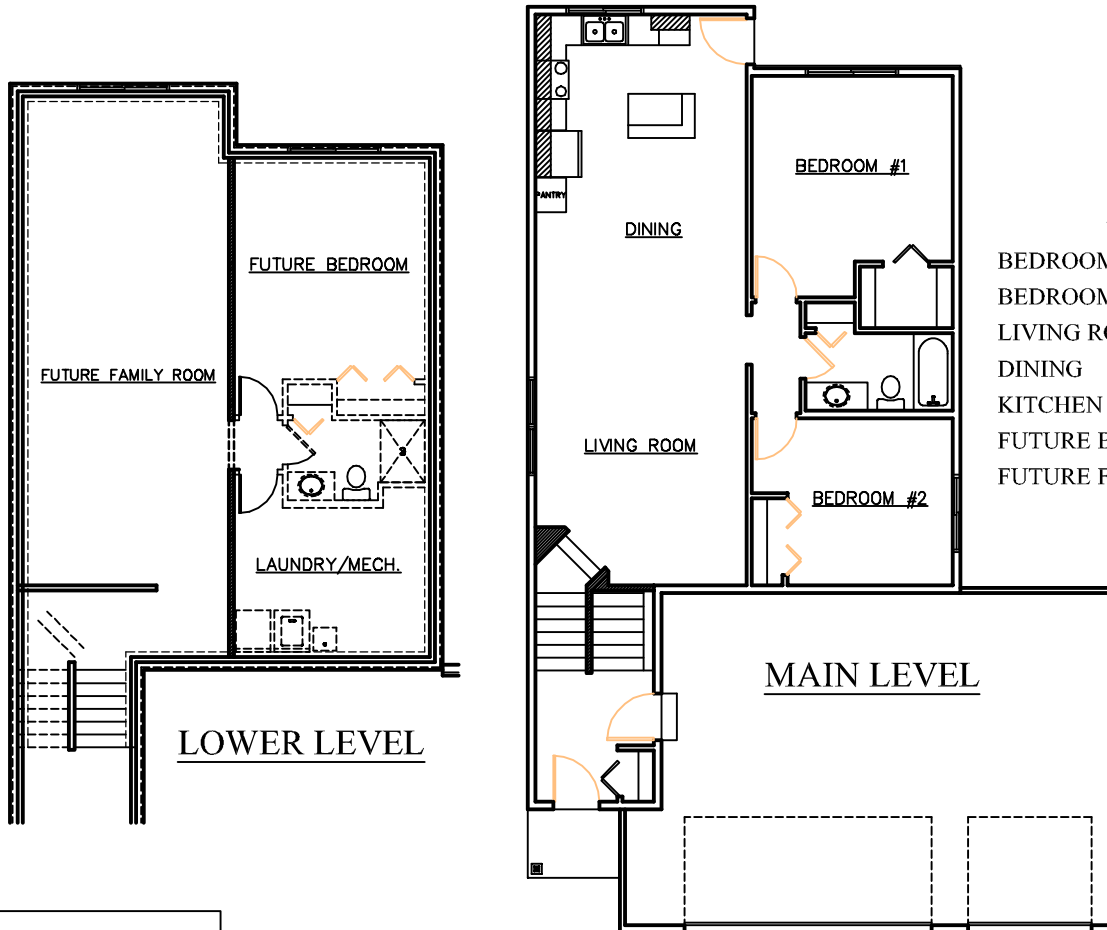


BASE PRICE: \$329,900

- * 2-3 BEDROOMS, 1-2 BATHS
- * 1,132 - 1,870 SQUARE FEET
- * 3-CAR GARAGE
- * OPEN FLOOR PLAN
- * VAULTED CEILINGS
- * WALK-IN-CLOSET
- * COVERED FRONT PORCH

SOME OPTIONS MAY BE SHOWN

3-CAR GARAGE NOT SHOWN



ROOM SIZES

BEDROOM #1	13' X 12'
BEDROOM #2	10'-8" X 10'-10"
LIVING ROOM	13'-8" X 18'-6"
DINING	13'-8" X 10'-6"
KITCHEN	13'-8" X 9'-6"
FUTURE BEDROOM #3	12'-4" X 14'
FUTURE FAMILY ROOM	13' X 35'-8"



3475 Vermillion Street, Suite 101 ~ Hastings, MN 55033 ~ 651.437.3700 ~ www.gregjhomes.com

Plans and specifications are subject to change without notice. Copyright Greg J Homes of Hastings Inc. 2021