

# Garland Independent School District

## High School Band Audition

Andante (♩ = c. 80)

*mp* *mf* *f* *p* *mp* *mf* *f* *p* *mp* *mf* *f* *p* *mp* *mf* *f*

Allegretto (♩ = c. 104)

*f* *p* *mp* *mf* *f* *p* *mp* *mf* *f* *p* *mp* *mf* *f* *p*

# Garland Independent School District

## High School Band Audition

Andante (♩ = c. 80)

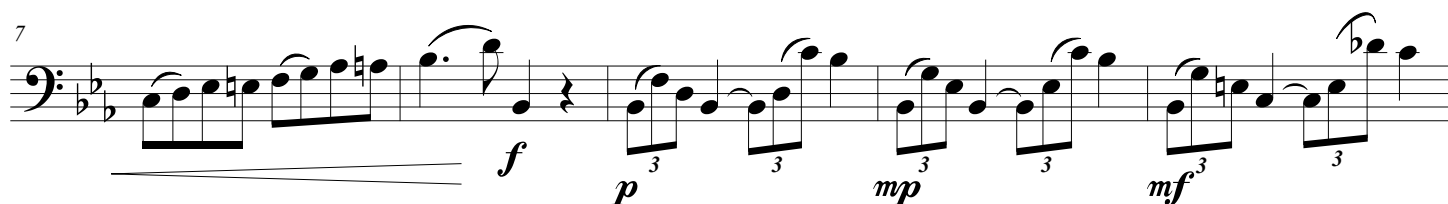
Musical score for Oboe, Andante section (measures 1-16). The key signature is B-flat major (two flats). The time signature is 4/4. The tempo is Andante (♩ = c. 80). The score includes dynamic markings: *mp* (measures 1-4), *mf* (measures 5-6), *f* (measures 7-8), *p* (measures 9-10), *mp* (measures 11-12), and *mf* (measures 13-16). The piece concludes with a 2/4 time signature change at the end of measure 16.

Musical score for Oboe, Allegretto section (measures 17-33). The key signature is B-flat major (two flats). The time signature is 2/4. The tempo is Allegretto (♩ = c. 104). The score includes dynamic markings: *f* (measures 17-20), *subito p* (measures 21-24), and *f* (measures 25-33). The piece concludes with a final measure at measure 33.

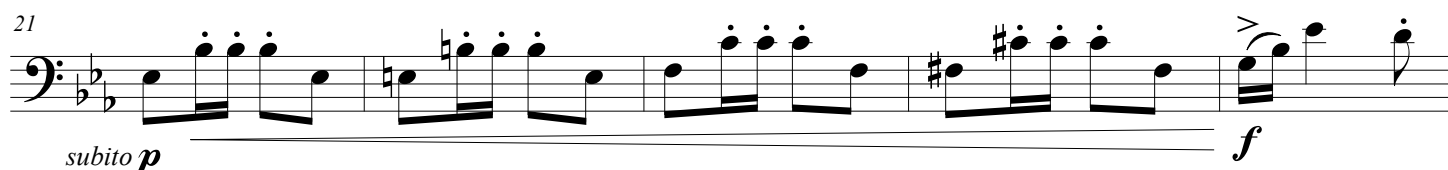
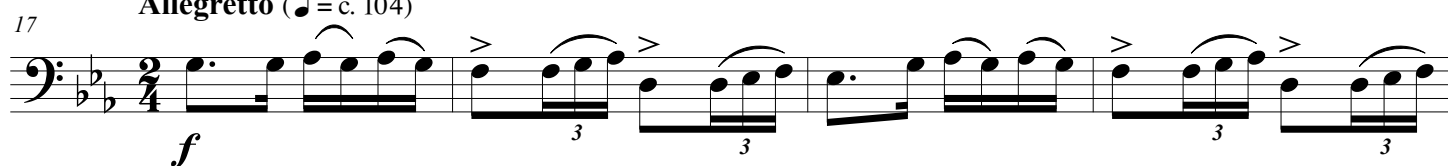
# Garland Independent School District

## High School Band Audition

Andante (♩ = c. 80)



Allegretto (♩ = c. 104)



# Garland Independent School District

## High School Band Audition

Andante ( $\text{♩} = \text{c. } 80$ )

7

*mp* *mf* *f* *p* *mp* *mf*

12

Allegretto ( $\text{♩} = \text{c. } 104$ )

17

*f* *subito p* *f*

21

26

30

# Garland Independent School District

## High School Band Audition

Andante (♩ = c. 80)

Musical score for Bass Clarinet, Andante section (measures 1-16). The tempo is marked Andante (♩ = c. 80). The key signature is one flat (B-flat). The time signature is 4/4. The score includes dynamic markings: *mp* (measures 1-4), *mf* (measures 5-6), *f* (measures 7-8), *p* (measures 9-10), *mp* (measures 11-12), and *mf* (measures 13-16). The piece concludes with a 2/4 time signature change at the end of measure 16.

Musical score for Bass Clarinet, Allegretto section (measures 17-32). The tempo is marked Allegretto (♩ = c. 104). The key signature is one flat (B-flat). The time signature is 2/4. The score includes dynamic markings: *f* (measures 17-20), *subito p* (measures 21-24), and *f* (measures 25-32). The piece concludes with a final measure at measure 32.

# Garland Independent School District

## High School Band Audition

Andante (♩ = c. 80)

Musical score for Alto Sax, Andante section (measures 1-16). The tempo is marked Andante (♩ = c. 80). The key signature has one flat (B-flat). The time signature is 4/4. The score includes dynamic markings: *mp* (measures 1-4), *mf* (measures 5-6), *f* (measures 7-8), *p* (measures 9-10), *mp* (measures 11-12), and *mf* (measures 13-16). There are also trills and triplets indicated.

Allegretto (♩ = c. 104)

Musical score for Alto Sax, Allegretto section (measures 17-32). The tempo is marked Allegretto (♩ = c. 104). The key signature has one flat (B-flat). The time signature is 2/4. The score includes dynamic markings: *f* (measures 17-18), *subito p* (measures 19-20), and *f* (measures 21-22). There are also trills and triplets indicated.

Tenor Sax

# Garland Independent School District

## High School Band Audition

Andante (♩ = c. 80)

Musical score for Tenor Sax, Andante section (measures 1-16). The tempo is marked Andante (♩ = c. 80). The key signature has one flat (B-flat). The time signature is 4/4. The score includes dynamic markings: *mp* (measures 1-4), *mf* (measures 5-6), *f* (measures 7-8), *p* (measures 9-10), *mp* (measures 11-12), and *mf* (measures 13-16). There are also trills and triplets indicated.

Allegretto (♩ = c. 104)

Musical score for Tenor Sax, Allegretto section (measures 17-34). The tempo is marked Allegretto (♩ = c. 104). The key signature has one flat (B-flat). The time signature is 2/4. The score includes dynamic markings: *f* (measures 17-18), *subito p* (measures 19-20), and *f* (measures 21-22). There are also trills and triplets indicated.

# Garland Independent School District

## High School Band Audition

Andante (♩ = c. 80)

Musical score for the Andante section (measures 1-16). The tempo is marked Andante (♩ = c. 80). The key signature has one flat (B-flat). The time signature is 4/4. The score includes dynamic markings: *mp* (measures 1-4), *mf* (measures 5-6), *f* (measures 7-8), *p* (measures 9-10), *mp* (measures 11-12), and *mf* (measures 13-16). The piece features various musical notations including eighth notes, quarter notes, half notes, and triplets.

Allegretto (♩ = c. 104)

Musical score for the Allegretto section (measures 17-33). The tempo is marked Allegretto (♩ = c. 104). The key signature has one flat (B-flat). The time signature is 2/4. The score includes dynamic markings: *f* (measures 17-18), *subito p* (measures 19-20), and *f* (measures 21-22). The piece features various musical notations including eighth notes, quarter notes, and triplets.



Trumpet in B $\flat$

# Garland Independent School District

## High School Band Audition

**Andante** ( $\text{♩} = \text{c. } 80$ )

Musical notation for the Andante section (measures 1-16). The key signature is one flat (B $\flat$ ), and the time signature is 4/4. The piece begins with a mezzo-piano (*mp*) dynamic, followed by a crescendo to mezzo-forte (*mf*) at measure 4. Measures 7-11 feature a decrescendo from *f* to *mf*, with triplets in measures 8, 9, 10, and 11. Measure 12 starts with a forte (*f*) dynamic and continues with eighth-note patterns.

Musical notation for the Allegretto section (measures 17-20). The key signature remains one flat (B $\flat$ ), and the time signature changes to 2/4. The tempo is marked Allegretto ( $\text{♩} = \text{c. } 104$ ). The section begins with a forte (*f*) dynamic and features triplet patterns in measures 17, 18, 19, and 20.

Musical notation for measures 21-25 of the Allegretto section. Measure 21 begins with a *subito p* (suddenly piano) dynamic. The section concludes with a crescendo leading to a forte (*f*) dynamic in measure 25.

Musical notation for measures 26-29 of the Allegretto section. The piece continues with eighth-note patterns and concludes with a half note in measure 29.

Musical notation for measures 30-34 of the audition piece. The key signature changes to two flats (B $\flat$  and E $\flat$ ), and the time signature returns to 4/4. The section features eighth-note patterns and concludes with a half note in measure 34.

Horn in F

# Garland Independent School District

## High School Band Audition

**Andante** (♩ = c. 80)

Musical score for the Andante section (♩ = c. 80). The key signature is one flat (Bb). The time signature is 4/4. The score consists of three staves of music. The first staff begins with a mezzo-piano (*mp*) dynamic and a crescendo leading to a mezzo-forte (*mf*) dynamic. The second staff starts with a forte (*f*) dynamic, followed by a piano (*p*) dynamic, then mezzo-piano (*mp*), and mezzo-forte (*mf*). The third staff begins with a forte (*f*) dynamic and ends with a 2/4 time signature change.

Musical score for the Allegretto section (♩ = c. 104). The key signature is one flat (Bb). The time signature is 2/4. The score consists of three staves of music. The first staff begins with a forte (*f*) dynamic. The second staff starts with a subito piano (*subito p*) dynamic, followed by a crescendo leading to a forte (*f*) dynamic. The third staff continues the music with various dynamics and articulations.

# Garland Independent School District

## High School Band Audition

Andante (♩ = c. 80)

Musical score for Trombone, Andante section (measures 1-16). The key signature is B-flat major (two flats). The time signature is 4/4. The score includes dynamic markings: *mp* (measures 1-4), *mf* (measures 5-6), *f* (measures 7-8), *p* (measures 9-10), *mp* (measures 11-12), and *mf* (measures 13-16). There are also trills in measures 10 and 12.

Allegretto (♩ = c. 104)

Musical score for Trombone, Allegretto section (measures 17-30). The key signature is B-flat major (two flats). The time signature is 2/4. The score includes dynamic markings: *f* (measures 17-20), *subito p* (measures 21-24), and *f* (measures 25-30). There are also trills in measures 18, 19, 22, 23, and 26.

# Garland Independent School District

## High School Band Audition

Andante (♩ = c. 80)

Andante section (measures 1-16). The music is in bass clef, key of B-flat major (two flats), and 4/4 time. It begins with a mezzo-piano (*mp*) dynamic and a crescendo leading to a mezzo-forte (*mf*) dynamic. The melody features eighth and sixteenth notes, with a fermata over the eighth measure. Measures 7-11 include triplets and a fortissimo (*f*) dynamic. Measure 12 ends with a 2/4 time signature change.

Allegretto (♩ = c. 104)

Allegretto section (measures 17-30). The music is in bass clef, key of B-flat major (two flats), and 2/4 time. It begins with a fortissimo (*f*) dynamic and features eighth-note patterns with accents and triplets. Measure 21 includes a subito piano (*p*) dynamic change, followed by a crescendo back to fortissimo (*f*). The section concludes with a final cadence in measure 30.

## Tuba

# Garland Independent School District

## High School Band Audition

Andante (♩ = c. 80)

Musical score for Tuba, Andante section (measures 1-16). The key signature is B-flat major (two flats). The time signature is 4/4. The score includes dynamic markings: *mp* (measures 1-4), *mf* (measures 5-6), *f* (measure 7), *p* (measure 8), *mp* (measures 9-10), and *mf* (measures 11-12). There are crescendo and decrescendo hairpins. Trills are marked with a '3' above the notes. The section ends with a 2/4 time signature change.

Allegretto (♩ = c. 104)

Musical score for Tuba, Allegretto section (measures 17-30). The key signature is B-flat major (two flats). The time signature is 2/4. The score includes dynamic markings: *f* (measures 17-18), *subito p* (measures 19-20), and *f* (measures 21-22). There are crescendo and decrescendo hairpins. Trills are marked with a '3' above the notes. The section ends with a final measure.

## Mallets

# Garland Independent School District

## High School Percussion Audition Music

**Andantino** ♩ = 86

Musical score for "The Swan" by Camille Saint-Saëns, featuring a single melodic line on a treble clef staff. The score is in B-flat major, 4/4 time, and consists of 32 measures. It includes dynamic markings (*mf*, *p*, *f*), articulation (accents), and phrasing slurs. The tempo is marked as quarter note = 100. The key signature has two flats (B-flat and E-flat). The time signature changes from 4/4 to 2/4 at measure 13.

# Garland Independent School District

## High School Percussion Audition Music

**Andantino** ♩ = 86

