

Buckingham[®] Collection

Collection Overview

Buckingham® Collection Updates for 2020

Buckingham® Collection Updates for 2020

- Nine new finial styles available in all three sizes; 1 3/8", 2" & 3"
- Six new finishes
- New, Transitional Bracket design available in all three sizes
- New, Transitional Ring design available in all three sizes
- Four new holdback styles
- Estate™ Traverse Rods now available in 1 3/8" size
- New Buckingham Portfolio with all 15 finishes.
- New Buckingham Brochure to highlight additions to the collection.



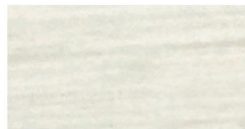
Camden



Castle Rock



Distressed Oak



Moonglow



Sterling



Winterwood

Buckingham® Collection Overview

Buckingham® Collection



R E D E F I N I N G

Luxury

The Buckingham Collection is a celebration of the finest traditions in American hand crafting.

Each piece begins as an exquisite, hand-cut jewel, and then is expertly cast from its original master carving.

Artists then brush, burnish and distress each piece by hand with meticulous attention to detail. Making each beautiful Kirsch finish a one of a kind treasure.

The Buckingham Collection references the distinguished styles from the classic Victorian and the elegant Renaissance architecture's offering.

Custom program ships in 7-10 business days.

\$100 Three Day Production Rush Now Available

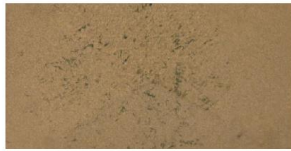
Buckingham® Collection

- Great for Stationary Draperies & Traversing Draperies
 - Rod Pocket
 - Tab Top
 - Tie Top
 - Grommet
 - Pleated
 - Ripplefold™



Buckingham® Collection

- Fifteen hand crafted finishes. Six new finishes in 2020.



Aged Gold



Black Gold



Camden



Castle Rock



Cottage White



Dark Walnut



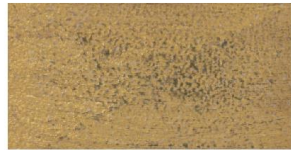
Distressed Oak



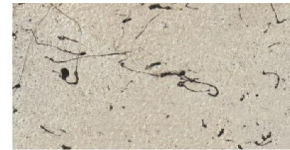
Moonglow



Old World White



Ornate



Shimmer



Slate



Sterling



Venetian



Winterwood

Buckingham® Collection

- Twenty-five 1 3/8" & 2" finials and endcap styles with twenty-one 3" finial & endcap styles. Nine new styles in 2020.



Aston in Moonglow & Stamford in
Distressed Oak

Carrington in Aged Gold



Buckingham® Collection



Davenport in Camden & Hamilton in Slate



Harper in
Sterling



Larkin in
Cottage
White

Buckingham® Collection



Twisted Ball in Distressed Oak, Concord in Venetian, Wood Ball in Castle Rock & Oxford in Sterling

Buckingham® Collection



Leaf Dance in Slate



Regal in Winterwood & Empress in Distressed Oak

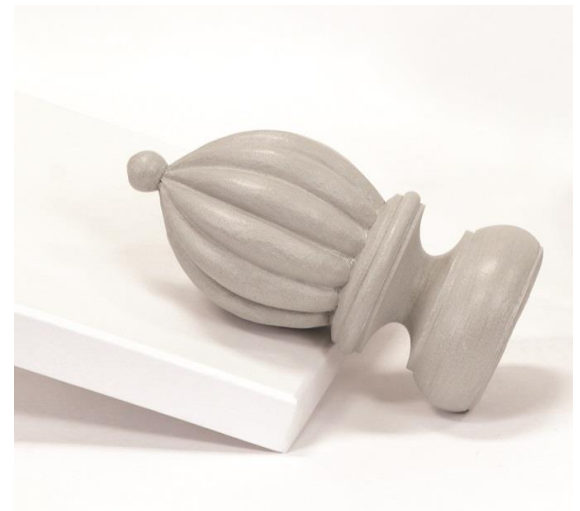
Buckingham® Collection



Icarus in Castle Rock & Wave in Winterwood



Onion Dome in Distressed Oak



Berkshire in Winterwood

Buckingham® Collection



Windsor in Slate, Cross Geometric in Camden & Pineacanthus in Winterwood

Buckingham® Collection

Cross Geometric Endcap in Camden, Leaf Endcap
in Sterling, Fluted Endcap in Cottage White & Rope
Endcap in Winterwood



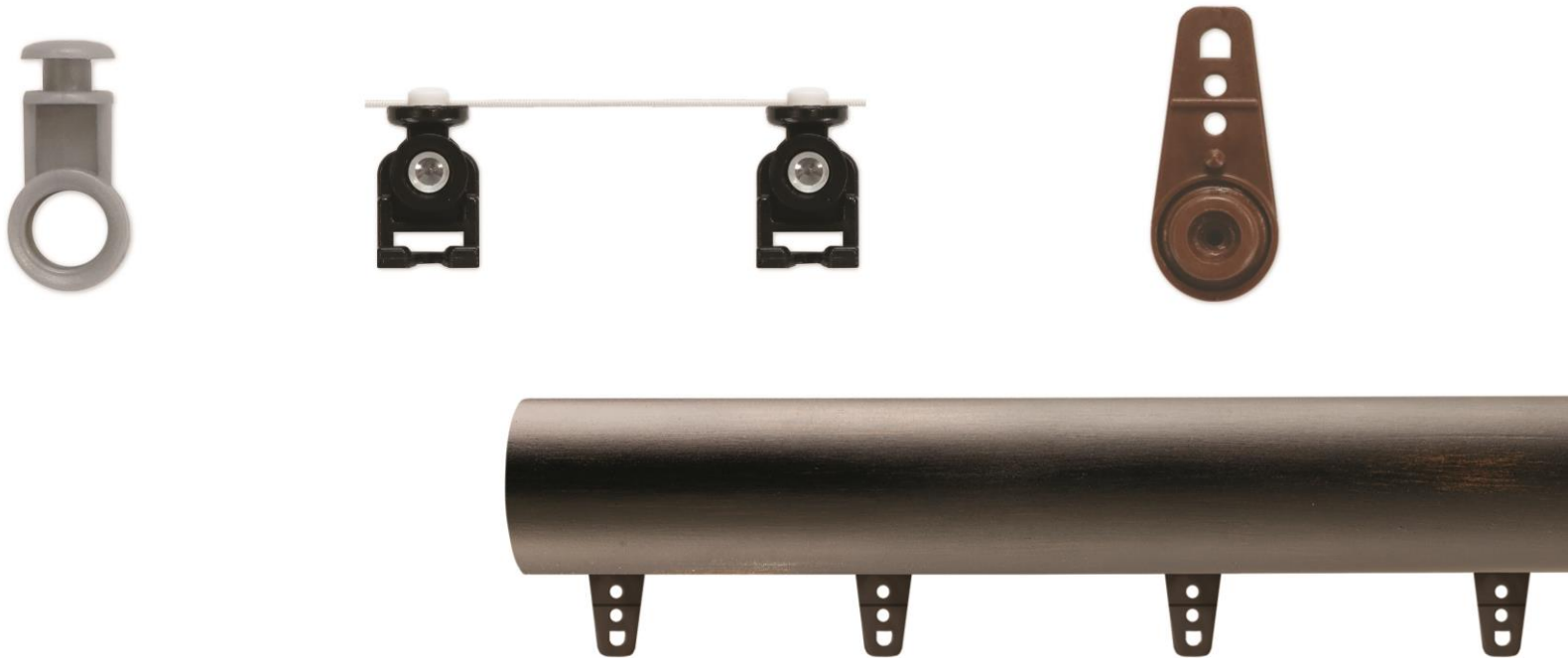
Buckingham® Collection

- Estate™ Traverse Rods
 - Available diameters 1 3/8", which is new for 2020 & 2"
 - Heavy duty weight bearing track
 - Custom lengths to the nearest 1/8"
 - Cord, Hand/ Baton or Briza™ Motorization Operating Methods
 - Three configuration choices
 - Pleated with rings (2" diameter only)
 - Pleated
 - 16mm ball bearing carriers/ slides with three holes for easy pin adjustment and color coordinated
 - Ripplefold™
 - Two sided color coordinated pendants and color coordinated carriers



Buckingham® Collection

- All Estate Traverse rods use color coordinating components to allow for a more design friendly application.
 - Cords, tension devices, carriers and track are all color coordinated.



Buckingham® Collection



- Three stationary pole diameters
 - 1 3/8", 2" and 3" Smooth
 - 2" Fluted
 - Allows for versatility to fit any size window no matter the scale of the room
 - Multiple pole diameters allow for finish consistency between large & small windows
 - All pole diameters are available in all finishes
- Four stationary pole lengths
 - 4 ft, 6 ft, 8 ft and 12 ft
 - Poles can be cut down with fine tooth saw or spliced using pole connector (item # 5610E061)

Buckingham® Collection

- Stationary Pole Brackets
 - New Transitional Bracket added in 2020
 - Available in all three sizes
 - 1 3/8" Brackets
 - 3 1/2" or 6" Returns
 - 2" Brackets
 - 3 1/2" or 6" Returns
 - Decorative Rope 3 5/8" Return
 - Decorative Leaf 4 1/2" Return
 - 3" Brackets
 - 4 1/2" or 6" Returns



Buckingham® Collection

- Stationary Pole Brackets
 - New Transitional Bracket added in 2020
 - Available in all three sizes
 - 1 3/8" Brackets
 - 3 1/2" or 6" Returns
 - 2" Brackets
 - 3 1/2" or 6" Returns
 - Decorative Rope 3 5/8" Return
 - Decorative Leaf 4 1/2" Return
 - 3" Brackets
 - 4 1/2" or 6" Returns



Buckingham® Collection

- Stationary Pole Accessories
 - New Transitional Ring design added in 2020
 - Rings
 - Decorative, Fluted or Smooth
 - Scarf Ring



Buckingham® Collection

- Nine Decorative Holdbacks. Four new styles in 2020.



Benson in Distressed Oak, Larkin in Camden, Harper in Venetian, Cross Geometric in Aged Gold, Open Leaf in Winterwood, Flourish in Moonglow, Davenport in Slate, Empress in Aged Gold & Rope in Dark Walnut

Buckingham® Collection

- Four Decorative Scarfholders

Leaf Scroll in Dark Walnut,
Decorative Rope in Sterling,
Scroll in Moonglow &
Traditional in Distressed Oak



Buckingham® Collection

- Swivel Socket
 - Available for use with 1 3/8" & 2" diameter poles





@kirsch

Experience more, visit kirsch.com