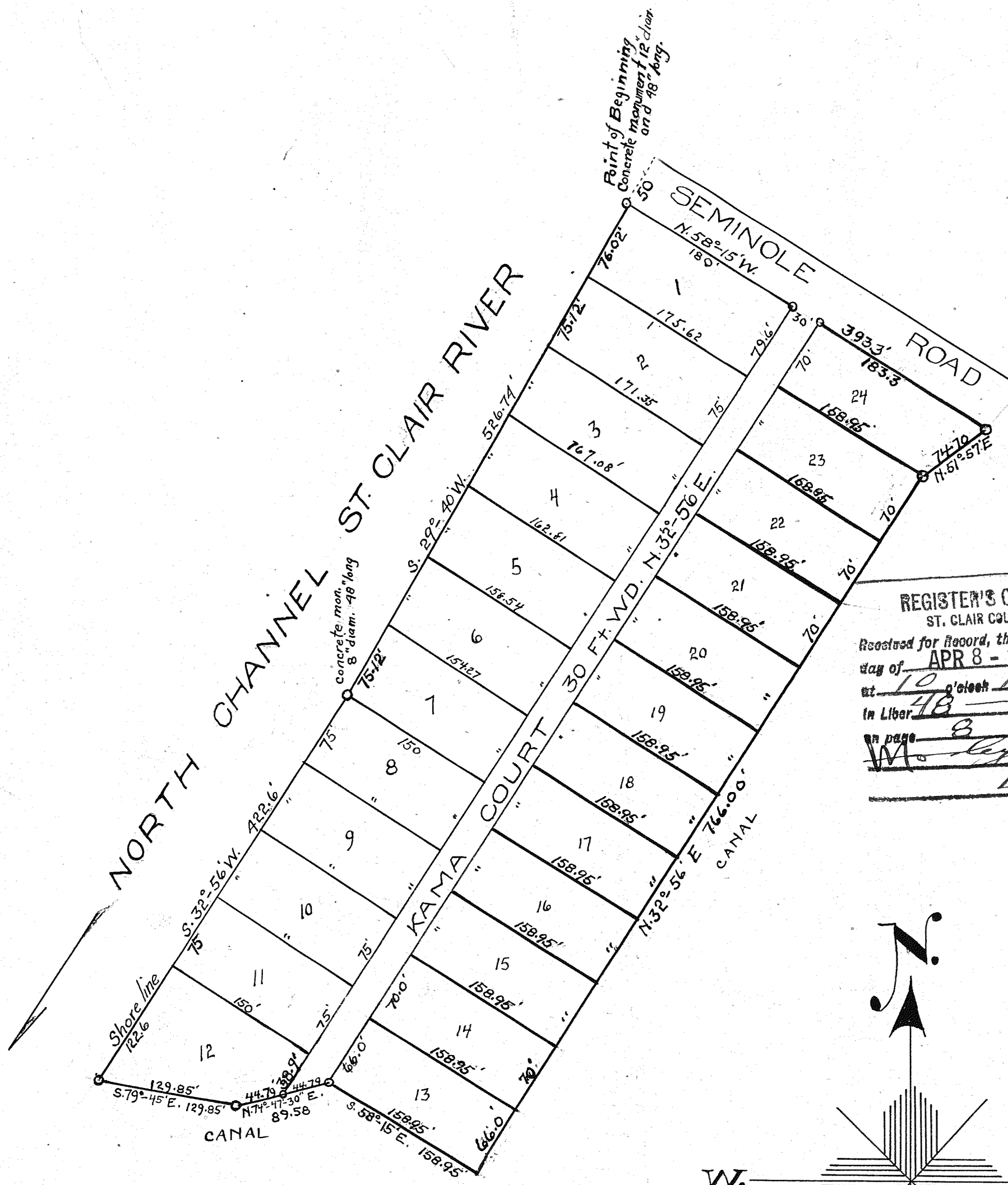


"NORTH CHANNEL SHORES PLAT" OF RUSSELL ISLAND, CLAY TOWNSHIP ST. CLAIR COUNTY MICHIGAN.

LIBER. 48 OF PLATS, PAGE 8

April 7, 1927 W. L. Carpenter



REGISTER'S OFFICE, ST. CLAIR COUNTY. Recorded for Record, the day of APR 8 - 1927 A. D. 19 at 10 o'clock A. M. and recorded in Liber 48 of PLATS on page 8 W. L. Carpenter Registar.

DEDICATION.

KNOW ALL MEN BY THESE PRESENTS: That we the "RUSSELL Island Company" a Michigan Corporation by Wm. L. Carpenter as president and JOHN H. BROOKE Secretary as Proprietor have caused the land embraced in the annexed plat to be surveyed, laid out and platted to be known as "NORTH CHANNEL SHORES PLAT" of Russell Island, Clay Township St. Clair County Michigan and that the street shown on said plat is dedicated to the use of the public.

Signed and sealed in presence of: Wm. L. Carpenter Pres. Russell Island Co. D. G. Kimble Sec.

STATE OF MICHIGAN County of WAYNE

On this 21st day of JUNE AD. 1926 before me a Notary Public in and for said County appeared WILLIAM L. CARPENTER and JOHN H. BROOKE by me personally known and who being each by me duly sworn did say that they are the President and Secretary respectively of the Russell Island Company a Michigan Corporation of Detroit Mich. and that the seal affixed to said instrument is the corporate seal of said Corporation and that said instrument was signed and sealed in behalf of said Corporation by authority of its Board of Directors and the said WILLIAM L. CARPENTER and JOHN H. BROOKE acknowledged the same to be the free act and deed of said corporation. My commission expires DEC. 4, 1928.

Beatrice G. Kimble Notary Public, Wayne Co. Mich.

CERTIFICATE OF APPROVAL BY THE TOWNSHIP BOARD This plat was approved by the Township Board of Clay Township St. Clair County Michigan at a meeting held this 6th day of JULY 1926

D. A. Pentecost Clerk

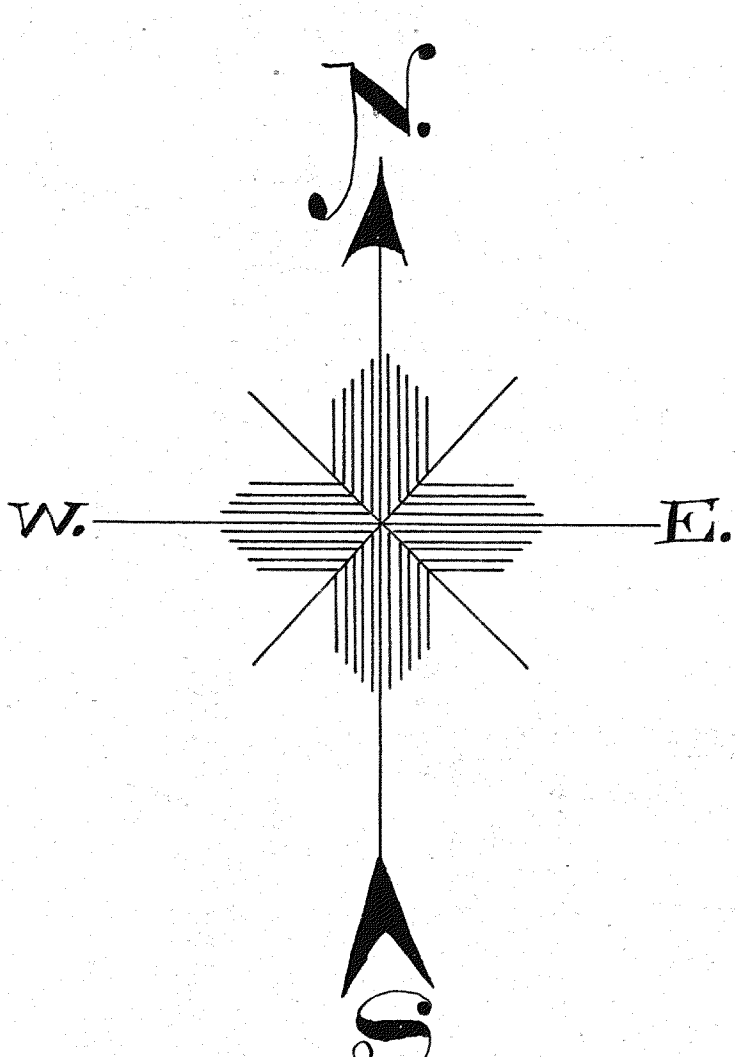
CERTIFICATE OF APPROVAL BY THE BOARD OF COUNTY AUDITORS. Approved by the Board of County Auditors of St. Clair County Michigan at a meeting held this 11th day of APRIL 1926

William C. Johnson Chairman, Charles H. Zimmerman

SURVEYOR'S CERTIFICATE

I hereby certify that the plat herein delineated is a correct one and that permanent monuments consisting of iron pipe of not less than one inch in diameter and fifteen inches in length set in a concrete base at least four inches in diameter and four eight inches in length have been placed at all points marked "M" as herein shown at all angles in the boundaries of the land platted, at all intersections of streets, intersections of alleys, or of streets and alleys and at all intersections of streets and alleys with the boundaries of the plat.

Emory S. Leichter Registered Surveyor



Scale: one inch = one hundred ft.

Note: All dimensions are given in feet and decimals thereof.

DESCRIPTION OF PLAT

From a concrete monument 12" in diameter and 48" long at the intersection of the southerly line of "Seminole Road" and the easterly shore of the North Channel of the St. Clair River, at Russell Island, Clay Tp. St. Clair County Mich., thence S. 29° 40' W. along shore of said River 526.74 feet; thence S. 32° 56' W. 422.6 feet; thence S. 79° 45' E. 129.85 feet; thence N. 74° 47' 30" E. 89.58 feet; thence S. 58° 15' E. 158.95 feet; thence N. 32° 56' E. 766.00 feet; thence N. 51° 57' E. 74.10 feet to southerly line of Seminole Road; thence N. 58° 15' W. 393.3 feet to the point of beginning.

ST. CLAIR COUNTY, TREASURER'S OFFICE AUG 23 1926

Port Huron, Mich., 1926 I hereby certify that there are no tax liens or titles held by the state or individuals on the lands described in the within instrument and that all taxes which by law are required to be returned to this office, have been fully paid for the five years preceding the date of said instrument as shown by the records of this office.

Robert P. Anderson County Treasurer