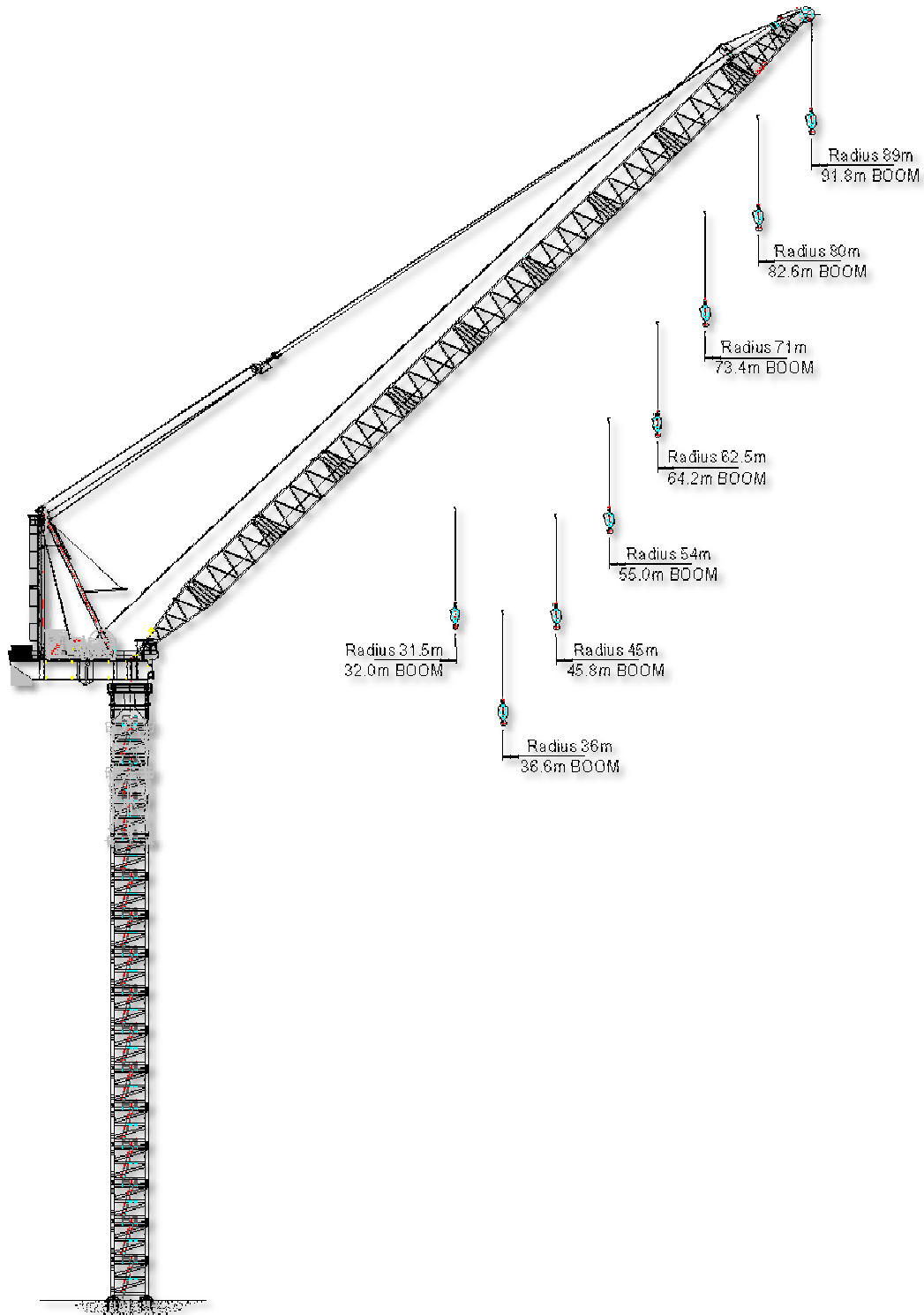




# M1680DX HEAVY DUTY TOWER CRANE



**M1680DX RADIUS AND CAPACITY**



Boom Length	Min Radius	SWL at Min Radius	Radius (meters) & Capacity (tonnes)																SWL at Max Radius	Max Radius	
			50 Tonne Winch - 1 Fall Hook																		
(m)	(m)	(T)	10 (m)	15 (m)	20 (m)	25 (m)	30 (m)	35 (m)	40 (m)	45 (m)	50 (m)	55 (m)	60 (m)	65 (m)	70 (m)	75 (m)	80 (m)	85 (m)	(T)	(m)	
91.8	8.9	50.0	50.0	50.0	47.0	42.6	38.6	34.9	31.5	28.2	25.1	22.0	19.1	16.5	13.9	11.5	9.0	6.5	4.3	89.0	
87.2	8.5	50.0	50.0	50.0	50.0	49.7	45.3	41.1	37.2	33.7	30.2	26.9	23.9	20.9	18.1	15.3	12.4	9.1	9.1	85.0	
82.6	8.2	50.0	50.0	50.0	50.0	50.0	50.0	47.6	43.5	39.7	35.9	33.0	29.0	25.8	22.6	20.0	16.0		16.0	80.0	
78.0	7.8	50.0	50.0	50.0	50.0	50.0	50.0	50.0	50.0	45.9	41.8	38.0	34.3	30.7	26.9	22.6			22.6	75.0	
73.4	7.4	50.0	50.0	50.0	50.0	50.0	50.0	50.0	50.0	50.0	48.0	42.2	37.0	32.5	28.5					28.0	71.0
68.8	7.1	50.0	50.0	50.0	50.0	50.0	50.0	50.0	50.0	50.0	50.0	49.0	42.8	37.5	33.0					31.5	67.0
64.2	6.7	50.0	50.0	50.0	50.0	50.0	50.0	50.0	50.0	50.0	50.0	50.0	43.0	38.0						36.0	62.5
55.0	6.0	50.0	50.0	50.0	50.0	50.0	50.0	50.0	50.0	50.0	50.0	50.0								46.0	54.0
45.8	5.3	50.0	50.0	50.0	50.0	50.0	50.0	50.0	50.0	50.0	50.0									50.0	45.0
36.6	4.6	50.0	50.0	50.0	50.0	50.0	50.0	50.0												50.0	36.0
32.0	4.2	50.0	50.0	50.0	50.0	50.0	50.0													50.0	31.5

Boom Length	Min Radius	SWL at Min Radius	Radius (meters) & Capacity (tonnes)																SWL at Max Radius	Max Radius	
			50 Tonne Winch - 2 Falls Hook																		
(m)	(m)	(T)	10 (m)	15 (m)	20 (m)	25 (m)	30 (m)	35 (m)	40 (m)	45 (m)	50 (m)	55 (m)	60 (m)	65 (m)	70 (m)	75 (m)	80 (m)	85 (m)	(T)	(m)	
91.8	8.9	55.0	54.5	52.0	49.5	46.7	42.9	38.4	34.2	30.0	26.2	22.5	19.0	15.8	12.8	9.9	7.1	4.3	1.8	89.0	
87.2	8.5	66.1	65.2	61.9	58.6	55.3	51.6	46.3	41.5	37.0	32.8	28.7	24.9	21.3	17.9	14.5	11.2	7.4	7.4	85.0	
82.6	8.2	74.9	74.0	71.1	68.2	65.0	60.6	54.8	49.6	44.7	40.0	35.5	31.2	26.8	23.0	19.0				14.9	80.0
78.0	7.8	86.5	85.3	82.4	79.5	75.5	70.0	63.9	57.9	50.5	43.5	37.3	32.0	27.5	23.8					20.5	75.0
73.4	7.4	99.6	98.1	94.8	91.5	87.0	80.3	72.4	61.0	52.0	44.5	38.3	33.0	29.0	25.0					24.3	71.0
68.8	7.1	100.0	100.0	100.0	100.0	98.5	89.0	73.5	61.5	52.5	45.5	39.0	34.0	29.5						28.0	67.0
64.2	6.7	100.0	100.0	100.0	100.0	100.0	90.5	75.0	63.0	54.0	47.0	41.0	36.0							33.5	62.5
55.0	6.0	100.0	100.0	100.0	100.0	100.0	91.5	76.0	64.5	55.5	48.5									43.5	54.0
45.8	5.3	100.0	100.0	100.0	100.0	100.0	93.0	77.5	66.0											57.0	45.0
36.6	4.6	100.0	100.0	100.0	100.0	100.0	94.0	78.5												76.0	36.0
32.0	4.2	100.0	100.0	100.0	100.0	100.0	94.5													89.0	31.5

Boom Length	Min Radius	SWL at Min Radius	Radius (meters) & Capacity (tonnes)																SWL at Max Radius	Max Radius	
			50 Tonne Winch - 4 Falls Hook																		
(m)	(m)	(T)	10 (m)	15 (m)	20 (m)	25 (m)	30 (m)	35 (m)	40 (m)	45 (m)	50 (m)	55 (m)	60 (m)	65 (m)	70 (m)	75 (m)	80 (m)	85 (m)	(T)	(m)	
78.0	7.8	85.0	84.0	81.5	79.0	76.5	73.0	66.5	55.0	45.5	38.0	32.0	27.0	22.6	19.0	16.5				16.5	75.0
73.4	7.4	100.3	98.8	95.8	92.8	89.8	82.5	67.5	56.0	47.0	39.5	33.0	28.0	24.0	20.5					20.0	71.0
68.8	7.1	116.4	114.4	111.0	107.5	100.0	84.0	68.5	57.0	48.0	40.5	34.0	29.0	25.0						23.7	67.0
64.2	6.7	141.1	136.0	128.0	120.0	106.5	86.0	70.0	58.0	49.0	41.5	35.5	30.5							28.5	62.5
55.0	6.0	182.6	177.2	165.0	142.0	109.5	88.0	72.5	61.0	51.9	44.8									40.4	54.0
45.8	5.3	200.0	200.0	200.0	144.0	111.0	89.5	74.0	62.5											54.0	45.0
36.6	4.6	200.0	200.0	200.0	200.0	145.0	112.5	90.5												75.0	36.0
32.0	4.2	200.0	200.0	200.0	145.5	113.0	91.5													86.5	31.5