

TILT SWITCH SHUTOFF BAR ASSEMBLY

Models Q10000 & Q12000
(for 3 Phase or 50 Hz Motor Wiring)

IMPORTANT: *Switch Tube MUST be mounted to REAR of Lift.*

1. Locate the rear mounting hole in each of the column extensions and verify that they are 117" apart as indicated in the figure below. If not, drill a 5/16" diameter hole through the Idler side column extension to be 117" from Power side column extension hole (Model Q10000 should not require drilling. Model Q12000 will require drilling a new hole 1 1/2" inward from existing hole.)
2. Attach the Switch Tube to the column using the 3/8" dia. x 1 1/2" lg. shoulder bolt and 5/16 -18 keps nut. The switch cord should be above the pivot hole as shown in the **Switch Tube Detail, Fig 1.**
3. Route the switch cord wire with the hydraulic hose using cable ties. Make certain there is no interference with synchronizing cables, cable pulleys, or hydraulic cylinder at full rise.
4. Take the shut-off bar to the Idler column and first insert the end of the bar into the open end of the switch tube, then attach the pivoting end to the Idler side column extension using the 3/8" dia. x 1 1/2" lg shoulder bolt and 5/16-18 keps nut. Raise and lower shut-off bar to ensure switch tube assembly rotates freely.
5. Connect the Overhead Limit Switch Cord to Power Unit as shown in **Fig 2.**
6. Connect Power Unit to suitable electrical source as shown in **Fig 2.**

IMPORTANT: *After wiring has been completed, test operation of Power Unit & Overhead Limit switch. While raising lift, operate Overhead Shutoff Bar. Power Unit Motor should stop when Shutoff Bar is raised.*

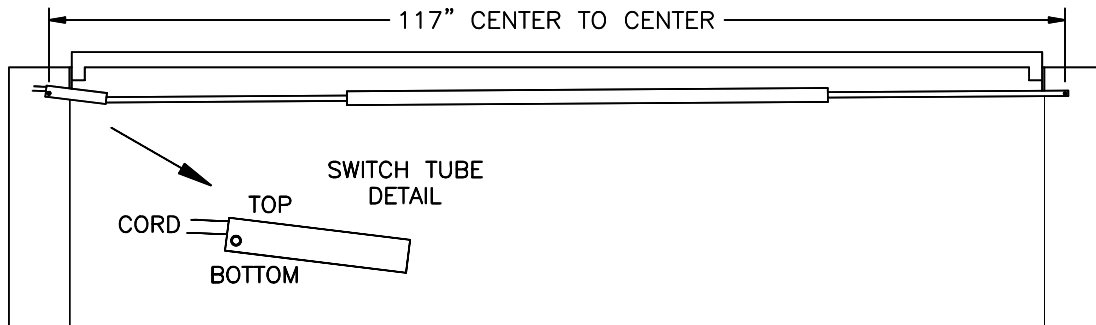


Fig. 1 Switch Mounting

Tilt Switch Shutoff Bar Assembly Parts List

Qty	P/N	Description
1	12045	Tilt Switch/Tube Assembly
1	12542	Shutoff Bar Assembly
2	36065	3/8 x 1 1/2 Shoulder Bolt
2	70081	5/16-18 Keps Nut
1 (3 phase ONLY)	31357	Contactor Package - 208V
	31358	Contactor Package - 220-240V
	31359	Contactor Package - 440-480V

Wiring Diagram

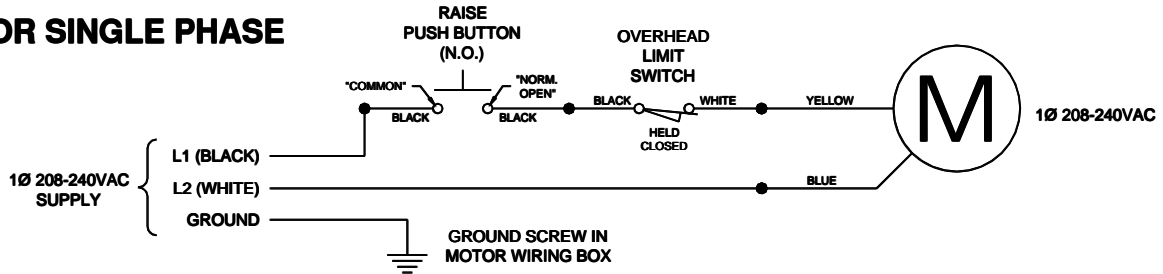
*** After wiring has been completed, test operation of Power Unit & Overhead Limit Switch. While raising lift, operate Overhead Shutoff Bar. Power Unit Motor should stop when Shutoff Bar is raised.**

EACH LIFT SHOULD HAVE A DEDICATED CIRCUIT WITH A DOUBLE POLE (THREE POLE FOR 440-480V) BREAKER OR TIME DELAY FUSE SIZED ACCORDING TO THE FOLLOWING CHART

	1Ø 208-240V	3Ø 208V	3Ø 220-240V	3Ø 440-480V
2Hp	25amp	15amp	15amp	5amp

* WIRING MUST COMPLY WITH NEC AND ALL LOCAL ELECTRICAL CODES *

FOR SINGLE PHASE



FOR THREE PHASE

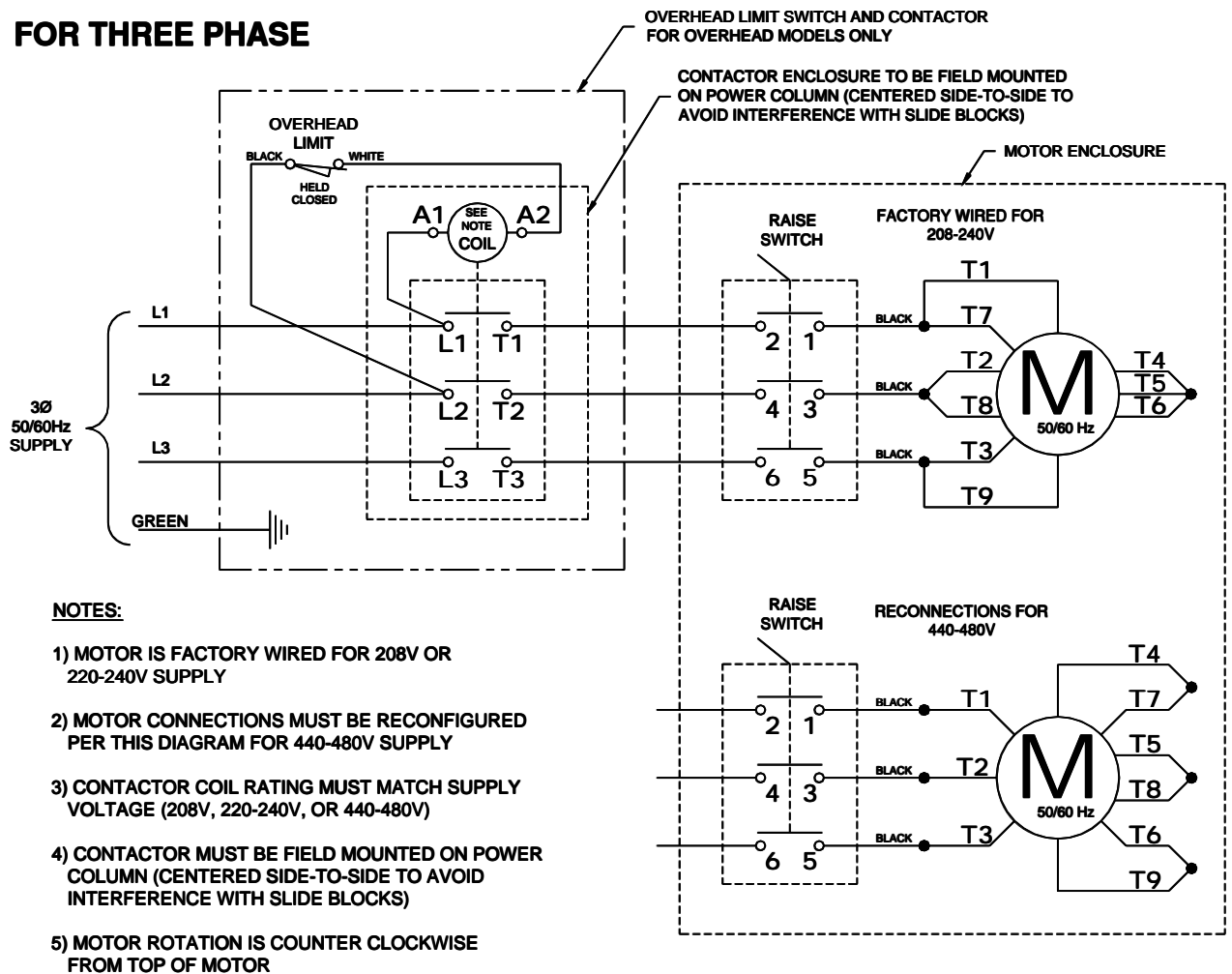


Fig. 2 Wiring Diagram