



6349 Del Cerro Blvd. San Diego, CA 92121



Registration & Certifications

California Licensed Architect C-31240

CPCA Architects founded

2013

Years of experience in the Architecture Industry

18

OSHPD experience

7

Education

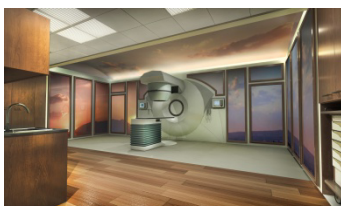
Bachelor of Architecture, 1999
(Cum Laude)

California Polytechnic State University
San Luis Obispo

International Exchange, 1997-98
University of Queensland
Brisbane, Australia

Professional Affiliations

American Institute of Architects (AIA)
ACE Mentor, 2007
(USAT) – All American Status



JEAN-CLAUDE CONSTANDSE – PRINCIPAL

Jean-Claude Constandse is the Business Development & Marketing Principal and founding partner of CPCArchitects office located in San Diego, California. Jean-Claude is responsible for establishing, maintaining and improving client relationships. He has developed a wide range of multidisciplinary skills throughout his experience as a licensed Architect with nbj, LPA and The Austin Company.

Mr. Jean-Claude Constandse's experience in the Healthcare, Science, Higher Education and Corporate Commercial sectors enables him to service new arenas previously unexplored.

Jean-Claude is fluent in English and Spanish and his ability to communicate clearly with all members of a project team enables him to guide projects through to successful completion.

Mr. Constandse's skill set includes Business Development, Marketing, Sales, Space Plan, Design, Construction Administration, Management, Coordination, and Furniture. He is a natural collaborator, bringing great energy to the development of ideas and processes which enable clients to realize their goals. He is experienced in all phases of the design and delivery of complex projects, and is especially valuable to the team during the construction phase of a project.

Relevant Project Experience

HEALTHCARE

Sharp & Children's MRI Corporation- Tenant Improvement

San Diego, CA

CPCA Architects, Design Principal & Project Architect, January 2017

- \$1,300,000 Construction Cost, 2,656 SF.
- Programming through completion
- Design-Build delivery method with DPR Construction

Rady Children's Hospital San Diego – MOB Suite 112 Tenant Improvements

San Diego, CA

CPCA Architects, Design Principal & Project Architect, January 2017

- 2,863 SF.
- Design Development through completion
- Design-Build delivery method with Align Builders

Sharp Coronado- Radiology Room #2 RSA Equipment Relocation

Coronado, CA

CPCA Architects, Design Principal & Project Architect, October 2015

- \$60,000 Construction Cost, 350 SF.
- Design Development through completion
- Design-Build delivery method with Pacific Building Group

Audibel - Hearing Center

Rancho Bernardo, CA

CPCA Architects, Design Principal & Project Architect, September 2014

- \$97,000 Construction Cost, 1,110 SF.
- Design Development through completion
- Design-Build delivery method with White Construction

CORPORATE COMMERCIAL

Cobham – Master Planning and Tenant Improvements

San Diego, CA

CPCA Architects, Design Principal & Project Manager, Present

- \$15,000,000 Construction Cost, 120,000 SF.
- Programming through completion



- Design-Build delivery method with DPR Construction

Perfect Pineapple

San Diego, CA

CPCArchitects, Design Principal & Project Architect, March 2017

- \$87,124 Construction Cost, 814 SF.
- Schematic Design through completion
- Design-Bid-Build delivery method with White Construction

Celgene – Tenant Improvements

San Diego, CA

CPCArchitects, Design Principal & Project Architect, December 2016

- 1,160 SF.
- Schematic Design through completion
- Design-Build delivery method with Pacific Building Group

American Specialty Health – Tenant Improvements

San Diego, CA

CPCArchitects, Design Principal & Project Architect, November 2016

- 4,782 SF.
- Schematic Design through completion
- Design-Build delivery method with Kavanagh Building Group

Trimco Hardware – Oceanside Office

Oceanside, CA

CPCArchitects, Design Principal & Project Architect, July 2016

- \$781,227 Construction Cost, 5,500 SF.
- Schematic Design through completion
- Design-Build delivery method with White Construction

Westfield – Leasing Trailer

University Town Center, CA

CPCArchitects, Design Principal & Project Architect, May 2016

- \$236,390 Construction Cost, 1,425 SF.
- Design Development through completion
- Design-Bid-Build with White Construction

JBM Properties – Party Room

La Jolla, CA

CPCArchitects, Design Principal & Project Architect, September 2015

- 630 SF.
- Design Development through completion
- Design-Bid-Build with DPR Construction

Title Nine – Pacific Highlands Ranch Store

San Diego, CA

CPCArchitects, Design Principal & Project Architect, September 2015

- \$114,867 Construction Cost, 1,655 SF.
- Design Development through completion
- Design-Build delivery method with White Construction

Total Vision Care – Advanced Optometry

San Diego, CA

CPCArchitects, Design Principal & Project Architect, September 2015

- \$158,800 Construction Cost, 1,686 SF.
- Design Development through completion
- Design-Build delivery method with White Construction

La Jolla Shores Plaza - Suite 204 Tenant Improvements

La Jolla, CA

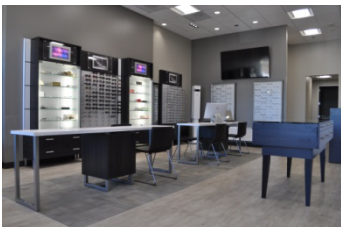
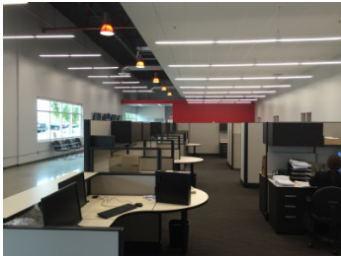
CPCArchitects, Design Principal & Project Architect, November 2014

- \$160,000 Construction Cost, 1,540 SF.
- Design Development through completion
- Design-Build Delivery Method with DPR Construction

La Jolla Shores Plaza - Blackbird Ventures Tenant Improvements

La Jolla, CA

CPCArchitects, Design Principal & Project Architect, November 2014





- \$230,000 Construction Cost, 1,540 SF.
- Design Development through completion
- Design-Build delivery method with DPR Construction

La Jolla Shores Plaza - Suite 208 Tenant Improvements

La Jolla, CA

CPCArchitects, Design Principal & Project Architect, November 2014

- \$160,000 Construction Cost, 1,540 SF.
- Design Development through completion
- Design-Build delivery method with DPR Construction

SCIENCE

Human Longevity Inc. – Exome Lab

La Jolla, CA

CPCArchitects, Design Principal & Project Architect, Present

- 3,324 SF.
- Programming through completion
- Design-Build delivery method with DPR Construction

RCCHS – Institute for Genomics Medicine

San Diego, CA

CPCArchitects, Design Principal & Project Manager, August 2016

- 1,612sf.
- Programming through completion
- Design-Build with Align Builders

UCSD – Nan Hao Lab

La Jolla, CA

CPCArchitects, Design Principal & Project Manager, July 2016

- 1,745 sf.
- Design Development through completion
- Design-Bid-Build with Flexcore Builders

EMD Millipore - Project Magnus Building 20 Tenant Improvement & Consolidation

Temecula, CA

CPCArchitects, Business Development Principal, Under Construction

- \$7,000,000 Construction Cost, 90,000 sf. Modernization of existing facility including cold rooms
- Value Engineering, facility re-design, Construction Administration
- Design-Build Delivery Method with DPR Construction

HIGHER EDUCATION

UCSD – Nan Hao Lab

La Jolla, CA

CPCArchitects, Design Principal & Project Manager, July 2016

- 1,745 sf.
- Design Development through completion
- Design-Bid- Build with Flexcore Builders

UCSD – One Button Studio

La Jolla, CA

CPCArchitects, Business Development Principal, September 2014

- \$60,000 Construction Cost, 540 sf. Conversion of two existing class rooms into One Button Studio
- Design Development through completion

K-12

Spectrum Montessori – Irvine

Irvine, CA

CPCArchitects, Design Principal & Project Architect, December 2015

- 1,808 sf.
- Design Development through completion
- Design-Bid- Build



|