

“REVELATIONS”

“A wealthy American guy & a Soviet skating phenom discover a love that transcends the madness of the Cold War.”

“The ultimate geopolitical thriller & the greatest love story ever told.”

“The successful “Dances with Wolves”, “Titanic” & “Avatar” story structure set in the USSR.”



Katya Sharinsky



Cliff Donahue

“Revelations” Key Data Summary



“A epic geopolitical thriller & love story that transcends the madness of the Cold War.”

“Revelations” is a serious attempt to use entertaining cinema to reveal the many commonalities between the American and Russian people project an exciting and common sense path to a new era of reconciliation, cooperation and prosperity that will benefit everyone.

The compelling and historic nature of this vision and the multitude of exciting resonance elements will insure strong global market acceptance and profitability for “Revelations”.

Key Data

- Screenplay Title: “Revelations” WGAE Registration #: **1225127**
- Author: Donald G. Skipper - **100%** - Owner: Donald G. Skipper - **100%**
- Genres: **Action/Adventure/Thriller/Clandestine/Artistry**
- Anticipated MPAA Rating: **PG-13**
- Profile: **Very high concept & epic scope with historic implications**
- Genre Revenue Ceiling– **Box office & DVD: \$1.2 billion – “Skyfall” 2012**
- Genre Revenue Average – **Box office & DVD: \$410 million since 2006**
- Production Budget: **\$25 million** Equity Capital Requirement: **\$10 million**
- Franchise Potential: **“Revelations” is the prequel to “insurrection”.**
- Demographic Profile: **Very broad – Targets all adult age & gender demographics**
- International Revenue Potential: **Very high cross cultural resonance features**





RESONANCE

- Epic Love Story
- Geopolitical Thriller
- Fascinating Characters
- Performance Artistry
- Exciting Venues



The “Revelations” Concept



Overview

“Revelations” was inspired by actual events and people that the author encountered when he travelled through the oilfields of the USSR for 4 months in the autumn/winter of 1979. That experience revealed a great contrasts between the adversarial perceptions of the Cold War and the commonalities between the Soviet and American people. Two great peoples separated by a costly and senseless geopolitical conflict that limited the ability of both nations to reach their full potential.

Almost all people share a desire to live in peace, happiness and prosperity but the world is immersed in senseless and destructive conflicts that prevent most people from reaching their life potential. The political elites and the media who serve their interests benefit from the dysfunctional status quo to the detriment of everyone else.

Motion pictures may be the only major medium where the irrationality of geopolitical conflicts can be exposed in the cause of inspiring a global reconciliation scenario that would create a much better world for all concerned. Reconciliation is not just a good idea, it is a human necessity in a nuclear age. “Revelations” is one attempt to use the movie medium to light a path to a much better world.

The Movie

“Dances With Wolves”, “Titanic” and “Avatar” are among the most cinematically and financially successful movies of all time. In each film, an American guy is imbedded in a hostile culture where he finds a profound but forbidden romantic connection and a much higher purpose in his life.

“Revelations” adopts this successful story structure and sets it against the backdrop of the most important events of the late 20th century, the fall of the Soviet Union The goals are the create perhaps the greatest love conquers all story in cinema history while telling the story of the Soviet people who risked everything to help end the USSR.

The hope is that the story will inspire a higher awareness that sparks a reconciliation between the USA and modern Russia as we drift back toward another Cold War that could turn hot at any moment in a nuclear age. **Allow the audience to experience the power of romance and artistry to bridge the great geopolitical divide.**

The “Katya Sharinsky” Concept



“She is the most beautiful part of the Russian spirit, the part the world never sees.”

While on his trip to the USSR in 1979, the author met an extraordinary young Soviet woman named Katya. She possessed a surreal and captivating beauty but it was the intelligent serenity of her spirit that made her exceptional. She also moved with a natural gracefulness that made her a superb dancer but also projected a serene and powerful sensuality as she moved. She possessed a higher awareness about most things. She spoke of romance and intimacy from a much better place and time but she seemed so out of place in the sadness of the USSR. She had led a difficult life but retained her inner beauty and optimism about a better future.



Katya served as the inspiration for the character Katya in “Revelations”. The movie script incorporates and extends her many attributes into a much larger context. She is designed to be a revelation in the realm of femininity. Perhaps God’s best work in feminine form trapped in the brutal realities of the USSR that she transcends in almost everything she does. She is spiritually strong but emotionally vulnerable.

The USSR took the Olympic Games very seriously. The most gifted were forced into Olympic careers and discarded when they did not perform well. Katya’s extraordinary artistry is also a prison of isolation that keeps her from a normal life.

Katya experiences the harsh intolerance for dissent in the USSR as her mother is brutally murdered for seeking justice for others. Katya loses all fear of death.



After her mother’s death, Katya’s father, Yuri, decides to pursue the path of reform within the oil and gas ministry. His choices risks everything for both of them and Katya’s fame is the only impediment to severe consequences. Katya resists the tyranny of the KGB and admires her father’s courage but she believes that reform is a hopeless cause in the USSR. Concern for Yuri and her countrymen drives her to excel.

Cliff arrives from Texas and represents the ultimate form of resistance and romantic adventure in Katya’s dark existence. She throws caution to the wind and pursues her romantic dreams with the only man who ever inspired her. The bond they form becomes the driving force of her life and the movie itself. It is the ultimate love conquers all story set against the most important events of our time.

“Katya Sharinsky” Profile



Modern cinema and culture are largely devoid of exciting and positive feminine protagonists & role models. Katya Sharinsky is designed to display the most positive attributes of modern femininity as a means to attract large global audiences:

- Executes performance artistry at awe inspiring levels
- Exceptional intelligence & insightfulness
- Captivating and sophisticated natural beauty
- Exudes an irresistible but subtle sensuality
- Higher awareness in all things - prescient
- Reserved but insightful leadership skills
- Exudes a natural understated but captivating sensuality
- High professional achievement
- Emotional maturity & insightful life priorities
- Great emotional depth & range - Vulnerable
- A compelling presence that transcends beauty
- Romantically assertive and loyal
- A force to be reckoned with on all levels
- Extreme courage & determination to the point of reckless at times
- Not into materialism or superficiality
- Awe inspiring in the totality of her persona
- A woman who dominates in a man's world

While the above profile may seem impossible in the real world, cultural transformation often begins with the appearance of extraordinary characters that can reset cultural norms & expectations. Katya is designed to be an exemplary role model for young women.

Men, women and young adults are naturally attracted to all these attributes in women. These traits will also transcend cultural differences to attract global audiences.

Katya is a character that men & women will enjoy and want their daughters to emulate. This is the foundation of her powerful cinematic appeal.

The “Revelations” Synopsis



Katya



Cliff

It is 1979. Cliff, 24, is the son of a wealthy Texas family who owns a company that sold ten oil-drilling rigs to the USSR. He becomes engaged to Melanie just before he travels to oilfields in the Soviet Union to resolve major problems with the rigs.

- Cliff befriends Yuri, 41, the head of the Volgograd oil ministry Yuri is a leader of a clandestine movement within the oil and gas ministries of the USSR than is plotting to bring an end to the totalitarian soviet state. Vladimir is an orphan who was raised by Yuri, and is now his driver and associate.
- Katya, 20, is Yuri's daughter and an extraordinary Olympic skater who's performance at the 1976 Olympics is sabotaged by the KGB. Her failure at the Olympics frees Dmitri, the local head of the KGB, to murder Katya's mother, Sasha, as means to suppress political dissidence by Sasha and Yuri. Katya remains depressed about her death and trapped in servitude to the soviet state as the 1980 Olympics approach.
- Alexei is an interior ministry official who investigates Sasha's death for Yuri and falls hard for Katya. Katya discovers Cliff and her despondency triggers a rebellious streak that motivates her to pursue a forbidden romance with Cliff. Cliff is a reluctant participant in Katya's romantic game but he is moved by the beauty of her spirit and artistry amid the sadness of her life. Katya cleverly follows Cliff to a remote dacha.
- Cliff saves Katya's life in a skating accident near the dacha and their attraction for each other can no longer be contained. Their brief but deeply intimate relationship evolves into an enduring bond of mutual affection and devotion that transcends culture, language, the geopolitics of the Cold War and its dangerous aftermath.
- Katya and Cliff's relationship is cut short when the KGB attempts to murder Cliff after he attacks Dmitri to protect Katya. Cliff, Katya and Yuri all have intense confrontations with Dmitri. Dmitri takes Cliff to Moscow where Cliff defies demands by the head of the Soviet Oil and Gas Ministry.
- Cliff faces death by the KGB at a remote location until Katya and CIA agent Ted intervene to save his life and extract him from Russia. Through Cliff and Ted, the CIA becomes involved with supporting Yuri's reform efforts within the USSR.

The "Revelations" Synopsis (Cont'd)



Yuri



- Cliff's departure plunges Katya into depression that threatens her Olympic goals that are vital to Yuri's political activities and their safety.
- Ted and Alexei arrange for Cliff and Katya reunite briefly at the 1980 Olympics in Lake Placid, New York. In that one evening together, Katya finds the inspiration to channel her great affection for Cliff into her artistry.
- Katya wins the gold medal with an awe-inspiring performance that converts the Cold War hostility of the American crowd into great admiration. She is forced to leave Cliff with a promise of devotion and the gold medal. The victory launches Katya to international stardom and she becomes Russian national heroine. The Afghanistan invasion makes a life with Cliff impossible but Katya's heroine status provides protection for Yuri's reform efforts.
- Cliff marries Melanie in the belief that his relationship with Katya is hopeless in the political freeze that follows the soviet invasion of Afghanistan. Katya pursues her dream of a career in ballet at the Bolshoi and remains true to Cliff.
- In 1991, Cliff divorces Melanie and his parents are killed in a tragic car accident. Devastated, Cliff returns to the turmoil of post soviet Russia to find Katya. Cliff and Katya resume their romance with big dreams for the future. Katya has enhanced her national stature with many years as the prima ballerina at the Bolshoi Ballet but she longs for marriage and a family with Cliff.
- Yuri is elected the leader of the Russian Reform Party and thereby spoils a plot by Dmitri to overthrow the Russian government and sell nuclear missiles to Iran. Vladimir has become a financial protégé of Dmitri but he is an accomplice of Alexei as well. The conspirators kidnap Cliff and Katya to force Yuri to resign his position as party leader. Katya is released but Cliff is brutally beaten and imprisoned by Dmitri's thugs.
- Alexei pretended to support Dmitri in his coup ambitions but he in fact leads a covert effort with CIA to expose the plot. He appears conflicted by his affection for Katya, his political ambitions and his conscience. Vladimir is an X factor in the whole scenario because it is unclear whether he will side with Dmitri to achieve his financial ambitions over his loyalty to Yuri and Katya.

The “Revelations” Synopsis (Cont’d)



Dmitri



- Cliff is forced to kill a corrupt police officer in self-defense to effect his escape.
- Three other officers are killed by Andrei who is an enraged police Captain and the brother of the officer that Cliff killed. Andrei blames Cliff for all four murders and all the Moscow security forces launch a desperate manhunt for Cliff.
- Katya eludes her security with Vladimir’s help and joins Cliff on the run. The coup conspirators frame Yuri and Alexei for plotting to murder the President and take over the government.
- Cliff and Katya free Yuri and Alexei but Yuri and Alexei are both severely wounded. Cliff and Katya race to stop the true assassin, Victor, who is about to meet with the Russian President in the Kremlin on a mission to assassinate him to unleash Dmitri’s multi-billion dollar sale of nuclear missiles to Iran.
- The coup has members among the leadership of the police, the security services and the armed services so Cliff and Katya have no one to turn to help save the President.
- Katya leads Cliff and Vladimir to crash their armored limousine into the Kremlin and foil the plot. The President narrowly avoids assassination but Cliff is seriously wounded saving Katya from a gunshot fired by Dmitri.
- Vladimir kills Dmitri with a military knife to the forehead. Cliff survives but is deeply conflicted as Katya is further elevated to hero status in Russia.
- Cliff realizes that Katya is important to Russia’s future and that marrying an American would be a political problem. Cliff leaves an inspiring farewell letter for Katya before he departs alone for Paris. Katya is torn by loyalty to Yuri, duty to her country and her love for Cliff.
- After much suspense, Katya joins Cliff in Paris with help from Ted.

The “Revelations” Sequel

“Insurrection”



VICTORIA

“Insurrection” is the first sequel to “Revelations”. It is set in 2018. Katya and Cliff have a daughter, Victoria, who has become a ballet sensation in the USA.

Victoria is kidnapped by the Russian President when Yuri incites an insurrection in Russia.

You can find much more information in the “Insurrection” business plan which can be provided to you upon request.



The Global Market Opportunity

Almost everyone likes movies but is also familiar with the recurring frustration of searching the movie listings and finding nothing that inspires them to go to the theater. As a result, 90% of possible movie goers in the USA saw about 3 movies on average in theaters in 2019 out of 835 theatrical releases in the USA.

The global market for movies is over \$50 billion annually and the only major constraint on increasing that number is the supply of high quality films that engage the human heart, mind and spirit in profound and poignant ways.

RSL was devised to create exciting and socially relevant films that will inspire these great “disaffected” audiences to attend movies a lot more often. ‘Katya Sharinsky’ & “Revelations” are designed to inspire them.

The potential global audience for “Revelations” could be immeasurable if it succeeds in connecting audiences that will be captivated by this terrifying real world scenario and the power of the “Katya Sharinsky” persona.

“Katya Sharinsky” will be marketed as an inspiring female protagonist in the “Jason Bourne” and “James Bond” genre. This may be the most consistently profitable genre in cinema with a long history of successful franchises.

Katya’s character is designed to project a compelling contrast to her male predecessors through her many personal attributes and her ability to use her mind to resolve real world scenarios rather than “Hollywood” contrivances.

The story and her character are carefully designed to appeal to men, women and their children with an attraction that transcends cultural differences to reach broad global demographics and inspire large theater attendance.

This thought provoking film is structured to achieve profound emotional and intellectual engagement of the audience without resorting to costly CGI and endless action sequences that do little to enhance the story progression. It deals with subject matter that could not be more compelling or relevant.

Please compare “Revelations” to the current movie listings to get a feel for its huge box office potential.

KEY TARGET MARKETS

Men - Attractions

- The story
- Katya’s attributes
- Katya’s intellect
- Educational for their kids
- Positive role models for kids

Women - Attractions

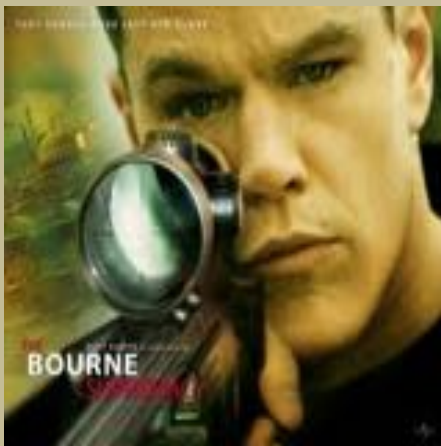
- Epic love story
- Awe inspiring artistry
- Katya’s strong persona
- Katya’s feminine attributes
- Cliff’s masculine attributes
- The emotional progression
- Educational for their kids
- Positive role models for kids

Adolescents – Action/Thriller

Family movie – Adolescent level

Investment Comparables

Below is a summary of major films in the "Revelations" genres since 2006:



Movie	Global Box Office & DVD	Production Budget	Prints & Advert.	Theater Take	Est. Gross	Distrib Fees	Est. To Equity
Casino Royale	\$679	(\$102)	(\$40)	(\$340)	\$197	(\$51)	\$146
Mission Impossible	\$448	(\$150)	(\$60)	(\$224)	\$14	(\$54)	(\$20)
Bourne Ultimatum	\$567	(\$130)	(\$50)	(\$284)	\$103	(\$43)	\$60
The Kingdom	\$121	(\$73)	(\$30)	(\$60)	(\$42)	(\$9)	(\$51)
Quantum Solace	\$646	(\$230)	(\$75)	(\$323)	\$18	(\$48)	(\$30)
Knight & Day	\$294	(\$117)	(\$60)	(\$147)	(\$30)	(\$22)	(\$52)
Salt	\$345	(\$130)	(\$70)	(\$172)	(\$27)	(\$26)	(\$53)
Green Zone	\$116	(\$100)	(\$50)	(\$58)	(\$92)	(\$9)	(\$101)
The Tourist	\$301	(\$100)	(\$50)	(\$150)	\$1	(\$23)	(\$22)
Ides of March	\$88	(\$23)	(\$20)	(\$44)	\$1	(\$7)	(\$6)
Ghost Protocol	\$740	(\$145)	(\$70)	(\$370)	\$155	(\$56)	\$100
Safe House	\$245	(\$85)	(\$40)	(\$122)	(\$2)	(\$18)	(\$20)
Act Of Valor	\$123	(\$12)	(\$10)	(\$61)	\$40	(\$9)	\$31
Hunger Games	\$888	(\$80)	(\$40)	(\$444)	\$324	(\$67)	\$257
Skyfall	\$1,205	(\$200)	(\$75)	(\$602)	\$328	(\$90)	\$238
Bourne Legacy	\$332	(\$125)	(\$60)	(\$166)	(\$19)	(\$25)	(\$44)
Zero Dark 30	\$165	(\$53)	(\$30)	(\$82)	\$0	(\$12)	(\$12)
Catching Fire	\$1,061	(\$130)	(\$50)	(\$530)	\$351	(\$80)	\$272
Jack Ryan	\$132	(\$60)	(\$35)	(\$66)	(\$29)	(\$10)	(\$39)
3 Days To Kill	\$32	(\$28)	(\$25)	(\$16)	(\$37)	(\$2)	(\$39)
Spectre	\$916	(\$300)	(\$80)	(\$458)	\$78	(\$33)	\$45
Jason Bourne	\$448	(\$120)	(\$45)	(\$224)	\$59	(\$24)	\$35
Rogue Nation	\$728	(\$150)	(\$75)	(\$369)	\$134	(\$55)	\$79
White House Down	\$233	(\$150)	(\$32)	(\$116)	(\$65)	(\$10)	(\$75)
Kingsman	\$435	(\$94)	(\$33)	(\$217)	(\$91)	(\$37)	\$54
Man From UNCLE	\$124	(\$75)	(\$30)	(\$62)	(\$43)	(\$10)	(\$53)
Olympus Fallen	\$189	(\$70)	(\$31)	(\$95)	(\$7)	(\$10)	(\$17)
London Fallen	\$211	(\$60)	(\$35)	(\$105)	\$11	(\$10)	\$1
Jack Reacher	\$244	(\$60)	(\$34)	(\$122)	\$28	(\$12)	\$16
Jack Reacher 2	\$173	(\$60)	(\$34)	(\$86)	(\$7)	(\$10)	
Wonder Woman	\$900	(\$150)	(\$45)	(\$450)	\$255	(\$105)	\$150
Totals	\$ 13,129	(\$3,362)	(\$1,414)	(\$6,565)	\$1,606	(\$957)	\$833
Averages	\$410	(\$105)	(\$44)	(\$205)	\$50	(\$30)	\$26
Am.2.0 Base Case	\$205	(\$33)	(\$24)	(\$96)	\$40	(\$10)	\$30
As % Genre Avg.	50%	(31%)	(55%)		84%		

Attributes

- Modest budget - \$25 million
- Exciting Action/Thriller genre
- Huge global revenue potential
- Extraordinary ROI potential
- 2 year recovery potential
- Strong conceptual premise
- Powerful thematic elements
- Broad demographic appeal
- Diverse cross cultural appeal
- Disaffected audience appeal
- Low production complexity
- Short time frame to theaters
- Profound social value
- Poignant emotional resonance
- Engaging characters
- Inspirational musical score
- Exciting thriller elements
- Life relevant subject matter
- Romantic subtexts
- High Concept/Epic scope
- Fills a major film market void
- Very strong DVD profile
- Katya profile
- Exciting franchise potential
- One sequel already written

The Investment Opportunity

“Revelations” can be produced for \$25 million and globally distributed for less than \$20 million of P&A costs to be provided by distributors and others.

This creates a higher equity ratio than most independent films but it is needed to insure the certainty, budgets, control and content of global distribution.

The key to investment success in any film is keeping production budgets low while keeping production values high and insuring broad global distribution with strong financial control of the process. To achieve high ROIs, the story content must be designed to minimize costs and inspire large global audiences.

All RSI films are carefully designed to achieve these goals.

Please consider these possible ROI scenarios for “Revelations”:

<u>Film Name - Insurrection</u>	<u>Est. Revenue</u>	<u>Est. ROE</u>
1. Break even revenue	\$90 million	0%
2. Base case revenue - 38% of genre average	\$161 million	355%
3. Action/Thriller genre average of 20 films	\$410 million	1600%

ROI assumes 40% of production budget is equity. The genre average includes box office and DVD revenues only. Subsidies, presales, brand revenues, talent discounts, non-theatrical distribution and rights sales are all sources of revenue that reduce break even revenue and increase ROIs.

FILM INVESTMENT REALITIES

The above scenarios show the high risk and return profile of film investment. Any revenues less than the \$90 million will result in losses for equity holders because all P&A costs must be deducted before equity receives income.

Any film investment involves high risk. RSI cannot guaranty any income or return of investment from “Revelations”. No funds should be invested that cannot be lost in their entirety without investor hardship.

Risks & Offsets

Market Acceptance Risk

- Strong conceptual premise
- Broad global market profile
- Market study to be completed
- See “Attributes”

Distribution Risk

- Self-funding of P&A
- Powerful marketing profile
- See “Attributes”

RSI/Execution Risk

- See “The Execution Plan”

Completion Risk

- Will be bonded
- Sound production oversight
- Low production complexity

Budget Overrun Risk

- Strict budgetary oversight
- Investor fiduciary focus of RSI

RSL’s CEO has over 25 years of risk assessment and management experience as well as a strong commitment to RSL’s fiduciary responsibilities to investors. Every risk will be identified and aggressively managed.

The Budget

“Revelations” represents a unique investment scenario because it can be produced on a budget of less than \$25 million and has the potential to reach very large revenue levels if it makes a connection with the global audience.

Please consider the following budget assumptions:

1. Pre-Production Budget \$ 1.0 million Equity investors
2. Production Budget \$ 9.0 million Equity investors
3. Production Budget \$ 12.0 million Presales, debt & rebates
4. Post Production Budget \$ 3.0 million Presales, debt & rebates
5. Domestic P&A Budget \$ 20.0 million Presales, debt & rebates

Total Insurrection Budget \$ 45.0 million Primary capital required

This structure allows RSI to self-fund P&A costs and thereby ensure project integrity and distribution while minimizing distribution and P&A costs. Failure to achieve theatrical distribution is the largest risk to any film project and self-funding of P&A will allow RSL to mitigate this risk.

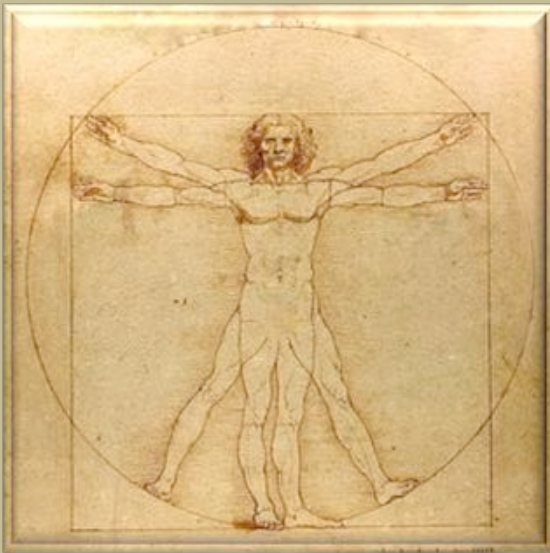
RSI will aggressively pursue and consider distributor and co-production partners that would provide funds and reduce risk to RSI investors while

Market Acceptance

Acceptance by global audiences is a major factor in the financial success of any film project. RSL will manage this risk as follows:

- Write all stories with modest budgets and high revenue ceilings.
- Utilize advanced market testing to validate concepts.
- Develop stories with a multitude of powerful intellectual, emotional and visceral resonance elements that will attract very large audiences.
- Target the preferences of the great “disaffected” audiences.

Renaissance Studio, Ltd.



Renaissance Studio, Ltd.

“The Future Of Filmmaking &
Investment.”

CONTACT INFORMATION

Donald G. Skipper – CEO

Don@RenaissanceStudio.org

www.RenaissanceStudio.org

Renaissance Studio, Ltd. (“RSL”) is an audience and investor focused company that was created to exploit the many flaws in the film industry status quo. RSL is designed as an investor fiduciary medium for sourcing, developing, producing and distributing superior films that are carefully structured to appeal to large global audiences and deliver superior ROIs to insightful investors.

RSL is grounded in a comprehensive and exploitive, 150 page business plan to create a going concern studio that can compete with the major studios and produce a compelling IPO profile in year 5 that will deliver exceptional ROIs.

By design, RSL leadership is not comprised of industry “experts” with lengthy track records of losing money for investors. It consists of a CEO with 1) multi-decade experience in the capital markets that includes risk and business evaluations of countless firms in multiple industries through numerous economic and industry cycles and 2) over 25 years of screenwriting experience.

RSL has completed exhaustive financial research on the movie industry that includes detailed evaluations of every major producer, studio, director and movie that achieved box office revenue above \$30 million since 2006. That data reveals that over 90% of producers, directors and major talent have lost money for equity investors in their careers to date. This reality severely discounts their value as guarantors of financial success in filmmaking and investment.

RSL writes and develops all of its own projects to match its filmmaking vision and capital markets strategy. RSL is not raising money to just produce movies. It is seeking primary capital to create maximum leverage to contract the optimum teams to execute the RSL business plan and movie projects.

RSL employs proprietary story origination and risk management methodologies that mitigate downside risks while preserving high revenue ceilings. Please invest the time to visit the link below for much more data on RSL:

www.renaissancestudio.org

Key Resonance Elements

- Emotional
- Visceral
- Intellectual
- Educational
- Life relevance/affirming
- Enlightenment
- Positive affirmations
- Sensual/Sexual
- Intimate/Poignant
- Conflict/Jeopardy
- Action/Adventure/Thriller
- Athletic/Martial arts
- Clandestine/Geopolitical
- Romance
- Humor
- Audio & visual
- Sensational artistry
- New & high concepts
- New talent
- Awe inspiring content

“Revelations” features all of the above resonance elements that target broad global demographics.

Content Metrics & Methodologies

“Creating The Movies That Large Global Audiences Want to See.”

“Movie Content Is 80% Of The Financial Success Equation”

The ability to create superior movie content that resonates with broad demographics and large international audiences is the most vital element in successful filmmaking and investment. Please consider the following comments:

- RSL has invested a vast amount of time and resources on the R&D of proprietary methodologies for the writing and development of high concept movies that will resonate with broad global audiences.
- This process is not rocket science. It is a common sense analysis that most rational adults understand at an intuitive level as they consider any movie listing. RSL has researched developed and codified the process into proprietary methodologies.
- An evaluation of past movies reveals that at least 8 out of 10 movies should never have been made because the potential markets were too small relative to the budget. Elimination of these projects dramatically reduces market acceptance risks.
- The RSL projects have not been written by random screenwriters within flawed “Hollywood” story development processes that ignore global movie audience preferences and capital markets opportunities.
- All RSL films can be produced on cost effective budgets below \$35 million and the content is integrated with a compelling filmmaking and capital markets plan.
- RSL produces triumph of the human spirit stories that project a positive alternative narrative to the gratuitous violence, action, sexuality, horror depravity and shallow story contrivances that dominate modern cinema.

The most valuable skill in film is the ability to conceive and craft a great story.

95% of “Hollywood” movies would not meet RSL’s green light standards.

The RSI Filmmaking Vision



Almost everyone is familiar with the recurring frustration of wanting to go to a movie and finding nothing in the movie listings that inspires their interest. RSL will exploit this reality by making compelling films on modest budgets that excite the huge “disaffected” global audiences who love movies but seldom find any that inspire them in profound and poignant ways. This strategy is made possible by RSL’s proprietary story writing and development methodologies.

RSL’s strategy is to produce content and character driven stories with powerful resonance elements that engage audiences on intellectual, emotional and visceral levels and transcend cultural differences to create global market appeal. RSL is designed to fill the void between superficial and large budget studio films that are long on visual effects and short on emotional and visceral resonance and smaller “Indie” films with very narrow market appeal.

RSL will create films that inspire the human heart, mind, spirit and emotions in profound ways. Break through stories that are awe inspiring and rock the world with their innovative stories, themes, emotional progressions, artistry and relevance. Triumph of the human spirit stories that offer life relevant content along with inspiration and positive role models for young viewers.

These stories are not just a theory. RSL owns the full rights to eleven major screenplays that meet these criteria. “Revelations” is one of many.

Social Conscience

Almost all humans share a common desire to live in peace, liberty and prosperity but the world is immersed in economic stagnation, political strife and social decay. RSL asserts that movies are a powerful medium to effect positive social and political change and that engaging the most important issues of the modern age in entertaining ways is a path to consistent financial success in filmmaking. RSL films will resonate with people of all cultures who value positive insights in a difficult world. All RSL films will be triumph of the human spirit stories that inspire and illuminate as they entertain.

Execution Profile

Film Time Line

Months 1 - 2

- Market acceptance study
- Finalize director/Key cast
- Pre-production – Script final
- Story boards final
- Marketing of film
- Casting & crew
- Location scouting
- Lock production schedule
- Equipment props costumes
- Begin set construction

Month 2

- Locations secured
- Casting and crew completed
- Rehearsals

Month 3

- Establish editorial
- Begin principal photography
- Complete key sets

Months 4 - 6

- Editorial & photography
- Marketing/Press kit done
- Editorial - First cut complete

Months 7 - 8

- Finalize sound, music, score
- Final cut to distribution

RSL is not comprised of film industry “experts” with lengthy film making resumes or expertise. RSL is led by a CEO with successful, multi-decade experience in the capital markets and extensive screenwriting experience. His profile includes risk and business evaluations of countless firms in multiple industries through numerous economic and industry cycles. RSL understands the film industry very well after years of exhaustive analysis

There are many quality producers who could film “Revelations” with strong production values. Most have the following drawbacks:

1. They do not have strong track records of sourcing, developing and producing films that large global audiences want to see.
2. Their films almost never deliver superior ROIs to equity investors.
3. They exploit investors rather than reward them for the risk they take.
4. They engage in unsound risk and business management practices.

Most movie investors believe that it is important to invest in a “name” movie producer. This belief persists despite the reality that almost all “name” film producers consistently lose money for investors.

RSL does not currently have a production and distribution team in place for “Revelations”. This reality is a function of the following factors:

1. Industry professionals respond to only one thing: Money in place.
2. RSL does not have the money in place to secure commitments.
3. Partnering with existing producers or professionals in advance is counterproductive to achieving RSL’s ROI goals.
4. Deferring attachments until pre-production funding will allow RSL to assemble the OPTIMUM execution team and casting to successfully execute the cinematic and financial vision.

RSL has many options for quality directors and line producers. RSL will invest no production funds until a top execution team is approved by the “Revelations” investors.

Financial & Process Controls



RSL's innovative approach is designed to fully reward investors for the risks they take. Execution risk will likely be a significant concern of investors. RSL offers the following scenario to mitigate this risk:

- Potential investors review the full RSL business plan and complete their due diligence on “Revelations”.
- If investors embrace the RSL vision for “Revelations”, investors would fund the \$1 million pre-production budget and offer RSL a proof of funds for the balance that talent agencies would respect. The balance could be an escrow deposit, a contractual commitment or negotiable letter of credit.
- In pre-production, the RSL team would complete the business, production, marketing, casting and distribution plans and budgets for “Revelations”.
- RSL secures a positive market analysis for “Revelations” and then assembles an ideal production and distribution team for investor approval.
- If the investors approve the execution team, plan and budget for “Revelations”, \$10 million of the production funds would be advanced into an escrow account with an escrow agent designated by the investor(s).
- RSL would prepare escrow draw requests that would be tied to specific performance requirements in the budget for review and approval by the escrow agent as “Revelations” moves forward.
- RSL will conduct screenings of the final cut of “Revelations” to validate its audience acceptance factors prior to requesting the funding of the remaining \$10 million of the budget to finance P&A expenses.

This structured approach is far superior to relying on existing “Hollywood” producers that are committed to the flawed Hollywood story development and business practices that do not produce superior ROIs for investors.

It also insures that RSL's alternative vision is implemented and investor interests remain the top priority.

Project Execution Talent



Upon receipt of the funding commitment from the investors, RSL will negotiate with top producers, directors, casting agents and line producers to assemble a high quality and cost effective execution team for “Revelations” for investor approval. This approach is superior because it provides RSL with the leverage to contract the optimal leadership team on the best terms for the project rather than settling for the only available teams prior to a funding commitment.

The \$1 million seed funds will be advanced by the investors so the approved team can finalize the script, the project and distribution plans, the cast, market acceptance validations and the full production execution team for approval by the project investors. Upon approval, the investors will advance additional funds so the project can move into preproduction.

RSL will strive not to contract with producers, directors and major “A List” talent who are unwilling to defer a substantial portion of their compensation to the “back end” of the project. Unlike most major studios, RSL will offer full financial transparency to create confidence that the “back end” will be fair. This and the modest RSL film budgets with strong global resonance profiles should induce talent to defer compensation. This approach has the following advantages.

- It converts talent into substantial investors and ties their income to earnings.
- It motivates talent to perform and promote the movie at their highest level.
- It reduces investor capital at risk and downside project risks.

All RSL producers, directors and line producers must embrace the RSL filmmaking and project visions that are focused of delivering cost effective films that will resonate with very large international audiences. They must also be capable of focusing on the vital importance of conveying intellectual, emotional, visceral, sensual, intimate, poignant, romantic, artistic, audio and visual resonance elements that place a priority on audience engagement.

RSL will not permit reliance of gratuitous action, CGI, violence, sexuality, horror or depravity over high quality dramatic and character progressions.

“Revelations” Casting



Elena Radionova

- + A Russian skating champion
- + Exudes intellect/sensuality
- + Stunning visual attributes
- No known acting experience



Alicia Vikander

- + Good actress with range
- + Projects intellect/sensuality
- + Well established
- + Former ballerina

Cost effective casting is vital to creating a superior cinematic experience for audiences and to maximizing ROIs to “Revelations” investors. The best stories with a multitude of powerful resonance elements are only as good as the abilities of directors and actors to grasp the concepts and translate them into performances that engage and inspire audiences on many levels.

Attracting cost effective talent that can deliver superior production values is a challenge for all producers. Directors and actors deliver their best performance when they are provided with superior content that inspires them to perform at their highest level. “Revelations” offers a multitude of resonance elements that are designed to resonate with large global audiences. Those same elements represent opportunities that challenge and inspire directors and actors as well. Talent is much more likely to take “back end” compensation if they really believe in the movie concept and their role within it.

The “Revelations” Producer & Director

There are a multitude of high quality producers who could lead “Revelations”. There is a much smaller group of proven directors who could fully grasp the vision and its multitude of resonance elements that are vital to reaching its full cinematic and commercial potential. RSL is confident that the right director will be available with the primary capital commitment in place.

Katya Sharinsky

The nature of the story and characters in “Revelations” will provide a large pool of actor options. The one exception is the lead character “Katya Sharinsky”. Michelle is a very complex and demanding character. She must project a strong intellect, a broad and believable emotional range, a commanding and captivating screen presence, athletic abilities and a natural sensuality. The list of major actresses who match this description is small. Great care will be taken in choosing the right actress to lead this major franchise. The actresses to the left of this page are possibilities as reference points only.

RSL Commitments

RSL is laser focused on creating exceptional movies that will deliver superior ROIs to global audiences and RSL investors. To achieve this goal, RSL will employ the most advanced creative, marketing and risk management methodologies and controls to limit downside risks, optimize cost effectiveness and maximize upside rates of return on investment.

RSL will offer independent accounting oversight and full financial transparency to all its investors.

Good faith is a cornerstone of the RSL business philosophy.

All RSL films will endeavor to project a positive alternative narrative and offer an entertaining refuge in a very difficult world.

Risk Management

The advanced management of downside risks is a vital component of the RSL value proposition to investors. The goal is to substantially limit the risks of capital loss while positioning the films to realize extraordinary upside ROIs. The goal is to create a compelling risk adjusted return profile that compare favorably to almost any investment alternative.

- Prior to commencement of production, RSL will generate foreign presales in certain smaller territories e.g., Eastern Europe, South America–Brazil, Australia, New Zealand etc., to 1) generate deposits, facilitate presales advances and 2) facilitate bankable sales estimates/advances for the remaining foreign territories and 3) validate market acceptance.
- RSL will package the film projects to fully exploit all available government rebates, subsidies and brand integration revenues (“Soft Money”).
- Soft Money revenues go can go straight to investment recoupment up to 50% (or more depending upon the amount of brand integration opportunities written into the screenplay), of the total production budget amount and when combined with foreign pre-sales and sales estimate advances (as above), can provide a combination of project underwriting and production cash flow or recoupment of up to 100% of the production budget with major territories such as the North American distribution market still not exploited.
- RSL’s ability to induce them to take “back end” equity participations in lieu of a significant portion of their traditional “front end” compensation. This approach converts talent into investors, motivates them to perform at their highest level and reduces downside risks for RSL equity investors. It also provides RSL with a competitive advantage versus other producers in securing the optimum talent on a cost effective basis.
- RSL’s modest budgets and superior content origination methodologies that are focused on powerful resonance elements that will attract large global audiences are the best hedge against downside risks.

Capital At Risk Summary



The \$25 million primary capital request for “Revelations” is vital to establish the credibility to attract the best talent to execute the project business plan on the best possible terms and conditions. However, RSL will pursue many other sources of capital to minimize the actual capital at risk for “Revelations” investors. Please consider the following summary that demonstrates one plausible scenario that may unfold for “Revelations”.

Description (\$Millions)	Amount
Primary Capital request	\$ 25
- Government rebates	(\$ 4)
- Talent deferrals	(\$ 3)
- Foreign presales	(\$ 10)
- Brand integration	(\$ 2)
Net Capital At Risk Estimate	\$ 6

The fact that “Revelations” falls within a genre with \$410 million of average revenue from box office and DVD alone is reason for optimism that the foreign presale estimate above is reasonable and could be much higher.

The presence of the primary capital provides RSL with vital credibility to secure these other sources of offsetting capital. It also enables RSL to fund its own print and advertising expenses. This is very important for the following reasons:

- RSL has immediate credibility and preferences with agencies & distributors
- RSL can negotiate lower fees and superior terms with talent & distributors
- Talent is more willing to consider “back end” compensation
- Brands take the project more seriously and offer better terms
- RSL can retain creative and advertising control
- RSL can optimize the release and cost effectiveness of advertising

Return On Investment Summary

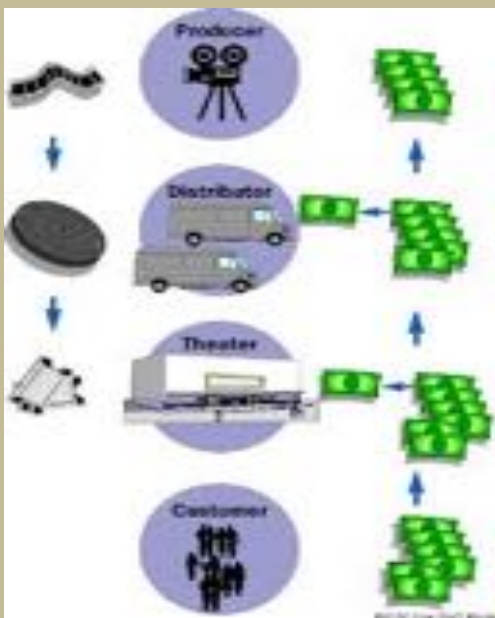


The following table summarizes estimates of the “Revelations” return on investment profile. Audience acceptance levels and actual revenues are unknowable so this data is not a prediction of actual outcomes. It represents a reasonable spectrum of goals and possible outcomes:

Description (\$Millions)	Base Case	Base Case 2	Genre Average
Box office revenue (gross)	\$140	\$200	\$350
+ DVD revenue	\$ 10	\$ 12	\$ 76
+ Ancillary revenue (net)	\$ 30	\$ 40	\$ 55
+ Government rebates	\$ 4	\$ 4	\$ 6
+ Brand integration	\$ 2	\$ 2	\$ 5
Total Revenue Estimate	\$186	\$258	\$492
- Theater takes	(\$70)	(\$100)	(\$213)
- Distributor fees	(\$10)	(\$ 15)	(\$ 32)
- Production budget	(\$24)	(\$ 24)	(\$ 24)
- P&A budget	(\$20)	(\$25)	(\$30)
- RSL Overhead	(\$ 1)	(\$ 1)	(\$ 1)
Total Cost Estimates	(\$125)	(\$165)	\$328
Total Est. Earnings	\$ 61	\$93	\$164
ROI multiple on \$10 million Primary Equity	6.1x	9.3x	4.7x
ROI multiple on \$ 6 million possible capital at risk	10.1x	11.8x	27.3x

RSL’s mission is to deliver extraordinary ROIs to global audiences and RSL investors. RSL will employ sources of cost effective debt capital wherever it is possible to reduce primary capital at risk and thereby increase ROIs for “Revelations” investors.

Distribution Strategy



Any motion picture is of little value if it cannot achieve a theatrical release.

“Revelations” cannot achieve RSL’s ROI goals without a global release.

Conventional distribution involves an agreement with a studio or independent distributor that is responsible for funding the print and advertising (“P&A”) budgets and distributing the film to theaters. There are several major issues:

1. Most studios and distributors will not consider a film until it is complete unless the producer has a production deal in place with them.
2. Production investors are forced to take the risk that there will be no theatrical distribution and most of their investment will be lost.
3. Distributors often want input on the casting and the story content. This forces films into the flawed industry parameters that seldom inspire global audiences or produce ROIs for production investors.
4. P&A funds advanced by distributors and their up to 15% distribution fees must be recouped before production investors receive proceeds.
5. Distributors do not care if production investors make money. They just want to recover their costs and their fees.
6. The producer may have no control over the P&A budgets, the strategy of advertising or the number of theater locations that will be used.



RSL must avoid these issues by funding its own P&A expenses and managing its own international advertising strategy and budget to insure broad theatrical distribution at minimal cost. This approach requires the investment of more equity but this is well justified by increased distribution certainty and control.

RSL’s studio profile will facilitate direct deals with theater chains.

While RSL will explore productive relationships with distributors, it is likely that self-distribution will be the best approach to achieve RSL’s ROI goals.

Production funds will not be spent on “Revelations” until a sound distribution plan is approved and P&A funding is assured.

RSL will aggressively pursue every cost effective content market.



Key RSL Executive

Donald G. Skipper - CEO



DONALD G. SKIPPER

A student of history, politics, religion, geopolitics, cultures, human nature, screenwriting, motion pictures, psychology, philosophy, sociology, business, markets, marketing, advertising, economics, risk, finance, technology, business, analytics, industries, education, advanced metrics and the capital markets.

Very unique experiences with international travel and interpersonal relationships in countless and diverse circumstances.

All of the above is an invaluable resource in creating exceptional story content and matching it to global audience preferences.

Key Skill Sets

- Over 30 years of successful experience in the capital markets/finance/marketing
- Seasoned strategic vision and judgment. Strong leadership and interpersonal skills
- Sees the big picture of complex situations and develops innovative solutions
- Strong imagination that devises “out of the box” solutions to difficult problems
- Extensive financial modeling, preparation and analysis
- Insightful ability to correctly evaluate the intrinsic merits of business profiles and devise innovative ideas that resolve issues and create competitive advantages
- Sound understanding of economics and geopolitics as they relate to business
- Persuasive, professional communicator
- Valuable insights derived from long term exposure to economic, business and capital markets cycles and to business models across multiple industries
- Proven team builder with strong project management skills
- Ability to analyze and convert innovative concepts into compelling business plans
- Access to a large network of capital sources and human resources
- Sound understanding of accounting and treasury management dynamics
- Lengthy operating and project management experience
- The skill to see the big picture of investor objectives and to devise transaction structures and business plans that maximize shareholder value
- Ability to see the core essence of complex situations and to evaluate business opportunities based on their intrinsic merit and commercial potential
- Extensive interaction with executive level decision makers and investors as well as analyzing corporate business plans, capital structures and financial models

Movie Industry

- Author of 17 motion picture screenplays and one published novel over 20 years.
- Interaction with film industry professionals over 15 years.
- Developer of sophisticated financial analysis metrics for movies.
- Founder, CEO and author of Renaissance Studio, Ltd. business model and plan.