

# Flash Technology

Medium Intensity  
Obstruction Lighting

## FTS 370w

VANGUARD™ LED Series - White FAA L-865  
The Next Generation in LED Obstruction Lighting

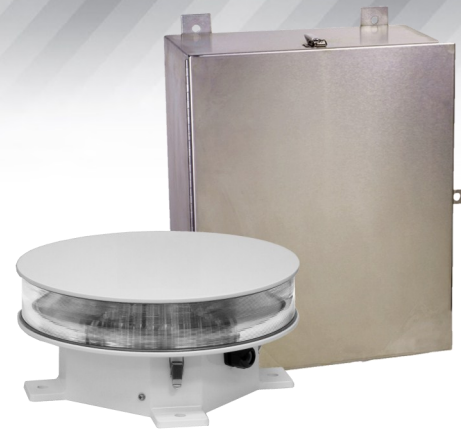
### Application

The Vanguard™ LED series is the most advanced lighting system Flash Technology has ever developed.

The FTS 370w is a white LED flashing light for day and night to create FAA tower types D1 or D2 for structures between 200' and 500' AGL.

### Features/Benefits

- SMART™ flashhead/marker interface provides forward compatibility as technology improves
- PLC - single 2-conductor cable provides power and communication to flashhead and markers
- LED by-pass circuitry provides longer life by allowing the loss of individual LED's up to the 25% limit per FAA Engineering Brief 67
- Exceeds IEC 61000-4-5 *Surge Immunity* specification for power surges and transient voltage: tested to 10 times the FAA specifications standards, up to 20kA
- Single stainless steel enclosure for power, control and monitoring with no interlock switch
- Upgradeable firmware - remote or onsite via USB
- Monitoring options:
  - Ethernet, cellular, satellite, POTS
  - SNMP, Modbus, or Eagle protocols
  - 3G AT&T, Verizon
  - Dry Contacts (Day, Night, Marker, PEC, GPS, Comm, Mode)
- Optional Wi-Fi allows any Wi-Fi enabled device wireless connectivity onsite for diagnostics, programming & lighting inspections



Patent Pending

FAA type D1 or D2 200'-500' AGL



### Specifications

- Power Consumption: Day 80W, Night 12W
- Input Voltage: 100-240 VAC
- Frequency: 50-60 Hz
- FH Dimensions: 15.75" dia. x 7.31"
- Controller Dimensions: 21.75" x 16.75" x 6.44"
- FH Weight: 26.3 lbs. (11.92 kg)
- Controller Weight: 44 lbs. (20 kg)
- Protection Rating: IP65, NEMA 4X

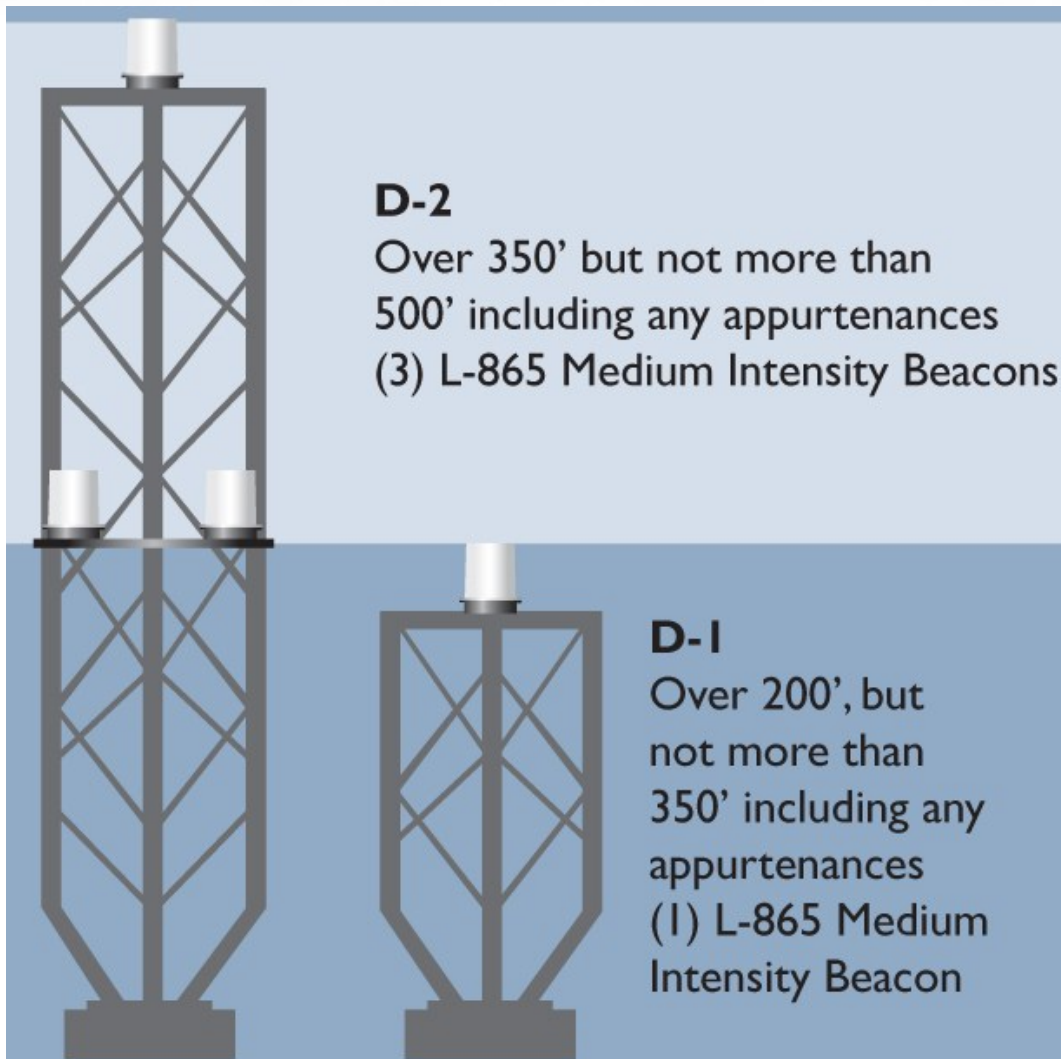
[www.flashtechology.com](http://www.flashtechology.com)  
Call us at 888.313.5274

SPX

# FTS 370w

VANGUARD™ LED Series - White FAA L-865  
The Next Generation in LED Obstruction Lighting

Diagram from FAA Advisory Circular AC 70/7460-1K Change 2, A1-18. The FAA determination of no hazard for these towers are: Chapters 2, 4, 6



These guidelines are for reference only. Please contact Flash for specific questions regarding obstruction marking.