

# HERE AND NOW!

March 2018

Volume 65, Issue 3



# HE IS RISEN

"WHY DO YOU SEEK THE LIVING AMONG THE DEAD?"  
INSIDE THIS ISSUE

## HOLY WEEK WORSHIP SCHEDULE

- ♦ **Palm Sunday ~ March 25th:** Palm Sunday Worship Service will be at 10:00 a.m. We will celebrate it with a Children's Procession carrying palms through the Sanctuary. There will be an Easter Egg Hunt after Worship.
- ♦ **Holy Tuesday ~ March 27th:** Please join us for the Lent Adult Book Study in the Parlor at 12:00 Noon.
- ♦ **Maundy Thursday ~ March 29th:** Maundy Thursday Worship will be a Tenebrae Service and Communion at 7:00 p.m. Maundy Thursday is the night we remember Jesus washing the feet of his disciples and the last meal they shared.
- ♦ **Good Friday ~ March 30th:** Good Friday is the day we remember Jesus' crucifixion. There will be no service here at FPC Bismarck. Please use this day for prayer and reflection. Glencoe-Sloan will have a Good Friday Service starting at 3:00 p.m. lead by Pastor Deanna Reikow.
- ♦ **Easter Sunday ~ April 1st:** Join us for 10:00 a.m. Worship and Communion as we celebrate the resurrection of Jesus and the triumph over sin and death. Jesus is alive!



## **STEWARDSHIP COMMITTEE ~ PER-CAPITA**



Each year the Presbytery, Synod and General Assembly assess our church a Per Capita fee for every member of the congregation. The Per Capita fees are essentially dues for the services received from these governing bodies of the Presbyterian Church.

For 2018, First Presbyterian's assessment is **\$44.00** per member, which the church pays regardless of how much is collected. Please take **\$44.00** times the number of church members in your family and send that amount in a separate check made out to First Presbyterian Church, with "Per Capita" in the memo line.

The difference between what First Presbyterian owes and what is collected from the congregation will come out of the church budget. Thank you for taking care of this so that the church can take care of its many other budget needs.



## **ADMINISTRATIVE AND PERSONNEL COMMITTEE**

The Administrative and Personnel Committee is working with and supporting the office staff in the absence of a pastor. We are very fortunate to have Charee and Vickie in the office as the main contacts. Church office staff meetings continue on a weekly basis. I have the pleasure of attending those meetings. The focus is on sharing with each other regarding the life of the church and what needs to be accomplished through the week. In the absence of a pastor, Charee is responsible for lining up pulpit supply each and every Sunday. That is not an easy task. Although we are fortunate to have Marv and others that are willing to "step up to the plate", it is like trying to find a good teacher substitute in a school system. Charee and others make sure that Sunday services continue to provide a meaningful worship experience for all.

Dale Hoerauf  
Chair, Admin. & Personnel Committee



## **IRISH SODA BREAD AND TEA SUNDAY**

On Sunday, March 11th, following the Worship Service, the Membership Committee would like to extend hospitality to all by encouraging your presence in the Parlor during coffee time. Besides offering coffee as usual, the Committee will be providing Irish soda bread, jams, and tea. A special invitation is extended to new members and visitors so we can get to know each other better. It will be an opportunity for everyone to linger over conversation. Please join us!





## **BECOMING “WE”**



The anticipation of coming to Bismarck is nothing but pure joy. The little time that I have spent with all of you has been full of bright hope; First Pres really knows how to extend hospitality that makes one feel welcomed—more than welcomed, invited to be family.

I really value that. Church is the family one deliberately chooses. (I know, I should be theologically careful—yes, God chooses us and grafts us into the universal family that has been elected by his grace and we don’t get to dictate the other people he chooses to include!) - but the nature of our lives today allows us a great deal of freedom to pick and choose the local setting in which we worship. These days, anybody can slip in and out of a church anonymously, or “shop around” until they find a place that fits their lifestyle. (If they are so inclined, they could even stream a worship service into their living room via the internet, although such isolation lacks the most important element for any place called church—other people!) It is only natural that people desire a place in which they feel loved, understood, nurtured, and propelled to mission.

It is my firm conviction that the church that does the will of God is the church that offers individuals the opportunity to embrace and be embraced by an authentic sense of belonging and family. We need each other to experience God. There is nothing more precious than a church home that is dedicated to the word “we” - where individuals are recognized as unique and precious, yet still are bonded together as one whole to do the work of Christ. Ephesians 2 explains that God is in the “we-making” business:

*“[God’s]...purpose was to create in himself one new humanity out of the two, thus making peace, and in one body to reconcile both of them to God through the cross, by which he put to death their hostility. He came and preached peace to you who were far away and peace to those who were near. For through him we both have access to the Father by one Spirit. Consequently, you are no longer foreigners and strangers, but fellow citizens with God’s people and also members of his household...”*

So, what I look forward to is becoming “we” with you, my chosen family—to meeting and knowing each person, to bonding with the dreams, longings and fears that make us who we are, and discovering together what we become as God works through Holy Spirit to make us true family. I have great faith that there is a unique purpose for the “we” that we will become together...my hopes are with you all—it cannot begin soon enough.

Blessings to you all,

Pastor Leanne





## **PAPER TOWELS NEEDED**



Your Outreach Committee is very thankful for the gifts the Child Care Center has received! We as a Church Family have nurtured and supported our child care mission to our community!

March is the month Outreach has chosen to put special emphases on one item the First Presbyterian Church's Child Care Center needs daily, **PAPER TOWELS**! We know that messes need paper towels in our homes, if we think of the need in a setting with 10 or 12 children we can imagine how important paper towels would be. So that's the vision we are asking you to respond to.

Please consider donating paper towels in March. They will be an awesome gift which will help support the CCC budget! Thanks so much!

Outreach is still searching for new members. It's a wonderful and necessary committee, please consider joining us. Talk to any Outreach Committee member about what we are up to and tell us about your interest in serving.

## **THANK YOU!**

I can't thank this congregation enough for the great support during my maternity leave, and the gracious welcome back Signe and I have received. I am incredibly thankful for our youth volunteer leaders and interns, and the Christian Education Committee. We are a very lucky congregation with the wonderful work Charee and Vickie do in the front office, and I am ever so thankful for them. An extra special thanks to all the wonderful ladies who organized the Baby Shower Tea Party, and especially to all those who were able to attend! We are a lucky family to feel so much love within this church, and we are ever so thankful!

Ashley, Geoff, & Signe Greenwood



## **SCHOLARSHIP COMMITTEE**

The Scholarship Committee of First Presbyterian Church is pleased to announce the availability of a limited number of scholarships for our church community. To be eligible for a scholarship, the candidate must be an active member of First Presbyterian Church of Bismarck or must have been an active participant in the life of the church at least three years. These scholarships can be used for any level of study beyond high school. Maximum eligibility for scholarships is four years; those years do not have to be consecutive. Graduate students are eligible for these scholarships provided that the four year maximum has not been reached. Applications are available in the Narthex or for download from the front page of the church website at [www.fpcbismarck.com](http://www.fpcbismarck.com). The application deadline is **May 14th, 2018**.



# ONE GREAT HOUR OF SHARING



Around the world, people lack access to food, clean water, sanitation, education, and opportunity. Each gift to *One Great Hour of Sharing* (OGHS) serves to help change the lives of people in these challenging situations. The Offering provides us a way to share God's love with our neighbors in need.

One Great Hour of Sharing, received during the season of Lent, makes a difference in the world through three impactful programs: Presbyterian Disaster Assistance, the Presbyterian Hunger Program, and the Self-Development of People Program.

Presbyterian Disaster Assistance works within communities as they recover and find hope after the devastation of natural or human-caused disasters. The Presbyterian Hunger Program takes action to alleviate hunger and its systemic causes, and helps create access to healthy food for entire communities. Self-Development of People partners with people and communities to provide tools for development and education. This serves to alleviate poverty, oppression, and injustice.

This year, First Presbyterian Church will be collecting the One Great Hour of Sharing offering during the worship service on **Sunday, March 25th, 2018**. Please join Christians all across the country in opening their hearts to witness tangibly to the abundant love of God through One Great Hour of Sharing.



## EASTER MEMORIALS (Gift of Giving)

Each Easter we offer the opportunity to give memorials in memory of loved ones. Donations from Easter Memorials are directed to the Deacon's *Gift of Giving* program, which supports the work of the Deacons and provides assistance to people in need. If you would like to make a donation in memory of a loved one, please contact the church office before Friday, March 23rd, 2018 to provide the information shown below. Your information may be provided by email to [firstpresbyterian@fpcbismarck](mailto:firstpresbyterian@fpcbismarck), phone call to 223-6091, or a note left at the front desk.

In Memory of: \_\_\_\_\_

Given by: \_\_\_\_\_

Donation Amount: \_\_\_\_\_

Donations should be made in cash or check to the church office. Please make checks payable to "First Presbyterian Church" (or "FPC") and indicate "Gift of Giving" on the memo line. All memorials will be listed, without donation amounts, in the Easter Sunday bulletin.

## PRAYER CHAIN

A prayer chain provides the power and strength of collective prayer for those in need. If you would like to join the prayer chain, or have a prayer need, please contact:

Nanc Skaret at

[skaret@bis.midco.net](mailto:skaret@bis.midco.net)

or 258-4703

You may also call the church office at 223-6091



## **ECO-PALM SUNDAY**



*“They took branches of palm trees and went out to meet him, shouting, “Hosanna! Blessed is the one who comes in the name of the Lord—the King of Israel!” ~ John 12:12-13*

To celebrate Palm Sunday, our congregation partnered with the Presbyterian Hunger Program to use Eco-Palms—branches truly worthy of celebration. Usually, palms are harvested in rainforests that are critical habitats for migrating birds. The more fronds harvesters cut, the more income they generate, which results in over-harvesting and threatens the rainforest. Middlemen transport the palms out of communities for processing where more than half of the palms are discarded because of poor quality.

Eco-Palm harvesters, however, gather only quality palm fronds in a way that allows the plant to keep growing. The communities process and package the palms instead of selling to middlemen, allowing them to capture more of the profits. With this money, impoverished harvesters are able to buy shoes and school uniforms for their children and can pay for basic healthcare.

These jobs also mean youth stay in their communities instead of migrating for work.

In addition, five cents of every Eco-Palm sold for Palm Sunday directly funds projects that improve the lives of all community members. This money provides scholarships for students, pays a teacher’s salary and supports elderly members of the community.

This year, we share the jubilation of Palm Sunday with the people who harvested our palms. As we wave our palms, we can truly say, “Hosanna in the Highest!”



ChurchArt Online | [www.churchart.com](http://www.churchart.com)

## **DOWNTOWN POWER LUNCH**



Your Outreach Committee is working on a new spiritual endeavor with our downtown businesses. This work is centered on our knowledge that we go to church and will **be the church** in our downtown community. Christ is the center of this journey. As a downtown church, Outreach is committed to an audience of downtown business. Our neighbors!

Wishing to share with the rest of our church family, we want to communicate the what, why and how your Outreach committee is moving toward making the **Downtown Higher Power Lunch a reality.**

**WHAT:** Our Higher Power Lunch will be a free lunch for downtown business and non-profit professionals. In addition to lunch (which will be catered) there will be a scripture-based message that is relevant to daily struggles faced in one's life. Our participants will be employers, employees or others looking to network with like-minded individuals coming together in our faith and our work. The lunches will be held on the third Wednesday of each month in our Parlor.

**WHY:** The opportunity to consider developing our Higher Power Lunch started in 2009 with the awareness of the concept. Jan Schultz brought to our attention, an article from the Fargo Forum which provided information on the FM Power Lunch of Fargo Bethel Church. This article was kept and for nine years or so, it would periodically resurface to spark the idea that we should and could provide this outreach with our downtown businesses. Being a downtown church and with clear Divine intervention we began the journey in January to establishing this Christ centered outreach endeavor.

**HOW:** A subcommittee of Outreach was formed. Our members of this planning and implementation team are: David Massey, Kathy Mayer, Ella Gutzke, Joe Satrom, Allen Hoberg, Jan Schultz and Gladys Cairns. This team is in the process of putting the pieces together. A grant was written to the Northern Plains Presbytery women resulting in receiving \$1,000 to pay for lunches and fund our start up. We have visited the FM Power Lunch and learned a lot and were renewed in our commitment to bring our Higher Power Lunch to reality.

Any questions you may have please direct those to any of our team members. Next month we will provide additional information on our progress, keeping you informed of how, start date and what we are doing. Any prayers offered for the success of this outreach activity would be a blessing. Thanks!



## **OUTREACH PROMOTING VOLUNTEERING**



Our Outreach Committee continues to work on our 2018 work plan. This is the second month of our highlighting volunteer activities which may be associated with our work plan. Last month we talked about Ministry on the Margins, this month our focus is on the Heaven Helpers Soup Café. Both Ministry on the Margins and the Soup Café are recipients of Outreach ministry funds.

You may remember the Soup Café on Memorial Highway near our Church. In 2015, the lease was ended and so no Soup Café since May of that year. With Divine intervention, after some very hard work by Mark and Mary Meyers with a lot of community support, the Heaven Helpers Soup Café located at 220 N 23rd Street opened in January of this year. The services are volunteer based.

The Café “not only has homemade soups, sandwiches and desert bar, but also a salad bar for our patrons. We will have private showers and laundry facilities for the homeless along with a computer area to find work and a fellowship area where they can relax and visit. The food will be free but for the showers, laundry and computers the patrons will have to use ‘Soup Café Bucks’. To earn these Soup Café Bucks they can volunteer washing dishes, cleaning or serving food. We want to offer people a hand up and not just a hand out.”

Perhaps you would like to know more about this Christ centered service by visiting their web page <https://www.soupcafe.org> or their Facebook page at Heaven Helpers Soup Café. You will find lots of examples of volunteers doing Matthew 25:40 work. In fact, a trip to their Facebook page will provide some warm loving feelings.

Volunteering at the Soup Café is made easy by being able to volunteer via the website. If you go to [www.soupcafe.org](http://www.soupcafe.org), click on “Volunteer” at the top of the page and you will get a drop down which allows you to volunteer for a two-hour shift on a day you pick or several day slots. Have questions, feel free to talk to our Outreach chair. Your Outreach Committee would love to know your thoughts of this Christ centered helpful service. Thanks for your interest!



## **SAVE THE DATE!**

We will be hosting a Tie Blanket Party this year on

**Sunday, April 15th**  
immediately following Worship.

Pizza will be provided.

More information to follow in the April Here and Now!





## **FPC CHILD CARE CENTER**



With Spring just around the corner, the FPCCC staff and children are excited to be back outdoors. Thanks to the generous donations made toward the Outdoor Classroom in 2017, we will be enjoying the cascading water table, the over-sized blocks and the wheelbarrows.

In addition to those fun items, we will be able to add two new sandboxes, along with dustless sand and new toys for the sandboxes. These particular items were made possible through a generous donation made by a former child care center family.

With permission having been given, I would like to share their story in the mother's own words, as written in her e-mail, but first, here is how things started...in early November of last year, I received a very simple e-mail asking if the FPCCC is a non-profit program and would a donation be tax deductible. I responded, sharing the requested information. I also asked the woman how she had heard about the fundraiser and was she a church member because I didn't recognize her name. Following is her response:

*Shawn,*

*Thank you for your kind e-mails. Back in 1998, I was a single mom, who just had a baby girl. I was a young mom with very little money and fairly new to the Bismarck area. Fortunately, for us, I got "bumped" into an opening at the daycare.*

*My daughter first attended your program when she was 3 weeks old. She attended the daycare until she was approximately 6 months old. Then we moved to North Carolina. This was a rare opportunity and your center was a blessing to us.*

*There have been times over the years that I have thought of the center. I am sure these are promptings by the Holy Spirit. (And you know you have to respond when the Holy Spirit is prompting you to do something!)*

*My daughter is now attending college on the East Coast and we couldn't be more proud of her. She is double-majoring in Engineering.*

*I want to "Thank You" from the bottom of my heart for helping young mothers to build a family, but also for showing the God's love.*

*Now that I am older, I am truly thankful for those that helped us when I was so young. It is an important mission of the church...you want the young people to feel Jesus' love.*

*I will get you a check in the mail shortly.*

*And Shawn, the Church is super lucky to have you there for so long. You have seen many families from all different situations and backgrounds. You are a glue to that center and what a blessing your program is to the community. Thank you for all you have done and thank you for touching so many families' lives. You are awesome!*

*Thank you, again,*

*Heidi Halmans*





# CHRISTIAN EDUCATION



## Youth Summer Trip-for ALL AGES!! Presbyterian Bible Camp: Clearwater Forest Sunday, July 22nd—Sunday, July 28th

Our youth who attend our retreats keep asking for opportunities lasting longer than a weekend. Well...ask and you shall receive! We will be taking elementary through high school youth to the Presbyterian Bible Camp "Clearwater Forest" Sunday, July 22nd through Sunday, July 28th for a full week of Bible Camp this summer!

Camp is available for youth currently in 2nd—12th grade. Parents are welcome—and encouraged—to travel to Clearwater with us either Sunday to drop off and pick up our youth.

Clearwater Forest is right on the lake and packed with FUN! Youth will spend the week enjoying all the traditional activities of camp. There is archery available, kayaking and canoeing; kids will worship with their friends, play hilarious games, create fun crafts and make life-long memories.

The cost of camp is \$451.00, and we as a church hope to cover 2/3 of that cost for our children and youth. We hope to fundraise to help cover the cost, but before we can do that, we need to know how many are interested! Please check in with Ashley if you have any questions about this opportunity, or are interested in signing up your 2nd—12th grader to attend.

Feel free to look over the Clearwater Forest website: [www.clearwaterforest.org](http://www.clearwaterforest.org) for more information. We're very excited to offer this opportunity to our children and youth of all ages, and hope you will consider this awesome opportunity for your family this summer!

*Church Members: keep an eye out in the April Newsletter for an opportunity to help send our kids to camp this summer!*



## Christian Ed. (continued)



***Palm Sunday Fun-day, March 25th!***

**Processional at Worship, Story and Crafts during Sunday School and an Easter Egg Hunt following Worship!**



Kids are welcome to meet in the Chapel before Palm Sunday worship to receive palms and process into 10:00 a.m. worship together. Adults are welcome to walk with their kids, or will be joined in the Sanctuary for Worship.

Kids will enjoy a craft, snack, and story during Sunday School. Parents are welcome to join us downstairs after worship where kids of all ages will enjoy a fun Easter Egg Hunt!



### ***Candy Donations Needed!***

We are in need of small, wrapped candy that will fit in an Easter Egg! Please drop off any donations in the front office by Wednesday, March 21st.







## **NURSE'S NOTES...**



### ***Happy Lent Season Everyone!!***

I thought I would share a riddle with you...How does an Easter Bunny stay fit? He egg...ercises... Just a little humor for the month! So come join our fun group every Monday and Thursday at 10:00 a.m. in the Parlor for Strengthening Exercises!!

March is also National Nutrition Month, so in honor of this special awareness, I have asked a First Presbyterian Church member, Karen Ehrens, to present a free class on Nutrition. This class will be **March 8th in the Parlor at 5:30 p.m.**

*“Go Further With Food: Resources and Ideas to Eat More and Waste Less Food”*

Let's get together during March's National Nutrition Month to share ideas for getting the most from our food—for our health and for our care of creation. Learn which foods are recommended to reduce risk for chronic illnesses like cancer, heart disease and diabetes. Share ideas for eating on a budget and ways to waste less food.

Light snacks will be shared.

Class to be offered by Karen Ehrens, RD, LRD, Health and Nutrition Consultant and Advocate.

\* \* \* \* \*

**March** is also Multiple Sclerosis Awareness Month: Multiple Sclerosis (or MS) is a chronic, often disabling disease that attacks the central nervous system (CNS), which is made up of the brain, spinal cord and optic nerves. Symptoms may be mild, such as numbness in the limbs, or severe, such as paralysis or loss of vision. The progress, severity, and specific symptoms of MS are unpredictable and vary from one person to another. Today, new treatments and advances are giving new hope to people affected by the disease.

MS is a disease that involves an immune system attack against the central nervous system (brain, spinal cord, and optic nerves). The disease is thought to be triggered in a genetically susceptible individual by a combination of one or more environmental factors. Although MS is thought by some scientists to be an autoimmune disease, others disagree strongly because the specific target of the immune attack in MS has not yet been identified. For this reason, MS is referred to as an immune-mediated disease.

As part of the immune attack on the central nervous system, myelin (the fatty substance that surrounds and protects the nerve fibers in the central nervous system) is damaged, as well as the nerve fibers themselves. The damaged myelin forms scar tissue (sclerosis), which gives the disease its name. When any part of the myelin sheath or nerve fiber is damaged or destroyed, nerve impulses traveling to and from the brain and spinal cord are distorted or interrupted, producing the variety of symptoms that can occur.

Most people with MS learn to cope with the disease and continue to lead satisfying, productive lives.

There are ten warning symptoms for Multiple Sclerosis:

- 1) Numbness: Constant tingling and numbness in the face and extremities especially the legs, arms and fingers.
- 2) Exhaustion: Unexplained muscle fatigue and muscle weakness.
- 3) Vision Problems: Vision problems are gradual including blurred vision, blind spots, vision paid, double vision, lack of contract, color loss or impaired vision. It may affect one eye or both eyes.
- 4) Loss of bowel or bladder control: Signs include frequent nighttime bathroom trips, constipation or diarrhea or incontinence.
- 5) Memory loss



## **NURSE'S NOTES... (continued)**



- 6) Jerky and spontaneous muscle spasms
- 7) Sexual dysfunction
- 8) Dizziness or lightheadedness
- 9) Seizures
- 10) Depression and mood disorders

There is no cure for multiple sclerosis. Treatment typically focuses on speeding recovery from attacks, slowing the progression of the disease and managing MS symptoms. Some people have such mild symptoms that no treatment is necessary.

Treatments for MS signs and symptoms:

- 1) Physical Therapy: A physical or occupational therapist can teach you stretching and strengthening exercises and show you how to use devices to make it easier to perform daily tasks. Physical therapy can build muscle strength and ease some of the symptoms of MS.
  - \* Physical therapy along with the use of a mobility aid when necessary can also help manage leg weakness and other gait problems often associated with MS.
- 2) Muscle Relaxants: You may experience painful or uncontrollable muscle stiffness or spasms, particularly in your legs. Muscle relaxants may help. Ask your doctor about what medication would work for you.
- 3) Medications to reduce fatigue: Other medications also may be prescribed for depression, pain, sexual dysfunction, and bladder or bowel problems that are associated with MS. Consult with your medical provider.

Coping and support:

Living with any chronic illness can be difficult. To manage the stress of living with MS, consider these suggestions:

- 1) Maintain normal daily activities as best you can.
- 2) Stay connected to friends and family.
- 3) Continue to pursue hobbies that you enjoy and are able to do.
- 4) Contact a support group, for yourself or for family members.
- 5) Discuss your feelings and concerns about living with MS with your doctor or a counselor.

There is a MS support group in Bismarck that meets on the 2nd Tuesday of each month at the Woodhouse Restaurant from 7:00 p.m. to 8:30 p.m. It is a laid back meeting and a time for socializing with people with MS and their families.



# Session Highlights

February 2018

## Session Highlights February 27th, 2018

### MODERATOR

Kevin Kaufmann, currently serving the Wilton Presbyterian Church will be the Moderator of Session until Pastor Simmons arrives. Kevin is a Pod Leader for the Congregational Pod of Presbytery.

### GUESTS

Mark Zimmerman and Tina Fleck gave an update on the activities for Boy Scout Troop #6, the oldest troop in ND. The troop hopes to bring in girls and would like to have a room where they could have flags and items displayed. Matt Engel and Kris Ronningen will meet with the Scout leaders to see what might work. Kris will also be a Session liaison with the Troop.

### CLERK'S REPORT

Mary, Bruce and Laura Wendt were reinstated to active membership. Brad Hoge was removed from the membership roll.

### CHILD CARE CENTER BOARD

Ella Gutzke discussed new policies developed with the help of Parish Nurse, Wanona Goetz, and Administrative and Personnel Committee. Session approved the new policies regarding biting, bed bugs, head lice, breast milk, and blood borne pathogens. Ella reported that the CCC Board will be looking for ways to adjust their 2018 budget. As Chair of CCC Board, Ella will report quarterly to Session.

### NEW PASTOR

To help Rev. Leanne Simmons secure housing in advance of her arrival, Session approved a no-interest loan to cover costs of \$1,350 in monthly rent. The pastor will repay the amount in equal monthly amounts withheld from her salary.

### FINANCIAL REPORTS

Total Income YTD Actual	\$55,455	Budget	\$34,208
Total Expense YTD Actual	\$42,188	Budget	\$47,908
NET Income	\$16,267	Budget	-\$13,700
General Fund unrestricted	\$200,114.56		

### COMMITTEE REPORTS (taken from minutes)

**Christian Education**—Cindy Cross is a new member of the committee. Children/youth will be encouraged to attend Clearwater Forest Camp, July 22-28 with the cost of \$450 per person covered 1/3 from CE Dedicated Account, 1/3 parents and 1/3 fundraising. Church members will be encouraged to help sponsor a child as well as to volunteer transportation.

**Membership**—The date for the Irish Soda Bread and Tea will be March 11th following service.

# Session Highlights (cont.)

February 2018

**Outreach**—The Downtown Higher Power Lunch will begin the third Wednesday of June rather than in April. The committee is seeking new members.

**Stewardship**—Individual congregation Per Capita payments are ahead of last year. Session approved the committee roster of members.

**Worship and Music**—Jared Calvert is a new member of the committee. Session approved the request to have FPC host a “simple gathering” following the University of Jamestown Choir Concert March 4, 4:00 p.m.

**Property and Equipment**—There will be a discussion concerning security enhancement by possibly locking the east and Child Care Center doors about 10 minutes after worship service begins.

## **PRESBYTERY COMMISSIONERS**

Session elected Jim Skaret, Gladys Cairns and Shari Orser to be Commissioners to the April 13th Presbytery meeting in Casselton and to the fall meeting in Mandan.

Alice Nix, Clerk of Session



## **BRAVE THE SHAVE ~ WILL YOU HELP?**



**“Brave the Shave”** is back! It is the region’s largest childhood cancer fundraiser on a mission to conquer kid’s cancer. Since 2008, Brave the Shave has raised more than \$2.2 million for childhood cancer and more than 2,200 people have shaved their heads in solidarity of kids with cancer.

While the campaign continues to grow and evolve, the reason for Brave the Shave will remain the same = It’s for the kids.

**Shawn Stettner, CCC Director , and Vanessa Hein, CCC Assistant Director, are “Braving the Shave.”** Shawn and Vanessa have joined Al Peterson’s Team, “Cooper’s Crew”, to raise funds to support all the other families and children going through cancer treatment and will shave their heads to help conquer kids’ cancer.

*“Al and Tiffany Peterson’s son, Cooper David Peterson, AKA Super Cooper, is a vibrant and energetic three year old boy with a smile that can melt your heart. His battles began in February 2015 when he was diagnosed with Neurofibromatosis Type 1 and Optic Gliomas (benign tumors on the optic nerves). After a MRI showed proof of tumors, they immediately drove to the University of Minnesota Masonic Children’s hospital for an appointment with one of the top NF specialists in the country for consultation and treatment. They also learned that the damage to the optic nerves caused by the Gliomas was permanent and Cooper is blind. They spent the next ten months taking Cooper for weekly chemotherapy treatments to try to shrink the tumors. They also had MRIs and appointments in Minneapolis every three months. It was at the appointment in December 2015 that they discovered he developed hydrocephalus and needed emergent surgery to drain the fluid and stop the swelling of his brain. While conducting the surgery, they had to postpone the shunting because of excess bleeding. They installed a temporary shunt and Cooper spent a couple of days in the PICU while the fluid drained enough to continue the shunts surgery. They also took a biopsy which turned out our worse fears; Cooper had developed Diffuse Fibrillary Astrocytoma, a type of cancerous tumor that spreads into brain tissue rather than growing on it. Surgery is not an option. These tumors have shown up in the Thalamus and Hypothalamus in the brain and possibly in other tissue as well. Cooper has had numerous shunt surgeries to drain his brain fluids.*

*“Cooper has undergone months of chemotherapy and was part of an international drug trial at the University of Minnesota. Along with his multiple brain surgeries, he will start a new chemotherapy treatment in June. Most recently, test results showed that the tumor is taking up less contrast and the areas of contrast look smaller. Cooper will continue on this course of chemo until his counts don’t recover to an acceptable level in time for the next round. At that point, they will know his body can no longer handle this chemo protocol.*

*“Super Cooper continues to amaze us. With all he goes through, with the pokes and prods and long car rides and having to take medication daily, he still gives everyone he meets a big smile and a giggle.*

*“As a parent going through the trauma of childhood cancer, just the reassurance of knowing that an organization like Brave the Shave is there to support and help you out is comforting. Please consider supporting our fundraising efforts.”*

Shawn and Vanessa each hope to raise \$500 to help conquer kid’s cancer. Perhaps you would like to help them reach this admiral goal. Shawn and Vanessa can be found on Cooper’s Crew at <https://donate.bravetheshave.coop/team/100719>. The Brave the Shave Flagship Event will take place **Saturday, April 14th, 2018** at the YMCA. The event starts at 1:30 p.m. and the doors will open at 1:00 p.m. Any amount of donation would be welcome!





## **This Month's Anniversaries & Birthdays**

### **BIRTHDAYS**

### **MARCH**

Eleanor Sand	2nd
Edith Weber	2nd
Olivia Bachmeier	3rd
Drew Henriksen	3rd
Becky Murphy	3rd
Ethan Lannoye	3rd
Kim Hocking	3rd
Dawn Henriksen	4th
Johan Mahlum	5th
Duane Ehrens	6th
Zach Strombeck	8th
Mary Hoberg	10th
Darlene Kelley	11th
John Bjornson	11th
Doris Doolittle	12th
Larry Larson	12th
Otto Reile	12th
Kathleen Gappert	12th
Daphne Cornell	13th
Mary Ingstad	13th
Juanita Hocking	15th
Jim Rambo	15th
Don Bigwood	16th
Judy Lentz	16th
Connor Svihovec	17th
Carol Zimmerman	17th
Alice Halling	19th
Larry Hoge	19th
Susan Schafer	21st
David Poffenberger	26th

### **BIRTHDAYS**

### **MARCH**

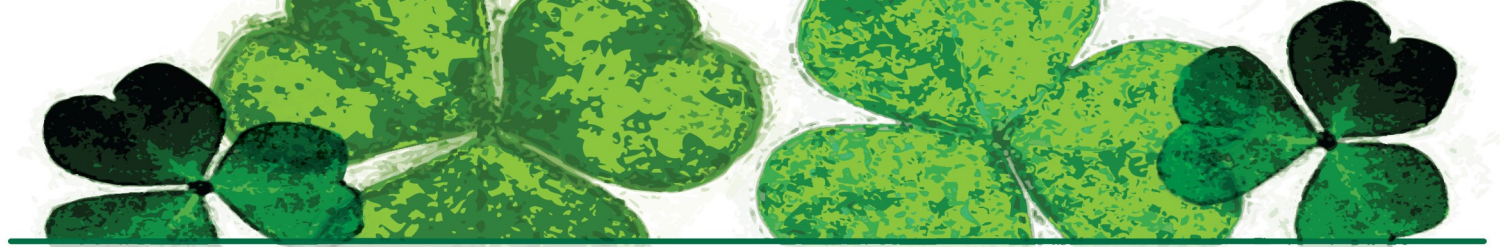
David Poffenberger	26th
Heather Davis	27th
Sandy Westerlind	30th
Karmen Svihovec	31st



### **ANNIVERSARIES**

<i>Will &amp; Ruth Beachey</i>	<i>Mar. 10th</i>
<i>Keith &amp; Mary Magnusson</i>	<i>Mar. 10th</i>
<i>Fred &amp; Pam Helbling</i>	<i>Mar. 18th</i>
<i>Steve and Laura Adair</i>	<i>Mar. 20th</i>
<i>Dale &amp; Lael Hoerauf</i>	<i>Mar. 22nd</i>

*All birthdays and anniversaries are taken from the church's membership database. If we made a mistake, or missed you or a loved one, we apologize and ask that you please let us know so we can update our system. If you do not want your birthday listed in a bulletin or newsletter, please let us know that as well. Thank you!*



# MARCH

Sunday	Monday	Tuesday	Wednesday	Thursday	Friday	Saturday
<b>** Please be advised...there are outside groups that meet at the Church throughout the week/weekend THAT ARE NOT ON THIS SCHEDULE! If you have questions regarding room availability, please call the office at 223-6091 **</b>				<b>1</b> <b>10:00am</b> Senior Exercise Class (Parlor) <b>12:00pm</b> Stewardship Comm. (Conf. Rm) <b>6:00pm</b> Membership Comm. (Conf. Rm) <b>6:00pm</b> Outreach Comm. (Parlor)	<b>2</b>	<b>3</b> <b>8:30am</b> Circle (Parlor) <b>9:00am</b> Yoga (202)
<b>4</b> <b>10:00am</b> Worship <b>10:30am</b> Sunday School <b>4:00pm</b> University of Jamestown Choir Concert (Sanctuary)	<b>5</b> <b>10:00am</b> Senior Exercise Class (Parlor) <b>4:30pm-7:00pm</b> Suzuki Music School <b>7:00pm</b> Boy Scouts (Room 202) <b>7:00pm</b> Christian Ed. Comm. (Conf. Rm)	<b>6</b> <b>12:00pm</b> Lenten Book Study (Parlor) <b>5:15pm-7:00pm</b> Suzuki Music School <b>5:30pm</b> Prop. & Equip. Comm. (201) <b>5:30pm</b> Yoga (202)	<b>7</b> <b>5:45pm</b> PAC/PresbyTeens <b>6:30pm</b> Westminster Chimes <b>7:30pm</b> Chancel Choir	<b>8</b> <b>10:00am</b> Senior Exercise Class (Parlor) <b>5:30pm</b> Food Presentation (Parlor)		<b>10</b> <b>9:00am</b> Yoga (202)
<b>11</b> <b>10:00am</b> Worship <b>10:30am</b> Sunday School <b>11:00am</b> Irish Tea & Soda Bread Fellowship (Parlor)	<b>12</b> <b>10:00am</b> Senior Exercise Class (Parlor) <b>4:30pm-7:00pm</b> Suzuki Music School <b>5:00pm</b> Admin & Personnel (Parlor) <b>5:30pm</b> Worship & Music Comm. (Conf. Rm) <b>7:00pm</b> Boy Scouts (202)	<b>13</b> <b>12:00pm</b> Lenten Book Study (Parlor) <b>5:30pm</b> Suzuki Music School <b>5:30pm</b> CCC Board (Conf. Rm)	<b>14</b> <b>12:00pm</b> Munch & Mingle (Ramkota) <b>5:45pm</b> PAC/PresbyTeens <b>6:30pm</b> Westminster Chimes <b>7:30pm</b> Chancel Choir	<b>15</b> <b>10:00am</b> Senior Exercise Class (Parlor) <b>7:00pm</b> Deacons (Parlor)	<b>16</b>	<b>17</b>
<b>18</b> <b>9:00am</b> Blood Pressure Clinic (Conf. Rm.) <b>10:00am</b> Worship <b>10:30am</b> Sunday School	<b>19</b> <b>10:00am</b> Senior Exercise Class (Parlor) <b>12:00pm</b> Business & Finance (Conf. Rm.) <b>4:30pm-7:00pm</b> Suzuki Music School <b>7:00pm</b> Boy Scouts (Room 202)	<b>20</b> <b>12:00pm</b> Lenten Book Study (Parlor) <b>5:15pm-7:00pm</b> Suzuki Music School <b>7:00pm</b> Bridge (Parlor)	<b>21</b> <b>5:45pm</b> PAC/PresbyTeens <b>6:30pm</b> Westminster Chimes <b>7:30pm</b> Chancel Choir	<b>22</b> <b>10:00am</b> Senior Exercise Class (Parlor)	<b>23</b>	<b>24</b>
<b>25</b> <b>10:00am</b> Palm Sunday Worship <b>10:30am</b> Sunday School	<b>26</b> <b>10:00am</b> Senior Exercise Class (Parlor) <b>4:30pm-7:00pm</b> Suzuki Music School <b>7:00pm</b> Boy Scouts (Room 202)	<b>27</b> <b>12:00pm</b> Lenten Book Study (Parlor) <b>5:15pm-7:00pm</b> Suzuki Music School <b>6:00pm</b> Session (Parlor)	<b>28</b> <b>5:30pm</b> PAC/PresbyTeens <b>7:30pm</b> Chancel Choir	<b>29</b> <b>10:00am</b> Senior Exercise Class (Parlor) <b>7:00pm</b> Maundy Thursday Service with Communion	<b>30</b>	<b>31</b>



## **March Fun Facts**

- ♦ The birthstone for March is aquamarine
- ♦ The zodiac signs for March are Aries (3/21-4/19) and Pisces (2/19-3/20)
- ♦ The birth flower for March is daffodil
- ♦ American Red Cross Month
- ♦ Fire Prevention Month
- ♦ Women's History Month
- ♦ National Reading Day
- ♦ Saint David's Day
- ♦ World Math's Day—the first Wednesday in March
- ♦ March 1st is the date the Nebraskans celebrate the admission of their state to the union
- ♦ March 2nd is celebrated by Texas as the anniversary of its independence from Mexico
- ♦ On March 4th, 1681, William Penn was granted Pennsylvania's royal charter
- ♦ March 25th is celebrated by people in Maryland to commemorate the arrival of the first Maryland colonists in 1634.
- ♦ March 8th—International Women's Day
- ♦ March 12th—Daylight Savings Time starts
- ♦ March 14th—Pi Day
- ♦ March 17th—Happy St. Patrick's Day
- ♦ March 19th—St. Joseph's Day
- ♦ March 22nd—World Water Day

## March Communion Servers



### COMMUNION SERVERS

**Sunday, March 4th, 2018**

Jennifer Boeckel	Shari Orser
Wendy Skager	Audre Goll
John Richter	Gail Brown
Donna Richter	Lynn Dodge
Kris Ronningen	Peggy Hoge

*Communion is available to be served at home, hospital, or nursing home to anyone who is unable to worship with the congregation. Please call church office to schedule time.*

**223-6091**

### COMMUNION SERVERS

**Maundy Thursday  
March 29th, 2018**

Dale Hoerauf	Bob Tonolli
Bob Kinnischtzke	Alice Nix

*Communion is available to be served at home, hospital, or nursing home to anyone who is unable to worship with the congregation. Please call church office to schedule time.*



### LAY READERS

**March 4th**  
*Karen Ehrens*

**March 11th**  
*Stan Halling*

**March 18th**  
*Kim Wassim*

**March 25th**  
*Ella Gutzke*

**March 29th ~ Maundy  
Thursday**  
*Volunteer Needed*



## March 2018 Usher/Greeter/Coffee Host

<b>March 4th:</b>	<b>Captain:</b> Tedd Gutzke <b>Ushers:</b> Joe Bachmeier, Ella Gutzke, Jody Bachmeier, Bill Jensen, Vic Sonneman <b>Reception Host:</b> Emily Ehrens
<b>March 11th:</b>	<b>Captain:</b> Kathryn Brown <b>Ushers:</b> Donna Richter, John Richter, Joe Satrom, Cindy Cross, Don Cross <b>Reception Host:</b> Jan Gilchrist
<b>March 18th:</b>	<b>Captain:</b> Jennifer Boeckel <b>Ushers:</b> <i>Volunteers Needed</i> <b>Reception Host:</b> <i>Volunteer Needed</i>
<b>March 25th:</b>	<b>Captain:</b> Audre Goll <b>Ushers:</b> Joe Satrom, <i>Volunteers Needed</i> <b>Reception Host:</b> <i>Volunteer Needed</i>
<b>March 29th:</b> Maundy Thurs.	<b>Captain:</b> Peggy Hoge <b>Ushers:</b> Dave Nix, Alice Nix, <i>1 Volunteer Needed</i>



# **FAMILY NEWS**

## ***Births:***

Congratulations to Larry and Peggy Hoge on the birth of their Grandson, and Grace Hoge's Great-Grandson!

## ***Bryce David Blair***

Bryce was born on January 30th to Beth (Hoge) and Tanner Blair. Both are previous members of FPC. They live in Madison, WI and are members of Christ Presbyterian Church.

*If you have a birth, wedding, death, or other life-event announcement that you would like included in the next newsletter, please provide the necessary information to Charee in the church office at 701-223-6091 or [firstpresbyterian@fpcbismarck.com](mailto:firstpresbyterian@fpcbismarck.com).*

**First Presbyterian**  
**214 East Thayer Ave.**  
**Bismarck, ND 58501**

**Phone: 701-223-6091**

**E-mail:**

**[firstpresbyterian@fpcbismarck.com](mailto:firstpresbyterian@fpcbismarck.com)**  
**[www.fpcbismarck.com](http://www.fpcbismarck.com)**

## **Sunday Worship Schedule**

**Worship: 10:00 a.m.**

**Sunday School 10:30 am.**

## **Office Hours**

**8:00 AM—5:00 PM Monday-Friday**  
**(closed from 12:00 pm-1:00 pm Friday)**

## **Staff**

**Christian Education Director**  
***Ashley Greenwood***

**Finance Assistant**  
***Vickie Haas***

**Administrative Assistant**  
***Charee Linton***

**Parish Nurse**  
***Wanona Goetz***

**Organist/Pianist**  
***Arvy Smith***

**Choir Director**  
***Debi Rogers***

**Handbell Ensemble Director**  
***Lael Hoerauf***

**Maintenance Manager**  
***Les Hornbacher***

**Membership Services**  
***Judy Lentz***  
***Shelli Peterson***

**Child Care Center Director**  
***Shawn Stettner***

**Child Care Assistant Director**  
***Vanessa Hein***

