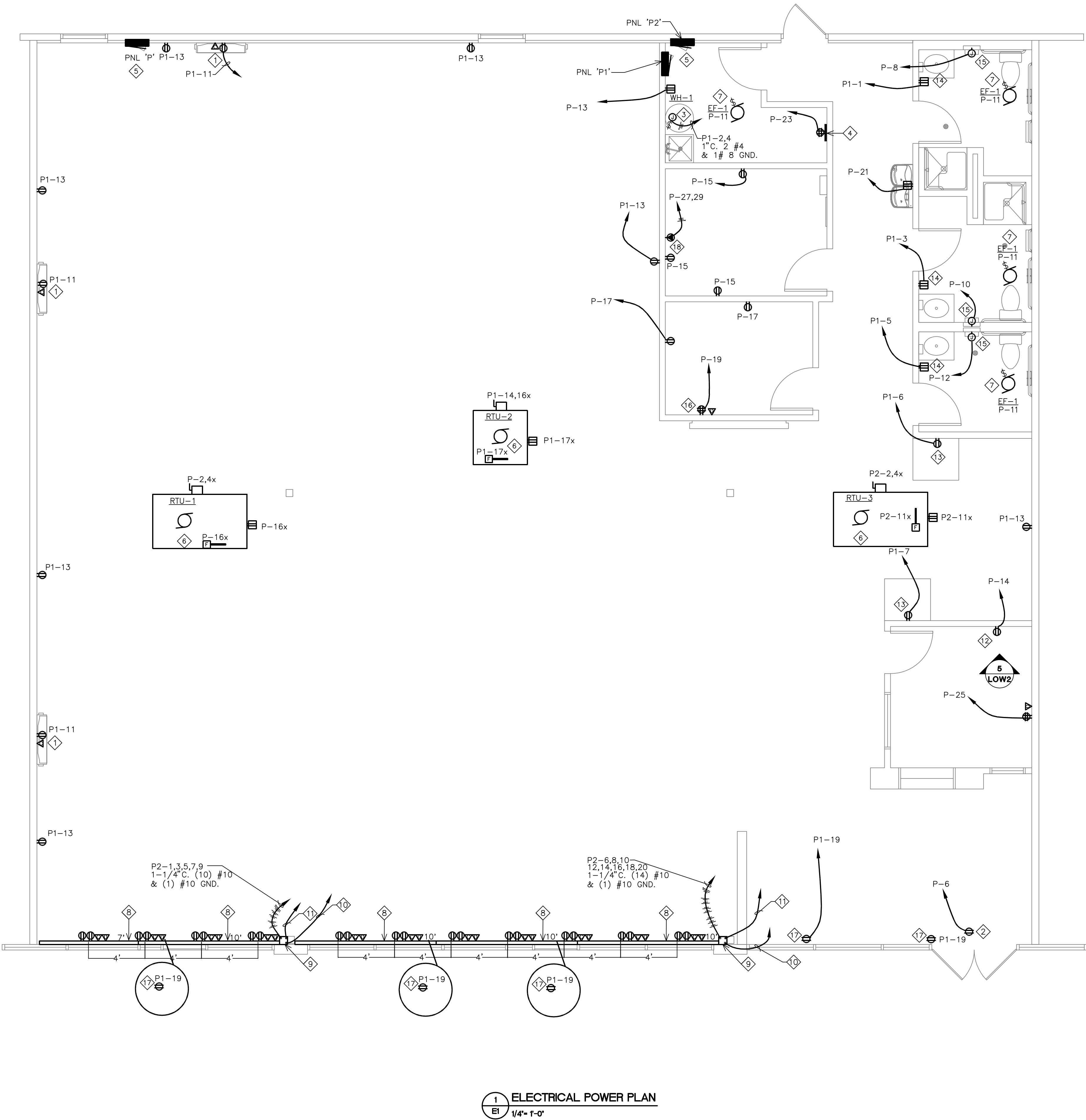


POWER PLAN KEYED NOTES

- 1
- PROVIDE POWER AND DATA OUTLETS IN WALL MOUNTED AT 9'-6" AFF FOR TELEVISIONS. EACH TV WILL REQUIRE 2 OUTLETS, ONE FOR THE TV AND ONE FOR THE FM TRANSCEIVER. OUTLET LOCATIONS ARE TO BE DETERMINED BASED ON THE FINAL CARDIO EQUIPMENT LAYOUT. COORDINATE DATA REQUIREMENTS.
- 2
- PROVIDE DUPLEX OUTLET ABOVE MEMBER ENTRANCE DOOR. THIS OUTLET WILL BE USED BY THE ELECTRONIC DOOR STRIKE AND THE ACCESS CONTROL SYSTEM. COORDINATE SECURITY REQUIREMENTS.
- 3
- NEW WATER HEATER. PROVIDE CONDUIT AND WIRE AS REQUIRED. COORDINATE WITH MECHANICAL.
- 4
- PROVIDE DEDICATED QUADRAPLEX RECEPTACLE AND CIRCUIT WITH ISOLATED GROUND FOR TELECOMMUNICATION BOARD. VERIFY SYSTEM GROUNDING AND ALL OTHER REQUIREMENTS WITH LOCAL TELEPHONE COMPANY. EXTEND 1" TELEPHONE CONDUIT WITH PULLWIRE FROM SERVICE ENTRANCE AT DEMISING WALL TO TELECOMMUNICATION BOARD. VERIFY EXACT LOCATION IN FIELD. SEE SHEET E3 FOR ANYTIME FITNESS NOTES AND DETAILS.
- 5
- NO TIME CLOCK REQUIRED. STORE OPEN 24 HOURS 365 DAYS A YEAR. SIGN VENDOR IS PROVIDING A PHOTOSENSOR FOR ON/OFF CONTROL OF SIGN.
- 6
- EXISTING RTU-1, 2, &3(208V 1PH). MAINTAIN CONNECTION TO ALL ELECTRICAL COMPONENTS. CIRCUITING SHOWN FOR REFERENCE ONLY. COORDINATE WITH MECHANICAL.
- 7
- EXHAUST FAN. CONTROL VIA GENERAL LIGHT SWITCH IN ROOM. COORDINATE WITH MECHANICAL.
- 8
- PROVIDE WIREMOLD AL5200 WITH SEPARATION OF POWER AND DATA WITH LENGTHS AND DEVICES AS SHOWN. INSTALLATION WILL ALSO REQUIRE PART#AL5246-DD FOR EACH RECEPTACLE AND DATA LOCATION. PROVIDE KEYSTONE 106 FRAME KSDP106-W OR EQUIVALENT WITH CAT5 KEYSTONE JACK AND COAXIAL F-CONNECTOR FOR EACH DATA AND COAXIAL LOCATION.
- 9
- PROVIDE POWER POLE FROM WIREMOLD TO ACCESSIBLE CEILING SPACE.
- 10
- PROVIDE HOMERUNS FOR DATA CABLE (CAT5E) FOR EXERCISE EQUIPMENT. (1) 1-1/4" CONDUIT FROM WIREMOLD UP TO ACCESSIBLE CEILING SPACE AND TO TELEPHONE BOARD.
- 11
- PROVIDE HOMERUNS FOR COAXIAL CABLE (RG6) FOR EXERCISE EQUIPMENT. (1) 1-1/4" CONDUIT FROM WIREMOLD UP TO ACCESSIBLE CEILING SPACE AND TO TELEPHONE BOARD.
- 12
- PROVIDE DEDICATED DUPLEX RECEPTACLE FOR NERVE CENTER. SEE DETAIL 5/LOW2 FOR MORE INFORMATION. VERIFY EXACT LOCATION PRIOR TO ROUGH-IN.
- 13
- PROVIDE DEDICATED RECEPTACLE ON A DEDICATED CIRCUIT FOR FUTURE VENDING MACHINE. PROVIDE A GFCI BREAKER IN PANEL.
- 14
- LOCATE RESTROOM RECEPTACLE SO TOP OF DEVICE IS LOCATED IN FIRST FULL TILE FROM THE TOP. THE TILE STOPS AT 48" A.F.F.
- 15
- PROVIDE CONNECTION FOR HAND DRYER: 120V/1PH, 1500 WATTS. PROVIDE LOCK-OFF DEVICE. PROVIDE XLERATOR MODEL NO: XL-W.
- 16
- PROVIDE QUAD FOR TRAINER'S EQUIPMENT. VERIFY EXACT REQUIREMENTS AND LOCATION PRIOR TO ROUGH-IN.
- 17
- PROVIDE RECEPTACLE FOR SHOW WINDOW PER NEC 210.62.
- 18
- PROVIDE NEMA L6-30R FOR TANNING BED. VOLTAGE SHOULD BE BETWEEN 220V TO 230V. MEASURE VOLTAGE AT THE PANEL AND HAVE MANUFACTURER OF TANNING BED SUNVISION MODEL NO: WBO-28LE2FH PROVIDE REQUIRED BUCK BOOST TRANSFORMER.

POWER GENERAL NOTES:

- A.
- THE CONTRACTOR FOR THIS WORK IS REQUIRED TO READ THE SPECIFICATIONS REVIEW DRAWINGS OF ALL DIVISIONS OF WORK AND IS RESPONSIBLE FOR THE COORDINATION OF THIS WORK AND THE WORK OF ALL SUBCONTRACTORS WITH ALL DIVISIONS OF WORK. IT IS THIS CONTRACTOR'S RESPONSIBILITY TO PROVIDE ALL SUBCONTRACTORS WITH A COMPLETE SET OF BID DOCUMENTS.
- B.
- CIRCUITING INDICATED ON PLAN IS PARTIALLY DIAGRAMMATIC FOR CLARITY. CIRCUITING SHALL BE "THRU-WIRING" WHERE AND WHENEVER POSSIBLE.
- C.
- FIELD VERIFY EXACT LOCATION AND ELECTRICAL REQUIREMENTS OF ALL HVAC EQUIPMENT WITH MECHANICAL CONTRACTOR PRIOR TO ORDERING RELATED ELECTRICAL EQUIPMENT.
- D.
- ALL RECEPTACLE CIRCUITS UP TO 100'-0" SHALL UTILIZE #12 CONDUCTORS MINIMUM. ALL RECEPTACLE CIRCUITS FROM 101'-0" TO 150'-0" IN LENGTH SHALL UTILIZE #10 CONDUCTORS MINIMUM. ALL RECEPTACLE CIRCUITS 151'-0" UP TO 250'-0" IN LENGTH SHALL UTILIZE #8 CONDUCTORS MINIMUM. CIRCUITS ABOVE 251'-0" SHALL UTILIZE #6 CONDUCTORS MINIMUM.
- E.
- ELECTRICAL CONTRACTOR SHALL MAKE ALL FINAL CONNECTIONS AS REQUIRED FOR A FULLY COMPLETE AND OPERABLE SYSTEM.
- F.
- WHERE DRYWALL CEILINGS ARE USED, THE ELECTRICAL CONTRACTOR SHALL ARRANGE CIRCUITS TO AVOID THE USE OF JUNCTION BOXES IN INACCESSIBLE LOCATIONS. THE USE OF JUNCTION BOXES ABOVE DRYWALL CEILINGS SHALL BE LIMITED TO LOCATIONS NEAR ACCESS FRAMES USED FOR DIFFUSERS AND RETURN AIR GRILLES OR ACCESS PANELS AS LOCATED ON PLANS. FIELD COORDINATE WITH TENANT'S PROJECT MANAGER PRIOR TO ROUGH-IN TO AVOID ANY CONFLICTS. JUNCTION BOXES ABOVE LAY-IN CEILINGS ARE ACCEPTABLE.
- G.
- ELECTRICAL CONTRACTOR IS RESPONSIBLE TO INQUIRE WITH THE LANDLORD'S REPRESENTATIVE ON ANY FIRE ALARM SYSTEMS IN USE AT THE TIME OF THE BID. IF THE FIRE ALARM SYSTEM IS NOT ADEQUATELY DESCRIBED ON THE DRAWINGS, THE ELECTRICAL CONTRACTOR IS RESPONSIBLE TO INFORM THE GENERAL CONTRACTOR AND INCLUDE THE COST AS A SEPARATE LINE ITEM IN THE BID. NO ADDITIONAL MONIES SHALL BE AWARDED FOR TIE-IN REQUIREMENTS TO A LANDLORD'S FIRE ALARM SYSTEM THAT IS IN EXISTENCE AT THE TIME OF THE BID, WITHOUT A SEPARATE LINE ITEM FOR THE FIRE ALARM SYSTEM AT THE TIME OF THE BID.
- H.
- INSTALL ENGRAVED BAKELITE NAMEPLATE ON SERVICE DISCONNECT SWITCH IN LANDLORD'S SWITCHGEAR WITH DEMISED PREMISES' SPACE NUMBER.
- I.
- NO HANGERS, SUPPORTS, JUNCTION BOXES, ETC. SHALL BE ATTACHED TO ROOF DECK.
- J.
- COORDINATE ALL ROOF PENETRATIONS WITH THE LANDLORD. WRITTEN PERMISSION FROM THE LANDLORD SHALL BE RECEIVED PRIOR TO ANY WORK BEING PERFORMED. ALL ROOF PENETRATIONS TO BE BY LANDLORD'S CONTRACTOR AT TENANT'S ELECTRICAL CONTRACTOR'S EXPENSE.
- K.
- ELECTRICAL CONTRACTOR IS TO FURNISH AND INSTALL TYPEWRITTEN PANEL DIRECTORIES IN ALL PANELBOARDS.
- L.
- ALL RECEPTACLES TO BE MOUNTED VERTICALLY, NOT HORIZONTALLY.
- M.
- GC IS TO REVIEW STRUCTURE BELOW OUR SPACE PRIOR TO CONSTRUCTION FOR CONDITIONS PREVENTING FLOOR PENETRATIONS AS SHOWN. OBSTRUCTIONS THAT PREVENT LAYOUT AS SHOWN SHALL BE BROUGHT TO THE ATTENTION OF THE ARCHITECT IMMEDIATELY AND PRIOR TO FRAMING.
- N.
- CONTRACTOR TO INSTALL OWNER SUPPLIED EMERGENCY 911 TELEPHONE, INCLUDING CONNECTION TO LV/TELECOMMUNICATIONS SYSTEM AND/OR DEMARCATION POINT. VERIFY LOCATION WITH OWNER.
- O.
- CONTRACTOR TO PROVIDE WIRING/CONNECTION FOR, CABLE TELEVISION, TELEPHONE, AND DATA FROM THE DEMARCATION POINTS/POINTS OF ORIGINATIONS TO THE POINTS OF USE/TERMINATIONS. THIS INCLUDES BUT IS NOT LIMITED TO THE TELEVISIONS, EXERCISE EQUIPMENT WITH BUILT-IN TELEVISIONS, 911-EMERGENCY CALL PHONE, TELEPHONES AND COMPUTERS IN OFFICES AND, IF APPLICABLE THE "FITNESS ON REQUEST" SYSTEM.
- P.
- COORDINATE COLOR OF RECEPTACLES AND COVER PLATES TO MATCH THE COLOR SCHEME PER ARCHITECTURAL DRAWINGS. SEE ARCHITECTURAL DECOR SCHEDULE FOR EXACT COLOR.



1
EI
ELECTRICAL POWER PLAN
1/4\"= 1'-0"

CONSULTANT:



DUNHAM

Dunham Associates, Inc.
50 South Sixth Street / Suite 1100
Minneapolis, Minnesota 55402-1540
PHONE 612.465.7550
FAX 612.465.7551
WEB dunhameng.com
mechanical + electrical
consulting engineering

COA # CA 2352 PE EXPIRATION - 6/30/16

CLIENT:



ANYTIME FITNESS, LLC
12181 MARGO AVE SOUTH
HASTINGS, MN 55033
PHONE: (651) 438-5000

PROJECT INFORMATION:

ANYTIME FITNESS
CROSS CREEK CENTER
3601 W MAIN ST, SUITE 145
DURANT, OK 74701

SEAL:



PROJECT NO.: 0416740-037

DRAWN BY: VB/CM

CHECKED BY: RM

ISSUE: DATE:
PERMIT SET 03-09-16

REVISION: DATE:

PROJECT LOCATION:

DURANT, OK

SHEET NUMBER / TITLE:

E1