

POWERS' PICKS \$15

Volume 8 Issue 19 November 26th-December 1st, 2020 © 2020 BP Sports, LLC

Happy Thanksgiving to You and Your Families!!!

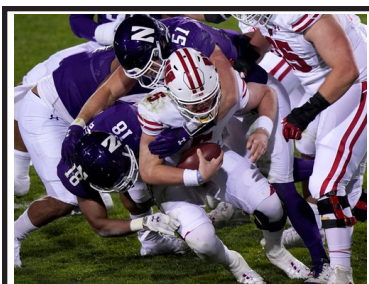
Week 13 CFB Best Bets Pg 3, Week 12 NFL Best Bets Pg 7

Week 12 News and Notes!

For those of you that are new, in this section we'll recap what happened last week specifically, the misleading finals, the key injuries, the bad beats and the line moves. We'll include most of these recaps here, therefore you don't have to waste time reading about them in my game-by-game write-ups for the upcoming week. Without further adieu, here's a run down of what happened last week in the world of CFB.

Week 12 Trends

Favorites-Dogs
Straight Up 36-8
ATS 23-21
Home-Away
Straight Up 28-16
ATS 27-17
Totals (O/U)
Over-Under 25-19
Season To-Date Favorites-Dogs
Straight Up 304-92
ATS 191-197-8
Home-Away
Straight Up 244-149
ATS 194-191-8
Totals (O/U)
Over-Under 202-188-6



No. 19 Northwestern upset No. 9 Wisconsin last week as 7-point home underdogs. The Wildcats are now overwhelming favorites to win the Big Ten West Division. Remember, that's one year removed from a 3-9 campaign last year.

Largest Favorites to Cover:

BYU (-51) vs North Alabama, 66-14
 Virginia (-38.5) vs Abilene Christian, 55-15
 Alabama (-31.5) vs Kentucky, 63-3
 Memphis (-31) vs Stephen F. Austin, 56-14
 Kent St (-25.5) vs Akron, 69-35

Biggest Money line Upsets:

Illinois +550 won 41-23 at Nebraska (+17)
 Middle Tennessee +320 won 20-17 at Troy (+11)
 Northwestern +240 won 17-7 vs Wisconsin (+7)
 Pittsburgh +200 won 47-14 vs Virginia Tech (+6.5)

ATS Notables

BYU is 7-1-1 ATS this year covering by an average of 12 ppg.
 Indiana is 5-0 ATS this year covering by an average of 12 ppg.
 Kansas is 0-6-1 ATS this year failing to cover by an average of 12 ppg.
 Penn St is 0-5 ATS this year failing to cover by an average of 15 ppg.
 Utah St is 0-4 ATS this year failing to cover by an average of 12 ppg.
 Kansas games are 6-0-1 to the OVER this year by an average of 7 ppg.
 South Alabama games are 8-1 to the UNDER this year by an average of 7 ppg.

Misleading Finals

Iowa (PK) beat Penn St 41-21. While we're not saying Penn St should have covered, it should be noted Iowa only had a 361-342 yard edge and were +3 in TO's including a 71-yard interception return TD.

Northwestern (+7) upset Wisconsin 17-7. However, the Wildcats were out-gained by more than 100 yards and benefitted from +4 in TO's.

Purdue (-2.5) lost to Minnesota 34-31. However, the Boilers had a 492-394 yard edge but missed 2 FG's and had a really bad call in the final minute (offensive pass interference) go against them that took a TD off the board.

Washington (-12) beat Arizona 44-27. However, the Huskies led 37-0 entering the 4Q and Arizona got 300 of their 331 yards in garbage time during the 4Q.

Bad Beats

Abilene Christian (+38.5) backers vs Virginia suffered one of the worst beats ever last Saturday. First, the Wildcats appeared to get the back-door cover with a TD with 1:26 left to make it 49-13 (extra point no good). Abilene then got a safety when Virginia accidentally called a trick play and had a double-pass in the end zone. However, on the final play of the game Virginia got a 84-yard interception return TD for the front-door cover.

We gave out UCF (+5.5) vs Cincinnati as our bonus pick on these pages last week and despite UCF leading outright in the 4Q, we were very fortunate to cover as Cincinnati's RB decided to take a knee at the 1-yard line instead of scoring in the final 90 seconds of the Bearcats 36-33 win.

Tulane (+5) backers were covering the entire game until Tulsa got a 96-yard interception return TD in the second overtime to win by 6. That wasn't even the worst of it as Tulsa scored a 37-yard TD on the final play of regulation just to force OT.

Injuries/COVID Cases

We had 18 games postponed or cancelled last week including Ohio at Miami, OH, Utah St at Wyoming, Georgia Tech at Miami, FL, Wake Forest at Duke, Clemson at Florida St, Navy at South Florida, Michigan St at Maryland, Charlotte at Marshall, Arizona St at Colorado, UNLV at Colorado St, Washington St at Stanford, San Jose St at Fresno St, Houston at SMU, Ole Miss at Texas A&M, Texas at Kansas, UL-Monroe at Louisiana Tech, UAB at UTEP and Central Arkansas at UL-Lafayette.

This week's **Washington/Washington St** game was cancelled due to positive cases at Washington St.

This week's **San Diego St/Fresno St** game was cancelled due to positive cases at Fresno St.

This week's **Southern Miss/UAB** game was cancelled.

This week's **Arkansas/Missouri** game was postponed due to COVID issues at Arkansas.

This week's **Western Kentucky/Charlotte** game was moved to Tuesday, December 1st. This week's **Louisiana Tech/FIU** game was cancelled due to FIU not having enough healthy players at a position.

This week's **Utah/Arizona St** game was moved to Sunday, November 29th.

This week's **Tennessee/Vanderbilt** game was postponed.

With both of their games cancelled, Utah will play at Washington on Saturday.

Kansas QB Jalon Daniels (Ankle) is questionable for this week's game vs TCU.
 Miami, OH QB Brett Gabbert (Head) is questionable for this week's game vs Akron.
 New Mexico QB Tevaka Tuioti (Concussion) is questionable at Utah St.
 Purdue QB Aidan O'Connell (Foot) has been downgraded to doubtful vs Rutgers.
 Temple was down to a 5th-string 5-foot-11 walk-on QB in Kamal Gray vs East Carolina last week and could be in the same boat this week vs Cincinnati.
 Toledo QB Eli Peters (Knee) is questionable for this week's game vs Ball St.
 UCLA QB Dorian Thompson-Robinson is probable for this week's game vs Arizona.
 Utah QB Cam Rising (Shoulder) is out for the season.

Recapping Week 12 Best Bets

It was a 3-2 week on our CFB best bets but we can't believe we lost with Oregon -13.5. The line closed -18.5 as UCLA was without their starting QB and yet the Ducks had no shot. Penn St was also a big miss for us but we did win with Oregon St and UCF although both came down to the final moments. Oklahoma was an east winner. After going 60% the last 5 years, our NFL picks flat out stink this year.

2020 Nationwide Football Newsletter Contest (Regular Season Only)

We are happy to provide you with the records, standings and plays used from the Power Sweep (3★, 4★ & Underdog), Gold Sheet (Key Releases), Power Plays (4.5★ for College 4★ for NFL), Sports Reporter (Best & Super Bets), Winning Points (Best Bets & Preferred), Playbook (3-5★'s), Pointwise (Ratings 1-4), Powers' Picks (1-4★'s) and the Sunday Night Owl Report (1-4★'s).

College						NFL						College/NFL Combined					
Newsletter	W	L	T	%	Net	Newsletter	W	L	T	%	Net	Newsletter	W	L	T	%	Net
Powers' Picks	23	14	1	62.16%	9	Playbook	18	15	0	54.55%	3	Playbook	24	19	0	55.81%	5
Playbook	6	4	0	60.00%	2	Gold Sheet	22	21	1	51.16%	1	Powers' Picks	35	36	1	49.30%	-1
Power Plays	10	8	0	55.56%	2	Sports Reporter	11	12	0	47.83%	-1	Power Sweep	29	31	1	48.33%	-2
Power Sweep	21	17	1	55.26%	4	Pointwise	15	18	0	45.45%	-3	Power Plays	14	15	0	48.28%	-1
Winning Points	24	25	1	48.98%	-1	Power Plays	4	7	0	36.36%	-3	Pointwise	37	45	1	45.12%	-8
Pointwise	22	27	1	44.90%	-5	Power Sweep	8	14	0	36.36%	-6	Winning Points	38	53	2	41.76%	-15
Gold Sheet	12	27	1	30.77%	-15	Powers' Picks	12	22	0	35.29%	-10	Gold Sheet	34	48	2	41.46%	-14
Sports Reporter	9	22	1	29.03%	-13	Winning Points	14	28	1	33.33%	-14	Sports Reporter	20	34	1	37.04%	-14
Combined	127	144	6	46.86%	-17	Combined	104	137	2	43.15%	-33	Combined	231	281	8	45.12%	-50

CFB and NFL Schedules with Vegas and Brad Powers Lines Week 13 Nov 26th-Dec 1st

NFL/CFB Thursday, Nov 26th				Saturday, November 28th			
Line	BP			Line	BP		
121 HOUSTON 12:30 p.m. CBS	-3	-2		211 SAN JOSE ST 4:00 p.m. FOX	58	58	
122 DETROIT	51.5	50		212 BOISE ST	-12	-12	
123 WASHINGTON 4:30 p.m. FOX	46	44		213 TROY 8:00 p.m. ESPN	48.5	51	
124 DALLAS	-3	-4		214 APPALACHIAN ST	-13.5	-13	
125 BALTIMORE 8:20 p.m. NBC	45	47		215 ARIZONA 8:00 p.m. FOX	69	70	
126 PITTSBURGH	-4	-3		216 UCLA	-10	-14	
127 COLORADO ST 2:00 p.m. CBSSN	55	52		217 COLORADO 3:30 p.m. ABC	64	63	
128 AIR FORCE	-5.5	-4		218 USC	-11.5	-11	
129 NEW MEXICO	-6.5	-4		219 NORTH TEXAS 3:00 p.m.	67	63	
130 UTAH ST 7:00 p.m. FS1	51.5	50		220 UTSA	-3	-3	
Friday, November 27th				Monday, November 30th			
131 CENTRAL FLORIDA 3:30 p.m. ESPN	-25	-22		221 TEXAS TECH 12:00 p.m. FOX	55	56	
132 SOUTH FLORIDA	67	68		222 OKLAHOMA ST	-11	-14	
135 NOTRE DAME 3:30 p.m. ABC	-5	-3		223 OHIO ST 12:00 p.m. FS1	-28	-28	
136 NORTH CAROLINA	68	71		224 ILLINOIS	70.5	68	
137 STANFORD 4:00 p.m. FOX	52	53		225 COASTAL CAROLINA 3:00 p.m. ESPN+	-17	-14	
138 CALIFORNIA	-1.5	-3		226 TEXAS ST	58	60	
139 OREGON 7:00 p.m. ESPN	-13.5	-13		227 SOUTH ALABAMA 3:00 p.m. ESPN3	63.5	60	
140 OREGON ST	64	61		228 ARKANSAS ST	-6.5	-6	
143 IOWA ST 12:00 p.m. ABC	-1	-1		229 AUBURN 3:30 p.m. CBS	62.5	64	
144 TEXAS	56.5	57		230 ALABAMA	-24.5	-24	
147 NEBRASKA 1:00 p.m. FOX	53.5	54		231 FLORIDA ATLANTIC 3:30 p.m. CBSSN	-6.5	-5	
148 IOWA	-13.5	-12		232 MIDDLE TENNESSEE	48.5	47	
151 WYOMING 4:00 p.m. FS1	-16.5	-14		233 KANSAS ST 7:00 p.m. ESPN2	46	49	
152 UNLV	52	54		234 BAYLOR	-5.5	-5	
153 SOUTHERN MISS 12:30 p.m. CBSSN	Cancelled			235 LSU 7:00 p.m. ESPN	63	60	
154 UAB	Cancelled			236 TEXAS A&M	-14.5	-14	
201 CENTRAL MICHIGAN 4:00 p.m. CBSSN	-7	-6		239 UTEP 11:00 p.m. ESPN3	44	51	
202 EASTERN MICHIGAN	59	62		240 RICE	-11.5	-11	
281 MASSACHUSETTS 12:00 p.m. ESPN3	56.5	54		241 MISSISSIPPI ST 4:00 p.m. SEC Network	68.5	71	
282 LIBERTY	-37.5	-36		242 OLE MISS	-9.5	-11	
Saturday, November 28th				NFL Wk 12 Sunday, Nov 29th			
155 TCU 8:00 p.m. FS1	-24	-24		251 LAS VEGAS 1:00 p.m. FOX	-3	53	
156 KANSAS	52.5	56		252 ATLANTA	55	-1	
157 GEORGIA SOUTHERN 12:00 p.m. ESPN3	-1.5	55		253 ARIZONA	-2.5	49	
158 GEORGIA ST	52.5	-1		254 NEW ENGLAND 1:00 p.m. CBS	49.5	-1	
161 GEORGIA 7:30 p.m. SEC Network	-21.5	-18		255 N.Y. GIANTS 1:00 p.m. CBS	-6	-7	
162 SOUTH CAROLINA	49	50		256 CINCINNATI	43	41	
163 KENTUCKY	60.5	61		257 CLEVELAND	-6.5	-7	
164 FLORIDA	-23	-21		258 JACKSONVILLE	49	49	
165 SMU 12:00 p.m. ESPN+	-12.5	-12		259 CAROLINA 1:00 p.m. FOX	48.5	48	
166 EAST CAROLINA	67.5	70		260 MINNESOTA	-3.5	-6	
167 PITTSBURGH 3:30 p.m. ESPN	55	61		261 TENNESSEE 1:00 p.m. CBS	51.5	52	
168 CLEMSON	-24	-25		262 INDIANAPOLIS	-3.5	-4	
169 MINNESOTA 2:00 p.m. Big Ten	Cancelled			263 L.A. CHARGERS 1:00 p.m. CBS	53.5	55	
170 WISCONSIN	Cancelled			264 BUFFALO 1:00 p.m. CBS	-5.5	-7	
173 CINCINNATI 4:00 p.m. ESPN	Cancelled			265 MIAMI 1:00 p.m. CBS	-7	-4	
174 TEMPLE	Cancelled			266 N.Y. JETS	44.5	42	
175 VIRGINIA 8:00 p.m. ACC Network	-9	-11		267 NEW ORLEANS 4:05 p.m. CBS	-5.5	-4	
176 FLORIDA ST	58.5	59		268 DENVER	43.5	44	
179 NORTHWESTERN 3:30 p.m. ESPN2	-13.5	-13		269 SAN FRANCISCO 4:05 p.m. FOX	45	44	
180 MICHIGAN ST	41.5	43		270 L.A. RAMS	-7	-4	
181 PENN ST 12:00 p.m. ABC	58	57		271 KANSAS CITY 4:25 p.m. FOX	-3.5	-4	
182 MICHIGAN	-2	-1		272 TAMPA BAY	56	58	
183 NC STATE 12:00 p.m. ACC Network	-14	-17		273 CHICAGO 8:20 p.m. NBC	45	43	
184 SYRACUSE	51.5	51		274 GREEN BAY	-8.5	-9	
185 DUKE 7:00 p.m. ESPN3	-1	-1		Tuesday, December 1st			
186 GEORGIA TECH	58	59		293 WKU 10:30 a.m. CBSSN	NL	52	
187 OKLAHOMA 7:30 p.m. ABC	-10.5	-11		294 CHARLOTTE	NL	-4	
188 WEST VIRGINIA	55	57					
191 MARYLAND 12:00 p.m. ESPN2	62.5	60					
192 INDIANA	-11	-16					
193 RUTGERS	62	61					
194 PURDUE 4:00 p.m. FS1	-11.5	-15					
195 KENT ST 12:00 p.m. CBSSN	67.5	66					
196 BUFFALO	-7.5	-12					
197 NORTHERN ILLINOIS 12:00 p.m. ESPN+	64	65					
198 WESTERN MICHIGAN	-20	-17					
199 BALL ST 12:00 p.m. ESPN3	63.5	62					
200 TOLEDO	-10	-8					
203 BOWLING GREEN 12:00 p.m. ESPN+	55.5	54					
204 OHIO	-24	-26					
205 MIAMI, OH 1:00 p.m. ESPN3	-14	-17					
206 AKRON	54.5	57					
207 TULSA 12:00 p.m. ESPN	Cancelled						
208 HOUSTON	Cancelled						

4★ = BEST
3★ = BETTER
2★ = GOOD
1★ = FAIR

THE POWERS' PACK

2★ UCLA (-10) over Arizona
2★ BOSTON COLLEGE (-1) over Louisville
1★ Pittsburgh/CLEMSON OVER 55
1★ PURDUE (-11.5) over Rutgers
BONUS PICK: Emailed Friday at 3pm ET

Games in Rotation Order

HOME TEAM IN CAPS

Thursday, November 26th

AIR FORCE 28 Colorado St 24. Colorado St had their game cancelled vs UNLV last week. In their last game, they had a misleading blowout loss to Boise St where they gave up 3 special teams' TD's. The Rams' rush defense is allowing just 106 ypg this year. Meanwhile, AF is off a 28-0 win over New Mexico last Friday. The Falcons had a 356-86 rushing yard edge. The Falcons have won 4 straight in the series and while we think they get their 5th here, we lean with the Rams ATS.

New Mexico 27 UTAH ST 23. New Mexico is off a shutout loss to Air Force last week where they missed 4 FG's! They could get back QB Tevaka Tuioti here but backup Trae Hall has played okay in his absence. They're taking on a Utah St team that is 0-4 SU and 0-4 ATS failing to cover by an average of 12 ppg. The Aggies have an interim coach and a backup QB. Even though our power ratings are very strong on Utah St here, it's tough recommending anything more than a lean on a Utah St team that could be waving the white flag on the season.

Friday, November 27th

Central Florida 45 SOUTH FLORIDA 23. UCF has won 3 straight in the "War on I-4" and is a heavy favorite to make it 4 straight here. However, how much motivation will they have for margin now that they have lost 3 games this season and after giving a solid effort vs Cincy last week? The Knights were extremely fortunate to get a cover there as Cincy decided to take a knee instead of scoring late. Meanwhile, USF saw their game vs Navy cancelled. The Bulls have lost 7 straight games since the opener but have covered 3 of their last 4 catching 14 or more points. UCF is 0-4 ATS laying more than 20 points this year. Lean USF.

Notre Dame 37 NORTH CAROLINA 34. Arguably the best match-up of the week. Both teams come in off a bye. North Carolina has been inconsistent at times this season but their offense is averaging 48 ppg and 607 ypg in their last 6 games. On the other side, ND has scored 40-plus in back-to-back games for the first time since 1996 as QB Ian Book has taken his game to another level. ND has a big edge on defense allowing just 17 ppg and 302 ypg while NC allows 31 ppg and 414 ypg. However, ND will be without two starting OL, which won't get much attention in the market. It is the 2nd highest total in ND football history but we lean OVER.

CALIFORNIA 28 Stanford 25. Both teams sit at a disappointing 0-2 needing a win. We went against California on these pages last week and won as they lost outright Oregon St. However, the Bears looked much improved compared to the opener and probably should have won the game as QB Cahse Garbers threw 2 INT's inside the Oregon St 10-yard line. Meanwhile, Stanford saw their game vs Washington St cancelled due to COVID issues at Washington St. Still, the Cardinal are just 4-10 SU in their last 14 games. Cal broke their 9-game series losing streak last year and they win and cover another here.

Oregon 37 OREGON ST 24. The Ducks have won 11 of the last 12 meetings in what used to be called the "Civil War" but that was one of many things to go by the way side in 2020. We can't begin to tell you how disappointed we were with Oregon last week. We gave out the Ducks -13.5 on these pages and they closed as 18.5-point favorites playing a short-handed UCLA team without their starting QB. They should have lost the game outright! UCLA outgained them but the Bruins had 4 TO's. Meanwhile, we did win with Oregon St on these pages but the Beavers also weren't that impressive benefiting from a pair of Cal INT's inside the Oregon St red zone. We don't see too much value here.

Iowa St 29 TEXAS 28. Texas has covered 4 straight in the series but did lose last year straight up. The Cyclones come in off their best performance of the season as they beat Kansas St 45-0 with a 539-149 yard edge. RB Breece Hall has topped 100 yards in every game so far this season. On the other side, Texas saw their game vs Kansas cancelled. A win here by either team would go a long way towards grabbing a spot in the Big 12 Title game. It is the final home game for Texas QB Sam Ehlinger but we think Iowa St is the better team.

IOWA 33 Nebraska 21. An embarrassing loser for us on these pages last week going up against a red-hot Iowa team in their 41-21 win over Penn St. Do note the Hawkeyes were +3 in TO's and only outgained Penn St by 19 yards. Speaking of embarrassments, Nebraska got crushed as 17-point favorites to Illinois (Nebraska was -5 in TO's). We're not wild about laying doubles with Iowa here but we can't recommend going against them for the second week in a row.

San Diego St at Fresno St was cancelled due to COVID issues at Fresno.

Wyoming 34 UNLV 20. We haven't seen Wyoming in a few weeks as their last two games have been cancelled. UNLV also saw their game vs Colorado St cancelled last week. The 0-4 Rebels have disappointed so far under first-year coach Marcus Arroyo but they haven't played that bad relative to expectation after the first half of the opener vs San Diego St. Wyoming is 8-17-2 ATS laying 14 or more since late 1996. We lean UNLV.

Southern Miss at UAB was cancelled.

Central Michigan 34 EASTERN MICHIGAN 28. Central Michigan is on a 8-3 SU/ATS run in the series. Both teams come in off losses last week. CMU's defense allowed 628 yards and 52 points vs Western Michigan and EMU was outgained by 212 yards in a 17-point loss to Toledo. EMU is in their preferred role as they are 24-7-3 ATS (+3.5 ppg) as an underdog since mid-2016. We lean EMU and the OVER.

LIBERTY 45 Massachusetts 9. Will there be "bubble burst" for Liberty after they saw their unbeaten season come to an end last week in a 1-point loss at NC State? Meanwhile, UMass is 0-3 SU this season but they've played 3 bowl teams from last year and are 2-1 ATS including a comfortable cover at FAU last week. We think they cover here.

Saturday, November 28th

Tcu 40 KANSAS 16. We haven't seen the Jayhawks in a few weeks but make no mistake about it they are having an historically bad season even by their low standards as they are 0-7 SU and 0-6-1 ATS. Meanwhile TCU is off a scheduled bye and the Horned Frogs need a feel good win. The problem is the Horned Frogs are just 2-6 ATS vs Kansas the last 8 years falling short of expectation by 13 ppg. We prefer the OVER as Jayhawks games are 6-0-1 to the OVER this year and we don't think you're paying a premium to back it.

GEORGIA ST 28 Georgia Southern 27. Georgia Southern has won the last two years by at least 21 points. Last week the Eagles lost a close one to Army as they blew a 21-7 halftime lead. They had a chance to win it in the final seconds but inexplicably ran it with no time outs and ran out of time. Meanwhile, Georgia St is off one of their better performances as they handled South Alabama. Georgia Southern has played in 7 one possession games already this season, more than anyone in the country and we look for another here.

Arkansas at Missouri was cancelled due to COVID issues at Arkansas.

Georgia 34 SOUTH CAROLINA 16. The Bulldogs just haven't been able to pull it all together this year as they have failed to cover in 4 straight games. Last week, they finally got some great production at QB with JT Daniels throwing for 401 yards (first QB to do that at UGA since 2013) and 4 TD's but the run game managed just 8 yards in a near upset loss to a struggling and short-handed Miss St team. Meanwhile, South Carolina lost 17-10 to Missouri in Mike Bobo's first game as interim coach. This game will be special for Bobo who played at UGA and was a long-time O.C. there. We lean with S.C. Yes, their 2-6 but they've really only had two bad performances this entire year.

FLORIDA 41 Kentucky 20. Florida is on a 32-1 SU run in the series dating back to 1987 but have failed to cover in 3 straight and also lost outright the last time they hosted the Wildcats. The Gators had a tougher time than expected last week vs Vanderbilt failing to cover as huge favorites. QB Kyle Trask is now favored vs the field when it comes to the Heisman and we think head coach Dan Mullen won't be afraid to pad his stats. Meanwhile, Kentucky looks like a fragile team after a 60-point loss last week to Alabama where just announced before kickoff, they had multiple players ruled out. However, this line looks expensive as Alabama was laying around 30 last week at home to Kentucky and we think the Tide are at least 10 points better than Florida if we're comparing lines.

Smu 41 EAST CAROLINA 29. East Carolina took advantage of a short-handed Temple team playing a 5th-string walk-on QB in their 28-3 win. They might be getting a little too much credit for that one. Meanwhile, should be itching to atone for a loss to Tulsa a few weeks ago where the Mustangs blew a big lead. Expect a lot of points here as each of the last 5 meetings have gone OVER the total with an average of 84 total points scored in those games.

1★ OVER 55 CLEMSON 43 Pittsburgh 18. We like the OVER here. Clemson head coach Dabo Swinney seems agitated after last week's game vs Florida St was postponed due to Clemson having a late positive COVID test. QB Trevor Lawrence returns to the line-up and will be itching to deliver a good performance. However, Clemson's banged up defense looks like it could be without several starters again. We've seen 4 straight Clemson games go OVER the total. Meanwhile, we've seen 6 straight Pitt games go OVER and that includes a stretch without QB Kenny Pickett. Pickett has returned to the lineup the last two games and the Panthers' offense has topped 40 points in each including a shocker last week as a short-handed Pitt team destroyed Virginia Tech led by Pickett who threw for 404 yards.

Minnesota at Wisconsin was cancelled due to positive cases at Minnesota.

Western Kentucky at Charlotte was moved to Tuesday, December 1st.

Cincinnati 45 TEMPLE 10. Cincinnati deserves that lofty No. 7 ranking in the initial CFB Playoff standings. That's higher than any Group of 5 team ever and we also have Cincinnati in our Top 10 power ratings (higher than any Group of 5 team at this point in the season). We were fortunate to cover against the Bearcats last week as their RB decided to take a knee at the 1-yard line instead of scoring in the final minutes. Meanwhile, Temple was down to a 5th-string walk-on QB last week and lost to East Carolina 28-3. This will be ugly but it is priced into the line as this is the largest favorite role on the road in Cincinnati history.

Virginia 35 FLORIDA ST 24. Two teams heading in opposite directions. UVA has won 3 straight games and have covered 6 of their 8 games this season. Last week they crushed Abilene Christian by 40 but got a very lucky cover (see page 1). Meanwhile, FSU has been blown out in 3 straight games and have covered only twice in their 8 games so far this season. Last week's game vs Clemson was cancelled at the last minute and some believe FSU was trying to avoid an embarrassing loss (was the largest underdog role ever for the Noles). To show how far FSU has fallen this is only the 2nd time they've been an underdog to UVA (last year being the other) as they were on average a 16-point favorite in the previous 18 meetings prior to last season.

Louisiana Tech at FIU was cancelled due to COVID issues at FIU.

Northwestern 28 MICHIGAN ST 15. Northwestern is pretty much a "shoo-in" now to get to the Big Ten Championship game after upsetting Wisconsin last week. That's a far cry from their 3-9 season a year ago. However, note the Wildcats were outgained by more than 100 yards last week and were +4 in TO's. Meanwhile, they're taking on a Michigan St team that has been exposed in their last two games vs Iowa and Indiana getting outscored 73-7! With that being said, this isn't a great spot for Northwestern and the Wildcats are just 8-15 ATS all-time laying doubles in Big Ten play.

MICHIGAN 29 Penn St 28. Obviously, these are two of the most disappointing teams in the country this year. Hindsight is 20/20 but shame on us for backing Penn St vs Iowa last week on these pages as the Nittany Lions dropped to 0-5. Turnovers were the main culprit (-3). Meanwhile, Michigan had to rally from a double-digit deficit to beat Rutgers in three overtimes last week. There was some positive news as they may have found their QB of the future as Cade McNamara came off the bench and threw for 260 yards and 4 TD's while leading the comeback. We wish you could still "tie" in CFB because that's what we would call for here. Instead we will call Michigan by 1 and move on to better value games.

NC State 34 SYRACUSE 17. We mentioned this last week but NC State has a chance to finish 8-3 on the season after going just 4-8 a year ago. Last week the Wolf Pack ended Liberty's unbeaten season with a hard-fought 15-14 win. Meanwhile, Syracuse looks to just be playing out what has been a miserable season as last week they lost 30-0 to Louisville to drop to 1-8 on the season. We could only look at NC State here.

Duke 30 GEORGIA TECH 29. These two teams have played a combined one game so far in the month of November. Both are having disappointing seasons. We think Duke is a bit underrated as they have only been outgained by 5 ypg despite their 2-6 record. A -11 TO margin is the main culprit. Meanwhile, Georgia Tech is -98 ypg on the season and the Yellow Jackets have also dealt with TO issues (-7). A true coin flip.

Oklahoma 34 WEST VIRGINIA 23. As you can see by our power ratings on the next page, we think Oklahoma is a Top 5 team right now. The Sooners have certainly played like it lately as they have won 5 straight games by 28 ppg and have covered 5 straight games by 14 ppg. Last week, we easily won with them on these pages in their blowout win over Oklahoma St. However, they will be tested here vs a West Virginia team that has allowed just 274 ypg and 18 ppg this year (obviously, in the offensive-driven Big 12 those numbers are great!). The Mountaineers are coming off a bye and have covered 3 straight games. We would love to continue riding the OU money train, but not against this WVU team.

Miami, FL at Wake Forest was postponed due to positive cases at Miami.

INDIANA 38 Maryland 22. How can you not be impressed with this Indiana team? The Hoosiers proved they are legit losing by only 7 in Columbus last week (fought back from a 35-7 deficit). QB Michael Penix threw for more yards (491) than any QB had vs the Buckeyes since the early 1980s! IU is now 5-0 ATS on the season. Meanwhile, we haven't seen Maryland in a few weeks. The Terps were the first team EVER to pull outright upsets as 18-point or more underdogs in back-to-back weeks. The problem is it came against an overrated Minnesota team and a now 0-5 Penn St team. This isn't a great spot for the Hoosiers but we could only look to back them here.

1★ PURDUE 38 Rutgers 23. Both teams come in off heart-breaking losses last week. First, Purdue was robbed by a bad call late vs Minnesota that took a TD off the board. On the bright side, QB Jack Plummer was great filling in for Aidan O'Connell as he threw for 367 yards and 3 TD's and All-American WR Rondale Moore returned to the lineup and caught 15 passes! On the other side, Rutgers blew a 17-0 lead vs Michigan and lost in 3 OT's on Saturday Night. Purdue has an extra day to prep and we feel they take some frustrations out here.

BUFFALO 39 Kent St 27. A battle of 3-0 teams in what should decide the MAC East. We believe Buffalo is by far the best team in the MAC. The Bulls have outscored their opponents by 25 ppg and are +110 ypg so far this season. They have revenge for blowing a 3-TD fourth quarter lead last year vs Kent St. Speaking of that game, that upset has sparked the Golden Flashes to 7 straight wins. The Flashes just destroyed Bowling Green and Akron the last two weeks. However, those are two of the worst teams in all of CFB and Kent allowed BG to rush for 260 yards and Akron to rush for 212. That's not a good look facing the powerful Buffalo rush attack that saw RB Jaret Patterson run for 301 yards last week.

WESTERN MICHIGAN 41 Northern Illinois 24. 0-3 NIU vs 3-0 WMU here. While we are not fans of this NIU team, we think the Huskies are being a too disrespected in the market place as they easily covered a big spread last week vs Ball St. Certainly, WMU looks like they will win the MAC West this year as they've beaten Toledo and CMU the last two weeks. The Broncos do have revenge for losing outright last year to NIU when a win would have given them the division crown. They get revenge but not to the tune of covering a 20-point spread.

TOLEDO 35 Ball St 27. Toledo has revenge for losing 52-14 last year that snapped a 5-game series win streak for them. The Rockets are 2-1 this year and should be 3-0 if not for a for a late blown lead vs Western Michigan. They crushed EMU last week even with QB Eli Peters getting hurt (check status). Meanwhile, they're taking on a Ball St team that is 2-1, but 0-3 ATS as they struggled as a big favorite vs Northern Illinois last week. The Cardinals do have the QB edge here regardless of who is behind center for UT.

OHIO 40 Bowling Green 14. Obviously, BG is one of the worst teams in the country getting outscored by 32 ppg and outgained by 210 ypg. However, last week they did get a cover vs Buffalo despite allowing 396 rush yards and 42

points. On the other side, Ohio saw their game vs Miami, OH cancelled last week. The Bobcats have not looked themselves so far at 0-2 ATS and in their last game, they were outgained 435-307 to lowly Akron. With that in mind, we don't see much value here.

Miami, OH 37 AKRON 20. Don't see how this line is only 14. The Zips are -31 ppg on the season and have been outgained by 161 ypg. Last week they allowed 750 yards and 69 points to Kent St. That's now 20 straight losses for them by an average of 25 ppg and they are just 4-16 ATS (-9 ppg) in that stretch. Meanwhile, Miami needs a feel-good win after getting crushed by Buffalo and then seeing last week's game vs Ohio cancelled due to COVID.

Tulsa at Houston was postponed due to COVID issues at Houston.

Utah at Arizona St was cancelled due to COVID issues at Arizona St.

BOISE ST 35 San Jose St 23. Boise St is 13-0 SU vs San Jose St but has failed to cover the last two match-ups. San Jose St is 4-0 for the first time since the 1950's and this is one of their more important games in recent memory. The Spartans have won with defense this year only allowing 15 ppg. Meanwhile, it's just another game for the Mountain West's best program as the Broncos come back from the Islands after getting back-doored by Hawaii. Boise has topped 40 points in every game outside of BYU but it should be noted they have been outgained on the season. That keeps us off them here.

APPALACHIAN ST 32 Troy 19. App St is just 1-7 ATS this season but the Mountaineers probably should have covered vs unbeaten Coastal Carolina last week as a late "Pick 6" did some of their backers in. Meanwhile, Troy lost outright to Middle Tennessee as a double-digit favorite. The Trojans didn't have their coach Chip Lindsey due to COVID. He is expected to return for this game. QB Gunnar Watson did return and threw for 300 yards however, the concern here has to be a Troy offense that doesn't have much balance as they've failed to top 100 yards rushing in any of their last 4 games. We bet Troy +18 on Sunday but don't see much value now.

2★ UCLA 42 Arizona 28. Arizona had a misleading 44-27 loss to Washington last week. The Wildcats actually trailed 37-0 entering the 4Q and got 300 of their 331 yards of total offense in garbage time. Meanwhile, we lost on these pages fading UCLA last week. Despite playing with a backup QB, they probably should have beat Oregon outright as they had a 267-88 rushing yard edge but were -3 in TO's (including a "Pick 6" on the final play of the first half). QB Dorian Thompson-Robinson should return here and even if he doesn't we think there is value on UCLA. The Bruins are -7 in TO's but are 2-1 ATS and +86 ypg. This could be an underrated team as after trailing 35-7 to Colorado in the first half, they've outscored their opponents 104-61 in the last 10 quarters.

USC 37 Colorado 26. Colorado is off to a surprising 2-0 start pulling outright upsets over UCLA and Stanford. Last week they did see their game vs Arizona St cancelled due to COVID issues at Arizona St. Meanwhile, USC is 3-0 this season but we haven't been overly impressed. They won their first two games in the final minute vs Arizona St and Arizona and last week were +3 in TO's vs a Utah team playing their first game of the season. Our power ratings say USC is the play but we're passing.

UTSA 33 North Texas 30. UTSA has certainly over-achieved so far this season at 6-4 SU under first-year coach Jeff Traylor. However, last week they didn't cover an inflated spread vs Southern Miss and were actually outgained. Meanwhile, North Texas off a long layoff beat Rice by 10. UTSA does have the better defense but the Mean Green may have figured some things out on that side of the ball during their month absence.

OKLAHOMA ST 35 Texas Tech 21. We won on these pages fading Oklahoma St last week in their blowout loss to Oklahoma. QB Spencer Sanders was banged up during the game but should return. Will there be a letdown here vs a Texas Tech team off a bye? The Red Raiders are 0-3 ATS this year on the road. We lean with Oklahoma St.

Ohio St 48 ILLINOIS 20. If it wasn't clear before, it is now...this year's Ohio St team is not nearly as good as last year's team. They're missing JK Dobbins at RB and Chase Young at DE. However, the biggest area of concern is a pass defense that was just torched for the most pass yards against them in 35 years (495 by Indiana QB Michael Penix). It also didn't help that QB Justin Fields threw 3 INT's which is as many as he threw all last season. Meanwhile, Illinois got a dominant upset win at Nebraska last week. Brandon Peters returned at QB for the first time since the opener and the Illini ground game has topped 285 yards in back-to-back weeks. Still, they're out-classed here.

Coastal Carolina 37 TEXAS ST 23. First, we think Texas St should be applauded. The Bobcats will complete a full 12-game with the conclusion of this game. Despite a poor record, they certainly haven't given up on the season as they have covered 4 straight and after nearly pulling the upset vs Georgia Southern, they broke through and upset Arkansas St last week. Meanwhile, this isn't a great spot for Coastal Carolina. They're off a big win vs Appalachian St that was aided by a late "Pick 6". They also have a big game vs Liberty on deck. We like the Bobcats.

ARKANSAS ST 33 South Alabama 27. Both teams are off disappointing performances. Arkansas St was upset by Texas St as they have lost 4 straight games to drop to 3-6. The Red Wolves will be heavy favorites in their next two games so they need this one for bowl eligibility (if there's such a thing in 2020). Meanwhile, South Alabama has also lost 4 straight games (0-3-1 ATS). Do note the UNDER has cashed in 6 straight games for them and that is where our lean is.

ALABAMA 44 Auburn 20. These two teams have split out their last 40 meetings and despite Alabama's dominance in the sport over the last decade-plus, they've lost 4 times to Auburn since 2010. They will be playing with revenge here and Saban has covered the last 4 times he's had revenge vs Auburn. If you're wondering when was the last time Auburn was catching this many points, it was actually the last time they played here as they were 26.5-point underdogs at Alabama in 2018 (lost 52-21). The Tigers are 5-2 SU and have covered 3 straight games. However, they're taking on by far the best team in the country as Alabama has covered 4 straight games and are off a 63-3 beat down of Kentucky. The Tide are +30 ppg and +189 ypg despite playing a SEC only schedule. We bet Auburn on Sunday and we think we made a mistake especially with Auburn RB Tank Bigsby possibly being out.

Florida Atlantic 26 MIDDLE TENNESSEE 21. FAU hasn't looked great this season but kudos for Willie Taggart and Co who were put in a tough spot with an inexperienced team and a lack of spring practice. Still, the Owls are 5-1. Also after a really poor start, Middle Tennessee has covered 5 of their last 7 games and pulled an outright upset over Troy last week as double-digit underdogs. We have a slight lean on the home team.

BAYLOR 27 Kansas St 22. Baylor really needs a win as the Bears have lost 5 straight since the opener but do come in off a bye and have been close in recent losses to Iowa St and Texas Tech. Close does not represent the beat down Kansas St took last week vs the Cyclones as they fell 45-0. The Wildcats, who came into last week with 12 active cases of COVID, were missing starting LB's Justin Hughes and Elijah Sullivan. We lean OVER as the two teams have seen their games average 54 total ppg.

TEXAS A&M 37 Lsu 23. Texas A&M is 1-7 SU (-15.9 ppg) and 0-7-1 ATS (-9.4 ppg) vs LSU since 2011. These are two teams that are heading in opposite directions at least for this year. The Aggies are No. 5 in the recent CFB Playoff poll but we are cautious. After they were just beginning to hit their stride, they haven't played in two weeks. Last week LSU got a much-needed win over Arkansas although they were fortunate. Since the line crossed through a key "14" we'd actually lean LSU now.

RICE 31 Utep 20. UTEP played 4 games in 4 weeks to start off the season. They have played a total of 3 games since September 26th so its been tough to get a feel on them and they had one of their worst performances in their last game losing 52-21 to UTSA. Meanwhile, Rice has only played 3 games so far this season but one of them was last week in a 10-point loss to North Texas. We bet Rice -7 on Sunday but now at the current number the Owls haven't been this large of a conference favorite since 2014. We like the OVER.

OLE MISS 41 Mississippi St 30. Egg Bowl where it's been super competitive with Ole Miss holding a 21-19 advantage the last 40 years. However, the Rebs have lost two straight including last year's thriller thanks to a missed extra point after a stupid penalty. Where did that performance come from? We're talking specifically about Miss St who nearly pulled a shocker last week vs Georgia. Considering the Bulldogs were 0-5 ATS in their previous 5 games, maybe they haven't waved the white flag on the season. Meanwhile, Ole Miss saw their game vs Texas A&M cancelled. The Rebels had won two straight scoring 50-plus points vs Vandy and South Carolina. If given the opportunity we feel Lane Kiffin will keep the foot on the gas pedal here. We lean OVER.

UL-Lafayette 40 UL-MONROE 14. Nine of the last 11 meetings have been decided by 7 points or less but safe to say this one won't be. This is the largest away favorite role for ULL in school history. ULM is 0-8 SU this season and hasn't played the last couple of weeks. Their starting QB Colby Suits is out for the season but Jeremy Hunt did throw for 339 yards and 3 TD's in relief

vs Georgia St. Meanwhile, ULL saw their game vs Central Arkansas cancelled last week. They do have a huge game at App St on deck. We're not getting involved.

Nevada 34 HAWAII 26. We probably shouldn't bring this up but Nevada has revenge for a 54-3 loss to Hawaii last year as a 2-point favorite. It was our worst loss on these pages in our history. The Wolf Pack are 5-0 this year while Hawaii has been struggling. The Warriors got a cover last week vs Boise St but it was misleading as they scored a couple of garbage time TD's. Our favorite Sunday bet this week was Nevada -2. However, we can't recommend laying 7 now.

Memphis 39 NAVY 24. Obviously, Navy is not a good team this year but somehow they are 3-4 straight up on the season. Some late scoring in each of their last two games vs Houston and SMU (two teams very similar in power ratings to Memphis) is masking how bad the Middies really are. Houston was a 15.5-point favorite at Navy a few weeks ago and covered. How is a similar Memphis team only laying less than 2 TD's? Memphis almost got upset two weeks ago to USF but they outgained the Bulls by 205 yards and gave up a defensive TD. Yes, Navy has given Memphis fits in the past but this is not your older brother's Navy team...they're throwing more than any time in 20 years.

2★ BOSTON COLLEGE 31 Louisville 26. Boston College comes in fresh off a bye after playing 9 straight weeks to start the season. The Eagles haven't had any COVID issues this season and need one win in their final 2 games to achieve a respectable winning season under first-year coach Jeff Haskley. They're taking on a Louisville off one of their most complete performances of the season beating Syracuse 30-0. We like BC here as QB Phil Jurkovec should be closer to 100% after hurting his shoulder vs Clemson. Also BC has alternated wins and losses for 8 straight weeks. Big disparity in TO's here as BC is +7 while Louisville is -12.

MISSOURI 31 Vanderbilt 17. Another game that was just announced yesterday as both teams had games cancelled this week. Tough spot for Vanderbilt but the Commodores have been scrappy the last few weeks with 3 straight covers all by double-digits. Missouri is off a win at South Carolina but the Tigers offense hasn't topped 20 points in any of their last 3 games. Do you want to lay more than 3 TD's with that?

WASHINGTON 27 Utah 20. This game was just put on the schedule yesterday as both teams had games cancelled this week. Washington had a misleading 44-27 win over Arizona last week as the Huskies led 37-0 entering the 4Q and then gave up 300 yards and 27 points in the 4Q. Utah is off a loss to USC as the Utes had 5 TO's. A line hasn't really been posted yet on this one but we lean UNDER.

Tuesday, December 1st

CHARLOTTE 28 Western Kentucky 24. This game was post-poned until this date due to COVID issues at Charlotte. The 49ers haven't played in a month so "Rest vs Rust" comes into play especially against a WKU team that is playing a 9th straight week. A line hasn't really been posted yet on this one but we lean with Charlotte as WKU is just 2-7-1 ATS this year.

Updated College Football Power Ratings for Week 13

Rank	Team	Pre	11/25	Rank	Team	Pre	11/25	Rank	Team	Pre	11/25	Rank	Team	Pre	11/25	Rank	Team	Pre	11/25	Rank	Team	Pre	11/25	Rank	Team	Pre	11/25																																																																																																																																																																																																																																																																																																																																																																																																																																																																																																																																																																																																																																																																																																																																																																																																																																																																																																																																																																																																																																																																																																																	
1	Alabama	94.97	101.47	33	Tennessee	78.63	74.13	65	Oregon State	68.53	68.03	97	Troy	60.01	58.01	101	Liberty	58.19	57.69	102	BYU	57.10	57.60	103	Coastal Carolina	56.97	56.97	104	Marshall	56.97	56.97	105	Cincinnati	56.97	56.97	106	Arkansas	56.97	56.97	107	Wake Forest	56.97	56.97	108	Alabama	56.97	56.97	109	Tulsa	56.97	56.97	110	Northwestern	56.97	56.97	111	Syracuse	56.97	56.97	112	San Jose State	56.97	56.97	113	Middle Tenn	56.97	56.97	114	Minnesota	56.97	56.97	115	Mississippi State	56.97	56.97	116	West Virginia	56.97	56.97	117	Penn State	56.97	56.97	118	LSU	56.97	56.97	119	Virginia Tech	56.97	56.97	120	Pittsburgh	56.97	56.97	121	TCU	56.97	56.97	122	TCU	56.97	56.97	123	TCU	56.97	56.97	124	TCU	56.97	56.97	125	TCU	56.97	56.97	126	TCU	56.97	56.97	127	TCU	56.97	56.97	128	TCU	56.97	56.97	129	TCU	56.97	56.97	130	TCU	56.97	56.97	131	TCU	56.97	56.97	132	TCU	56.97	56.97	133	TCU	56.97	56.97	134	TCU	56.97	56.97	135	TCU	56.97	56.97	136	TCU	56.97	56.97	137	TCU	56.97	56.97	138	TCU	56.97	56.97	139	TCU	56.97	56.97	140	TCU	56.97	56.97	141	TCU	56.97	56.97	142	TCU	56.97	56.97	143	TCU	56.97	56.97	144	TCU	56.97	56.97	145	TCU	56.97	56.97	146	TCU	56.97	56.97	147	TCU	56.97	56.97	148	TCU	56.97	56.97	149	TCU	56.97	56.97	150	TCU	56.97	56.97	151	TCU	56.97	56.97	152	TCU	56.97	56.97	153	TCU	56.97	56.97	154	TCU	56.97	56.97	155	TCU	56.97	56.97	156	TCU	56.97	56.97	157	TCU	56.97	56.97	158	TCU	56.97	56.97	159	TCU	56.97	56.97	160	TCU	56.97	56.97	161	TCU	56.97	56.97	162	TCU	56.97	56.97	163	TCU	56.97	56.97	164	TCU	56.97	56.97	165	TCU	56.97	56.97	166	TCU	56.97	56.97	167	TCU	56.97	56.97	168	TCU	56.97	56.97	169	TCU	56.97	56.97	170	TCU	56.97	56.97	171	TCU	56.97	56.97	172	TCU	56.97	56.97	173	TCU	56.97	56.97	174	TCU	56.97	56.97	175	TCU	56.97	56.97	176	TCU	56.97	56.97	177	TCU	56.97	56.97	178	TCU	56.97	56.97	179	TCU	56.97	56.97	180	TCU	56.97	56.97	181	TCU	56.97	56.97	182	TCU	56.97	56.97	183	TCU	56.97	56.97	184	TCU	56.97	56.97	185	TCU	56.97	56.97	186	TCU	56.97	56.97	187	TCU	56.97	56.97	188	TCU	56.97	56.97	189	TCU	56.97	56.97	190	TCU	56.97	56.97	191	TCU	56.97	56.97	192	TCU	56.97	56.97	193	TCU	56.97	56.97	194	TCU	56.97	56.97	195	TCU	56.97	56.97	196	TCU	56.97	56.97	197	TCU	56.97	56.97	198	TCU	56.97	56.97	199	TCU	56.97	56.97	200	TCU	56.97	56.97	201	TCU	56.97	56.97	202	TCU	56.97	56.97	203	TCU	56.97	56.97	204	TCU	56.97	56.97	205	TCU	56.97	56.97	206	TCU	56.97	56.97	207	TCU	56.97	56.97	208	TCU	56.97	56.97	209	TCU	56.97	56.97	210	TCU	56.97	56.97	211	TCU	56.97	56.97	212	TCU	56.97	56.97	213	TCU	56.97	56.97	214	TCU	56.97	56.97	215	TCU	56.97	56.97	216	TCU	56.97	56.97	217	TCU	56.97	56.97	218	TCU	56.97	56.97	219	TCU	56.97	56.97	220	TCU	56.97	56.97	221	TCU	56.97	56.97	222	TCU	56.97	56.97	223	TCU	56.97	56.97	224	TCU	56.97	56.97	225	TCU	56.97	56.97	226	TCU	56.97	56.97	227	TCU	56.97	56.97	228	TCU	56.97	56.97	229	TCU	56.97	56.97	230	TCU	56.97	56.97	231	TCU	56.97	56.97	232	TCU	56.97	56.97	233	TCU	56.97	56.97	234	TCU	56.97	56.97	235	TCU	56.97	56.97	236	TCU	56.97	56.97	237	TCU	56.97	56.97	238	TCU	56.97	56.97	239	TCU	56.97	56.97	240	TCU	56.97	56.97	241	TCU	56.97	56.97	242	TCU	56.97	56.97	243	TCU	56.97	56.97	244	TCU	56.97	56.97	245	TCU	56.97	56.97	246	TCU	56.97	56.97	247	TCU	56.97	56.97	248	TCU	56.97	56.97	249	TCU	56.97	56.97	250	TCU	56.97	56.97	251	TCU	56.97	56.97	252	TCU	56.97	56.97	253	TCU	56.97	56.97	254	TCU	56.97	56.97	255	TCU	56.97	56.97	256	TCU	56.97	56.97	257	TCU	56.97	56.97	258	TCU	56.97	56.97	259	TCU	56.97	56.97	260	TCU	56.97	56.97	261	TCU	56.97	56.97	262	TCU	56.97	56.97	263	TCU	56.97	56.97	264	TCU	56.97	56.97	265	TCU	56.97	56.97	266	TCU	56.97	56.97	267	TCU	56.97	56.97	268	TCU	56.97	56.97	269	TCU	56.97	56.97	270	TCU	56.97	56.97	271	TCU	56.97	56.97	272	TCU	56.97	56.97	273	TCU	56.97	56.97	274	TCU	56.97	56.97	275	TCU	56.97	56.97	276	TCU	56.97	56.97	277	TCU	56.97	56.97	278	TCU	56.97	56.97	279	TCU	56.97	56.97	280	TCU	56.97	56.97	281	TCU	56.97	56.97	282	TCU	56.97	56.97	283	TCU	56.97	56.97	284	TCU	56.97	56.97	285	TCU	56.97	56.97	286	TCU	56.97	56.97	287	TCU	56.97	56.97	288	TCU	56.97	56.97	289	TCU	56.97	56.97	290	TCU	56.97	56.97	291	TCU	56.97	56.97	292	TCU	56.97	56.97	293	TCU	56.97	56.97	294	TCU	56.97	56.97	295	TCU	56.97	56.97	296	TCU	56.97	56.97	297	TCU	56.97	56.97	298	TCU	56.97	56.97	299	TCU	56.97	56.97	300	TCU	56.97	56.97	301	TCU	56.97	56.97	302	TCU	56.97	56.97	303	TCU	56.97	56.97	304	TCU	56.97	56.97	305	TCU	56.97	56.97	306	TCU	56.97	56.97	307	TCU	56.97	56.97	308	TCU	56.97	56.97	309	TCU	56.97	56.97	310	TCU	56.97	56.97	311	TCU	56.97	56.97	312	TCU	56.97	56.97	313	TCU	56.97	56.97	314	TCU	56.97	56.97	315	TCU	56.97	56.97	316	TCU	56.97	56.97	317	TCU	56.97	56.97	318	TCU	56.97	56.97	319	TCU	56.97	56.97	320	TCU	56.97	56.97	321	TCU	56.97	56.97	322	TCU	56.97	56.97	323	TCU	56.97	56.97	324	TCU	56.97	56.97	325	TCU	56.97	56.97	326	TCU	56.97	56.97	327	TCU	56.97	56.97	328	TCU	56.97	56.97	329	TCU	56.97	56.97	330	TCU	56.97	56.97	331	TCU	56.97	56.97	332	TCU	56.97	56.97	333	TCU	56.97	56.97	334	TCU	56.97	56.97	335	TCU	56.97	56.97	336	TCU	56.97	56.97	337	TCU	56.97	56.97	338	TCU	56.97	56.97	339	TCU	56.97	56.97	340	TCU	56.97	56.97	341	TCU	56.97	56.97	342	TCU	56.97	56.97	343	TCU	56.97	56.97	344	TCU	56.97	56.97	345	TCU	56.97	56.97	346	TCU	56.97	56.97	347	TCU	56.97	56.97	348	TCU	56.97	56.97	349	TCU	56.97	56.97	350	TCU	56.97	56.97	351	TCU	56.97	56.97	352	TCU	56.97	56.97	353	TCU	56.97	56.97	354	TCU	56.97	56.97	355	TCU	56.97	56.97	356	TCU	56.97	56.97	357	TCU	56.97	56.97	358	TCU	56.97	56.97	359	TCU	56.97	56.97	360	TCU	56.97	56.97	361	TCU	56.97	56.97	362	TCU	56.97	56.97	363	TCU	56.97	56.97	364	TCU	56.97	56.97	365	TCU	56.97	56.97	366	TCU	56.97	56.97	367	TCU	56.97	56.97	368	TCU	56.97	56.97	369	TCU	56.97	56.97	370	TCU	56.97	56.97	371	TCU	56.97	56.97	372

Week 13 Computer Projected Lines for Every CFB Game

For the past four seasons we have posted computer projected lines for every game. **Games where there was of difference of more than 3 points saw our computer lines actually beat the Vegas line at a 302-252-12 (55%) clip the last three years.** That's pretty solid and actually better than our own handicapping in some seasons. **Last week's plays went 7-4 and now the record for this year is 46-37.** Keep in mind, these computer lines don't take into consideration off-the-field factors like revenge or flat spots. They are basically a power-rating number difference between the two teams that also takes into consideration the home field advantage.

Of the 10 games where our computer is off more than 3 points compared to the Vegas line (highlighted), our favorite team this week to back would be **Indiana -11.**

The Comp column is the computer projected line and the Diff column is the difference between the Vegas line and the Computer line. "+" numbers in the difference column say back the underdog. "-" numbers in the difference column say back the favorite. Let us know if you have questions.

Thursday, Nov 26th	Line	Comp	Diff	Saturday, Nov 28th	Line	Comp	Diff
127 Colorado St				195 Kent St			
128 Air Force	-5.5	-3.1	+2.4	196 Buffalo	-7.5	-10.7	-3.2
129 New Mexico				197 Northern Illinois			
130 Utah St	+6.5	-1.5	+8.0	198 Western Michigan	-20	-14.4	+5.6
Friday, Nov 27th	Line	Comp	Diff	199 Ball St			
131 Central Florida				200 Toledo	-10	-7.4	+2.6
132 South Florida	+25	+21.8	+3.2	203 Bowling Green			
135 Notre Dame				204 Ohio	-24	-27.0	-3.0
136 North Carolina	+5	+4.2	+0.8	205 Miami, OH			
137 Stanford				206 Akron	+14	+16.3	-2.3
138 California	-1.5	-2.3	-0.8	211 San Jose St			
139 Oregon				212 Boise St	-12	-12.3	-0.3
140 Oregon St	+13.5	+14.2	-0.7	213 Troy			
143 Iowa St				214 Appalachian St	-13.5	-12.3	+1.2
144 Texas	+1	+0.1	+0.9	215 Arizona			
147 Nebraska				216 UCLA	-10	-8.7	+1.3
148 Iowa	-13.5	-12.4	+1.1	217 Colorado			
151 Wyoming				218 USC	-11.5	-15.0	-3.5
152 UNLV	+16	+13.7	+2.3	219 North Texas			
201 Central Michigan				220 UTSA	-3	-1.7	+1.3
202 Eastern Michigan	+7	+6.9	+0.1	221 Texas Tech			
281 Massachusetts				222 Oklahoma St	-11	-14.5	-3.5
282 Liberty	-37.5	-34.6	+2.9	223 Ohio St			
Saturday, Nov 28th	Line	Comp	Diff	224 Illinois	+28	+30.6	-2.6
155 TCU				225 Coastal Carolina			
156 Kansas	+24	+23.3	+0.7	226 Texas St	+17	+13.4	+3.6
157 Georgia Southern				227 South Alabama			
158 Georgia St	+1.5	+1.3	+0.2	228 Arkansas St	-6.5	-5.4	+1.1
161 Georgia				229 Auburn			
162 South Carolina	+21.5	+18.2	+3.3	230 Alabama	-24.5	-22.0	+2.5
163 Kentucky				231 Florida Atlantic			
164 Florida	-23	-21.4	+1.6	232 Middle Tennessee	+6.5	+5.0	+1.5
165 SMU				233 Kansas St			
166 East Carolina	+12.5	+11.9	+0.6	234 Baylor	-5.5	-3.1	+2.4
167 Pittsburgh				235 LSU			
168 Clemson	-24	-26.0	-2.0	236 Texas A&M	-14.5	-13.1	+1.4
173 Cincinnati				239 UTEP			
174 Temple	Cancelled			240 Rice	-11.5	-13.2	-1.7
175 Virginia				241 Mississippi St			
176 Florida St	+9	+8.2	+0.8	242 Ole Miss	-9.5	-10.5	-1.0
179 Northwestern				243 UL-Lafayette			
180 Michigan St	+13.5	+13.5	0.0	244 UL-Monroe	+28.5	+26.3	+2.2
181 Penn St				245 Nevada			
182 Michigan	-2	+0.1	+2.1	246 Hawaii	+7	+5.0	+2.0
183 NC State				285 Memphis			
184 Syracuse	+14	+13.0	+1.0	286 Navy	+13.5	+11.3	+2.2
185 Duke				289 Louisville			
186 Georgia Tech	+1	-1.3	+2.3	290 Boston College	-1	-1.3	-0.3
187 Oklahoma				295 Vanderbilt			
188 West Virginia	+10.5	+11.7	-1.2	296 Missouri	-14.5	-17.3	-2.8
191 Maryland				297 Utah			
192 Indiana	-11	-18.5	-7.5	298 Washington	-7	-4.8	+2.3
193 Rutgers				293 Western Kentucky			
194 Purdue	-11.5	-13.2	-1.7	294 Charlotte	NL	-3.8	

Week 13 CFB ATS Trends

1. This week's total between Notre Dame and North Carolina is 67. That's the 2nd highest total in ND football history.
2. Wyoming is 8-17-2 ATS laying 14 or more since late 1996. This week the Cowboys are 16.5-point favorites vs UNLV.
3. Eastern Michigan is 24-7-3 ATS (+3.5 ppg) as an underdog since mid-2016. The Eagles are 7-point home dogs to Central Michigan this week.
4. Cincinnati is a 36-point road favorite at Temple this week. That's the largest favorite role for the Bearcats on the road in school history.
5. Northwestern is just 8-15 ATS all-time as a double-digit favorite in Big Ten play. This week the Wildcats are 13.5-point favorites at Michigan St.
6. Akron has lost 20 straight games by an average of 25 ppg. The Zips are also 4-16 ATS (-9 ppg) in that stretch. This week Akron is a 14-point home underdog to Miami, OH.
7. Texas A&M is 1-7 SU (-15.9 ppg) and 0-7-1 ATS (-9.4 ppg) vs LSU since 2011. This week the Aggies are 14.5-point favorites at home vs the Tigers.
8. Rice is a 11.5-point favorite vs UTEP this week. The Owls haven't been that big of a conference favorite since 2014.
9. UL-Lafayette is a 28.5-point favorite at UL-Monroe this week. That's the largest away favorite role for ULL in school history.
10. South Carolina is 8-0 ATS as a 14-point or more underdog in SEC play since late 2015. This week the Gamecocks are 21.5-point underdogs at home to Georgia.

Betting CFB Openers

Every Sunday in Vegas at 11am PT, Circa Sports is the first book in the world to release CFB lines and we bet them every week. We think it's the best value bets we make all week. So far this season we are 82-54-3 (60%) on these Sunday bets with an average line value of 3.0 ppg! Last week we made 17 bets. We beat the closing line by an average of 1.8 ppg and went 8-8-1. Winning is hard. Below is some of what we bet this week.

(127) Colorado St +7...now +5.5...lean.
 (138) California -2...now -1.5...like.
 (163) Kentucky OVER 57.5...now 60.5...lean.
 (173) Cincinnati -32...now -36...pass.
 (183) NC State OVER 49.5...now 51.5...lean.
 (196) Buffalo -8...now -7.5...like.
 (199) Ball St +9...now +10...like.
 (205) Miami, OH OVER 54...still 54...like.
 (205) Miami, OH -14...still -14...like.
 (213) Troy +18...now +14...pass.
 (219) North Texas +6...now +3.5...lean.
 (220) UTSA UNDER 70.5...now 67...lean.
 (228) Ark St UNDER 64.5...now 63.5...lean.
 (229) Auburn +25...now +24.5...lean.
 (233) Kansas St OVER 44.5...now 46...lean.
 (239) UTEP OVER 41.5...now 44.5...lean.
 (240) Rice -7...now -11.5...pass.
 (245) Nevada -2...now -7...lean.
 (285) Memphis -11...now -13.5...like.
 (290) Boston College +2...now -1...like it!

4★ = BEST
3★ = BETTER
2★ = GOOD
1★ = FAIR

THE POWERS' PACK

- 1★ MINNESOTA (-3.5) over Carolina
- 1★ ATLANTA (+3) over Las Vegas
- 1★ San Francisco (+7) over L.A. RAMS

Games in Rotation Order
Thursday, November 26th

HOME TEAM IN CAPS

Houston 26 DETROIT 24. Note per ESPN's Daily Wager NFL favorites on Thanksgiving are 33-13 ATS since 2014. Now that we have gotten that out of the way, what a disgusting performance from the Lions last week. We bet them +1.5 on these pages last week, they closed 3-point favorites as the Panthers were depleted and they suffered the first shutout loss in 159 starts for QB Stafford. Meanwhile, the Texans more than showed up in their upset over New England last weekend. QB Deshaun Watson has 12 TD's and ZERO INT's in his last 5 starts. However, we're not thrilled with laying a FG with them on the road.

DALLAS 24 Washington 20. Washington crushed Dallas in the first meeting outgaining the Cowboys 397-142. Dallas got a big win last week pulling an outright upset over Minnesota to keep in the wild, yet sad NFC East race. Per sources a team meeting with Mike McCarthy smashing watermelons seemed to went over well in the locker room. Meanwhile, Washington took advantage of a Cincinnati team that lost Joe Burrow and the Football team is also in the hunt for a division title. Dallas is just 1-8 ATS their last 9 on Thanksgiving. We don't see much value here. We lean with Dallas but prefer the UNDER.

Baltimore at Pittsburgh was postponed until Sunday.

Sunday, November 29th

PITTSBURGH 25 Baltimore 22. One of our more head scratching losses on these pages came a few weeks ago in this match-up. Baltimore had a 457-221 yard edge but somehow lost to Pittsburgh because of 4 TO's. The Ravens have been fading with 3 losses in their last 4 games after losing outright at home to Tennessee last week. They did catch a break with this game being postponed until Sunday. Meanwhile, the unbeaten Steelers continue to cover point spreads as they are 8-2 ATS on the season and need to keep pace with the Chiefs who are nipping at their heels. 14 of the last 25 regular season matchups have been decided by 3 points or less. We think this one goes down to the wire as well.

1★ ATLANTA 27 Las Vegas 26. Not a great spot for the Raiders here off a prime-time SNF all-out effort vs the Chiefs (much to our dismay on these pages) and now they're playing across the country at 10am PT. Last week's loss to the Saints was not ideal for Atlanta but they are a Todd Gurley mental error away from being 4-1 SU/ATS under interim coach Morris. QB Matt Ryan was sacked 8 times and he threw 2 INT's in a game for the first time this season. We don't think that will happen again here.

NEW ENGLAND 25 Arizona 24. A very disappointing effort from the Pats last week vs the Texans especially after a pair of wins looked like it was going to turn their season around. Meanwhile, Arizona has extra prep after a loss to Seattle. Only in 2020, would you not scoff at the Cardinals being a road favorite at the Patriots! Note the Patriots are 4-0 SU and 4-0 ATS as a home dog since 2006 including an outright upset of Baltimore a few weeks ago. We would take the Pats as a best bet on these pages but have had horrific luck in their games this year.

N.Y. Giants 24 Cincinnati 17. The Giants come in fresh off a bye. They're 7-3 ATS this season and are firmly in a division race under first-year coach Joe Judge. Meanwhile, the Bengals should be deflated after losing QB Joe Burrow to serious injury last week as they were up 9-7 when he went down only to collapse in Washington. Brandon Allen will get the start here at QB. What a mess. The last time NY was laying this many on the road was 2016. However, the Giants have covered 8 straight games on the road. Make it 9 straight covers.

Cleveland 28 JACKSONVILLE 21. This is tied with the 2019 Jets games as the largest away favorite role for the Browns since they returned in 1999. The Browns are closing in on their first playoff appearance in nearly two decades after their win over the Eagles last week. We had the OVER on these pages in that one. The two teams had 3 trips inside the opponents' 10-yard line result in ZERO points. Can't get a break in the NFL this year (we have in CFB). Meanwhile, the Jags are just playing out the season at 1-9 and were crushed by Pittsburgh last week. Tough trusting the Browns in this rare spot but we certainly don't want Jacksonville here.

1★ MINNESOTA 27 Carolina 21. Seems like a good spot to back the Vikings here after a poor performance last week in an upset loss to Dallas. Minnesota had won and covered 3 straight prior. Meanwhile, the Panthers are playing a 12th straight week. We have to give them their props last week for crushing us on these pages with a 20-0 win over Detroit even with backup QB Philip Walker in the line-up. Teddy Bridgewater should be back for this one and Christian McCaffrey too. Still, we like Minnesota who is 46-22-3 ATS vs non-division opponents under head coach Mike Zimmer.

INDIANAPOLIS 28 Tennessee 24. These two just played a few weeks ago with Indianapolis cruising to a 34-17 victory on a Thursday Night. It is interesting to note the Colts despite playing on the road in a short week were favored in that one as they took a ton of money in the market. Now, we've seen Tennessee take money this week. Both teams got huge OT wins last week and both rallied from double-digit deficits. The Colts have dominated this series going 20-4 SU and 16-8 ATS in their last 24.

BUFFALO 31 L.A. Chargers 24. What do you know, the Chargers failed to cover a point spread last week due to some questionable coaching decisions. QB Justin Herbert deserves better as he is the first QB to throw at least 2 TD passes in his first 7 games. Meanwhile, the Bills come in fresh off a bye after they had to lick their wounds for a last second loss to the Cardinals. ESPN Stats and Info said rookie QB's from California teams are 1-14 SU in the Eastern Time Zone since the merger. Huge coaching mismatch here.

Miami 23 N.Y. JETS 19. Another historic line here with the Dolphins laying their biggest point spread on the road since 2008. We tried to tell you Miami was overrated but after coming up short fading them in back-to-back weeks, the Dolphins finally showed their true colors in a loss to Denver last week. Tua had 83 yards passing through 3Q's and was banged up after taking 3 sacks. Fitzpatrick replaced him late. The Dolphins are -171 ypg in Tua's four starts despite a 3-1 record (Tua will start here). It is tough backing the 0-10 Jets but they have covered 3 of their last 4 games and could get back Darnold.

New Orleans 24 DENVER 20. Even though the Saints impressed last week in an easy cover over the Falcons, we're not willing to lay nearly a full TD on the road here with Taysom Hill. Hill did go 18 of 23 for 233 yards along with 51 rushing yards and 2 TD's. However, the Broncos showed some life last week with an outright upset over the Dolphins. Denver had 189 yards rushing. Do note the Saints are now 6-0 SU and ATS the last two years without Drew Brees at QB. That keeps us off the Broncos as a top pick.

1★ San Fran (plus the points) L.A. RAMS 24 San Francisco 20. The banged up 49ers come in off a much-needed bye after they had lost and failed to cover in 3 straight games. San Francisco did pull the outright upset over the Rams earlier this season. Nick Mullens will get the start here at QB and we expect a solid effort. Meanwhile, the Rams are playing on a short week after their big win on MNF over the Bucs.

KANSAS CITY 31 Tampa Bay 27. Obviously, a marquee match-up that probably should get flexed to SNF. Tampa Bay has failed to cover in 3 of their last 4 games and they are off a disappointing loss to the Rams. It looks like they are getting worn down as they are playing their 12th straight game here. Meanwhile, the Chiefs crushed us on these pages last week in their non-cover vs the Raiders. Still have to be amazed with the skills Mahomes showed on that game-winning drive. Lean Chiefs and the OVER.

GREEN BAY 26 Chicago 17. After their hot start, the Bears have lost 4 straight games and when we recommended betting UNDER their season win total in our season preview, this is more what we expected from them. Note they've only been favored in one game this season! Meanwhile, you have to think the Packers are looking to take some frustrations out after blowing a double-digit lead last week to the Colts. The Packers have dominated this series for a quarter-century with a 40-13 SU and 34-18-1 ATS mark. More of the same here.

Monday, November 30th

Seattle 27 PHILADELPHIA 22. The Seahawks come in off extra rest after a key win vs the Cardinals last Thursday. After winning the Super Bowl three years ago, Philly is 22-22-1 SU and 18-26-1 ATS. After a bye week where they had a chance to take control of the sad NFC East division, they've lost to the Giants and continued to make mistakes in the red zone in a loss to the Browns. QB Carson Wentz has lost 9 fumbles, he's thrown 14 INT's, he's taken 40 sacks. He's overrated and now you see why they drafted a QB last year. We think Seattle is a little overrated but we want nothing to do with Philly at this point.

2020 NFL Schedules with Logs

Arizona (SU: 6-4, ATS: 5-5, O/U: 3-6-1)

Date	Opponent	Line	Score	ATS	O/U
9/13	at San Francisco	+6	24-20 W	u48	
9/20	Washington	-7	30-15 W	u46	
9/27	Detroit	-5	23-26 L	u55	
10/4	at Carolina	-3	21-31 L	p52	
10/11	at N.Y. Jets	-7	30-10 W	u48	
10/19	at Dallas	+1	38-10 W	u56	
10/25	Seattle-ot	+3	37-34 W	o55	
11/1					
11/8	Miami	-6	31-34 L	o49	
11/15	Buffalo	-3	32-30 L	o56	
11/19	at Seattle	+3	21-28 L	u57	
11/29	at New England				
12/6	L.A. Rams				
12/13	at N.Y. Giants				
12/20	Philadelphia				
12/27	San Francisco				
1/3	at L.A. Rams				

Atlanta (SU: 3-7, ATS: 4-6, O/U: 5-1)

Date	Opponent	Line	Score	ATS	O/U
9/13	Seattle	-1	25-38 L	o49	
9/20	at Dallas	+3	39-40 W	o54	
9/27	Chicago	-2	26-30 L	o46	
10/5	at Green Bay	+5	16-30 L	u56	
10/11	Carolina	-2	16-23 L	u53	
10/18	at Minnesota	+3	40-23 W	u53	
10/25	Detroit	-1	22-23 L	o54	
10/29	at Carolina	+1	25-17 W	u52	
11/8	Denver	-4	34-27 W	o50	
11/15					
11/22	at New Orleans	+3	9-24 L	u49	
11/29	Las Vegas				
12/6	New Orleans				
12/13	at L.A. Chargers				
12/20	Tampa Bay				
12/27	at Kansas City				
1/3	at Tampa Bay				

Baltimore (SU: 6-4, ATS: 4-5-1, O/U: 4-5-1)

Date	Opponent	Line	Score	ATS	O/U
9/13	Cleveland	-7	38-6 W	u47	
9/20	at Houston	-7	33-16 W	p49	
9/28	Kansas City	-3	20-34 L	u55	
10/4	at Washington	-14	31-17 P	o45	
10/11	Cincinnati	-12	27-7 W	u49	
10/18	at Philadelphia	-10	30-28 L	o46	
10/25					
11/1	Pittsburgh	-4	24-28 L	o44	
11/8	at Indianapolis	+1	24-10 W	u48	
11/15	at New England	-7	17-23 L	u44	
11/22	Tennessee-ot	-6	24-30 L	o50	
11/26	at Pittsburgh				
12/3	Dallas				
12/14	at Cleveland				
12/20	Jacksonville				
12/27	N.Y. Giants				
1/3	at Cincinnati				

Buffalo (SU: 7-3, ATS: 5-5, O/U: 7-2-1)

Date	Opponent	Line	Score	ATS	O/U
9/13	N.Y. Jets	-6	27-17 W	o39	
9/20	at Miami	-5	31-28 L	o42	
9/27	L.A. Rams	-2	35-32 W	o46	
10/4	at Las Vegas	-3	30-23 W	p53	
10/13	at Tennessee	-3	16-42 L	o52	
10/19	Kansas City	+5	17-26 L	u54	
10/25	at N.Y. Jets	-10	18-10 L	u46	
11/1	New England	-4	24-21 L	o41	
11/8	Seattle	+3	44-34 W	o55	
11/15	at Arizona	+3	30-32 W	o56	
11/22					
11/29	L.A. Chargers				
12/7	at San Francisco				
12/13	Pittsburgh				
12/20	at Denver				
12/28	at New England				
1/3	Miami				

Carolina (SU: 4-7, ATS: 6-5, O/U: 5-5-1)

Date	Opponent	Line	Score	ATS	O/U
9/13	Las Vegas	+3	30-34 L	o48	
9/20	at Tampa Bay	+7	17-31 L	o47	
9/27	at L.A. Chargers	+6	21-16 W	u43	
10/4	Arizona	+3	31-21 W	p52	
10/11	at Atlanta	+2	23-16 W	u53	
10/18	Chicago	-1	16-23 L	u45	
10/25	at New Orleans	+7	24-27 W	o49	
10/29	Atlanta	-1	17-25 L	u52	
11/8	at Kansas City	+10	31-33 W	o51	
11/15	Tampa Bay	+6	23-36 L	o49	
11/22	Detroit	+3	20-0 W	u47	
11/29	at Minnesota				
12/6					
12/13	Denver				
12/20	at Green Bay				
12/27	at Washington				
1/3	New Orleans				

Chicago (SU: 5-5, ATS: 5-5, O/U: 3-7-1)

Date	Opponent	Line	Score	ATS	O/U
9/13	at Detroit	+2	27-23 W	o42	
9/20	N.Y. Giants	-4	17-13 L	u42	
9/27	at Atlanta	+2	30-26 W	o46	
10/4	Indianapolis	+3	11-19 L	u43	
10/8	Tampa Bay	+3	20-19 W	u44	
10/18	at Carolina	+1	23-16 W	u45	
10/26	at L.A. Rams	+6	10-24 L	u44	
11/1	New Orleans-ot	+5	23-26 W	o41	
11/8	at Tennessee	+6	17-24 L	u46	
11/16	Minnesota	+3	13-19 L	u44	
11/22					
11/29	at Green Bay				
12/6	Detroit				
12/13	Houston				
12/20	at Minnesota				
12/27	at Jacksonville				
1/3	Green Bay				

Cincinnati (SU: 2-7-1, ATS: 6-3-1, O/U: 6-4)

Date	Opponent	Line	Score	ATS	O/U
9/13	L.A. Chargers	+3	13-16 P	u41	
9/17	at Cleveland	+6	30-35 W	o44	
9/27	at Philadelphia	+5	23-23 W	u47	
10/4	Jacksonville	+1	32-25 W	o49	
10/11	at Baltimore	-12	3-27 L	u49	
10/18	at Indianapolis	+7	27-31 W	o46	
10/25	Cleveland	+4	34-37 W	o50	
11/1	Tennessee	+7	31-20 W	o49	
11/8					
11/15	at Pittsburgh	+6	10-36 L	u45	
11/22	at Washington	+1	9-20 L	u48	
11/29	N.Y. Giants				
12/6	at Miami				
12/13	Dallas				
12/21	Pittsburgh				
12/27	at Houston				
1/3	Baltimore				

Cleveland (SU: 7-3, ATS: 4-6, O/U: 5-5)

Date	Opponent	Line	Score	ATS	O/U
9/13	at Baltimore	+7	6-38 L	u47	
9/17	Cincinnati	-6	35-30 L	o44	
9/27	Washington	-7	34-20 W	o45	
10/4	at Dallas	+1	49-38 W	o56	
10/11	Indianapolis	-1	32-23 W	o48	
10/18	at Pittsburgh	+3	38-38 W	o50	
10/25	at Cincinnati	-4	37-34 L	o50	
11/1	Las Vegas	-1	6-16 L	u47	
11/8					
11/15	Houston	-4	10-7 L	u46	
11/22	Philadelphia	-2	22-17 W	u45	
11/29	at Jacksonville				
12/6	at Tennessee				
12/14	Baltimore				
12/20	at N.Y. Giants				
12/27	at N.Y. Jets				
1/3	Pittsburgh				

Dallas (SU: 3-7, ATS: 2-8, O/U: 5-5)

Date	Opponent	Line	Score	ATS	O/U
9/13	at L.A. Rams	PK	17-20 L	u52	
9/20	Atlanta	-3	40-39 L	o54	
9/27	at Seattle	+5	31-38 L	o57	
10/4	Cleveland	-3	38-49 L	o56	
10/11	N.Y. Giants	-7	37-34 L	o52	
10/19	Arizona	-1	10-19 L	u49	
10/25	at Washington	-1	3-25 L	u44	
11/1	at Philadelphia	+10	9-23 L	u43	
11/8	Pittsburgh	+14	19-24 W	o44	
11/15					
11/22	at Minnesota	+7	31-28 W	o50	
11/26	Washington				
12/3	at Baltimore				
12/13	at Cincinnati				
12/20	San Francisco				
12/27	Philadelphia				
1/3	at N.Y. Giants				

Denver (SU: 4-6, ATS: 6-4, O/U: 5-5)

Date	Opponent	Line	Score	ATS	O/U
9/14	Tennessee	+3	14-16 W	u41	
9/20	at Pittsburgh	+6	21-26 W	o42	
9/27	Tampa Bay	+6	10-28 L	u41	
10/1	at N.Y. Jets	+1	37-28 W	u41	
10/11					
10/18	at New England	+7	18-12 W	u44	
10/25	Kansas City	+7	16-43 L	o46	
11/1	N.Y. Giants	+3	31-30 W	o44	
11/8	at Atlanta	+4	27-34 L	o50	
11/15	at Las Vegas	+3	12-37 L	u50	
11/22	Miami	+4	20-13 W	u46	
11/29	New Orleans				
12/6	at Kansas City				
12/13	at Carolina				
12/20	Buffalo				
12/27	at L.A. Chargers				
1/3	at Denver				

Detroit (SU: 4-6, ATS: 4-6, O/U: 6-4)

Date	Opponent	Line	Score	ATS	O/U
9/13	Chicago	-2	23-27 L	o42	
9/20	at Green Bay	+7	21-42 L	o51	
9/27	at Arizona	+5	26-23 W	u55	
10/4	New Orleans	+3	29-35 L	o51	
10/11					
10/18	at Jacksonville	-3	34-16 W	u53	
10/25	at Atlanta	+1	23-22 W	u55	
11/1	Indianapolis	+3	21-41 L	o49	
11/8	at Minnesota	+3	20-34 L	o51	
11/15	Washington	-2	30-27 W	o45	
11/22	at Carolina	-3	0-20 L	u47	
11/26	Houston				
12/6	at Chicago				
12/13	Green Bay				
12/20	at Tennessee				
12/27	Tampa Bay				
1/3	Minnesota				

Green Bay (SU: 7-3, ATS: 6-4, O/U: 6-4)

Date	Opponent	Line	Score	ATS	O/U
9/13	at Minnesota	+1	43-34 W	o44	
9/20	Detroit	-7	42-21 W	o51	
9/27	at New Orleans	+3	37-30 W	o52	
10/5	Atlanta	-5	30-16 W	u56	
10/11					
10/18	at Tampa Bay	-3	10-38 L	u55	
10/25	at Houston	-3	35-20 W	u55	
11/1	Minnesota	-5	22-28 L	o47	
11/8	at San Francisco	-6	34-17 W	o47	
11/15	Jacksonville	-13	24-20 L	u47	
11/22	at Indianapolis-ot	+1	31-34 L	o52	
11/29	Chicago				
12/6	Philadelphia				
12/13	at Detroit				
12/20	Carolina				
12/27	Tennessee				
1/3	at Chicago				

Houston (SU: 3-7, ATS: 3-7, O/U: 5-4-1)

Date	Opponent	Line	Score	ATS	O/U
9/10	at Kansas City	+9	20-34 L	o53	
9/20	Baltimore	+7	16-33 L	o49	
9/27	at Pittsburgh	+4	21-28 L	o46	
10/4	Minnesota	-3	23-31 L	o53	
10/11	Jacksonville	-6	30-14 W	u54	
10/18	at Tennessee-ot	+3	36-42 L	u52	
10/25	Green Bay	+3	20-35 L	u55	
11/1					
11/8	at Jacksonville	-6	27-25 L	o48	
11/15	at Cleveland	+4	7-10 W	u46	
11/22	New England	+2	27-20 W	u49	
11/26	Detroit				
12/6	Indianapolis				
12/13	at Chicago				
12/20	at Indianapolis				
12/27	Cincinnati				
1/3	Tennessee				

Indianapolis (SU: 7-3, ATS: 6-4, O/U: 6-4)

Date	Opponent	Line	Score	ATS	O/U
9/13	at Jacksonville	-7	20-		

2020 CFB Schedules with Logs

Air Force (SU: 2-2, ATS: 2-2, O/U: 1-2-1)

Date	Opponent	Line Score	ATS/O/U
10/3	Navy	+6 ⁺ 40-7	W p47
10/10			
10/17			
10/24	at San Jose St	-7 ⁻ 6-17	L u64
10/31	Boise State	+13 30-49	W o49
11/7	at Army	Cancelled	
11/14	at Wyoming	Cancelled	
11/20	New Mexico	-8 28-0	W u55 ⁺
11/26	Colorado State		
12/3	at Utah State		

Akron (SU: 0-3, ATS: 1-2, O/U: 2-1)

Date	Opponent	Line Score	ATS/O/U
11/4	Western Mich	+20 13-58	L o52
11/10	at Ohio	+27 10-24	W u59
11/17	at Kent State	+25 ⁺ 35-69	L o60
11/28	Miami (OH)		
12/5	Bowling Green		
12/12	at Buffalo		

Alabama (SU: 7-0, ATS: 5-2, O/U: 5-2)

Date	Opponent	Line Score	ATS/O/U
9/26	at Missouri	-28 ⁻ 38-19	L o55 ⁻
10/3	Texas A&M	-18 52-24	W o54
10/10	at Ole Miss	-24 63-48	L o74
10/17	Georgia	-6 41-24	W o57
10/24	at Tennessee	-22 48-17	W u66
10/31	Mississippi St	-29 41-0	W u64
11/7			
11/14	at LSU	Cancelled	
11/21	Kentucky	-31 ⁻ 63-3	W o58
11/28	Auburn		
12/5	at Arkansas		

Appalachian St (SU: 6-2, ATS: 1-7, O/U: 2-6)

Date	Opponent	Line Score	ATS/O/U
9/12	Charlotte	-16 ⁻ 35-20	L u59 ⁻
9/19	at Marshall	-6 7-17	L u60
9/26	Campbell	-33 ⁻ 52-21	L o53 ⁻
10/3			
10/10			
10/17			
10/22	Arkansas State	-13 ⁻ 45-17	W u69 ⁻
10/31	at UL-Monroe	-28 ⁻ 31-13	L u57 ⁻
11/7	at Texas State	-21 ⁻ 38-17	L u58
11/14	Georgia State	-18 17-13	L u63
11/21	at Coa. Carolina	+3 23-34	L o48
11/28	Troy		
12/4	UL-Lafayette		
12/12	at Georgia Southern		

Arizona (SU: 0-2, ATS: 1-1, O/U: 1-1)

Date	Opponent	Line Score	ATS/O/U
11/7	at Utah	Cancelled	
11/14	USC	+15 30-34	W u67 ⁺
11/21	at Washington	+12 27-44	L o53 ⁻
11/28	at UCLA		
12/5	Colorado		
12/11	Arizona State		
12/19			

Arizona State (SU: 0-1, ATS: 1-0, O/U: 0-1)

Date	Opponent	Line Score	ATS/O/U
11/7	at USC	+11 ⁺ 27-28	W u57
11/14	California	Cancelled	
11/21	at Colorado	Cancelled	
11/29	Utah		
12/5	UCLA		
12/11	at Arizona		

Arkansas (SU: 3-5, ATS: 6-2, O/U: 3-5)

Date	Opponent	Line Score	ATS/O/U
9/26	Georgia	+28 10-37	W u53
10/3	at Mississippi St	+16 ⁺ 21-14	W u68
10/10	at Auburn	+13 ⁺ 28-30	W o46
10/17	Ole Miss	-1 33-21	W u77
10/24			
10/31	at Texas A&M	+14 ⁺ 31-42	W o54
11/7	Tennessee	+2 24-13	W u54
11/14	at Florida	+17 35-63	L o62
11/21	LSU	+1 ⁺ 24-27	L u65 ⁺
11/28	at Missouri		
12/5	Alabama		

Arkansas State (SU: 3-6, ATS: 5-4, O/U: 5-4)

Date	Opponent	Line Score	ATS/O/U
9/5	at Memphis	+18 ⁺ 24-37	W u72
9/12	at Kansas State	+14 ⁺ 35-31	W o55 ⁺
9/19			
9/26	Tulsa	Cancelled	
10/3	at Coastal Carolina	-3 ⁻ 23-52	L o64 ⁻
10/10	Central Arkansas	-15 ⁻ 50-27	W o55 ⁻
10/15	Georgia State	-3 ⁻ 59-52	L o72 ⁻
10/22	at Appalachian St	+13 ⁺ 17-45	L u69 ⁺
10/31	Troy	-3 ⁻ 10-38	L u69 ⁻
11/7	at UL-Lafayette	+14 ⁺ 20-27	W u68 ⁺
11/14			
11/21	at Texas State	-4 ⁻ 45-47	L o69 ⁻
11/28	South Alabama		
12/5	UL-Monroe		
12/12	Incarinate Word		

Army (SU: 7-2, ATS: 5-4, O/U: 4-5)

Date	Opponent	Line Score	ATS/O/U
9/5	Middle Tenn	-3 ⁻ 42-0	W u53 ⁻
9/12	UL-Monroe	-24 37-7	W u53 ⁻
9/19	BYU	Cancelled	
9/26	at Cincinnati	+12 ⁺ 10-24	L u44 ⁺
10/3	Abilene Christian	-31 ⁻ 55-23	W o50
10/10	The Citadel	-30 ⁻ 14-9	L u46
10/17	at UTSA	-8 ⁻ 28-16	W u46
10/24	Mercer	-30 ⁻ 49-3	W o47
10/31			
11/7	Air Force	Cancelled	
11/14	at Tulane	+3 12-38	L o46
11/21	Georgia Southern	-3 28-27	L o38 ⁻
11/28			
12/5	† Navy		

Auburn (SU: 5-2, ATS: 4-3, O/U: 1-6)

Date	Opponent	Line Score	ATS/O/U
9/26	Kentucky	-6 ⁻ 29-13	W u46 ⁻
10/3	at Georgia	+7 ⁺ 6-27	L u44 ⁺
10/10	Arkansas	-13 ⁻ 30-28	L o46
10/17	at South Carolina	-3 22-30	L u53
10/24	at Ole Miss	-3 ⁻ 35-28	W u73
10/31	LSU	PK 48-11	W o63
11/7			
11/14			
11/21	Tennessee	-10 ⁻ 30-17	W u51
11/28	at Alabama		
12/5	Texas A&M		
12/12	at Mississippi St		

Ball State (SU: 2-1, ATS: 0-3, O/U: 2-1)

Date	Opponent	Line Score	ATS/O/U
11/4	at Miami (OH)	-1 31-38	L o56 ⁻
11/11	Eastern Michigan	-8 38-31	L o62
11/18	Northern Illinois	-14 ⁻ 31-25	L u59
11/28	at Toledo		
12/5	at Central Michigan		
12/12	Western Michigan		

Baylor (SU: 1-5, ATS: 2-3-1, O/U: 2-3-1)

Date	Opponent	Line Score	ATS/O/U
9/19	Houston	Cancelled	
9/26	Houston	-17 47-14	W p61
10/3	at West Virginia	-1 21-27	L u54
10/10			
10/17			
10/24	at Texas	+11 16-27	P u61 ⁺
10/31	TCU	+2 ⁺ 23-33	L o47
11/7	at Iowa State	+14 31-38	W o47
11/14	at Texas Tech	PK 23-24	L u54
11/21			
11/28	Kansas State		
12/5	at Oklahoma		
12/12	Oklahoma State		

Boise State (SU: 4-1, ATS: 3-2, O/U: 5-0)

Date	Opponent	Line Score	ATS/O/U
10/24	Utah State	-17 42-13	W o51
10/31	at Air Force	-13 49-30	W o49
11/6	BYU	+5 ⁺ 17-51	L o63
11/12	Colorado State	-14 52-21	W o62
11/21	at Hawaii	-12 ⁻ 40-32	L o55 ⁻
11/28	San Jose State		
12/4	at UNLV		
12/12	at Wyoming		

Boston College (SU: 5-4, ATS: 5-4, O/U: 4-5)

Date	Opponent	Line Score	ATS/O/U
9/19	at Duke	+3 ⁺ 26-6	W u50
9/26	Texas State	-21 ⁻ 24-21	W u52
10/3	North Carolina	+14 ⁺ 22-26	W u57
10/10	Pittsburgh	+6 ⁺ 31-30	W o42
10/17	at Virginia Tech	+13 14-40	L o62
10/24	Georgia Tech	-3 ⁻ 48-27	W o56
10/31	at Clemson	+26 ⁺ 28-34	W o57
11/7	at Syracuse	-14 ⁻ 16-13	L u54
11/14	Notre Dame	+13 31-45	W o51
11/21			
11/28	Louisville		
12/5	at Virginia		
12/12			

Bowling Green (SU: 0-3, ATS: 1-2, O/U: 2-1)

Date	Opponent	Line Score	ATS/O/U
11/4	at Toledo	+24 3-38	L u63 ⁺
11/10	Kent State	+20 ⁺ 24-62	L o55 ⁺
11/17	Buffalo	+31 ⁺ 17-42	W o58 ⁺
11/28	at Ohio		
12/5	at Akron		
12/12	Miami (OH)		

Buffalo (SU: 3-0, ATS: 2-1, O/U: 2-1)

Date	Opponent	Line Score	ATS/O/U
11/4	at No. Illinois	-14 ⁻ 49-30	W o53 ⁻
11/10	Miami (OH)	-7 42-10	W o56
11/17	at Bowling Green	-31 ⁻ 42-17	L o58 ⁻
11/28	Kent State		
12/5	at Ohio		
12/12	Akron		

BYU (SU: 9-0, ATS: 7-1-1, O/U: 5-4)

Date	Opponent	Line Score	ATS/O/U
9/7	at Navy	-1 55-3	W o48 ⁻
9/12			
9/19	at Army	Cancelled	
9/26	Troy	-14 ⁻ 48-7	W u59
10/2	Louisiana Tech	-24 45-14	W o61
10/10	UTSA	-34 27-20	L u63
10/16	at Houston	-3 43-26	W o62
10/24	Texas State	-30 52-14	W o61
10/31	W. Kentucky	-31 41-10	P u52
11/6	at Boise St	-5 ⁻ 51-17	W o63
11/14			
11/21	North Alabama	-51 66-14	W o63
11/28			
12/5			
12/12	San Diego St		

California (SU: 0-2, ATS: 0-2, O/U: 1-1)

Date	Opponent	Line Score	ATS/O/U
11/7	Washington	Cancelled	
11/15	at UCLA	-3 ⁻ 10-34	L u57 ⁻
11/21	at Oregon State	-1 27-31	L o46 ⁻
11/27	Stanford		
12/5	Oregon		
12/12	at Washington State		

Central Michigan (SU: 2-1, ATS: 2-1, O/U: 2-1)

Date	Opponent	Line Score	ATS/O/U
11/4	Ohio	+2 ⁺ 30-27	W o54 ⁺
11/11	at No. Illinois	-6 40-10	W u57 ⁻
11/18	Western Mich	+1 44-52	L o59 ⁻
11/27	at Eastern Michigan		
12/5	Ball State		
12/12	at Toledo		

Charlotte (SU: 2-3, ATS: 3-2, O/U: 3-2)

Date	Opponent	Line Score	ATS/O/U
9/12	at Appalachian St	+16 ⁺ 20-35	W u59 ⁺
9/17	at North Carolina	Cancelled	
9/26	Georgia State	Cancelled	
10/3	at Florida Atlantic	+5 17-21	W o62
10/10	at North Texas	-3 49-21	W o66
10/17			
10/24	UTEP	-17 ⁻ 38-28	L o50
10/31	at Duke	+10 ⁺ 19-53	L o55
11/7	at Middle Tenn	Cancelled	
11/14	Gardner-Webb	Cancelled	
11/21	at Marshall	Cancelled	
12/1	Western Kentucky		
12/5	FIU		

Cincinnati (SU: 8-0, ATS: 5-3, O/U: 4-4)

Date	Opponent	Line Score	ATS/O/U
9/19	Austin Peay	-39 ⁻ 55-20	L u53 ⁻

Kansas St (SU: 4-4, ATS: 5-3, O/U: 4-4)

Table with columns: Date, Opponent, Line Score, ATS, O/U. Rows include Arkansas State, Oklahoma, Texas Tech, Kansas, Oklahoma State, Iowa State, Baylor, Texas.

Kent State (SU: 3-0, ATS: 2-1, O/U: 2-1)

Table with columns: Date, Opponent, Line Score, ATS, O/U. Rows include Eastern Michigan, Bowling Green, Akron, Buffalo, Miami (OH), Ohio.

Kentucky (SU: 3-5, ATS: 3-5, O/U: 3-5)

Table with columns: Date, Opponent, Line Score, ATS, O/U. Rows include Auburn, Mississippi State, Tennessee, Missouri, Georgia, Vanderbilt, Alabama, Florida, South Carolina.

Liberty (SU: 8-1, ATS: 7-2, O/U: 6-3)

Table with columns: Date, Opponent, Line Score, ATS, O/U. Rows include WKU, FIU, North Alabama, UL-Monroe, Syracuse, Southern Miss, Virginia Tech, Western Carolina, NC State, Massachusetts, Coastal Carolina.

Louisiana Tech (SU: 4-3, ATS: 3-4, O/U: 4-3)

Table with columns: Date, Opponent, Line Score, ATS, O/U. Rows include Southern Miss, Houston Baptist, BYU, UTEP, Marshall, UTSA, UAB-2ot, Rice, UL-Monroe, FIU, North Texas.

Louisville (SU: 3-6, ATS: 4-4-1, O/U: 5-4)

Table with columns: Date, Opponent, Line Score, ATS, O/U. Rows include Kentucky, Miami (FL), Pittsburgh, Georgia Tech, Notre Dame, Florida State, Virginia Tech, Virginia, Syracuse, Wake Forest, Boston College.

LSU (SU: 3-3, ATS: 3-3, O/U: 3-3)

Table with columns: Date, Opponent, Line Score, ATS, O/U. Rows include Mississippi State, Vanderbilt, Missouri, South Carolina, Auburn, Alabama, Arkansas, Texas A&M, Ole Miss, Florida.

Marshall (SU: 7-0, ATS: 5-2, O/U: 5-2)

Table with columns: Date, Opponent, Line Score, ATS, O/U. Rows include East Kentucky, Appalachian St, W. Kentucky, Louisiana Tech, Florida Atlantic, Massachusetts, Middle Tennessee, Charlotte, Rice, FIU.

Maryland (SU: 2-1, ATS: 2-1, O/U: 1-2)

Table with columns: Date, Opponent, Line Score, ATS, O/U. Rows include Northwestern, Minnesota-ot, Penn State, Ohio State, Michigan State, Indiana, Michigan, Rutgers.

Massachusetts (SU: 0-3, ATS: 2-1, O/U: 1-2)

Table with columns: Date, Opponent, Line Score, ATS, O/U. Rows include Ga Southern.

Memphis (SU: 5-2, ATS: 2-5, O/U: 3-2-1)

Table with columns: Date, Opponent, Line Score, ATS, O/U. Rows include Arkansas State, Marshall, SMU, Florida Atl, Liberty.

Memphis (SU: 5-2, ATS: 2-5, O/U: 3-2-1)

Table with columns: Date, Opponent, Line Score, ATS, O/U. Rows include Arkansas State, UTSA, SMU, UCF, Cincinnati, USF, Navy, Stephen F. Austin, Tulane, Houston.

Miami, FL (SU: 7-1, ATS: 5-3, O/U: 4-4)

Table with columns: Date, Opponent, Line Score, ATS, O/U. Rows include UAB, Louisville, Florida State, Clemson, Pittsburgh, Virginia, NC State, Virginia Tech.

Miami, OH (SU: 1-1, ATS: 1-1, O/U: 1-1)

Table with columns: Date, Opponent, Line Score, ATS, O/U. Rows include Ball State, Buffalo, Ohio, Kent State, Bowling Green.

Michigan (SU: 2-3, ATS: 1-4, O/U: 4-1)

Table with columns: Date, Opponent, Line Score, ATS, O/U. Rows include Minnesota, Michigan State, Indiana, Wisconsin, Rutgers-3ot, Penn State, Maryland, Ohio State.

Michigan State (SU: 1-3, ATS: 1-3, O/U: 2-2)

Table with columns: Date, Opponent, Line Score, ATS, O/U. Rows include Rutgers, Michigan, Iowa, Indiana, Maryland, Northwestern, Ohio State, Penn State.

Middle Tennessee (SU: 3-6, ATS: 5-4, O/U: 5-4)

Table with columns: Date, Opponent, Line Score, ATS, O/U. Rows include Army, Troy, UTSA, West Kentucky, FIU, North Texas, Rice-2ot, Charlotte, Marshall, Minnesota.

Minnesota (SU: 2-3, ATS: 2-3, O/U: 3-2)

Table with columns: Date, Opponent, Line Score, ATS, O/U. Rows include Michigan, Maryland-ot, Illinois, Iowa, Purdue, Wisconsin, Northwestern, Nebraska.

Mississippi St (SU: 2-5, ATS: 2-5, O/U: 2-5)

Table with columns: Date, Opponent, Line Score, ATS, O/U. Rows include LSU, Arkansas, Kentucky, Texas A&M, Alabama, Vanderbilt, Georgia, Ole Miss, Missouri, Auburn.

Missouri (SU: 3-3, ATS: 4-2, O/U: 2-4)

Table with columns: Date, Opponent, Line Score, ATS, O/U. Rows include Alabama, Tennessee, LSU, Kentucky, Florida.

Navy (SU: 3-4, ATS: 3-4, O/U: 5-1-1)

Table with columns: Date, Opponent, Line Score, ATS, O/U. Rows include BYU, Tulane, Air Force, Temple, East Carolina, Houston, Tulsa, USF, Memphis, Army.

NC State (SU: 6-3, ATS: 6-3, O/U: 6-3)

Table with columns: Date, Opponent, Line Score, ATS, O/U. Rows include Wake Forest, Virginia Tech, Pittsburgh, Virginia, Duke, North Carolina.

Ohio State (SU: 1-1, ATS: 0-2, O/U: 1-1)

Table with columns: Date, Opponent, Line Score, ATS, O/U. Rows include Central Mich, Akron, Miami (OH), Bowling Green, Buffalo, Kent State.

Ohio State (SU: 4-0, ATS: 2-2, O/U: 2-1-1)

Table with columns: Date, Opponent, Line Score, ATS, O/U. Rows include Nebraska, Penn State, Rutgers, Maryland, Indiana, Illinois, Michigan State, Michigan.

Oklahoma (SU: 6-2, ATS: 5-3, O/U: 5-3)

Table with columns: Date, Opponent, Line Score, ATS, O/U. Rows include Missouri State, Kansas State, Iowa State, Texas-4ot, TCU, Texas Tech, Kansas, Oklahoma State, West Virginia, Baylor.

Oklahoma St (SU: 5-2, ATS: 3-4, O/U: 2-5)

Table with columns: Date, Opponent, Line Score, ATS, O/U. Rows include Tulsa, West Virginia, Kansas, Iowa State, Texas-ot, Kansas State.

North Carolina (SU: 6-2, ATS: 4-4, O/U: 5-3)

Table with columns: Date, Opponent, Line Score, ATS, O/U. Rows include Syracuse, Charlotte, Boston College, Virginia Tech, Florida State, NC State, Virginia, Duke, Wake Forest, Notre Dame, Western Carolina, Miami (FL).

North Texas (SU: 3-3, ATS: 3-3, O/U: 4-2)

Table with columns: Date, Opponent, Line Score, ATS, O/U. Rows include Houston Baptist, SMU, Houston, Southern Miss, Charlotte, Middle Tenn, UAB, Rice, UTSA, Louisiana Tech, UTEP.

Northern Illinois (SU: 0-3, ATS: 1-2, O/U: 1-2)

Table with columns: Date, Opponent, Line Score, ATS, O/U. Rows include Buffalo, Central Michigan, Ball State, Western Michigan, Toledo, Eastern Michigan.

Northwestern (SU: 5-0, ATS: 4-0-1, O/U: 0-5)

Table with columns: Date, Opponent, Line Score, ATS, O/U. Rows include Maryland, Iowa, Nebraska, Purdue, Wisconsin, Michigan State, Minnesota, Illinois.

Notre Dame (SU: 8-0, ATS: 4-4, O/U: 5-3)

Table with columns: Date, Opponent, Line Score, ATS, O/U. Rows include Duke, USF, Florida State, Louisville, Pittsburgh, Georgia Tech, Clemson-2ot, Boston College, North Carolina, Syracuse, Wake Forest.

Ohio State (SU: 1-1, ATS: 0-2, O/U: 1-1)

Table with columns: Date, Opponent, Line Score, ATS, O/U. Rows include Central Mich, Akron, Miami (OH), Bowling Green, Buffalo, Kent State.

Ohio State (SU: 4-0, ATS: 2-2, O/U: 2-1-1)

Table with columns: Date, Opponent, Line Score, ATS, O/U. Rows include Nebraska, Penn State, Rutgers, Maryland, Indiana, Illinois, Michigan State, Michigan.

Oklahoma (SU: 6-2, ATS: 5-3, O/U: 5-3)

Table with columns: Date, Opponent, Line Score, ATS, O/U. Rows include Missouri State, Kansas State, Iowa State, Texas-4ot, TCU, Texas Tech, Kansas, Oklahoma State, West Virginia, Baylor.

Oklahoma St (SU: 5-2, ATS: 3-4, O/U: 2-5)

Table with columns: Date, Opponent, Line Score, ATS, O/U. Rows include Tulsa, West Virginia, Kansas, Iowa State, Texas-ot, Kansas State.

North Carolina (SU: 6-2, ATS: 4-4, O/U: 5-3)

Table with columns: Date, Opponent, Line Score, ATS, O/U. Rows include Syracuse, Charlotte, Boston College, Virginia Tech, Florida State, NC State, Virginia, Duke, Wake Forest, Notre Dame, Western Carolina, Miami (FL).

Oregon (SU: 3-0, ATS: 2-1, O/U: 2-0-1)

Table with columns: Date, Opponent, Line Score, ATS, O/U. Rows include Stanford, Washington St, UCLA, Oregon State, California, Washington.

Oregon State (SU: 1-2, ATS: 2-1, O/U: 2-1)

Table with columns: Date, Opponent, Line Score, ATS, O/U. Rows include Washington St, Washington, California, Oregon, Utah, Stanford.

Penn State (SU: 0-5, ATS: 0-5, O/U: 2-2-1)

Table with columns: Date, Opponent, Line Score, ATS, O/U. Rows include Indiana-ot, Ohio State, Maryland, Nebraska, Iowa, Michigan, Rutgers, Michigan State.

Pittsburgh (SU: 5-4, ATS: 2-5-1, O/U: 6-2)

Table with columns: Date, Opponent, Line Score, ATS, O/U. Rows include Austin Peay, Syracuse, Louisville, NC State, Boston Coll-ot, Miami (FL), Notre Dame, Florida State, Virginia Tech, Clemson, Georgia Tech.

Purdue (SU: 2-2, ATS: 1-3, O/U: 1-3)

Table with columns: Date, Opponent, Line Score, ATS, O/U. Rows include Iowa, Illinois, Wisconsin, Northwester, Minnesota, Rutgers, Nebraska, Indiana.

Rice (SU: 1-2, ATS: 1-2, O/U: 1-2)

Table with columns: Date, Opponent, Line Score, ATS, O/U. Rows include Middle Tenn-2ot, Southern Miss-1, UTSA, Louisiana Tech, North Texas, UTEP, Marshall, UAB.

Rutgers (SU: 1-4, ATS: 3-2, O/U: 4-1)

Table with columns: Date, Opponent, Line Score, ATS, O/U. Rows include Michigan St, Indiana, Ohio State, Illinois, Michigan-3ot, Penn State, Maryland.

San Diego State (SU: 3-2, ATS: 3-2, O/U: 3-3)

Table with columns: Date, Opponent, Line Score, ATS, O/U. Rows include UNLV, Utah State, San Jose State, Hawaii, Nevada, Fresno State, Colorado State, BYU.

San Jose State (SU: 4-0, ATS: 3-0-1, O/U: 1-3)

Table with columns: Date, Opponent, Line Score, ATS, O/U. Rows include Air Force, New Mexico, San Diego St, UNLV, Fresno State, Boise State, Hawaii, Nevada.

SMU (SU: 7-2, ATS: 5-4, O/U: 5-4)

Table with columns: Date, Opponent, Line Score, ATS, O/U. Rows include Texas State, North Texas, Stephen F. Austin, Memphis, Tulane-ot, Cincinnati, Navy, Temple, Tulsa, Houston, East Carolina.

South Alabama (SU: 3-6, ATS: 4-4-1, O/U: 1-8)

Date	Opponent	Line	Score	ATS/O/U
9/3	at Southern Miss	+12	32-21 W	u55
9/12	Tulane	+11	24-27 W	u51
9/19				
9/24	UAB	+7	10-42 L	o47
10/3				
10/10				
10/17	Texas State	-5	30-20 W	u57
10/22	UL-Monroe	-14	38-14 W	u52
10/29	at Ga Southern	+3	17-24 L	u52
11/7	at Coastal Carolina	-17	6-23 P	u57
11/14	at UL-Lafayette	+14	10-38 L	u53
11/21	Georgia State	+3	14-31 L	u58
11/28	at Arkansas State			
12/5	Troy			

South Carolina (SU: 2-6, ATS: 3-4-1, O/U: 5-3)

Date	Opponent	Line	Score	ATS/O/U
9/26	Tennessee	+4	27-31 P	o45
10/3	at Florida	+15	24-38 W	o56
10/10	at Vanderbilt	-14	41-7 W	o41
10/17	Auburn	+3	30-22 W	u53
10/24	at LSU	+4	24-52 L	o54
10/31				
11/7	Texas A&M	+9	3-48 L	u58
11/14	at Ole Miss	+12	42-59 L	o72
11/21	Missouri	+4	10-17 L	u57
11/28	Georgia			
12/5	at Kentucky			

Southern Miss (SU: 2-7, ATS: 3-6, O/U: 3-6)

Date	Opponent	Line	Score	ATS/O/U
9/3	South Alabama	-12	21-32 L	u55
9/12				
9/19	Louisiana Tech	-7	30-31 L	o59
9/26	Tulane	+3	24-66 L	o54
10/3	at North Texas	+1	41-31 W	u75
10/10				
10/17				
10/24	at Liberty	+14	35-56 L	o59
10/31	Rice	+1	6-30 L	u58
11/7	North Alabama	-17	24-13 L	u54
11/14	at W. Kentucky	+8	7-10 W	u45
11/21	UTSA	+9	20-23 W	u53
11/27	at UAB			
12/4	at UTEP			
12/10	Florida Atlantic			

Stanford (SU: 0-2, ATS: 0-2, O/U: 1-0-1)

Date	Opponent	Line	Score	ATS/O/U
11/7	at Oregon	+11	14-35 L	p49
11/14	Colorado	-10	32-35 L	o55
11/21	Washington State	Cancelled		
11/27	at California			
12/5	at Washington			
12/12	Oregon State			
12/19				

Syracuse (SU: 1-8, ATS: 4-5, O/U: 4-5)

Date	Opponent	Line	Score	ATS/O/U
9/12	at North Carolina	+24	6-31 L	u67
9/19	at Pittsburgh	+21	10-21 W	u46
9/26	Georgia Tech	+7	37-20 W	o52
10/3				
10/10	Duke	+2	24-38 L	o52
10/17	Liberty	+3	21-38 L	o54
10/24	at Clemson	+47	21-47 W	o64
10/31	Wake Forest	+14	14-38 L	u54
11/7	Boston College	+14	13-16 W	u59
11/14				
11/20	at Louisville	+19	0-30 L	u55
11/28	NC State			
12/5	at Notre Dame			

TCU (SU: 3-4, ATS: 4-3, O/U: 3-4)

Date	Opponent	Line	Score	ATS/O/U
9/26	Iowa State	+4	34-37 W	o43
10/3	at Texas	+10	33-31 W	o61
10/10	Kansas State	-11	14-21 L	u49
10/17				
10/24	Oklahoma	+6	14-33 L	u58
10/31	at Baylor	-2	33-23 W	o47
11/7	Texas Tech	-9	34-18 W	o60
11/14	at West Virginia	+3	6-24 L	u44
11/21				
11/28	at Kansas			
12/5	Oklahoma State			

Temple (SU: 1-6, ATS: 2-5, O/U: 3-3-1)

Date	Opponent	Line	Score	ATS/O/U
10/10	at Navy	-4	29-31 L	o51
10/17	USF	-14	39-37 L	o53
10/24	at Memphis	+14	29-41 W	p70
10/31	at Tulane	+7	3-38 L	u56
11/5	SMU	+17	23-47 L	o63
11/14	at UCF	+28	13-38 W	u72
11/21	East Carolina	+7	3-28 L	u53
11/28	Cincinnati			

Tennessee (SU: 2-5, ATS: 1-5-1, O/U: 2-5)

Date	Opponent	Line	Score	ATS/O/U
9/26	at South Carolina	-4	31-27 P	o45
10/3	Missouri	-10	35-12 W	u49
10/10	at Georgia	+12	21-44 L	o43
10/17	Kentucky	-6	7-34 L	u45
10/24	Alabama	+22	17-48 L	u66
10/31				
11/7	at Arkansas	-2	13-24 L	u54
11/14				
11/21	at Auburn	+10	17-30 L	u51
11/28	at Vanderbilt			
12/5	Florida			
12/12	Texas A&M			

Texas (SU: 5-2, ATS: 2-4-1, O/U: 5-2)

Date	Opponent	Line	Score	ATS/O/U
9/12	UTEP	-44	59-3 W	o56
9/19				
9/26	at Texas Tech-ot	-17	63-56 L	o71
10/3	TCU	-10	31-33 L	o64
10/10	† Oklahoma-4ot	+3	45-53 L	o71
10/17				
10/24	Baylor	-11	27-16 P	u61
10/31	at Oklahoma St-ot	+3	41-34 W	o58
11/7	West Virginia	+6	17-13 L	u55
11/14				
11/21	at Kansas	Cancelled		
11/27	Iowa State			
12/5	at Kansas State			

Texas A&M (SU: 5-1, ATS: 3-3, O/U: 4-2)

Date	Opponent	Line	Score	ATS/O/U
9/26	Vanderbilt	-31	17-12 L	u46
10/3	at Alabama	+18	24-52 L	o54
10/10	Florida	+5	41-38 W	o59
10/17	at Mississippi St	-4	28-14 W	u56
10/24				
10/31	Arkansas	-14	42-31 L	o54
11/7	at South Carolina	-9	48-3 W	u58
11/14				
11/21	Ole Miss	Cancelled		
11/28	LSU			
12/5	at Auburn			
12/12	at Tennessee			

Texas St (SU: 2-9, ATS: 7-4, O/U: 5-6)

Date	Opponent	Line	Score	ATS/O/U
9/5	SMU	+24	24-31 W	u71
9/12	UTSA-2ot	-6	48-51 L	o57
9/19	at UL-Monroe	-3	38-17 W	u58
9/26	at Boston College	+21	21-24 W	u57
10/3				
10/10	at Troy	+7	17-37 L	u59
10/17	at South Alabama	+5	20-30 L	o57
10/24	at BYU	+30	14-52 L	u61
10/31	UL-Lafayette	+16	34-44 W	u57
11/7	Appalachian St	+21	17-38 W	o58
11/14	at Ga Southern	+12	38-40 W	o49
11/21	Arkansas State	+4	47-45 W	o69
11/28	Coastal Carolina			

Texas Tech (SU: 3-5, ATS: 3-5, O/U: 3-5)

Date	Opponent	Line	Score	ATS/O/U
9/12	Houston Baptist	-40	35-33 L	u80
9/19				
9/26	Texas	+17	56-63 W	o71
10/3	at Kansas State	PK	21-31 L	o62
10/10	at Iowa State	+10	15-31 L	u63
10/15				
10/24	West Virginia	+2	34-27 W	o54
10/31	Oklahoma	+16	28-62 L	o65
11/7	at TCU	+9	18-34 L	u60
11/14	Baylor	PK	24-23 W	u54
11/21				
11/28	at Oklahoma State			
12/5	Kansas			

Toledo (SU: 2-1, ATS: 2-1, O/U: 2-1)

Date	Opponent	Line	Score	ATS/O/U
11/4	Western Green	-24	38-3 W	o59
11/11	at Bowling Mich	+1	38-41 L	u63
11/18	at Eastern Mich	-6	45-28 W	o62
11/28	Ball State			
12/5	at Northern Illinois			
12/12	Central Michigan			

Troy (SU: 4-4, ATS: 3-5, O/U: 1-6-1)

Date	Opponent	Line	Score	ATS/O/U
9/19	at Middle Tenn	-2	47-14 W	u66
9/26	at BYU	+14	7-48 L	u59
10/3				
10/10	Texas State	-7	37-17 W	u59
10/17	Eastern Kentucky	-30	31-29 L	p60
10/24	Georgia State	-2	34-36 L	o68
10/31	at Arkansas State	+3	38-10 W	u69
11/7	at Ga Southern	-3	13-20 L	u52
11/14				
11/21	Middle Tennessee	-11	17-20 L	u60
11/28	at Appalachian State			
12/5	at South Alabama			
12/12	Coastal Carolina			
12/17	UL-Monroe			

Tulane (SU: 5-5, ATS: 6-4, O/U: 6-4)

Date	Opponent	Line	Score	ATS/O/U
9/12	at South Alabama	-11	27-24 L	u51
9/19	Navy	-5	24-27 L	o45
9/26	at Southern Miss	-3	66-24 W	o54
10/3				
10/8	at Houston	+6	31-49 L	o58
10/16	SMU-ot	+6	34-37 W	o65
10/24	at UCF	+21	34-51 W	o71
10/31	Temple	-7	38-3 W	u56
11/7	at East Carolina	-3	38-21 W	o63
11/14	Army	-3	38-12 L	u46
11/19	at Tulsa-2ot	+5	24-30 L	o56
11/28				

Tulsa (SU: 5-1, ATS: 5-1, O/U: 2-4)

Date	Opponent	Line	Score	ATS/O/U
9/19	at Oklahoma St	+24	7-16 W	u67
9/26	at Arkansas State	Cancelled		
10/3	at UCF	+20	34-26 W	u69
10/10				
10/17				
10/23	at USF	-13	42-13 W	o51
10/30	East Carolina	-17	34-30 L	o59
11/7	at Navy	Cancelled		
11/14	SMU	+2	28-24 W	u64
11/21	Tulane-2ot	-5	30-24 W	u56
11/28	at Houston			
12/4	Cincinnati			

UAB (SU: 4-3, ATS: 2-5, O/U: 4-3)

Date	Opponent	Line	Score	ATS/O/U
9/3	Central Arkansas	-20	45-35 L	o50
9/10	at Miami (FL)	+15	14-31 L	u55
9/19				
9/24	at South Alabama	-7	42-10 W	o47
10/3	UTSA	-21	21-13 L	u55
10/10				
10/17	Western Kentucky	-11	37-14 W	o44
10/23	UL-Lafayette	+2	20-24 L	u50
10/31	at La Tech-2ot	-13	34-37 L	o48
11/7				
11/14	North Texas	Cancelled		
11/20	at UTEP	Cancelled		
11/27	Southern Miss			
12/5				
12/12	at Rice			

UCF (SU: 5-3, ATS: 3-5, O/U: 5-3)

Date	Opponent	Line	Score	ATS/O/U
9/19	at Georgia Tech	-9	49-21 W	o63
9/24	at East Carolina	-28	51-28 L	o77
10/3	Tulsa	-20	26-34 L	o69
10/10				
10/16	at Memphis	-3	49-50 L	o77
10/24	Tulane	-21	51-34 W	o71
10/31	at Houston	-3	44-21 W	u81
11/7				
11/14	Temple	-28	38-13 L	u72
11/21	Cincinnati	+4	33-36 W	o65
11/27	at USF			

UCLA (SU: 1-2, ATS: 2-1, O/U: 2-1)

Date	Opponent	Line	Score	ATS/O/U
11/7	at Colorado	-6	42-48 L	o56
11/15	California	+3	34-10 W	u67
11/20	at Oregon	+18	35-38 W	o51
11/28	Arizona			
12/5	at Arizona State			
12/12	USC			
12/19				

UL-Lafayette (SU: 7-1, ATS: 3-5, O/U: 2-6)

Date	Opponent	Line	Score	ATS/O/U
9/12	at Iowa State	+13	31-14 W	u56
9/19	at Georgia St-ot	-17		