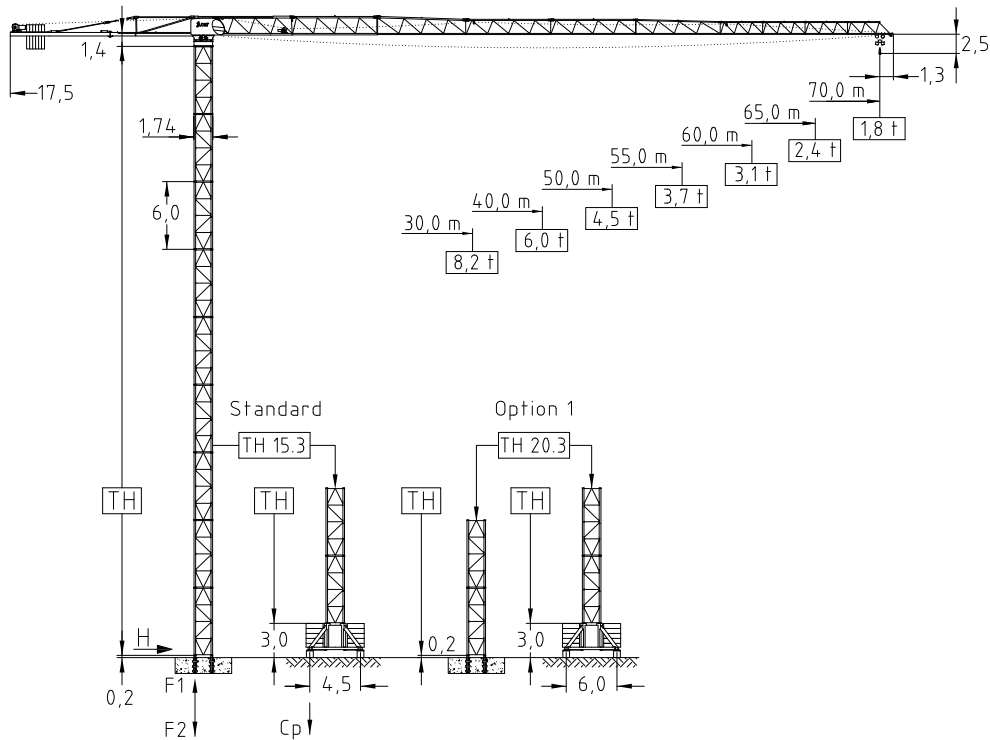


JT 212.12- 12,0 ton

Tower TH 15.3 4-fall rope

Topless Crane



Jib (m)	Tower heights all data in (m)			
	Standard Tower		Option 1	
	Foundat.	Chassis	Foundat.	Chassis
	TH 15.3	UC 4,5-15.3	TH 20.3	UC 6,0-20.3
30,0-40,0	60,0	48,0	69,0	57,0
50,0-55,0	57,0	45,0	66,0	54,0
60,0-65,0-70	54,0	42,0	63,0	51,0

EN 14439 : 2008
WIND C 25
ISO 9001 : 2008



Jib		max. Load	Jib reach									
m	rope	t	25	30	35	40	45	50	55	60	65	70
70,0	6,0	26,5	6,00	5,19	4,33	3,69	3,20	2,80	2,48	2,22	1,99	1,80
	12,0	14,5	6,33	5,08	4,19	3,54	3,03	2,63	2,30	2,03	1,80	1,60
65,0	6,0	30,1	6,00	6,00	5,06	4,33	3,77	3,32	2,96	2,66	2,40	
	12,0	16,1	7,23	5,84	4,86	4,14	3,57	3,12	2,76	2,46	2,20	
60,0	6,0	33,9	6,00	6,00	5,79	4,98	4,35	3,85	3,44	3,10		
	12,0	17,8	8,18	6,64	5,56	4,76	4,13	3,64	3,24	2,90		
55,0	6,0	36,1	6,00	6,00	6,00	5,34	4,67	4,13	3,70			
	12,0	18,9	8,78	7,14	5,98	5,12	4,46	3,93	3,50			
50,0	6,0	38,8	6,00	6,00	6,00	5,80	5,08	4,50				
	12,0	20,3	9,53	7,76	6,51	5,59	4,87	4,30				
40,0	6,0	40,0	6,00	6,00	6,00	6,00						
	12,0	21,3	10,04	8,18	6,87	5,90						
30,0	6,0	30,0	6,00	6,00								
	12,0	21,3	10,06	8,20								

Hoist 37,0 kW FI		t	1,4	1,8	2,8	4,6	5,8	6,0
l	m/min	92	84	68	50	42	24	
l	t	2,8	3,6	5,6	9,2	11,6	12,0	
l	m/min	46	42	34	25	21	12	
Drum capacity		820,0 m						

Hoist 55,0 kW FI		t	1,0	2,0	3,6	4,8	5,6	6,0
l	m/min	138	110	84	70	56	40	
l	t	2,0	4,0	7,2	9,6	11,2	12,0	
l	m/min	69	55	42	35	28	20	
Drum capacity		860,0 m						

Power requirement
400V (±10%) - 50Hz

Motor	5,0 kW FI	2 x 4,4 kW	4 x 5,0 kW
t/v	0,0-80,0 m/min	0,67 rpm	25,0 m/min
Power requirement		Hoist 37,0 kW	75,0 kVA
Upper part		Hoist 55,0 kW	100,0 kVA

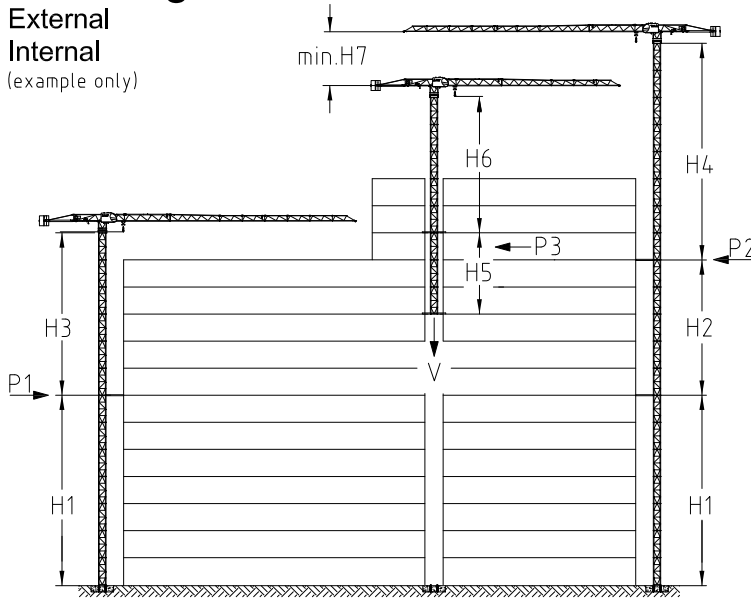
Shipping		
	Truck	Cont.
Top crane	5	6
Tower 2 unit	1	1
Climbing	1	1
Chasis	1	1

Counter weight	
Block 1	4 x 3,9 t
Block 2	2 x 2,5 t
Total	20,6 t

Ropes		
	D (mm)	N/mm ²
Hoist	14,0	1960
Trolley	10,0	1770

Climbing

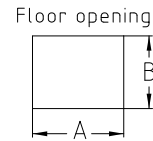
External
Internal
(example only)



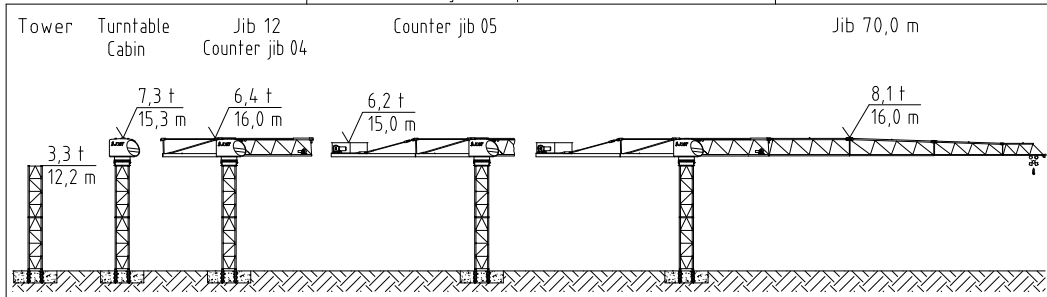
	m	in service	out of service
		t	t
H1	54,0		
H2	36,0		
H3	42,0		
H4	42,0		
H5	14,0		
H6	27,0		
H7	6,0		
A	2,40		
B	1,90		
P1		113,2	278,1
P2		127,0	259,3
P3		208,4	174,4
V		746,8	597,0

All data with TH 15.3

Jib length 30,0 m



Assembly sequence TH 15.3



Crane on foundation plate

Jib length (m)	Tower height (m)	No. of Towers	Foundation loadings			Corner forces	
			M (kNm)	V (kN)	H (kN)	F1 (kN)	F2 (kN)
70-65-60	54,0	9,0	6121,0	814,3	148,6	2252,0	- 2659,0
55-50	57,0	9,5	6639,0	795,4	149,1	2189,0	- 2587,0
40-30	60,0	10,0	7175,0	759,7	155,2	2306,0	- 2686,0

Crane on chassis

Jib length (m)	Tower height incl. chassis (m)	No. of Towers	in service		out of service		Ballast (t)
			Cp (kN)	H (kN)	Cp (kN)	H (kN)	
70-65	42,0	7,0	989,0	41,2	1002,0	150,4	110,0
60-55-50	45,0	7,5	1107,0	40,8	1018,0	150,7	130,0
40-30	48,0	8,0	1173,0	41,3	1118,0	160,7	145,0

Part list

Part	L (m)	W (m)	H (m)	kg	Part	L (m)	W (m)	H (m)	kg
Jib 12	12,01	1,60	2,35	4050	Counter jib 04+Electr	5,02	2,30	2,03	1705
Jib 03	10,84	1,45	2,27	2435	Counter jib 05+Suspen	11,97	2,08	0,77	3260
Jib 04	10,29	1,45	1,92	1560	Hook block	1,01	0,50	1,87	800
Jib 05	10,23	1,45	1,84	1345	Hoist unit & rope	2,37	1,84	1,32	2950
Jib 06	10,18	1,45	1,82	970	Trolley unit & rope	1,32	1,10	0,62	500
Jib 07	5,16	1,45	1,52	400	Trolley	1,82	1,73	1,03	360
Jib 08	5,15	1,45	1,52	340	Turn table+slew.unit	2,48	2,18	2,25	5750
Jib 09	5,13	1,45	1,51	320	Cabin & controlhous.	5,00	2,10	2,10	1500
Jib 10	5,10	1,45	1,50	295	Jib end	0,60	1,57	1,24	113