

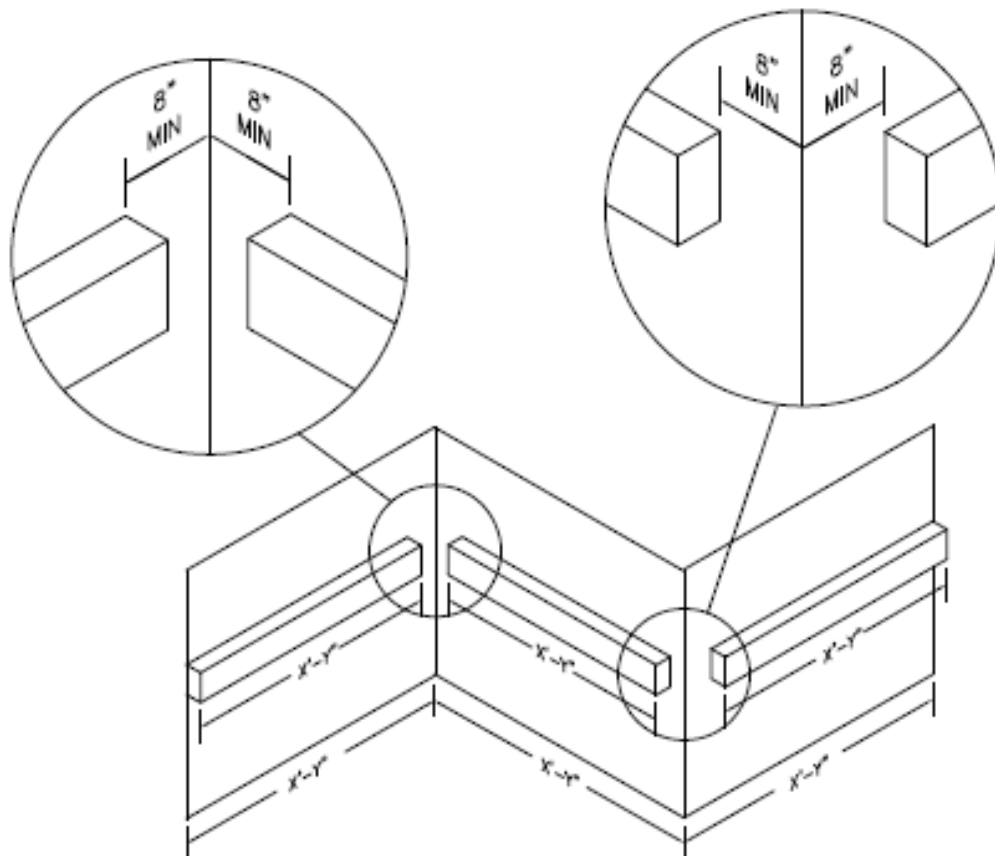
Application Briefs – Plug-In Raceway



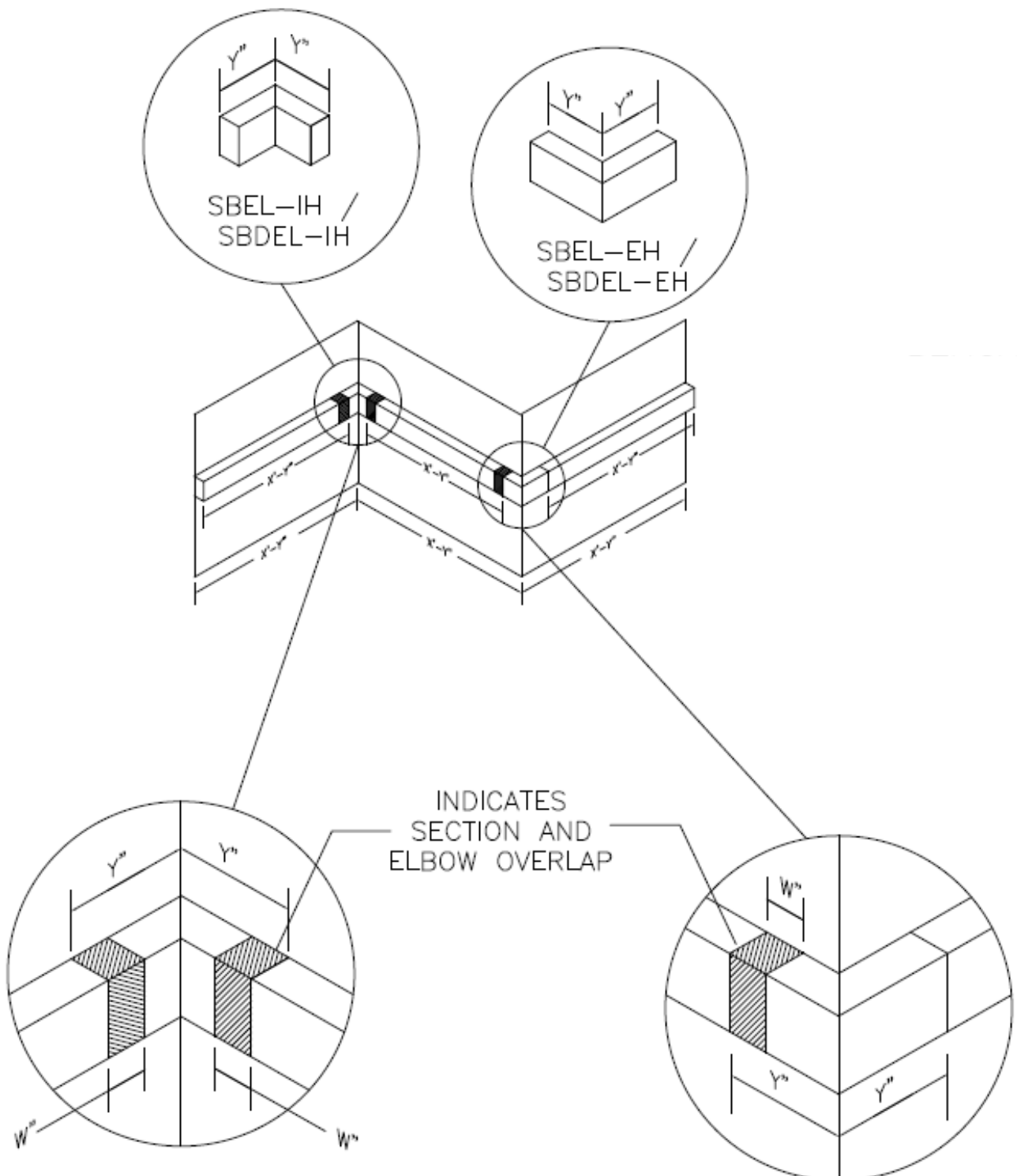
Field Cutting

Starline Plug-In Raceway was designed to allow for in field customization to fit the as-built dimensions of the area in which the raceway is to be installed. The field customization is accomplished by cutting/trimming the end feeds, center feeds, straight joiner sections or the elbows of the installed system in both power and power & data systems. ***It should be noted that a maximum of 4" can be removed from the end feeds and center feeds, and a maximum of 4" can be removed from each of the legs that create an elbow.*** The cutting/trimming is easily accomplished with the use of a cutoff saw. The backplanes contain the copper busbars that supply the power to the plug-in modules. ***These backplane sections are not allowed to be field cut.***

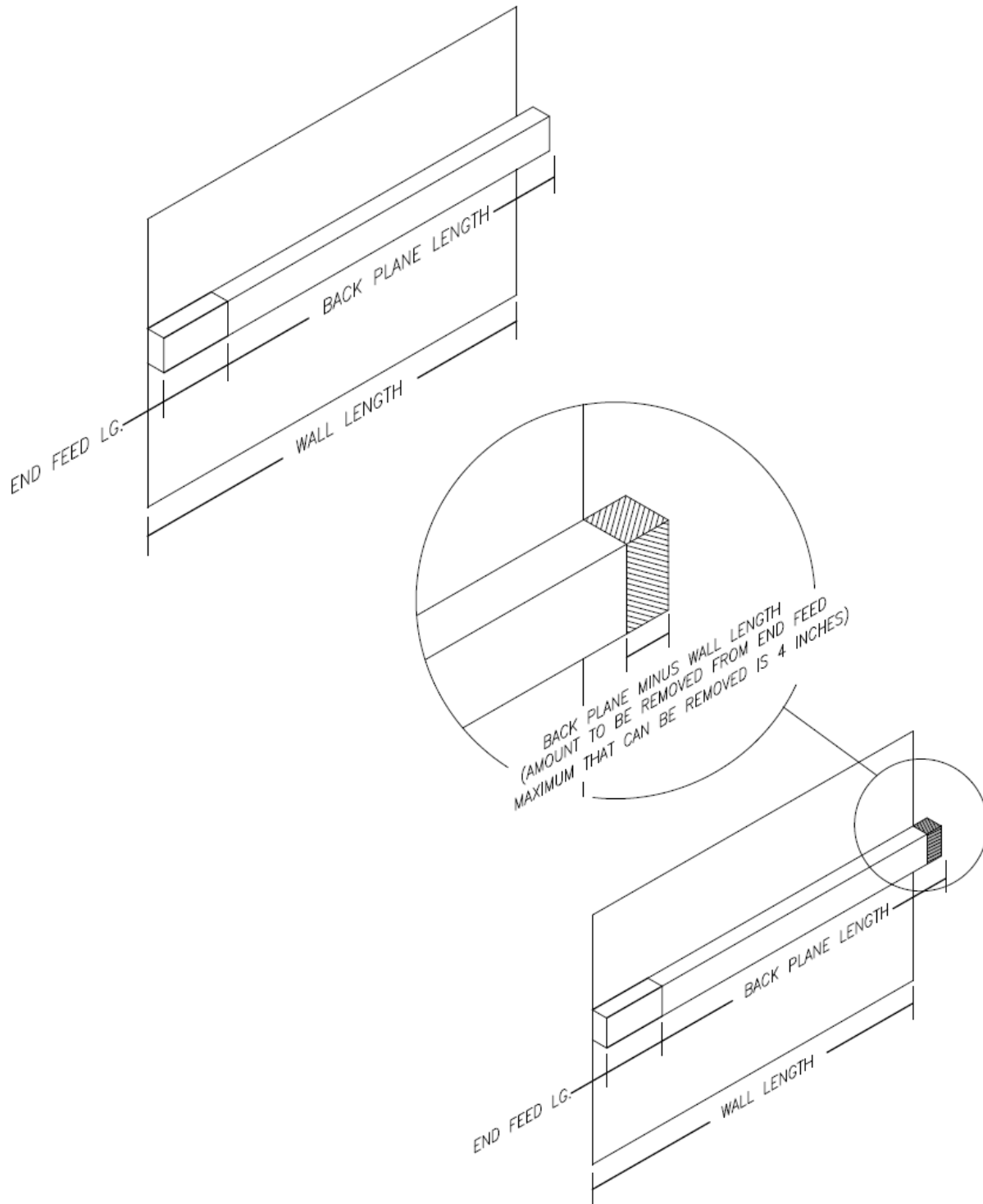
Situations will arise in the field where the lengths of the backplane do not meet the dimensions on a layout drawing. As an example a backplane section may end up too close to an interior or exterior corner of a room.



In order for the sections to fit, it will be necessary to adjust the length(s) of the interior or exterior elbow piece. The elbow pieces were designed with this situation in mind and thus can be field modified (cut) to connect the backplane sections together seamlessly.

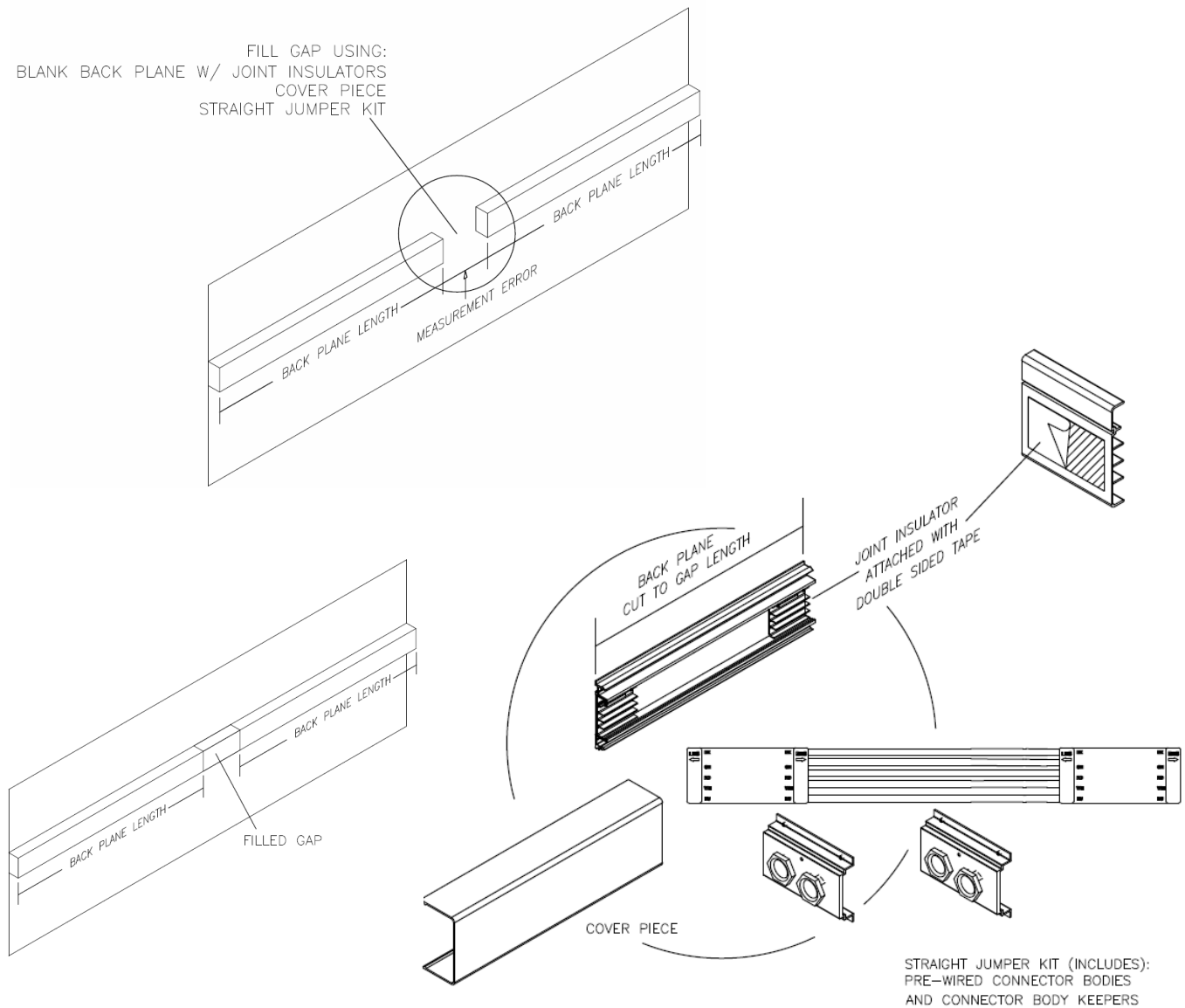


In another situation, a simple straight run of Starline Plug-In Raceway powered by an end feed may need to be adjusted to fit onto a wall. Again, since the backplane sections cannot be field cut, the end feed must be modified so the run will fit onto the wall and maximize the plug-in space.



As a final example of the field cutting flexibility of Starline Plug-In Raceway, a situation may arise where two runs of backplanes do not meet as intended in the middle of a wall. In this case a straight jumper section (SB20JS-UNIV-Y for example) can be used to tie the two runs together.

NOTE: Plug in space will be lost in the section of the straight jumper and the gap distance must be 6" or larger.



The straight jumper kits (and the elbow sections) include all the necessary parts to jump between the two backplanes. Installation of the straight jumper is similar to how the field modified elbows are installed.