

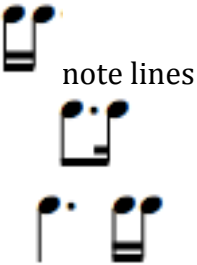


BRIGHTON BEACH

William P. Latham

<p><u>KEYS</u></p> 	<p><u>GRADE</u></p> <p>3</p>	<p><u>PERCUSSION REQUIREMENTS</u></p> <p>Snare Drum Bass Drum Crash Cymbals</p>	
<p><u>METER</u></p> 	<p><u>NUMBER OF MEASURES</u></p> <p>133</p>	<p><u>PERFORMANCE TIME</u></p> <p>3:45</p>	<p><u>PUBLISHER</u></p> <p>Belwin-Mills Publishing Corp. (2001)</p>

<p style="text-align: center;"><u>TECHNICAL CONSIDERATIONS</u></p> <p style="text-align: center;">Percussion rolls Dynamic contrast Layering parts Ruffs Trumpet fanfares Repeats – 1st and 2nd endings Flams Articulation variety Slurs Accidentals Timpani pitch changes <i>D.S. al Coda</i></p>  <p style="text-align: center;">note lines</p>		<p style="text-align: center;"><u>TEMPO(S)/STYLE(S)</u></p> <p style="text-align: center;">Brisk march tempo (♩ = 126-132)</p> <p style="text-align: center;"><i>rit.</i> <i>molto rit.</i></p>
<p style="text-align: center;"><u>SOLOS</u></p> <p style="text-align: center;">None</p>	<p style="text-align: center;"><u>CUES</u></p> <p style="text-align: center;">Horn 1 in Trombone 1 Horn 2 in Trombone 2 Horn 3 in Trombone 3 Clarinet in Trumpet 1 Oboe in Clarinet 1</p>	<p style="text-align: center;"><u>VOCABULARY</u></p> <p style="text-align: center;"><i>div.</i> <i>a2</i> <i>pizz.</i> <i>2nd time only</i> both times <i>D.S. al Coda</i> <i>rit.</i> <i>simile</i> <i>arco</i> <i>Trio</i> <i>1st time only</i> <i>To Coda</i> <i>molto rit.</i></p>

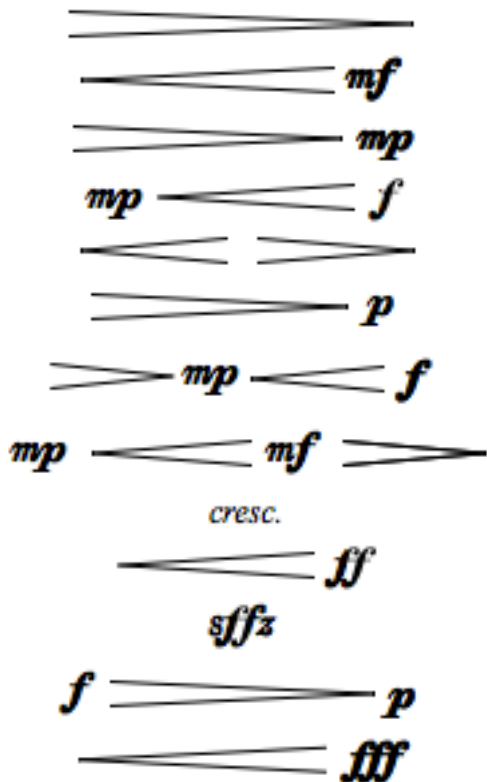
DYNAMICS

p

mp

mf

f



ARTICULATIONS

Accent

Slurs

Phrase markings

Staccato

Tenuto

Ties

CONDUCTOR CONSIDERATIONS

March style
Articulation contrast
Dynamic contrast
1st and 2nd endings
Off beat entrances
Layering of parts
D.S. al Coda
Tempo changes