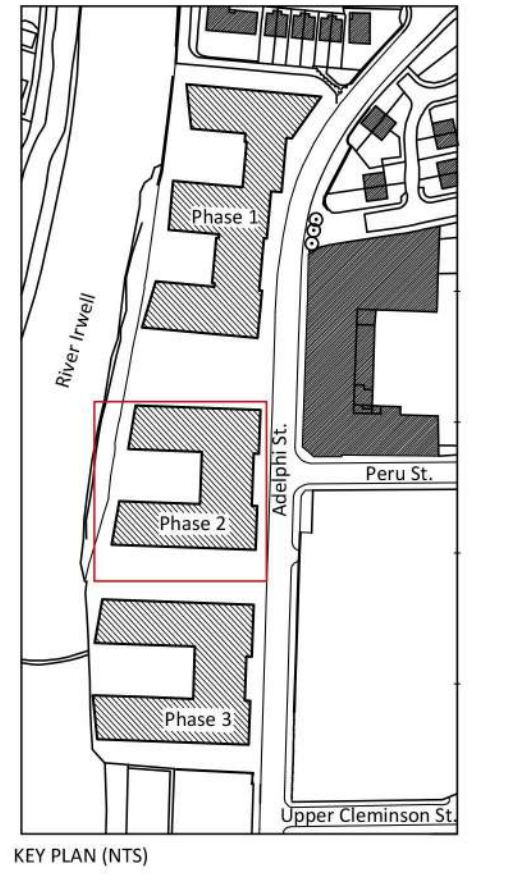


| Unit | Sqm Size |
|-----------|--------------------|
| UNIT G-01 | 61.1m ² |
| UNIT G-02 | 62.5m ² |
| UNIT G-03 | 35.6m ² |
| UNIT G-04 | 43.0m ² |
| UNIT G-05 | 42.4m ² |
| UNIT G-06 | 63.0m ² |
| UNIT G-07 | 63.1m ² |
| UNIT G-08 | 62.8m ² |
| UNIT G-09 | 62.5m ² |
| UNIT G-10 | 47.4m ² |

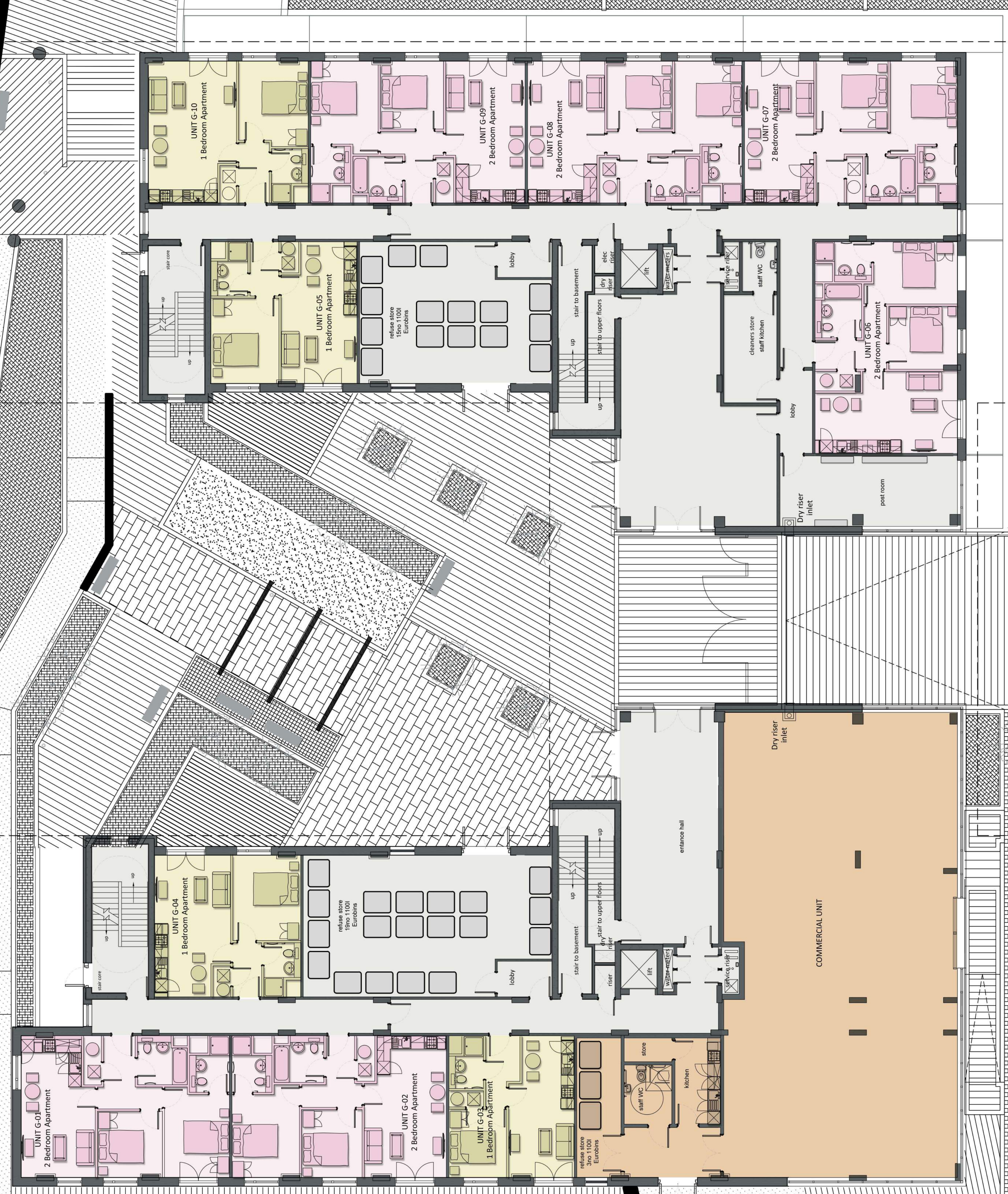
- Notes**
1. Do not scale drawing. If in doubt contact DMS Architecture Ltd.
 2. All dimensions are in millimetres unless noted otherwise.
 3. Not for construction unless otherwise shown.
 4. When appropriate, this drawing to be read in conjunction with project specific Designers Risk Assessments, produced in accordance with requirements of Regulation 13 of the Construction (Design and Management) Regulations 2007.
 5. The design shown on this drawing is the property of DMS Architecture Ltd and is not to be used or the drawing copied, communicated or disclosed, in whole or in part, except in accordance with a contract, license or agreement in writing with DMS Architecture Ltd.



Adelphi Wharf

- Studio Unit
- One Bed Unit
- Two Bed Unit
- Three Bed Unit
- Three Bed Duplex
- Accessible Unit
- Communal Areas
- Commercial Areas

ADELPHI STREET



PHASE 2
LEVEL 0 PLAN 1:100

| REV. | DATE | DESCRIPTION | DRN. | CHKD. |
|------|------|-------------|------|-------|
| | | | | |

fortis
developments

BEAUMONT MORGAN
Developments Ltd

Marfleet Environmental Industrial Park
Hedon Road, Hull, East Yorkshire, HU9 5NE

DMS
ARCHITECTURE

UNIT 5, COURTYARD 31, PONTEFRAC T ROAD
WAKEFIELD, WF6 1JU
Tel: 01924 899749
E-mail: mail@dmsarchitecture.co.uk www.dmsarchitecture.co.uk

PROJECT
**RESIDENTIAL DEVELOPMENT
PHASE 2/3
ADELPHI WHARF
SALFORD**

TITLE
**MARKETING PLANS PHASE 2
LEVEL 0**

STAGE
INFORMATION

| | | |
|---------------------|-------------------------|-----------|
| PROJECT No. 1142 | DRAWING No. A(21)203 | REV. - |
| SCALE 1:100 @ A1 | DATE NOV 2015 | |
| DRAWN MAB | CHECKED DR | |