

Left Hand Technique

Score

- Arranged By: Michael Sital -

G Major (Sol)

Musical score for G Major (Sol). The score is in 4/4 time and consists of four staves: Violin I, Trumpet in B♭ 1, Vihuela, and Guitar. The Violin I part features a melodic line with eighth-note patterns. The Trumpet in B♭ 1 part provides harmonic support with a similar eighth-note pattern. The Vihuela part has a rhythmic accompaniment of eighth notes, and the Guitar part has a bass line with eighth notes. Chord symbols G and D7 are indicated above the Vihuela staff.

D Major (Re)

Musical score for D Major (Re). The score is in 4/4 time and consists of four staves: Violin I, B♭ Trumpet 1, Vihuela, and Guitar. The Violin I part features a melodic line with eighth-note patterns. The B♭ Trumpet 1 part provides harmonic support with a similar eighth-note pattern. The Vihuela part has a rhythmic accompaniment of eighth notes, and the Guitar part has a bass line with eighth notes. Chord symbols D and A7 are indicated above the Vihuela staff.

A Major (La)

Musical score for A Major (La). The score is in 4/4 time and consists of four staves: Violin I, B♭ Trumpet 1, Vihuela, and Guitar. The Violin I part features a melodic line with eighth-note patterns. The B♭ Trumpet 1 part provides harmonic support with a similar eighth-note pattern. The Vihuela part has a rhythmic accompaniment of eighth notes, and the Guitar part has a bass line with eighth notes. Chord symbols A and E7 are indicated above the Vihuela staff.

E Major (Mi)

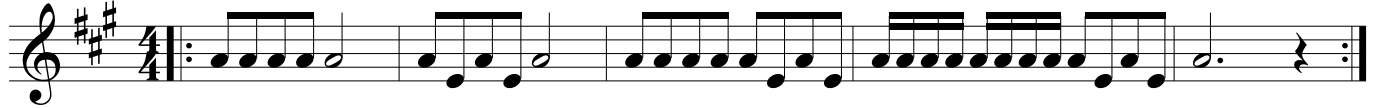
Musical score for E Major (Mi). The score is in 4/4 time and consists of four staves: Violin I, B♭ Trumpet 1, Vihuela, and Guitar. The Violin I part features a melodic line with eighth-note patterns. The B♭ Trumpet 1 part provides harmonic support with a similar eighth-note pattern. The Vihuela part has a rhythmic accompaniment of eighth notes, and the Guitar part has a bass line with eighth notes. Chord symbols E and B7 are indicated above the Vihuela staff.

Left Hand Technique

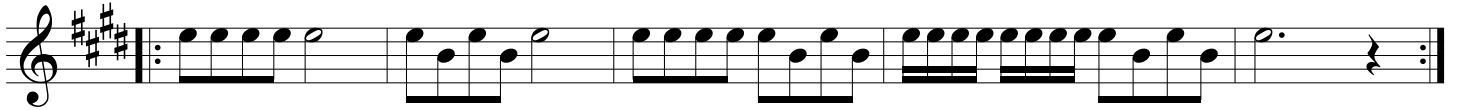
Trumpet

- Arranged By: Michael Sital -

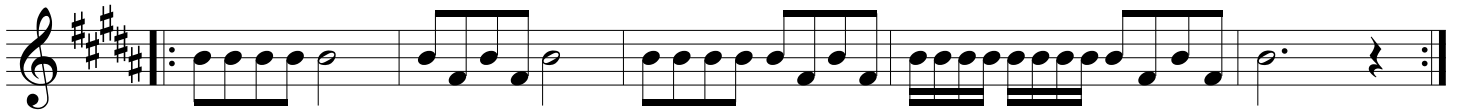
G Major (Sol)



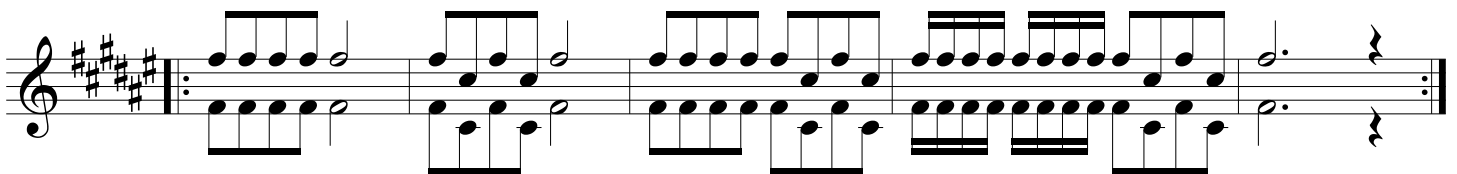
D Major (Re)



A Major (La)



E Major (Mi)



Left Hand Technique

Violin

- Arranged By: Michael Sital -

G Major (Sol)



D Major (Re)



A Major (La)



E Major (Mi)

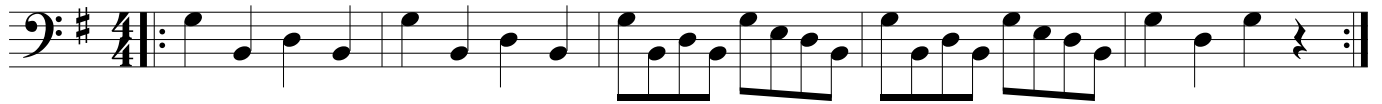


Left Hand Technique

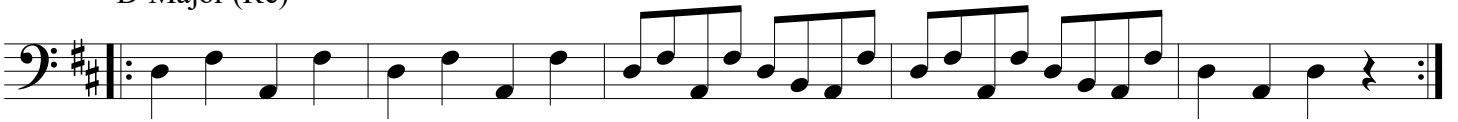
- Arranged By: Michael Sital -

Guitarron

G Major (Sol)



D Major (Re)



A Major (La)



E Major (Mi)



Left Hand Technique

- Arranged By: Michael Sital -

Armonia

G Major (Sol)

Musical notation for G Major (Sol) exercise. The key signature is one sharp (F#) and the time signature is 4/4. The exercise consists of five measures of eighth-note chords. The first four measures each contain two chords: G and D7. The fifth measure contains a single G chord. The notation uses a treble clef and a key signature of one sharp.

D Major (Re)

Musical notation for D Major (Re) exercise. The key signature is two sharps (F# and C#) and the time signature is 4/4. The exercise consists of five measures of eighth-note chords. The first four measures each contain two chords: D and A7. The fifth measure contains a single D chord. The notation uses a treble clef and a key signature of two sharps.

A Major (La)

Musical notation for A Major (La) exercise. The key signature is three sharps (F#, C#, and G#) and the time signature is 4/4. The exercise consists of five measures of eighth-note chords. The first four measures each contain two chords: A and E7. The fifth measure contains a single A chord. The notation uses a treble clef and a key signature of three sharps.

E Major (Mi)

Musical notation for E Major (Mi) exercise. The key signature is four sharps (F#, C#, G#, and D#) and the time signature is 4/4. The exercise consists of five measures of eighth-note chords. The first four measures each contain two chords: E and B7. The fifth measure contains a single E chord. The notation uses a treble clef and a key signature of four sharps.