

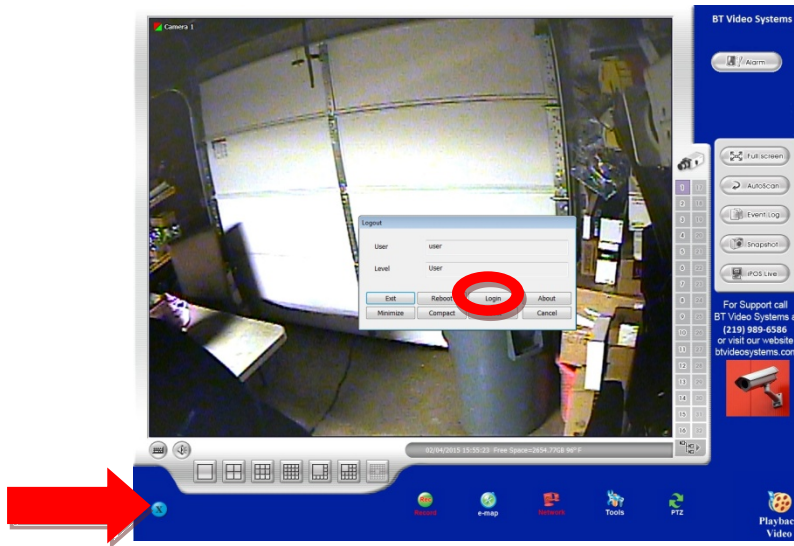


### DVSR Hybrid System Backup Procedure

**Step 1:** In playback mode, find the start time and end time of the incident  
Take note of the date, time and camera number(s). Then press **Return To Live View**

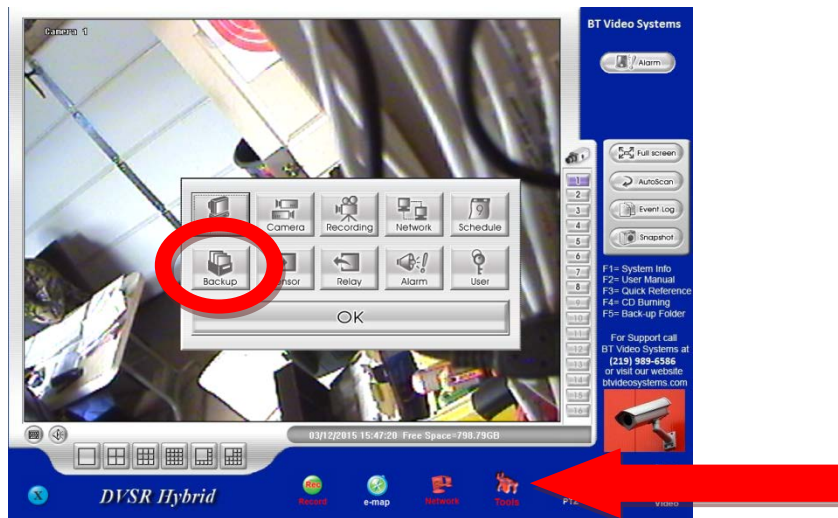


**Step 2:** Log into the system using the administrator user id and password by first clicking on the blue "X" in the bottom left hand corner of the screen. Next click the "log in" button and log into the DVR.



**Step 3:** Click on the "tools" or "setup" button in the bottom right hand corner of the screen

**Step 4:** Click on the back up button in the bottom left hand corner of the window that pops up





**Step 5:** Select the date on the calendar from step 1

**Step 6:** Check the box that says "auto partition" and select "CD-R" or "DVD-R" depending on what type of disc you are using

**Step 7:** The long grey rectangle to the left of the **Backup Now** button should read as follows:

C:\DOCUMENTS AND SETTINGS\IBT\MY DOCUMENTS\BACKUP

Otherwise press the  button to add the **Backup** folder in *My Documents*.

**Each box represents one hour of video**

**The blue squares represent available footage**

**The red squares represent selected footage**

**Step 8:** Select the blue box for the camera(s) and time needed. You want to line up the camera number along the left hand side and the time along the top side, click on the square and highlight it from blue to red. (Like playing the game battle ship)

**Step 5**

**Step 6**

**Step 7**

**Step 8**

The row of numbers on the top are hours in military time

The column of numbers to the left are the camera number



Step 10: Press the **Backup Now** button



Step 11: Once a message is displayed that backup is complete, Press the **ok** button (Fig 1), and then press the **Burn** button (Fig 2).

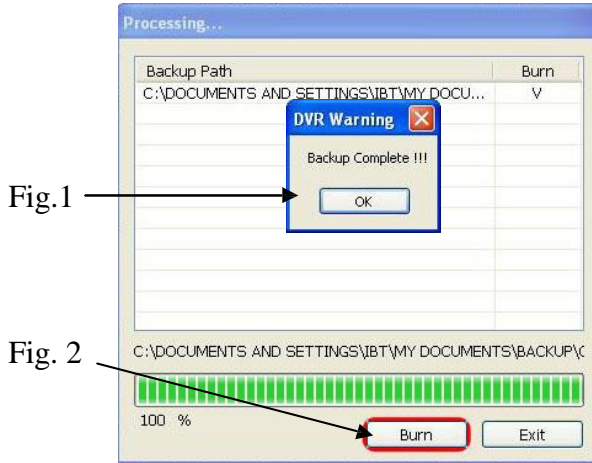


Fig 3

Step 12: Insert a blank CD-R or CD-R/W into the CD drive on the front of the DVR. If a message pops up asking what you would like to do with the disc, press **cancel** (Fig 3).

Step 14: Press **Burn** to start burning to the disc.

The CD will automatically eject when the burn process is complete  
After the CD is complete, exit the windows back to live mode

