

# Everyday Candleholders & Potpourri Burners

Item Number	Description	Size (Inches)	Bisque
JM-661	 <p>Plain Potpourri Burner</p>	5 Diameter	9.00
Cin-1028	 <p>"Bubba" Tiki Candleholder</p>	6.75 Tall	8.00
CH-12	Plain Oil/ Wax Tart Burner		8.00



LL-352



3.5 Tall

10.00

Daffodil Candleholder

A- 1813



5  
Diameter

9.00

Shell Bowl/ Candleholder

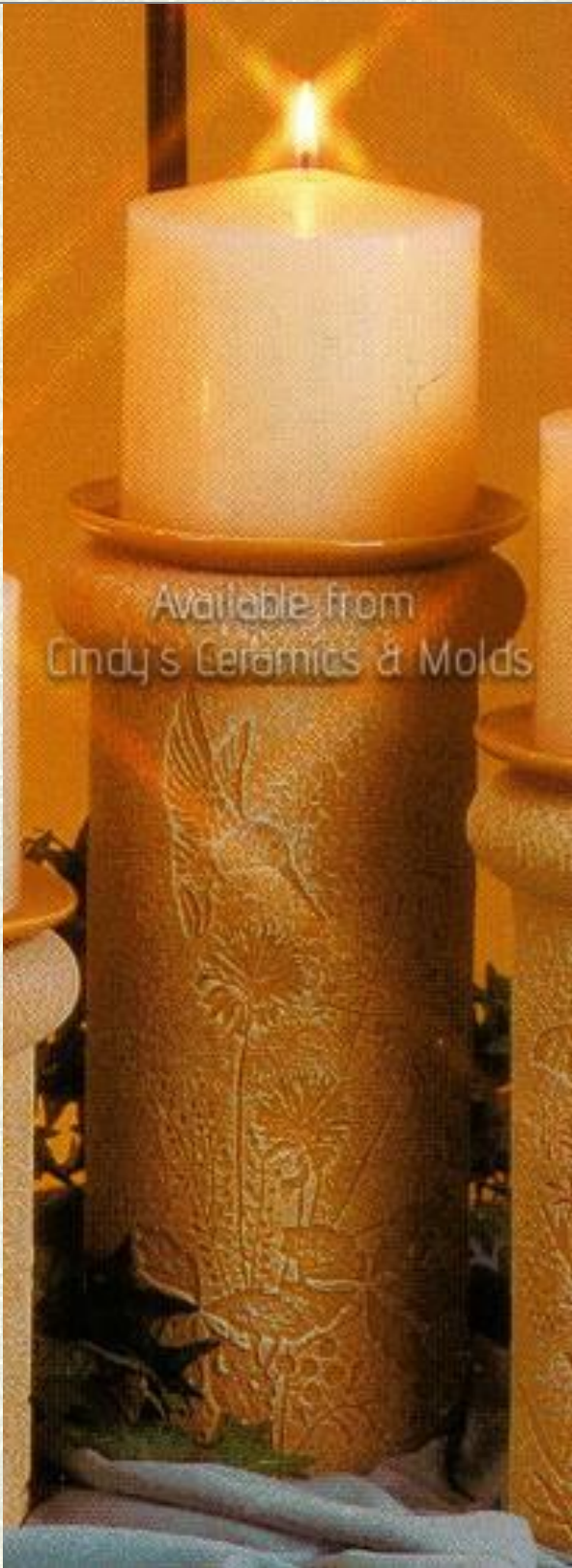


<p>H- 2853</p>	 <p>Small Koi Planter/ Candleholder</p>	<p>3.75 High by 10.5 Long</p>	<p>18.00</p>
<p>H- 2938/40</p>	 <p>Tulip Light</p>	<p>7.75 High</p>	<p>16.00</p>



D-1743	 <p>Votive Candle Cup for Impressions Series (shown on center left inside Woodland Impressions Candleholders)</p>	3 Diameter	4.70
D-1744	Oil Lamp Holder for Impressions Series (actual oil lamp insert sold separately; shown on center right inside Woodland Impressions Candleholders)	3 Diameter	4.70
D-1760	Woodland Impressions Small Candleholder/ Lamp (choose Votive Holder, Oil Lamp Holder, Candle Dish, or Tea Light Holder, sold separately)	5 High	13.00
D-1761	Woodland Impressions Medium Candleholder/ Lamp (choose Votive Holder, Oil Lamp Holder, Candle Dish, or Tea Light Holder, sold separately)	8 High	17.30
D-1762	Woodland Impressions Large Candleholder/ Lamp (choose Votive Holder, Oil Lamp Holder, Candle Dish, or Tea Light Holder, sold separately)	11 High	21.60



D-1834	 <p data-bbox="248 1740 1230 1858">Meadow Impressions Large Candleholder/ Lamp (choose Votive Holder, Oil Lamp Holder, Candle Dish, or Tea Light Holder, sold separately)</p>	11 High	21.60
D-1837	Candle Dish for Impressions Series (shown above on Meadow Impressions Candleholder)	5.5 Diameter	6.10
D-1841	Tea Light Holders for Impressions Series (shown below on Canoe Candleholder)	3 Wide	7.20



D-1861	 <p>Jar Candle Base</p>	6.25 Wide	7.20
D-1874	 <p>Large "Coastal Impressions" Candleholder (choose Lighthouse Candlecup, Votive Holder, Oil Lamp Holder, Candle Dish, or Tea Light Holder, sold separately)</p>	14 High	21.60
D-1876	<p>Small "Coastal Impressions" Candleholder (choose Votive Holder, Oil Lamp Holder, Candle Dish, or Tea Light Holder, sold separately)</p>	10 High	13.00
D-1877	<p>Lighthouse Candlecup for D-1874, 1876 (shown above top right)</p>	6.25 High	5.80



D-  
1881/2

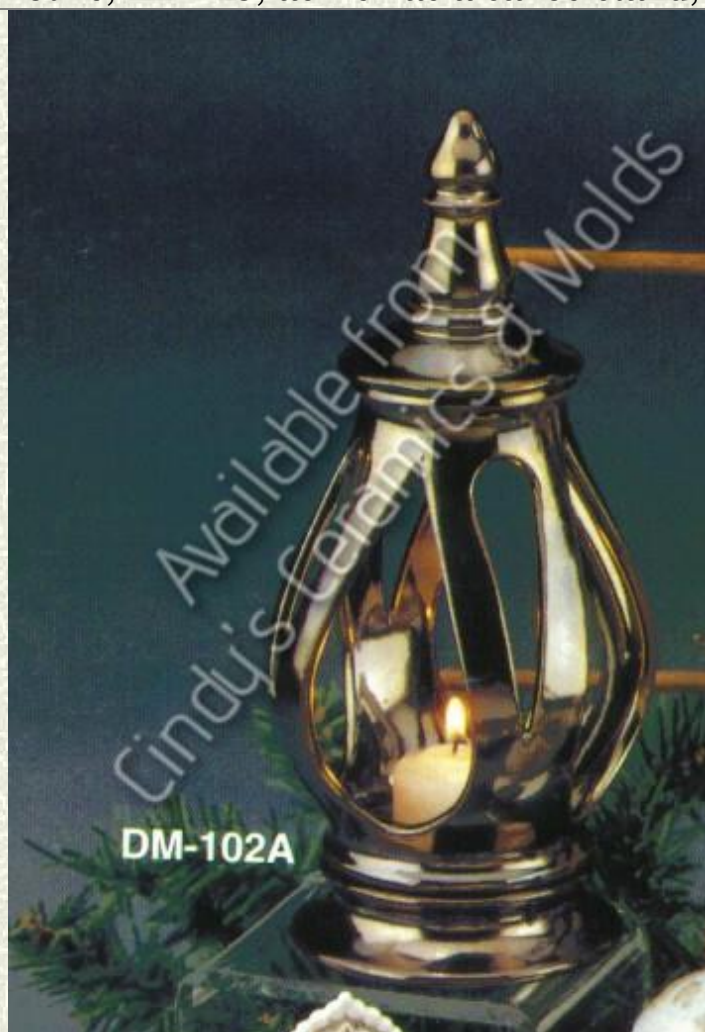


Canoe:  
18 Long;  
Stand 5.5  
Wide

21.70

Canoe Candleholder & Stand (shown bottom center; uses either three tea light holders, D-1841, or two tea light holders and one votive, D-1743, as well as a canoe stand, D- 1882)

DM-102A



9.75 High 14.00

Patio Lantern



DM-268	 <p>Owl Bank/ Lantern</p>	6 High	10.50
S-3138	 <p>Candle Cup Base (For Tapir Candles, Shown inside village hurricane lantern [not available]; Can be added to many pieces to convert them into candleholders)</p>		2.20



<p>S-3569</p>	<div data-bbox="251 88 1224 611" data-label="Image"> </div> <div data-bbox="485 653 989 688" data-label="Caption"> <p>Candle Base (for Jar Candles)</p> </div>	<p>7.5 Diameter</p>	<p>8.90</p>
<p>A-426</p>	<div data-bbox="251 695 1224 1856" data-label="Image"> </div> <div data-bbox="217 1900 1261 1980" data-label="Caption"> <p>Candleholder Tray (Can be used alone, or with many different small figurines)</p> </div>	<p>2.125 High by 6.625 Long</p>	<p>6.00</p>



TB-840



3.5  
Diameter

12.00

Seashell Candleholders

MOM-  
135



7 High

9.00

Plain Short Candleholder (Can be cutout with various designs for a slight upcharge; Shown with optional attachments)



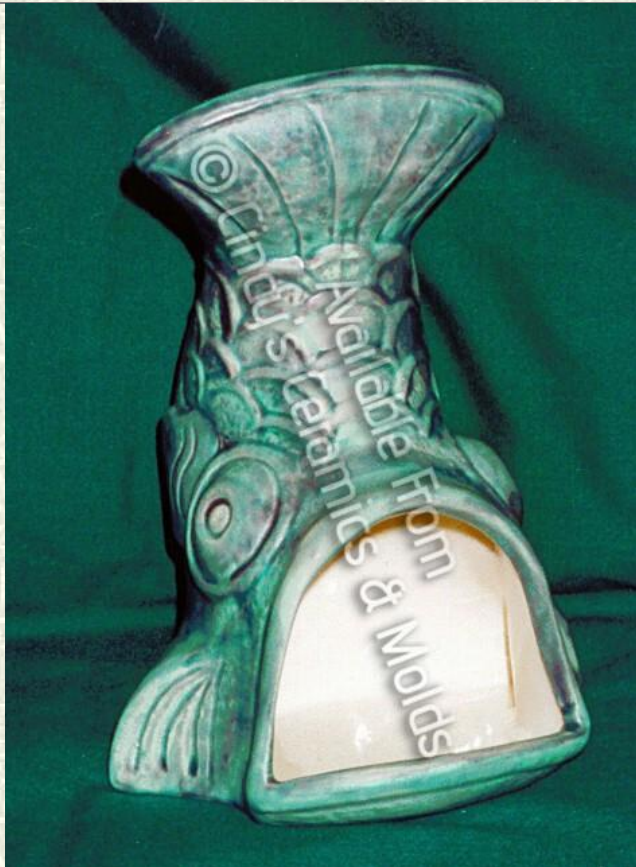
M-1415



12.50

Leaves & Acorns Candleholder

C-4044



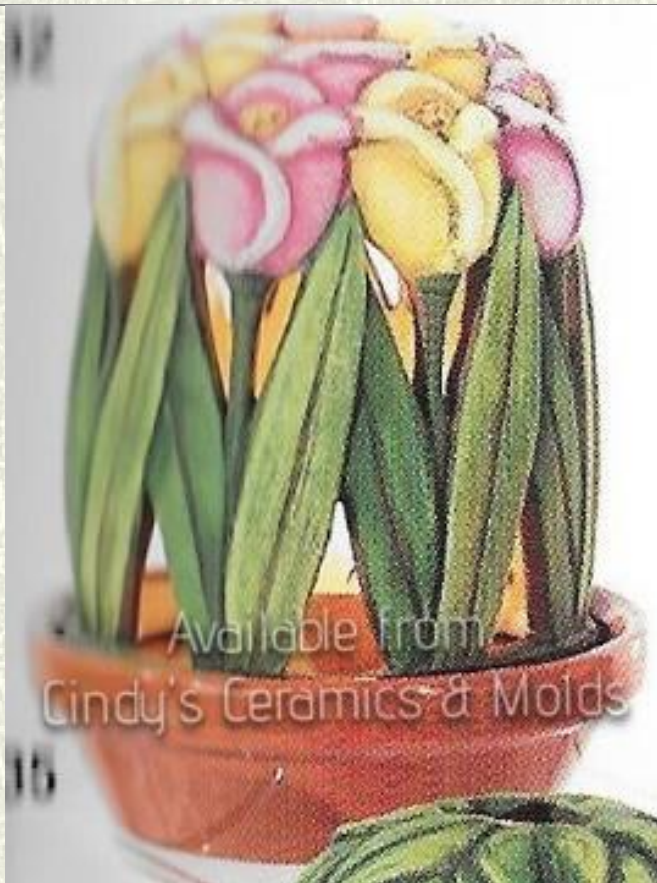
7 Tall by  
5.5 Wide  
by 5  
Long

13.80

Small Fish Chimminarie



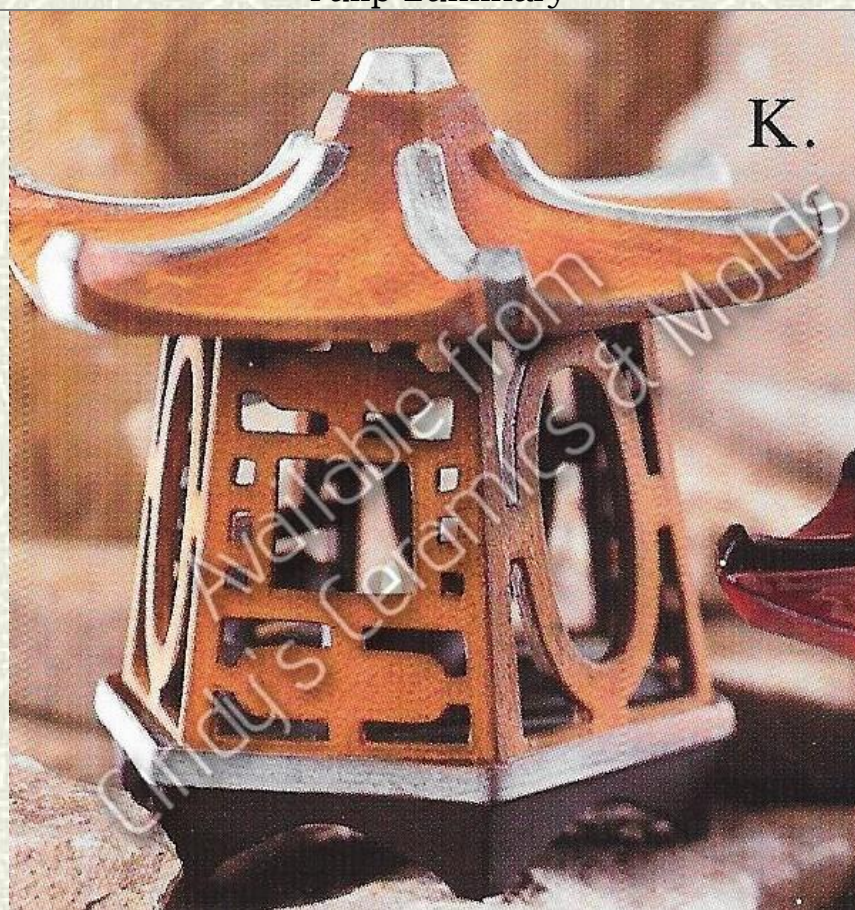
C-4032/5



16.00

Tulip Luminary

C-4046



8 Tall by  
8.5 Wide

50.00

Large Pagoda



J-2130/1



9.75 Tall 30.30

Cat Light



