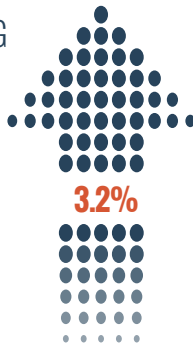


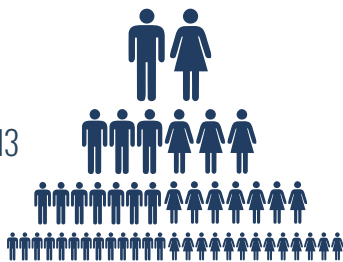
GARRETT COUNTY MARYLAND Behavioral Health SNAPSHOT



BINGE DRINKING IN GARRETT COUNTY INCREASED FROM 6.8% IN 2008 TO 10% IN 2012.

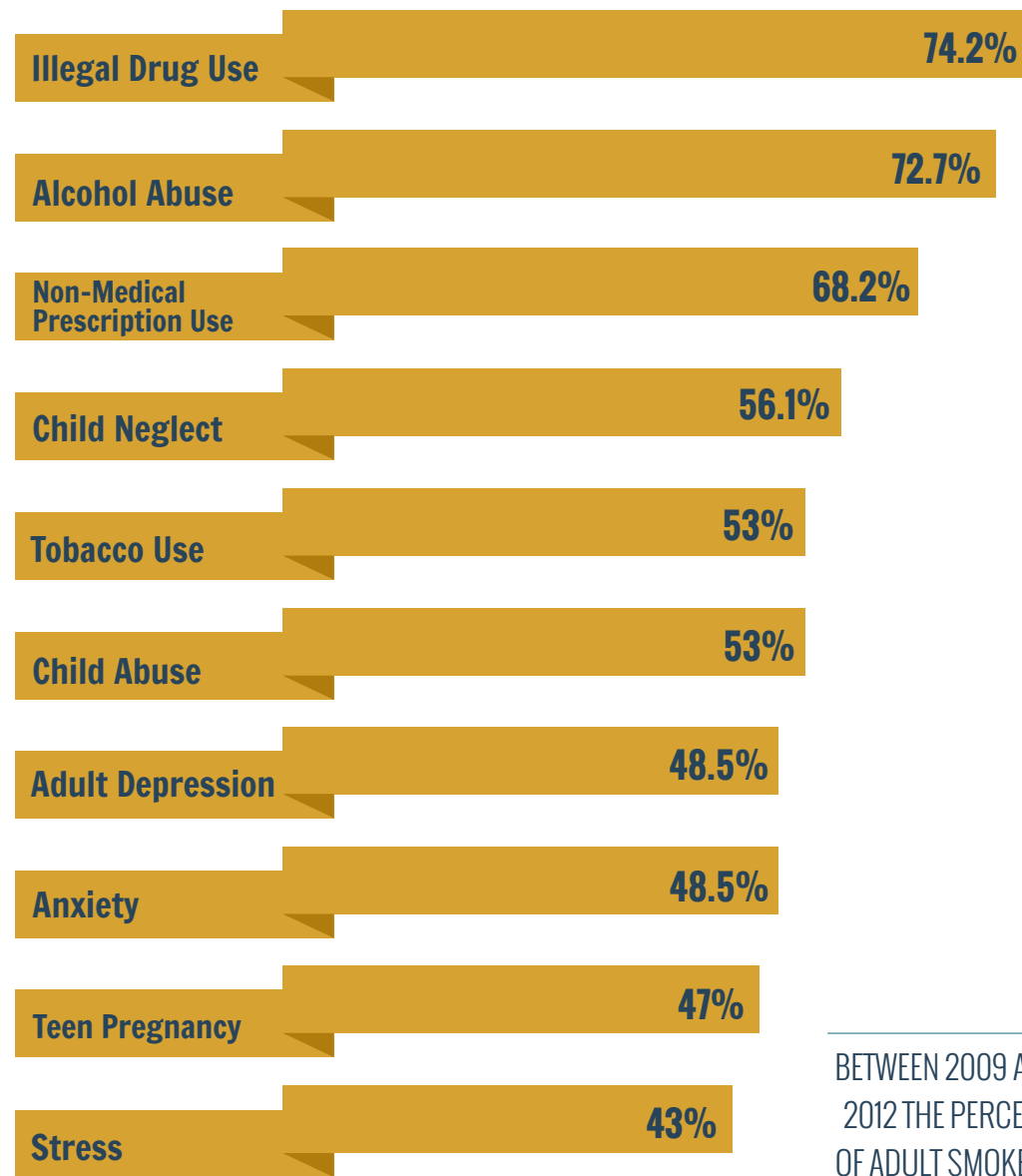


29,889
Garrett County
Population in 2013



TOP 10 GARRETT COUNTY BEHAVIORAL HEALTH PRIORITIES

As selected in a survey by local community leaders.



BETWEEN 2009 AND 2012 THE PERCENT OF ADULT SMOKERS IN GARRETT COUNTY INCREASED FROM 13.2% TO 15%.



34

Births out of every 1,000 in Garrett County were to mothers aged 15-19.



3.3

Incidents of domestic violence for every 1,000 people reported in Garrett County in 2012.



15.9%

of Garrett County adults were diagnosed with depression in 2012.

GARRETT COUNTY MARYLAND Behavioral Health SNAPSHOT

DOMESTIC VIOLENCE

GARRETT COUNTY

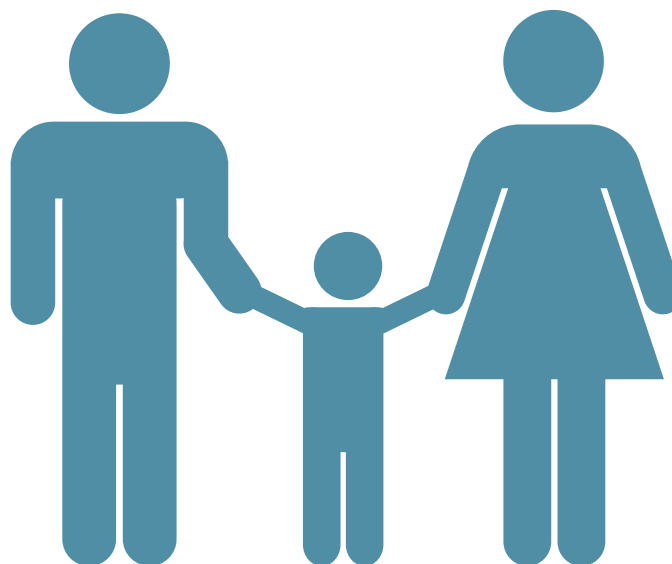
3.3

Incidents of domestic violence for every 1,000 people reported in 2012.

MARYLAND

2.9

Incidents of domestic violence for every 1,000 people reported in 2012.



ADULT DEPRESSION

GARRETT COUNTY

15.9%

of adults were diagnosed with depression in 2012.

MARYLAND

16.3%

of adults were diagnosed with depression in 2012.

BINGE DRINKERS

GARRETT COUNTY

6.8% - 10%

Binge drinkers increased from 6.8% in 2008 to 10% in 2012.

MARYLAND

10.9% - 11.5%

Binge drinkers increased from 10.9% in 2008 to 11.5% in 2012.



TEEN PREGNANCY

GARRETT COUNTY

34

births out of every 1,000 were to mothers aged 15-19.

MARYLAND

22

births out of every 1,000 were to mothers aged 15-19.

GARRETT COUNTY BEHAVIORAL HEALTH RELATIVE TO MARYLAND

BETTER THAN MARYLAND AND GETTING BETTER

Poor Mental Health Days

BETTER THAN MARYLAND AND GETTING WORSE

Adult Depression
Binge Drinking
Depression among Medicare Recipients
STDs

WORSE THAN MARYLAND AND GETTING BETTER

Drunk Driving Deaths
Suicide

WORSE THAN MARYLAND AND GETTING WORSE

Domestic Violence
Drunk Driving
Accidents
Heavy Drinking
Smoking
Teen Birth Rate

This snapshot infographic summarizes data on top community behavioral health priorities in Garrett County, Maryland as identified by its community leaders as of June 2014 and is a product of the CAPE Project (Community Assessment and Education to Promote Behavioral Health Planning and Evaluation). The information provided in this snapshot corresponds to an in depth community profile on Garrett County, based on the 2014 CAPE survey as well as secondary sources such as County Health Rankings, National Highway Traffic Safety Administration, Maryland Department of Transportation, Maryland Department of Health and Mental Hygiene, Maryland State Police Uniform Crime Report, Centers for Disease Control and Prevention, Centers for Medicare and Medicaid Services, and Behavioral Risk Factor Surveillance System. CAPE is dedicated to identifying and sharing best practices for benchmarking community behavioral health and is funded by the Department of Health and Human Services' Substance Abuse and Mental Health Services Administration (SAMHSA) and facilitated by the United States Department of Agriculture's National Institute of Food and Agriculture.

CAPE | Community Assessment and Education to Promote Behavioral Health Planning and Evaluation
VISIT US ON THE WEB healthbench.info