

THE PACIFIC BASIN MUSIC FESTIVAL



E x p l o r e T h e W o r l d W i t h M u s i c

JOHANSEN HIGH SCHOOL CONCERT BAND 2020 PACIFIC BASIN MUSIC FESTIVAL March 21 – 26, 2020

As of: August 13, 2019

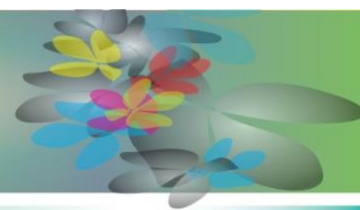
(itinerary details subject to change)

DAY ONE: Saturday, March 21, 2020 – OAKLAND → HONOLULU

- 6:00am Arrive at the Oakland International Airport (OAK) at least 2 hours prior to your flight's departure. Check-in to your flight and proceed through security and on to your departure gate.
- 8:00am Depart for Honolulu on Hawaiian Airlines HA47.
- 10:55am Arrive into Honolulu at Daniel K. Inouye International Airport (HNL)! Proceed to baggage claim, collect your luggage and enjoy a traditional Hawaiian Lei Greeting. Load the coach, and depart for the Waikiki Resort. Upon arrival at the hotel, you will be met by a World Projects representative who will assist you with check-in.
Please note while official check-in time is 3pm, all rooms might not be ready at this time. Thank you for your patience.
- Afternoon After checking in, enjoy lunch on own and time to explore Waikiki!
- Evening Enjoy dinner on own (*or it may be arranged through World Projects!*).
- 8:30pm Director or group representative will be required to attend a Directors' Orientation Meeting. This will give you a chance to meet the Festival Staff and go over the schedule and any last-minute questions you may have.
- 9:00pm Afterwards, we invite you to attend an informal Reception (*location TBC*). This will give you a chance to meet the other directors and faculty at the Festival in a more social atmosphere.
- 10:30pm Reception concludes.



THE PACIFIC BASIN MUSIC FESTIVAL



E x p l o r e T h e W o r l d W i t h M u s i c

DAY TWO: Sunday, March 22, 2020 – HONOLULU (D) – Rehearsal & Workshop

- Morning** Enjoy breakfast on own.
After breakfast, meet at the Festival Hotel with instruments and enjoy a 60-minute *rehearsal*.
After your rehearsal, pack up your instruments.
- Afternoon** Enjoy lunch on own in the area.
Later, return to the Festival Hotel and enjoy a *workshop* with a Festival Faculty Member!
After the workshop, pack up your instruments and return them to your rooms.
The rest of the afternoon is free for sightseeing on own.
Later, return to the hotel where you will have time to freshen up for this evening.
- 7:15pm** Meet as a group at the Festival Hotel Ballroom (TBC).
Seating allocations will be given to the group at the Director's Orientation.
- 7:30-10:30pm** Enjoy this evening's Pacific Basin Music Festival Welcome Dinner Dance!
Throughout the evening, enjoy a plated dinner, introductions from the Festival Staff, and a chance to socialize with like-minded peers from around the world.
- 10:00pm** Dinner Dance concludes.
Return to your hotel.



DAY THREE: Monday, March 23, 2020 – HONOLULU – Exchange Rehearsal & Outdoor Performance

- Morning** Enjoy breakfast on own.
Later, meet at the Festival Hotel with instruments and enjoy a 90-minute *exchange rehearsal* with another Festival ensemble!
Afterwards, pack up your instruments and load the coach.
Transfer to the Ala Moana Shopping Center.
- Afternoon** Upon arrival, enjoy lunch and time to shop on own.
Later, meet as a group at Centerstage (TBC).
- Time TBD** Enjoy your *outdoor performance!* (TBC)
Afterwards, pack up your instruments and load the coach.
- Evening** Return to the hotel and enjoy dinner on own.
The rest of the evening is free.



THE PACIFIC BASIN MUSIC FESTIVAL



E x p l o r e T h e W o r l d W i t h M u s i c

DAY FOUR: Tuesday, March 24, 2020 – HONOLULU – Adjudicated Performance

- Morning** Enjoy breakfast on own.
Depending on the number of participating ensembles, an afternoon instrumental concert might also be scheduled today. In the case that there is an afternoon concert, instrumental sound checks may also be scheduled for the morning.
- Afternoon** This morning is free for sightseeing on own.
Enjoy lunch on own.
Later, meet as a group at the festival hotel with instruments.
Enjoy a 20-minute sound check in the Festival Hotel Ballroom. A group photo will be taken at the sound check.
- Evening** After your sound check, enjoy dinner on own.
Return to the Festival Hotel Ballroom for this evening's concert.
Concert begins.
Enjoy a **performance** as part of the Festival Adjudicated Concert (20 minutes performance time, 5 minutes on/off time).
After the performance, you will be escorted to the foyer to store instruments and then return into the audience for the remainder of the concert.
After the concert, collect your instruments from the foyer and return to your hotel.

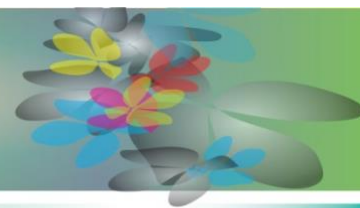


DAY FIVE: Wednesday, March 25, 2020 – HONOLULU (L) – Command Performance

- Early Morning** Enjoy breakfast on own.
After breakfast, load the coach and transfer to Pearl Harbor where you will have the chance to tour the USS Arizona Memorial.
- The USS Arizona Memorial is the final resting place for many of the battle ship's 1,177 crew members who lost their lives on December 7, 1941. The Memorial commemorates the site where World War II began for the United States.*
- Afternoon** Later, load the coach and transfer to the Festival Luau (location – TBC).
Upon arrival, the Festival Photographer will take the mass Festival Photograph.
Afterwards, enjoy a buffet lunch and some other fun luau activities (Polynesian dancing, etc.).
Luau concludes. Return to the hotel.
- Evening** Enjoy some free time for sightseeing on own.
Enjoy dinner on own.
After dinner, load the coach and transfer to Hawaii Theatre.
Attend (or possibly perform as part of) the **Festival Command Performance Concert**.
Afterwards, load the coach and return to the hotel.



THE PACIFIC BASIN MUSIC FESTIVAL



E x p l o r e T h e W o r l d W i t h M u s i c

DAY SIX: Thursday, March 26, 2020 – HONOLULU

Morning Enjoy breakfast on own.
After breakfast, check out of the hotel and load the coach.
~9:00am Transfer to the airport.
10:00am Upon arrival, check-in to your flight and proceed through security on to your departure gate.
You may wish to purchase food at this time to bring on the plane with you.
12:15pm Depart for California on Hawaiian Airlines HA48.
8:15pm Arrive into Oakland International Airport (OAK)!
Proceed to baggage claim to collect your luggage.
Return home via your own transportation.

WELCOME HOME!!!



THE PACIFIC BASIN MUSIC FESTIVAL



E x p l o r e T h e W o r l d W i t h M u s i c

JOHANSEN HIGH SCHOOL CONCERT BAND 2020 PACIFIC BASIN MUSIC FESTIVAL

March 21 – 26, 2020

As of: August 13, 2019

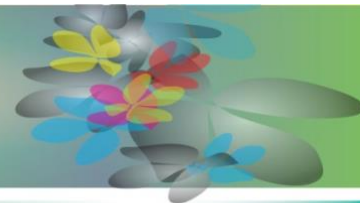
PACKAGE INCLUSIONS:

- ◆ ACTUAL Roundtrip, economy-class airfare on Hawaiian Airlines (OAK-HNL-OAK) including estimated taxes and fuel surcharges (*subject to change until ticketing*)
- ◆ Five (5) nights' hotel accommodation at the Waikiki Resort
- ◆ All required group coach transportation during the festival per itinerary (including airport in Honolulu, and a lei greeting)
- ◆ Meals:
 - ◆ Lunch – One (1) Festival Luau and buffet lunch
 - ◆ Dinner – One (1) Festival Welcome Dinner/Dance Party
- ◆ Festival Directors' Reception
- ◆ Workshop & performance arrangements as follows:
 - ◆ Festival performance and recorded adjudication comments (20 minutes)
 - ◆ PBMF Outdoor Series Performance at Ala Moana or similar
 - ◆ 60-minute workshop with a Festival Faculty Member
 - ◆ Exchange Rehearsal with another festival ensemble
 - ◆ 60-minute rehearsal
- ◆ Visit to Pearl Harbor and the USS Arizona Memorial
- ◆ Festival performance recording
- ◆ Official Festival Souvenir Program, Festival T-Shirt and Festival Artist Pass Lanyard for each participant
- ◆ Festival Award Plaque
- ◆ Festival registration fees & access to all Festival concerts & events
- ◆ Official Festival photographer at adjudicated performance venues and luau
- ◆ One souvenir print of the Festival Luau photo (additional prints of the luau and group pictures can be ordered separately)
- ◆ Percussion and other equipment as noted: Conductor's Podium, Piano/Keyboard, two (2) String Basses, Timpani (set of 4), Concert Bass Drum, Marimba, Xylophone, Vibraphone, Chimes (Tubular Bells), Orchestra Bells (Glockenspiel), Tam-Tam, stands

PACKAGE EXCLUSIONS:

- ◆ Baggage fees
- ◆ Coaching to/from OAK airport
- ◆ Meals not mentioned in Inclusions
- ◆ Items of a personal nature (laundry, room service, internet connection fees, etc.)
- ◆ Additional sightseeing excursions
- ◆ Medical, Cancellation, or Instrument Insurance

THE PACIFIC BASIN MUSIC FESTIVAL



E x p l o r e T h e W o r l d W i t h M u s i c

JOHANSEN HIGH SCHOOL CONCERT BAND 2020 PACIFIC BASIN MUSIC FESTIVAL

March 21 – 26, 2020

As of: August 13, 2019

PACKAGE COST PER PERSON

*Based on a minimum of 50 travelers
(Gratis is based on Double occupancy price)*

Five (5) Night Package	QUAD	TRIPLE	DOUBLE	SINGLE
Waikiki Resort	US \$1,628.00	US \$1,718.00	US \$1,888.00	US \$2,388.00

NOTES

- ◆ **Airfare:** ACTUAL Airfare on Hawaiian Airlines has been included in the above costs. World Projects is currently holding fifty (50) total seats. The base fare is guaranteed – taxes and surcharges are subject to change until ticketing – should additional taxes or surcharges be levied, World Projects retains the right to pass on all such surcharges to Johansen High School Concert Band.
- ◆ **Baggage Fees:** Baggage fees are set by Hawaiian Airlines. Hawaiian Airlines currently (as of August 13, 2019) charges \$30 for the first checked bag (\$60 roundtrip) and \$40 for the second checked bag (\$80 roundtrip), provided each bag is less than 50 lbs. and has does not exceed 62 linear inches. Johansen High School will be responsible for all baggage fees. Fees are to be paid at the airport at the time of check-in.
- ◆ **Costs:** Costs represented above are based on 2020 festival rates.
- ◆ **Payments:** All payments must be made by school check, bank check, or cash – credit cards will not be accepted.
- ◆ **Quad / Triple Rooms:** Quad is four (4) people per room / two (2) double beds per room and triple is three (3) people per room / two (2) double beds per room – sharing beds will be necessary.
- ◆ **Gratis:** Gratis is based on double occupancy price.
- ◆ **Numbers:** World Projects reserves the right to recost the tour should the number of travelers fall above or below the numbers shown above.
- ◆ **Agreement:** World Projects will issue a Performance Agreement detailing the costs, inclusions/exclusions, payment and cancellation schedule, and terms of the tour proposal for the director to sign.
- ◆ **Travel Protection Plan:** World Projects will purchase the Student Protection Plan for each participant. Details of the plan will be sent to the group director.
- ◆ **Required Forms:** All travelers will be required to submit signed liability waivers and medical authorizations forms as issued by World Projects to participate in the festival.

PAYMENT AND CANCELLATION SCHEDULE

Date	Payment / Type	Cancellation / Refund
RECEIVED	US \$2,000 per group deposit	Non-refundable
RECEIVED (50)	US \$50 per person Air Deposit	100% refundable to December 16, 2019
November 1, 2019	US \$350 per person	50% refundable to December 15, 2019
January 15, 2020	Final Air Balance	Non-refundable
February 1, 2020	Balance in Full	50% refundable to February 15, 2020