

# ***Fractured Fragments***

for piano, drums, and fixed media

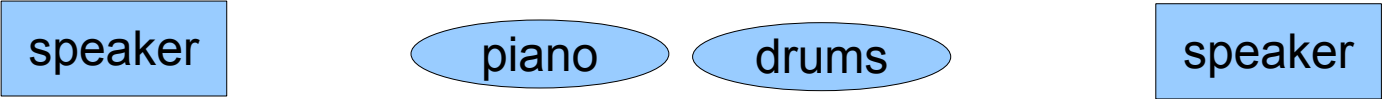
Brad Robin (2016-2017)

# Fractured Fragments

Duration: 8'30"

## Performance notes

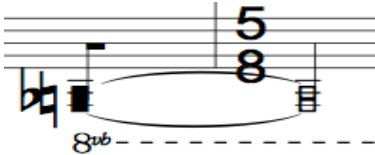
### SETUP:



### ELECTRONICS:

Amplification reinforcement can be used to blend the acoustic instruments with the electronics, but is not necessary. Electronic cues are all fixed media, no live electronics, and can be advanced by a midi controller used by either player, though preferably by a third party. Contact the composer at [bradbardo@gmail.com](mailto:bradbardo@gmail.com) to request performance materials.

PIANO: Chromatic cluster to be played within the indicated range



DRUMS: Perform with conventional drumsticks. Cymbals are to be allowed to ring unless indicated otherwise.



♩ = 72

# Fracture

dedicated to Steve Harlos

Brad Robin

**Piano**  
assertively  
*mf*

**Drum Set**  
Use "flip sticks" (one side stick, one side yarn)

**Electronics**  
1 2 3 4 5 6 7

---

**Pno.**  
*f* *loco* *loco* *15<sup>me</sup>* *loco* *espress.* *mp*

**D. S.**  
*mp*

**EI.**  
8 9 10 11

---

**Pno.**  
*sfz* *sfz* *sfz* *mf* *loco* *15<sup>me</sup>*

**D. S.**  
yarn *pp* *mp* sticks *pp* *mp* *pp* *mp*

**EI.**  
12 13 14 15 16

Fracture

15

Pno. *mf* *loco* *sub f* *mf* *sfz* *sfz* *mp* *loco* *sfz* *heavily*

D. S. *mp* *p* *mf* *p*

EI. 17 18 19 20 21

20

Pno. *mf* *sub f* *loco* *p* *mf*

D. S. *mf* *pp* *mp* *pp* *sub p* *mf* *p* *mf*

EI. 22 23 24 25 26

24

Pno. *heavily* *loco* *f* *loco*

D. S. *loco*

EI. 27 28 29 30 31

Fracture

28

Pno. *f* *mf* *p* *mf*

D. S. *sfz* *mp* *f* *mp* *p*

Ei. 3/2 3/2 4/4 4/4

31

Pno. *f* *mf*

D. S. *sfz* *mf*

Ei. 3/4 2/4 3/4 2/4 3/4 2/4

35

$\text{♩} = 90$

Pno. *mf* *sfz* *mf*

D. S. *f* *mf*

Ei. 2/4 3/4 3/4 4/4 5/8 4/4

Fracture

♩ = 120

40 *loco*  
 Pno. *mp* *aggressively*  
 D. S.  
 El. 39 40

44  
 Pno. *mf* *languidly* *p* *mf*  
 D. S. *mp*  
 El.

48  
 Pno. *f*  
 D. S. *mf*  
 El. 41 42

52

Pno. *(f)* *mf*

D. S.

Ei. *mf* 43

56

Pno. *f* *litigly* *loco*

D. S.

Ei. 44 45 46

$\text{♩} = 80$

61

Pno.

D. S.

Ei. 47

Fracture

65

Pno. *sfz* *ff*

D. S.

Ei. 48 49 50

70

Pno. *f*

D. S.

Ei.

75

Pno. *(loco) sfz* *mf* *f* *15<sup>tes</sup> loco*

D. S.

Ei. 51 52 53



80

Pno. *loco* 3 *S<sup>se</sup>* *loco* 7 *loco* 8 *p* *mf* 2 *loco* 5

D. S. 3 *(f)* 4 7 8 *p* 2 *mf* 5

Ei. 3 4 7 8 2 4 5 4

54

84

Pno. 3 *S<sup>se</sup>* *loco* 4 *ff* 3 *loco* 3 *S<sup>se</sup>* 5

D. S. 3 4 4 4 3 3 3 3 *f* 3 3 *loco* 5

Ei. 5 4 4 4 5 4 5 4

88

Pno. *loco* 5 *S<sup>se</sup>* 4 *loco* 4 4 4

D. S. 5 4 4 4 4 4 4 4

Ei. 5 4 55 55 4 4 80 4

# Fragments

Brad Robin

$\text{♩} = 65$   
*pensively*

Piano

Drum Set

Electronics

5

Pno.

D. S.

EI.

9

Pno.

D. S.

EI.

Fragments

13

Pno. *mf* *assertively* *pensively* *mf* *p* *mf* *mp sub* *sfz*

D. S. *p* *mf sub* *p* *f* *p* *sfz* *mf* *p* *sfz*

EI.

17

Pno. *aggressively* *f sub* *mf sub* *f* *mf* *aggressively* *f*

D. S. *mf* *mf* *p* *p*

EI.

2/4

21

Pno. *ff* *pensively* *mf sub* *p* *mf*

D. S. *f* *p* *f* *mp*

EI.

2/4

26

Pno. *mf* *p* *mf* *p*

D. S. *mp* *p* *mf* *p*

Ei.

31

Pno. *mf* *f* *p* *mp*

D. S. *p* *f* *mf* *f* *p* *mf sub* *p*

Ei.

36

Pno. *15<sup>ma</sup> loco* *loco* *loco* *loco* *mf*

D. S. *mp* *pp* *mp*

Ei.

41

Pno.

D. S.

Ei.

*f* *ff* *f*

*mf* *f* *mf* *f* *mf*

46

Pno.

D. S.

Ei.

*gaining momentum...*

*Uh! Interrupted again...*

*mf* *f*

*mf*

4/4

50

Pno.

D. S.

Ei.

*mf*

54

Pno.

D. S.

El.

58

Pno.

D. S.

El.

62

Pno.

D. S.

El.

66

Pno.

D. S.

Ei.

*mf*

*mf* *p* *mf* *p* *mf* *p*

70

Pno.

D. S.

Ei.

*p sub* *sfz* *mf* *f* *mp* *f*

*p* *sfz* *sfz* *mf* *f*

74

Pno.

D. S.

Ei.

*mf* *p*

*sfz* *p* *mf* *p* *pp*

Take 2 soft yarn.

soft yarn