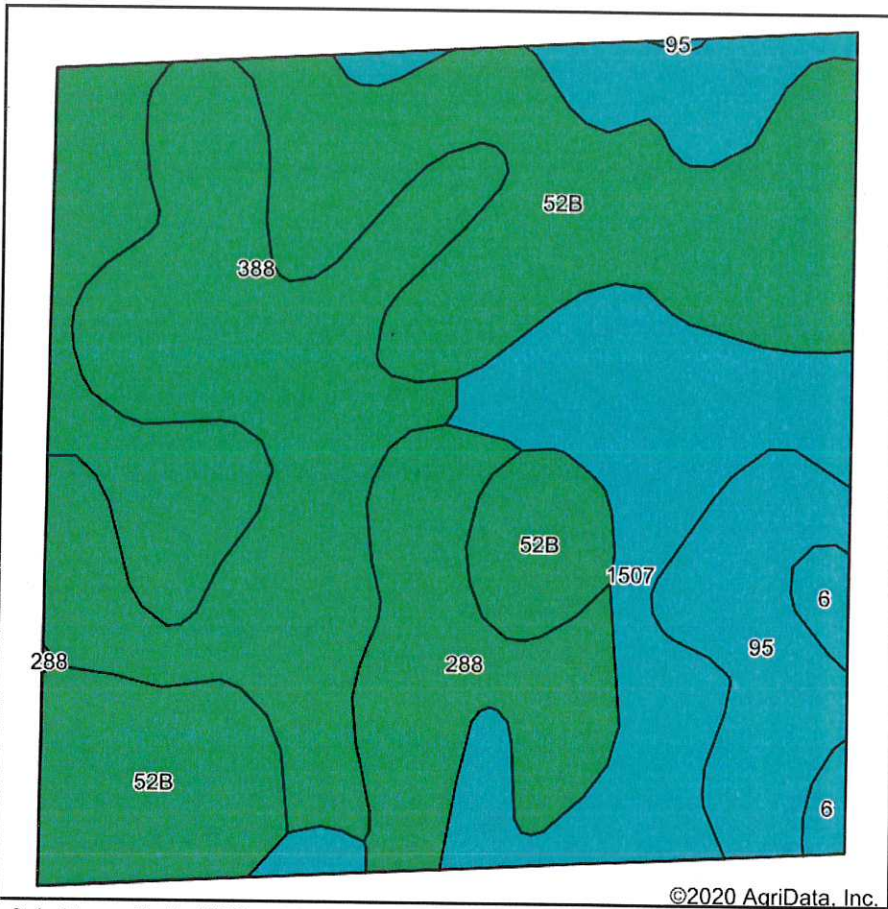
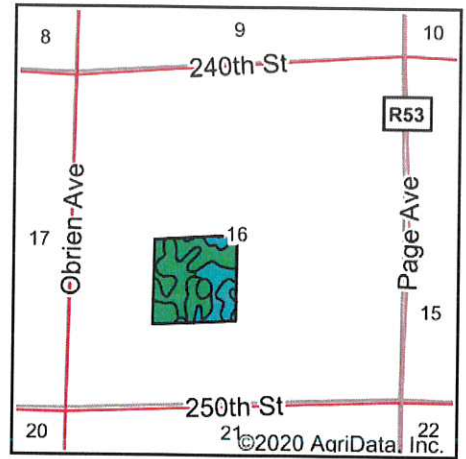


# Soils Map



Soils data provided by USDA and NRCS.

©2020 AgriData, Inc.



State: **Iowa**  
 County: **Wright**  
 Location: **16-91N-24W**  
 Township: **Lincoln**  
 Acres: **40.05**  
 Date: **12/16/2020**

Gold-Eagle Cooperative



Maps Provided By



Code	Soil Description	Acres	Percent of field	CSR2 Legend	Water Table	Restrictive Layer	Septic Limits	Foundation Limits	Non-Irr Class *c	CSR2**	CSR	*n NCCPI Soybeans
52B	Bode clay loam, 2 to 6 percent slopes	14.98	37.4%		3.6ft.	> 6.5ft.	very limited	somewhat limited	Ile	91	78	82
388	Kossuth silty clay loam, 0 to 2 percent slopes	9.39	23.4%		0ft.	> 6.5ft.	very limited	very limited	Ilw	86	77	89
1507	Brownton silty clay loam, 0 to 2 percent slopes	7.97	19.9%		0ft.	> 6.5ft.	very limited	very limited	Ilw	62	72	65
288	Ottosen clay loam, 1 to 3 percent slopes	4.14	10.3%		1.5ft.	> 6.5ft.	very limited	very limited	Iw	91	84	82
95	Harps clay loam, 0 to 2 percent slopes	3.03	7.6%		0ft.	> 6.5ft.	very limited	very limited	Ilw	72	62	82
6	Okoboji silty clay loam, 0 to 1 percent slopes	0.54	1.3%		1.3ft.	> 6.5ft.	very limited	very limited	Illw	59	57	74
<b>Weighted Average</b>										<b>82.2</b>	<b>75.7</b>	<b>*n 80.2</b>

\*\*IA has updated the CSR values for each county to CSR2.

\*n: The aggregation method is "Weighted Average using all components"

\*c: Using Capabilities Class Dominant Condition Aggregation Method

Soils data provided by USDA and NRCS.