

AUCTION

on the premises

THURSDAY

May 16, 1985

Starting at 10:00 A.M.

Machinery No Longer Needed
For Future Operation

HOWARD ROTAVATOR
102 Howard Avenue
Muscoda, Wisconsin

DIRECTIONS FROM CHICAGO:

Illinois Tollway I-90 West to Madison, Wisconsin. Exit Route 12 West to Route 14 West to Route 60 to Muscoda.

Return to:

E V B Corporation
939 Prospect Avenue
Elmhurst, IL 60126

First Class Mail

E V B CORPORATION

AUCTIONEERS — APPRAISERS

939 Prospect Avenue • Elmhurst, Illinois 60126

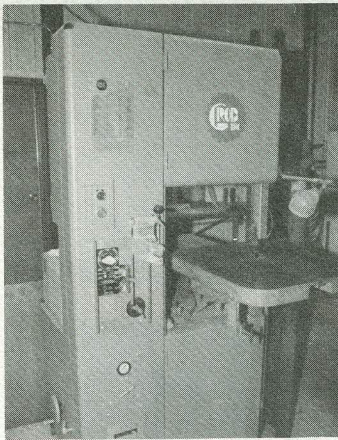
(312) 834-3148

E. Barauskas, Auctioneer

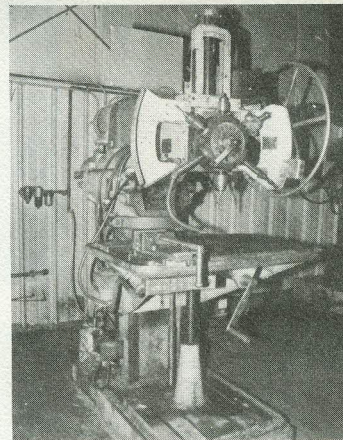
(312) 833-6214



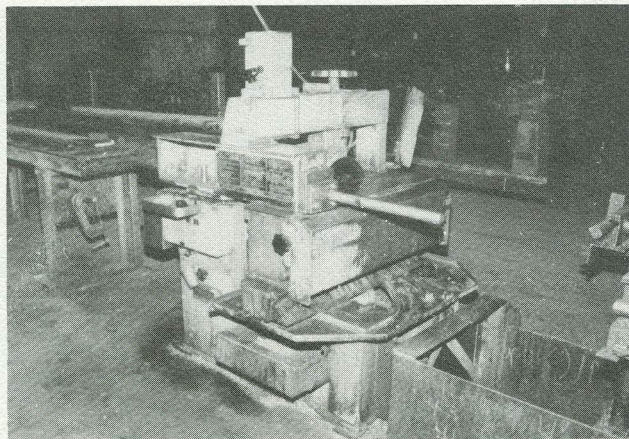
B & S #2 SURFACE GRINDER



GROB VERTICAL BAND SAW



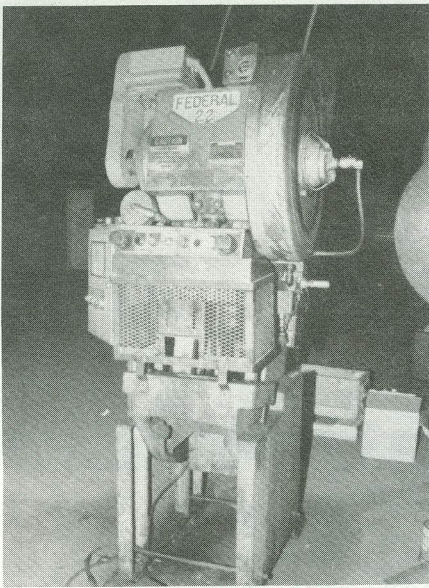
BURGMASER TURRET DRILL



TRENNJAEGER COLD SAW

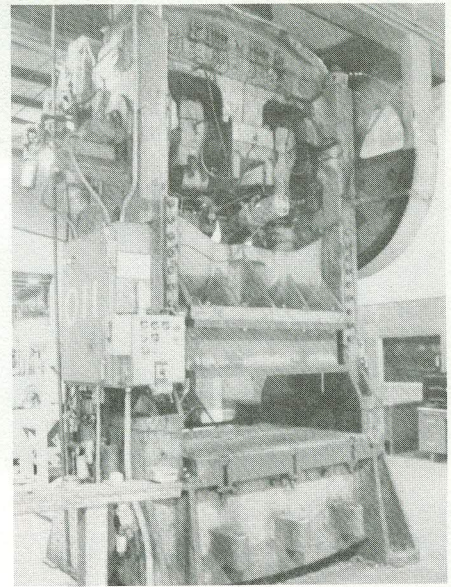


TOWMOTOR 6000# FORK LIFT

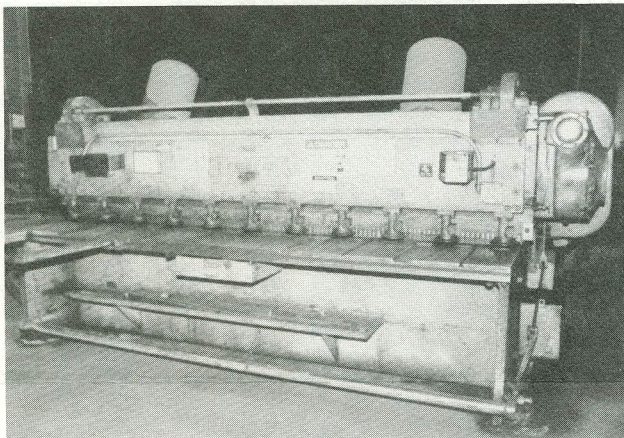


FEDERAL #22 OBI PRESS

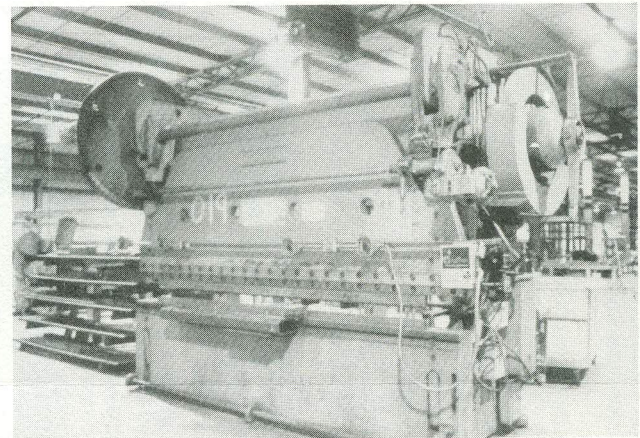
INSPECTION
Starting Mon.
May 13, 14, 15
and
Morning
of Sale



TOLEDO 94½E 200 TON PRESS



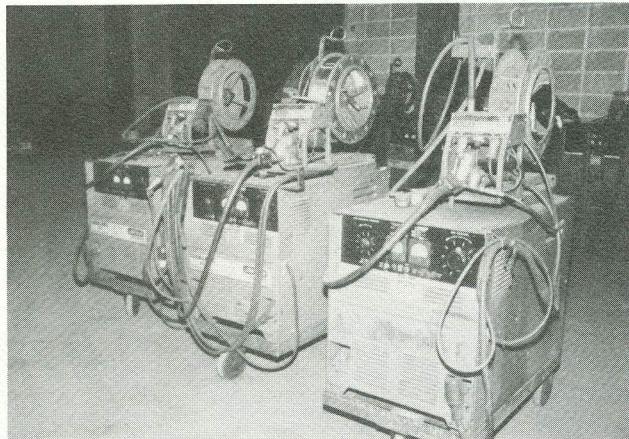
CINCINNATI #1810 SHEAR



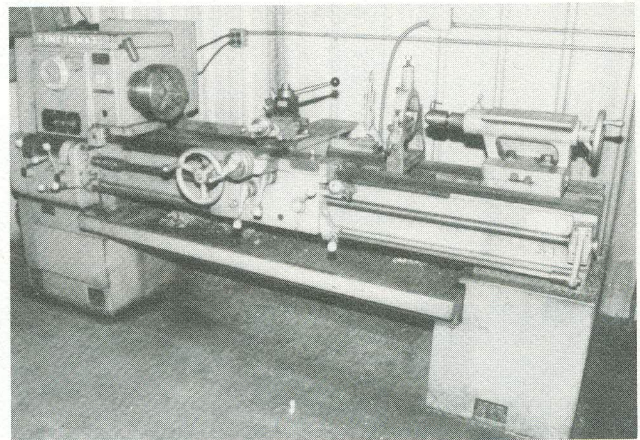
CINCINNATI 12 FT. 90 TON PRESS BRAKE



SALE DATE
May 16, 1985
Starting at 10 A.M.



LINCOLN ARC WELDERS



CINCINNATI LATHE

FAB AND TOOL ROOM EQUIPMENT

E V B CORPORATION

AUCTIONEERS — APPRAISERS

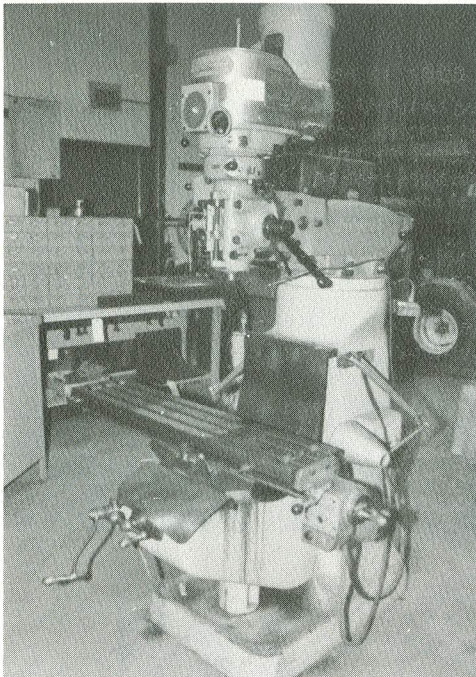
939 Prospect Avenue • Elmhurst, Illinois 60126

(312) 834-3148

E. Barauskas, Auctioneer

(312) 833-6214





BRIDGEPORT VERTICAL MILL

PRESS BRAKES

CINCINNATI 12' 90 TON CAP. BRESS BRAKE: S/N 20217, 126" Between Uprights, 12' Top & Bottom, Power Elevation, Lub System, Rockford Safety & AC Motor Drive.

LOT ASST'D. STRIPPIT PUNCHES

LOT ASST'D. BRAKE DIES

PRESSES

TOLEDO 94½E 200 TON D.C. SS PRESS: Machine Equipped with Air Clutch, Double Back Gear, 10" Stroke with 37" Shut Height, 46" x 60" Bed Size, Power Elevation, Forward & Reversing C/W AC Motor and Controls.

FEDERAL #22 OBI PUNCH PRESS: S/N 22-107, Machine Equipped with Air Clutch, 2½" Stroke, Bed Space 12x20, 22 Ton cap. SPM 150 Throat Depth 7", Die Space 8½ C/W AC Motor.

SHEAR

CINCINNATI #1810 POWER SQUARING SHEAR: S/N 32224, 10'x¼" cap. C/W Squaring Arm, Back Gauges, Air Counterbalance, Holddowns, & AC Motor Drive.

LATHES

CINCINNATI TRAY TOP 17"X54 TOOL ROOM LATHE: S/N 1W3H55-295 Complete with Dial Thread, QCG, Spdl. Speeds 25 to 980 RPM, Micro Stop, Pan Bed and AC Motor Drive.

LATHE: 24" Swing x 17' long Bed C/W Chuck, Tail Stock and AC Motor Drive Unit.

CLAUSING MODEL 1501 15"X50" TOOL ROOM LATHE: S/N 151028 C/W Dial Thread, QCG, 45 to 2000 RPM Spdl. Speeds, Pan Bed and AC Motor Drive.

VERTICAL MILL

BRIDGEPORT V-RAM VARIABLE SPEED VERTICAL MILLING MACHINE: S/N Br12-169413,9" x 48" T-Slotted Table Spdl. Speeds 60 to 4200 RPM, 1½ HP AC Motor Drive with Power Cross Travel.

MULTI SPINDLE DRILL

NATCO #B4B-572 HOLESTEEL MULTI SPINDLE DRILL: Machine Equipped with 20 Spindles, 1½ Upper Drives, 38"x48" Work Table, Coolant System, AC Motor & Controls.

BAND SAW

GROB TYPE 4V-18 VERTICAL BAND SAW: S/N 2179 C/W Welding & Grinding Attachment, 24"x28" Table & AC Motor Drive.

RADIAL DRILL

MAS 11" COLUMN X 4' ARM RADIAL DRILL: S/N 8480 C/W Box Table & AC Motor Drive.

SURFACE GRINDERS

DO ALL MODEL DH-612 SURFACE GRINDER: S/N 138-651744 C/W 6x12 Permanent Magnetic Chuck, Cabinet Base Type & AC Motor Drive.

B&S #2 SURFACE GRINDER: S/N 20033 C/W Magnetic Chuck & AC Motor Drive.

WELDERS

8 - LINCOLN IDEALARC MODEL R35 PORTABLE ARC WELDERS: 400 Amp cap. C/W Lincoln Squirt Welder Wire Feed & Cables, S/N AC357926 - AC352104 - AC357881 - AC354201 - AC357882 - AC465579 - AC357873.

2 - LINDE MODEL V1-253 PORTABLE ARC WELDER: 250 Amp cap. C/W Wire Feed & Cables, S/N B77-C-11377 - ?

LINDE MODEL V1-402 PORTABLE ARC WELDER: S/N D-78B12510 400 Amp cap. C/W Wire Feed & Cables.

SPOT WELDER

THOMSON MODEL CA2 PRESS TYPE SPOT WELDER: S/N 19810 150KVA, 18" Throat, Water Cooled Electrodes and Controls.

IRON WORKER & PUNCH

PEDDINGHAUS 50 TON MODEL 210 SUPER 13 UNIVERSAL IRON WORKER: S/N 4404456073034 Shear Punch, Rod Cutting, Notching C/W Lub System, Asst'd. Punches & AC Motor Drive.

KLING 110 TON BACK GEARED HEAVY DUTY PUNCH: 24" Throat, T-Slotted Table & AC Motor Drive.

SAW

TRENNJAEGER MODEL LPC 110/440 COLD SAW: S/N GE-946 4"x16" cap. C/W In & Out Table, Stabilizer Adjustment & AC Motor Drive.

HACK & BAND SAW

MARVEL #8 POWER HACK SAW: Max. Open Height 6" C/W Vise and AC Motor Drive.

MARVEL #612 HORIZONTAL BAND SAW: 6"x12" cap. Rectangular, 6" Round C/W Vise & AC Motor Drive.

TURRET DRILL

BURGMASER MODEL 2-BR SIX SPINDLE TURRET DRILL: S/N 2049 24"x36" T-Slotted Table, Radial Arm, Coolant & AC Motor Drive.

BOX DRILL

SIBLEY #5M.T. BOX DRILL: S/N 8132 C/W Sliding Head, 24x28 Table, Coolant & AC Motor Drive.

VERTICAL BELT SANDERS

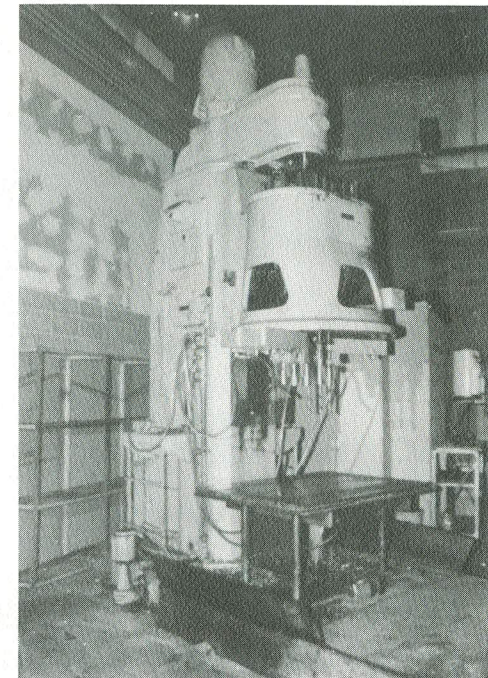
AEM MODEL 25-48 SLAG GRINDER: S/N MO-2543, Narrobelt 24" Belt Conveyor C/W AC Motor & Controls.

ROTO-CLONE SIZE 8 TYPE D COMBINED EXHAUSTER & DUST COLLECTOR: Hopper Type, S/N 20401 C/W AC Motor.

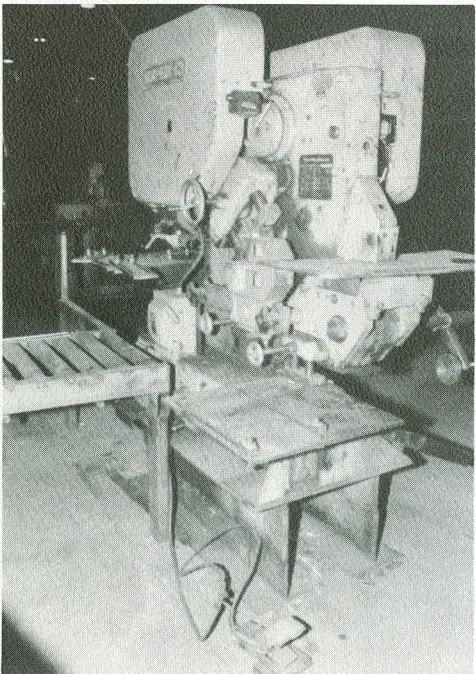
FLAME CUTTER

LINDE CM-50 FLAME CUTTER: C/W Lenatrol HL-7 Tracer, 4 Guns on Arm C/W Layout Table, Cutting Table & Controls & Gauges Type CM50CD, S/N 75-1-C-400.

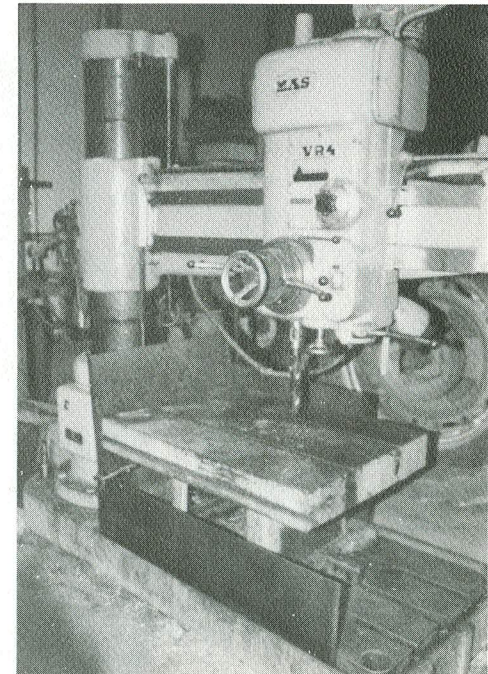
FORK LIFT TRUCKS & MATERIAL HANDLING



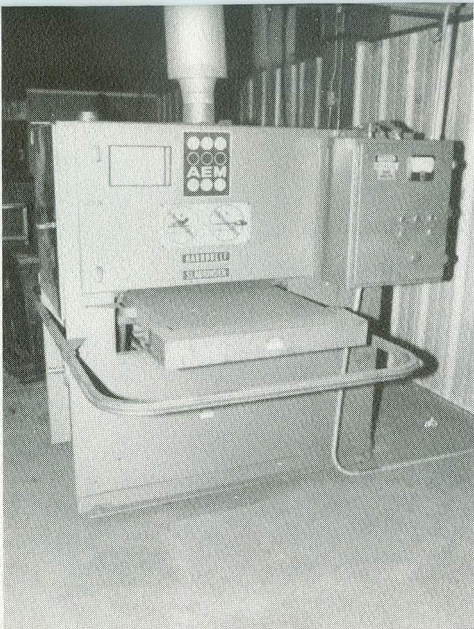
NATCO MULTI DRILL



PEDDINGHAUS 50 TON IRON WORKER



M A S RADIAL DRILL



A E M SLAG GRINDER

BAKER 5000# ELECTRIC FORK LIFT TRUCK: C/W Safety Cage, Solid Tires W/Charger.
PORTABLE 4000# JIB CRANE.
PORTABLE GANTRY.
BABELL & HOWE 1/2 TON FREE STANDING JIB CRANE: S/N 75-86239 C/W Harrington 1000# Electric Chain Hoist.
PALLET LIFT TRUCK: Factory Trucks.
TOWMOTOR 6000# MODEL V60 FORK LIFT TRUCK: S/N 89M436 C/W Safety Cage, Side Lift, Pneumatic Tires, Propane Driven.

FARM TRACTOR & TRUCK

KUBOTA MODEL L285 TRACTOR: 4 Cyl. Gas-Driven, Pneumatic Tires, Low Hours.
1981 FORD CUSTOM F350 EXTENDED CAB PICK-UP TRUCK.

AIR COMPRESSOR

GARDNER DENVER 40 HP ELECTRA SCREW CABINET TYPE AIR COMPRESSOR: C/W 40 HP AC Motor & Controls.

ASSORTED MACHINERY

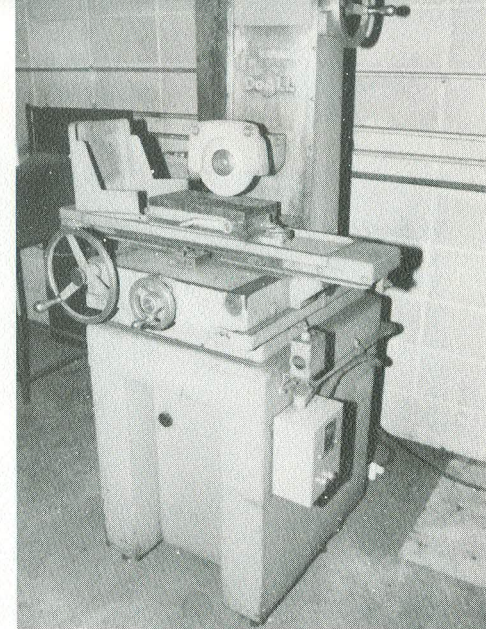
LE LAND GIFFORD 3 SPINDLE PRODUCTION DRILL: C/W Individual Motor Drives.

FAMCO ARBOR PRESS • HEAVY DUTY DIE TRUCKS • PNEUMATIC PRESSES • OSTER PIPE THREADER • SHOP PRESS • HYDRAULIC PUMPS • GRACO LUB • DE WALT RADIAL ARM SAW • PORTABLE SCALES • SETCO SNAG GRINDER • DOUBLE END GRINDERS • POWERMATIC VERTICAL BELT SANDER • EVERETT ABRASIVE WHEEL CUT OFF SAW •

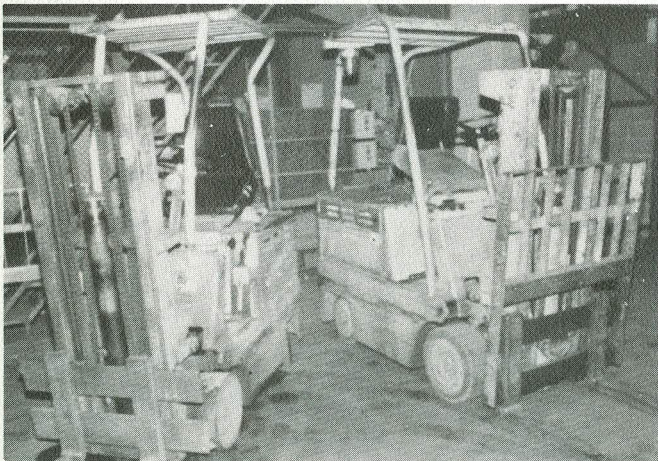
ELECTRIC HOISTS • PALLET LIFT TRUCKS • HEAVY DUTY SHELVING • PLATFORM SCALES • SHOP TRUCKS • TORCHES • LADDERS • BENCHES • FLOOR SWEEPER • SHOP CARTS • TOOL CABINETS • ROTO BINS • ROURA DUMP HOPPERS •

DRILLS REAMERS • TAPS • END MILLS • OFFSET BORING HEADS • BENCH VISES • MACHINES VISES • HOLDDOWNS • DRILL CHUCKS • PNEUMATIC HAND TOOLS • ELECTRIC HAND TOOLS •

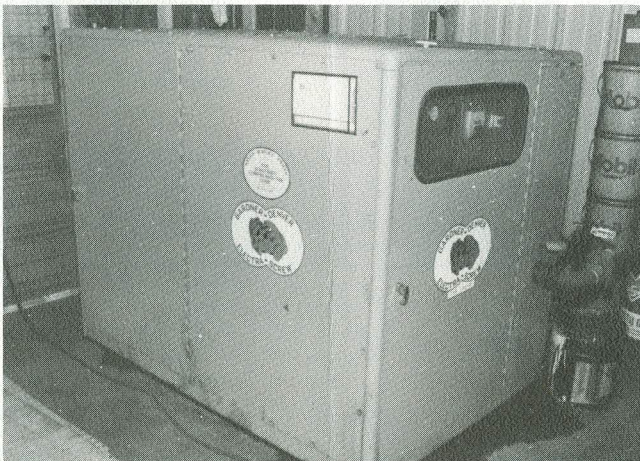
LOT ASST'D. STEEL ADJUSTABLE SHELVING • POWER BELT CONVEYOR • STEEL STOCK RACKS • ASST'D. FACTORY TRUCKS • ROLLER CONVEYOR • STACKING TYPE CORRUGATED BOXES • STACKING TYPE PARTS BINS •



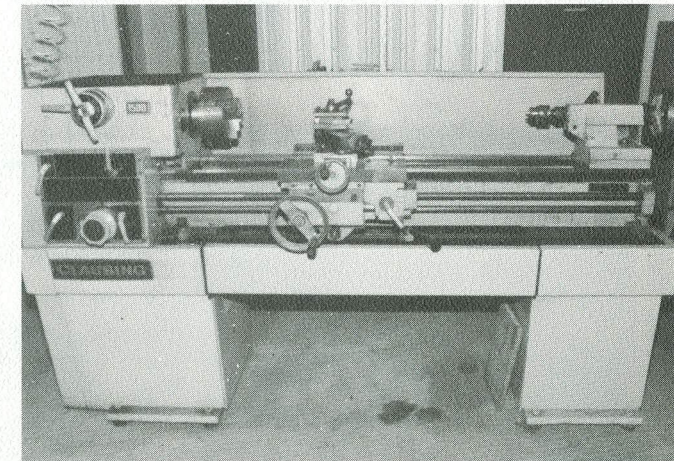
DO ALL SURFACE GRINDER



FORK LIFT TRUCKS



GARDNER DENVER AIR COMPRESSOR



CLAUSING LATHE

TERMS OF SALE

Everything will be sold to the highest bidder or bidders for cash in accordance with the Auctioneer's Customary Terms of Sale, copies of which will be posted on the premises. All sales are for Cash. A deposit of 25% by cash or certified check will be required on all purchases. All payments must be made by Cash or Certified Checks made payable to E.V.B. CORPORATION. E.V.B. CORPORATION assumes no liability for errors or omissions in this listing. E.V.B. CORPORATION expressly reserves the right to determine the manner of conducting the auction and to sell items by individual or group lots as it may deem appropriate.

**E V B CORPORATION
INDUSTRIAL AUCTIONEERS & APPRAISERS**

**939 PROSPECT AVENUE
ELMHURST, ILLINOIS 60126
312/833-6214 312/834-3148**

E. BARAUSKAS, AUCTIONEER

IMPORTANT NOTICE

The buyer acknowledges that he or an agent has inspected all of the assets upon which he will be bidding and/or does purchase. Buyer agrees to accept assets purchases "as is", "where is", "in place" and "with all faults". The auctioneer expressly disclaims on the part of the auctioneer as agent and the seller, any warranty as to fitness or usability of all the assets, and the buyer expressly waives any claim in respect to any possible future use of any asset purchased for any purpose whatsoever. The buyer does hereby assume and does agree to indemnify and hold the auctioneer and seller harmless from any future claim which shall pertain to the fitness or use of that asset as being purchased.