



Business Resource Guide



EUREKA
SPRINGS

MAYOR'S TASK FORCE
ON

ECONOMIC DEVELOPMENT
EUREKASPRINGSINC.ORG

Contacts

Licenses/
Permits

Sales
Tax

Tourism
Business

Construction/
Building

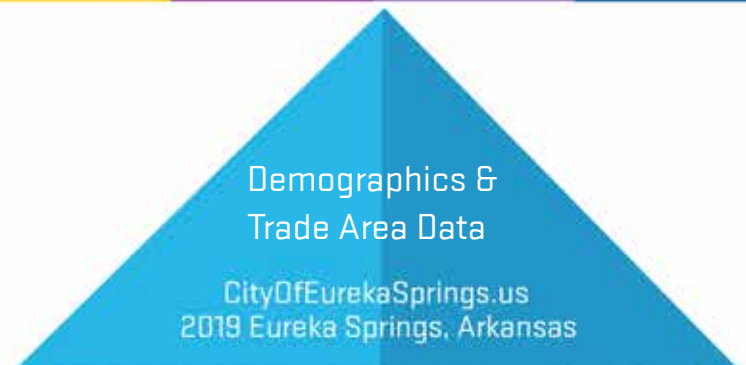
Forms

Resources

Check List

Demographics &
Trade Area Data

CityOfEurekaSprings.us
2019 Eureka Springs, Arkansas





NO PLACE LIKE IT



Eureka Springs is an authentic historic village nestled in the mountains and surrounded by lakes, rivers, streams and wide open spaces. The entire downtown district is on the National Registry of Historic Places (with Significance). Over 65 natural springs have been preserved throughout town and most are featured in pocket parks. Eureka Springs has a huge connected trail system for mountain biking, hiking and trails - 35 miles and growing. And - Eureka Springs has the only downhill gravity mountain trail between the Appalachians and the Rockies! The vibe of Eureka Springs is eclectic, sophisticated yet casual, arts, film, entertainment, outdoor recreation and a unique culinary scene. There are over 100 casual and gourmet restaurants, bistros and roadhouses - but only 3 are chain eateries. Eureka Springs is dedicated to preserving and enhancing quality of life, a distinct sense of place and nature all wrapped up in a vibrant creative culture. There's simply no other place like Eureka Springs!

Eureka Springs is a Natural for Entrepreneurs

Steeped in history and already in the future - Eureka Springs welcomes everyone. The creative economy base and entrepreneurial spirit of Eureka Springs is the perfect launching pad for new concepts, ideas, products and innovative services. As a premiere tourist destination we are an ideal setting for product testing - especially in the culinary, outdoor adventure and entertainment industries.

Our Simple Business Vision:

To make it easy for you to be successful in launching or expanding your business and loving where you live, work and play.

BUSINESS ADVANTAGES



A CENTRAL LOCATION

Eureka Springs and Northwest Arkansas are literally the center of the U.S., providing easy access and distribution.

QUALITY OF LIFE

Eureka Springs is great for business and great for life! The "island" of Eureka Springs is rich with natural beauty, art, culture, the finest culinary scene in the region, history, open spaces, preservation, trails, rivers, lakes, green, low-to-no crime and a creative economic culture. Live in town, right outside of town or on Beaver Lake, King or White River or perched on a mountain top – your life your way.

AFFORDABILITY

Eureka Springs is a value with a very low cost of living (Arkansas is second to the lowest in U.S. for cost of living.)

A CREATIVE CULTURE OF ENTREPRENEURSHIP AND INNOVATION

Entrepreneurship is in our DNA, and regional leaders are committed to sustaining and enhancing an environment that allows innovative businesses to start, grow and thrive. Ideas can become products, virtual services and companies. Our region encourages university research and private sector innovation by building a network of mentors, physical space, shared space and local investors.

TECHNOLOGY

Eureka Springs has state-of-the-art telecommunications systems through: Verizon, Cox Communication, AT&T and Windstream. Northwest Arkansas is home to many technology, science and business incubators and centers.

ACCESS TO CRITICAL MASS OF BUSINESS & AMENITIES

Within a 45-minute drive, commuting is easy to Walmart, Tyson Foods, J.B. Hunt Transport Services and many companies in the Fortune 500. Most are part of a supplier base that numbers over 1,300 who have located here to be close to their customers and because of the great business climate.

QUALITY TALENT POOL

Our region has a growing workforce of more than 350,000. The concentration of corporate headquarters attracts a large concentration of white-collar workers, nearly seven times higher than the national average. More than 40,000 college students attend universities and colleges in the region creating a talent-rich pipeline of potential employees. The explosion of growth in the area has created a large pool of skilled workers and technicians. The vibrant tourism industry of Eureka Springs attracts techies and creatives from all disciplines – visual and performing art, graphics, chefs, musicians, marketing, filmmaking and digital creative.

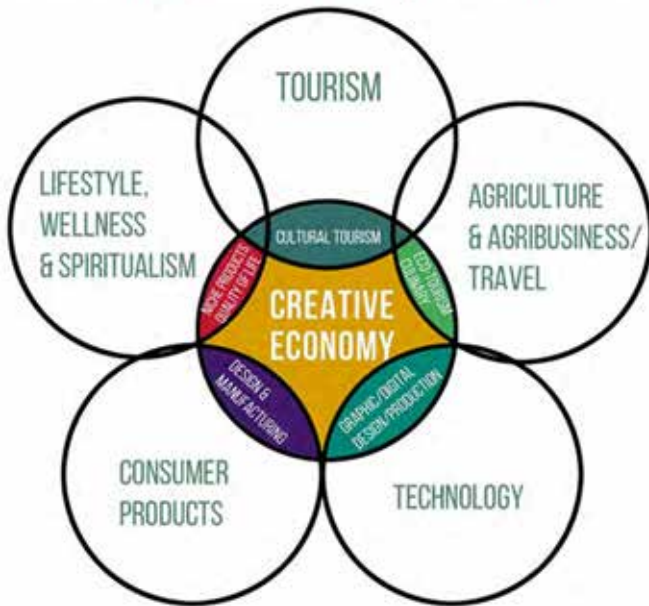
WE WANT YOU HERE!

We are ready to work with you to make your investment mutually beneficial.

ECONOMY



Creative Economy Connection



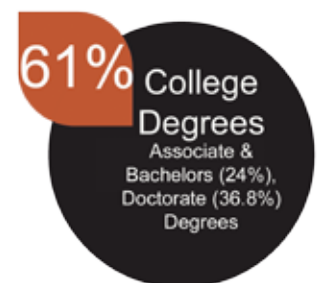
The creative economy of Eureka Springs provides a solid foundation for entrepreneurs, start-ups, organizations and independent contractors. At the heart of the creative economy are the cultural and creative industries that lie at the crossroads of arts, culture, business and technology.

"The creative economy is revitalizing manufacturing, services, retailing and entertainment industries.

It is changing where people want to live, work and learn - where they think, invent and produce."

-John Hawkins | Hawkins & Associates

Eureka Springs' creative economy translates into economic value, vitality, high quality of life in a vibrant and culturally rich location.



EUREKA SPRINGS
MARKET'S TREE PEOPLE
ONE
ECONOMIC DEVELOPMENT

VIBRANT &
AUTHENTIC

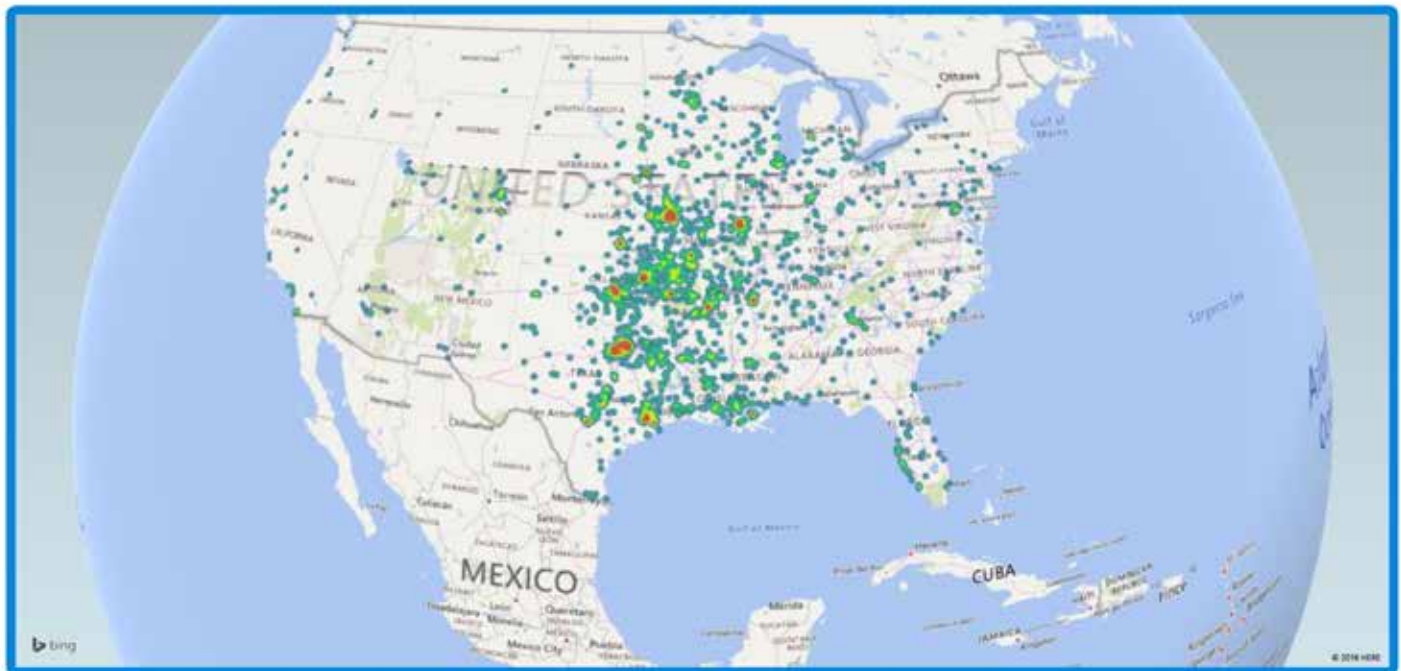




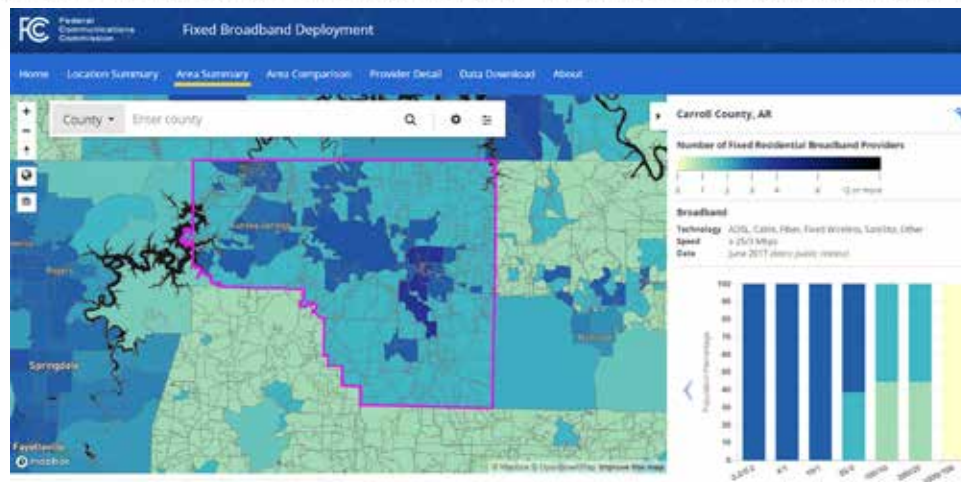
DESTINATION: EUREKA SPRINGS

Eureka Springs welcomes over 1.5 Million visitors from around the world every year. Retail Trade Area combined with our Visitor Trade Area makes Eureka Springs a very unique market for retailers. Particularly retailers with online e-commerce presence. Primary visitor demographic is 35-54; secondary is 25-49. With the growth of our trails, mountain biking and other outdoor adventure options, Eureka Springs is attracting a younger, more affluent market not only as frequent visitors, but as residents.

EUREKA SPRINGS VISITOR CLUSTERS



EUREKA SPRINGS WELCOMES VISITORS FROM 47 STATES AND 6 FOREIGN COUNTRIES.



MARKET



LOVE WHERE
YOU LIVE
AND WORK

A NATURAL
FOR BUSINESS

VIBRANT &
AUTHENTIC



Demographic and Income Profile

Eureka Springs Trade Area



Summary	Census 2010	2016	2021		
Population	6,048	6,104	6,167		
Households	3,010	3,074	3,123		
Families	1,706	1,699	1,704		
Average Household Size	1.99	1.96	1.95		
Owner Occupied Housing Units	2,152	2,138	2,170		
Renter Occupied Housing Units	858	936	953		
Median Age	55.3	57.2	59.2		
Trends: 2016 - 2021 Annual Rate	Area	State	National		
Population	0.21%	0.68%	0.84%		
Households	0.32%	0.66%	0.79%		
Families	0.06%	0.49%	0.72%		
Owner HHs	0.30%	0.63%	0.73%		
Median Household Income	3.03%	2.50%	1.89%		
Households by Income	2016		2021		
	Number	Percent	Number	Percent	
	<\$15,000	567	18.4%	568	18.2%
	\$15,000 - \$24,999	551	17.9%	434	13.9%
	\$25,000 - \$34,999	401	13.0%	325	10.4%
	\$35,000 - \$49,999	497	16.2%	480	15.4%
	\$50,000 - \$74,999	488	15.9%	617	19.8%
	\$75,000 - \$99,999	250	8.1%	301	9.6%
	\$100,000 - \$149,999	207	6.7%	258	8.3%
	\$150,000 - \$199,999	82	2.7%	101	3.2%
	\$200,000+	31	1.0%	38	1.2%
	Median Household Income	\$35,379		\$41,077	
Average Household Income	\$49,905		\$56,610		

Data Note: Income is expressed in current dollars.

Source: U.S. Census Bureau, Census 2010 Summary File 1. Esri forecasts for 2016 and 2021.

Climate: Four Seasons

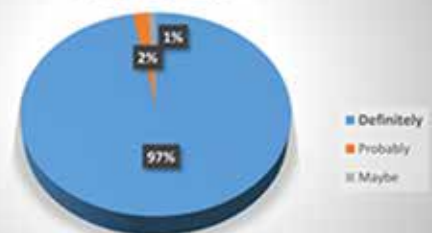
Monthly average temperatures and precipitation for Eureka Springs are shown below.

	Jan	Feb	Mar	Apr	May	Jun	Jul	Aug	Sep	Oct	Nov	Dec
Avg. High	46°	50°	61°	72°	78°	85°	90°	88°	81°	72°	58°	48°
Avg. Low	25°	28°	37°	47°	55°	62°	67°	65°	58°	48°	38°	28°
Daily Avg	36°	40°	50°	60°	67°	74°	78°	78°	70°	60°	48°	38°
Avg. Precip.	2.0 - 4.0 inches											

Note: All temperatures are in degrees Fahrenheit.

Eureka Springs is known for its Victorian architecture, but in actuality, the town has every type of architectural style from the 1800's to very contemporary homes. Pick your style and setting - city dweller, lake view, cabin in the woods, tree-toppers, contemporary, mid-century bungalows, rambling ranches, or Victorian mansions.

Would Recommend Living/Working in Eureka Springs



MARKET



Demographic and Income Profile

NORTHWEST ARKANSAS REGION COMPARISONS



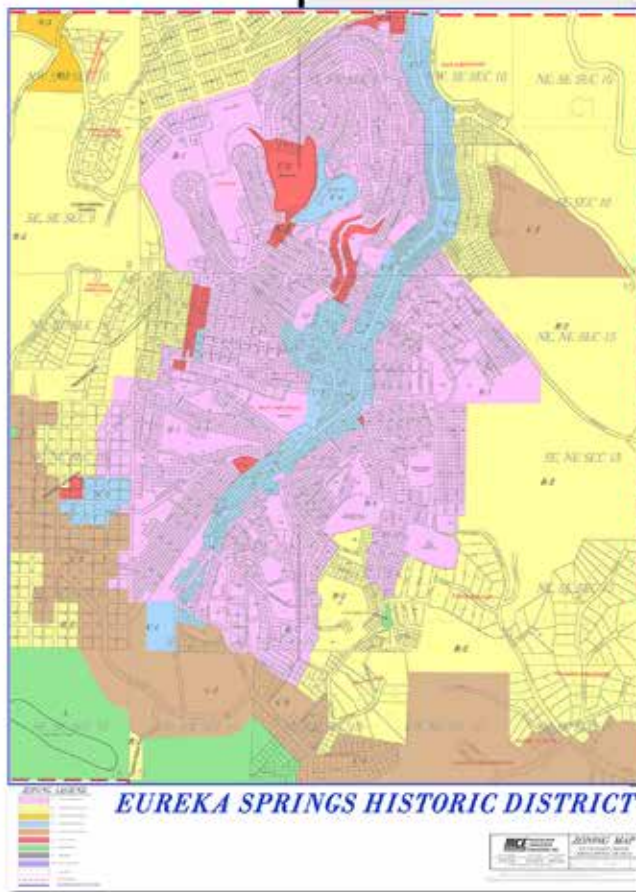
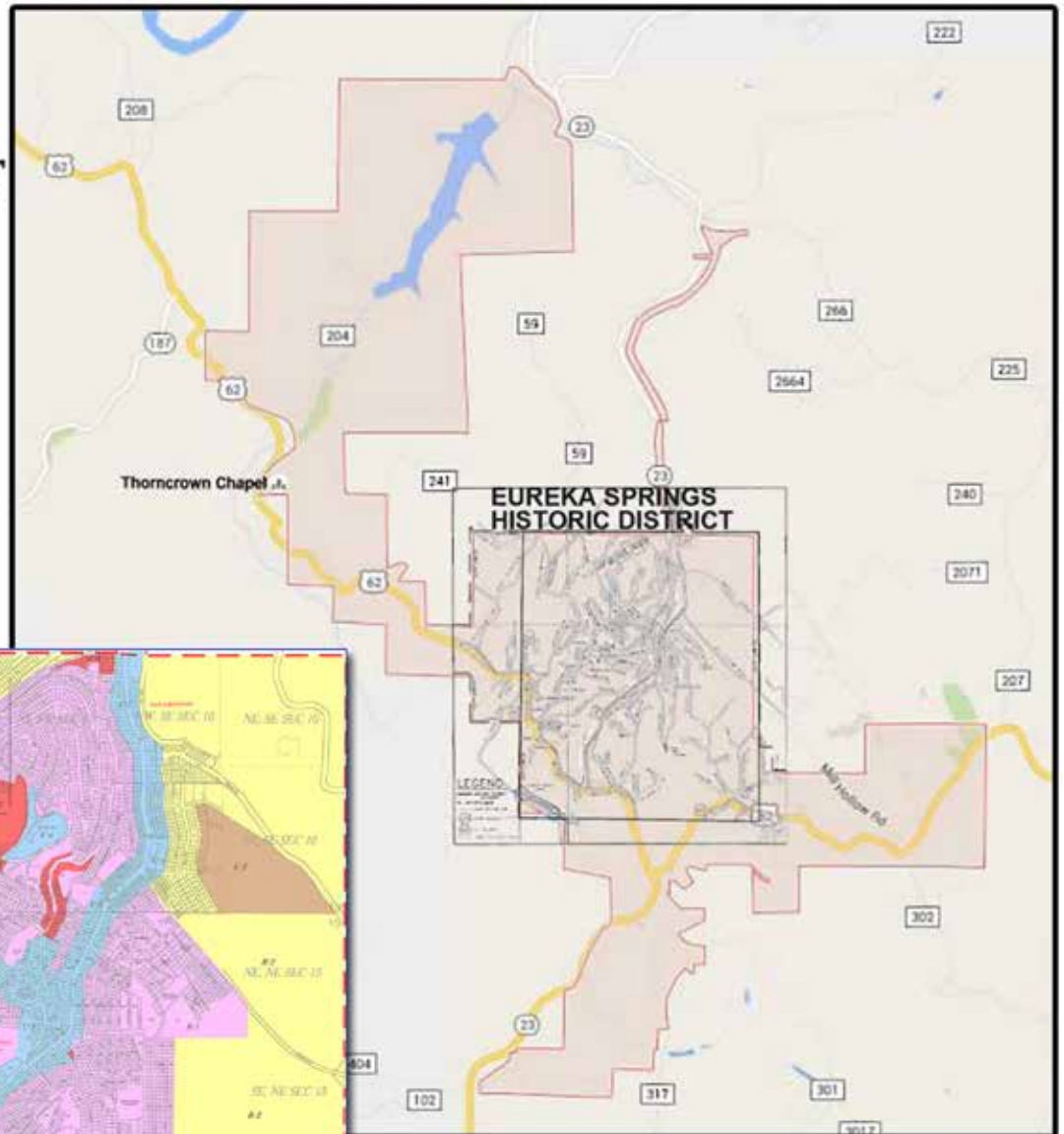
	City of Eureka Springs	Carroll County	Benton County	Washington County
Population (2017)	2088	27,994	266,300	231,996
Elevation	1,265	787	617	755
Land Area	6.8 sq. miles	639 sq. miles	884 sq. miles	952 sq. miles
Average Age	37	42	36	35
% Educated	80%	70%	63%	71%
College Degree	56%	43%	55%	48%
White Collar	62%	41%	46%	49%
Blue Collar	38%	59%	54%	51%
Avg. HH Income	\$35,283	\$38,145	\$56,325	\$45,442

	ARKANSAS		MEDIAN HOME PRICES	LIST PRICE P/SQ/FT
Population (2017)	3,004,000	Eureka Springs	\$224,900	\$117
Average Age	40	Fayetteville	\$295,280	\$129
% Educated	56%	Bentonville	\$316,710	\$132
College Degree	45%	Rogers	\$299,900	\$124
White Collar	41%	Springdale	\$229,000	\$115
Blue Collar	59%	Berryville	\$113,800	\$ 97
Avg. HH Income	\$44,334	Holiday Island	\$165,400	\$117

Sources: Arkansas Economic Development Commission; U.S. Census; State of Arkansas; Trulio/Zillow



EUREKA SPRINGS CITY LIMITS & HISTORIC DISTRICT



ACCESS



Airports –

Carroll County, AR (11 miles)
Northwest Arkansas Regional (XNA) (53 miles)
Fayetteville Executive (43 miles)
Springdale Municipal (38 miles)
Rogers Municipal (42 miles)
Branson, MO (53 miles)
Springfield/Branson, MO (103 miles)
Tulsa, OK (137 miles)

Motor Freight –

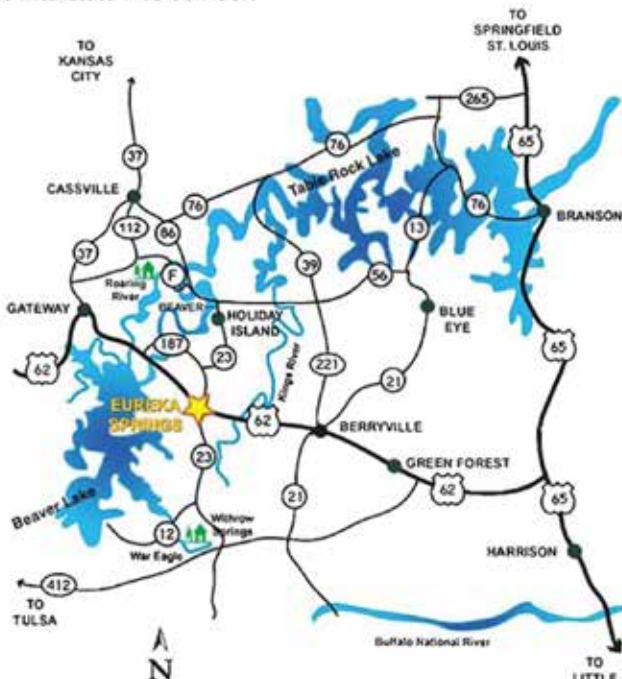
There are approximately 30 motor freight carriers in Northwest Arkansas including J.B. Hunt, ABF, SAIA, Willis-Shaw Express, Yellow, FedEx and UPS with terminal facilities in cities in the Interstate I-49 corridor.

COMMUTE TIME FROM EUREKA SPRINGS



Distance to Major Cities –

Atlanta, GA – 645 miles
Birmingham, AL – 519 miles
Charlotte, NC – 895 miles
Chicago, IL – 617 miles
Dallas/Ft. Worth, TX – 373 miles
Detroit, MI – 875 miles
Houston, TX – 600 miles
Indianapolis, IN – 565 miles
Kansas City, MO – 207 miles
Los Angeles, CA – 1,680 miles
Memphis, TN – 274 miles
New Orleans, LA – 558 miles
Oklahoma City, OK – 328 miles
Pittsburgh, PA – 920 miles
San Francisco, CA – 1,964 miles
Tulsa, OK – 149 miles
Washington, DC - 964 miles



CONTACTS



IMPORTANT CITY CONTACTS

CITY OFFICES
44 South Main
Eureka Springs, AR 72632
cityofeurekasprings.us

CITY HALL
Phone: 479-253-9703
Fax: 479-253-6967

MAYOR
Robert "Butch" Berry
mayor@eurekaspringsar.gov

Assistant to the Mayor
Kim Stryker
kim.stryker@eurekaspringsar.gov

City Clerk Treasurer
Ann Armstrong
cityclerk@cityofeurekasprings.org

POLICE DEPARTMENT: 479-253-8666

Chief of Police Brian Young

147 Passion Play Rd., Eureka Springs, AR 72632

FIRE, AMBULANCE & EMS DEPARTMENT:
479-253-9616

Fire Chief Nick Samac

144 E. Van Buren, Eureka Springs, AR 72632

BUILDING INSPECTOR

Bobby Ray

bray@cityofeurekasprings.org

PUBLIC WORKS: 479-253-9600

Public Works Director Dwayne Allen

dallen@cityofeurekasprings.org

3174 E. Van Buren, Eureka Springs, AR 72632

espublicworks@cityofeurekasprings.org

CARROLL COUNTY SOLID WASTE &
RECYCLING CENTER: 479-253-2727

3190 E Van Buren, Eureka Springs, AR 72632

EUREKA SPRINGS DEPARTMENT OF
TRANSPORTATION: 479-253-9572

Transit and Trolley

Director Ken Smith

smitty@cityofeurekasprings.org

137 W. Van Buren, Eureka Springs, AR 72632



CONTACTS



EUREKA SPRINGS TRANSIT PARK & RIDE:

479-253-9572

Hwy 62W & 23N – Planer Hill, Eureka Springs, AR 72632

Eurekatrolley.org

EUREKA SPRINGS VISITOR WELCOME CENTER & TRANSIT

135 W. Van Buren, Eureka Springs, AR 72632

CITY ADVERTISING & PROMOTION

COMMISSION: 479-253-7333

Director Mike Maloney

121 E. Van Buren, Suite 3B, Eureka Springs, AR 72632

director@eurekasprings.org

EurekaSprings.org

EUREKA SPRINGS PARKS & RECREATION

DEPARTMENT: 479-253-2866

Director Justin Huss: 479-253-7921

director@eurekaparks.com

523 Spring St., Eureka Springs, AR 72632

Eurekaparks.com

Eurekaspringstrails.com

EUREKA SPRINGS HOSPITAL: 479-253-7400

24 Norris St, Eureka Springs, AR 72632

POST OFFICE

Eureka Springs Post Office: 479-253-9850

101 Spring St., Eureka Springs, AR 72632

MUSEUM

Eureka Springs Historical Museum:

479-253-9417

95 South Main, Eureka Springs, AR 72632

Eurekaspringshistoricalmuseum.org

LIBRARY

Eureka Springs Carnegie Public Library:

479-253-8754

194 Spring St., Eureka Springs, AR 72632

Carrollmadisonlibraries.org

PUBLIC SCHOOL

Eureka Springs School District:

479-253-5999

147 Green Hollow Rd., Eureka Springs, AR 72632

Superintendent Bryan Pruitt

bryan.pruitt@es.k12.ar.us

Elementary School: 479-253-8704

Middle School: 479-253-7716

High School: 479-253-8675

PRIVATE SCHOOLS

Clear Spring School: 479-253-7888

347 Dairy Hollow Rd., Eureka Springs, AR 72632

Academy of Excellence: 479-253-5400

157 Huntsville Rd., Eureka Springs, AR 72632

CONTACTS



COUNTY OFFICES

Western District Courthouse County Offices:

479-253-8574

44 S. Main St. Eureka Springs, AR 72632

Marriage Licenses: 479-253-8646

Eastern District Courthouse County Clerk:

870-423-3189

210 W. Church St., Berryville AR 72616

Carroll County Treasurer: 870-423-3189

Carroll County Sheriff: 870-423-2001

Carroll County Judge: 870-423-2987

Carroll County Tax Assessor: 870-423-2388

Carroll County Health Unit: 870-423-2923

MEDICAL

Eureka Springs Hospital: 479-253-7400

24 Norris St, Eureka Springs, AR 72632

Washington Regional Family Clinic: 479-253-9746

146 Passion Play Rd, Eureka Springs, AR 72632

Mercy Convenient Care - Eureka Springs:

479-253-7158

121 E Van Buren, Eureka Springs, AR 72632

Eureka Walk-In Clinic: 870-350-3220

4052 E. Van Buren, #A, Eureka Springs, AR 72632

ECHO Clinic: 479-253-5547

4004 E. Van Buren, Eureka Springs, AR 72632

Mercy Hospital: 870-423-3355, 214 Carter St., Berryville



CARROLL COUNTY/ARKANSAS RESOURCES

Berryville, Arkansas

Motor Vehicle Licensing & Registration

Arkansas Revenue Office: 870-423-2046

105 N. Spring St., Berryville, AR

Bring: Proof of liability insurance, title, copy of lien contract,
Vehicle Identification Number.

Tax Assessor

Tax Assessor Office: 870-423-2388

210 W. Church St., Berryville AR

Must have a personal property assessment prior to registration.

Drivers License

Office of Motor Vehicles: 870-423-4206

105 N. Spring St. Berryville, AR

No testing required if you have a valid out-of-state license that is not
expired by more than 30 day. Otherwise, call for testing days and sites.

Area Agency on Aging/Senior Center: 870-423-6114

201 Madison, Berryville, AR

Carroll County Health Unit: 870-423-2923

402 Hailey Rd., Berryville, AR

Department of Human Services: 870-423-3351

614 Hailey Rd., Berryville AR

Veteran Services: 870-423-4000

Alex Brown, CVSO

210 W. Church Ave., Berryville AR 72616



EUREKA SPRINGS SALES TAX RATES

Sales Tax Rates

The sales tax on purchases made within the City limits is collected by the State of Arkansas who, in turn, passes back earmarked amounts to local governments such as counties and cities. The total sales tax rate of **9.375%** is controlled by the following three entities and their individual sales tax rates

State of Arkansas:	6.5%
Carroll County	.5%
City of Eureka Springs	2.375%

Additional Tourism Taxes: The City Advertising & Promotion Commission collects a 3% Hotel/Motel/Restaurant (HMR) tax on establishments engaged in the business of renting, leasing or otherwise furnishing overnight lodging accommodations, or selling prepared food for consumption, on or off premises. These tax-payer dollars collected are restricted and can only be used for city advertising and promotion outside a 50-mile radius.

Additional City Tax on Alcohol:

The City Clerk Treasurer collects a 10% tax monthly on establishments serving alcohol except beer and wine.

If you have specific questions about the State of Arkansas Tax and additional state taxes, you may call the State Sales Tax Division in Little Rock at 501-682-7104.

LICENSES/ PERMITS



DOING BUSINESS WITH EUREKA SPRINGS IS EASY!

Business License:

Contact: Ann Armstrong, City Clerk Treasurer – 479-253-9703

Range from \$40 up (Price may vary according to specifics of the business).

Business licenses are required for ALL those conducting business in Eureka Springs even if based elsewhere. If trade licenses are required by the State of Arkansas then proof of licensure must also be presented as well as proof of a Surety Bond. Many occupations must also have state licenses before working in Arkansas.

Certificate of Occupancy:

Must pass a safety inspection by City Building Official and Fire Marshal: Fee \$50

Restaurants:

Contact: County Health Sanitarian – 870-423-3514

Restaurants must pass semi-annual grease trap inspections by Building Official (\$50 annually). Arkansas state laws also apply.

Special Permits are required for some businesses.

Before being issued, special permits require a public hearing and approval by the Eureka Springs City Council. Those businesses include: Animal-Drawn Vehicles Operated for Hire; Sightseeing Tour Franchises; Taxicabs and others. There is an annual lottery for Food Trucks in November; property owners do not have to go before City Council.

Arkansas State License, Tax and Workforce Services Information:

Access all state-related information, guides and forms at: Arkansas.gov

PLANNING & ZONING

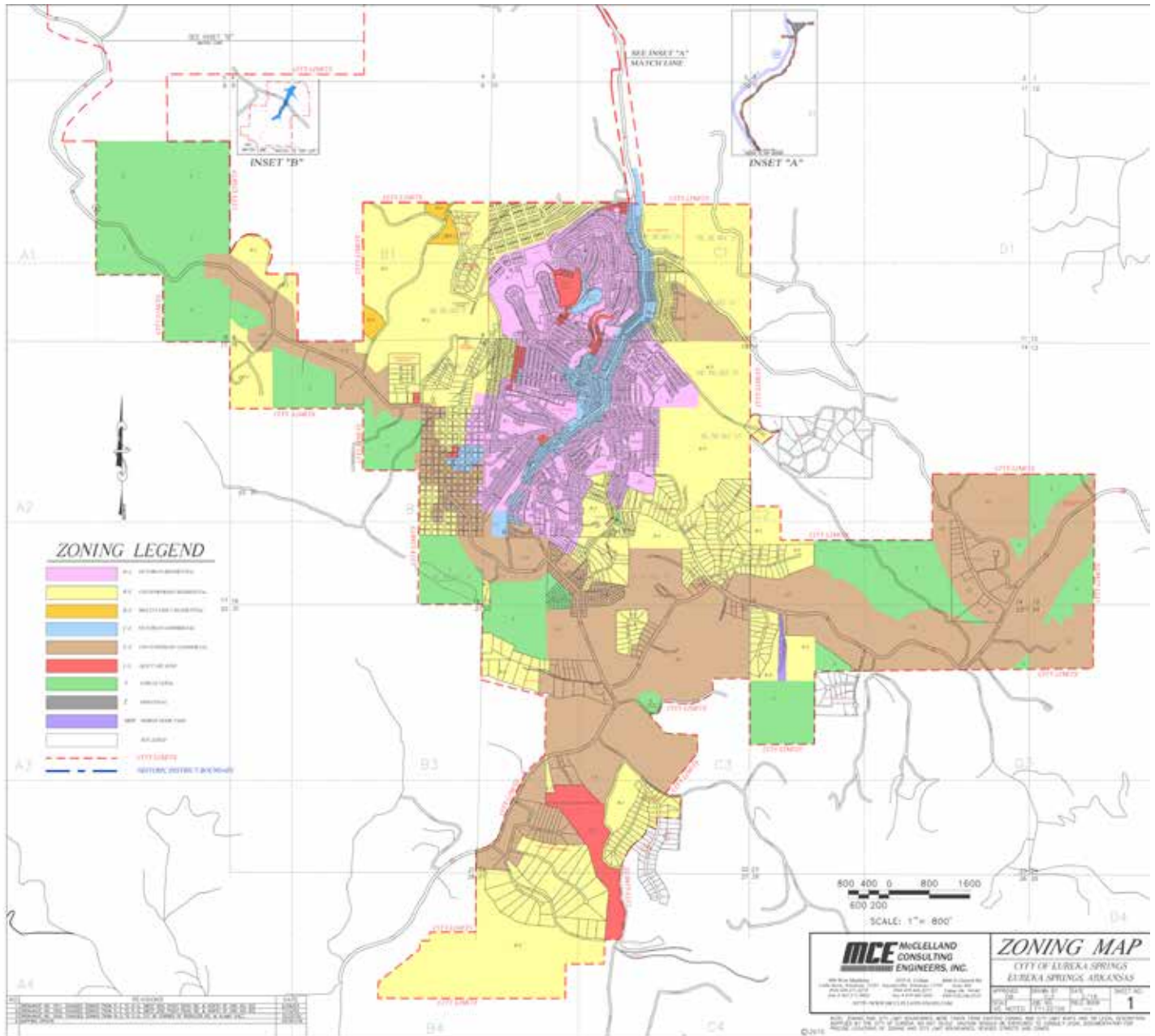


RENEWED
ECONOMIC DEVELOPMENT

LOVE WHERE
YOU LIVE
AND WORK

A NATURAL
FOR BUSINESS

VIBRANT &
AUTHENTIC



The entire downtown district of Eureka Springs is on the National Register of Historic Places – with Significance.



PLANNING AND ZONING

The Planning Commission and Board of Zoning Adjustment is responsible for reviewing applications for:

Conditional Use Permit	\$100
Zoning Variance	\$100
Rezoning	\$100
Tree Removal Permit	(over 9 trees) - \$20
Sign Variance	\$50

This commission meets the second and fourth Thursdays of each month at 6:00 pm in the Auditorium.

Some applications require a public hearing and notification of adjacent property owners by certified mail (with returned receipts and Affidavit of Publication).

Planning and Zoning specific information is available on the city website: CityOfEurekaSprings.us

Chapter 14.

EUREKA SPRINGS ZONING DISTRICTS:

- R-1 Victorian Residential
- R-2 Contemporary Residential
- R-3 Multiple-Family Residential
- C-1 Victorian Commercial
- C-2 Contemporary Commercial
- C-3 Quiet Use Commercial
- I Industrial
- A Agriculture
- MHP Mobile Home Park



Contact:

Bobby Ray, Building Inspector
bray@cityofeurekasprings.org
44 South Main
Eureka Springs, AR 72632
479-253-9703

This office issues the following permits:

Sign
Construction (Building)
Plumbing
Gas Plumbing
Electrical
Mechanical (HVAC/R)
Tree Cuts
Certificate of Occupancy

Permit applications are available at the Building Inspector's office (City Hall) during regular business hours. Note: Building Permits will be issued or denied with 10 business days after the application has been filed. Please allow for this in your planning process.

The inspector is normally available to issue permits between 8 am and 10 am weekdays.

This office is also responsible for compliance with current Municipal Code (signage, grease traps trees, etc.), and other applicable building and construction codes. If you have a question about the Municipal Code, you may contact the Building Inspector.

Note: If your construction vehicle will be parking in metered parking spaces on Main or Spring Streets, you may obtain parking passes at the front desk of City Hall. These passes are \$9.00 per day.

If your project involves any exterior alteration, check to see if your location is within the Historic District. If so, you must obtain a Certificate of Appropriateness before a building permit will be issued.

Questions about grease trap inspections may be directed to Inspector Bobby Ray:
479-253-9703



WATER

New service and changes should be made at City Hall 8 am to 4:30 pm. Cash, check or credit card is required to set up a new account. Monthly payments may be made with credit or debit cards. Monthly payment may be made at the Reception Desk and the City Hall drop-box on the south side of the Courthouse/City Hall; or drop-box at Public Works Departments, 3174 E. Van Buren. Arrangements may be made for monthly direct withdrawal from your checking account.

TRASH

Carroll County Solid Waste – 479-253-2727, 3190 E. Van Buren.

Trash disposal: Contact CCSW to discuss commercial collection options. Commercial accounts are not required to purchase yellow bags.

RECYCLE

Carroll County Solid Waste – 479-253-2727, 3190 E. Van Buren

Cardboard: Weekly corrugated cardboard pick-up is provided at no additional charge.

Glass: Weekly glass collection for \$1/month Drop off at Recycle Center at no cost

Recycle Center: Open 7 am to 4 pm Monday-Friday. Located off Highway 62 West next to Public Works.

CCSW will accept drop-off of all items listed for curbside collection, plus motor oil, cooking oil, magazines, office paper, junk mail, corrugated cardboard and large steel and aluminum items. Fees: \$15 for large items with freon; \$5 for electronic items.

STREETS AND RIGHT OF WAYS

Public Works Department: 479-253-9600, 3174 E. Van Buren. Hours: 7 am to 4 pm Monday-Friday.

City road and sig maintenance, snow removal, maintenance of sewer plant.

ELECTRICITY

Eureka Springs is served by two electricity companies depending upon your location:

AEP – Southwestern Electric Power (SWEPCO): 1-888-216-3523. Serves most of Eureka Springs.

SWEPCO offers energy conserving incentives. For more information: 1-888-266-3130 or email: info@SWEPCOsaving.com.

Carroll Electric Cooperative: 1-800-432-9720. Open 8 am to 4:30 pm Monday-Friday, serves some areas on the edges of the city limits.



Tourism-based Business should first contact:

City Advertising and Promotion Commission

Mike Maloney, Executive Director

Rick Bright, Finance Manager

121 East Van Buren, Suite B, lower level

479-253-7333

Open: 8 am to 5 pm, Monday-Friday

The City Advertising & Promotion Commission (CAPC) directs all advertising and promotional activities for the City of Eureka Springs through a 3% tax collected from all lodging and restaurant/food service businesses with city limits.

The CAPC manages the official city website: EurekaSprings.org.

It also manages the official city Facebook page: facebook.com/VisitEurekaSprings and the Made In Eureka Springs website: MadeInEurekaSprings.org

The CAPC manages the historic Auditorium theater located at 36 S. Main Street; 479-253-7788. The Auditorium hosts local and national performing arts events, local events, meetings, conferences meetings and exhibitions. Contact the CAPC for booking public events at the 960-seat venue. Fees apply. For more information: TheAud.org

This commission meets every second Wednesday of the month at 6:00 pm in the Auditorium. The commission also holds monthly workshop meetings. Check website for specific day/time.



The following forms and permits can be accessed electronically from the city website:
CityofEurekaSprings.us – under the “Residents” tab (Forms & Permits).
Return completed forms and permits to City Hall.

SPECIAL EVENTS

Special Event Permit
Special Event Permit – single location
Basin Park Band Shell Reservation
Parade Permit
Banner Permit
Parking Lot use Permit
Outdoor Amplified Sound Permit

PLANNING AND BOARD OF ZONING ADJUSTMENTS

Conditional Use Permit
B.O.Z.A. Sign Variance application
B.O.Z.A. Variance application
B.O.Z.A. Notice of Appeal application
Move Building and Structure application
Rezoning Property application
New Commercial Construction Code Compliance Review application
Tree Removal Permit Appeal application

HISTORIC DISTRICT

Historic District Application



CITY COMMISSIONS

APPLICATIONS TO VOLUNTEER FOR CITY COMMISSIONS

FOIA

REQUEST FOR INFORMATION UNDER FREEDOM OF INFORMATION ACT

WATER SERVICES

Agreement for Preauthorized payments

New Water services Service Application

Barricade and Cones Rental Form

Water-Sewer Account Change

Swimming Pool Sewer Waiver Payments

BUSINESS

Occupational License (business permit) application

Declaration of Registered Agent

Application for CAPC tax permit

Certificate of Occupancy Request Check List

EMPLOYMENT

Employment Application

DOMESTIC PARTNERSHIP

Domestic Partnership Registry Application

Domestic Partnership Termination Application

CHECK LIST



NEW BUSINESS CHECKLIST FOR CITY, COUNTY & STATE

City:

- ☐ Business/Occupation License
- ☐ Certificate of Occupancy
- ☐ Conditional Use Permits
- ☐ Alcoholic Beverage License
- ☐ Sign Permit with COA
- ☐ Certificate of Appropriateness (COA)
- ☐ CAPC Tax Collection

County:

- ☐ County Sanitarian Inspection
- ☐ Sales and Use Tax Collection

State:

- ☐ Arkansas Trades License
- ☐ Arkansas ABC permit

Note: Not all apply to all businesses

SIGNAGE:

The number and size of allowable signs are determined by City Ordinance according to the zone in which the business is located. See Municipal Code, Chapter 86, Signs

Zoning Maps are located in this guide and at City Hall.

Sign Permits: \$20+

Note: Some types of signage are not allowed. All signs must first have an HDC Certificate of Appropriateness if within the Historic District (see map). Contact: Building Inspector at City Hall.

CERTIFICATE OF APPROPRIATENESS (COA):

The Eureka Springs Historic District Commission (ES HDC) does exterior design review for ALL properties in the Historic District, regardless of age of property or zoning. The Historic District includes most of the land within the city limits ALL exterior features of a property are subject to the design review procedures of the ES HDC including signage.

The ES HDC bases their decision on the U.S. Secretary of the Interior, Standards for the Treatment of Historic Properties and the ES HDC Guidelines.

The ES HDC meets on the first and third Wednesdays at 6:00 pm at the Auditorium. Applications for a Certificate of Appropriateness are available at City Hall and must be filed 15 days before the meeting at which it will be heard. Minor maintenance and some repairs with the same materials may be approved administratively.

No fee. Contact: City Historic Preservation Officer; City Hall



BUSINESS, CITY, STATE AND OTHER RESOURCES

City of Eureka Springs: CityOfEurekaSprings.us

Eureka Springs Economic Development: EurekaSpringsInc.org

BUSINESS

Mayor's Task Force on Economic Development

Mayor Butch Berry/
Chair: Sandy Royce Martin
479-244-6636
EurekaSpringsInc.org
EurekaSpringsLiveWorkPlay.us

The Rotary Club of Eureka Springs

President: Allen Huffman
479-981-1887
EurekaSpringsRotary@gmail.com
EurekaRotary.org

Arts Council of Eureka Springs

Chair: Sandy Royce Martin
EurekaSpringsArtWall.com

City Events & Festival Calendar

EurekaSprings.org

REAL ESTATE

Carroll County Association of Realtors
CarrollCountyRealtors.net

ActDataScout – Carroll County
actdatascout.com

BANKS

Equity Bank of Eureka Springs
President: Elizabeth Kelley
107 W. Van Buren
479-253-0500
EquityBank.com

Cornerstone Bank
President: Jason Tenant
CEO: Charles Cross
152 E Van Buren
479-239-5525
Cstonebank.net

Arvest Bank
President: Richard Kimberlin
151 E Van Buren
479-253-8275
Arvest.com

First National Bank
149 Huntsville Road
479-253-9538
1stnationalbank.com

RESOURCES



STATE & REGION

Arkansas Secretary of State:

Doing Business in Arkansas

[sos.arkansas.gov/uploads /DoingBusinessinAR.pdf](https://sos.arkansas.gov/uploads/DoingBusinessinAR.pdf)

Arkansas SOS Business Entity Search,

Registration, Forms & Fees

sos.arkansas.gov/business-commercial-services-bcs

Forms / Fees - Arkansas Secretary of State - Arkansas.gov

sos.arkansas.gov/business-commercial-services-bcs/forms-fees

Arkansas Economic Development Commission

Arkansasedc.com

Small Business Technology & Development Center

StdC.uark.edu

Arkansas Parks & Tourism

Arkansas.com

Northwest Arkansas Tourism Association

NorthwestArkansas.org

Northwest Arkansas Film & Entertainment Commission

FilmNWA.org

INCENTIVES



Incentives

Arkansas has an array of incentives designed to assist a wide selection of qualifying businesses in various stages of growth. More information on state incentives can be found on the Arkansas Economic Development Commission website: arkansasaedc.com/incentives.

The current incentive guide is also available for download in PDF format on the Mayor's Task Force on Economic Development website: EurekaSpringsInc.org

Arkansas Tax Credit: 25% tax credit is available for preservation related work on contributing properties in the Historic District (residential and commercial). See City Historic Preservation Office in City Hall for more information.

Eureka Springs Film, Music and Entertainment Incentives

Eureka Springs is the only municipality in Arkansas to offer an incentive for film, music, entertainment and digital production independent from - or combined with - the state incentives. Incentives include tax rebate and discounts from preferred vendors. Eureka Springs has an extraordinary and unique variety of production locations and venues.

For creative production services, Eureka Springs has over 250 professionals experienced in all facets of visual, performance, music, theatrical, broadcast, film, marketing, digital creation/production and technology. Visit: EurekaSpringsArtWall.com

“Having worked in network television for 15 years, I've shot in LA, San Francisco, Seattle, Chicago, Atlanta, New York, Vancouver, and a ton of other cities. You have the most production friendly city I've ever worked with.

The (production) came off flawlessly, and we have spectacular footage to show for it. Thank you! ”

*Barry Cobbs
President, LiveLight!*

Eureka Springs is the founding member of The Northwest Arkansas Film & Entertainment Commission.



For more information on FilmNWA: FilmNWA.org
For production site locations and services, please contact: artscouncileureka@gmail.com

Available Commercial, Retail & Residential Sites

Please contact The Carroll County Realtors Association for available sites or visit: ActDataScout/Carroll County - www.carrollcountyrealtors.net - or ArkansasSiteSelection.com



Eureka Springs: A FUTURE CITY

Eureka Springs is poised to be the City of the Future for the growing independent contractor and freelance workforce. Eureka Springs can be a talent magnet with our quality of life, inclusive community, open spaces, authentic culture and low cost of living.

Independent workers want to locate where they want to live rather than where they need to work.

Older workers (Gen X and Baby Boomers) are especially interesting in freelancing, whether it is a transition to retirement, reinventing their first career, or wanting to earn extra income through freelancing.



QUALITY EDUCATION

IN ADDITION TO EXCELLENT EDUCATION THROUGH HIGH SCHOOL, EUREKA SPRINGS OFFERS HIGHER EDUCATION AND WORKFORCE DEVELOPMENT OPPORTUNITIES WITHOUT LEAVING THE COUNTY.

COLLEGE: NORTH ARKANSAS COLLEGE - CARROLL COUNTY CAMPUS

WORKFORCE DEVELOPMENT: CARROLL COUNTY CAREER CENTER (C4)

Eureka Springs School District

District Report Card 2016-2017
147 Greenwood Hollow Rd | Eureka Springs, AR 72632
479-253-1011

Superintendent

Bryan Pruitt

DISTRICT CHARACTERISTICS

Enrollment	617
Avg. Class Size	11
Avg. years teaching Experience	8
Per pupil spending	
• District avg.	\$12,414
• State avg.	\$9,807
School Choice - Legal Transfers	16

Overall Rating: 90.48

Overall Graduation Rate: 93.75%

STUDENT DEMOGRAPHICS

Race/Ethnicity Statistics



2017

Other Demographics

Limited English proficiency	7 %
Low-income	56 %
Students eligible to receive special education	12 %

Berryville School District

District Report Card 2016-2017
902 W Trimble Ave | Berryville, AR 72616
870-435-7065

Superintendent

Owen Powell

DISTRICT CHARACTERISTICS

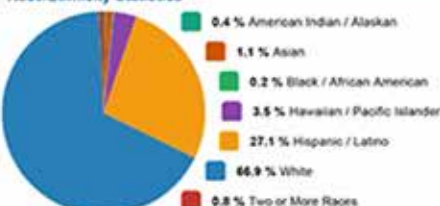
Enrollment	1,948
Avg. Class Size	15
Avg. years teaching Experience	4
Per pupil spending	
• District avg.	\$9,377
• State avg.	\$9,807
School Choice - Legal Transfers	22

Overall Rating: 76.19

Overall Graduation Rate: 70.71%

STUDENT DEMOGRAPHICS

Race/Ethnicity Statistics



2017

Other Demographics

Limited English proficiency	23 %
Low-income	71 %
Students eligible to receive special education	14 %

Green Forest School District

District Report Card 2016-2017
PO Box 1950 | Green Forest, AR 72638
870-435-5201

Superintendent

Philp Summers

DISTRICT CHARACTERISTICS

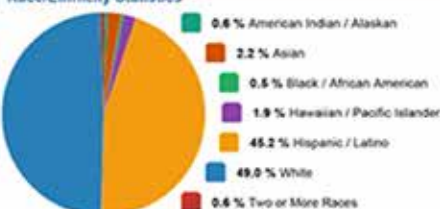
Enrollment	1,292
Avg. Class Size	13
Avg. years teaching Experience	11
Per pupil spending	
• District avg.	\$9,827
• State avg.	\$9,807
School Choice - Legal Transfers	27

Overall Rating: 87.64

Overall Graduation Rate: 86.84%

STUDENT DEMOGRAPHICS

Race/Ethnicity Statistics



2017

Other Demographics

Limited English proficiency	36 %
Low-income	82 %
Students eligible to receive special education	11 %

Serving Eureka Springs, Berryville, Green Forest and all of Northwest Arkansas



www.CarrollCountyAirport-4M1.com

CCA is located three miles west of Berryville on County Road 308, just south of US 62.

Carroll County Airport



Flight instructor, "Hollywood" Harvey Cleveland
will have you up and flying in no time!

For information and to schedule lessons:
Harvey Cleveland | 816.985.0825
harveycleveland@gmail.com



- Fuel price: \$4.00 gallon
- Tri-State AirMotive
870-423-4911
- Ozark Aviation Pilot Supplies
870-423-7854
- Courtesy cars



COMING 2019



5 passenger 62" wide cabin
2200 lbs empty weight



- Stop in and check us out. View our award-winning display of 124 immaculately hand-painted models of World War II airplanes from around the world.
- Have your next special event or business meeting at the airport.
- Contact Michael Pfeifer at 870-423-8393 (24/7)
Email: ccac4m1@yahoo.com

For more information call 870-423-8393

LOVE WHERE
YOU LIVE
AND WORK

EUREKA
SPRINGS
SHEDDING THE RURAL
IDEAL
A NATURAL
FOR BUSINESS

VIBRANT &
AUTHENTIC

EUREKA SPRINGS: THE CENTER OF ADVENTURE 12 MONTHS A YEAR

LAKE LEATHERWOOD DOWNHILL GRAVITY TRAILS...

TRAILS BUILT TO
Shred!

The bike trails in and around Eureka Springs, Arkansas have been a biking enthusiast's dream for over 130 years. Today, some of the most challenging mountain bike trails in the region can be found just minutes from downtown, at Lake Leatherwood City Park. These new downhill gravity trails have been cut by the experts. Some say they are the best downhill runs this side of the Rockies. So, the next time you and your friends are looking for some serious "hang time," veer off the beaten path and shred the new mountain bike trails in Eureka Springs...
your extraordinary outdoor escape!

To plan your epic ride visit EurekaSprings.org



WALTON FAMILY
FOUNDATION



Mountain Bikers Responsibility Code
Mountain biking involves risk of serious injury or death. Your knowledge, decisions and actions contribute to your safety and that of others.

Know and follow the code. It is your responsibility. Emergencies, call 911.

ALWAYS:

1. **STAY IN CONTROL:** You're responsible for avoiding objects and people.
2. **KNOW YOUR LIMITS:** Ride within your ability. Start small and work your way up.
3. **PROTECT YOURSELF:** Use an appropriate bike, helmet and protective equipment.

4. **INSPECT AND MAINTAIN YOUR EQUIPMENT:** Know your components and their operation prior to riding.

5. **INSPECT THE TRAILS AND FEATURES:** Conditions change constantly, plan and adjust your riding accordingly.

6. **OBEY SIGNS AND WARNINGS:** Stay on marked trails only. Keep off closed trails and features. Ride in the direction indicated.

7. **BE VISIBLE:** Do not stop where you obstruct a trail, feature, landing or are not visible.

8. **LOOK AND YIELD TO OTHERS:** Look both ways and yield when entering or crossing a road or trail. When overtaking, use caution and yield to those ahead.

9. **COOPERATE:** If involved in or witness to an incident, identify yourself to staff.

SOUTH HUB

DOWN HILL 1 **VERY DIFFICULT**

Mixed with large rock jumps, techy staircases, rock ledge drops and massive rock built features. **Mandatory Jumps • Mandatory Drops • Steep Staircases**

DOWN HILL 2 **VERY DIFFICULT**
(The Original)

Array of black and blue features, all with ride around options. High speed 8 ft. cliff drop is the highlight.

DOWN HILL 3 **VERY DIFFICULT**

Rolling big or catching air, with rock ledges and wooden masterpieces. **Mandatory Jumps • Mandatory Drops • Steep Staircases**

NORTH HUB

DOWN HILL 4 **MORE DIFFICULT**

Fast with big rock drops, chunky rock gardens and big gaps. **Mandatory Jumps • Mandatory Drops • Steep Staircases • Technical Rock Gardens**

DOWN HILL 5 **MORE DIFFICULT**

Big rolling jumps, big ledge drops, staircases and a lot of speed. **Mandatory Jumps • Mandatory Drops • Steep Staircases • Technical Rock Gardens**

DOWN HILL 6 **EASY**

Start here for a warm up and scenic ride. **Beginner Line**

DOWN HILL 7 **EXTREMELY DIFFICULT**

Huge rock drops, large jumps and technical rock gardens. **Expert Mandatory Drops • Expert Mandatory Gaps • Expert Technical Rock Gardens**

WET

3 Lakes
Beaver Lake
Table Rock Lake
Lake Leatherwood
3 Rivers
White River
Kings River
Buffalo National River

WILD

Zip Lines
Downhill Gravity Trails
Mountain Biking
Ozark & Boston
Mountain Ranges
Caves
Caverns

MILD

2 Golf Courses
50+ miles of trails
In-town Nature
Hiking & Biking
Bird watching
Rare Species & Habitats



EUREKA SPRINGS

NATURE'S COMMUNITY



CONTACTS:
 Mayor Robert "Butch" Berry
 City of Eureka Springs
 479.253.9703
mayor@eurekaspringsar.gov

Sandy Royce Martin
 Mayor's Task Force on Economical Development
 479.244.6636 procommeureka@gmail.com